

APPLETON  
(FOX CITIES) MPO

**2022**  
**STATE OF THE SYSTEM REPORT**

TRANSPORTATION  
SYSTEM



Approved Month Date, 2023







**The Appleton (Fox Cities) Urbanized Area will have a safe, efficient, and effective transportation network which provides options for the mobility needs of all people, goods, and services, while maximizing available resources, such as land, energy, and finances.**

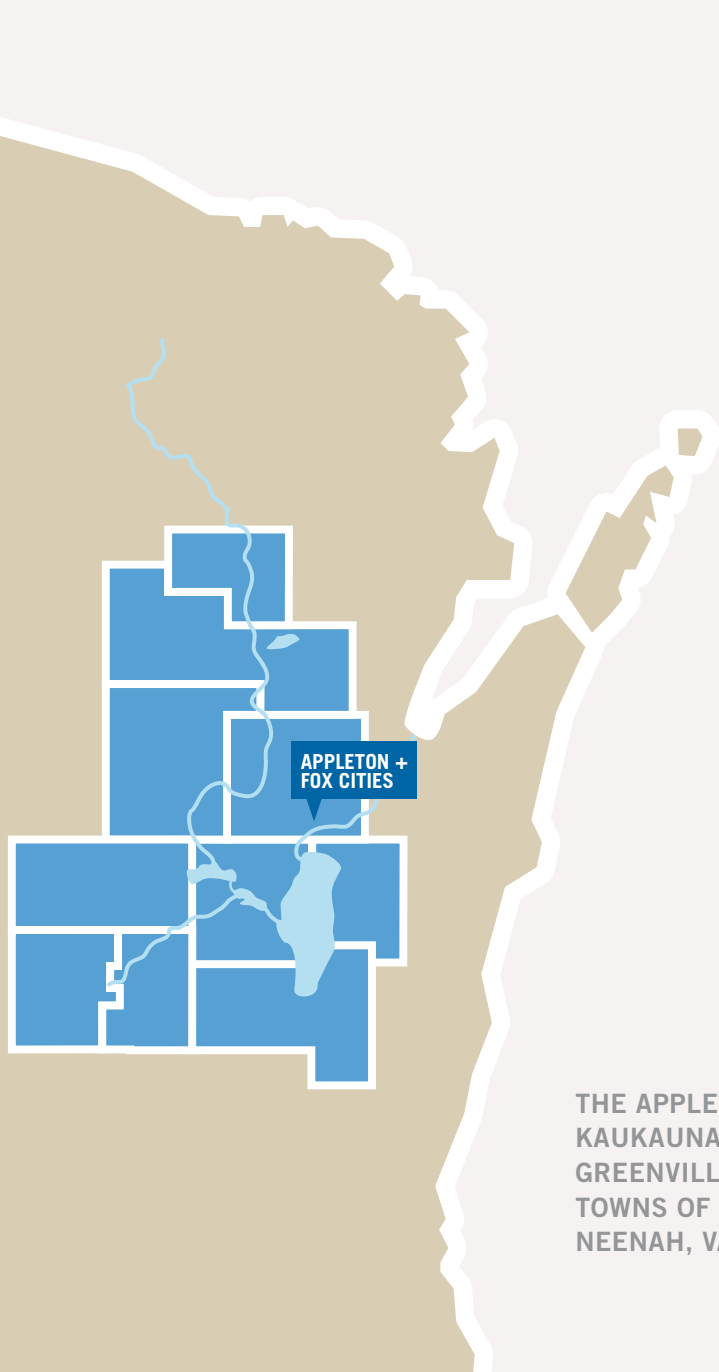
**-Appleton (Fox Cities) MPO Vision**







# TABLE OF CONTENTS



|   |                           |
|---|---------------------------|
| 5 | Table of Contents         |
| 6 | Purpose & Background      |
| 7 | Transportation System Map |

## OVERVIEW OF THE MPO

|    |                                     |
|----|-------------------------------------|
| 9  | Land Use & Population<br>Employment |
| 10 | Housing & Income<br>Commuting       |

## PERFORMANCE MEASURES

|    |                              |
|----|------------------------------|
| 12 | Roadways                     |
| 14 | Transit                      |
| 16 | Bicycle & Pedestrian Network |
| 18 | Safe Routes to School        |
| 20 | Freight & Airports           |

## RESOURCES

|    |                                     |
|----|-------------------------------------|
| 22 | Transportation Programs & Map Links |
|----|-------------------------------------|

THE APPLETON (FOX CITIES) MPO INCLUDES ALL OR PORTIONS OF THE CITIES OF APPLETON, KAUKAUNA, MENASHA, AND NEENAH, THE VILLAGES OF COMBINED LOCKS, FOX CROSSING, GREENVILLE, HARRISON, KIMBERLY, LITTLE CHUTE, SHERWOOD, AND WRIGHTSTOWN, AND THE TOWNS OF BUCHANAN, CLAYTON, CENTER, ELLINGTON, FREEDOM, GRAND CHUTE, KAUKAUNA, NEENAH, VANDENBROEK, VINLAND, AND WOODVILLE.



# PURPOSE & BACKGROUND

The annual State of the System Report is designed to evaluate the status of the Appleton (Fox Cities) Metropolitan Planning Organization (MPO) transportation system and track the progress of performance measures through datasets and maps. The report will provide MPO staff, local government staff, and outside service providers data about transportation systems.

## BIL & IIJA

The Bipartisan Infrastructure Law (BIL) was signed into law on November 15, 2021. Passed as the Infrastructure and Investment in Jobs Act (IIJA), the BIL outlines federal funding programs for infrastructure including public transit, microtransit, motor vehicle and freight safety, highway efficiency, hazardous material transportation, equity, and environmental protection. The BIL reemphasizes the integral relationship land use has with transportation infrastructure, as well as the need to address mobility from a multimodal perspective, as previously emphasized under the FAST Act, MAP-21, TEA-21, and SAFETEA-LU.

A series of performance measures have been established by the U.S. Department of Transportation, the Wisconsin Department of Transportation, and the East Central Wisconsin Regional Planning Commission to monitor conditions of the transportation system on a local and national scale. Six components of the Appleton (Fox Cities) MPO transportation system are monitored throughout this report: roadways, transit, the bicycle and pedestrian network, the Safe Routes to School program, airports, and freight.

## MPO Structure

A Metropolitan Planning Organization (MPO) is the policy board of an organization created and designated to carry out the metropolitan transportation planning process. MPOs are required to represent localities in all urbanized areas with populations over 50,000. An urbanized area with a population over 200,000 people, as defined by the U.S. Census Bureau and designated by the Secretary of the U.S. Department of Transportation, is called a Transportation Management Area (TMA). The Appleton (Fox Cities) MPO is designated as a TMA. In 2021, the Appleton (Fox Cities) MPO was home to approximately 257,432 people.

The Appleton (Fox Cities) MPO is comprised of local and regional transportation professionals and elected officials. The MPO consists of three committees: the Transportation Committee (Policy Board), the Technical Advisory Committee (TAC), and the Commission Board. The committees direct and monitor transportation plans with guidance from MPO staff at the East Central Wisconsin Regional Planning Commission.

## COVID-19

Travel, commuting, and recreational activity patterns have changed in response to the COVID-19 pandemic and resulting socioeconomic changes. The goal of this report is to evaluate the status of the Appleton (Fox Cities) TMA transportation system as of 2022, but please note that data gathered during the COVID-19 pandemic may not reflect current trends.

### NATIONAL TRANSPORTATION PERFORMANCE MANAGEMENT GOALS

Established by the U.S. Department of Transportation and the U.S. Congress

#### SAFETY

To achieve a significant reduction in traffic fatalities and serious injuries on all public roads.

#### INFRASTRUCTURE CONDITION

To maintain the highway infrastructure asset system in a state of good repair.

#### CONGESTION REDUCTION

To achieve a significant reduction in congestion on the National Highway System.

#### SYSTEM RELIABILITY

To improve the efficiency of the surface transportation system.

#### FREIGHT MOVEMENT & ECONOMIC VITALITY

To improve the national freight network, strengthen the ability of rural communities to access national and international trade markets, and support regional economic development.

#### ENVIRONMENTAL SUSTAINABILITY

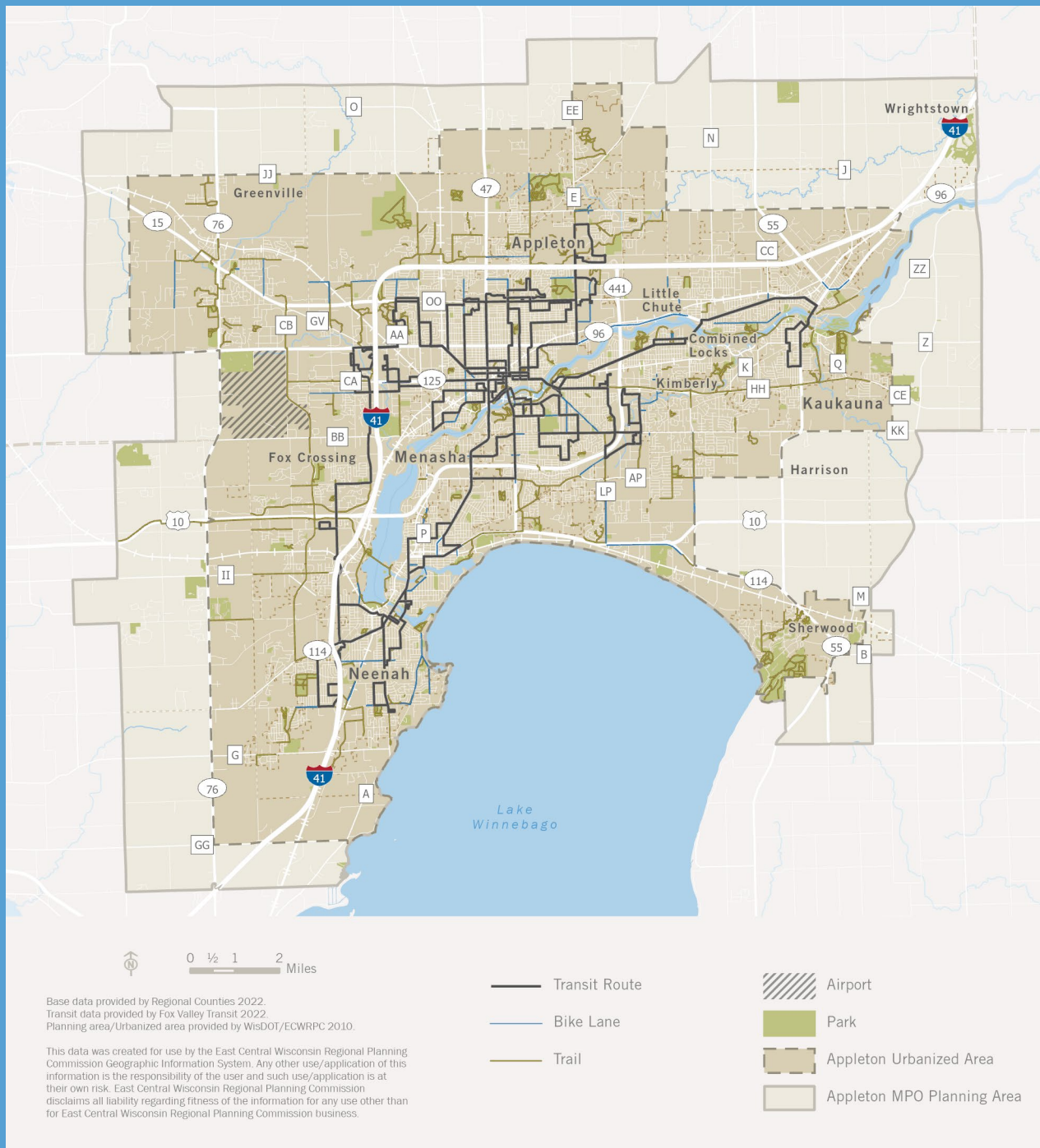
To enhance the performance of the transportation system while protecting and enhancing the natural environment.

#### REDUCED PROJECT DELIVERY DELAYS

To reduce project costs, promote jobs and the economy, and expedite the movement of people and goods by accelerating project completion through eliminating delays in the project development and delivery process, including reducing regulatory burdens and improving agencies' work practices.



# APPLETON (FOX CITIES) MPO TRANSPORTATION SYSTEM







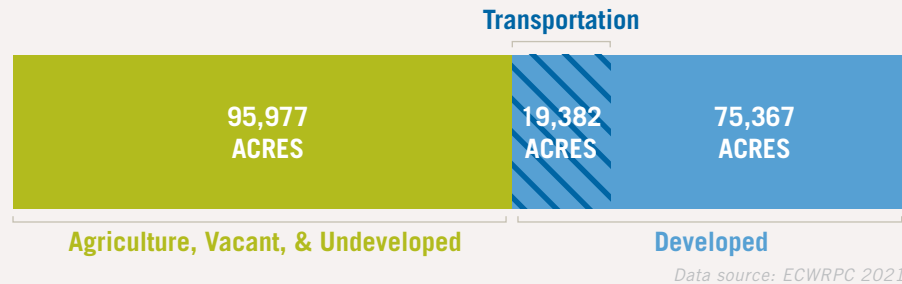
## OVERVIEW OF THE APPLETON (FOX CITIES) MPO



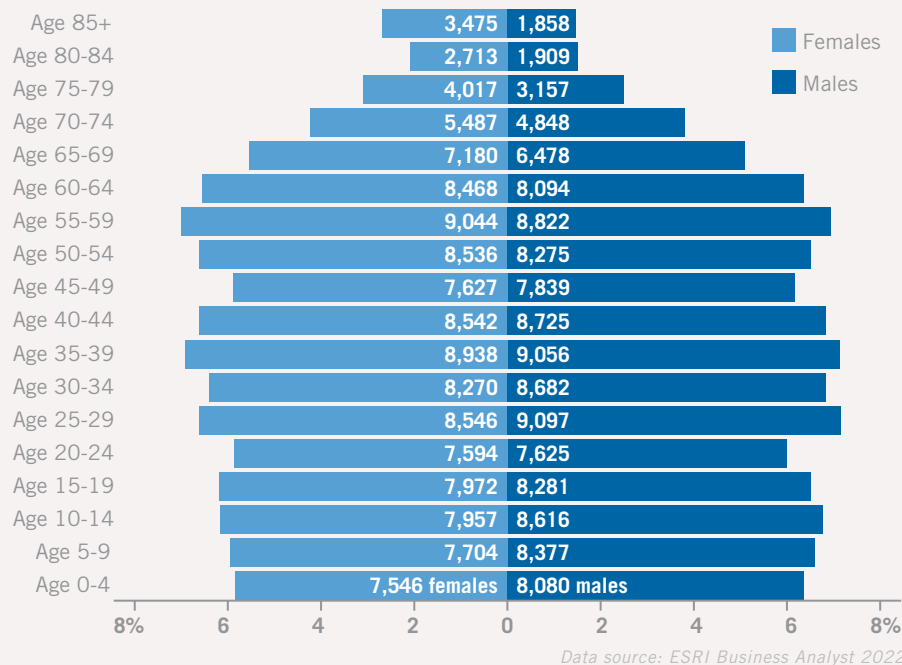
## LAND USE & POPULATION APPLETON MPO

The Appleton (Fox Cities) MPO includes portions of Calumet, Outagamie, and Winnebago counties, wrapping around the north end of Lake Winnebago. The current population within the MPO planning boundary is 257,432. From 2020 to 2040, the Wisconsin Department of Administration predicts the population of the tri-county region will climb by approximately 40,000 people.

### Existing Land Use



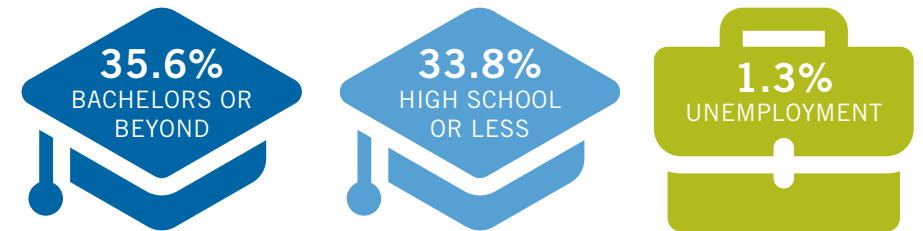
### Population by Age



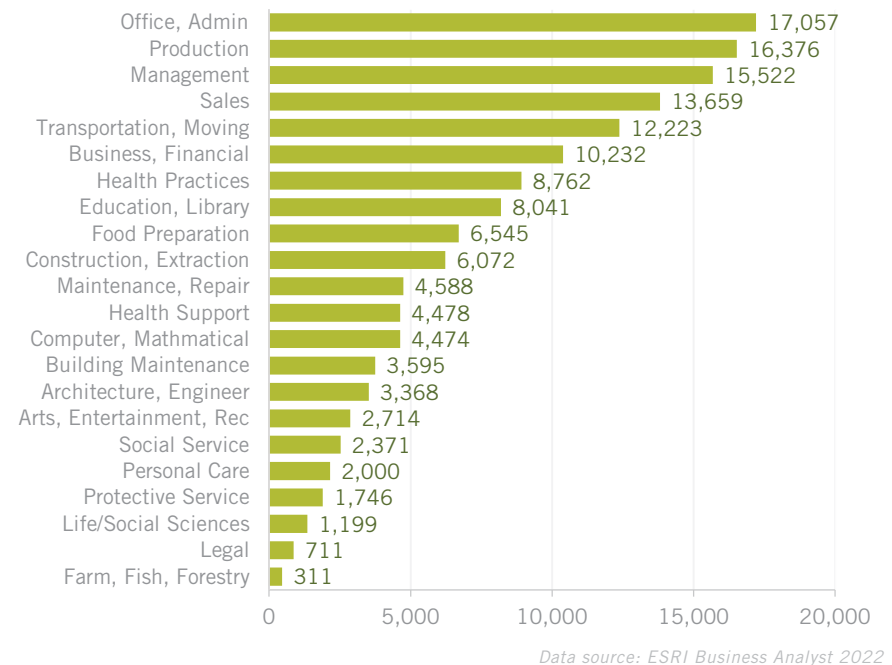
## EMPLOYMENT APPLETON MPO

The Appleton (Fox Cities) MPO's vibrant business community is made up of 9,109 businesses with 147,939 total employees. White collar workers constitute 63% of the labor force, while 37% of laborers are blue collar and service workers. There are also three college-level campuses within the MPO: Lawrence University, Fox Valley Technical College, and the Fox Cities campus of UW Oshkosh.

### Employment Quick Facts



### Number of Employees by Occupation



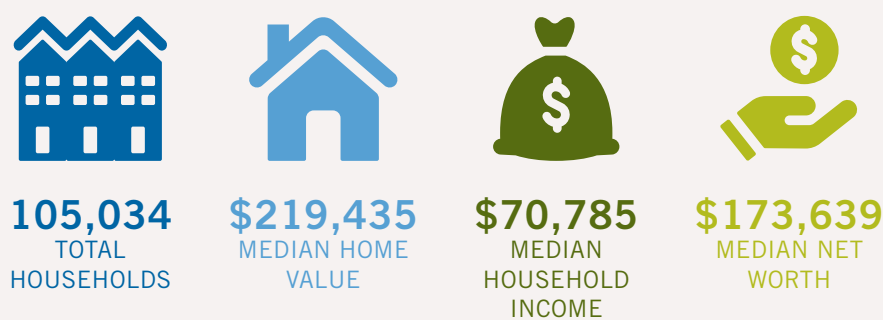


# HOUSING & INCOME

APPLETON MPO

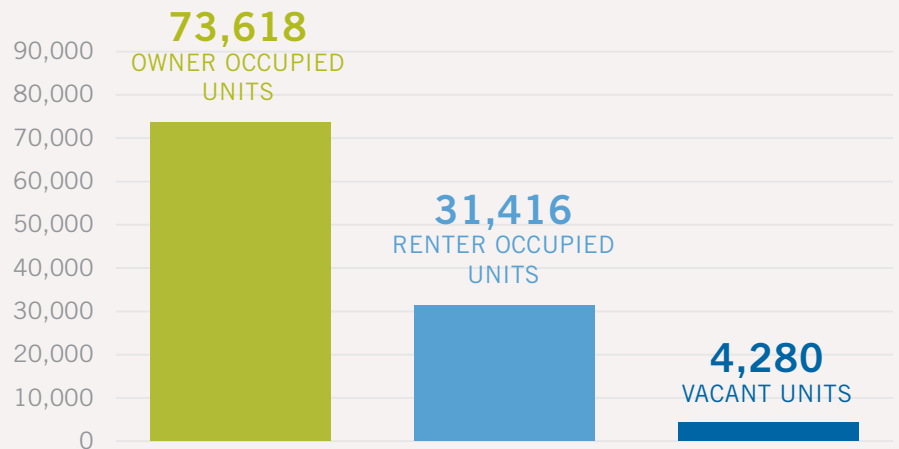
There are an estimated 105,034 households within the Appleton (Fox Cities) MPO planning area, with an average household size of 2.41 people. The Wisconsin Department of Administration predicts that household growth within the MPO will be significant, adding about 22,000 households from 2020 to 2040. In total, 7,681 households receive SNAP benefits and 29,920 receive social security income.

## Housing & Income Quick Facts



Data source: ESRI Business Analyst 2022

## Housing Occupancy Estimates



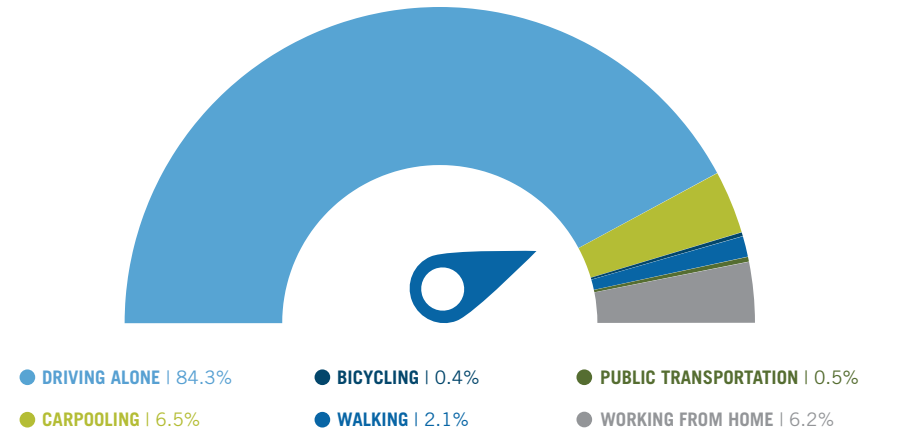
Data source: ESRI Business Analyst 2022

# COMMUTING

APPLETON MPO

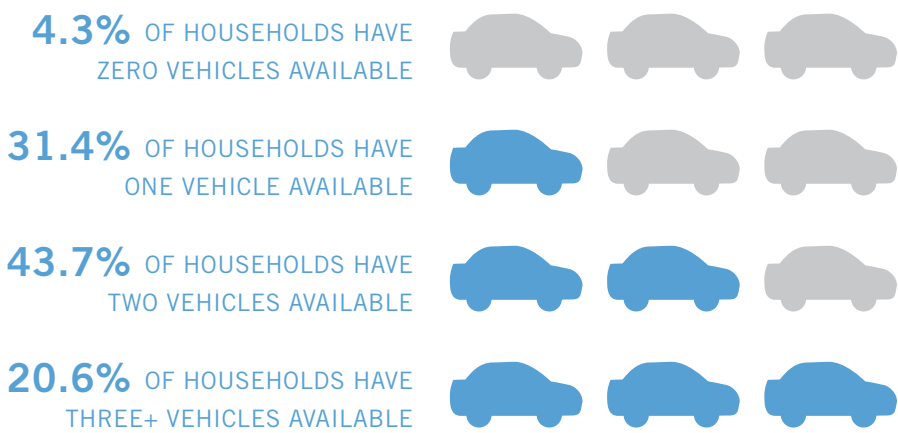
There are approximately 122,675 people commuting within the Appleton (Fox Cities) MPO. In 2020, 38% of people commuted to work in less than 15 minutes, 46% commuted in 15-30 minutes, and 16% commuted in over 30 minutes. While 85% of commuters rely on a personal vehicle to drive to work, it should be noted that 4.3% of households do not have access to a vehicle.

## Means of Transportation to Work



Data source: ESRI Business Analyst 2022

## Vehicle Availability



Data source: ESRI Business Analyst 2022





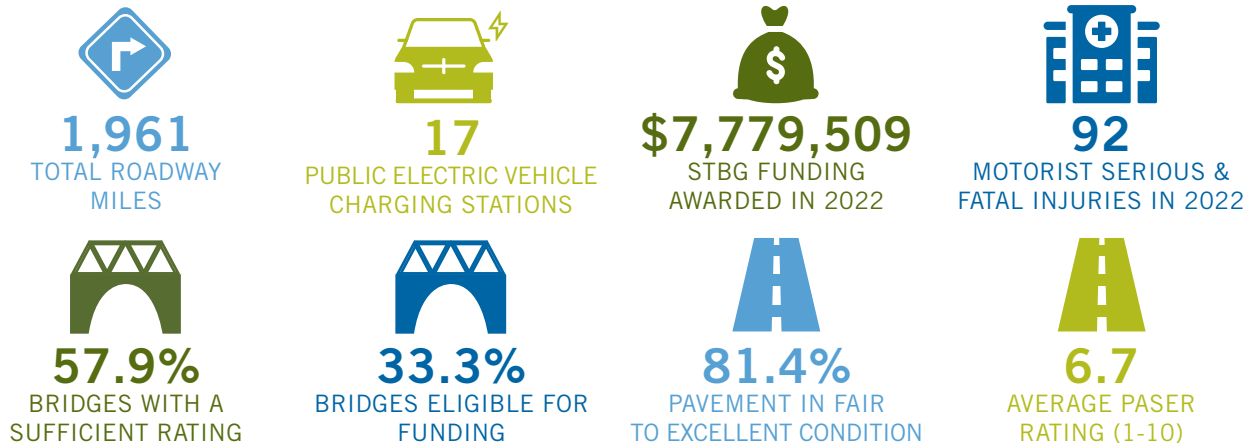
## APPLETON (FOX CITIES) MPO PERFORMANCE MEASURES



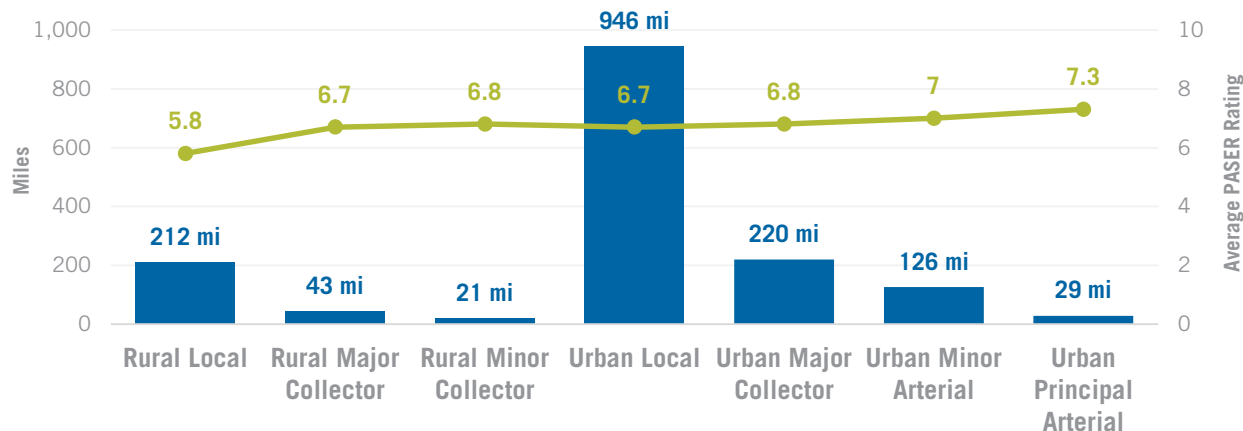
# ROADWAYS APPLETON MPO

Roadways and bridges within the Appleton (Fox Cities) MPO are used to deliver products and connect people to essential resources by car, truck, bike, and bus. Residents are highly dependent on automobile transportation, and 81% of the area's roadways are in fair to excellent condition. ECWRPC develops the Transportation Improvement Program (TIP) report annually, highlighting upcoming roadway projects in the TMA. The 39 TIP projects recorded between 2022 and 2025 will leverage state and local dollars to bring in nearly 75% of projects costs from federal grants, valued at \$115.7 million.

## Roadway Performance Measures



## NHS Roadway Mileage by Functional Class and Average PASER Rating



*Crash, bridge, PASER, functional class data: WisDOT 2022. EV charging data: BTS 2022. Roadway miles, TIP data: ECWRPC 2022.*

## ROADWAY FUNDING AWARDED BY ECWRPC IN THE APPLETON (FOX CITIES) MPO

2022

ROADWAY **W. SPENCER ST.**  
COMMUNITY TOWN OF GRAND CHUTE  
FUNDING STBG (22-27 CYCLE)  
AMOUNT \$2,066,464

ROADWAY **INT. OF CTH JJ & CTH N**  
COMMUNITY OUTAGAMIE COUNTY  
FUNDING STBG (BIL 22)  
AMOUNT \$1,142,609

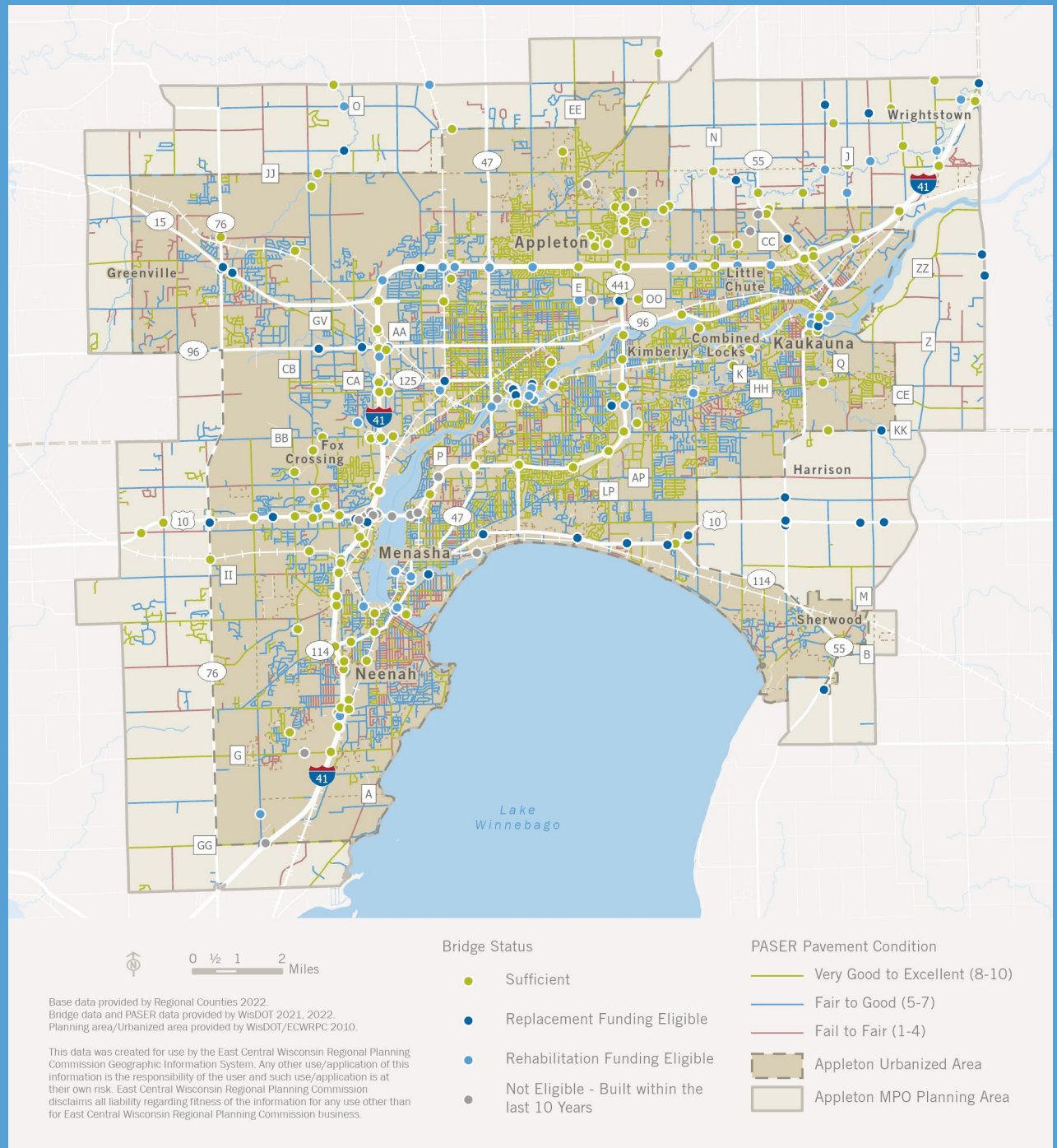
ROADWAY **LAWE ST.**  
COMMUNITY CITY OF APPLETON  
FUNDING STBG (BIL 23)  
AMOUNT \$2,793,634

ROADWAY **SHADY LN.**  
COMMUNITY VILLAGE OF FOX CROSSING  
FUNDING STBG (BIL 23)  
AMOUNT \$1,776,802



# ROADWAYS

## PASER CONDITION & BRIDGE STATUS

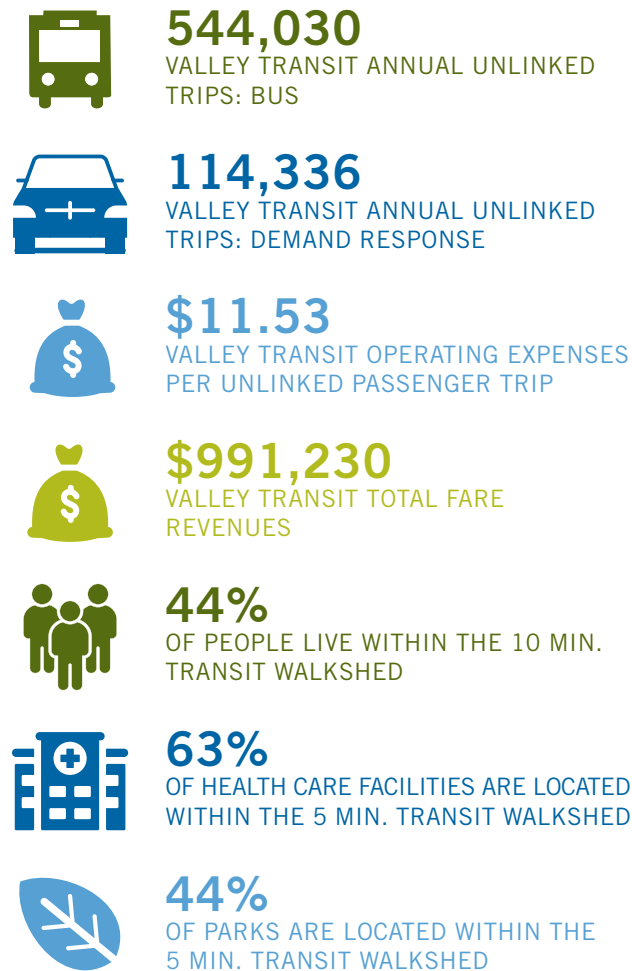




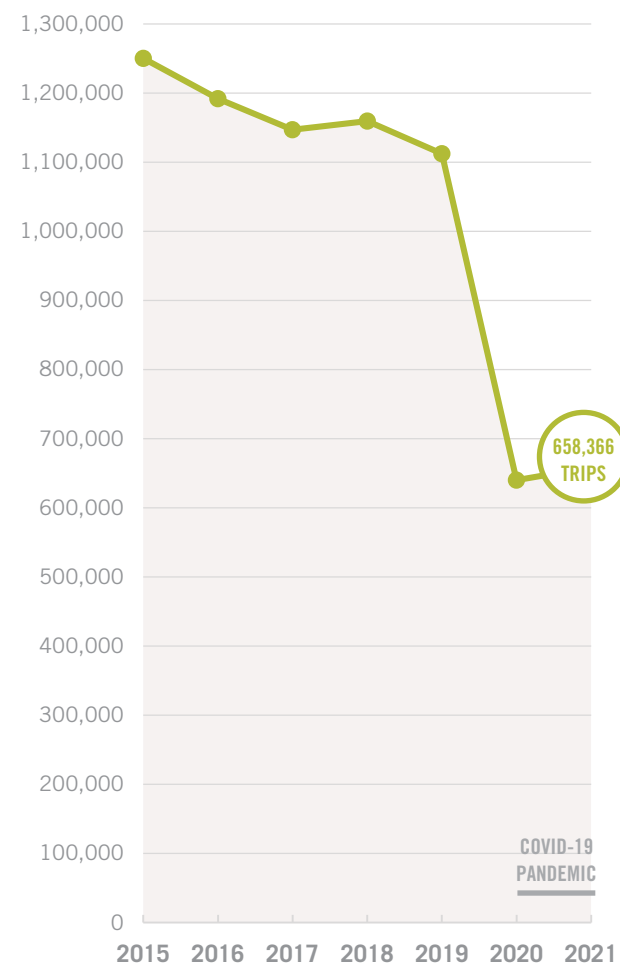
# TRANSIT APPLETON MPO

Public Transit in the Fox Cities area has come in many forms, beginning with hydroelectric-powered trolley cars in the 1880s and diesel buses in the 1930s. Today, Valley Transit operates around 20 fixed bus routes, paratransit vans (VT II), and demand response services (VT Connector) to meet a wide range of rider needs. The Downtown Trolley is free and carries passengers to summer events in Appleton. Valley Transit also offers guidance and travel training to help community members learn how to ride the bus and how to plan the most efficient routes. Amtrak offers a connecting bus stop in Appleton that makes two round trips daily from Green Bay to Milwaukee.

## Transit Performance Measures



## Valley Transit: Total Annual Unlinked Trips



Unlinked trips, revenue data: FTA 2021. Population, hospitals, parks data: ECWRPC 2022.

## TRANSIT SERVICES IN THE APPLETON (FOX CITIES) MPO



### VALLEY TRANSIT PUBLIC TRANSPORTATION



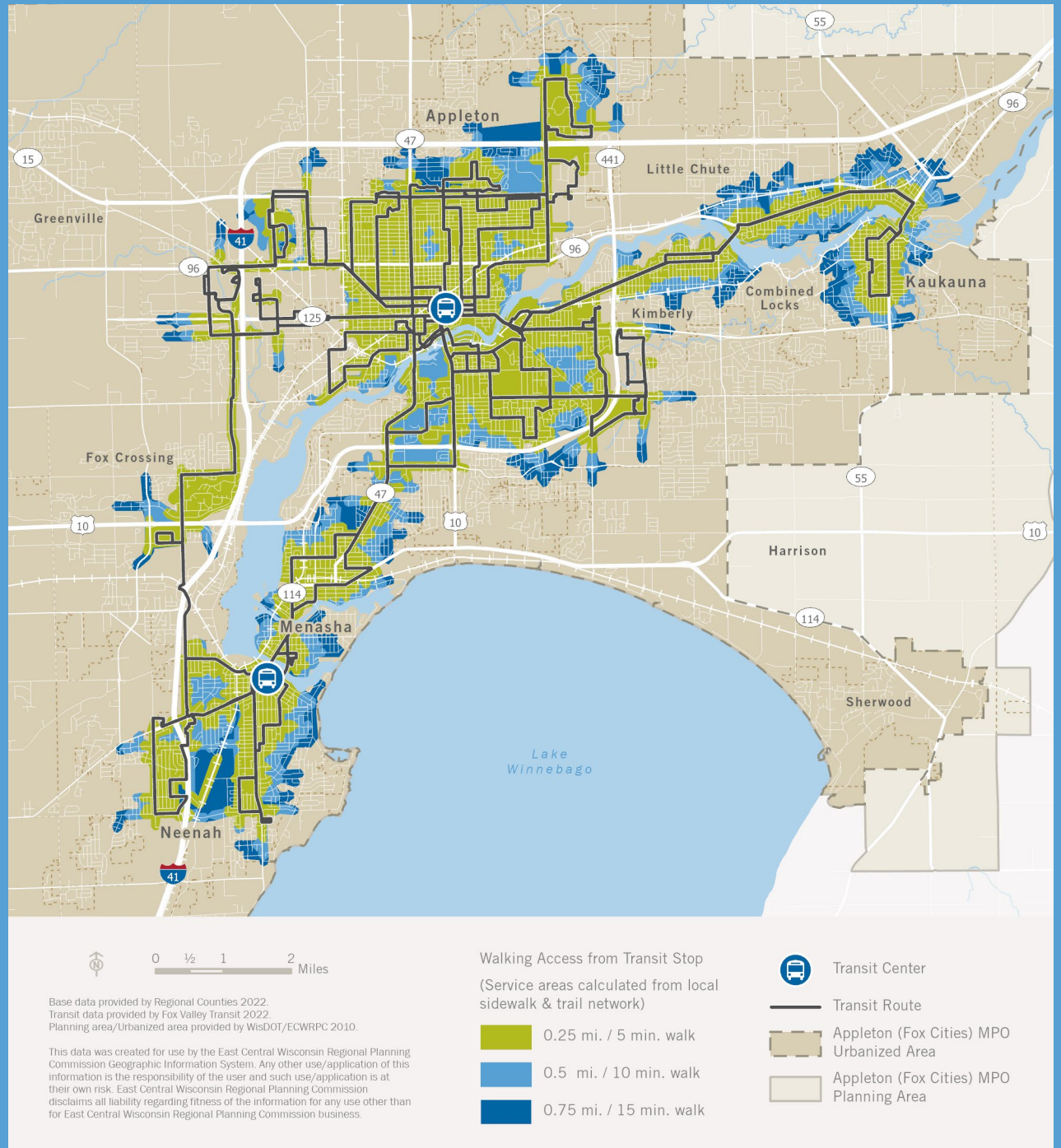
### VALLEY TRANSIT II PARATRANSIT SPECIALIZED TRANSPORTATION



### THE CONNECTOR, DIAL-A-RIDE, & MAKE THE RIDE HAPPEN SPECIALIZED TRANSPORTATION



# TRANSIT VALLEY TRANSIT WALKSHEDS

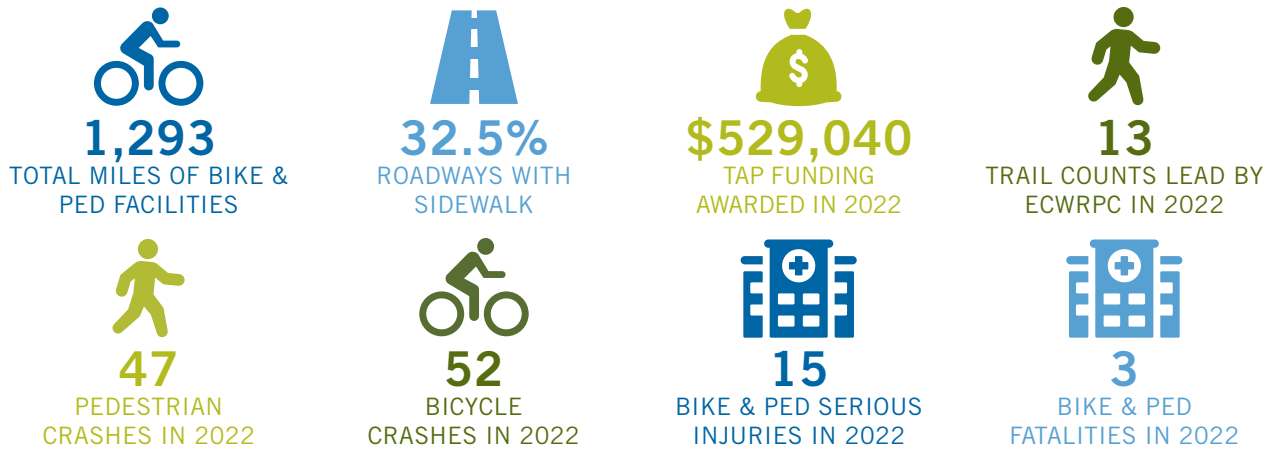




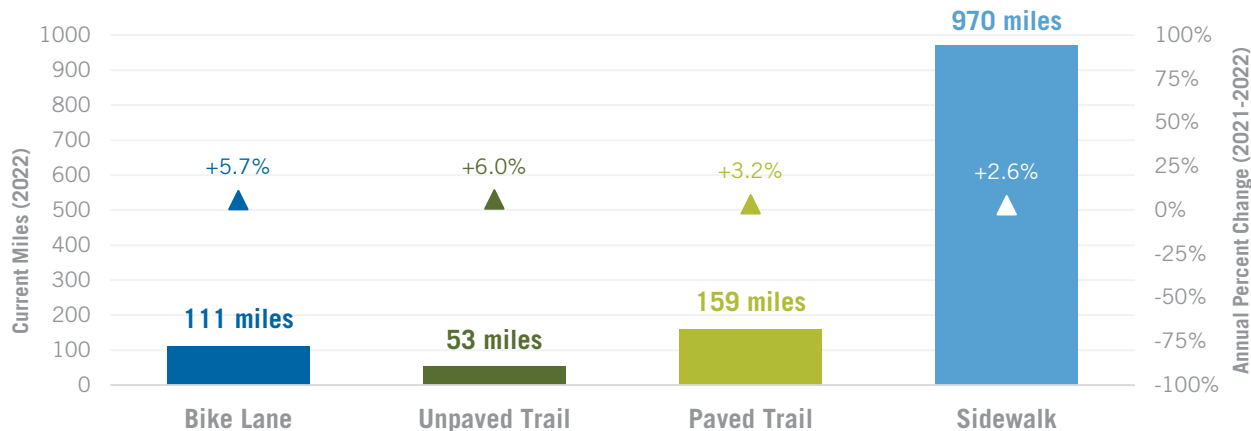
# BICYCLE & PEDESTRIAN NETWORK APPLETON MPO

Bicycling and walking are popular forms of recreation and exercise that also serve an important transportation function. Guided by the vision of local, county, and regional plans, the bicycle and pedestrian network in the Appleton (Fox Cities) MPO has grown steadily in recent years. Notable regional projects to expand the network include Loop the Little Lake, Loop the Locks, and the High Cliff Connection. Popular trails in the MPO include the CB Trail, the CE Trail, Apple Creek Trail, Newberry Trail, and the Friendship Trail.

## Bicycle & Pedestrian Performance Measures



## Bicycle & Pedestrian Facility Mileage and Annual Change



Crash data source: WisDOT 2022. Bike/ped facility source: ECWRPC 2022.

## COMPLETE STREETS

Complete streets are for everyone, no matter who they are or how they travel. Each street should be examined in its own context to determine the appropriate bicycle and pedestrian facilities.



### SPACE FOR PEOPLE

Curb ramps, crosswalks, curb extensions, sidewalks



### SPACE FOR BIKES

Bike lanes, trails, wide paved shoulders



### SPACE FOR CARS

Roundabouts, narrower travel lanes, traffic calming



### SPACE FOR MASS TRANSIT

Bus pullouts, shelters, transit-only lanes



### SPACE FOR SHARED MOBILITY

Shared bike and scooter parking, median islands

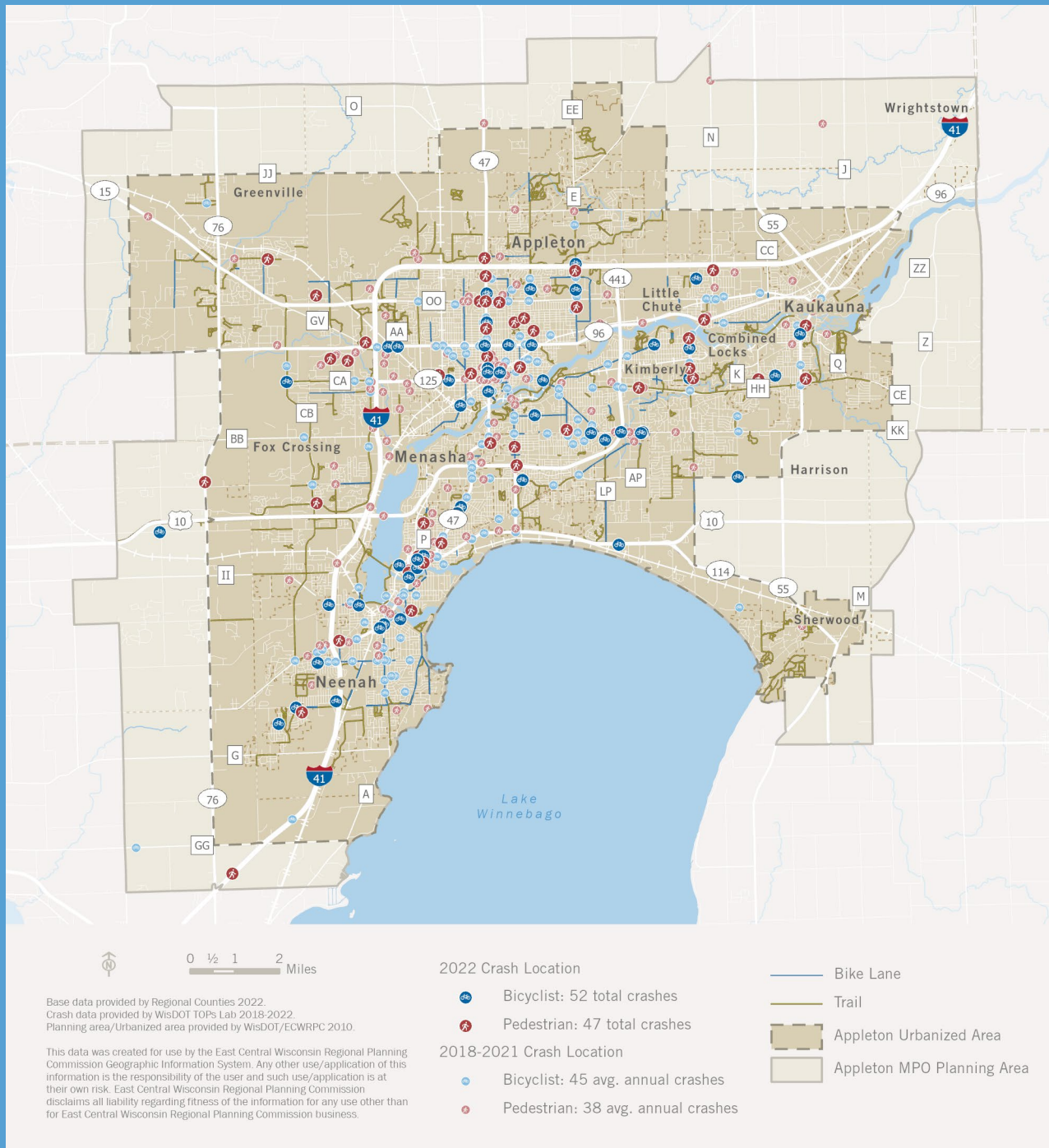


### SPACE FOR COMFORT & CULTURE

Street furniture, parks, public art, lighting



# BICYCLE & PEDESTRIAN NETWORK CRASH DENSITY





# SAFE ROUTES TO SCHOOL APPLETON MPO

By working to make it safer and more appealing for students to walk and bike to school, the Regional Safe Routes to School (SRTS) Program is continually making strides to improve childhood health, reduce traffic congestion and pollution, and create more-livable communities. Current funding for this program allows staff to work with students in Kindergarten through eighth grade. However, new funding from the Bipartisan Infrastructure Law would allow for high schools to participate in programming. In 2022, staff completed a Local School District Action Plan for the Menasha School District and conducted bicycle safety education for three schools in the MPO.

## Annual School Participation

| School District                  | # of Schools | # of Events |
|----------------------------------|--------------|-------------|
| Appleton Area School District    | 13           | 34          |
| Hortonville Area School District | 3            | 4           |
| Kaukauna Area School District    | 4            | 9           |
| Kimberly Area School District    | 3            | 10          |
| Little Chute School District     | 1            | 2           |
| Menasha Joint School District    | 3            | 6           |
| Neenah Joint School District     | 4            | 9           |

## SRTS Performance Measures



**32%**

OF ALL K-8 SCHOOLS ARE PARTICIPATING IN THE SRTS PROGRAM



**24**

SCHOOLS PARTICIPATED IN INTERNATIONAL WALK TO SCHOOL DAY



**24**

SCHOOLS PARTICIPATED IN BIKE TO SCHOOL MONTH



**10**

SCHOOLS PARTICIPATED IN FREQUENT WALKER PROGRAM



**1**

SCHOOL PARTICIPATED IN YOUTH ENGAGEMENT PROGRAM



**5**

SCHOOLS PARTICIPATED IN WALKING SCHOOL BUS PROGRAM



**10**

SCHOOLS PARTICIPATED IN WINTER WALK TO SCHOOL MONTH

*SRTS data: ECWRPC 2022.*

## GUIDING PRINCIPLES THE SIX E'S



EQUITY



ENGAGEMENT



EVALUATION



ENGINEERING



ENCOURAGEMENT

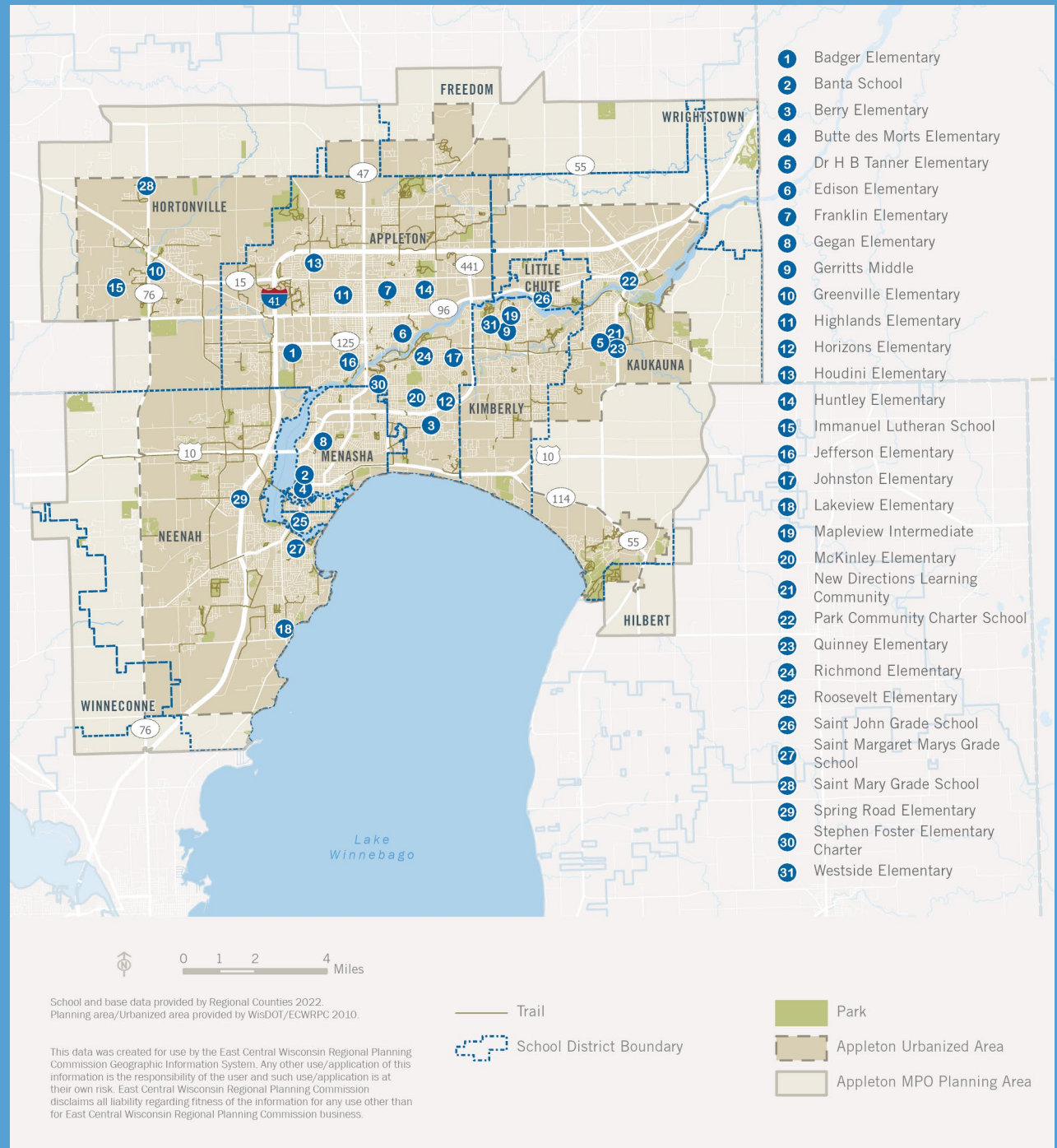


EDUCATION



# SAFE ROUTES TO SCHOOL

## PARTICIPATING SCHOOLS & SCHOOL DISTRICTS

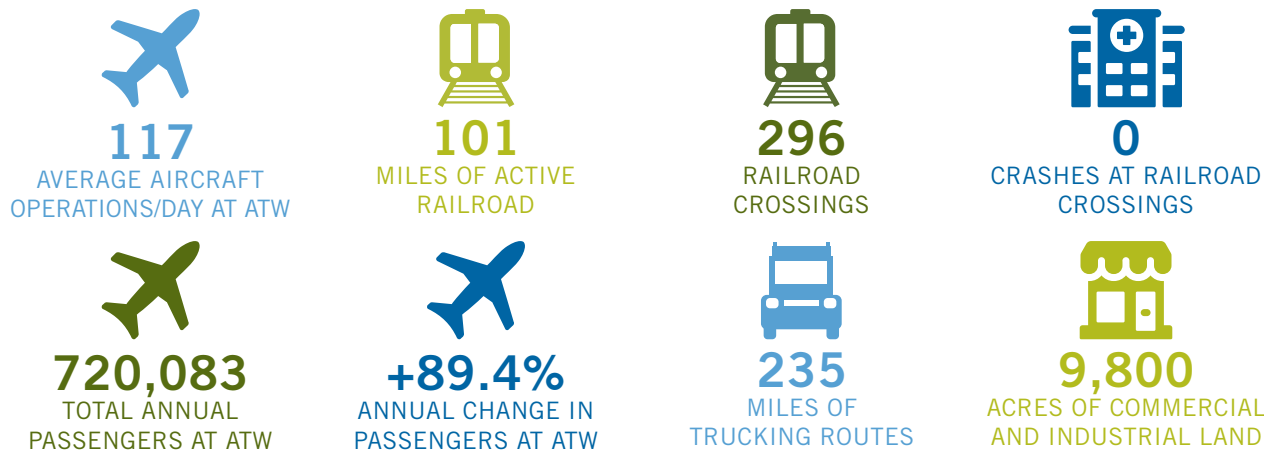




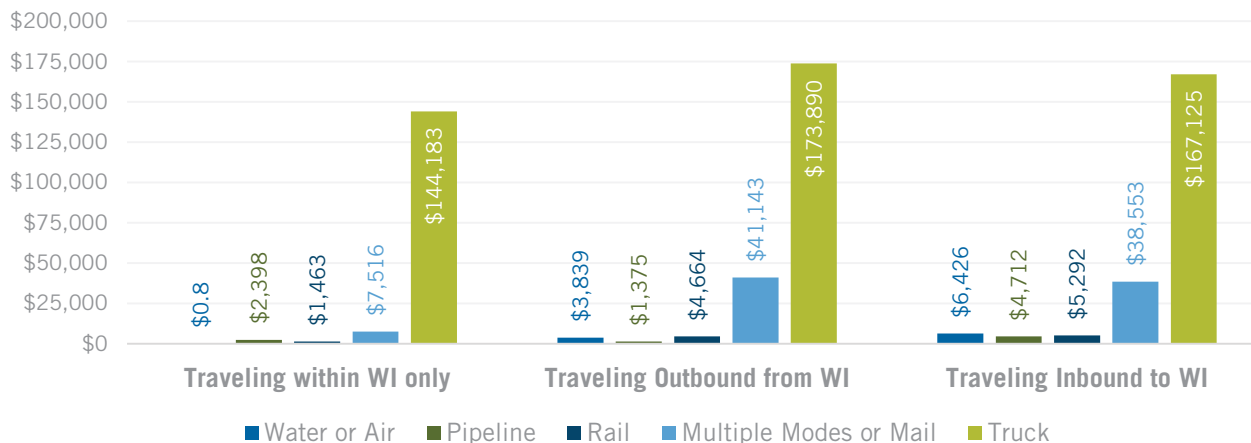
# FREIGHT & AIRPORTS APPLETON MPO

Freight and natural resources move through the Appleton (Fox Cities) MPO via air, water, pipeline, rail, and truck. Semi-trucks traveling along highways shoulder most of the load in the area. In 2021, WATCO purchased 650 miles of rail line in Wisconsin and Michigan, opening the potential for passenger rail alongside freight in the MPO. Appleton International Airport (ATW) serves the Fox Cities area and beyond. ATW offers direct flights to 15 destinations via five commercial airlines. ATW also processes freight and mail, carrying 20 million lbs. in 2021.

## Freight & Airport Performance Measures



## Shipment Value by Transportation Mode in Wisconsin (million U.S. dollars)



Airport data: AirNav 2022 & ATW 2021. Rail Data: BTS 2022. Freight data: Freight Analysis Framework 2022 projections. Crash data: WisDOT 2022.

## ALL FREIGHT MOVEMENT IN WISCONSIN

### TOP TRADING PARTNERS

| STATE     | 1000 TONS | OVERALL % |
|-----------|-----------|-----------|
| WISCONSIN | 325,022   | 69.9%     |
| ILLINOIS  | 21,436    | 4.6%      |
| TEXAS     | 21,347    | 4.6%      |
| MINNESOTA | 21,289    | 4.6%      |

### TOTAL SHIPMENTS BY WEIGHT

| MOVEMENT         | 1000 TONS |
|------------------|-----------|
| INBOUND          | 137,956   |
| OUTBOUND         | 139,865   |
| WITHIN WISCONSIN | 325,022   |
| TOTAL            | 602,843   |

### TOTAL SHIPMENTS BY VALUE

| MOVEMENT         | MILLION U.S. DOLLARS |
|------------------|----------------------|
| INBOUND          | \$222,284            |
| OUTBOUND         | \$225,190            |
| WITHIN WISCONSIN | \$155,561            |
| TOTAL            | \$603,035            |



# FREIGHT & AIRPORTS

## ROUTES AND RESTRICTIONS







## RESOURCES



# TRANSPORTATION PROGRAMS & MAP LINKS

East Central Wisconsin Regional Planning Commission (ECWRPC) provides the information and planning services necessary to solve problems that transcend the boundaries and fiscal capabilities of individual governmental jurisdictions. In addition to administering the MPO program, ECWRPC provides planning and technical assistance to participating governments with issues of concern to that jurisdiction. ECWRPC's planning and technical specialists are responsible for the following transportation programs in the Fox Cities area.



## PUBLIC TRANSIT & SPECIALIZED TRANSPORTATION PLANNING

ECWRPC helps communities plan and fund shared ride vehicle services that provide reliable, efficient, and essential connections to all of life's important destinations.



## BICYCLE & PEDESTRIAN PLANNING

ECWRPC brings WisDOT, local governments and bicycle/pedestrian advocacy groups together to develop and coordinate multi-modal trail systems and activities.



## SAFE ROUTES TO SCHOOL PLANNING

The ECWRPC Regional Safe Routes to School program focuses on empowering local communities and school districts with the resources and knowledge needed to implement SRTS activities.



## REGIONAL HIGHWAY CORRIDOR PLANNING

ECWRPC provides a multi-jurisdictional forum for stakeholders that promotes coordination and cooperation between state and federal agencies, local governments, and the public.



## FREIGHT PLANNING

ECWRPC coordinates the safe, secure, and efficient movement of freight into, out of, and between communities, ensuring this critical component of economic viability and quality of life runs smoothly.



## LONG RANGE TRANSPORTATION PLANNING

ECWRPC researches and outlines planning processes for infrastructure and programs covering all modes of transportation in the region to comply with federal and state planning requirements.



## REGIONAL TECHNICAL ASSISTANCE

ECWRPC provides services and guidance to counties and local units of government as part of WisDOT's Regional Transportation Program.



## COMMUNITY PLANNING ASSISTANCE

Municipalities can contract with ECWRPC for staff expertise in areas such as Transportation Planning, Regional Comprehensive Planning, Open Space and Recreation Planning, and GIS.

## TRANSPORTATION HUB

A variety of online mapping applications are hosted on the ECWRPC Transportation Hub to assist with performance measure monitoring. Click the buttons below to visit each interactive map or dashboard.



