

# Challenges and Opportunities in Transportation



## **CAPITALIZING ON TRANSPORTATION**

**DEREK MUENCH**  
**DIRECTOR OF TRANSIT & PARKING**  
**SHORELINE METRO (SHEBOYGAN)**  
**(920) 459-3140**  
**DMUENCH@SHORELINEMETRO.COM**

# Challenges and Opportunities Capitalizing on Transportation



## ❖ Overview: Shoreline Metro (Sheboygan)

- ❖ 550,000 trips annually (FR) & 35,000 trips annually (para)
- ❖ Fleet of 23 FR buses and 10 Paratransit buses
- ❖ Over 60 employees

## ❖ Challenges: Capital Funding

## ❖ Opportunities: Federal & State Funding

- ❖ 5339 State of Good Repair
- ❖ CMAQ
- ❖ 5310 Health & Human Services
- ❖ Local

# Challenges and Opportunities Capitalizing on Transportation



## ❖ Current State of (Dis)Repair

- ❖ At least 36% of Wisconsin's transit fleet is past useful life
  - ❖ 270 buses of a fleet of 750+
- ❖ 86% of transit fleets have NO funding secured
- ❖ 1/3 of public transit agencies require MAJOR facility or equipment upgrades

## ❖ Capital Funding Investment

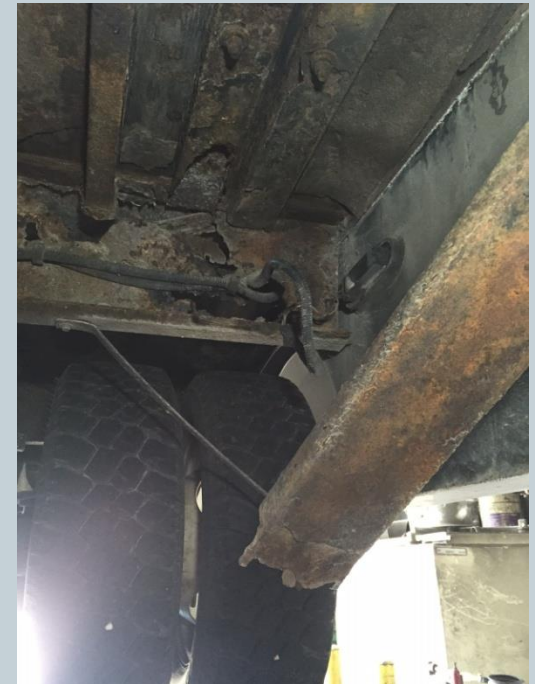
- ❖ Under SAFETEA-LU, Wisconsin received \$12M annually for capital; current levels are around \$6.3M
- ❖ Current estimates project a need of \$36M in capital funding; shortfall is estimated at \$24M annually

# Challenges and Opportunities Capitalizing on Transportation



## ❖ Current State of (Dis)Repair

- ❖ La Crosse: 75% of buses over useful life (500,000+ miles)
- ❖ Sheboygan: 50% of paratransit buses over useful life (150,000+miles)
- ❖ Many systems purchase used or refurbished buses for revenue service
- ❖ Many systems have NO buses secured in the next 3-5 years
- ❖ Purchase price of paratransit buses continue to increase, diminishing quality
- ❖ Maintenance/operating costs are rising
- ❖ No commitment to funding transit!



# Challenges and Opportunities Capitalizing on Transportation



## ❖ Useful Life

- ❖ Heavy Duty buses (FR):
  - ❖ 12 years/500,000 miles
- ❖ Light/Medium Duty buses (Para):
  - ❖ 7 year/150,000 miles

## ❖ Costly Components

- ❖ Securements rusting
- ❖ Engines/transmissions
- ❖ Failing video equipment
- ❖ Outdated/unreliable fareboxes



# Challenges and Opportunities Capitalizing on Transportation



## ❖ Where Do We GO From Here:

- ❖ Urgent demand for capital funding
  - ❖ State, Federal and Local
  - ❖ Long-term funding
  - ❖ No more deferring!
- ❖ RTA Authority Enabling Legislation
- ❖ State Transit Capital Investment Program
  - ❖ \$15M discretionary program
- ❖ Increases to 5339/5310 funding
  - ❖ Buses and bus facility
- ❖ Commitment to “Just Fix It”

# Challenges and Opportunities Capitalizing on Transportation



## ❖ Be Involved

### ❖ WURTA

- ❖ Wisconsin Urban & Rural Transit Association
- ❖ [www.wurta.com](http://www.wurta.com)

### ❖ WURTA Fall Conference

- ❖ October 4-6 in Green Bay, WI
- ❖ Register online at [www.wurta.com](http://www.wurta.com)
- ❖ “Capitalizing on Transit”

### ❖ Work with Local Transit Agencies

- ❖ Don't forget about Capital projects in planning process
- ❖ Recommend funding sources/Be aware of local opportunities
- ❖ Instrumental documentary in event of management turnover

# Challenges and Opportunities Capitalizing on Transportation



## Let's Prevent the Future...





# Challenges and Opportunities Capitalizing on Transportation



# Thank You.

Derek Muench

Director of Transit & Parking  
Shoreline Metro (Sheboygan)

(920) 459-3140

[dmuench@shorelinemetro.com](mailto:dmuench@shorelinemetro.com)

