



# CITY OF BRILLION

## COMPREHENSIVE PARK and OUTDOOR RECREATION PLAN

2012 - 2016

CITY OF BRILLION

COMPREHENSIVE PARK AND  
OUTDOOR RECREATION PLAN

Prepared by the  
City of Brillion Park and Recreation Commission  
and the  
East Central Wisconsin Regional Planning Commission

Adopted April 24, 2012



## **ACKNOWLEDGMENTS**

The preparation of the Brillion Comprehensive Park and Outdoor Recreation Plan was a combined effort of the Park and Recreation Commission and the East Central Wisconsin Regional Planning Commission. The plan was adopted by the Brillion Common Council on April 24, 2012.

### **CITY OF BRILLION COMMON COUNCIL**

Gary Deiter, Mayor  
Betty Nies  
Carrie Wenzel  
Mel Edinger  
Steve Schleis  
Mike Horn  
Larry Van Frachen  
Heather Gruett  
Cheryl Welch  
Robert Brick

### **CITY OF BRILLION PLAN COMMISSION**

Mayor, Gary Deiter, Chairman  
Gerald Sonnabend, Vice Chair  
Cheryl Welch, Council Rep.  
Al Ebert, Park & Rec Rep.  
Zane Zander  
Garett Zimpel  
Robert Mathiebe

City Administrator, Lori Gosz, ex-officio, non-voting  
Building Inspector, Mike Angoli, ex-officio, non-voting  
Comm. Dev. Director, Wayne Volkman, ex-officio, non-voting

### **CITY OF BRILLION PARK AND RECREATION COMMISSION**

Al Ebert, Chairman  
Robert Brick, Council Rep.  
Dennis Miller  
Mark Rajkovich  
Joe Behnke  
Tim Hanson  
Andy Geiger  
Ann Marx, Rec. Dir., ex-officio, non-voting

Trish Nau, GIS Coordinator, Recreational Planner, ECWRPC



## TABLE OF CONTENTS

INTRODUCTION .....	1
General Characteristics .....	1
Population .....	1
History of Past Planning.....	3
GOALS AND OBJECTIVES .....	4
RECREATIONAL RESOURCES .....	7
Area Natural Resources and Recreational Sites .....	7
Recreation Facilities in Brillion .....	9
Recreation Program.....	14
RECREATIONAL NEEDS .....	17
Land Needs.....	17
Locational Needs .....	18
Facility Needs.....	19
PLAN RECOMMENDATIONS .....	21
Facility Development .....	21
Program Development .....	30
Other Recommendations .....	30
ACTION PROGRAM.....	37
RESOLUTION OF ADOPTION .....	40
TABLES.....	
TABLE 1, Population Trends and Projections 1970-2030 .....	2
TABLE 2, Population Distribution by Age Group .....	2
TABLE 3, Existing Park and Recreation Acreage 2011 .....	9
TABLE 4, Sponsored Recreational Programs .....	15
TABLE 5, Brillion Outdoor Quantitative Open Space Demand (Acres .....	18

MAPS.....	
MAP 1, Existing Recreational Sites .....	10
MAP 2, Aerial View of Horn Park.....	25
MAP 3, Aerial View of Heritage Park .....	27
<b>MAP 4, Aerial View of Peter’s Athletic Park</b> .....	33
MAP 5, Trail Routes, Existing and Proposed .....	35
APPENDICES.....	
Appendix A	
On-line Survey Results .....	A-1
Appendix B	
Inventory of Recreational Facilities .....	B-1

## **INTRODUCTION**

### **GENERAL CHARACTERISTICS**

The City of Brillion is located in the northeastern portion of Calumet County, about 20 miles east of Appleton, 25 miles south of Green Bay, and 25 miles northwest of Manitowoc. USH 10, linking Manitowoc and Appleton, angles across the northern portion of the city and CTH PP funnels primarily local traffic into the community from the north and south and is flanked by the city's downtown business district, which is located a few blocks south of Highway 10.

Brillion is surrounded on three sides by rolling hills and heavily textured soils and the fourth side by Brillion Marsh. The topography within the city is relatively flat, generally fluctuating between 830 feet above sea level in the northern and eastern portions of the city to 810 feet in the southern and western portions.

### **LAND USE**

Major land uses in Brillion are commercial, residential and industrial. Most of the commercial establishments are located along Main Street, County Highway PP, in the central portion of the city. Other commercial establishments are located along West Ryan Street (USH 10).

Brillion has long been known for its strong industrial base. Industrial areas in the northeastern portion of the community include the Brillion Iron Works and the Farm Equipment Division of Landoll Corporation. The Ariens Company is a major industrial site located in the northwestern part of the city as well as Endries International and Professional Plating.

Residential areas are scattered throughout the city, with the largest concentrations in the north central and southeast sections. Older residential areas are located in the central and northern portions of the city. The southeastern part of the city has been largely developed in the last 20 years and contains most of Brillion's multifamily housing. A well-established mobile home park is situated along South Glenview Avenue on the city's western boundary.

### **POPULATION**

Brillion's 2010 population was 3,148, compared with 2,907 in 1970, an 8.3 percent increase (Table 1). The latest Wisconsin Department of Administration (DOA) estimates suggest the city's population had increased to 2,969 by January 1, 2004, reflecting a growth of 4.5 percent since 1990. Projections indicate that Brillion's population will



experience a percent change of +3.0% from 2015-2020 with a slight increasing trend through the year 2030, when its population is projected at 3,381.

**TABLE 1**  
**POPULATION TRENDS AND PROJECTIONS, 1970-2030**  
**City of Brillion**

Year	Population	Percent Change
1970	2,588	---
1980	2,907	12.30
1990	2,840	-2.30
2000	2,937	3.42
2010	3,148	7.18
2015 proj.	3,189	1.32
2020 proj.	3,231	3.00
2025 proj.	3,315	2.64
2030 proj.	3,381	2.00

Sources: U.S. Census, 1970 – 2030 and DOA Population Projections, 2008. 2011 DOA Estimate = 3,172

The composition of a community's population can provide insight into the need for emphasizing specific types of recreational opportunities. The distribution of Brillion's population by age group is very similar to that of both the State of Wisconsin and Calumet County (Table 2).

**TABLE 2**  
**POPULATION DISTRIBUTION BY AGE GROUP, 2010**  
**City of Brillion**

	City of Brillion		Calumet County		State of Wisconsin	
Age Group	Number	%	Number	%	Number	%
Under 5	224	7.1	3,418	7.1	358,443	6.3
5 to 14	422	13.4	7,505	15.3	744,544	13.1
15 to 24	379	12.0	5,480	11.2	785,761	13.8
25 to 44	851	27.1	13,209	26.9	1,447,360	25.4
45 to 54	412	13.1	8,108	16.7	873,753	15.4
55 to 64	349	11.1	5,626	11.5	699,811	12.3
65 and Over	511	16.2	5,625	11.3	777,314	13.7
Totals	3,148	100.00	48,971	100.00	5,686,986	100.00

Source: U.S. Census 2010, Summary File 1.

## **RECREATION PLANNING IN BRILLION**

Work on updating Brillion's Open Space and Recreation Plan began in earnest in spring of 2011. The major reasons for updating the plan were to identify new recreational needs, reaffirm existing needs, develop a new action program based on these needs, and reestablish the city's eligibility in funding programs administered by the Wisconsin Department of Natural Resources (DNR). The plan reflects a joint effort of the City of Brillion Plan Commission and the Park and Recreation Commission, the City of Brillion Recreation and Parks Director, Community Development Director, and the East Central Wisconsin Regional Planning Commission.

In February, 2012, the plan was presented at a public hearing and subsequently recommended for adoption by the Brillion Plan Commission. The plan was adopted by the Brillion City Council on April 24, 2012. *(See Resolution, pg. 40 at end of document).*

## **HISTORY OF PAST PLANNING**

The need for providing adequate park and recreation areas has long been recognized in Brillion. Recommendations for parks and recreation span several plans, dating back to at least 1962, when the Master Plan for Brillion, prepared by Mead & Hunt, Inc. was prepared. An improvement program for parks and recreation was also discussed in the General Plan for Brillion, prepared by Candeub, Fleissig and Associates in 1967. Later plans include an Outdoor Recreation Plan for Brillion, prepared by the Wisconsin DNR in 1974.

The Brillion section of the Calumet County Outdoor Recreation Plan (1976), an updated action program which accompanied the City of Brillion Community Development Plan, prepared by the East Central Wisconsin Regional Planning Commission in 1979, and the City of Brillion Open Space and Recreation Plan, prepared by East Central in 1985 and amended as part of the Calumet County Outdoor Recreation Plan in 1987. A more recent, partial update of the Recreation Plan was done in 2005 but was not carried through to adoption by the Parks and Recreation Commission.

Of late, the City and Town of Brillion Smart Growth Plan, a multi-jurisdictional effort, was adopted in 2003 with amendments to the plan completed in 2009. The plan provided updated recommendations for the elements of smart growth including parks and recreation as well as open space. Calumet County also of late just adopted their Outdoor Recreation Plan in 2010.

The long history of planning in Brillion has enabled the city to monitor changing recreational needs and take necessary actions to maintain and upgrade its park system over the years. While routine park maintenance has generally been held to high standards, the lack of a consistent program of acquisition and development funds, as in many other communities, has prevented the city from undertaking all of the

improvements desired by its residents. Nonetheless, Brillion has been the recipient of substantial matching funds through DNR-administered programs over the years. Adoption of this plan will once again provide the city with an opportunity to augment local funding sources by restoring its eligibility to compete for outside funding for future park acquisition and development projects.

## **GOALS AND OBJECTIVES**

The following goals and objectives were identified by the Park and Recreation Commission as well as the City Plan Commission to serve as a guide for the type of park and recreation system community residents would enjoy. The goals are stated as desirable conditions to strive for in the future. They are common ideals of the community that can be achieved through the actions of government leaders, private organizations, and individual citizens. The corresponding objectives specify in greater detail how these desired goals can be achieved. Together, the goals and objectives create a framework for meeting the existing and future needs of the City of Brillion by providing a basis for establishing city policy to guide the planning, acquisition and future development of park and recreation facilities and open space.

**Goal: To ensure that adequate open space and recreation facilities are provided for and made accessible to all residents of Brillion.**

### **Objectives:**

- Provide a full range of recreational facilities to serve Brillion residents on a year-round basis.
- Provide park and recreation facilities to serve all existing and future residential areas.
- Preserve structures and sites that reflect the historical and natural heritage of the area.
- Design ADA accessible active and passive recreational areas and park facilities that can be utilized by the elderly and physically challenged citizens.

**Goal: To conserve, protect, and improve the environmental resources of the city and the surrounding area.**

**Objectives:**

- Ensure that the environmental and aesthetic qualities of the community are considered when planning for future development.
- Protect existing wooded areas and other unique natural areas from urban development.
- Protect environmentally sensitive areas such as floodplains and wetlands from urban development.
- Ensure that future development does not disrupt natural drainage ways in the community.
- Reduce the amount of damage which may occur from flooding.

**Goal: To encourage continued involvement of Brillion residents when planning for park and recreation development.****Objectives:**

- Encourage ongoing participation by all residents at Park and Recreation Commission meetings.
- Explore the support of community groups and service organizations for ways of funding and/or improvements to the parks system.
- Solicit comments from residents on all aspects of park and recreational programming and management.

**Goal: Initiate a plan for safe biking routes through the City linking up with existing trails and on-street paths both in the City and the surrounding areas.****Objectives:**

- Explore additional routes through the City by developing a bicycle and pedestrian master plan.
- Encourage utilizing the safe routes to school program to accomplish the goal.

(Page left blank intentionally)

## **RECREATIONAL RESOURCES**

A variety of natural features, public and private recreational facilities, and open space areas are available in the Brillion area. Within the city itself are six public and three private recreational facilities. City residents are also fortunate to have convenient access to several nearby recreational facilities and natural resources in Calumet and Manitowoc Counties.

### **AREA NATURAL RESOURCES AND RECREATIONAL SITES**

High Cliff State Park, the Brillion Conservation Club, the Brillion Nature Center, the Brillion State Wildlife Area, other extensive wetlands, Long Lake, and numerous smaller lakes are the primary natural resources located in the immediate Brillion area. In addition, a number of other significant recreational sites are located within an hour's driving time of Brillion.

#### **High Cliff State Park**

Located about 12 miles west of Brillion on Lake Winnebago, High Cliff State Park is extensively used by city residents and other residents in the Lake Winnebago area. The dominant feature of the 1,140 acre park is the Niagara Escarpment, known locally as the "ledge," which provides scenic panoramas of the northern portion of the Lake Winnebago area. Recreational opportunities available in the park include picnicking, camping, swimming, boating, fishing, and hiking, cross-country skiing, and snowmobile trails as well as access to a marina and adjoining golf course.

#### **Brillion Conservation Club**

Located south of the Brillion city limits on Sunset Drive, in the Town of Rantoul, the Brillion Conservation Club's 85 acres serve as a wildlife area. The site also contains a clubhouse and trap shoot and archery ranges. The facility and area is primarily for use by its members but also provides some public access. The site provides cross-country skiing and snowmobiling opportunities during the winter months and is located on the state snowmobile trail system, maintained in the area by the Deer Run Snow-Riders Snowmobile Club. These public trails link the Brillion area with other portions of Wisconsin as well as Minnesota and Upper Michigan.

#### **Brillion Nature Center**

Located southwest of Brillion on DNR land and a parcel of privately-owned easement, the site includes hiking trails, cross-country ski trails, a picnic area, and historic sites. A boardwalk with observation deck overlooking the marsh is an immediate plan. Also in the

planning stage is the development of a year round nature center with displays and materials for educational sessions. Major additions completed in the past three years include updated restrooms, new office and storage areas, a 100 student capacity classroom, and the staffing of a full-time naturalist.

## **Brillion State Wildlife Area**

The Brillion State Wildlife Area contains over 5,000 acres of publicly owned hunting and fishing land and is located west and southwest of Brillion. The North Branch of the Manitowoc River, Spring Creek, and Black Creek, flow through the area and provide modest fishing opportunities. The site provides excellent habitat and hunting opportunities for deer and other small game mammals. Waterfowl and pheasants are less extensively hunted on the site.

## **Long Lake**

Located about two miles southeast of Brillion in Manitowoc County, this 117 acre lake provides some surface water opportunities for local residents. A public access site is located on the northeast shore of Long Lake. The fisheries resource includes northern pike, bass and pan fish.

## **Other Natural Resources**

An extensive privately owned wetland area is located about two miles northeast of Brillion. A smaller wetland surrounds Grass Lake, about a mile south of the city. Other smaller named lakes in this area include Becker Lake, 32 acres, Round Lake, and Boot Lake, each about 10 acres in size. Public access is available for each of these three water bodies. In addition, Lake Winnebago, about 18 miles west of Brillion, and Lake Michigan, 25 miles east, are extensively used by Brillion residents. Spring Creek, an intermittent watercourse which flows southerly through Brillion before draining into Brillion Marsh, provides limited recreational opportunities within the city.

## **Other Public Facilities**

A number of other state and county operated facilities located within an hour's drive of Brillion also provide recreational opportunities for local residents. Calumet County Park, near Stockbridge, and Ledge Park, south of Chilton, are two important county facilities. In addition to High Cliff, other convenient state parks include Point Beach State Forest, Two Rivers; Kohler-Andrae State Park, Sheboygan; Old Wade House, Greenbush; Northern Unit of the Kettle Moraine State Forest, Dundee; and Heritage Hill State Park, Green Bay. Other major public hunting and fishing grounds are Killsnake, Sheboygan, and Collins marshes.

## RECREATION FACILITIES IN BRILLION

Brillion's recreational system offers a wide variety of recreational opportunities to local residents (Map 1). The Brillion Community Center, four city parks, a semi-private golf course, and three school sites provide both active and passive recreational activities. A total of 147.5 acres, of which 68.2 acres are publicly owned, are available for outdoor recreational use on these sites (Table 3). These facilities permit an extensive variety of recreational activities for participants of all ages. The City's cultural and historical resources are also of recreational value as they increase residents' knowledge of the past and enhance community pride and identity.

**TABLE 3**  
**EXISTING PARK AND RECREATION ACREAGE, 2011**  
**City of Brillion**

Map ID	Name	Acres	Ownership
6	Horn Park	19.0	City
5	Heritage Park	5.0	City
7	Peters Athletic Field	6.0	City
8	South Park	0.5	City
3	Community Center	-	
11	Future Open Space	2.7	City
2	Brillion Public Schools*	6.3	School District
1	Brillion High	28.7	School District
	Total Public	68.2	
10	Trinity Lutheran School	16.2	Private
9	Holy Family School	0.6	Private
4	Deer Run Golf Course	62.5	Private
	Total Private	79.4	
	TOTAL	147.5	

\*Serves Elementary and Middle School students.



# MAP 1

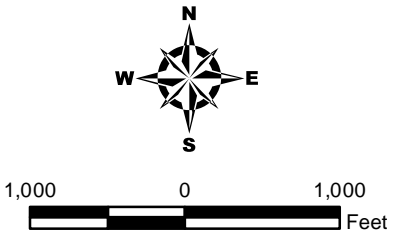
## EXISTING RECREATIONAL SITES

### City of Brillion

- Friendship State Trail
- Parcels
- School Athletic Fields
- Parks/Recreation

- Brillion High School
- Brillion Middle and Elementary School
- Community Center
- Deer Run Golf Course
- Heritage Park
- Horn Park
- Peters Park
- South Park
- Holy Family School
- Trinity Lutheran School
- Future Open Space 2.7 Acres

Source: Calumet County Land Information Deparment, 2011.



This data was created for use by the East Central Wisconsin Regional Planning Commission Geographic Information System's Department. Any other use application of this information is the responsibility of the user and such use application is at their own risk. East Central Wisconsin Regional Planning Commission disclaims all liability regarding fitness of the information for any use other than for East Central Wisconsin Regional Planning Commission business.

This map shows the approximate relative location of property boundaries but was not prepared by a professional land surveyor. This map is provided for informational purposes only and may not be sufficient or appropriate for legal, engineering, or surveying purposes.

Prepared By  
EAST CENTRAL WISCONSIN  
REGIONAL PLANNING COMMISSION- January, 2012

Back of Map 1

## **Public Recreational Facilities:**

**Brillion Community Center** (*Map 1 id 3*). The Brillion Community Center is the showpiece of the City's Park and Recreation Department and provides the cornerstone for its extensive recreation program. Located at 120 Center Street in the downtown area, it enables community residents to enjoy many recreational activities year around. The Center offers many programs including: Adult Recreation, Aerobics, Aquatic, Dance, Crafts/Hobby Workshops, Swimming Lessons, and Youth Recreation Programs.

Facilities include a swimming pool with a one meter diving board, toddler's wading pool, gymnasium, fitness room, racquetball court, game area and youth center. Also housed in the center is an assembly room, two conference rooms, kitchen, activity room, lounge area and locker room facilities.

**Horn Park** (*Map 1 id 6*). Horn Park, at 19 acres, is Brillion's largest and most diversified park. Located in the northeast portion of the city on North Parkway Drive adjacent to Brillion Iron Works, it serves as a traditional community park, providing a variety of recreational opportunities for all age groups. An elderly housing complex abuts the park to the south.

Most of the park's development is concentrated in the northern portion of the site, which is rolling and tree-covered. A significant number of mature oaks, which are also scattered in other portions of the park, highlight the area. Another prominent feature is a small man-made pond in the park's southwest corner. The city has maintained an active tree planting program to ensure that the park's character is preserved.

A soccer field, along with scattered play apparatuses integrated into the wooded area, provides active recreational opportunities.

Picnic facilities and benches are found primarily in the wooded area but have also been placed along the pond shoreline, so that both of the park's major natural features can be enjoyed by users. Support structures include a large pavilion; two concession stands; a band shell, which also serves as a picnic shelter; an adjacent open air amphitheater; a restroom building, constructed in 1980 with LAWCON funds; and a maintenance shed. Operation of the pavilion has recently been transferred to the Brillion Area Jaycees, who plan to upgrade the facility through a cost-sharing arrangement with the city.

A partially paved drive loops through the park, providing convenient access to all facilities. Little paved parking exists; parking on the grass along the roadway, however, is generally perceived as adequate.

**Heritage Park** (*Map 1 id 5*). Heritage Park, 5.0 acres in size, is located in the South central portion of Brillion on the corner of South Main Street and Fairway Drive and serves primarily as a neighborhood park for newly developed residential areas in the southeastern portion of the community. Open since 1976, acquisition and development of this park

began in 1973 and have depended largely on LAWCON and ORAP funds and help with a donation from the Brillion Area Jaycee's.

Facilities include four lighted tennis courts, playground equipment, a shelter building with restrooms, picnic facilities, a sand volleyball court, new playground equipment with help from the Brillion Area Jaycees, and paved parking areas. While some landscaping has been undertaken, the park retains an open character. The southern portion contains a baseball diamond with bleachers and a scoreboard.

**South Park** (*Map 1 id 8*). South Park is a small half acre tract located on the northeast corner of South Main and Horn streets. Primarily a sitting area, the site lies along Spring Creek, providing a pleasant visual greeting to visitors entering the city from the south. Development consists of a bench and a drinking fountain.

**Peters Park and Athletic Field** (*Map 1 id 7*). Peters Park and Athletic Field is a 9.0 acre parcel located on the corners of South Glenview Ave. and Tesch Street in the west central portion of Brillion adjacent to the high school football field/ track. The site contains a lighted softball diamond, used by the city, schools, and the Brillion Athletic Association. Other facilities include a concession stand with restrooms, playground equipment, scoreboard, scorer's booth, maintenance shed, and a large parking area. The parking area and concession stand also receive use during football games and major track meets. Bleachers are presently being obtained for use this season.

**Brillion Public Schools** (*Map 1 id 2*). Recreation facilities at Brillion Public Schools, located on South Main and Tesch streets, serve primarily the elementary and middle school students. Although the facilities are also used by other groups, such as the Recreation Department and the Brillion Athletic Association, the site is adjacent to Peters Athletic Field and together the two parcels serve as one of the community's athletic complex. Facilities at the school site include a lighted football field and track with a press box, two gymnasiums, playground equipment, and open play areas.

**Brillion High School** (*Map 1 id 1*). Located off of County Road HR and next to Ariens in the northwest part of the city, the high school offers 2 softball diamonds and 1 baseball diamond. There is approximately 30 acres of land that can be utilized for sporting activities. The school sits on two 40 acre parcels providing plenty of space for the growing population base. Facilities at the school include a gymnasium which is the home to many of the school's athletic programs including basketball, volleyball, track, and many sports practices.

### **Private Recreational Facilities:**

**Trinity Lutheran School** (*Map 1 id 10*). Although privately owned, the 16 acres of open area adjoining Trinity Lutheran Church is used as a neighborhood playground by children after school hours and during the summer months. Located at the intersection of East National Avenue and Round Lake Road in the southeastern portion of the city, the area

contains playground equipment, a small open play area, an indoor gymnasium, paved area marked off for various games, and two basketball hoops.

**Holy Family School** (*Map 1 id 9*). The Holy Family School playground, located on the south side of Center Street in the west central portion of Brillion, provides over one acre of open area which also serves as a neighborhood playground during non-school hours. In addition to play apparatus, the site contains a large open play area.

**Deer Run Golf Course** (*Map 1 id 4*). Deer Run Golf Course is a privately owned nine-hole course located in the extreme southern portion of the city. The course is open to the public except during special events, providing an invaluable contribution to the recreational needs of area residents.

**Future Open Space** (*Map 1 id 11*). This space is located southwest of CTH PP and south of the Fawn Ridge Subdivision. The City acquired 2.7 acres of land to be used as a future park per recommendations of the last Park and Recreation plan. Black Creek runs through the property making it an ideal setting for a park facility. This open space will support growing residents in this southern area of the City.

### **Other Recreational and Cultural Facilities:**

**Friendship State Trail.** This state-owned, multi-purpose trail connects the City with the community of Forest Junction located 6 miles west of Brillion on the City's northwest. The crushed limestone trail uses an abandoned railroad corridor that runs parallel to USH 10 from Hacker Road to Glenview Ave. In the future an extension may provide a connection to Horn Park on the City's west side. The trail is used for biking, walking, hiking, and running and also serves as a means of a safe route for students traveling to and from the high school as well as residents coming to and from work. This trail also links to the Fox River Trail north in Forest Junction and then to Green Bay.

**The Ariens Company Museum.** Established in 2003, located on Calumet Street across from City Hall, this museum takes a look at the history of the machinery produced by the Ariens Company, an established business and icon of the City of Brillion.

**Brillion Historical House/The Green Hotel.** Built in 1872 by F.F. Green, the Green Hotel was Brillion's first accommodations located on the corner Calumet and North Francis Streets. In 1966, the building was converted into the current Historical Society, exhibiting Brillion's past with a wallpaper display and historic photos. Facility tours are offered by appointment.

## **RECREATION PROGRAM**

The Brillion Park and Recreation Department and the Brillion Athletic Association (BAA) sponsor a range of recreational activities, providing organized recreational opportunities for

residents of all ages (Table 4). In addition, school events and activities are sponsored by Brillion Public Schools and the two parochial schools.

**Table 4**  
**SPONSORED RECREATIONAL PROGRAMS**

**Youth Programs:**

Arts and Craft Classes  
T-Ball (Ages 7-8)  
Little League (Ages 10-12)  
Babe Ruth (Ages 13-15)  
Girls Softball (Ages 13-15)  
Recreational League Baseball (Ages 9-12)  
Tennis Lessons  
Swimming Lessons  
Pre-School Programs  
Public Swimming  
Soccer  
Swim Team  
Charger 7-8th grade football (BAA)  
Tae Kwon Do  
Tumbling  
Trips  
Wrestling (BAA)  
Lifesaving Class

**Adult Programs:**

Arts and Craft Classes  
Learn to Swim Class  
Men's Industrial Basketball  
Co-ed Volleyball  
Tai Chi  
Water Arthritis  
Women's Volleyball  
Water Aerobics  
Zumba Dance Classes

**Other City Programs/Groups:**

The 34-acre landfill site off of Hacker Road in the northwest portion of the city has been designated for the creation of the City ATV Park. A \$26,000 grant from the Wisconsin DNR has been awarded to help in its development with support and guidance from the

Farmers ATV club. This additional acreage should help in accommodating Brillion's current and future residential growth with more recreational opportunity.

Brillion also has a NEV (new electric vehicle) ordinance for those owning golf carts making them able to be driven on city streets.

Area groups that could be of funding assistance to parks and recreation in the city:

4H

American Legion Post 126

American Legion Auxiliary

Best Friends of Calumet County

Brillion Area Jaycees

Brillion Area Chamber of Commerce

Brillion Athletic Association

Brillion City Community Drive (BCCD)

Brillion Community Services

Brillion Conservation Club

Brillion Cub Scouts & Boy Scouts

Brillion Federation of Teachers

Brillion Historical Society

Brillion Housing Authority/Retirement Homes

Brillion Lions Club

Brillion Nature Center Association, Inc.

Brillion Senior Citizens

Calumet County Flyers

Calumet County Tourism Association

Chevy Club

Deer Run Snow-Riders

Friends of the Friendship Trail

Girl Scouts of Manitou Council

Habitat for Humanity - Between the Lakes Branch

Kitchen Kut-Ups

New Day

Optimist Club

Salvation Army of Calumet County

S.H.A.R.E. (Self Help and Resource Exchange)

T.O.P.S. (Taking Off Pounds Sensibly)

Women's Club

Young American Bowling Alliance (YABA)

## **RECREATIONAL NEEDS**

Park and recreation needs may include the need for additional park land to accommodate new facilities, the need for additional parks in areas where new residential growth is occurring, or the need for new or improved park facilities and equipment. Generally, recreation standards are used to identify these needs. However, in communities the size of Brillion, more emphasis is placed on citizen input than identifying park and recreation needs.

### **PUBLIC SURVEY**

A public survey identifying some of the residential needs and wants was submitted via the City's website from September 7<sup>th</sup> to November 4<sup>th</sup>, 2011. A 98.6% completion rate was analyzed with 65 total participating. The age group of 31 to 60 years was the highest for the response rate in poll.

A quick summary from the survey showed most residents were very or somewhat satisfied (84.4%) with the parks and recreation facilities in the City of Brillion. Most residents received information about the department from the newspaper (59.7%), Program Guide (50.0%) or the City Newsletter (45.2%).

The highest visited park was Peters coming in at 79.0% with Heritage Park in second at 58.1% of residents polled. The BCC was a close third at 56.5%. Of the top 3 priorities (Q7) for parks, athletic fields, and trail maintenance, Restrooms were #1, with the Brillion Community Center #2 and Amenities (picnic tables, playgrounds, etc.) coming in as #3. Residents who filled out the survey rated the ability to walk and/or bike in and around the City good to excellent. Most would exercise more if additional routes would be provided. A 64.4% response rate showed that the City should explore bike and pedestrian trail expansion. Surprisingly, the Friendship Trail being used, at least once by citizens within the past 12 months, was at 60.9%, with 39.1% stating they don't utilize.

For detailed results of the survey see Appendix A. More information on the facility needs is addressed in the sections below.

### **LAND NEEDS**

Land demand standards of 10 acres of public owned open space for every thousand residents provides a useful barometer for determining whether a community has adequate parkland to meet the recreational needs of its residents. Based on this standard, Brillion's park and open space acreage is closely matched to its present and projected population (Table 5).



**Table 5**

**BRILLION OUTDOOR QUANTITATIVE OPEN SPACE DEMAND (ACRES)**

Year	Population	Demand (10 acres per 1,000 residents)
2000	2,937	29.37
2010	3,148	31.48
2015 proj.	3,189	31.89
2020 proj.	3,231	32.31
2025 proj.	3,315	33.15
2030 proj.	3,381	33.81

Source: Calumet County Outdoor Recreation Plan, 2010.

The current public park acreage is at 30.5 acres not including the school recreational areas or 34-acre ATV Park. According to the projections, in 2030 approximately 33.8 acres of “community/neighborhood” park space will be needed.

However, in smaller communities such as Brillion, it is not unusual that only from 12 to 20 acres' per 1,000 residents is needed to provide adequate area for all the recreational facilities desired by local residents. Taking in account the current conditions, the parks are adequate and will continue to meet the needs of the residents in the next 20 years but the location of new facilities though-out the City will be the key to providing quality options to Brillion's residents. This is prominent when looking at natural barriers and scattered residential developmental areas.

**LOCATIONAL NEEDS**

When analyzing recreational needs, the location of existing parks and how well they serve existing residential areas are also used to determine if additional park land is needed. To identify areas that are not adequately served by parks, recreation areas are typically classified as community parks, which generally have a variety of facilities and serve the entire community, and neighborhood parks, which have fewer facilities but adequately serve small neighborhoods. The classification of park types is not clear-cut in smaller communities such as Brillion. Often a single facility, particularly one designed to accommodate a specific type of active recreation, is adequate to meet local demand for that activity and is expected to serve the entire community, no matter where it is located. Heritage Park, for example, has Brillion's only tennis courts, thus serving as a community park for that activity, even though the park primarily serves as a neighborhood park for the southern portion of the city. Horn Park and Peters Athletic Field are two parks containing facilities generally associated with community parks, although each serves as a neighborhood park/playground for surrounding residents.

Ideally, each of a municipality's neighborhoods has its own park. Neighborhood boundaries are usually determined by those natural and man-made barriers which impede safe and convenient pedestrian movement between various areas in the community. In many larger communities, neighborhood boundaries coincide with the attendance area of the elementary school, which serves as a neighborhood playground. In Brillion, however, the elementary school is centrally located and South Main Street, a major collector, is crossed daily by half of the city's school aged population. Ryan Street (USH 10), therefore, can be considered as the only major barrier to free pedestrian movement in the city. At present, residents north of this highway do not have access to an existing park without crossing this busy street. A neighborhood park site is needed in this area.

As the city continues to grow and new residential areas develop, it may also be necessary to develop neighborhood park sites to conveniently serve residents. Another such area is on the City's south side in the Fawn Ridge Subdivision just south of the golf course. Once this area becomes fully developed, a neighborhood park will be needed to serve these residents. The city currently owns a 2.7 acre parcel south of the golf course along Sunset Drive that could accommodate those needs.

## **FACILITY NEEDS**

Facility needs in Brillion do not involve substantial development of major new facilities, but rather the upgrading of existing facilities or the provision of some additional facilities that are in short supply. In general, the Park and Recreation Commission has identified a number of needs which are site-specific and an additional range of facility needs which could be accommodated on existing parkland where adequate area exists. Emphasis was placed on developing facilities and programs which would expand the diversity of active recreational opportunities. Additional facilities and improvements which would enable physically challenged and elderly residents to more fully enjoy and utilize the city's park system was also recognized as a need. There is also a need to preserve the city's green areas as well as addressing parking issues at various parks. Among the needed recreational facilities identified by the committee are the following:

Basketball courts	Soccer fields	Tennis "practice board"
Volleyball courts	Horseshoe pits	Racquetball courts
Updated play equipment	Shuffleboard courts	Skate Park
Physical fitness course	Youth/Softball fields	Disc Golf Court
Baseball diamond improvements	Supplemental Lighting	Enhanced Park Signage
Multi-purpose trails	Bike routes	Sledding hill

The survey results showed that playgrounds were highest in amenities of completely meeting the needs of residents as well as the ball diamonds, concessions, outdoor tennis courts, picnic areas, park restrooms, and shelters. (See Appendix A for detailed results).

(Page left blank intentionally)

## **PLAN RECOMMENDATIONS**

The plan recommendations for the City of Brillion are intended to serve as a guide and vision for the future development of park and recreation areas in the community. They are also meant to meet the existing recreational needs of local residents. Because these needs could change, the recommendations should be reviewed on an annual basis.

### **FACILITY DEVELOPMENT**

#### **Brillion Community Center (BCC)**

- Review feasibility of the exercise/weight room. Additions such as a television hung in the corner and a water cooler should be considered.
- An additional racquetball court is desirable. 'If suitable area for the exercise/weight room cannot be found in the existing building, consideration should be given to utilizing the present racquetball court, which is non-regulation size for this facility and have two new official sized racquetball courts constructed.
- Review options for remodeling or rebuilding of the locker rooms and shower facilities.
- A loading zone should be constructed adjacent to the kitchen along the drive on the east side of the building. The bus blocks parking stalls in the front of the building where on and off loading presently occurs.
- Conditions of the two swimming pools should be addressed for better utilization in the existing aquatic programing.
- Make second floor of BCC handicapped accessible.
- Review options for new/updated lighting and carpeting as it is getting worn, especially in the lobby area.
- Consider trimming the maple tree branches to make the Community Center sign more visible to passersby, or move the sign down on the posts.
- Add or update the current bike rack.

## **Horn Park** *(See Map 2)*

- The city should continue cooperating with the Jaycees in refurbishing the pavilion.
- Consideration should be given to paving remaining portions of the park entrance and access road to provide a better surface for park users and to reduce maintenance.
- An area should be set aside for recreational volleyball.
- Remaining overhead wiring in the picnic area should be placed underground and other needed improvements should be made to the park's electrical system.
- A new roof for the shelter should be considered along with the repair of the door and faucet to the men's restroom.
- Steps should be taken to control mosquitos and other pests in the summer as this makes the park uncomfortable for visitors. (removal of pond, drainage plan)
- The city should continue its tree-planting program and maintenance. An urban forestry plan should be considered. Grant opportunities exist through the WDNR.
- Consideration should be given to developing a fitness course, which would be located primarily around the perimeter of the park. The course trail could be used as a cross-country ski trail during winter months.
- Consideration should be given to fencing the west side of the pond. A word of caution: the pond is one of the park's most attractive visual features. The benefits of providing this added protection and, in fact, how it is accomplished, must be weighed against the loss in aesthetics which will likely occur. Landscaping could accommodate. Also the installation of an aeration system in the center could help with green algae growth in the summer as well as add to aesthetic quality and attract wildlife. Another recommendation would be to remove it all together and fill to provide more recreational land.
- Steps should be taken to better accommodate elderly residents, especially in light of the large senior citizens housing development immediately south of the park. A hard-surfaced path should be considered to provide better access. Consideration should also be given to providing active recreational facilities they can use, such as horseshoe pits and shuffleboard courts, which can also be used by other residents of the community. These elderly residents may also be interested in maintaining a floral display area if room is set aside for this activity.
- The creation of a disc golf course should be considered, review feasibility of locating the holes. Money has been raised for this activity.

- An updated sign at the entrance of the park would make it more attractive as well as some landscaping and flower pots.
- The fencing along the soccer field should be maintained along the berm.
- Sandbox should be maintained to eliminate weed growth.

### **Heritage Park** *(See Map 3)*

- An area set aside for recreational volleyball should be considered.
- A paved half basketball court should be considered in proximity to the existing tennis courts.
- A "practice board" which would serve as a tennis practice area should be constructed on the back fence of one of the existing tennis courts. The location of the "practice board" should not significantly reduce visibility of the shelter by police security patrols.
- A permanent backstop, sideline fencing, and constructed infield should be considered in the southwest corner of the park to better accommodate organized youth ball programs.
- Now that the elderly housing project south of Heritage Park is completed, consideration should be given to providing facilities which can accommodate these residents, such as horseshoe pits. A fence or hedge along the south property line may also be desirable.
- An ongoing program of landscaping improvements should be continued.
- A sand box adjacent to the playground is planned to be installed in spring of 2012 per a donation from the area Jaycees. Planned maintenance should be scheduled to keep the unit free of weeds
- More parking should be considered for the park to better accommodate recreational activities.

(Page left blank intentionally)



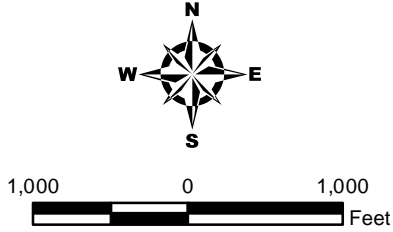


# MAP 2 EXISTING RECREATIONAL SITES City of Brillion HORN PARK

2 ft Contours  
Park Boundary



Source: Calumet County Land Information Department, 2011.  
2010 Aerial Photography.



This data was created for use by the East Central Wisconsin Regional Planning Commission Geographic Information Systems Department. Any other use application of this information is the responsibility of the user and such use application is at their own risk. East Central Wisconsin Regional Planning Commission disclaims all liability regarding fitness of the information for any use other than for East Central Wisconsin Regional Planning Commission business.

This map shows the approximate relative location of property boundaries but was not prepared by a professional land surveyor. This map is provided for informational purposes only and may not be sufficient or appropriate for legal, engineering, or surveying purposes.

Prepared By  
EAST CENTRAL WISCONSIN  
REGIONAL PLANNING COMMISSION- January, 2012



Back of Map 2

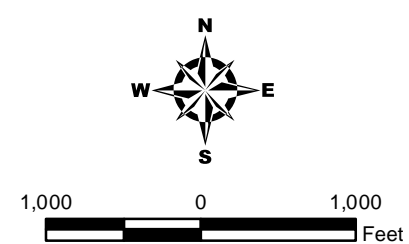


# MAP 3 EXISTING RECREATIONAL SITES City of Brillion HERITAGE PARK

2 ft Contours  
Park Boundary



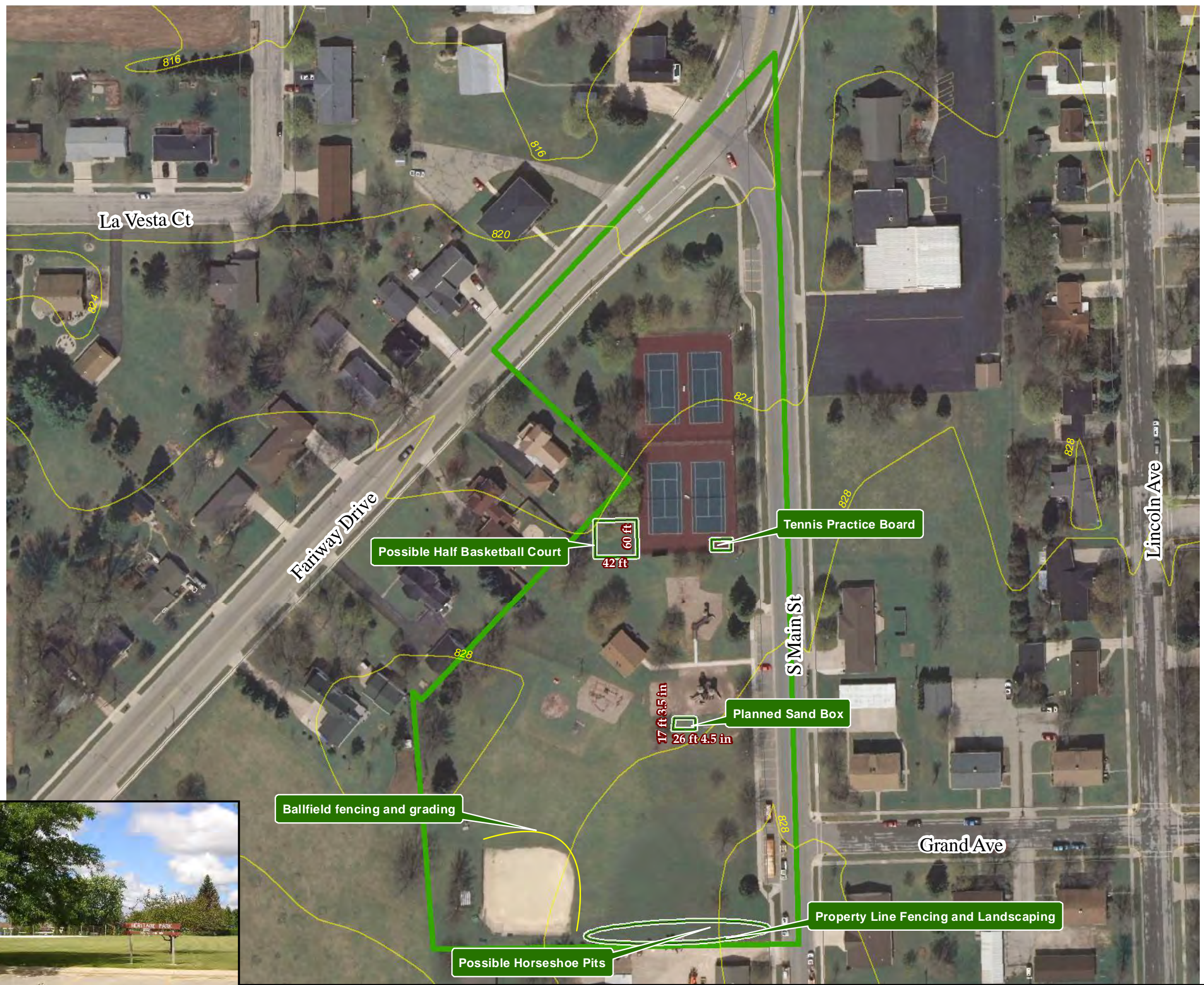
Source: Calumet County Land Information Department, 2011.



This data was created for use by the East Central Wisconsin Regional Planning Commission Geographic Information Systems Department. Any other use application of this information is the responsibility of the user and such use application is at their own risk. East Central Wisconsin Regional Planning Commission disclaims all liability regarding fitness of the information for any use other than for East Central Wisconsin Regional Planning Commission business.

This map shows the approximate relative location of property and facility boundaries but was not prepared by a professional land surveyor. This map is provided for informational purposes only and may not be sufficient or appropriate for legal, engineering, or surveying purposes.

Prepared By  
EAST CENTRAL WISCONSIN  
REGIONAL PLANNING COMMISSION- January, 2012





Back of Map 3

### **South Park**

- The existing drinking fountain needs to be replaced.
- Continue tree maintenance. Trim old and overgrown trees.
- Research landscaping ideas to make the space more attractive.
- Consideration should be given to a park sign with a possible informational gazebo type kiosk noting City events. According to the public survey, many residents were unsure of where this park even was.
- More benches could be added to overlook the bridge, stream, and Main Street.

### **Peters Park Athletic Field** *(See Map 4)*

- Continue with the current tree maintenance; add shade trees along playground and volleyball court.
- An addition of a skate park should be considered in the northeast corner of the parking lot. This would be visible from the road for safety and cut down on vandalism.
- Replace outdated playground equipment for safety issues.
- Resurfacing of the basketball court should be considered.

### **New Neighborhood Park(s)**

- Consideration should be given to acquiring and developing a two to three acre parcel as a neighborhood park to serve the residential area north of Ryan Street (USH 10).
- The City should also consider utilizing the 2.7 acres south of the Golf Course to accommodate residents of the Fawn Ridge subdivision. This area is growing rapidly so a small neighborhood park would suit the residents well and provide more recreation opportunity to the City's south side.

## **PROGRAM DEVELOPMENT**

The following needs and opportunities were identified as possible measures which could be taken to augment the present range of recreational activities available in the community:

- Interest in reestablishing a community band should be assessed. The “band shell” at Horn Park could be used for open air performances. Need to refurbish this park for more use.
- Following construction of horseshoe courts at Horn Park, interest in organizing a horseshoe pitching league should be investigated. From the survey results, 66.7% of residents utilize this service.

## **OTHER RECOMMENDATIONS**

- A close working relationship between the City of Brillion and the Brillion School District and the parochial schools is needed to maximize the recreational opportunities available to the residents of the community and to minimize duplication of programs and facilities. As one example, there may be an opportunity for using the open area on the western end of the Holy Family school site as a soccer field. Incorporating swimming into school physical education programs to increase use of the community center pool was noted earlier. It may also be possible that the school industrial arts department or other school organizations and groups could help develop certain park facilities.
- The 34-acre landfill site in the northwest portion of the city has been designated as the City ATV Park. A \$26,000 grant from the Wisconsin DNR has been awarded to help in its development with support and guidance from the ATV club. This additional acreage should help in accommodating Brillion’s current residents with more recreational opportunity.
- The City should consider appropriating funds for undertaking a relatively consistent annual capital improvement program (CIP). This would ensure that parks and park facilities are not allowed to deteriorate to a point where major expenditures are simultaneously incurred. As part of this policy, Brillion should continue its efforts to seek available funding grants through the DNR’s Stewardship funds as a means of maximizing its local park and recreation expenditures where available.
- The present ownership of the abandoned railroad right-of-way between Brillion and Reedsville is still in question. The City of Brillion should continue to investigate this parcel to determine if it is still relatively intact and if it can be purchased for use as a multi-purpose trail. Such a trail would provide recreational opportunities for bicycling, hiking, nature study, horseback riding and snowmobiling. If this parcel is

acquired, consideration should be given to developing support facilities such as parking, restrooms, and picnic facilities.

- Two new holes are currently in the works of being developed south of Ridgeway Drive for the golf course to accommodate the storm water management project that the City is initiating along Black Creek to help with flooding issues.

### **Open Space Conservancy Areas:**

- The city should attempt to preserve floodplains, shorelands, and other environmental areas as designated conservancy areas. Preserved in their natural state, these areas can become important amenities for newly developing residential areas, particularly if they are integrated into a public trail network.
- The City should look into conducting a city-wide tree inventory with help from the County's Forester to help develop a tree master plan.

### **Trail Recommendations:** *(See Map 5 for proposed routes.)*

- An off-road trail connection along CTH PP to Fawn Ridge Subdivision should be considered not only if a new park area is developed but also as a safe route to school zone for students.\*
- Consideration should also be taken for the development of an off-road trail along CTH PP to the Brillion Nature Center.\*
- The City should consider the development of a paved trail on the south side of East National Ave to accommodate Trinity Lutheran School offering a safe route for students to get to school.\*
- Brillion should explore the possibility of a bike lane along Glenview Avenue, passing Peter's Athletic Park and joining up with the Friendship Trail to the north.
- The development of a separate Bicycle and Pedestrian plan for the City should be considered and would be deemed a great tool and amendment to the Open Space Plan.
- A trail connection is currently being planned along S National Ave. to accommodate Trinity Lutheran School as the road is quite busy when school is in session.

*\*Recommendations taken from the City of Brillion's Safe Routes to School plan, 2009.*

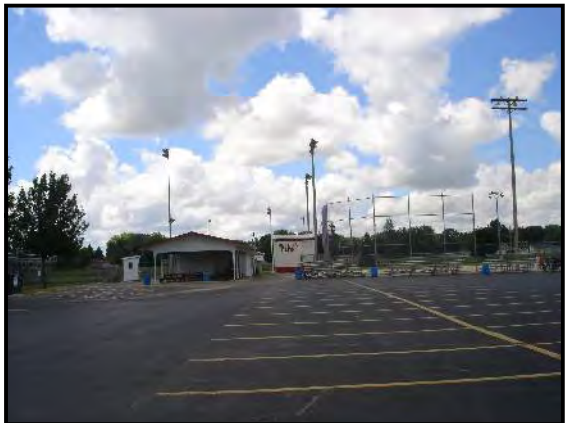
(Page left blank intentionally)



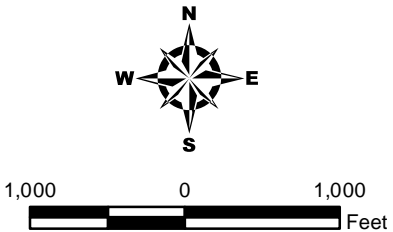


# MAP 4 EXISTING RECREATIONAL SITES City of Brillion PETERS ATHLETIC PARK

- 2 ft Contours
- Proposed Trail Connection
- Park Boundary
- School Athletic Fields



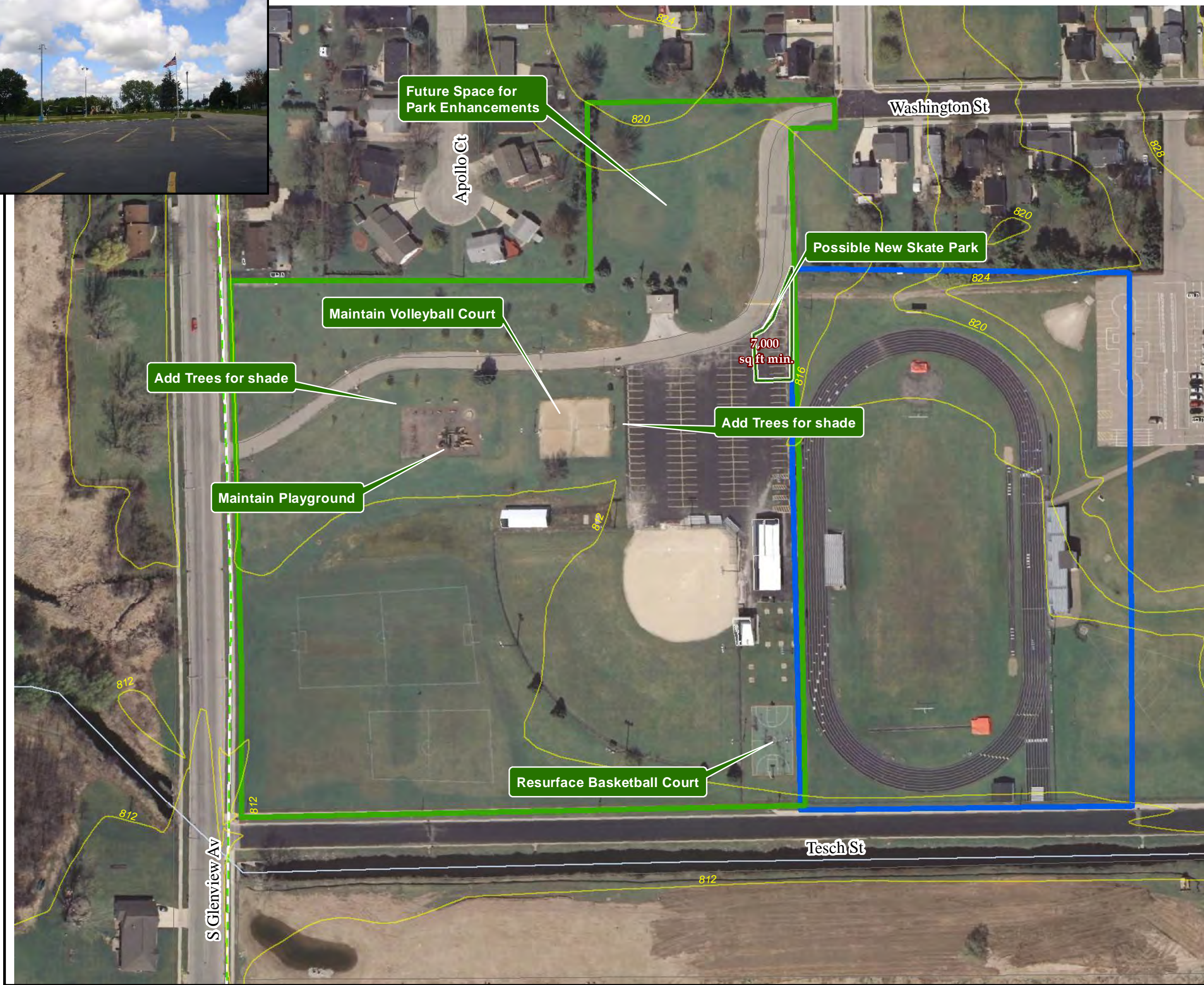
Source: Calumet County Land Information Department, 2011.



This data was created for use by the East Central Wisconsin Regional Planning Commission Geographic Information Systems Department. Any other use application of this information is the responsibility of the user and such use application is at their own risk. East Central Wisconsin Regional Planning Commission disclaims all liability regarding fitness of the information for any use other than for East Central Wisconsin Regional Planning Commission business.

This map shows the approximate relative location of property boundaries but was not prepared by a professional land surveyor. This map is provided for informational purposes only and may not be sufficient or appropriate for legal, engineering, or surveying purposes.

Prepared By  
EAST CENTRAL WISCONSIN  
REGIONAL PLANNING COMMISSION- January, 2012





Back of Map 4



# Trail Routes Existing and Proposed City of Brillion

- 1 Brillion High School
- 2 Brillion Middle and Elementary School
- 3 Community Center
- 4 Deer Run Golf Course
- 5 Heritage Park
- 6 Horn Park
- 7 Peters Park
- 8 South Park
- 9 Holy Family School
- 10 Trinity Lutheran School
- 11 Future Open Space 2.7 Acres

This data was created for use by the East Central Wisconsin Regional Planning Commission Geographic Information Systems Department. Any other use application of this information is the responsibility of the user and such use application is at their own risk. East Central Wisconsin Regional Planning Commission disclaims all liability regarding fitness of the information for any use other than for East Central Wisconsin Regional Planning Commission business.

This map shows the approximate relative location of property boundaries but was not prepared by a professional land surveyor. This map is provided for informational purposes only and may not be sufficient or appropriate for legal, engineering, or surveying purposes.

Prepared By  
EAST CENTRAL WISCONSIN  
REGIONAL PLANNING COMMISSION- January, 2012



Back of Map 5

## ACTION PROGRAM

An action program, based on the preceding plan recommendations, was drafted by the Brillion Plan Commission and the Park and Recreation Commission. The proposed program includes development priorities for the five-year period from 2012 to 2016, identifying facility priorities by committee member in the following categories of: (L = Low, M = Medium, H = High). The committee, by consensus, developed an action program that emphasizes further development and improvements of existing parks in the city through the priority ratings list. Subtotals for each facility are listed by year and are to be used as a guide. Funds may or may not exist for that year. The City should review the plan on an annual basis to see what funding is available.

Many facilities and improvements can be accomplished by city forces, community service organizations, or perhaps in cooperation with high school groups, thus reducing actual costs. Another consideration is that cost-sharing funds from such sources as the DNR's Stewardship program are not guaranteed. The City of Brillion must compete for these funds with other eligible local units of government in Wisconsin.

The action program proposed for the next five years is indeed ambitious (most priorities listed occur in 2012-2013). However, with a cooperative approach between the city, the Brillion Athletic Association, the School District, and other local service organizations, Brillion should make significant strides improving its park and recreation system during the next five years.

## FIVE YEAR ACTION PLAN 2012 - 2016

High (H), Medium (M), and Low (L) – Priorities

<i>H= High M= Medium L = Low</i>		<b>2012</b>	<b>2013</b>	<b>2014</b>	<b>2015</b>	<b>2016</b>	<b>Amenity</b>
<b>BRILLION COMMUNITY CENTER (BCC)</b>							
Remodeling of Locker rooms		H	H	M	H	H	4H, 1M
Television and wall bracket		H	L	L	L	L	1H, 4L
Water Cooler		L	L	M	L	L	1M, 4L
New Carpeting/lighting		M	M	M	M	M	5M
ADA Accessible – elevator		L	M	M	L	M	3M, 2L
Construct racquetball courts (2)		M	M	M	M	M	5M
Construct loading zone		L	L	L	L	M	1M, 4L
Update bike racks		L	L	L	L	L	5L
<i>Subtotal of Priorities by Year:</i>		<i>2H, 2M, 3L</i>	<i>1H, 3M, 4L</i>	<i>5M, 3L</i>	<i>1H, 2M, 5L</i>	<i>1H, 4M, 3L</i>	

<i>H= High M= Medium L = Low</i>		<b>2012</b>	<b>2013</b>	<b>2014</b>	<b>2015</b>	<b>2016</b>	<b>Amenity</b>
<b>HERITAGE PARK</b>							
Grade for volleyball court		M	M	M	M	M	5M
Basketball court		M	M	H	M	M	1H, 4M
Tennis practice board		M	L	M	M	M	4M, 1L
Ballfield fencing and grading		M	M	L	M	M	4M, 1L
Horseshoe pits		L	M	L	L	L	1M, 4L
Property line fence		M	M	M	H	L	1H, 3M, 1L
Landscaping program		L	L	L	M	M	2M, 3L
<i>Subtotal of Priorities by Year:</i>		<i>5M, 2L</i>	<i>5M, 2L</i>	<i>1H, 3M, 3L</i>	<i>1H, 5M, 1L</i>	<i>5M, 2L</i>	
<b>HORN PARK</b>							
Renovate Pavilion		M	L	L	M	M	3M,2L
Grade for volleyball court		L	L	L	L	L	5L
Upgrade electrical system		M	M	M	M	M	5M
Tree planting and maintenance program		H	L	M	M	M	1H,3M, 1L
Install pond aeration system or fill pond in with soil		L	L	M	M	L	2M,3L
Construct fitness course		M	M	M	M	M	5M
Mosquito control / fogging		M	M	M	M	M	5M
Fencing along pond		M	L	M	L	L	2M, 3L
Horseshoe courts		L	L	L	L	L	5L
Shuffleboard courts		L	L	L	L	L	5L
Update Sign		M	M	M	H	M	1H, 4M
Landscaping program		L	L	L	L	L	5L
<i>Subtotal of Priorities:</i>		<i>1H,,6M, 5L</i>	<i>4M,8L</i>	<i>7M,5L</i>	<i>1H,6M 3L</i>	<i>6M,6L</i>	
<b>PETERS PARK ATHLETIC FIELD</b>							
Maintain Playground		H	H	M	M	M	2H, 3M
Resurface Basketball Court		H	M	H	H	H	4H, 1M
Maintain Volleyball Court		M	M	M	M	M	5M
Skate Park		L	L	L	M	M	2M, 3L
Tree Maintenance and Planting Program		L	M	M	M	M	4M, 1L
<i>Subtotal of Priorities by Year:</i>		<i>2H, 1M, 2L</i>	<i>1H, 3M, 1L</i>	<i>1H, 3M, 1L</i>	<i>1H, 4M</i>	<i>1H, 4M</i>	
<b>SOUTH PARK</b>							
Replace drinking fountain		L	H	L	L	L	1H, 4L
Information sign and kiosk		L	M	M	L	L	2M, 3L

<i>H= High M= Medium L = Low</i>		<b>2012</b>	<b>2013</b>	<b>2014</b>	<b>2015</b>	<b>2016</b>	<b>Amenity</b>
Additional Benches		L	M	L	M	M	3M, 2L
Tree program		L	L	L	L	L	5L
<i>Subtotal of Priorities by Year:</i>		4L	1H, 2M, 1L	1M, 3L	1M, 3L	1M, 3L	
<b>NEW NEIGHBORHOOD PARK 1</b>							
<b>North of Ryan Street</b>							
Land acquisition (2-3 acres)		L	L	H	M	L	1H, 1M 3L
Picnic facilities		L	L	L	M	L	1M, 4L
Play apparatus		L	L	L	M	L	1M, 4L
<i>Subtotal of Priorities by Year:</i>		3L	3L	1H, 2L	3M	3L	
<b>NEW NEIGHBORHOOD PARK</b>							
<b>FAWN RIDGE SUBDIVISION 2.7A</b>							
Picnic facilities		L	L	M	L	L	1M, 4L
Play apparatus		L	L	L	L	L	5L
<i>Subtotal of Priorities by Year:</i>		2L	2L	1M, 1L	2L	2L	
<b>TRAIL DEVELOPMENT</b>							
<b>FAWN RIDGE SUBDIVISION</b>							
Trail connection along CTH PP		H	H	M	M	M	2H, 3M
<i>Subtotal of Priorities by Year:</i>		1H	1H	1M	1M	1M	
<b>TOTAL PRIORITIES for City* - SUMMARY BY YEAR:</b>		<b>6H, 14M, 21L</b>	<b>4H,17M 17L</b>	<b>3H,21M, 18L</b>	<b>4H, 22M,14L</b>	<b>2H, 21M,16L</b>	

\*Many upgrades to the amenities called for a medium to high range from the years 2012-2014, with a medium to low range in 2015 and 2016. Upgrades and development of facilities is dependent upon City population growth. The committee's responses were rounded up where a tie of priority occurred. The highest amenity priority was given to Peter's Park in maintaining the playground and resurfacing the basketball court.

**RESOLUTION NO. RE12-04**

**A RESOLUTION ON THE ADOPTION OF THE CITY OF BRILLION 5 YEAR  
COMPREHENSIVE PARK AND OUTDOOR RECREATION PLAN  
IN THE CITY OF BRILLION, WISCONSIN**

**WHEREAS**, the City of Brillion has requested the development of a community –wide comprehensive park and outdoor recreation plan, and

**WHEREAS**, the City of Brillion Park and Recreation Commission and the City Plan Commission have obtained technical assistance from the East Central Wisconsin Regional Planning Commission to prepare the City's 5 Year Comprehensive Park And Outdoor Recreation Plan, and

**WHEREAS**, the City of Brillion 5 Year Comprehensive Park And Outdoor Recreation Plan encompasses a general outline and plan for the recreational development of Brillion's Park System until the year 2016, and

**WHEREAS**, adoption of said plan is required for the City of Brillion to become eligible for cost sharing aid programs from the State of Wisconsin Department of Natural Resources and other State Agencies, now therefore,

**BE IT RESOLVED** by the City of Brillion Common Council that the City of Brillion 5 Year Comprehensive Park And Outdoor Recreation Plan be adopted as the approved recreation plan for the City of Brillion, Wisconsin.

Resolution No. RE12-04 introduced and its adoption moved by Alderperson Van Frachen. Second by Alderperson Edinger.

Upon a poll vote thereon, the results were as follows:

7 votes cast  
7 votes yes  
0 votes no

The Mayor declared this Resolution adopted, approved and signed this 23<sup>rd</sup> day of April, 2012.

  
Gary Deiter  
Mayor

Attested:   
Lori M. Gosz  
City Administrator/Clerk-Treasurer

## **APPENDICES**









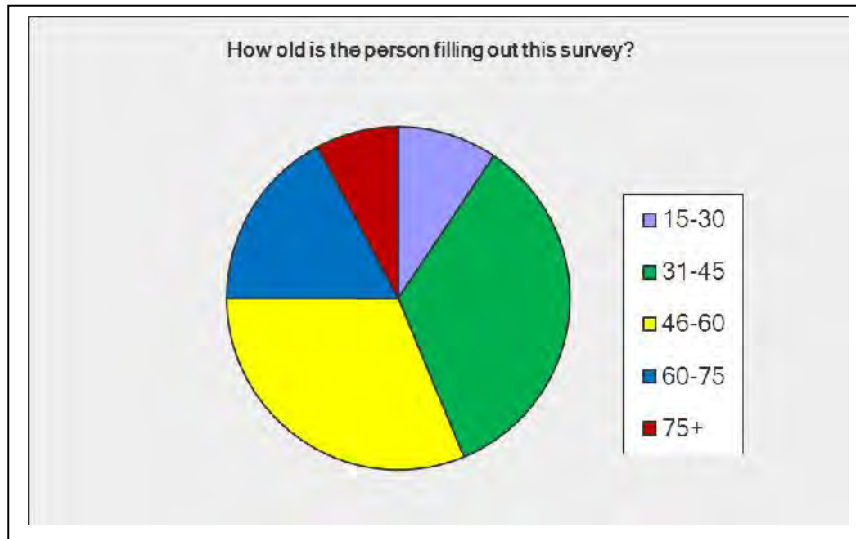
# *2011 Park and Rec Survey Results*

Survey conducted online at [www.surveymonkey.com](http://www.surveymonkey.com)  
Wednesday, September 7th, 2011 – Friday, November 4<sup>th</sup>, 2011

<b>Total Started Survey:</b>	<b>65</b>
<b>Total Completed Survey:</b>	<b>64</b>
	<b>(98.5% completion rate)</b>

**1. How old is the person filling out this survey?**

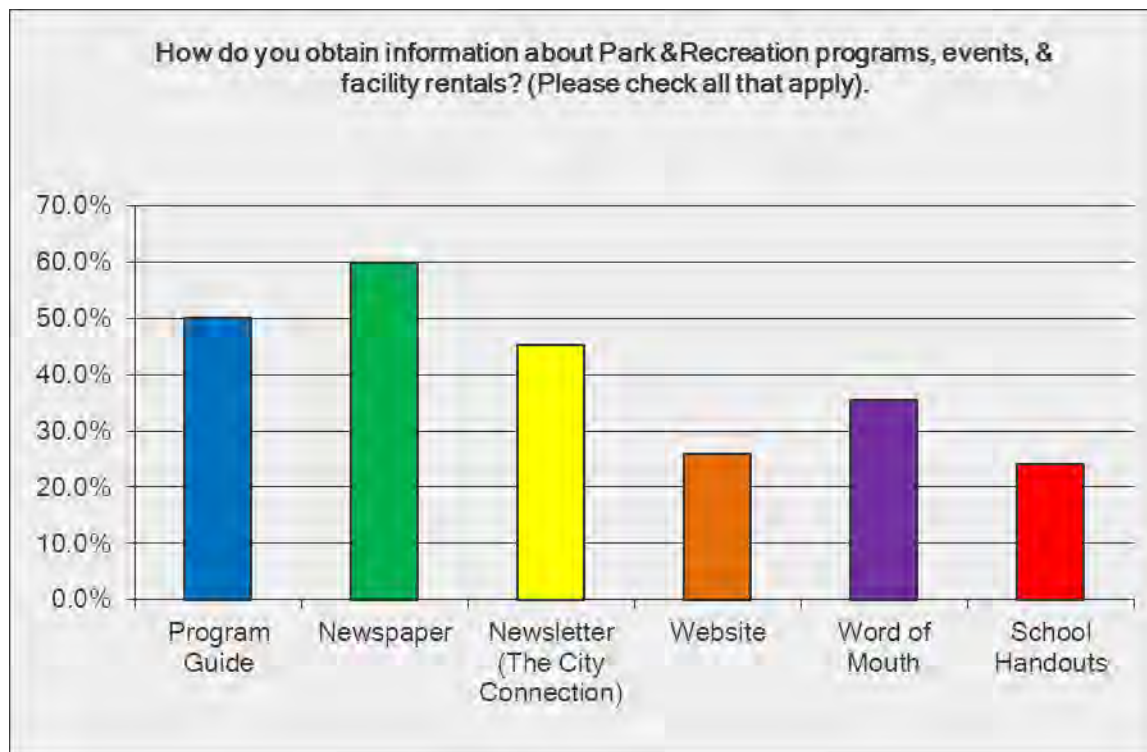
Answer Options	Response Percent	Response Count
15-30	9.4%	6
31-45	34.4%	22
46-60	31.3%	20
60-75	17.2%	11
75+	7.8%	5
<i>answered question</i>		<b>64</b>
<i>skipped question</i>		<b>1</b>



**2. How do you obtain information about Park & Recreation programs, events, & facility rentals? (Please check all that apply).**

Answer Options	Response Percent	Response Count
Program Guide	50.0%	31
Newspaper	59.7%	37
Newsletter (The City Connection)	45.2%	28
Website	25.8%	16
Word of Mouth	35.5%	22
School Handouts	24.2%	15
Other (please specify)		6
<i>answered question</i>		<b>62</b>
<i>skipped question</i>		<b>3</b>

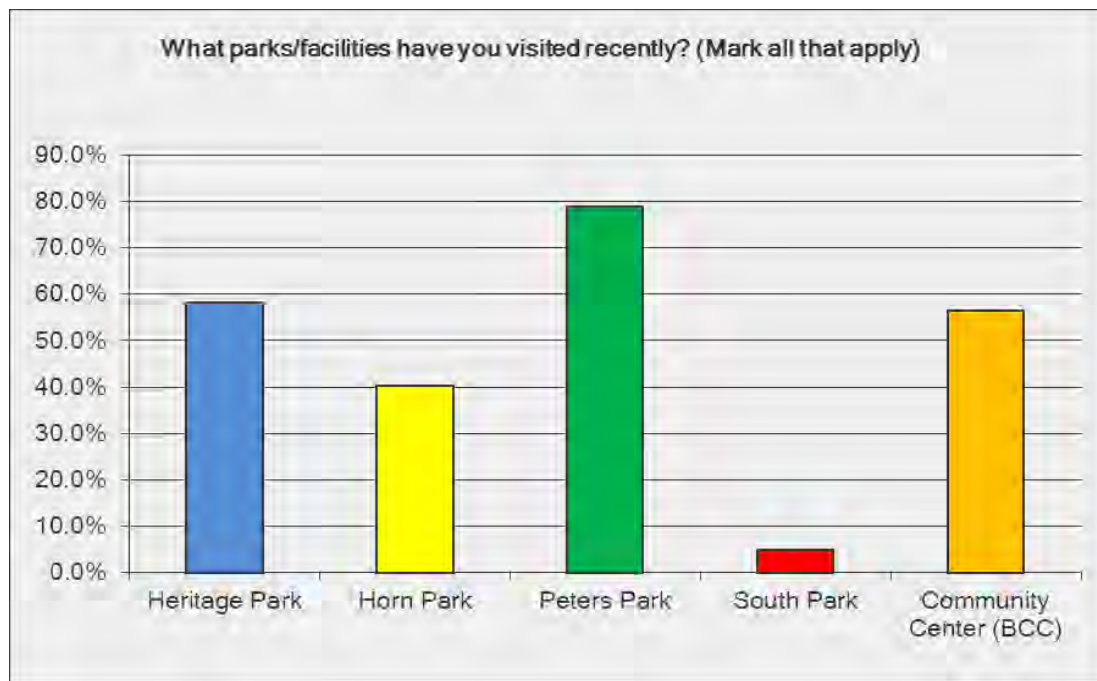
Number	Response Date	Other (please specify)	Categories
1	Nov 30, 2011 7:58 PM	At Calumet Co. Bank	
2	Nov 18, 2011 8:47 PM	BCC	
3	Nov 18, 2011 5:44 PM	The Calumet Co Bank	
4	Nov 18, 2011 5:38 PM	www.activityreg.com	
5	Nov 15, 2011 7:43 PM	Library Handouts	
6	Oct 15, 2011 8:05 PM	Signs around town	



### 3. What parks/facilities have you visited recently? (Mark all that apply)

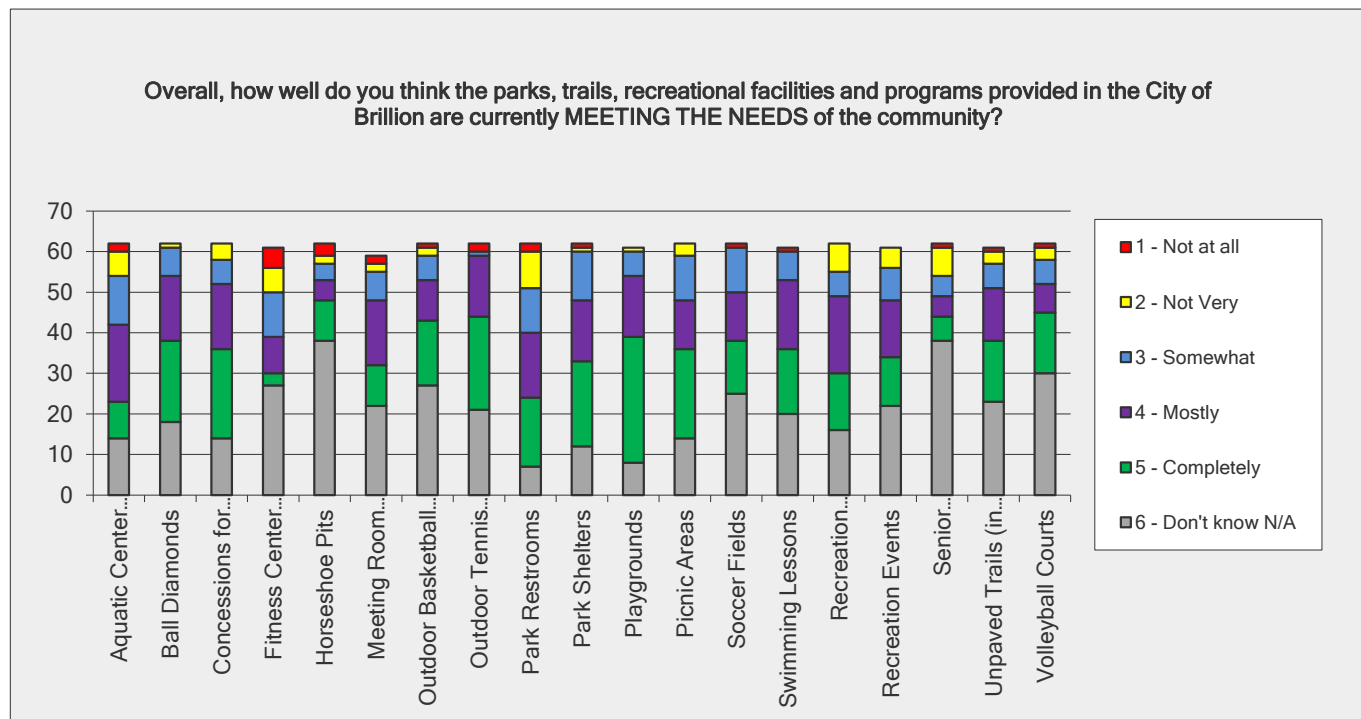
Answer Options	Response Percent	Response Count
Heritage Park	58.1%	36
Horn Park	40.3%	25
Peters Park	79.0%	49
South Park	4.8%	3
Community Center (BCC)	56.5%	35
Other (please specify)		2
<b>answered question</b>		<b>62</b>
<b>skipped question</b>		<b>3</b>

Number	Response Date	Other (please specify)	Categories
1	Nov 30, 2011 7:50 PM	Where is South Park?	
2	Nov 3, 2011 12:49 AM	Holy Family Playground	



**4. Overall, how well do you think the parks, trails, recreational facilities and programs provided in the City of Brillion are currently MEETING THE NEEDS of the community?**

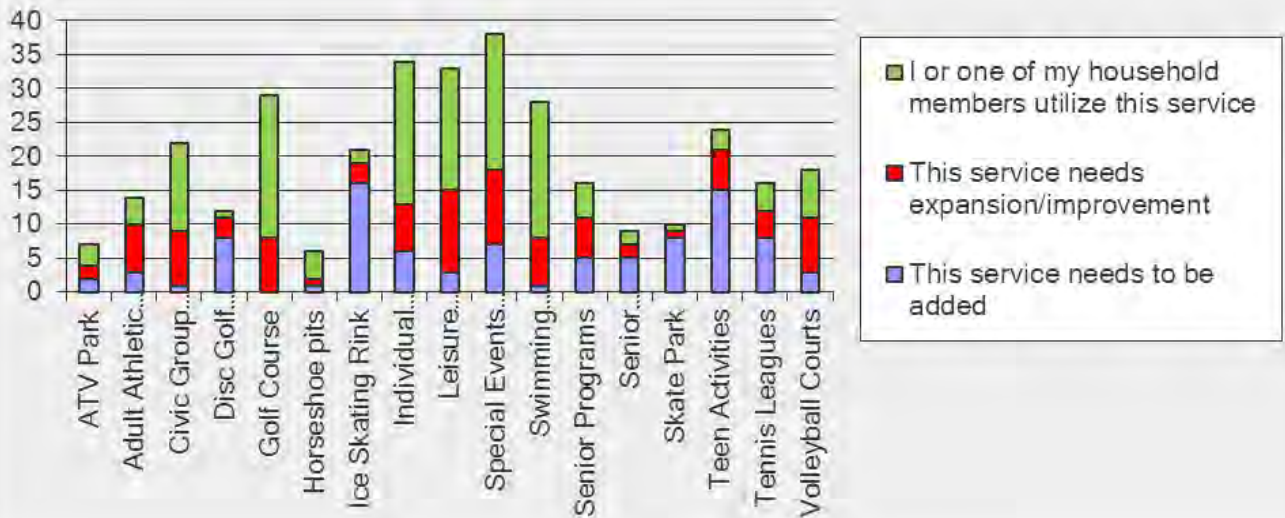
Answer Options	1 - Not at all	2 - Not Very	3 - Somewhat	4 - Mostly	5 - Completely	6 - Don't know N/A	Response Count
Aquatic Center (facility only)	2	6	12	19	9	14	62
Ball Diamonds	0	1	7	16	20	18	62
Concessions for events	0	4	6	16	22	14	62
Fitness Center (BCC)	5	6	11	9	3	27	61
Horseshoe Pits	3	2	4	5	10	38	62
Meeting Room Availability (BCC)	2	2	7	16	10	22	59
Outdoor Basketball Courts	1	2	6	10	16	27	62
Outdoor Tennis Courts	2	0	1	15	23	21	62
Park Restrooms	2	9	11	16	17	7	62
Park Shelters	1	1	12	15	21	12	62
Playgrounds	0	1	6	15	31	8	61
Picnic Areas	0	3	11	12	22	14	62
Soccer Fields	1	0	11	12	13	25	62
Swimming Lessons	1	0	7	17	16	20	61
Recreation Programs	0	7	6	19	14	16	62
Recreation Events	0	5	8	14	12	22	61
Senior Programming	1	7	5	5	6	38	62
Unpaved Trails (in natural areas)	1	3	6	13	15	23	61
Volleyball Courts	1	3	6	7	15	30	62
<i>answered question</i>							<b>62</b>
<i>skipped question</i>							<b>3</b>



**5. Please let us know if you or one of your family members participated in the following activities and if there is a need for expansion, improvement or additions. (Mark all that apply).**

Answer Options	I or one of my household members utilize this service	This service needs expansion/improvement	This service needs to be added	Response Count
ATV Park	3	2	2	7
Adult Athletic Leagues	4	7	3	13
Civic Group activities (Lion's, Jaycees, etc.)	13	8	1	19
Disc Golf Course (Horn Park)	1	3	8	11
Golf Course	21	8	0	24
Horseshoe pits	4	1	1	6
Ice Skating Rink	2	3	16	20
Individual Activities (biking, hiking, etc.)	21	7	6	31
Leisure Swimming	18	12	3	29
Special Events (concerts, brat fry's, etc.)	20	11	7	36
Swimming Lessons	20	7	1	25
Senior Programs	5	6	5	15
Senior Transportation	2	2	5	9
Skate Park	1	1	8	10
Teen Activities	3	6	15	24
Tennis Leagues	4	4	8	13
Volleyball Courts	7	8	3	16
<b>answered question</b>				<b>54</b>
<b>skipped question</b>				<b>11</b>

Please let us know if you or one of your family members participated in the following activities and if there is a need for expansion, improvement or additions. (Mark all that apply).



#### 6. What is your overall satisfaction with the condition of the parks you visit?

Answer Options	Response Percent	Response Count
Very Satisfied	43.8%	28
Somewhat Satisfied	40.6%	26
Somewhat Dissatisfied	12.5%	8
Conditions Unacceptable	0.0%	0
Don't Visit	3.1%	2
Other (please specify)		8
<b>answered question</b>		<b>64</b>
<b>skipped question</b>		<b>1</b>

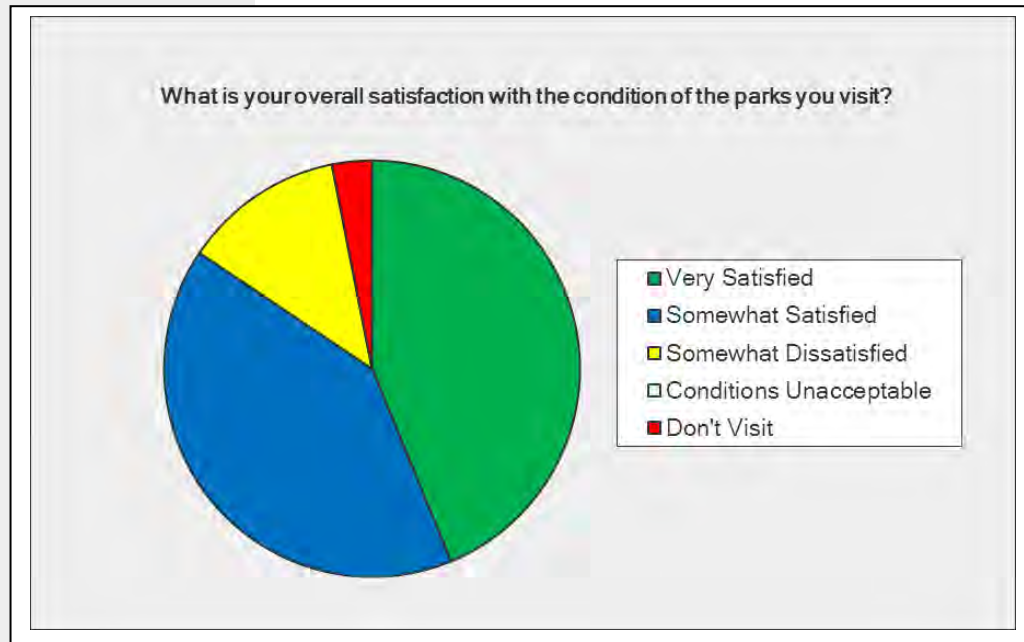
Numb	Response Date	Other (please specify)	Categories
1	Nov 30, 2011 8:49 PM	Restrooms are awful	
2	Nov 30, 2011 8:06 PM	Horn Park playground equipment needs to be replaced	
3	Nov 30, 2011 8:01 PM	Would like to see Horn Park better utilized	
4	Nov 30, 2011 7:51 PM	Restrooms are awful	
5	Nov 15, 2011 8:08 PM	The best park is VERY underutilized.	
6	Nov 15, 2011 7:49 PM	Bathrooms need cleaning and paper supplies	



7

Oct 22, 2011 4:51 PM

Horn Park is getting run down. Does anyone use South Park?  
Just wish that Horn Park would be paid more attention to it's sad how that park has gone downhill. Beautiful park got nice shelter and all and never seems to get use anymore.

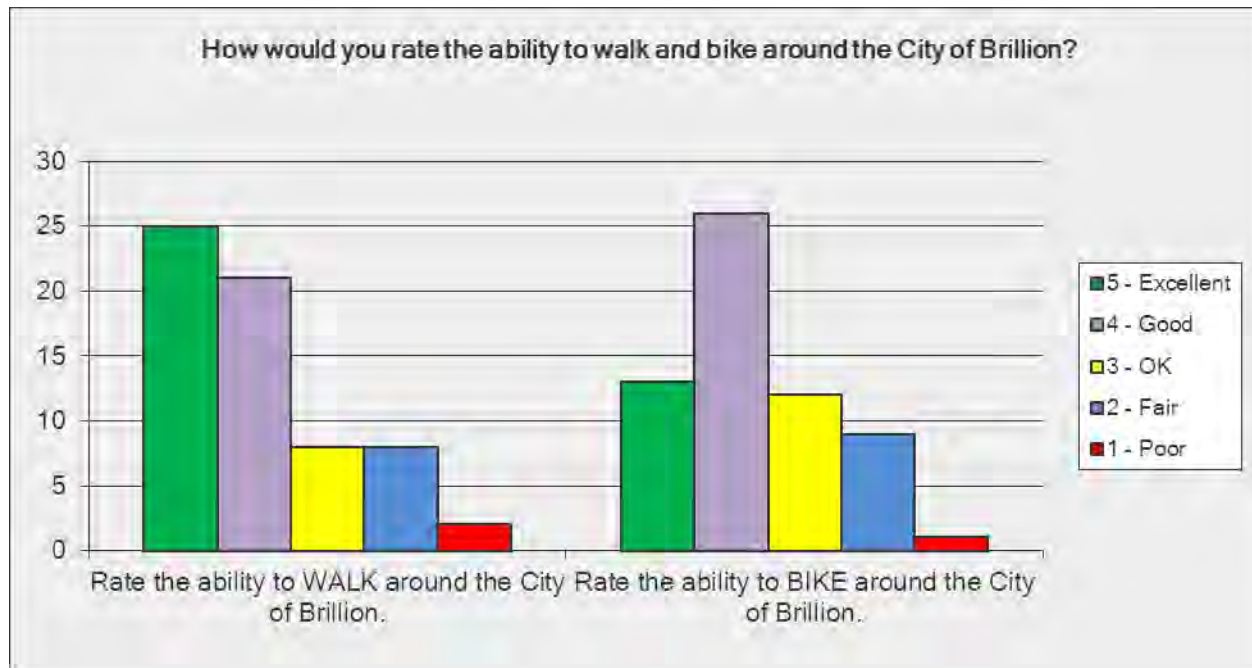


**7. Please choose your top 3 priorities for park, athletic field, and trail maintenance. (Please mark only 3)**

Answer Options	Response Percent	Response Count
Amenities Maintenance (picnic tables, playgrounds, etc.)	42.9%	27
Facility Maintenance (BCC, pool)	54.0%	34
Facility Maintenance (park shelters, etc.)	34.9%	22
Restroom Maintenance	66.7%	42
Trash Pickup and Removal	33.3%	21
Trail Maintenance (snow removal, surface repair, etc.)	12.7%	8
Tree Care (pruning, replacing, etc.)	9.5%	6
Turf Care (mowing, fertilizing, watering, field prep., etc.)	30.2%	19
<b>answered question</b>		<b>63</b>
<b>skipped question</b>		<b>2</b>

### 8. How would you rate the ability to walk and bike around the City of Brillion?

Answer Options	1 - Poor	2 - Fair	3 - OK	4 - Good	5 - Excellent	Response Count
Rate the ability to WALK around the City of Brillion.	2	8	8	21	25	64
Rate the ability to BIKE around the City of Brillion.	1	9	12	26	13	61
<i>answered question</i>						<b>64</b>
<i>skipped question</i>						<b>1</b>

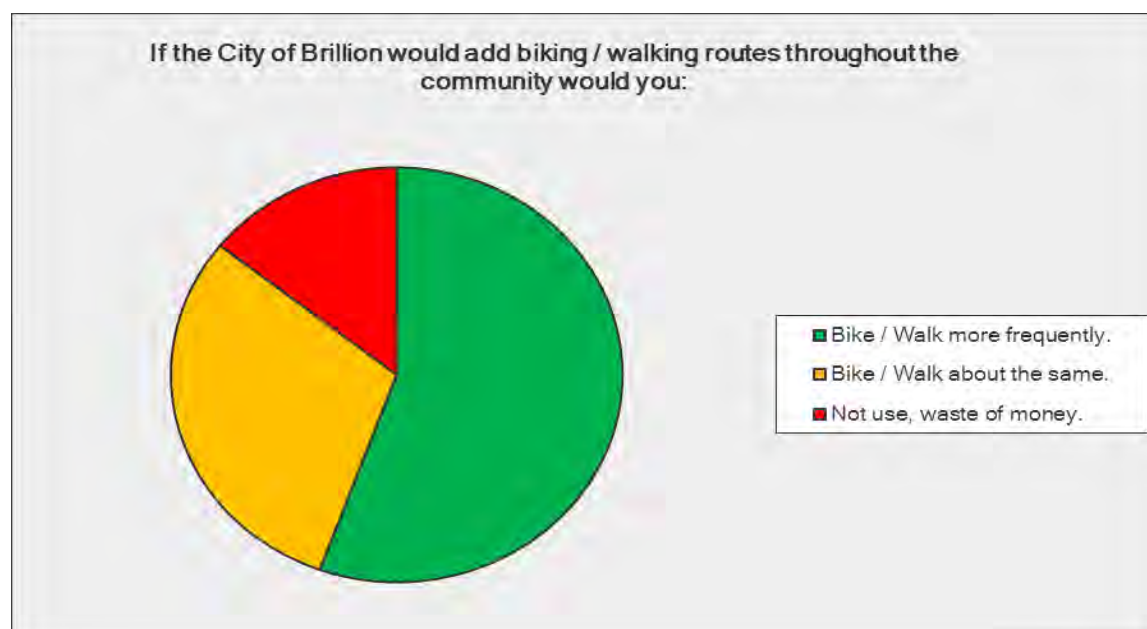


### 9. If the City of Brillion would add biking / walking routes throughout the community would you:

Answer Options	Response Percent	Response Count
Bike / Walk more frequently.	55.6%	35
Bike / Walk about the same.	30.2%	19
Not use, waste of money.	14.3%	9
Comments?		11
<i>answered question</i>		<b>63</b>
<i>skipped question</i>		<b>2</b>

Number	Response Date	Comments?	Categories
1	Nov 30, 2011 9:04 PM	Need a path to Ridgeway Drive.	
2	Nov 30, 2011 8:56 PM	Not needed, with extra expense.	
3	Nov 18, 2011 5:36 PM	Need a paved trail to the high school and light's on the trail.	
4	Nov 15, 2011 7:55 PM	There needs to be a sidewalk from Mobil to the High School.	

5	Nov 15, 2011 7:52 PM	A trail is needed to Fawn Ridge Subdivision.
6	Nov 15, 2011 7:49 PM	Snow removal poor on crosswalk approaches.
7	Nov 15, 2011 7:44 PM	We need somewhere we can live with children.
8	Nov 15, 2011 7:24 PM	I walk a lot but would bike more.
9	Oct 22, 2011 4:51 PM	I would utilize the bike/walk trail more if it was paved. It is in rough condition most of the time.
10	Oct 21, 2011 1:50 PM	A trail is very popular in many communities and Brillion is not taking advantage of this.
11	Oct 18, 2011 2:08 PM	Pave the current bike trail



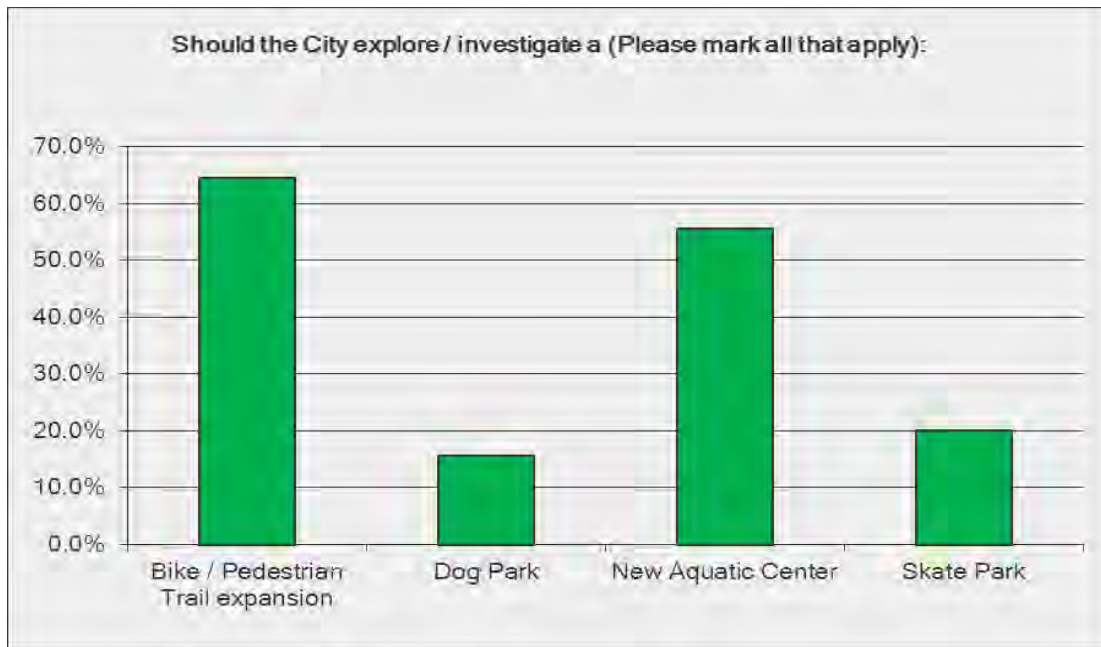
10. In the past 12 months, how often have you or one of your family members used the County Friendship trail for walking or biking?		
Answer Options	Response Percent	Response Count
0 times	39.1%	25
1-3 times	23.4%	15
4-9 times	15.6%	10
10 or more	21.9%	14
<i>answered question</i>		<b>64</b>
<i>skipped question</i>		<b>1</b>



11. Should the City explore / investigate a (Please mark all that apply):

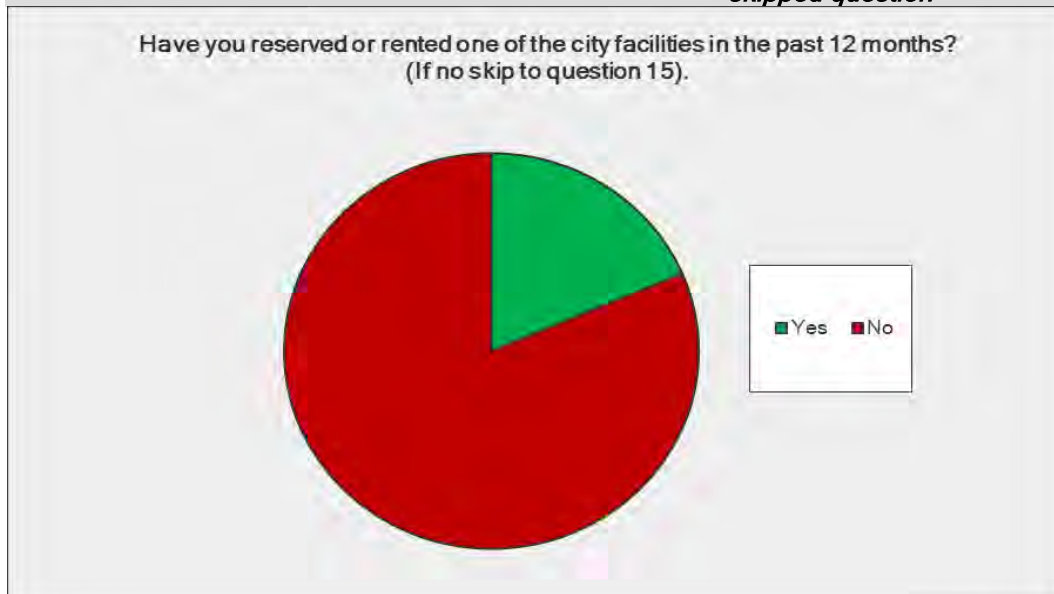
Answer Options	Response Percent	Response Count
Bike / Pedestrian Trail expansion	64.4%	29
Dog Park	15.6%	7
New Aquatic Center	55.6%	25
Skate Park	20.0%	9
Other (please specify)		6
<i>answered question</i>		<b>45</b>
<i>skipped question</i>		<b>20</b>

Number	Response Date	Other (please specify)	Categories
1	Nov 30, 2011 9:13 PM	Keep BCC	
2	Nov 30, 2011 8:19 PM	2 real racquet ball courts!	
3	Nov 30, 2011 7:51 PM	Maintain what you have first.	
4	Nov 15, 2011 8:13 PM	Disc Golf at Horn Park	
5	Oct 18, 2011 2:08 PM	I would like to see this done by the private section, not the city.	
6	Oct 15, 2011 8:07 PM	More adult sports	



12. Have you reserved or rented one of the city facilities in the past 12 months? (If no skip to question 15).

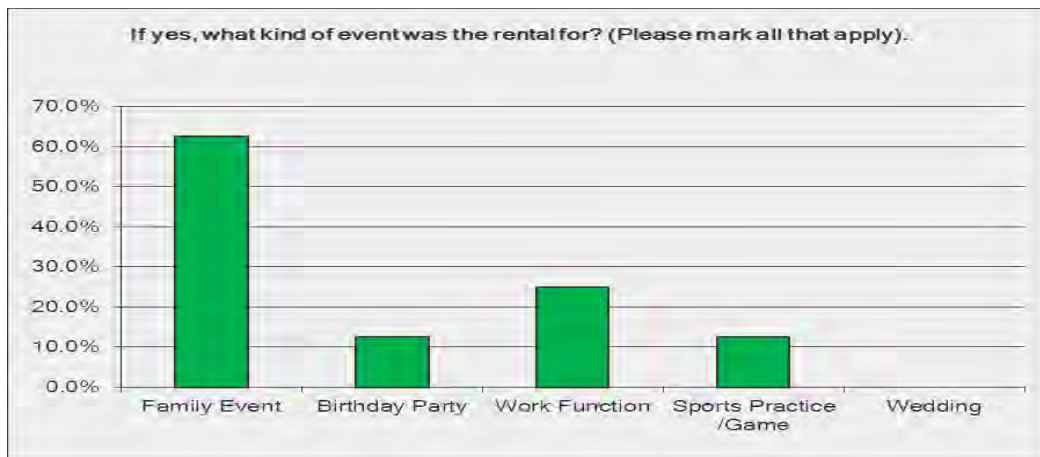
Answer Options	Response Percent	Response Count
Yes	18.6%	11
No	81.4%	48
<i>answered question</i>		<b>59</b>
<i>skipped question</i>		<b>6</b>



13. If yes, what kind of event was the rental for? (Please mark all that applies).

Answer Options	Response Percent	Response Count
Family Event	62.5%	5
Birthday Party	12.5%	1
Work Function	25.0%	2
Sports Practice /Game	12.5%	1
Wedding	0.0%	0
Other (please specify)		4
<i>answered question</i>		8
<i>skipped question</i>		57

Number	Response Date	Other (please specify)	Categories
1	Nov 15, 2011 7:55 PM	x didn't specify	
2	Nov 15, 2011 7:49 PM	Reunion	
3	Nov 15, 2011 7:27 PM	Graduation Party	
4	Nov 3, 2011 12:51 AM	Graduation Party	

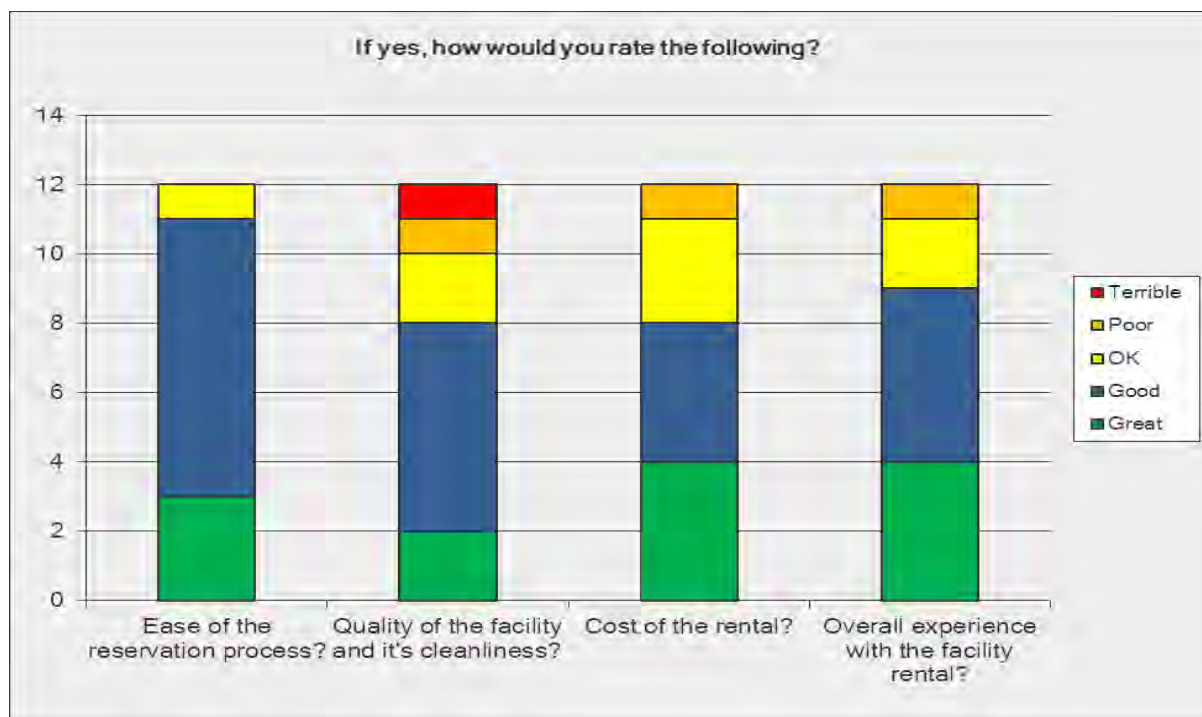


14. If yes, how would you rate the following?

Answer Options	Terr ible	Poor	OK	Good	Great	Response Count
Ease of the reservation process?	0	0	1	8	3	12
Quality of the facility and its cleanliness?	1	1	2	6	2	12
Cost of the rental?	0	1	3	4	4	12
Overall experience with the facility rental?	0	1	2	5	4	12
If it was not up to your standards, what can we do to enhance your experience?						3
<i>answered question</i>						12
<i>skipped question</i>						53



Number	Response Date	If it was not up to your standards, what can we do to enhance your experience?	Categories
1	Nov 30, 2011 9:16 PM	Lower the cost of out of town rentals	
2	Nov 30, 2011 9:11 PM	The balcony at the BCC in swim area needs cleaning.	
3	Nov 15, 2011 7:49 PM	Ceiling tiles need replacing; tables and chairs were in bad condition.	



15. Please provide any other comments to help us improve the parks and recreational services for the City of Brillion.

Answer Options	Response Count
	27
<i>answered question</i>	27
<i>skipped question</i>	38

Number	Response Date	Response Text	Categories
1	Nov 30, 2011 9:16 PM	Redo the BCC pool - put the money into the BCC and more people would use it!	
2	Nov 30, 2011 9:00 PM	People need to talk to the employees of the City, not just the City Hall employees. Everyone. Library, BCC Staff, Park & Rec., Police, & City Hall.	
3	Nov 30, 2011 8:56 PM	We have nice things they need to be maintained and programs explained better. Story in paper from those who use the programs.	
4	Nov 30, 2011 8:52 PM	Close the BCC completely and use the money for city repairs and up keep.	
5	Nov 30, 2011 8:25 PM	I do believe the BCC is a great asset to the community but needs more routine upkeep and improvements. An annual budget item for this purpose needs to be established. In question #5, golf course was mentioned. I just want to say don't let it get ruined and closed down! It is a beautiful course and Brillion would be nothing without it. Same goes for the BCC. Without those 2 places, Brillion has nothing!	
6	Nov 30, 2011 8:19 PM	What events has the City hosted in the Horn Park amphitheater? Last time I was there it was filthy and nobody would want to use it. So much of what is in Brillion is old and outdated. Fresh new items might invite more people to use the facilities. How can you call South Park a park when there is nothing there? There is no sign to designate it as a park. I had to ask where it was and I've lived in Brillion 26 years! Could there be benches, landscaping and trash barrels?	
7	Nov 30, 2011 8:06 PM	Work with current BCC facilities - give a facelift would be cheaper than building new. My family and I have always appreciated the family focus Brillion provides. Swimming lessons at the BCC, sports and recreation programs and great parks. I would hate to see the BCC close when it provides so much for the community!!!	
8	Nov 30, 2011 8:01 PM		
9	Nov 30, 2011 7:51 PM	Keep up maintenance on playground equipment and restrooms.	
10	Nov 30, 2011 7:44 PM	Put fish in the pond at Horn and let people fish there. Make Horn park a place to go camping for families. Offer tennis leagues for adults. Offer music events again at Horn or any other park. Update playground at Horn Park, very old and not very safe. Advertise to get people to come to Brillion to play and relax, advertise new changes and things to do in Brillion. Offer Seniors things to do at the parks. Put in a miniature bowling and roller skating venue in the old J&C building. Promote a kite day in a park. (family fun) Organize a kickball league like Reedsville does. Offer badminton at the BCC during the winter season. Put in a mini golf course somewhere in the city.	
11	Nov 30, 2011 5:58 PM	The pool offers year-around access to exercise opportunities. Vital to health of all ages.	
12	Nov 30, 2011 5:55 PM	Keep the pool open.	
13	Nov 30, 2011 5:53 PM	There used to be ball games @ Peter's Park every night of the week - what happened? Potter has more going on than Brillion! Athletic Association is way too expensive with their concessions! Have some items for children that are 25cents, 50cents not all \$1.00! Heritage Park is our favorite. Nice playground equipment, benches for watching the children play and we've even packed a lunch and taken the grandkids there for a picnic.	
14	Nov 18, 2011 5:50 PM	Please keep the Community Center running!	



15	Nov 18, 2011 5:40 PM	Despite the fact that it would cost money. I would love to see the pool be turned into a small aquatic center that could generate income and promote visiting in the Brillion Community. I am a Brillion resident who ends up frequenting the Manitowoc or New Holstein facilities.
16	Nov 18, 2011 5:36 PM	Sidewalks need to be added.
17	Nov 18, 2011 5:32 PM	Because of our age, someone younger would do you better filling out your survey.
18	Nov 15, 2011 8:11 PM	I do not feel a new aquatic center is necessary. Bike/path Friendship Trail could use some limestone screenings.
19	Nov 15, 2011 8:08 PM	The City shouldn't finance or flip the bill for a new skate park, dog park, trail, or aquatic center. Explore other options.
20	Nov 15, 2011 7:40 PM	Paved Friendship Trail
21	Nov 15, 2011 7:36 PM	We currently set up our own tennis leagues. This could be added by the city if there was enough support.
22	Nov 15, 2011 7:33 PM	Keep up the Community Center swimming and exercise programs.
23	Nov 15, 2011 7:24 PM	Would like to keep some type of swim lessons in the area if cost effective. Friendship trail would be more user friendly if it was paved. I know the snowmobilers use it in winter, but can they go along side?  I think Horn Park is highly underutilized, yes it is in a remote location, but it has so much space and services to offer.
24	Oct 22, 2011 4:51 PM	Also, really miss the "Christmas in the Park", too bad some vandals have to ruin it for the whole city. This was always a neat thing to do during the holidays, would love to see this back.
25	Oct 22, 2011 11:57 AM	We are fortunate to have the opportunity in Brillion to send our children to swim lessons, Have a building to rent for lock-ins and the amenities of the parks. Two of the parks are safe and updated with playground equipment. We are also fortunate to have the summer recreation programs for our children to enjoy together and this brings the community out together as well. We spend most of our time in our children's activities not leaving time to enjoy some of the adult activities that are offered to the community. The city should look at running the BCC to an up to par standard or close it. The facility's condition is poor and needs many updates, i.e.-fitness center (one that is worth going to), More availability of open swim, true racquetball court, nice meeting rooms (projector, seating etc.). With today's economic conditions the BCC is no longer a "nice to have", It is a burden and embarrassing
26	Oct 21, 2011 1:50 PM	to walk into due to the conditions being poor. I just wish that Horn Park would get a little sprucing up and playground attention. It used to be a beautiful park and still is in my opinion and you got great shelter facilities there that don't seem to see a lot of use anymore. I think adding some new equipment and sprucing it up a bit would be nice to see. Having more events maybe held there once and awhile would be nice too. Maybe that's where u could have a dog park or something like that too.
27	Oct 13, 2011 11:33 PM	

**APPENDIX B – Parks Inventory Table**



