

2021 STATE OF THE SYSTEM REPORT

APPLETON (FOX CITIES) TRANSPORTATION MANAGEMENT AREA



Approved April 29, 2022



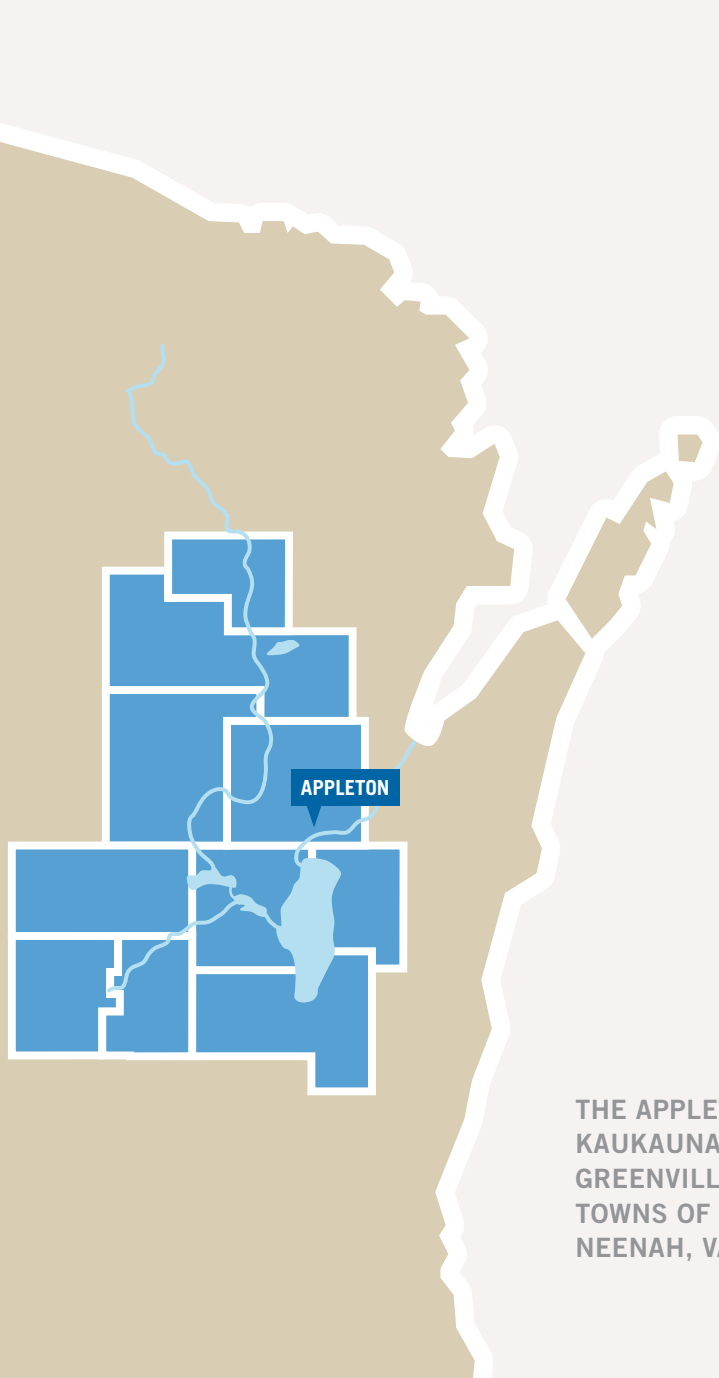
The Appleton (Fox Cities) Transportation Management Area will have a safe, efficient, and effective transportation network which provides options for the mobility needs of all people, goods, and services, while maximizing available resources, such as land, energy, and finances.

-Appleton (Fox Cities) TMA Vision

Fox Cities Trestle - Friendship Trail



TABLE OF CONTENTS



- 6 Purpose & Background
- 7 Transportation System Map

OVERVIEW OF THE MPO

- 9 Land Use & Population
Employment
- 10 Housing & Income
Commuting

PERFORMANCE MEASURES

- 12 Roadways
- 14 Transit
- 16 Bicycle & Pedestrian Network
- 18 Safe Routes to School
- 20 Airports
- 22 Freight

THE APPLETON (FOX CITIES) TMA INCLUDES ALL OR PORTIONS OF THE CITIES OF APPLETON, KAUKAUNA, MENASHA, AND NEENAH, THE VILLAGES OF COMBINED LOCKS, FOX CROSSING, GREENVILLE, HARRISON, KIMBERLY, LITTLE CHUTE, SHERWOOD, AND WRIGHTSTOWN, AND THE TOWNS OF BUCHANAN, CLAYTON, CENTER, ELLINGTON, FREEDOM, GRAND CHUTE, KAUKAUNA, NEENAH, VANDENBROEK, VINLAND, AND WOODVILLE.

PURPOSE & BACKGROUND

The purpose of the annual State of the System Report is to evaluate the status of the Appleton (Fox Cities) Transportation Management Area (TMA) transportation system and track the progress of defined performance measures through datasets and maps. The report will assist the TMA in general transportation planning.

FAST Act & BIL

A series of national transportation performance measures and goals were established in 2015 by the U.S. Department of Transportation under the Fixing America’s Surface Transportation (FAST) Act. The FAST Act authorized federal funding for highway, motor vehicle, motor carrier, and hazardous materials safety; public transportation; rail; and research, technology, and statistics programs. It also continued the metropolitan planning program. The Bipartisan Infrastructure Law (BIL) was signed into law on November 15, 2021, authorizing federal transportation funding through fiscal year 2026.

Additional performance measures were established by the Wisconsin Department of Transportation (WisDOT) and the East Central Wisconsin Regional Planning Commission (ECWRPC) to monitor conditions of the transportation system on a local scale. Six components of the Appleton (Fox Cities) TMA transportation system will be monitored throughout this report: roadways, transit, the bicycle and pedestrian network, the Safe Routes to School program, airports, and freight.

MPO & TMA Structure

A Metropolitan Planning Organization (MPO) is the policy board of an organization created and designated to carry out the metropolitan transportation planning process. MPOs are required to represent localities in all urbanized areas with populations over 50,000, as determined by the U.S. Census. An urbanized area with a population over 200,000, as defined by the Bureau of the Census and designated by the Secretary of the U.S. Department of Transportation, is called a Transportation Management Area. In 2010, the population of the Appleton (Fox Cities) TMA was 234,000.

The Appleton (Fox Cities) TMA is comprised of local and regional transportation professionals and elected officials. The TMA consists of two committees: the Transportation Committee (Policy Board) and a Technical Advisory Committee (TAC). Both the Transportation Committee and the TAC direct and monitor transportation plans with guidance from TMA staff at the East Central Wisconsin Regional Planning Commission.

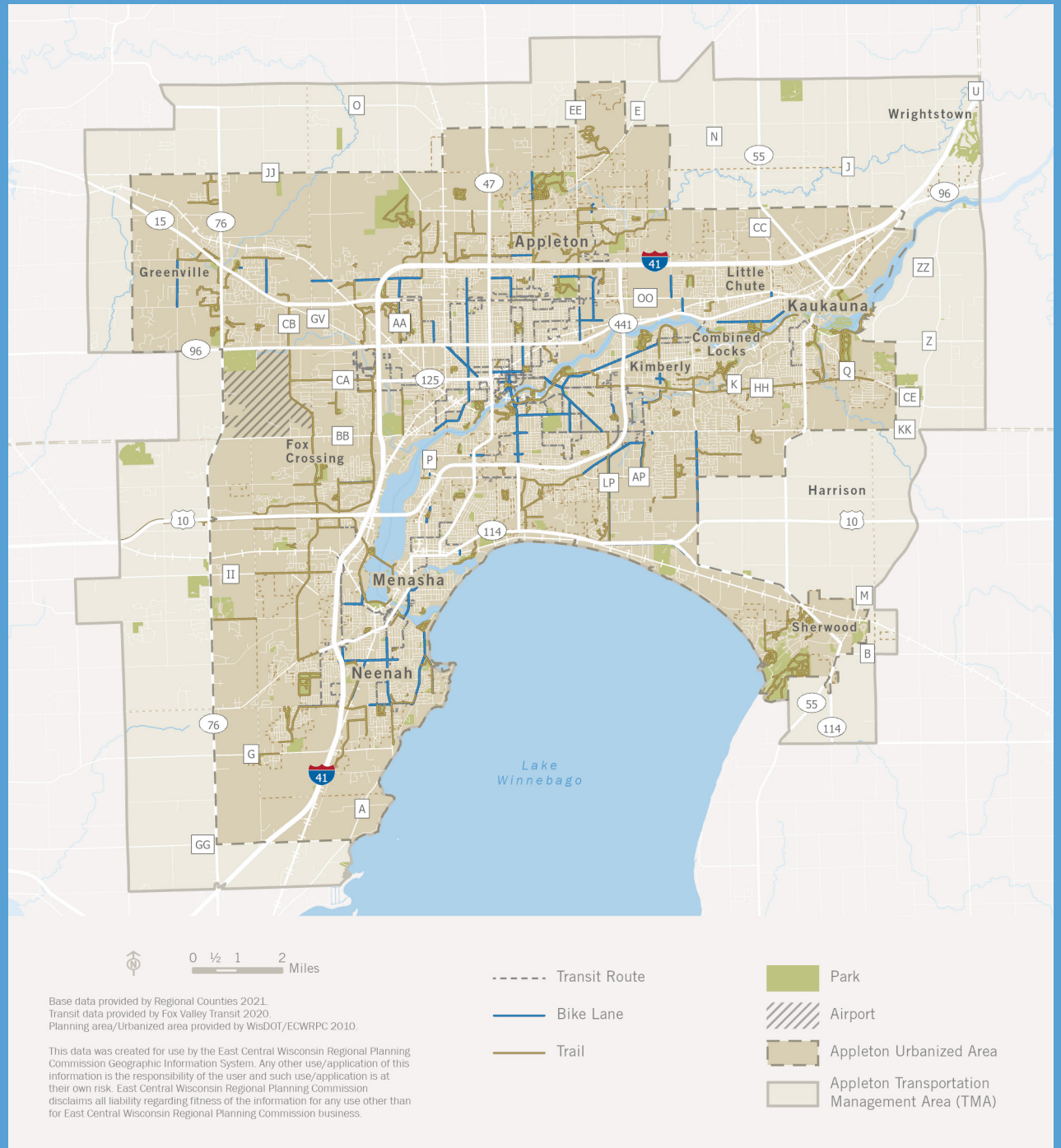
COVID-19

The COVID-19 pandemic continues to impact how people travel, commute, and engage in recreational activities like walking or biking. The goal of this report is to evaluate the status of the Appleton (Fox Cities) TMA transportation system as of 2021, but please note that data gathered prior to the COVID-19 pandemic may not reflect current transportation trends.

NATIONAL TRANSPORTATION PERFORMANCE MANAGEMENT GOALS

SAFETY	To achieve a significant reduction in traffic fatalities and serious injuries on all public roads.
INFRASTRUCTURE CONDITION	To maintain the highway infrastructure asset system in a state of good repair.
CONGESTION REDUCTION	To achieve a significant reduction in congestion on the National Highway System.
SYSTEM RELIABILITY	To improve the efficiency of the surface transportation system.
FREIGHT MOVEMENT & ECONOMIC VITALITY	To improve the national freight network, strengthen the ability of rural communities to access national and international trade markets, and support regional economic development.
ENVIRONMENTAL SUSTAINABILITY	To enhance the performance of the transportation system while protecting and enhancing the natural environment.
REDUCED PROJECT DELIVERY DELAYS	To reduce project costs, promote jobs and the economy, and expedite the movement of people and goods by accelerating project completion through eliminating delays in the project development and delivery process, including reducing regulatory burdens and improving agencies' work practices.

APPLETON (FOX CITIES) TMA TRANSPORTATION SYSTEM



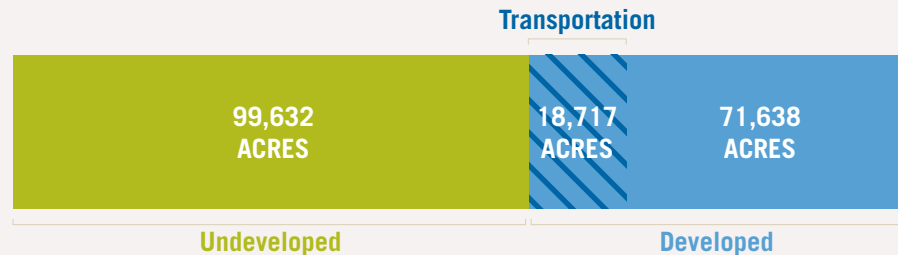


OVERVIEW OF THE TMA

LAND USE & POPULATION

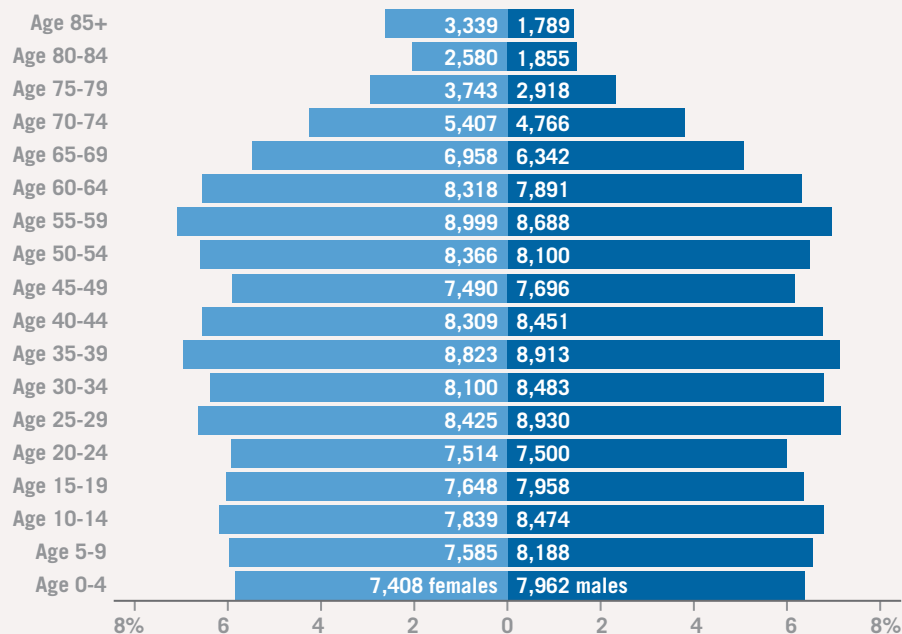
The Appleton (Fox Cities) TMA includes portions of Calumet, Outagamie, and Winnebago counties. The current population within the TMA planning boundary is 251,755. By 2040, the Wisconsin Department of Administration predicts the population of the tri-county region to climb by 40,000 people. Visit this link for more TMA data: https://www.ecwrpc.org/maps/AppletonTMA_2021.html.

Existing Land Use



Source: ECWRPC 2018

Population by Age

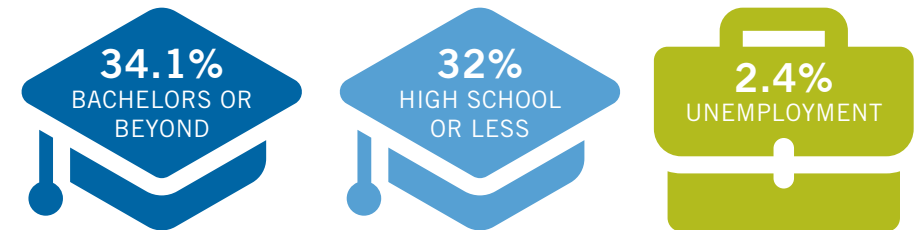


Source: ESRI Business Analyst 2021

EMPLOYMENT

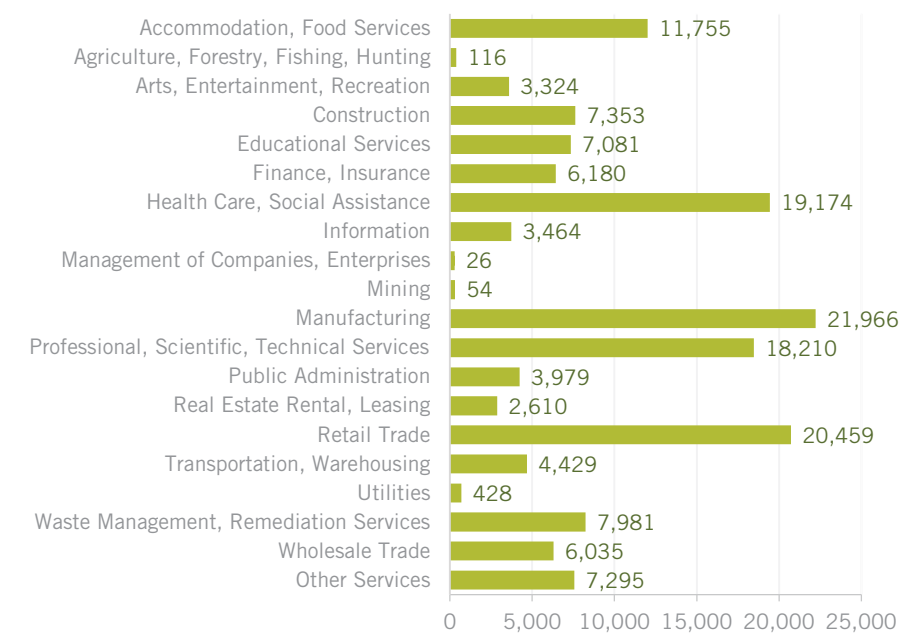
The Appleton (Fox Cities) TMA's vibrant business community is made up of 8,705 businesses with 149,184 total employees. The largest industries are manufacturing, health care and social assistance, and retail trade. There are also four college-level campuses within the TMA: Lawrence University, Fox Valley Technical College, Concordia University, and UW Oshkosh at Fox Cities.

Employment Quick Facts



Source: ESRI Business Analyst 2021

Number of Employees by Industry Sector



Source: ESRI Business Analyst 2021

HOUSING & INCOME

There are an estimated 102,501 households in the Appleton (Fox Cities) TMA planning area, with an average household size of 2.42 people. The Wisconsin Department of Administration predicts that household growth within the TMA will be significant, adding about 22,000 households from 2020 to 2040. In total, 7,808 households receive food stamps and 29,235 receive social security income.

Housing & Income Quick Facts



102,501
TOTAL
HOUSEHOLDS



\$186,755
MEDIAN HOME
VALUE



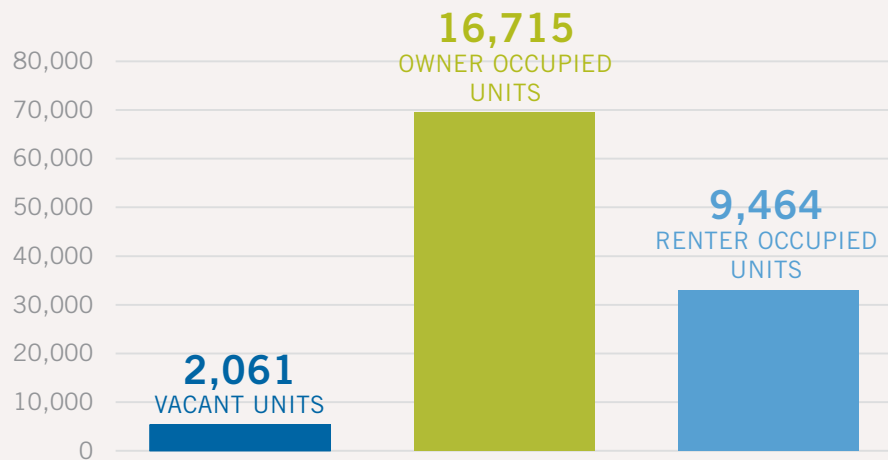
\$63,971
MEDIAN
HOUSEHOLD
INCOME



\$156,294
MEDIAN NET
WORTH

Source: ESRI Business Analyst 2021

Housing Occupancy Estimates

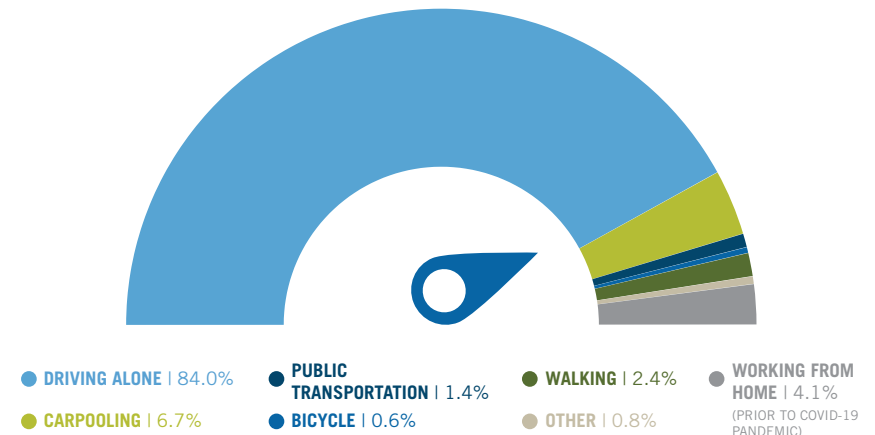


Source: ESRI Business Analyst 2021

COMMUTING

There are approximately 129,485 people commuting within the Appleton (Fox Cities) TMA. In 2019, 38% of people commuted to work in less than 15 minutes, 46% commuted in 15-30 minutes, and 16% commuted in over 30 minutes. While 85% of commuters rely on a personal vehicle to drive to work, it should be noted that 4.3% of households do not have access to a vehicle.

Means of Transportation to Work



Source: ACS 2019 5-year estimates

Vehicle Availability



Source: ACS 2019 5-year estimates

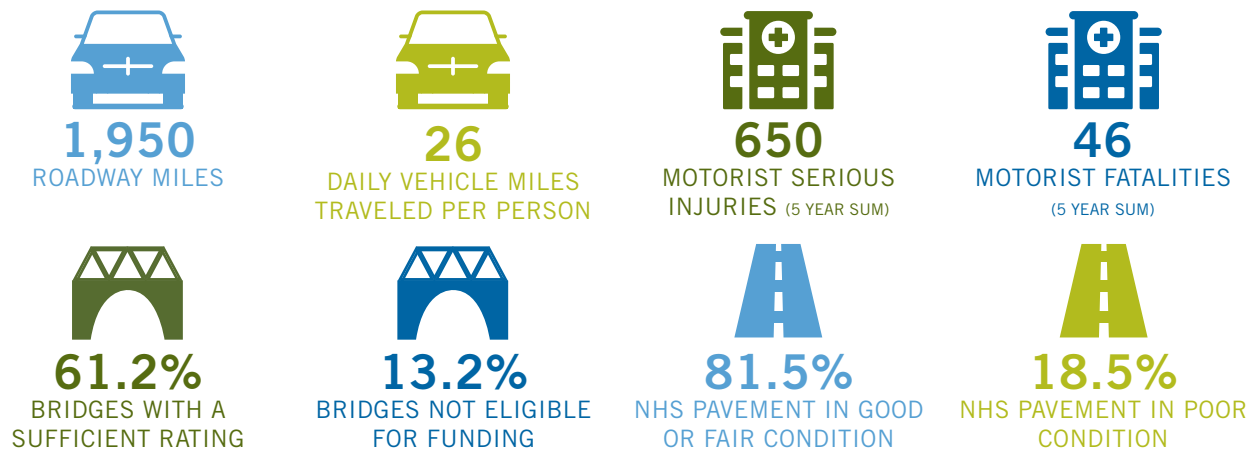


PERFORMANCE MEASURES

ROADWAYS

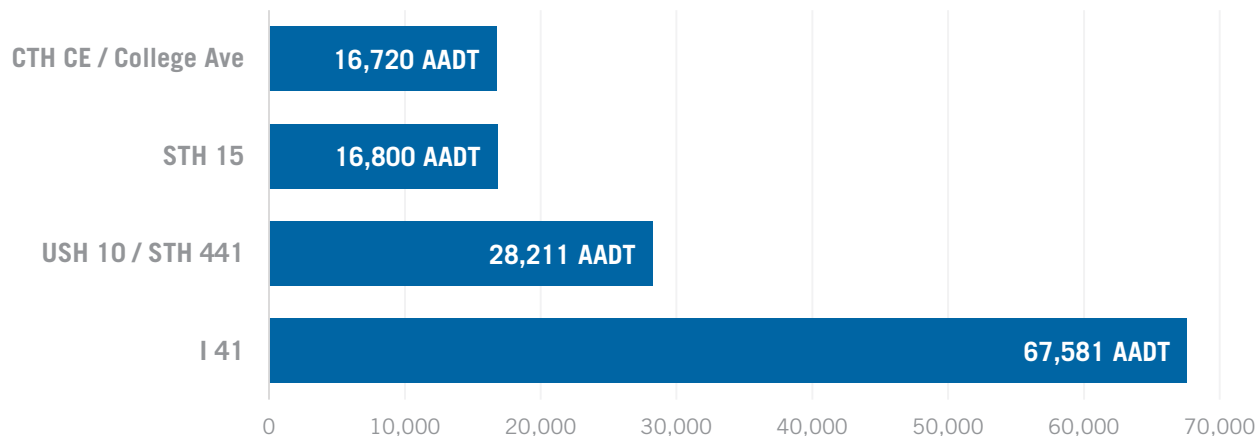
Drivers within the Appleton (Fox Cities) TMA have access to 1,950 total miles of roadway. Residents travel an average of 26 vehicle miles daily and are highly dependent on automobile transportation. To ensure the area's roadway system is safe for those traveling it, the Surface Transportation Block Grant Program helps to fund the resurface, reconstruction, or redesign of roads or intersections. The Commission updated the TMA's Congestion Management Plan (CMP) in 2021 as well as the annual Transportation Improvement Program (TIP). [Click here to access the CMP.](#) [Click here to access the TIP.](#)

Roadway Performance Measures



Source: Crash data from WisDOT 2017-2021. Bridge, PASER data from WisDOT 2019, 2020.

Top Four Roadways with the Heaviest Traffic Volume



Source: WisDOT 2017-2018

ROADWAY PROJECTS IN THE APPLETON (FOX CITIES) TMA

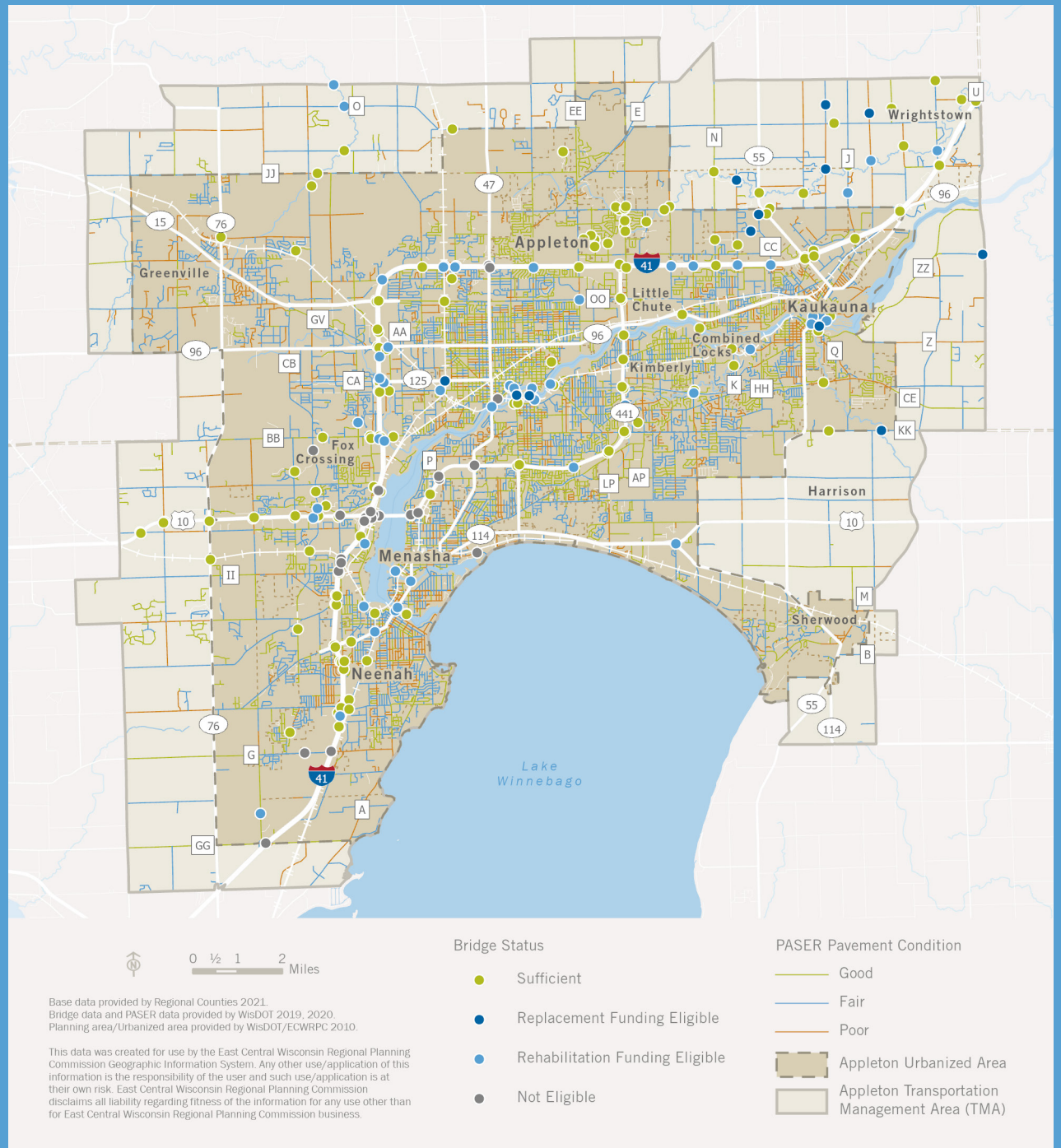
- 2022**
- WIS 55 Resurface**
I 41 to WIS 54
12.99 miles
 - Miscellaneous**
Hwy JJ Intersection
0.02 miles
 - I 41 Rehabilitation**
STH 15 to CTH J
11.99 miles
 - WIS 15 Expansion**
CTH T / Givens Rd. to USH 45
10.82 miles
 - USH 10 Reconstruction**
Village of Harrison
3.79 miles
 - WIS 441 Bridge Rehabilitation**
USH 41 to CTH KK
1.93 miles
 - STH 114 Resurface**
USH 10 to STH 55
1.39 miles
 - Emons Rd. Reconstruction**
CTH N to Pinecrest Blvd.
0.748 miles

ROADWAYS

PASER PAVEMENT

CONDITION & BRIDGE

STATUS



TRANSIT

Valley Transit is the primary public transit provider within the Appleton (Fox Cities) TMA. In addition to its traditional fixed-route public bus system, Valley Transit provides complementary on-demand paratransit services, regional employment transportation (with its Connector Service) and seasonal trolley rides in downtown Appleton. Valley Transit's 22 fixed bus routes operate across municipal boundaries, and the COVID-19 pandemic impacted ridership as people took 640,194 total trips in 2020, contrasted to 1,112,264 in 2019. For those who want to travel outside of the TMA, Amtrak offers a connecting bus stop in Appleton that makes two round trips daily from Green Bay to Milwaukee.

Transit Performance Measures



230.6

MILES OF FIXED TRANSIT ROUTES



61%

OF PEOPLE LIVE WITHIN 1/2 MILE FROM A TRANSIT STOP



63%

OF GROCERY STORES HAVE A TRANSIT STOP WITHIN 1/8 MILE



92%

OF GROCERY STORES HAVE A TRANSIT STOP WITHIN 1/2 MILE



56%

OF HOSPITALS & CLINICS HAVE A TRANSIT STOP WITHIN 1/8 MILE



87%

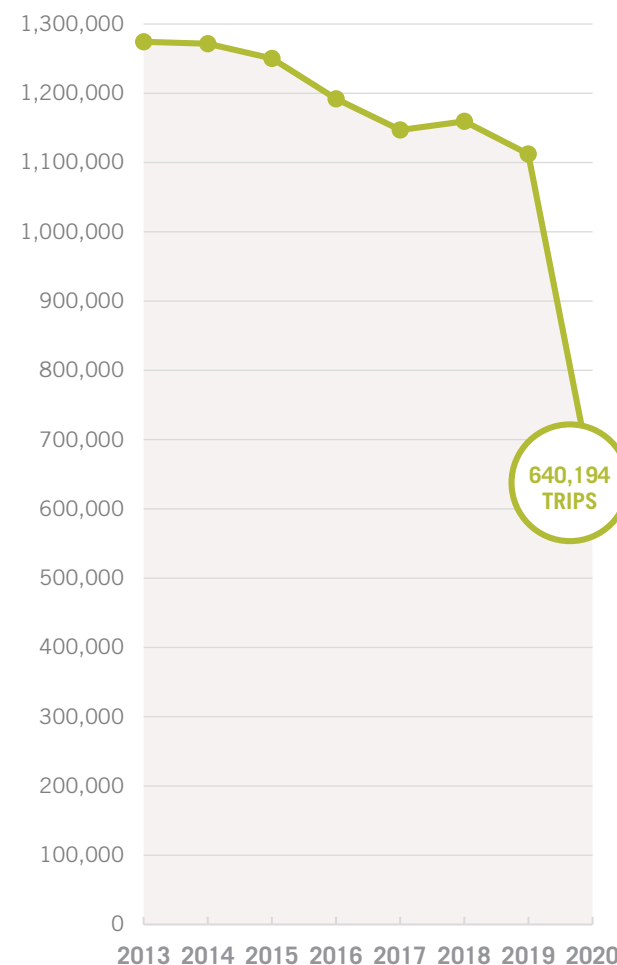
OF HOSPITALS & CLINICS HAVE A TRANSIT STOP WITHIN 1/2 MILE



68%

OF PARKS HAVE A TRANSIT STOP WITHIN 1/2 MILE

Annual Boardings: Valley Transit



Source: ECWRPC 2020

Source: Federal Transit Administration 2020

TRANSIT SERVICES

IN THE APPLETON (FOX CITIES) TMA



VALLEY TRANSIT

PUBLIC TRANSPORTATION



VALLEY TRANSIT II PARATRANSIT

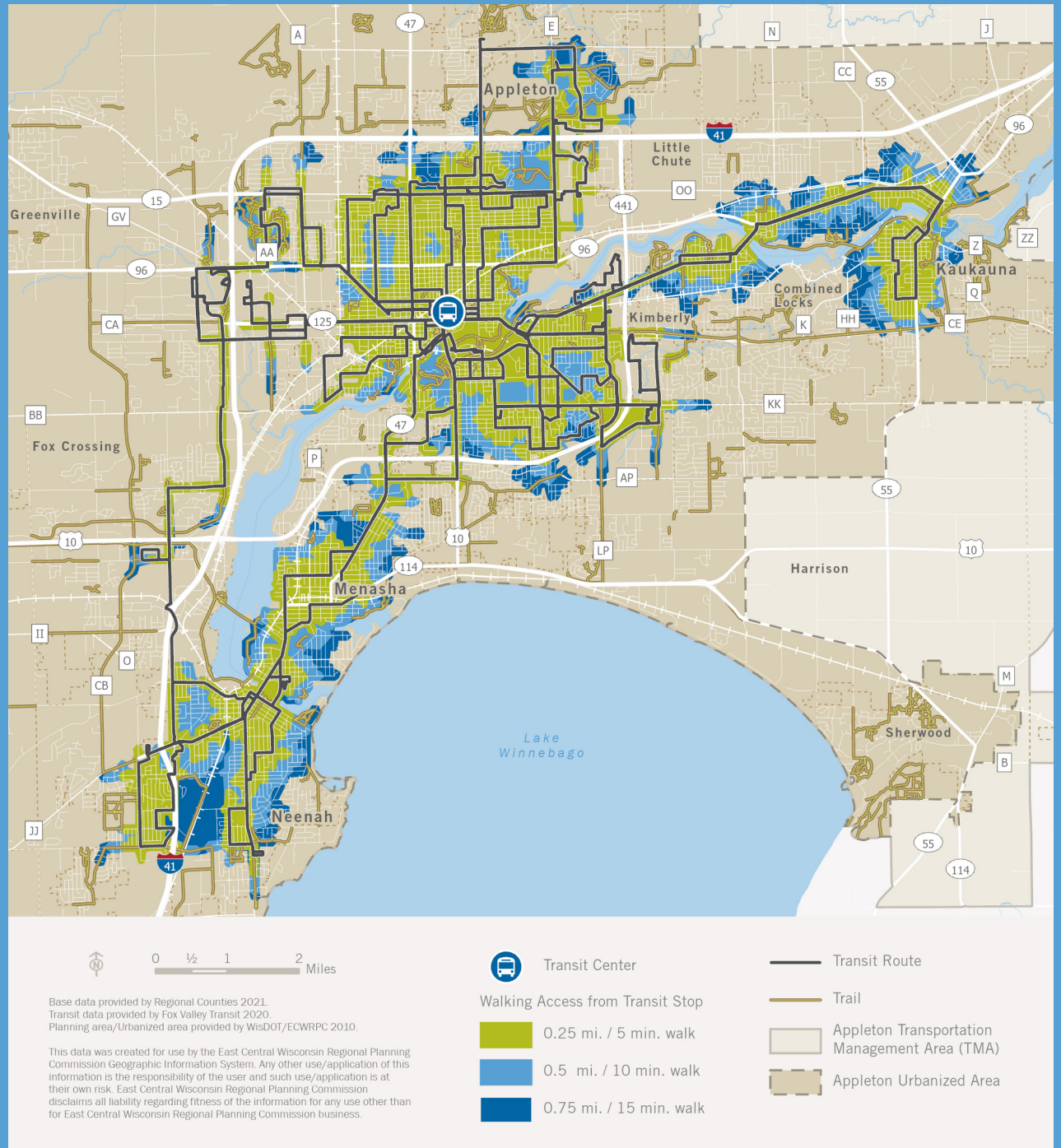
SPECIALIZED TRANSPORTATION



THE CONNECTOR, DIAL-A-RIDE, & MAKE THE RIDE HAPPEN

SPECIALIZED TRANSPORTATION

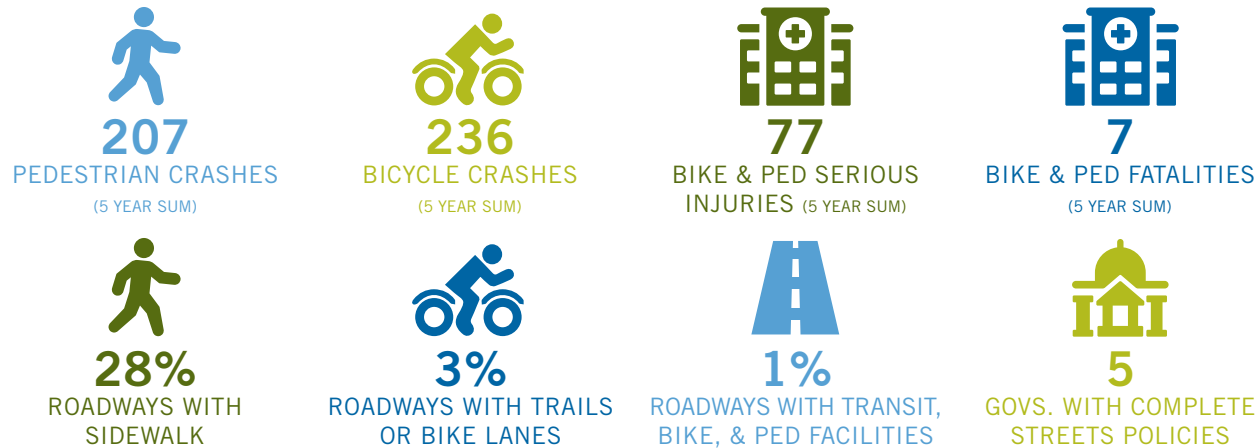
TRANSIT VALLEY TRANSIT WALKABILITY



BICYCLE & PEDESTRIAN NETWORK

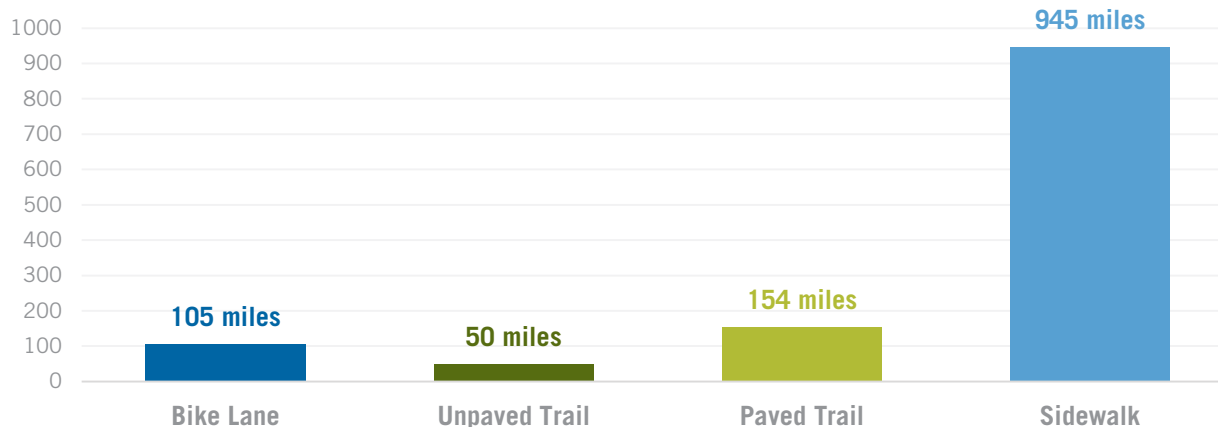
Bicycling and walking are popular forms of recreation and exercise that also serve an important transportation function. Nearly 1/3 of the population is not able to drive (due to factors such as age and ability), making it vital for communities to plan transportation networks that support all modes of travel. The Appleton (Fox Cities) TMA's bicycle and pedestrian network is steadily growing with future expansion guided by local, county, and regional bicycle and pedestrian plans. Notably, the Commission updated the TMA's bicycle and pedestrian plan in 2021. [Click here to access the plan.](#)

Bicycle & Pedestrian Performance Measures

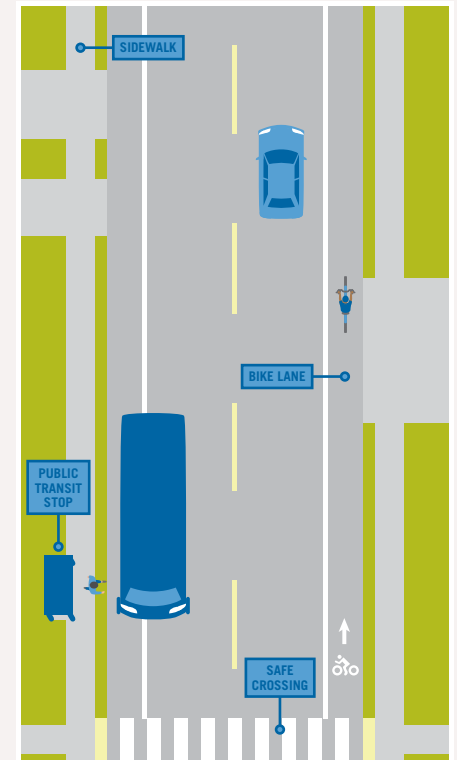


Crash data source: WisDOT 2017-2021. Bike/Ped facility data source: ECWRPC 2021.

Bicycle & Pedestrian Facility Mileage



Source: ECWRPC 2021

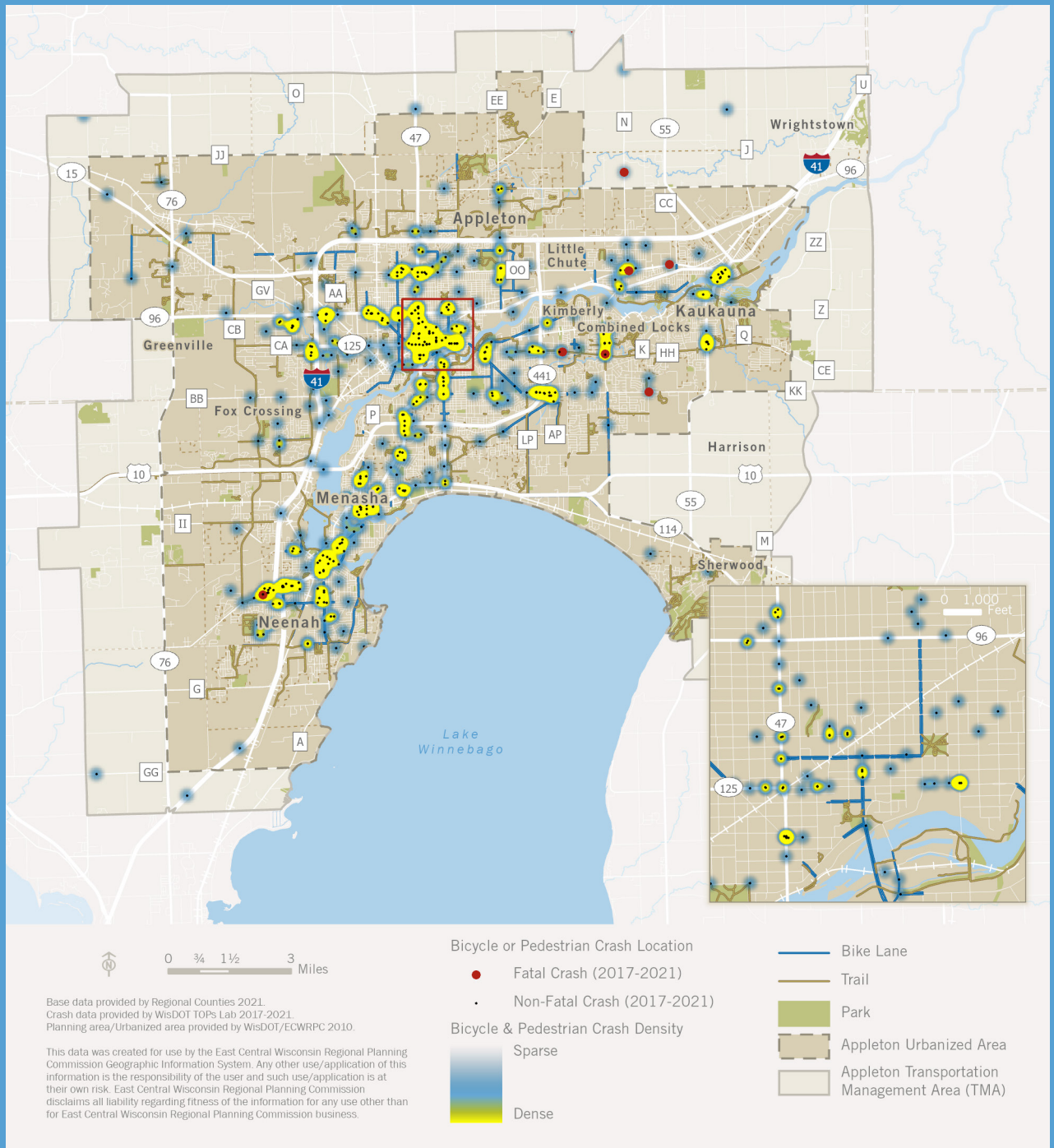


COMPLETE STREETS

A complete street may include sidewalks, bike lanes (or wide paved shoulders), special bus lanes, comfortable and accessible public transportation stops, frequent and safe crossing opportunities, median islands, accessible pedestrian signals, curb extensions, narrower travel lanes, roundabouts, and more. Each street should be examined in its own context to determine the appropriate bicycle and pedestrian facilities.

Complete streets are for everyone, no matter who they are or how they travel.

BICYCLE & PEDESTRIAN NETWORK CRASH DENSITY



SAFE ROUTES TO SCHOOL

The East Central Wisconsin Regional Safe Routes to School (SRTS) Program focuses on empowering local communities and school districts with the resources and knowledge needed to implement SRTS activities. By working to make it safer and more appealing for students (grades K–8) to walk and bike to school, the Regional SRTS Program is continually making strides to improve childhood health, reduce traffic congestion and pollution, and create more-livable communities. Projects range from walking and biking audits, to coordinating one day events, such as Walk to School Day, to educate and encourage students to walk and bicycle to school.

2021 School Participation

School District	# of Participating Schools
Appleton Area School District	14
Kaukauna Area School District	4
Kimberly Area School District	4
Neenah Joint School District	3
Hortonville Area School District	2
Menasha Joint School District	2
Little Chute School District	1

Source: ECWRPC 2021

SRTS Performance Measures



30%

OF ALL K-8 SCHOOLS ARE PARTICIPATING IN THE SRTS PROGRAM



21

SCHOOLS PARTICIPATED IN INTERNATIONAL WALK TO SCHOOL DAY



25

SCHOOLS PARTICIPATED IN BIKE TO SCHOOL MONTH



5

SCHOOLS PARTICIPATED IN FREQUENT WALKER PROGRAM



0

SCHOOLS PARTICIPATED IN YOUTH ENGAGEMENT PROGRAM



5

SCHOOLS PARTICIPATED IN WALKING SCHOOL BUS PROGRAM



8

SCHOOLS PARTICIPATED IN WINTER WALK TO SCHOOL MONTH

Source: ECWRPC 2021

GUIDING PRINCIPLES THE SIX E'S



EQUITY



ENGAGEMENT



EVALUATION



ENGINEERING

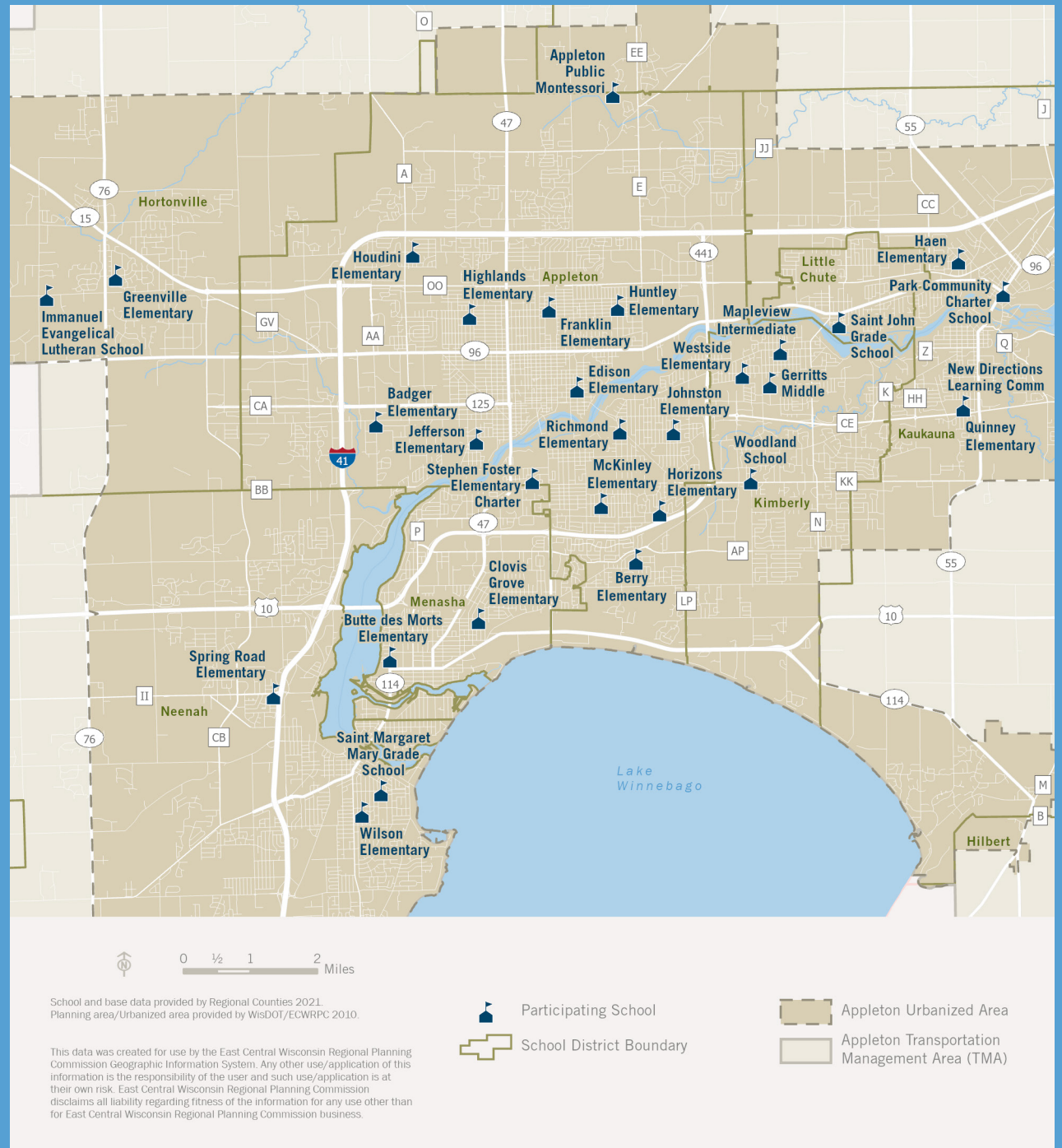


ENCOURAGEMENT



EDUCATION

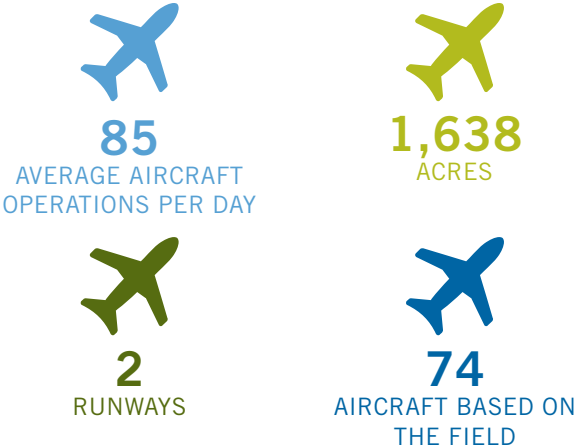
SAFE ROUTES TO SCHOOL PARTICIPATING SCHOOLS & SCHOOL DISTRICTS



AIRPORTS

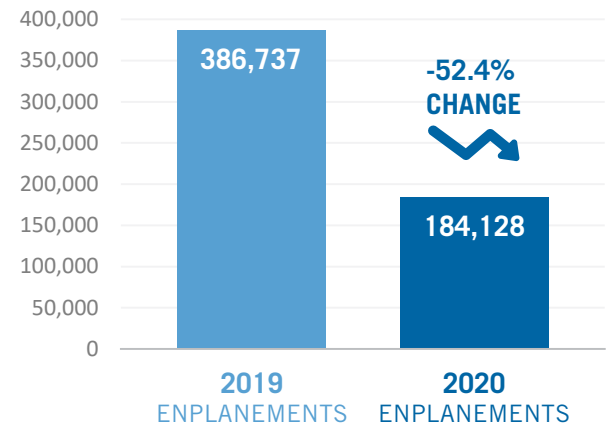
The Appleton International Airport (ATW), a small hub airport, serves the Appleton (Fox Cities) TMA and beyond. Opened in 1965, ATW is the third largest airport in Wisconsin and the fourth fastest growing airport in the United States. The airport offers flights to 15 destinations which are serviced via four commercial airlines: American, Delta, United, and Allegiant. The Appleton Flight Center at ATW provides private aviation services and attracts attendees of the annual EAA AirVenture event held in nearby Oshkosh, Wisconsin.

Airport Performance Measures



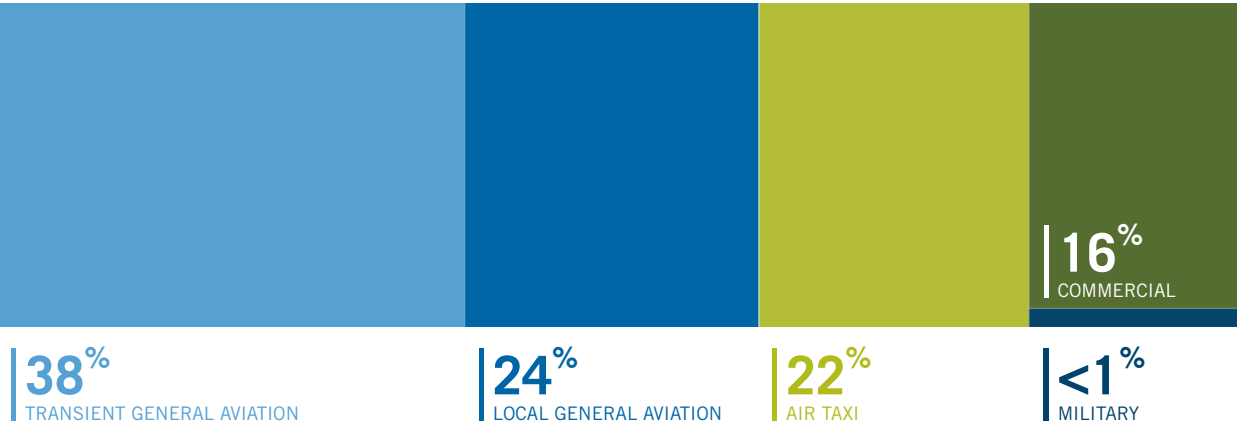
Source: AirNav accessed 2021

Annual Passenger Boarding at ATW



Source: Federal Aviation Administration 2020

Annual Aircraft Operations by Type at ATW



Source: AirNav accessed 2021

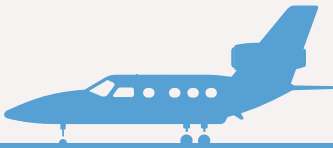
AIRCRAFT TYPES

AT APPLETON INTERNATIONAL AIRPORT



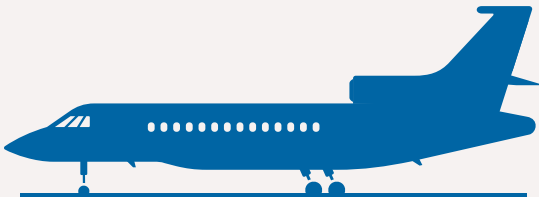
SINGLE ENGINE AIRPLANES

50 AIRCRAFT BASED ON THE FIELD



MULTI-ENGINE AIRPLANES

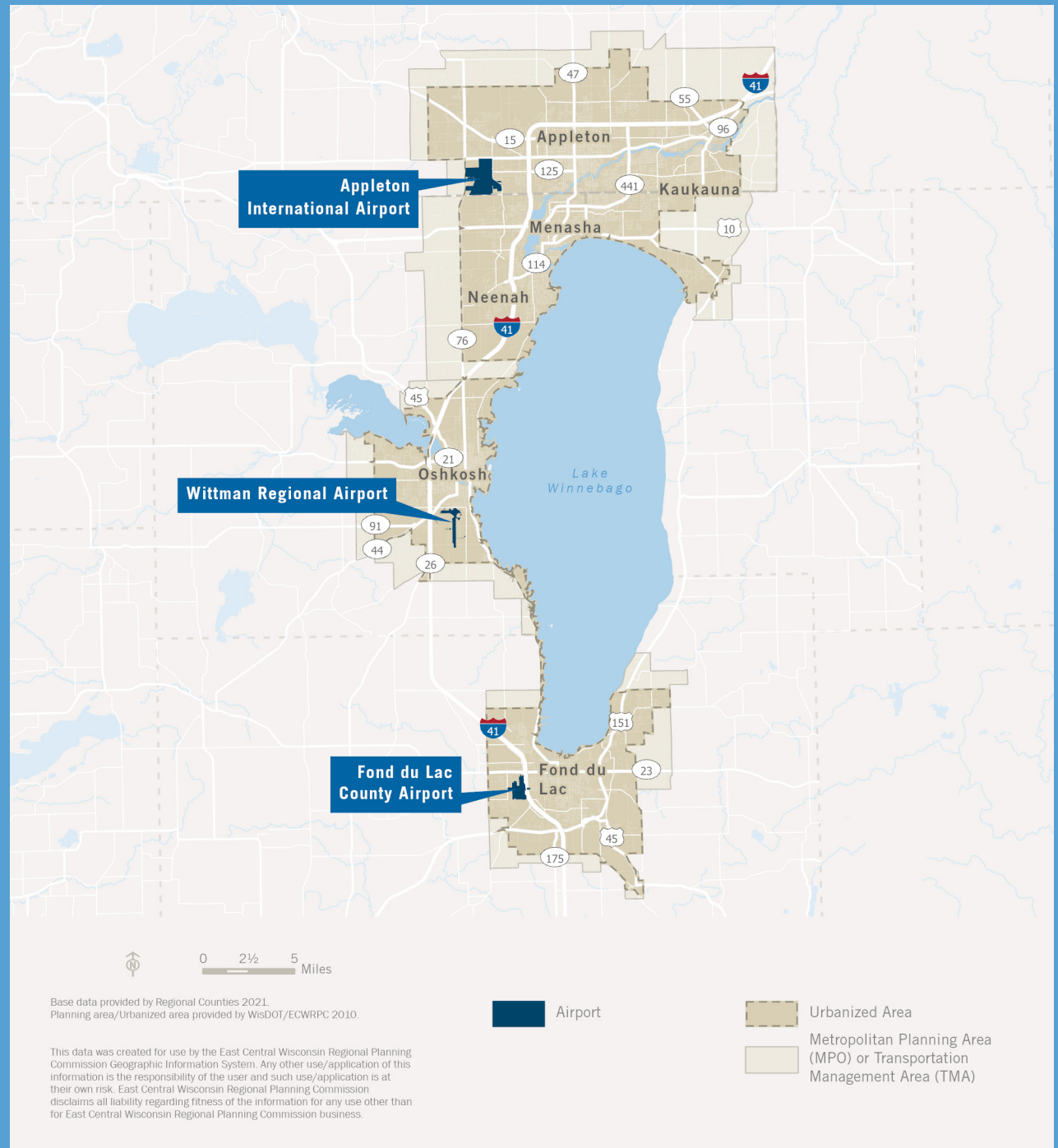
17 AIRCRAFT BASED ON THE FIELD



JET AIRPLANES

7 AIRCRAFT BASED ON THE FIELD

AIRPORTS REGIONAL LOCATIONS



FREIGHT

A majority of the freight tonnage traveling through the Appleton (Fox Cities) TMA is carried by semi-trucks along I 41, USH 10, STH 441, STH 76, STH 55, and STH 47, or by trains over the railway system. The cargo may range anywhere from paper products to manhole covers. Notably, in 2021, WATCO purchased 650 miles of rail line in Wisconsin and Michigan from Canadian National. Several of these newly-acquired rail lines are located in the Fox Cities. Over the years, some former rail lines in the TMA have been converted to public-use trail by the Rails-to-Trails Conservancy, forming portions of the Loop the Locks and Loop the Little Lake trail systems.

Freight Performance Measures



235.4
MILES OF TRUCKING ROUTES



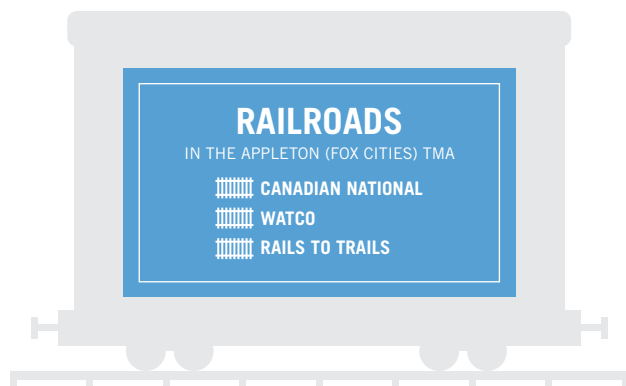
730
FREIGHT TERMINALS



117.5
MILES OF RAILROAD

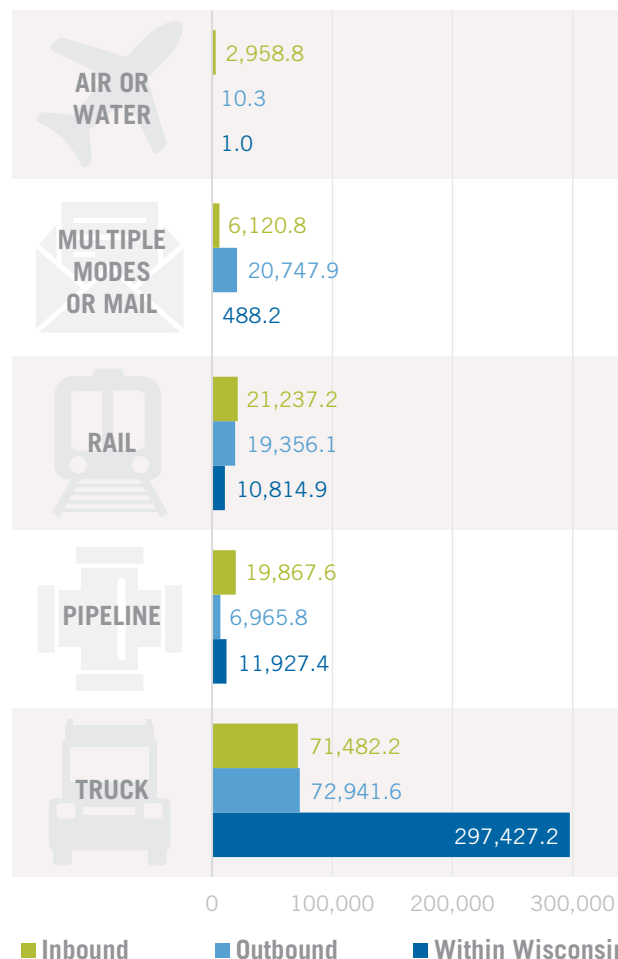


296
RAILROAD CROSSINGS



Source: WisDOT 2017

2020 Shipment Weight by Mode (1,000 tons)



Source: Freight Analysis Framework 2020 projections

TOP OUTBOUND SHIPMENTS IN WISCONSIN

TOP 10 COMMODITIES	1000 TONS	OVERALL %
NATURAL SANDS	30,278.3	21.9%
GRAVEL	10,760.4	7.8%
COAL-N.E.C.	10,571.4	7.6%
OTHER FOODSTUFFS	10,506.4	7.6%
NONMETAL MIN. PRODS.	8,466.0	6.1%
CEREAL GRAINS	7,218.9	5.2%
MIXED FREIGHT	6,923.8	5.0%
NEWSPRINT/PAPER	6,455.2	4.7%
BASE METALS	4,946.4	3.6%
OTHER AG PRODS.	3,385.3	2.4%

TOP INBOUND SHIPMENTS IN WISCONSIN

TOP 10 COMMODITIES	1000 TONS	OVERALL %
COAL-N.E.C.	21,107.8	16.2%
COAL	16,838.9	12.9%
OTHER FOODSTUFFS	9,867.8	7.6%
NEWSPRINT/PAPER	5,731.8	4.4%
ANIMAL FEED	5,435.8	4.2%
WOOD PRODS.	4,913.1	3.8%
BASE METALS	4,846.9	3.7%
CEREAL GRAINS	4,538.7	3.5%
GASOLINE	4,417.1	3.4%
NONMETAL MIN. PRODS.	4,013.5	3.1%

FREIGHT ROUTES & RESTRICTIONS

