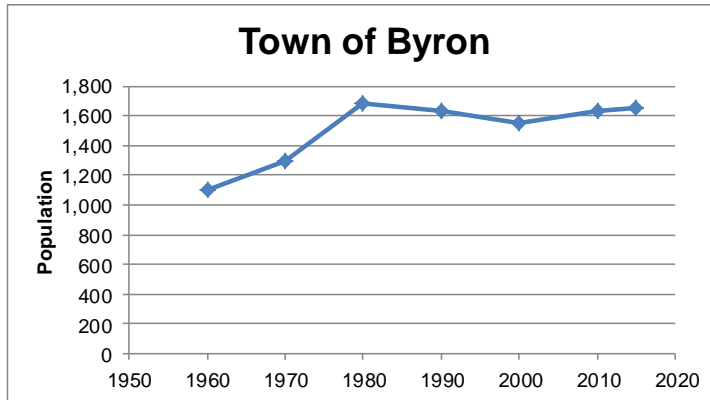


# DEMOGRAPHIC HIGHLIGHTS

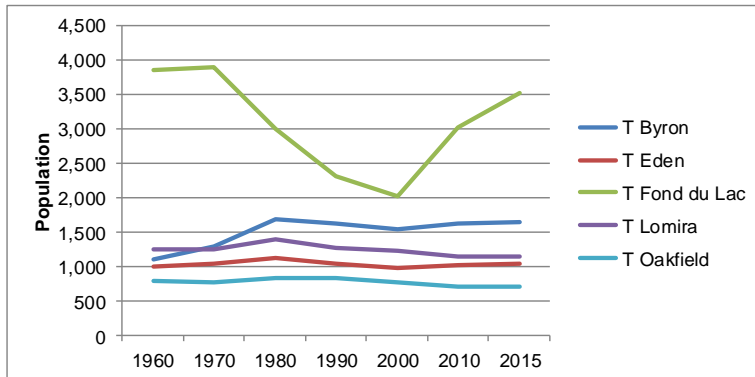
## TOWN OF BYRON

### Historic Population Trends



1960	1970	1980	1990	2000	2010	2015
1,102	1,300	1,681	1,634	1,550	1,634	1,652

Source: U.S. Census 1960 – 2010, WDOA 2015 Estimate



### Historic Population Trends

- Population of Town grew by over 52% between 1960 and 1980, far outpacing surrounding communities & Fond du Lac County
- Between 1980 and 2000, the population of the Town decreased by 8%. With the exception of the T Fond du Lac (-32%), the other towns saw similar decreases. However Fond du Lac County increased by 9%.
- Between 2000 and 2010, the population of the Town grew by about 5%; this was slightly more than the other jurisdictions.
- WDOA estimates that between 2000 and 2015, the population of Town increased by about 1%, or about the same as the County.

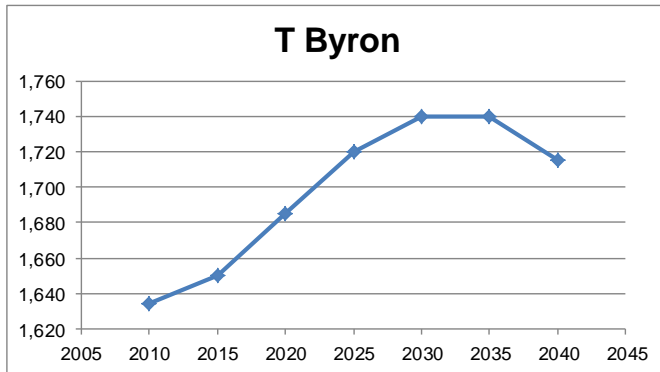
Municipality	1960	1970	1980	1990	2000	2010	2015
T Byron	1,102	1,300	1,681	1,634	1,550	1,634	1,652
T Eden	990	1,041	1,130	1,037	979	1,028	1,038
T Fond du Lac	3,851	3,896	3,001	2,310	2,027	3,015	3,516
T Lomira	1,242	1,247	1,391	1,280	1,228	1,137	1,153
T Oakfield	786	765	833	822	767	703	711
Fond du Lac County	75,085	84,567	88,964	90,083	97,296	101,633	103,124

Source: U.S. Census 1960 – 2010, WDOA 2015 Estimate

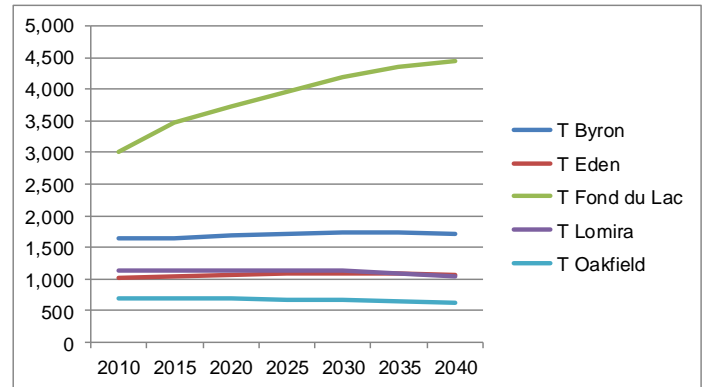
Municipality	1960 - 70	1970 - 80	1980 - 90	1990-2000	2000 - 10	2010 - 15
Town of Byron	18.0%	29.3%	-2.8%	-5.1%	5.4%	1.1%
Town of Eden	5.2%	8.5%	-8.2%	-5.6%	5.0%	1.0%
Town of Fond du Lac	1.2%	-23.0%	-23.0%	-12.3%	48.7%	16.6%
Town of Lomira, Dodge	0.4%	11.5%	-8.0%	-4.1%	-7.4%	1.4%
Town of Oakfield	-2.7%	8.9%	-1.3%	-6.7%	-8.3%	1.1%
Fond du Lac County	12.6%	5.2%	1.3%	8.0%	4.5%	1.5%

Source: U.S. Census 1960 – 2010, WDOA 2015 Estimate

## Future Population Projections



Source: WDOA, vintage 2013



Source: WDOA, vintage 2013

Municipality	2010	2015	2020	2025	2030	2035	2040	% Change 2010-2040
T Byron	1,634	1,650	1,685	1,720	1,740	1,740	1,715	5.0%
T Eden	1,028	1,035	1,060	1,080	1,090	1,090	1,075	4.6%
T Fond du Lac	3,015	3,475	3,720	3,965	4,185	4,345	4,455	47.8%
T Lomira	1,137	1,125	1,130	1,130	1,125	1,090	1,045	-8.1%
T Oakfield	703	700	690	680	665	645	615	-12.5%
Fond du Lac County	101,633	102,885	105,755	108,485	110,590	111,040	110,250	8.5%

Source: WDOA, vintage 2013

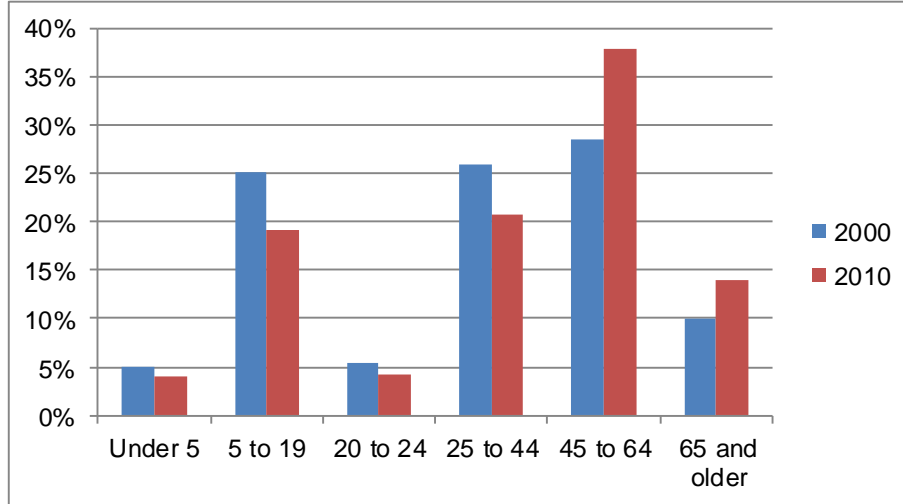
## Historic and future household and persons/household

Year	Town of Byron		Fond du Lac County		Wisconsin	
	No. HH	Person/HH	No. HH	Person/HH	No. HH	Person/HH
2010	621	2.63	40,697	2.41	2,279,768	2.43
2015	645	2.56	42,423	2.34	2,371,815	2.38
2020	669	2.52	44,308	2.31	2,491,982	2.35
2025	692	2.49	46,020	2.28	2,600,538	2.32
2030	709	2.45	47,419	2.25	2,697,884	2.30
2035	718	2.42	48,079	2.22	2,764,498	2.28
2040	714	2.40	48,076	2.20	2,790,322	2.26
<b>Percent Change</b>						
2010 to 2015	3.9%	-2.7%	4.2%	-2.9%	4.0%	-2.2%
2015 to 2020	3.7%	-1.6%	4.4%	-1.3%	5.1%	-1.2%
2020 to 2025	3.4%	-1.2%	3.9%	-1.3%	4.4%	-1.0%
2025 to 2030	2.5%	-1.6%	3.0%	-1.3%	3.7%	-1.0%
2030 to 2035	1.3%	-1.2%	1.4%	-1.3%	2.5%	-1.0%
2035 to 2040	-0.6%	-0.8%	0.0%	-0.9%	0.9%	-0.8%

Source: WDOA, Wisconsin Demographic Services Center, Vintage 2013 Population Projections

## DEMOGRAPHIC HIGHLIGHTS TOWN OF BYRON

### Population by Age Cohort



#### Median Age

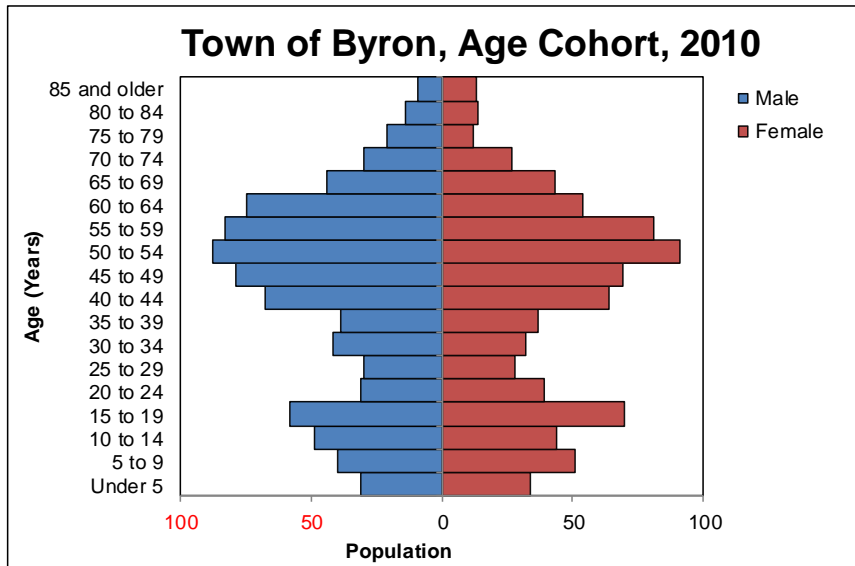
2000: 37.9 Years  
2010: 46.2 Years

#### Median Age by Gender 2010

Men: 46.8 Years  
Women: 45.2 Years

	Under 5	5 to 19	20 to 24	25 to 44	45 to 64	65 +
2000	5%	25%	5%	26%	29%	10%
2010	4%	19%	4%	21%	38%	14%

Source: U.S. Census 2000, 2010, DP-1

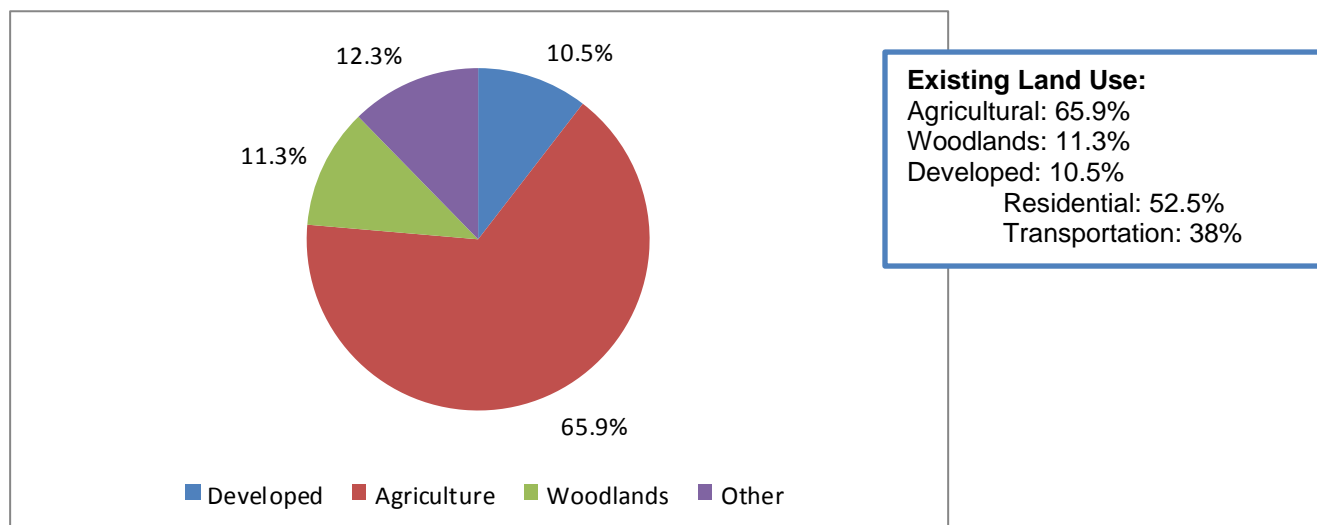


The median age of the Town increased by 8.6 years between 2000 and 2010. The Town is aging at a much faster rate than the County (3.3 yrs.) and the State (2.5 yrs.).

Source: U.S. Census 2010, DP-1

## LAND USE HIGHLIGHTS TOWN OF BYRON

### Existing Land Use, 2016



Source: East Central Wisconsin RPC, 2016

Land Use	Total Acres	Percent of Developed Land	Percent of Total
Single Family Residential	808.0	33.0%	3.5%
Farmsteads	476.4	19.5%	2.0%
Multi-Family Residential	0.0	0.0%	0.0%
Mobile Home Parks	0.0	0.0%	0.0%
Commercial	55.9	2.3%	0.2%
Industrial	19.8	0.8%	0.1%
Recreational Facilities	93.6	3.8%	0.4%
Institutional Facilities	10.0	0.4%	0.0%
Utilities/Communications	52.8	2.2%	0.2%
Transportation	928.7	38.0%	4.0%
Total Developed	2,445.1	100.0%	10.5%
Irrigated Cropland	0.0		0.0%
Non-irrigated Cropland	15,420.2		65.9%
Planted Woodlands	245.8		1.1%
General Woodlands	2,407.4		10.3%
Quarries	608.8		2.6%
Other Open Land	2,114.3		9.0%
Water Features	154.1		0.7%
Total Acres	23,395.5		100.0%

Source: East Central Wisconsin Regional Planning Commission, 2016

## Town of Byron Existing Land Use, 2000 and 2016

	2000			2016			Change 2000-2016	
Land Use	Total Acres	Percent of Developed Land	Percent of Total	Total Acres	Percent of Developed Land	Percent of Total	Total Acres	Percent Change
Single Family Residential	570.3	27.3%	2.4%	808.0	33.0%	3.5%	237.7	41.7%
Farmsteads	416.6	19.9%	1.8%	476.4	19.5%	2.0%	59.8	14.4%
Multi-Family Residential	0.0	0.0%	0.0%	0.0	0.0%	0.0%	0.0	0.0%
Mobile Home Parks	0.0	0.0%	0.0%	0.0	0.0%	0.0%	0.0	0.0%
Commercial	54.7	2.6%	0.2%	55.9	2.3%	0.2%	1.2	2.2%
Industrial	22.3	1.1%	0.1%	19.8	0.8%	0.1%	-2.6	-11.5%
Recreational Facilities	89.0	4.3%	0.4%	93.6	3.8%	0.4%	4.6	5.1%
Institutional Facilities	3.4	0.2%	0.0%	10.0	0.4%	0.0%	6.6	191.0%
Utilities/Communications	24.4	1.2%	0.1%	52.8	2.2%	0.2%	28.3	116.0%
Transportation	907.9	43.5%	3.9%	928.7	38.0%	4.0%	20.9	2.3%
Total Developed	2,088.6	100.0%	8.9%	2,445.1	100.0%	10.5%	356.5	17.1%
Irrigated Farmland	0.0		0.0%	0.0		0.0%	0.0	0.0%
Non-irrigated Cropland	16,099.2		68.8%	15,420.2		65.9%	-679.0	-4.2%
Planted Woodlands	214.8		0.9%	245.8		1.1%	30.9	14.4%
General Woodlands	2,246.0		9.6%	2,407.4		10.3%	161.4	7.2%
Quarries	439.2		1.9%	608.8		2.6%	169.6	38.6%
Other Open Land	2,172.3		9.3%	2,114.3		9.0%	-58.0	-2.7%
Water Features	135.4		0.6%	154.1		0.7%	18.7	13.8%
Total Acres	23,395.5			100.0%		23,395.5		100.0%
Source: East Central Wisconsin Regional Planning Commission, 2016								

### Land Use Change, 2000 to 2016:

Quarries: 38.6%

Developed: 17.1%

- Single – Family Residential: 41.7%
- Farmsteads: 14.45
- Utilities/Communications: 116%

Farmland: -4.2%

### Residential: Scattered

- Lost Arrow Road, Church Road, CTH Y, Hickory Road, CTH F

### Quarries:

- Hamilton Road area
  - Expansion
    - Michels Materials
    - Rademann Stone and Landscaping Company
  - New Quarries
    - Oakfield Stone Company, Inc.
    - Eden Stone Company Inc.

### Utilities/Communications:

- New wind farm in the southwest corner of the Town

### Building Permits (New Residential Construction), 2000 – 2015

- All single-family
- 97 Building Permits Issued
- 6.1 building permits were issued per year
- 2000 to 2007 Largest Period of Growth:
  - 73 Permits Issued
  - 8.1/year
- 2008 to 2015
  - 17 Permits Issued
  - 2.8/year

### Equalized Values (Land Only), 2008-2015

Year	T Byron	Percent Change	Fond du Lac County	Percent Change
2008	\$25,049,800	-	\$1,499,240,300	-
2009	\$23,748,600	-5.2%	\$1,503,615,600	0.3%
2010	\$22,849,800	-3.8%	\$1,482,832,200	-1.4%
2011	\$23,036,200	0.8%	\$1,496,223,200	0.9%
2012	\$22,739,700	-1.3%	\$1,460,058,500	-2.4%
2013	\$22,495,700	-1.1%	\$1,452,245,300	-0.5%
2014	\$22,705,900	0.9%	\$1,460,505,000	0.6%
2015	\$22,806,700	0.4%	\$1,481,393,400	1.4%

*Source: Wisconsin Department of Revenue, 2008-2015, Statement of Equalized Values*

### Residential Density, 2000 and 2010

#### Density

Number of housing units per square mile of total land area (units/square mile), excluding water.

MCD	2000			2010		
	Land Area in Sq. Miles	Total Units	Units/Sq. Mile	Land Area in Sq. Miles	Total Units	Units/Sq. Mile
<b>T. Byron</b>	<b>36.32</b>	<b>555</b>	<b>15.3</b>	<b>36.38</b>	<b>652</b>	<b>17.9</b>
T. Ashford	35.18	758	21.5	35.39	745	21.1
T. Eden	36	344	9.6	35.77	403	11.3
T. Empire	29.02	944	32.5	28.75	1,109	38.6
T. Fond du Lac	19.85	840	42.3	17.77	1,239	69.7
T. Lamartine	36.50	599	16.4	36.25	667	18.4
T. Leroy	36.56	396	10.8	36.15	405	11.2
T. Lomira	34.37	430	12.5	34.15	447	13.1
T. Oakfield	35.75	267	7.5	35.45	278	7.8
<b>Fond du Lac County</b>	<b>722.91</b>	<b>39,271</b>	<b>54.3</b>	<b>719.55</b>	<b>43,910</b>	<b>61.0</b>

*Source: U.S. Census, 2000 and 2010 SF 1, Table GCT-PH1*

**Table 5-6: Residential Intensity, 2000 and 2016**

	2000			2016		
	Units	Acres	Units/ Acre	Units	Acres	Units/ Acre
Single-Family	555	986.9	0.56	662	1,284.4	0.52
Multi-Family	0	0.0	0.00	0	0.0	0.00
<i>Source: U.S. Census 2000 and 2010, SF1; U.S. Census Residential Building Permits; ECWRPC Land Use, 2000 and 2016</i>						

**Intensity**

Units per acre of residential development

## ECONOMIC DEVELOPMENT HIGHLIGHTS TOWN OF BYRON

### Labor Force Characteristics

#### Population 16 Years Old and Older in Civilian Labor Force, 2000 and 2010-2014

Jurisdiction	2000			2010-2014 5-Year Estimate					
	Total	In Labor Force		Total		In Labor Force			
		Number	Percent	Estimate	MOE +/-	Estimate	MOE +/-	Percent	MOE +/-
<b>T Byron</b>	<b>1,191</b>	<b>898</b>	<b>75.4%</b>	<b>1,394</b>	<b>145</b>	<b>1,023</b>	<b>122</b>	<b>73.4%</b>	<b>4.0%</b>
Fond du Lac County	76,009	53,683	70.6%	81,711	153	56,401	594	69.0%	0.7%
Wisconsin	4,157,030	2,869,236	69.0%	4,531,244	1,325	3,073,680	5,721	67.8%	0.1%

Source: U.S. Census 2000, DP-3; 2010-2014 American Community Survey 5-Year Estimates, DP03

#### Civilian Labor Force

- Town Bryon: Little change between 2000 and 2010-2014 – 75.4% and 73.4%
- Town had higher participation rate than county and state

### Employment Status, 16 Years and Older, 2010-2014 ACS 5-Year Estimates

	Total Civilian Labor Force			Employed Persons								
				Total			Male			Female		
	Total	Male	Female	Estimate	MOE+/-	Percent	Estimate	MOE+/-	Percent	Estimate	MOE+/-	Percent
<b>T Byron</b>	<b>1,023</b>	<b>567</b>	<b>456</b>	<b>980</b>	<b>111</b>	<b>95.8%</b>	<b>524</b>	<b>128</b>	<b>92.4%</b>	<b>456</b>	<b>64</b>	<b>100.0%</b>
Fond du Lac County	56,401	29,470	26,931	52,643	648	93.3%	27,481	823	93.3%	25,162	507	93.4%
Wisconsin	3,073,680	1,597,569	1,476,111	2,852,018	6,289	92.8%	1,469,668	7,578	92.0%	1,382,350	4,228	93.6%

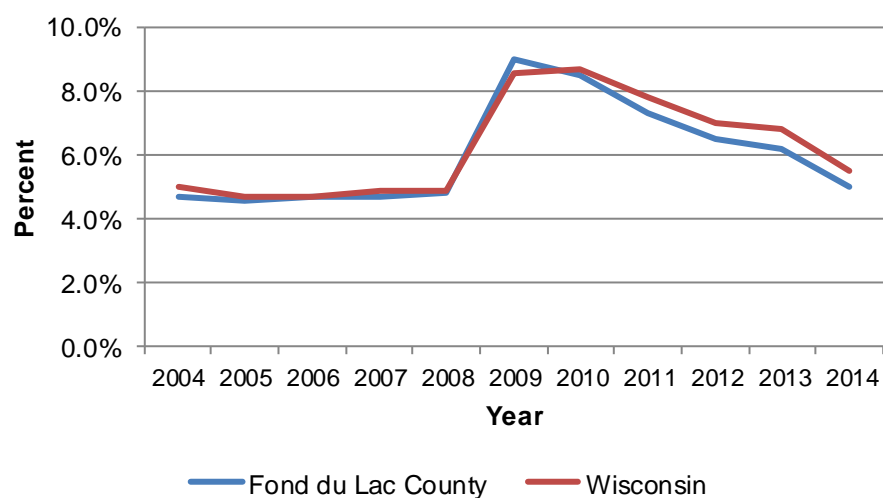
Source: U.S. Census 2010-2014 ACS 5-Year Estimates, DP03

#### Employment Status

- Number of employed person increased for all jurisdictions between 2000 and 2010-2014.
- Percent of employed persons decreased for all jurisdictions between 2000 and 2010-2014.
- A smaller percentage of men were employed in the Town than the County, the opposite was true for women.

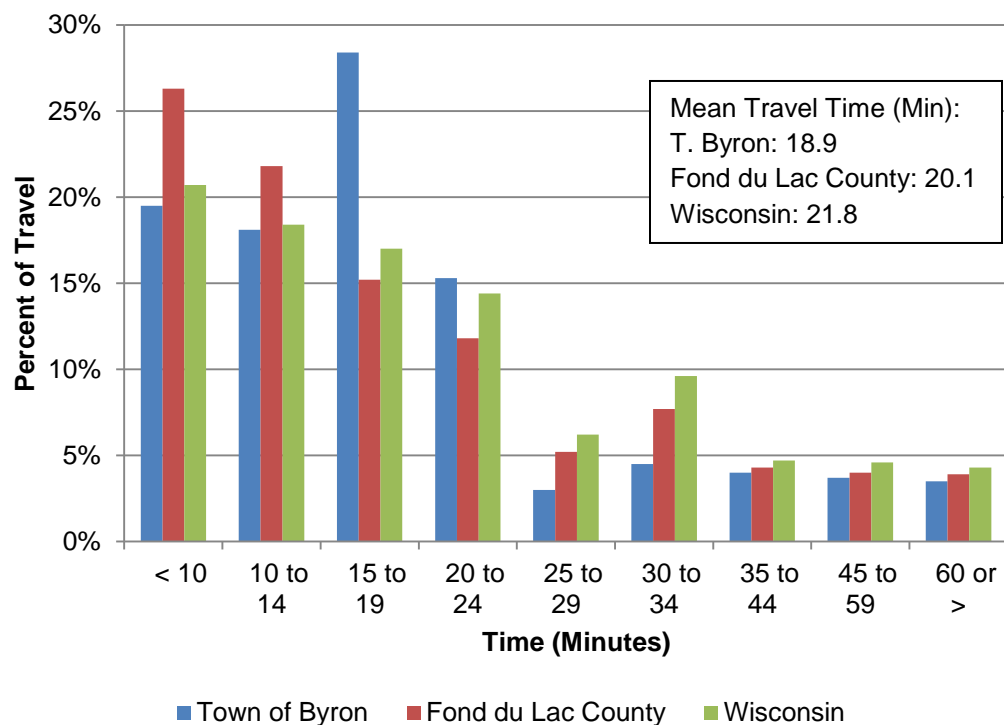


### Annual Average Unemployment Rates, 2004-2014



**Annual Average Unemployment Rate**  
Fond du Lac County –  
Decreasing since 2009 (9%)

### Percent of Travel Time to Work, 2010-2014 ACS 5-Year Estimates



### Top 10 Places of Employment for Town of Byron Residents, 2013

Rank	MCD	No. Workers	Percent
1	City of Fond du Lac	208	17.5%
2	City of Milwaukee	66	5.5%
3	City of Madison	60	5.0%
4	City of West Bend	25	2.1%
5	Village of Eden	22	1.8%
6	City of Oshkosh	20	1.7%
7	City of West Allis	19	1.6%
8	City of Eau Claire	16	1.3%
9	City of Racine	16	1.3%
10	City of Mayville	15	1.3%
	Other	724	60.8%
	Total	1,191	100.0%

Source: <http://onthemap.ces.census.gov/>

### Top 10 Places of Residence for Town of Byron Employees, 2013

Rank	MCD	No. Workers	Percent
1	City of Fond du Lac	146	14.6%
2	City of Oshkosh	44	4.4%
3	City of Waupun	31	3.1%
4	City of Milwaukee	22	2.2%
5	Village of Eden	19	1.9%
6	Village of Oakfeld	17	1.7%
7	City of West Bend	17	1.7%
8	City of Beaver Dam	16	1.6%
9	Village of Lomira	13	1.3%
10	City of Racine	12	1.2%
	Other	660	66.2%
	Total	997	100.0%

Source: <http://onthemap.ces.census.gov/>

## Strengths and Weaknesses

### Strengths

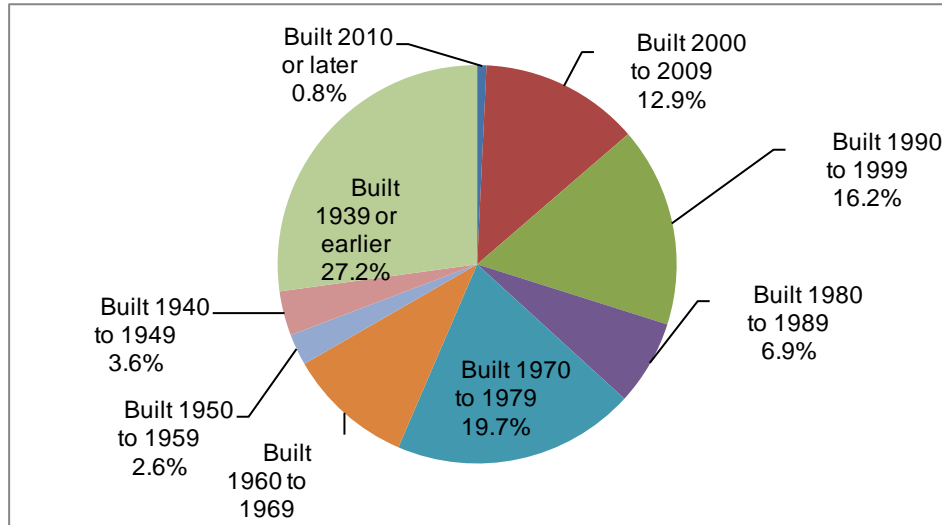
- Key transportation links (I 41, rail service, proximity to the Fond du Lac County Airport)
- Proximity to City of Fond du Lac and major employers
- Natural areas, open space and recreational opportunities
- Agricultural base to support agricultural industry
- Proximity to UW-Fond du Lac, Moraine Park Technical College, Marion College and UW-Oshkosh
- Access to metropolitan areas
- Availability of local healthcare facilities/providers
- Low crime rate
- Low taxes
- Non-metallic mineral resources
- Low cost of living
- Niagara Escarpment and natural beauty
- Lakeside Park (City of Fond du Lac)
- Lake Winnebago (proximity)

### Weaknesses

- Availability of infrastructure (e.g. sewer, water and telecommunications)
- Networking opportunities for businesses
- Access to high speed internet
- Business attraction
- Lack of public transportation
- Lack of diversity in economic base and employment options
- Lack of amenities and service needs for seniors
- Blocking off streets (crossings) by railroad hinders public transportation

## HOUSING HIGHLIGHTS TOWN OF BYRON

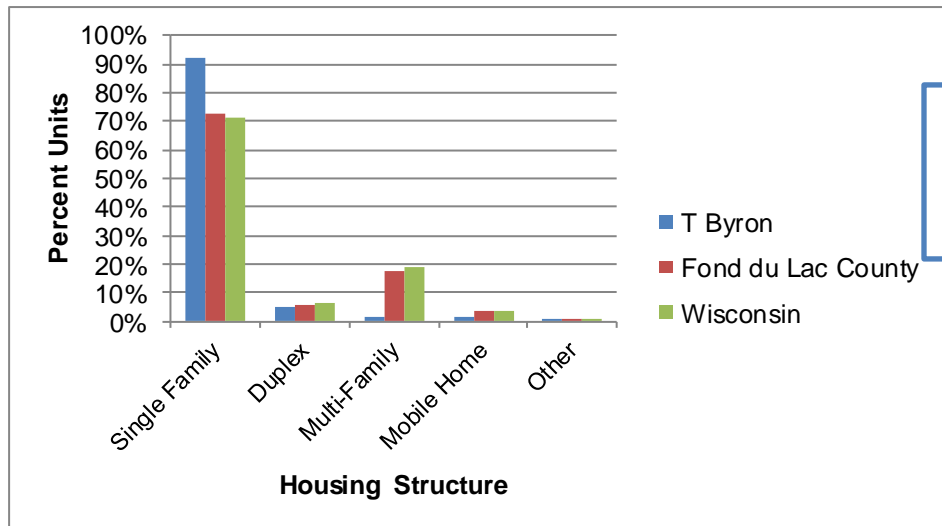
### Occupied Dwelling Units by Year Built, 2010-2014 ACS 5-Year Estimates



Source: U.S. Census 2010-2014 ACS 5-Year Estimate, DP04

\* Figure does not show Margin of Error

### Housing Units by Structure, 2010-2014 ACS 5-Yr Estimates



#### Single-Family:

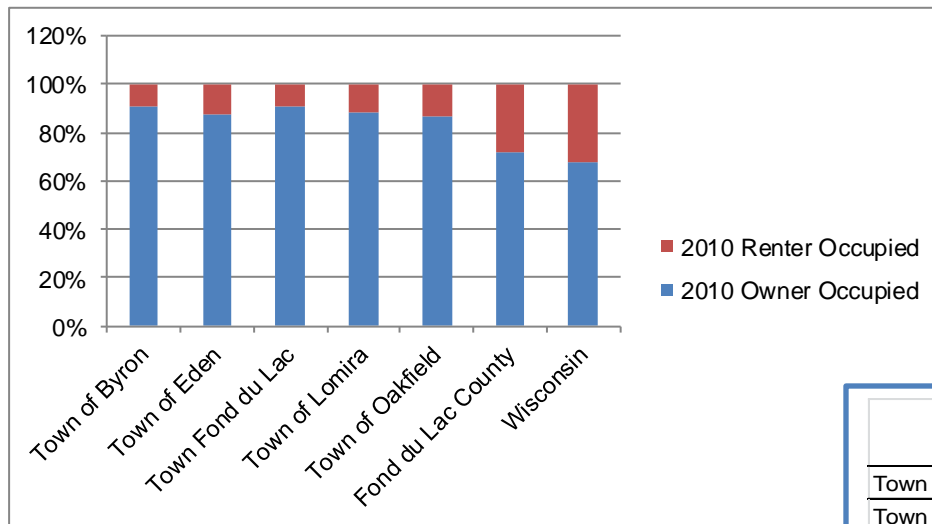
Town Byron: 91.9%

Fond du Lac County: 72.9%

Wisconsin: 69.4%

Source: U.S. Census 2010-2014 ACS 5-Yr Estimates, DP04

## Occupancy Characteristics, 2010



Source: U.S. Census 2010, SF-1, DP-1

	Owner Occupied	Renter Occupied
Town of Byron	91%	9%
Town of Eden	88%	12%
Town Fond du Lac	91%	9%
Town of Lomira	88%	12%
Town of Oakfield	86%	14%
Fond du Lac County	72%	28%
Wisconsin	68%	32%

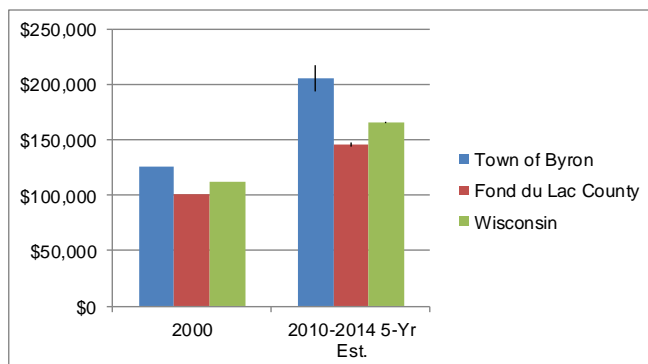
## Vacancy Rates, 2010

	Homeowner Vacancy Rate	Rental Vacancy Rate
Town of Byron	1.2%	5.0%
Town of Eden	1.7%	6.0%
Town Fond du Lac	2.5%	7.7%
Town of Lomira	1.0%	5.6%
Town of Oakfield	2.6%	2.8%
Fond du Lac County	2.0%	8.1%
Wisconsin	2.2%	8.0%

Source: U.S. Census 2010, SF-1, DP-1

**Standard:**  
Owner-Occupied: 1.5%  
Renter-Occupied: 5.0%

## Median Value of Owner Occupied Homes, 2000 & 2010-2014 ACS 5-Yr Est.

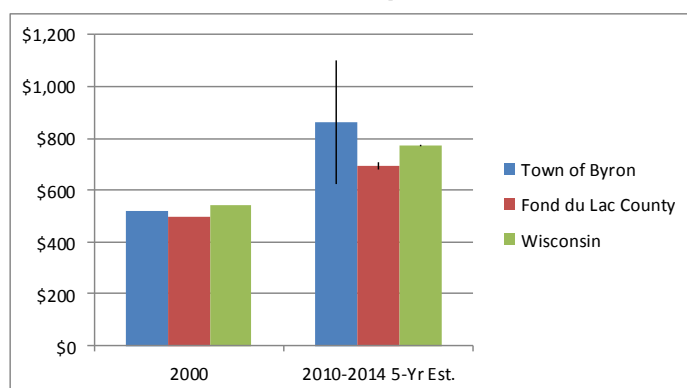


Source: U.S. Census 2000, 2010-2014 ACS 5-Year Estimates, DP04

	2000	2010-2014 5-Yr Est.	
		Estimate	MOE+/-
Town of Byron	\$126,000	\$205,800	+/-12,268
Fond du Lac County	\$101,000	\$146,200	+/-2,115
Wisconsin	\$112,200	\$165,900	+/-349

Source: U.S. Census 2000, 2010-2014 ACS 5-Year Estimates, DP04

## Median Gross Rent of Occupied Rental Units, 2000 & 2010-2014 ACS 5-Yr Est.

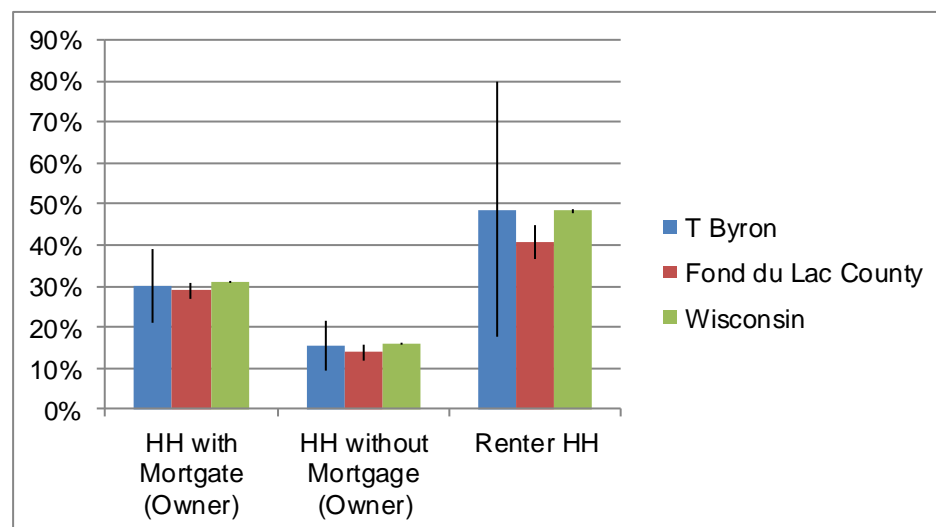


	2000	2010-2014 5-Yr Est.	
		Estimate	MOE+/-
Town of Byron	\$521	\$862	+/-240
Fond du Lac County	\$500	\$695	+/-13
Wisconsin	\$540	\$772	+/-3

Source: U.S. Census 2000, 2010-2014 ACS 5-Year Estimates, DP04

Source: U.S. Census 2000, 2010-2014 ACS 5-Year Estimates, DP04

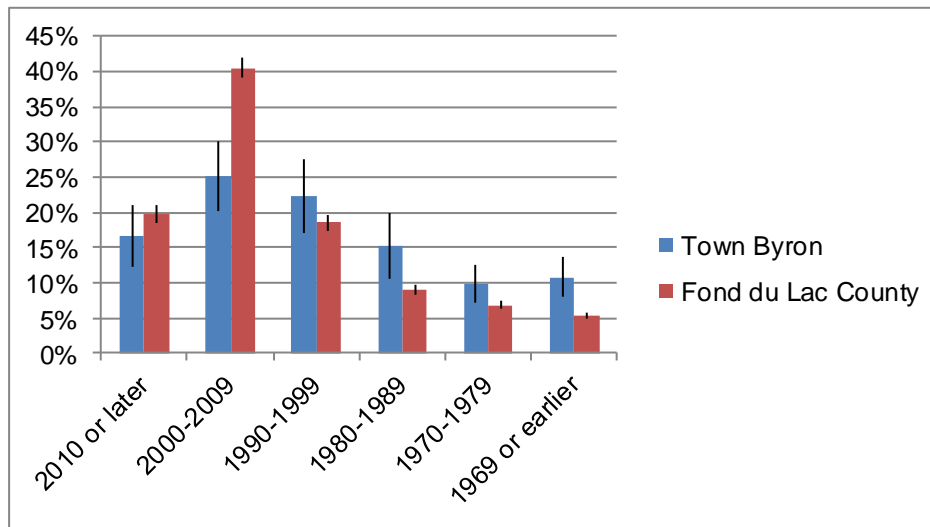
## Households Paying a Disproportionate Amount of Their Income for Housing, 2010-2014 ACS 5-Year Estimates



	HH with Mortgage (Owner)	HH without Mortgage (Owner)	Renter HH
T Byron	30%	15%	49%
Fond du Lac County	29%	14%	41%
Wisconsin	31%	16%	48%

Source: U.S. Census, 2010-2014 ACS 5-Year Estimates, DP04

## Year Householder Moved into Unit, 2010-2014 ACS 5-Year Estimate



	Town Byron	Fond du Lac County
2010 or later	17%	20%
2000-2009	25%	40%
1990-1999	22%	19%
1980-1989	15%	9%
1970-1979	10%	7%
1969 or earlier	11%	5%

Source: U.S. Census 2010-2014 ACS 5-Year Estimates, DP04

# TRANSPORTATION HIGHLIGHTS

## TOWN OF BYRON

### Streets and Highways

Annual Average Daily Traffic (AADT 2011, 2014) (Map 8-1)

- Major corridors
  - I- 41 (Rural Principal Arterial)
  - STH 175 (Rural Major Collector)
  - CTH B (Rural Major Collector – may be upgraded to rural minor arterial) – link to Eden
  - CTH D (Rural Major Collector)

PASER RATINGS – Updated every 2 years (Map 8-2)

- 38% - Excellent to Very Good (Blue)
- 43% - Good to Fair (Green)
- 3% (5 miles) – Fair to Fail
  - May want to address road condition
  - Most Cul-de-sacs
  - Except Fondy Road and CTH AY

### Pedestrian and Bicycle Facilities (Map 8-3)

- Wild Goose Trail
- Eisenbahn State Trail (potential extension)

### Trucking and Freight

- I-41 and CTH B (from I-41 east to Eden) are two designated long truck routes (meaning no trailer restrictions) in the Town.
- STH 175 has 75' trailer length restrictions

### Railroads

- Two railroad lines (operated by Canadian National) run through the Town.
  - One rail line runs in a north-south direction parallel with I-41
    - 286,000 pound railcar limit.
  - Second line runs from the Village of Eden to the City of Fond du Lac
    - 263,000 pound railcar limit

### Future Plans and Studies

- Road Maintenance of I-41 from Milwaukee to Oshkosh (expected 2017)
- STH 175 / I-41 potential interchange (2030 or later)
- Replacement of pavement on CTH B from CTH D to I-41 (likely 2018)



## UTILITIES AND COMMUNITY FACILITIES HIGHLIGHTS TOWN OF BYRON

Purpose: Inventory of current facilities and assessment of current and future needs

### Wastewater Collection and Treatment

- 672 active on-site systems
  - Conventional Systems - 350 (53%)
  - Mound Systems - 262 (39%)
  - Holding Tanks - 28 (scattered throughout Town)

### Drainage Districts

- 1 – northwest corner
- Purpose: Drain lands for agriculture

### Water Supply

- **2 Active Wells for the City of Fond du Lac in Town (Map 9-1)**
  - Well No. 24 is located at N4784 River Road
  - Well No. 25 is located at N4391 River Road

### Energy Supply and Transmission (Map 9-1)

- Wind Energy – 2 turbines along I-41 (WE Energies)
- Wind Energy – About 19 turbines (Forward Wind LLC)
- Electric Transmission Lines (3) ATC
  - 345 kV
  - 69 kV
  - 138 kV
- Electric Service Areas (2) (**SERVICE AREA WILL BE ADDED TO THE MAP**)
  - Wisconsin Electric Power Company (majority of Town)
  - Wisconsin Power and Light Company (Southwest corner)

### Natural Gas (Map 9-1)

- Natural gas transmission line cuts diagonally across the southeastern corner of the Town (ANR).
- Wisconsin Power and Light (Gas service area)

### Park and Recreation Facilities (Maps 9-2 and 5-1)

- 94 acres of recreational facilities including public parks, trails and recreational systems
- 55 acres of publically owned land (Hobbs Woods only)
- Town is exceeding the open space requirements

#### Standard:

10 acres/1,000 residents  
1,650 people (WDOA 2015 est.)  
Needed by standard – 16.5 acres

### **Cemeteries (Map 9-2)**

- Geiger Bethel Cemetery
- Byron Cemetery
- Genesee Cemetery (Closed for burials, Town provides financial support for maintenance)
- St. John's Cemetery

### **Public Safety and Emergency Services**

- Police service provided by the Fond du Lac County Sheriff's Department, as needed

#### **2 Service Areas (Map 9-3):**

- Fond du Lac County Sheriff Center
- Fond du Lac Sheriff Southeast

### **Fire Services and Emergency Management (Map 9-3)**

- Brownsville Fire Company
- Eden Fire Department
- Village of Lomira Fire Department
- Oakfield Volunteer Fire Department

### **Library**

- Fond du Lac Public Library
- Brownsville Public Library
- Lomira Quadgraphics Community Library
- Oakfield Public Library

### **Schools (Map 9-2)**

- Campbellsport School District (Are there any plans for expansion??)
- Fond du Lac Public School District
- Lomira School District
- Oakfield School District

### **Other Municipal Buildings (Map 9-2)**

- Byron Town Hall
  - Built in 1870 as the District Number 10 School
  - Purchased by the Town in 1966
- Town Garage
  - Built during the 1970's
- Storage Shed
  - Built about 3 years ago to store Town equipment
- Salt Shed
  - Built in the 1980's
- Town performs minor road maintenance, plows the Town roads in winter, mows roadside ditches once per year and cuts the grass at one of the cemeteries in the Town.

# AGRICULTURAL, NATURAL AND CULTURAL RESOURCES HIGHLIGHTS TOWN OF BYRON

## AGRICULTURAL RESOURCES

### Loss of Farmland Acres

Jurisdiction	1990	1997	2000	2001	2002	2003	2004	2005	2006	1990-97	2000-06
<b>T. Byron</b>	<b>19,583</b>	<b>19,312</b>	<b>18,964</b>	<b>18,941</b>	<b>18,895</b>	<b>18,891</b>	<b>18,812</b>	<b>18,743</b>	<b>18,680</b>	<b>-1.4%</b>	<b>-1.5%</b>
T. Eden	17,482	17,380	14,909	14,444	14,902	14,877	14,891	14,895	14,858	-0.6%	-0.3%
T. Fond du Lac	9,655	8,540	7,655	7,310	7,176	7,169	7,029	6,564	6,500	-11.5%	-15.1%
T. Oakfield	20,365	17,585	16,722	16,716	16,622	16,609	16,472	16,209	15,992	-13.7%	-4.4%
T. Lomira	-	-	18,052	18,032	17,989	17,895	17,876	17,856	17,677	-	-2.1%

Source: Wisconsin Town Land Use Data Book, UW-Extension, PATS, 1999. (data from 1990 and 1997)  
<http://www.pats.wisc.edu/> (data from 2000 to 2006).

#### Loss of Farmland Acres

According to UW-Extension, Program on Agricultural Technology Studies (PATS), the Town of Byron lost 903 acres between 2006 and 1990.

#### Prime Farmland (Map 10-1)

86 percent (20,056 acres) – All areas are prime farmland

(NRCS – USDA, Accessed 2013)

## NATURAL RESOURCES

#### Soil Limitations for On-Site Waste Disposal (Map 10-2)

74 percent (17,203 acres) – Very Limited

(NRCS – USDA, Accessed 2013)

#### Building Site Development (Map 10-3)

60 percent (14,047 acres) – Very Limited

(NRCS – USDA, Accessed 2013)

#### Environmental Features (Map 10-4)

- High Bedrock (Niagara Escarpment) -734 acres (3.1%)
- Steep Slopes (>12%/Niagara Escarpment) – 371 acres (1.6%)
- 100 Year Floodplain – 270 acres (1.2%)
- High Groundwater (<2 feet) - 11,346 acres (48.5%)

(NRCS – USDA, Accessed 2013)

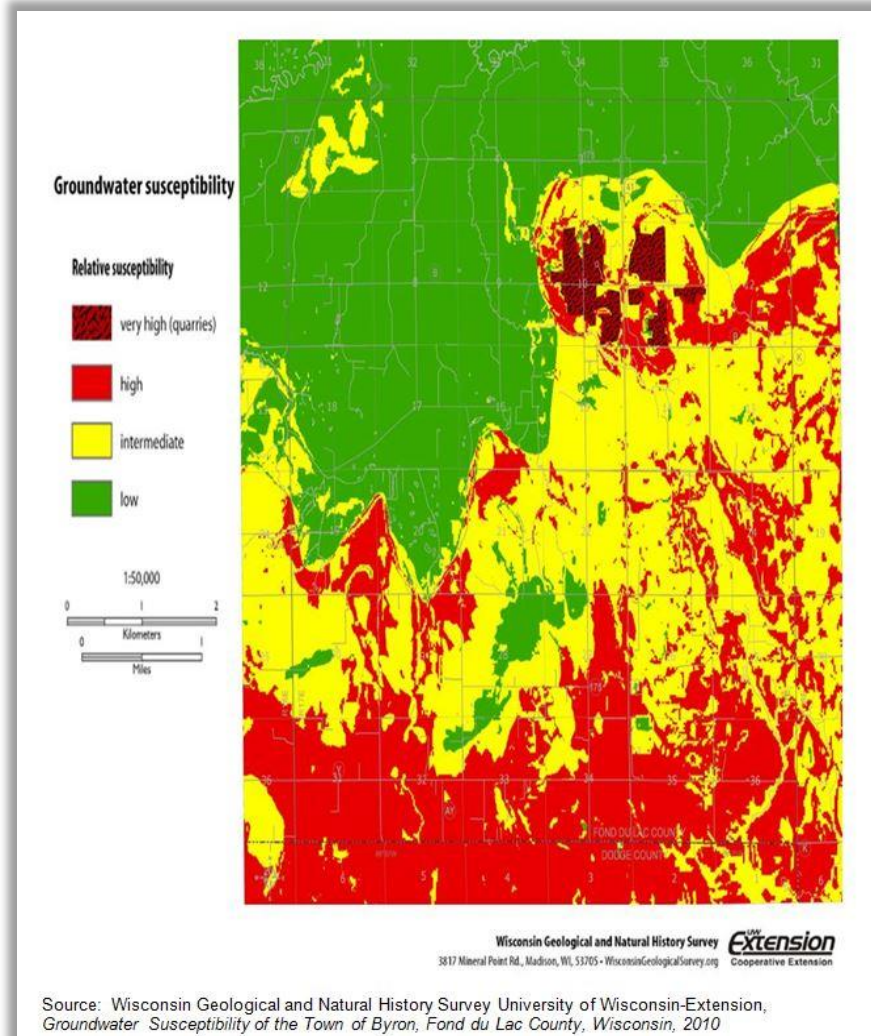
## NATURAL RESOURCES (Continued)

### Environmental Features (Map 10-5)

- Wetlands -1,552 acres (6.5%)
- Woodlands – 2,653 acres (11.3%)
- Oakfield Rail Prairie SNA (Wild Goose State Trail)

(WDNR, 2014; ECWRPC, 2016)

## Groundwater Susceptibility



### Groundwater Susceptibility

- Southeastern two-thirds of Town is underlain by fractured dolomite of the Silurian age.
- Dolomite forms are an important local aquifer; however parts of the Town are susceptible to groundwater contamination because the dolomite is fractured and covered with thin soils.
- Low to moderate susceptibility north of Silurian escarpment where soils are thick and clayey (north and northwest parts of Town).

#### **Well Water Results (1988 to 2008)**

- Coliform Bacteria – 43% tested positive (Indicator of contamination by fecal coliform and other pathogenic (waterborne disease-causing) organisms).
- Nitrate-Nitrogen – 28% exceeded 10 mg/l (Indicator of agricultural and lawn fertilizers, animal waste/bio-solid application to fields or septic systems).
- Triazine – 4 out of 95 wells showed elevated levels (Pesticide).
- Arsenic – none
- Chloride – About half (Indicator of contamination by septic systems, road salt, fertilizers, animal waste or other wastes)
- Hardness - Majority of the wells exceeded 200 mg/L with three wells greater than 600 mg/L (Ideal range for total hardness is typically between 150 and 200 mg/L or ppm of hardness as CaCO<sub>3</sub>).
- Sulfate – 5 of 95 wells exceeded standard (Naturally occurring).
- Iron – No wells exceeded 0.3 mg/L.
- Manganese – No wells exceeded 0.05 mg/L

#### **Solid Waste Landfills / Disposal Facilities (Map 5-1)**

- N3518 Kelly Road, NE1/4 of the NE1/4 of Section 23 (Town of Byron, Status Unknown)
- W5633 Campbell Road, NW 1/4 of the NW 1/4 of Section 35 (Majerus Landfill, Status Closed)
- HWY 41, NW1/4 of the NW1/4 of Section 35 (Majerus WBS, SW Wood burning Site, Status Closed)
- 8598 HWY 41, SW 1/4 of the SW 1/4 of Sec 26 (Sadoff & Rudoy Industries, Status Inactive)
- USH 41 over CTH F (WI DOT Bridge B20-24 and B20-09, HW Large Generator – One Time, Status Inactive)

## **CULTURAL RESOURCES**

- **Architecture and History Inventory (AHI) – 46 sites**
- **Yellowstone Trail – STH 175**
- **Locally Significant Historic Places**
  - Sylvester Joseph Wittman birthplace.
  - Camp Byron Tabernacle