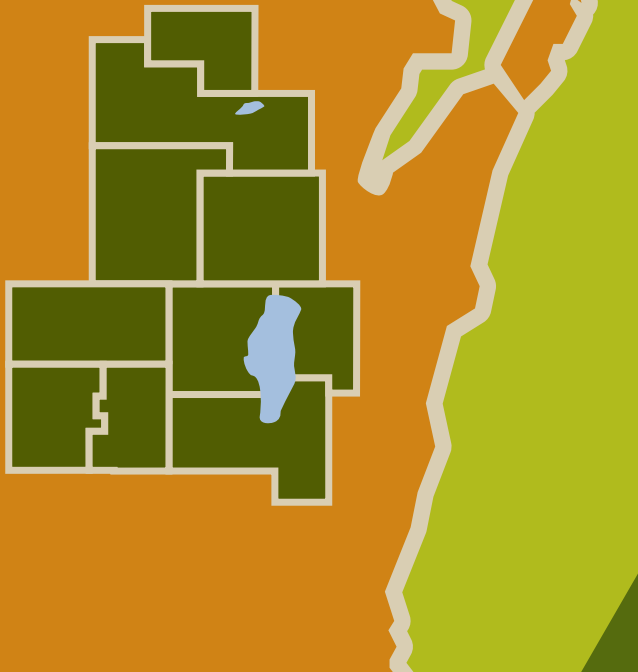

2020 - 2021

ANNUAL REPORT

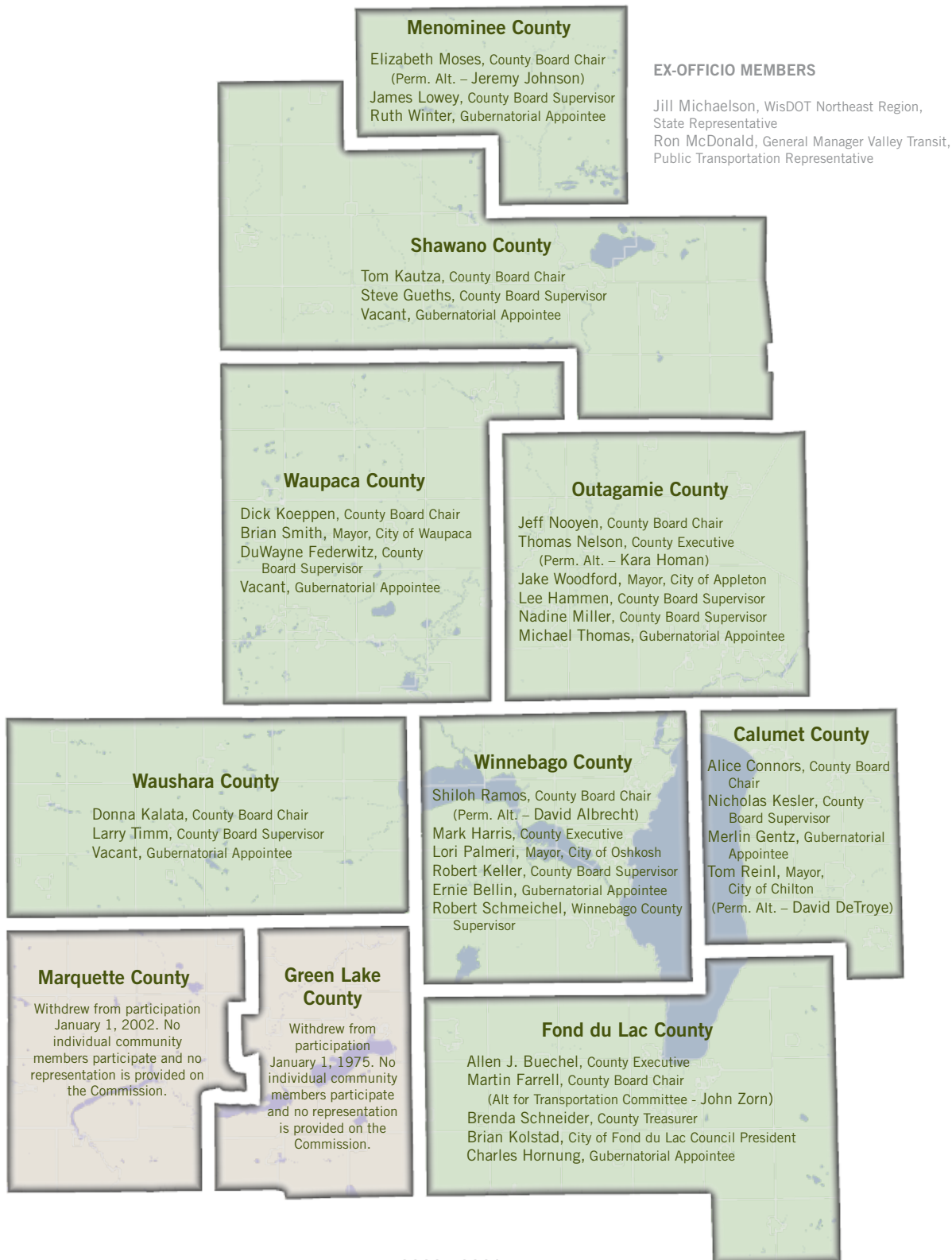


East Central Wisconsin
Regional Planning Commission

ECWRPC

Calumet • Fond du Lac • Menominee • Outagamie
Shawano • Waupaca • Waushara • Winnebago

EAST CENTRAL COUNTIES & COMMISSIONERS



MESSAGE FROM THE CHAIRMAN

To the Community Members and Elected Leaders of the East Central Region:

East Central Wisconsin Regional Planning Commission had a trying year in 2020, but through new leadership emerged a more streamlined and resilient organization to take on the challenges of 2021 and in future years.

In April 2020, the Commission Board approved a reorganization plan that prioritized four core program areas, which include Regional Comprehensive Planning, Economic Development Program, Transportation Program, and the Sewer Service Area (Water Quality Management Program). The Commission continues to administer the NR-135 Non-Metallic Reclamation Mining Program for four member counties in the region. While sharpening our focus on the four core program areas, the Commission also reduced the number of comprehensive plans and open space and recreation plans that would be completed in a year. The reorganization plan also identified strategies for the Commission to streamline processes, evaluate programs and reduce the levy for each of the member counties over the next three years.

The reorganization plan laid the foundation for the Commission to enter into an intergovernmental agreement with Outagamie County, which maintained the membership of our eight counties. In addition, through staff transitions the Commission was able to realign the agency's staffing needs with the reorganization plan and the skill sets necessary for the core program areas.

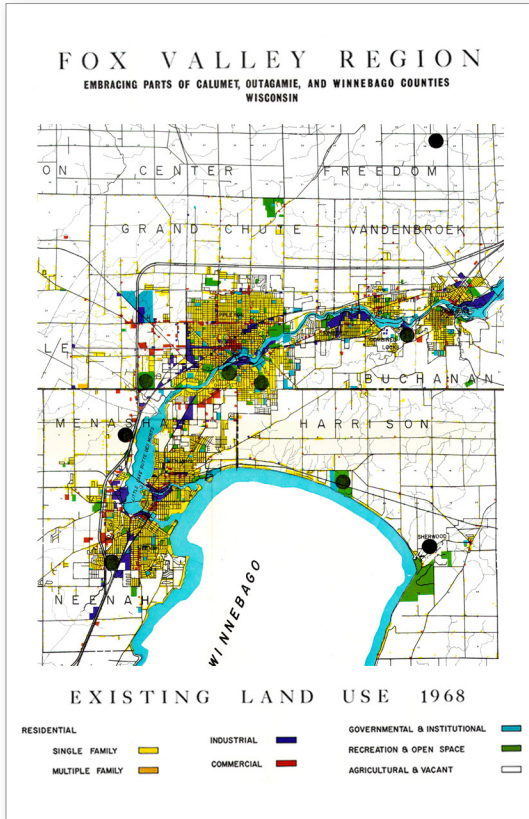
In January 2021, the Commission approved an updated 2021-2023 Strategic Plan that aligns the reorganization plan and the work program. The priorities outlined in each of these documents are now in alignment. The strategic plan outlines the roles and responsibilities for each of the Commission's standing committees for each of our core program areas.

While change is difficult, I am confident that the Commission Board and the new leadership at the Commission are creating an agency that will be more resilient for years to come, and I'm excited about what the future holds for the Commission.

Sincerely,

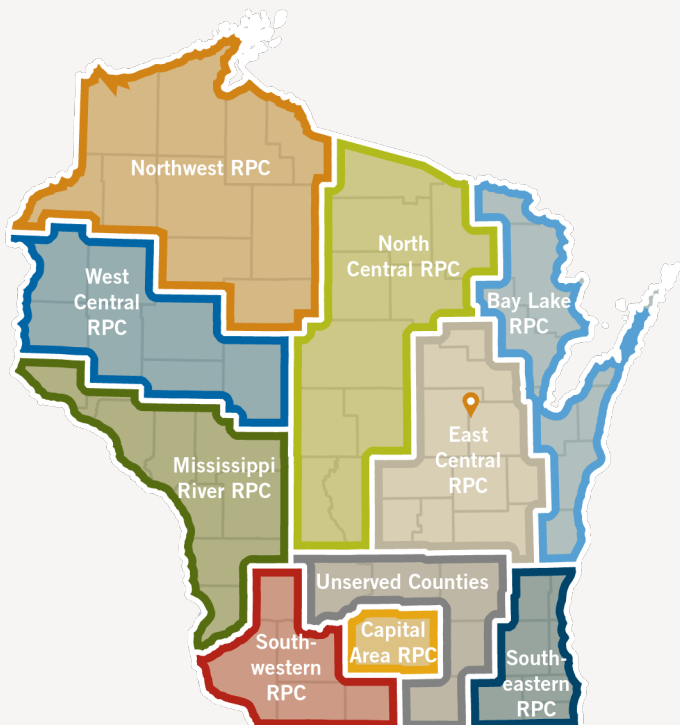
Martin Farrell, Chair
Fond du Lac County Board Chair

COMMISSION OVERVIEW



Agency History

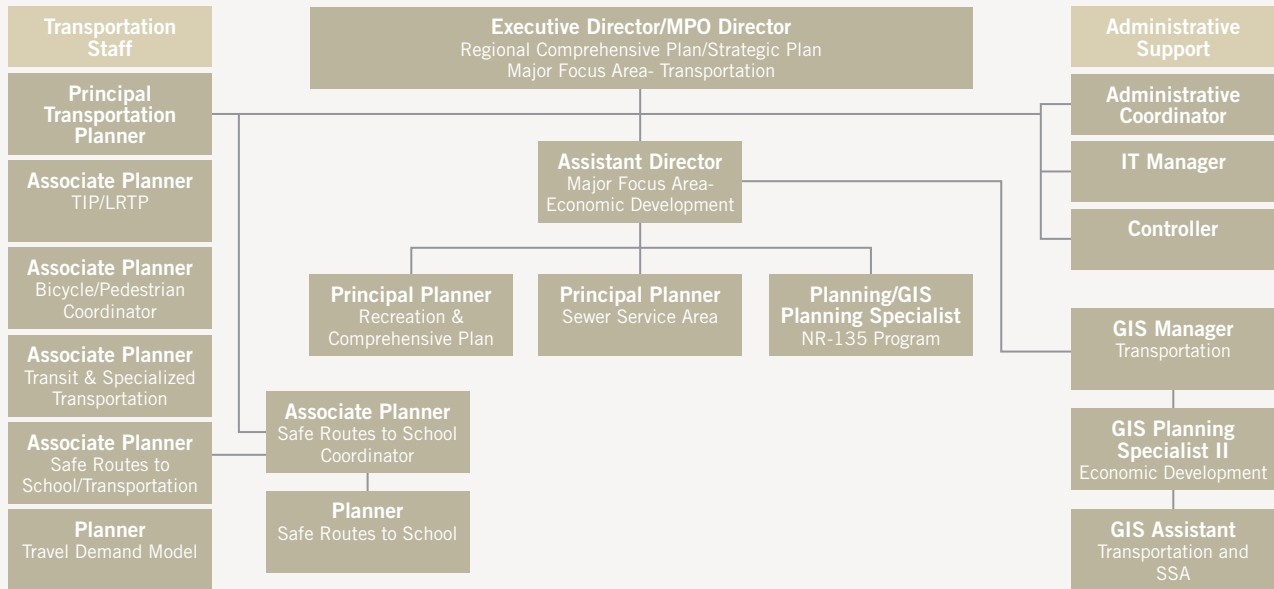
The East Central Wisconsin Regional Planning Commission (ECWRPC) was created under Executive Order No. 41, issued by Governor Patrick J. Lucey, dated June 29, 1972. This action was taken after the submittal of petitions by the ten counties within the East Central Region pursuant to Wisconsin State Statutes § 66.945 (now State Statutes § 66.0309). ECWRPC was preceded by two area-wide planning agencies: the Fox Valley Council of Governments (FVCOG) and the Northeastern Wisconsin Regional Planning Commission. The Fox Valley Council of Governments was formed in 1956 and was composed of 15 governmental units in the Appleton-Neenah and Oshkosh Urbanized Areas. The Northeastern Wisconsin Regional Planning Commission (NEWRPC) formed in 1962 and was composed of nine counties encompassing the Wolf River Basin. With the issuance of the U.S. Department of Housing and Urban Development's (HUD) Areawide Planning Organization (APO) and Areawide Principal Jurisdiction (APJ) certification requirements in July 1970, these two agencies were dissolved and replaced by ECWRPC. The three northern counties of NEWRPC were removed from the region and Calumet, Fond du Lac, Green Lake, and Marquette counties were added to ECWRPC.



East Central builds relationships and cooperative, visionary growth strategies to keep our region beautiful, healthy, and prosperous.
-ECWRPC Mission

East Central effectively and efficiently develops, administers, and implements valued planning programs at the regional and local level, enhancing our communities' quality of life.
-ECWRPC Vision

East Central Table of Organization



COMMISSION REORGANIZATION

Core Program Areas

- Regional Comprehensive Plan
- Economic Development Program
- Sewer Service Area Planning/Water Quality Management Program
- Transportation Program

Additional Programs

- NR-135 Non-Metallic Reclamation Mining Program
- Open Space & Recreation Planning
- GIS Data Analysis & Visualization
- Local Contracts

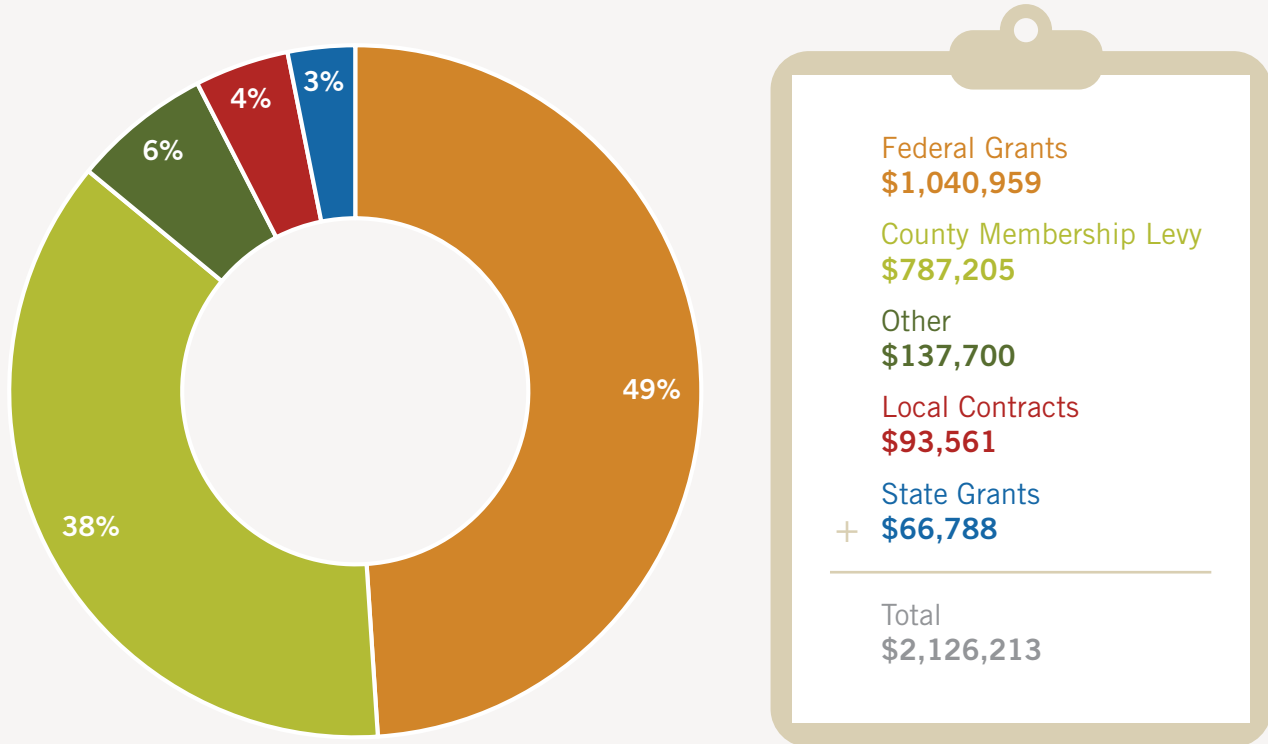
2020-2021 Agency Overview

ECWRPC is an advisory planning agency currently serving ten counties in Northeastern Wisconsin, eight of which are members of the Commission. In April of 2020, the Commission Board approved a three-year reorganization plan that prioritizes the core program areas of the Commission. The core program areas were identified by the Commissioners, the county staff, and local communities as highly valued programs by these stakeholders.

As part of this reorganization plan, auxiliary programs, such as Open Space and Recreation, will be streamlined and will work towards a self-sustaining model. The Commission aligned the reorganization plan, the strategic plan, and the work program and budget to these core program areas.

The Commission also aligned the agency's staffing needs with the reorganization plan, the strategic plan, and the work program.

2020 Operating Revenue Sources



COMMISSION FINANCIALS

Audited Statement of Net Position, 12/31/2020

| | |
|--|--------------------|
| Total Assets | \$1,083,863 |
| Deferred Outflows <i>Pension and OPEB</i> | \$637,197 |
| Total Liabilities | \$407,165 |
| Deferred Inflows <i>Pension and OPEB</i> | \$792,096 |
| Total Net Position | \$521,799 |

Audited Statement of Revenues, Expenses, and Changes in Net Position, 12/31/2020

| | |
|--------------------------------|--------------------|
| Total Operating Revenues | \$2,126,213 |
| Total Operating Expenses | \$1,987,892 |
| Operating Loss | \$138,321 |
| Total Non-Operating Revenue | \$722 |
| Net Position - 01/01/2020 | \$382,756 |
| Net Position - 12/31/2020 | \$521,799 |
| Change in Net Position | \$139,043 |

2020-2021 STANDING COMMITTEE APPOINTMENTS

Steering Committee

| | |
|-----------------|--------------------|
| Alice Connors | Calumet County |
| Martin Farrell* | Fond du Lac County |
| Jeremy Johnson | Menominee County |
| Jeff Nooyen** | Outagamie County |
| Tom Kautza | Shawano County |
| Dick Koeppen | Waupaca County |
| Donna Kalata | Waushara County |
| David Albrecht | Winnebago County |

Regional Comp. Planning Committee

| | |
|---------------|------------------|
| David DeTroye | Calumet County |
| Merlin Gentz* | Calumet County |
| Nadine Miller | Outagamie County |
| Mike Thomas** | Outagamie County |
| Vacant | Waushara County |
| Lori Palmeri | Winnebago County |

Transportation Committee

| | |
|-----------------|--------------------|
| Brian Kolstad | Fond du Lac County |
| John Zorn | Fond du Lac County |
| Kara Homan | Outagamie County |
| Jeff Nooyen* | Outagamie County |
| Steve Gueths | Shawano County |
| Tom Kautza** | Shawano County |
| Dick Koeppen | Waupaca County |
| Donna Kalata | Waushara County |
| Robert Keller | Winnebago County |
| Ron McDonald | Transit Rep. |
| Jill Michaelson | WisDOT Rep. |

Economic Development Committee

| | |
|-----------------|--------------------|
| Alice Connors** | Calumet County |
| Allen Buechel | Fond du Lac County |
| Ruth Winter | Menominee County |
| Jake Woodford | Outagamie County |
| Vacant | Shawano County |
| Brian Smith | Waupaca County |
| Mark Harris | Winnebago County |

Community Facilities Committee

| | |
|--------------------|--------------------|
| Chuck Hornung | Fond du Lac County |
| Brenda Schneider** | Fond du Lac County |
| James Lowey | Menominee County |
| David Albrecht | Winnebago County |
| Ernie Bellin* | Winnebago County |

Open Space/Env. Management Committee

| | |
|---------------------|------------------|
| Nick Kesler | Calumet County |
| Jeremy Johnson | Menominee County |
| Lee Hammen | Outagamie County |
| DuWayne Federwitz* | Waupaca County |
| Larry Timm | Waushara County |
| Robert Schmeichel** | Winnebago County |

* Committee Chair, ** Committee Vice-Chair

STATE OF THE REGION



Source: ESRI Business Analyst, 2020

10
COUNTIES

27
CITIES

57
VILLAGES

155
TOWNS

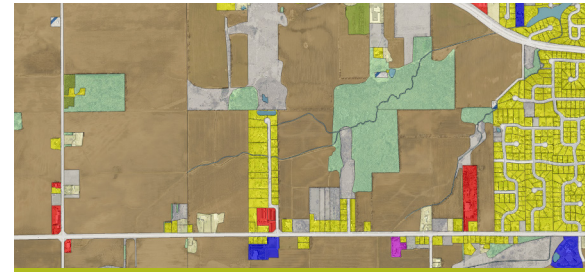
5,689
SQ. MILES

COMPREHENSIVE PLANNING

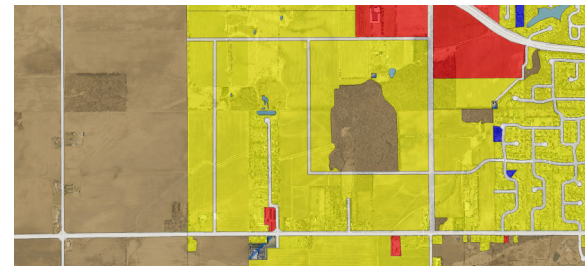
Wisconsin State Statutes § 66.1001 requires that land use decisions must be based on an adopted comprehensive plan. This applies to any and all levels of government within the State of Wisconsin that wish to exercise any land use regulatory powers. In 2020 and 2021, the Commission assisted eight local jurisdictions with updating their comprehensive plans.

Regional Comprehensive Plan

Based on the Wisconsin State Statutes § 66.309(10), the Commission is required to adopt a master plan for the region. The master plan will guide the Commission with deliverables and projects for the communities. ECWRPC last updated their Regional Comprehensive Plan in 2008. In the winter of 2020, staff began to update regional GIS datasets in preparation for the Regional Comprehensive Plan update. The Regional Comprehensive Plan will be a major work effort for the Commission in 2021 and 2022.



Current Land Use: GIS Snapshot

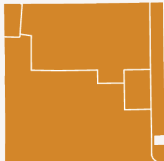


Future Land Use: GIS Snapshot

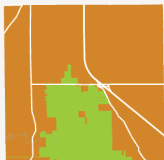
Comprehensive Plans Completed in 2020



Town of Algoma
Winnebago County
10.3 Square Miles
Population 6,939

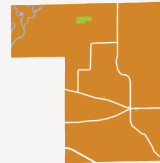


Town of Alto
Fond du Lac County
36.2 Square Miles
Population 1,072



Town of Eldorado
Fond du Lac County
36.2 Square Miles
Population 1,468

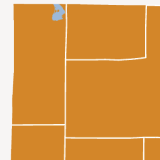
Comprehensive Plans in Progress for 2021



Town of Caledonia
Waupaca County
28 Square Miles
Population 1,700



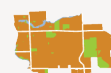
Village of Combined Locks
Outagamie County
1.9 Square Miles
Population 3,592



Town of Lessor
Shawano County
36.1 Square Miles
Population 1,281



Village of North Fond du Lac
Fond du Lac County
2.1 Square Miles
Population 5,181



City of Shawano
Shawano County
6.9 Square Miles
Population 9,129

The Commission is currently developing an updated comprehensive plan for the entire East Central region.

Source: Wisconsin Dept. of Administration 2020 population projections

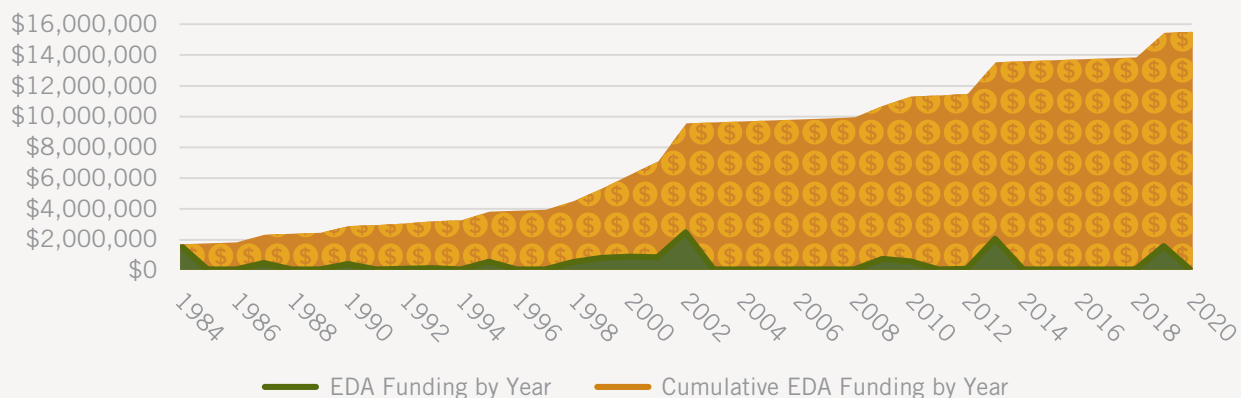
ECONOMIC DEVELOPMENT



The Commission's Economic Development Program is primarily funded through the U.S. Department of Commerce - Economic Development Administration (EDA). The Commission serves as the federally-designated Economic Development District for the region, which grants the region eligibility for funding from EDA. To promote strategic investments, Commission staff prepare a Comprehensive Economic Development Strategy (CEDS) for the region with major updates occurring every five years. The Commission also prepares an annual report detailing CEDS activity in the years without a major update. The last major update to the CEDS took place in 2018. The Commission approved an annual report on the CEDS on October 31, 2020.

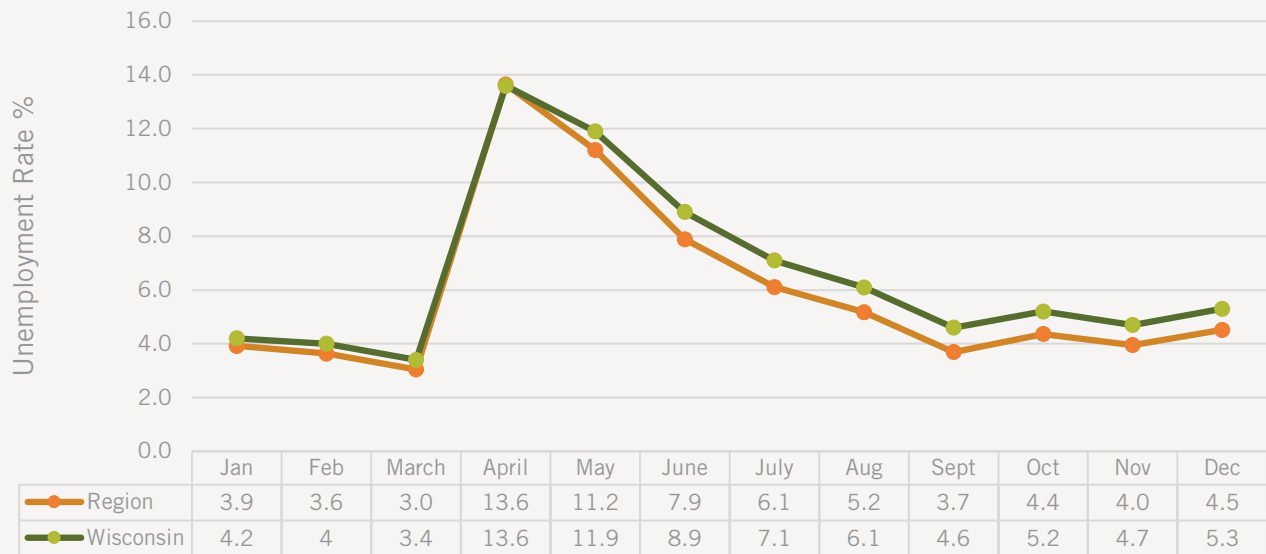
East Central staff continued to support economic development efforts throughout 2020 by participating in the Fox Cities Economic Development Professionals (FCEDP), the Northeast Wisconsin Regional Economic Development Partnership (NEWREP), the New North Business Intelligence Committee (BIC), the Greater Oshkosh Weekly Partners, and other economic development organizations. In addition, staff conducted a range of activities as various assistance is provided every year through this program.

EDA Investments in the East Central Region since 1984



The Commission receives planning grants from EDA that enable Commission staff to conduct planning, outreach, and other economic development related activities. The grants operate on a three-year cycle. In 2020, Commission staff successfully reapplied for a \$210,000 planning partnership grant that will fund planning activities in 2021-2023. Above is a graph detailing EDA investment in the East Central region as a result of East Central's status as an Economic Development District.

2020 Unemployment Rates in the East Central Region & the State of Wisconsin



ECONOMIC DEVELOPMENT & COVID-19

CARES Act Funding

The COVID-19 pandemic drastically impacted the Commission's Economic Development Program in 2020. East Central staff provided strategic assistance as many of our communities worked to address COVID-19 and plan for the recovery. Staff compiled a list of state and federal funding resources, coordinated efforts with communities and organizations, and provided data for grant applications that will help accelerate the recovery regionally. Commission staff supported the development of six applications for EDA funding to address the effects of COVID-19 in 2020.

\$400,000
CARES ACT
GRANT RECEIVED
FROM THE U.S.
ECONOMIC
DEVELOPMENT
ADMINISTRATION

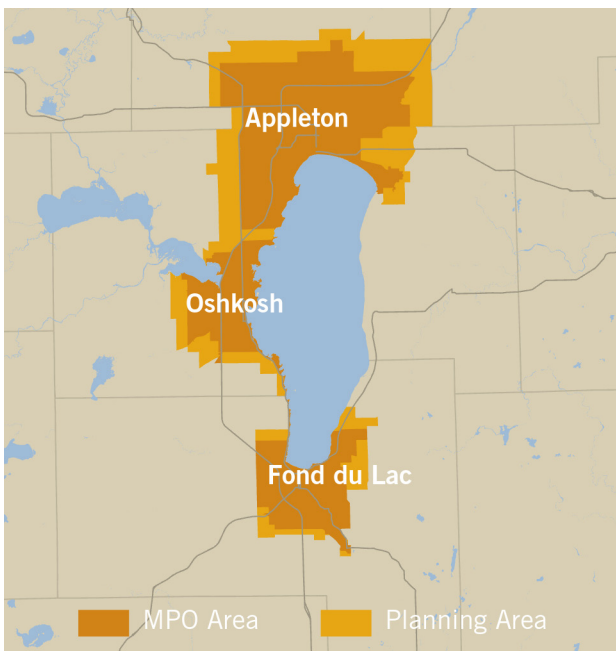
In addition to supporting communities throughout the region, East Central staff sought and received a \$400,000 grant from EDA to conduct planning to address the impacts of COVID-19. In 2021-2022, Commission staff will be developing a disaster recovery and economic resiliency plan for the East Central region. This economic resiliency plan will detail the regional economic impact of COVID-19 and make recommendations for more robust future regional development. Staff will also be developing a technical assistance program to help businesses and communities that continue to be impacted economically from COVID-19 as well as a continuity plan for East Central operations.

URBAN TRANSPORTATION PLANNING

The Commission acts as the Metropolitan Planning Organization (MPO) for the Appleton (Fox Cities TMA) and Oshkosh Urbanized Areas and serves as staff of the Fond du Lac MPO Urbanized Area. A number of activities were conducted in 2020 associated with this program, including:

- Completion and adoption of updates to the Long Range Transportation/Land Use Plans for each MPO through collaborative processes. Staff held virtual input sessions due to safety protocols. These 5-year plan updates were adopted in October 2020 for all MPOs.
- Development of the 2021 Transportation Improvement Programs (TIP) for the Appleton (Fox Cities), Oshkosh, and Fond du Lac Urbanized Areas. This program allocates federal and state funding to road and street improvement projects within the MPOs. The Commission continues to work with the Wisconsin Department of Transportation Northeast Region and communities with several ongoing STP-Urban projects.

MPOs in the East Central Region



Ongoing STP-Urban Projects

Appleton MPO

Town of Buchanan

Emons Road

Federal funding: \$2,084,806

City of Menasha

Racine Street

Federal funding: \$3,691,143

City of Neenah

Commercial Street

Federal funding: \$5,668,568

Outagamie County

CTH N

Federal funding: \$3,441,062

Winnebago County

CTH P

Federal funding: \$5,137,610

Oshkosh MPO

Town of Algoma

Omro Road

Federal funding: \$2,510,072

Winnebago County

CTH I

Federal funding: \$1,279,317

Fond du Lac MPO

City of Fond du Lac

Military Road

Federal funding: \$1,849,864

Fond du Lac County

Pioneer Avenue (CTH VV)

Federal funding: \$1,185,640

RURAL TRANSPORTATION PLANNING

The Commission assists numerous local governments within the rural portions of the region with both short and long-term transportation planning projects and infrastructure management tools. Highlights of this work in 2020 include completing a county-wide sign inventory for the Calumet County Highway Department.

Trail Wayfinding

This past year, several trails in the region have seen a significant upgrade with the addition of new wayfinding signage. The WIOUWASH (Outagamie and Winnebago counties) and Newton Blackmour (Outagamie County and New London) state trails are joined by the Solomon Trail (New Holstein and Kiel) in adding bicycle and pedestrian wayfinding signage. The signs along these three trails include a mix of kiosks, mile markers, and intersection signage, all intended to make navigating our trail systems easier for bicyclists and pedestrians. These trail enhancements were made possible through funding from Ascension, collaboration with county and municipal stakeholders and the Wisconsin Department of Natural Resources, and guidance from the East Central Trail Wayfinding Guidebook.



Regional Transportation Facilities



14,743
Road Miles



553
Trail Miles



1,272
Public Bus Stops



482
Bike Lane Miles
(both sides of street)

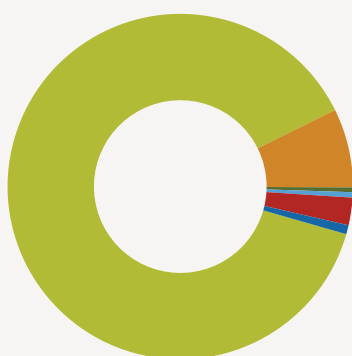


2,113
Sidewalk Miles
(both sides of street)

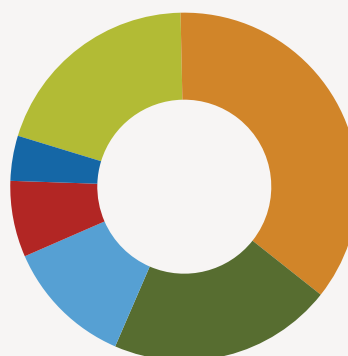


324
Public Bus Line Miles

Transportation to Work in the East Central Region Travel Time to Work in the East Central Region



Drove Alone: 88%
286,321 people
Carpooled: 7%
23,982 people
Bus: <1%
1,439 people
Bicycle: 1%
1,621 people
Walking: 3%
8,367 people
Other: 1%
2,735 people



0-9 minutes: 20%
64,690 people
10-19 minutes: 36%
116,820 people
20-29 minutes: 21%
67,633 people
30-39 minutes: 12%
38,798 people
40-59 minutes: 7%
22,981 people
60+ minutes: 4%
13,580 people

Source: 2015-2019 ACS. Data gathered prior to COVID-19 pandemic and may not reflect current transportation trends.



ALTERNATIVE TRANSPORTATION

Active Transportation

Studies conducted throughout the United States show an increase in walking and bicycling since the onset of the COVID-19 pandemic. To see what is happening locally, East Central Wisconsin Regional Planning Commission contracted with UW-Oshkosh's Center for Customized Research and Services to conduct a survey of community members on their walking and bicycling habits since the onset of COVID-19. With over 300 responses, this survey confirms that people are indeed walking and bicycling more, with nearly 50% of the respondents stating they are putting on more miles than in previous years.

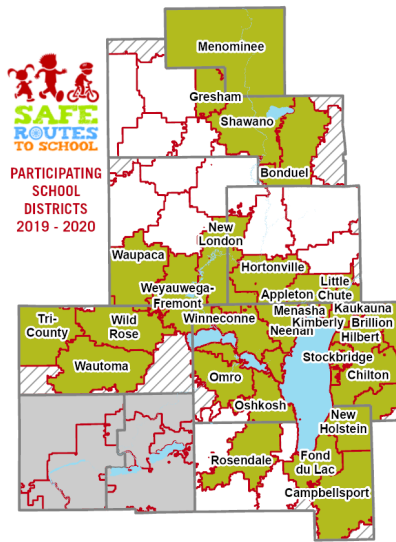
In addition to the survey, bicycle and pedestrian counters were used to look for patterns in trail usage, and the preliminary trail count data examined also shows an overall increase in trail usage. This data confirms what we are seeing and anecdotally hearing in our communities. Our region has a variety of places where people can escape to the outdoors during the pandemic, and people are using their time to explore these trails.

Mobility Management

Regional Mobility Management aims to improve specialized transportation communication for everyone, meeting the diverse needs of veterans, older adults, people with disabilities, and individuals with lower incomes, as well as organizations such as hospitals and clinics, employers, transit systems, shared-ride van/car networks, health departments, schools, and nonprofits. Looking beyond each siloed transportation service to an interconnected network offering a simplified user interface and fare payment system to meet an array of community demographics and needs, mobility management can streamline coordination of trips and bridge gaps.

COMMUNITIES IN EAST
CENTRAL WISCONSIN NEED A
TRANSPORTATION STRATEGY
THAT FOCUSES ON WHERE
COMMUNITY MEMBERS ARE
AND WHERE THEY NEED TO GO.
THIS STRATEGY MUST BE
INTERCONNECTED, EQUITABLE,
EASY-TO-ACCESS, COST-
EFFECTIVE, RELIABLE, AND
SUSTAINABLE.

SAFE ROUTES TO SCHOOL



The Regional Safe Routes to School program engages and empowers schools and communities to foster healthy lifestyles through environmental changes and safe walking and bicycling. Due to the COVID-19 pandemic, working toward this mission looked a little different this year. Schools had to adapt to virtual and hybrid learning models, which meant that the Safe Routes to School program had to adapt too. Events and programs were modified to encourage students to be active through walking and bicycling in a socially distanced way.

150 schools in 29 school districts are currently participating in the Regional Safe Routes to School program.

31 schools participated in Bike to Anywhere Day on May 6th, 2020.

Students were encouraged to ride their bicycle anywhere in the community this year. Students took pictures and sent them to their teachers to create a collage of students who “biked to school” together.



49 schools participated in Walk to School Day on October 7th, 2020.

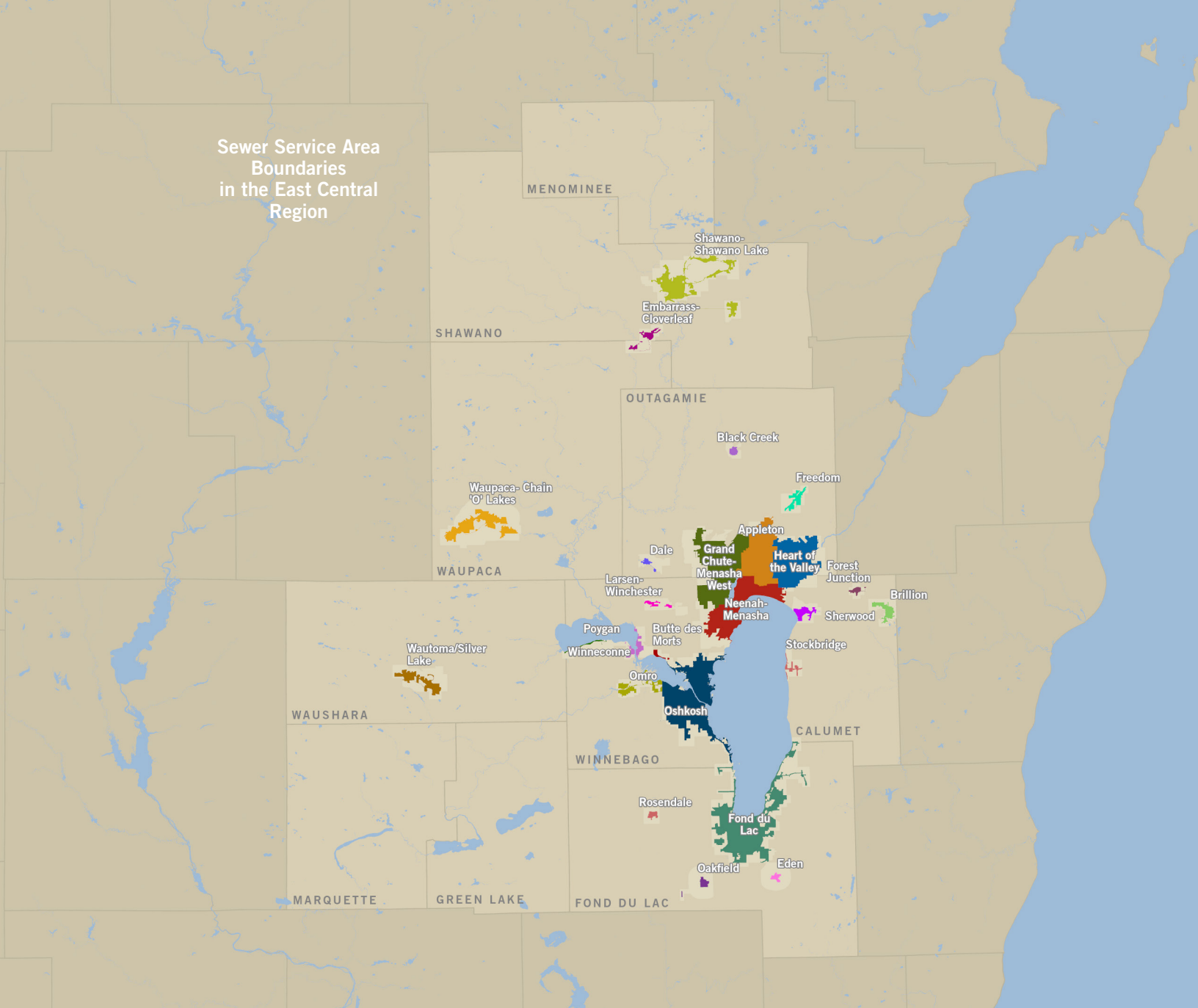
The Regional Safe Routes to School program celebrated Walk to School Day by hosting a community scavenger hunt in all eight counties throughout the region. The Safe Routes logo was spray chalked throughout communities and students were encouraged to get outside for a walk to find the logos.



31 schools participated in Winter Walk to School Month in February 2021.

Schools were encouraged to host a Winter Walk to School Month event and participate in the weekly walking challenges.





COMMUNITY FACILITIES PLANNING

- 12** SANITARY LATERAL REVIEWS
- 37** PUBLIC SANITARY REVIEWS
- 2** SUBDIVISION REVIEWS
- 5** SEWER SERVICE AREA AMENDMENTS
- 48** CONFORMANCE REVIEWS

Sewer Service Area Planning

The Commission administers the State of Wisconsin's NR-121 Sewer Service Area (SSA) Planning Program under a memorandum of agreement and contract with the Wisconsin Department of Natural Resources (WDNR). The Commission staff and Community Facilities Committee serve as review entities for, and advisors to, the WDNR for the development of twenty-five separate SSA plans and subsequently requested SSA boundary amendments. The Commission also conducts plan conformance reviews on certain activities related to wastewater treatment and sewer infrastructure planning and construction.

ENVIRONMENTAL PLANNING

NR-135 Non-Metallic Mining Reclamation

The NR-135 Non-Metallic Mining Reclamation Program is a state-mandated rule (Chapter NR-135 Wis. Adm. Code) passed in December 2000. The goal of NR-135 is to provide a framework for statewide regulation of non-metallic mining reclamation. This is accomplished by establishing uniform reclamation standards and requiring counties to adopt a reclamation ordinance capable of ensuring compliance with these standards. ECWRPC, through a cooperative agreement signed in July 2001, administers these ordinances on behalf of four counties (Outagamie, Shawano, Waupaca, and Winnebago). Administration activities include reclamation plan reviews, permit approvals, site inspections, operator and Wisconsin Department of Natural Resources (WDNR) annual reporting, operator financial assurance requirements, and certifying completed reclamation activities.

The program is self-funded by the operators based on the amount of acreage considered active. The acreage fees are reviewed annually to equal the cost to administrate the program. The budget is approved annually by the counties. The Commission met with the county planning directors this year and will provide quarterly updates to the counties to ensure operator compliance with the ordinance.

2020 Mining Reclamation Sites



Before Reclamation



After Reclamation

FLB Quarry, Town of Algoma



Before Reclamation



After Reclamation

Bartels Pit, Town of Scandinavia

RECREATION PLANNING



The main focus of the Open Space and Recreation program is to improve the quality of life and provide healthy spaces for residents and visitors to recreate. Evidence has shown that parks and open space provide many benefits to a community. These benefits include increased individual health, economic growth, and cleansing of the natural environment through green spaces.

The Commission assists local communities with their Comprehensive Outdoor Recreation Plan (CORP) updates to protect, preserve, and enhance the environment now and for future generations. These plans must be completed every five years to be eligible for Wisconsin Department of Natural Resources Stewardship grants and other funding for improvements. They are critical documents that typically include geography, demographics, current conditions inventory, needs assessments for facilities both today and tomorrow, safe access to parks (audits), goals, objectives, and a five-year action plan for implementation strategy.

County and local units of government have obtained **over \$20.4 million** worth of Wisconsin Department of Natural Resources grants over the last five years.

CORP Plans Completed in 2020



City of New London
Outagamie & Waupaca Counties
16 parks, 282 acres
Population 7,595
37 acres of green space per 1,000 residents



City of Waupaca
Waupaca County
16 parks, 265 acres
Population 6,320
42 acres of green space per 1,000 residents



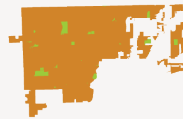
Village of Hortonville
Outagamie County
9 parks, 46 acres
Population 2,895
16 acres of green space per 1,000 residents



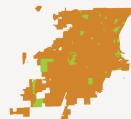
Village of Mattoon
Shawano County
3 parks, 16 acres
Population 435
37 acres of green space per 1,000 residents

Source: Wisconsin Dept. of Administration 2020 population projections

CORP Plans in Progress for 2021



Village of Fox Crossing
Winnebago County
21 parks, 261 acres
Population 20,070
13 acres of green space per 1,000 residents



City of Neenah
Winnebago County
26 parks, 391 acres
Population 26,990
14 acres of green space per 1,000 residents

Recreational standards recommend 10 acres of parkland for every 1,000 residents in the municipality. On average, 11 miles of trails are maintained or managed by a park and recreation department in the East Central Region.

2021 Staff



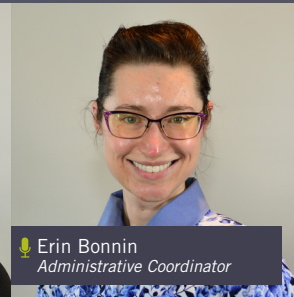
🎤 Melissa Kraemer-Badtke
Executive Director/MPO Director



🎤 Kevin Englebert
Assistant Director



🎤 Sarah Otting
Controller



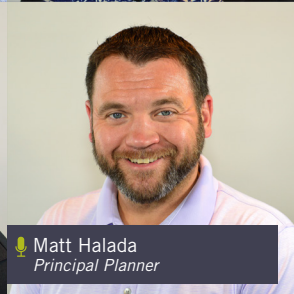
🎤 Erin Bonnin
Administrative Coordinator



🎤 Trish Nau
Principal Planner



🎤 Todd Verboomen
Principal Planner



🎤 Matt Halada
Principal Planner



🎤 Tim Badtke
IT Manager



🎤 Dave Moesch
Associate Planner



🎤 Kim Biedermann
Associate Planner



🎤 Adam Bellcorelli
Associate Planner



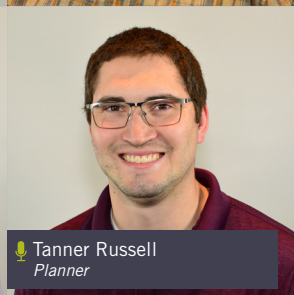
🎤 Scott Konkle
Planning/GIS Planning Specialist



🎤 Ashley Tracy
Associate Planner



🎤 Wilhelmina Paustian
Planner



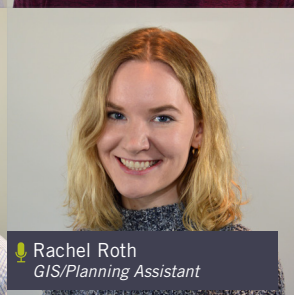
🎤 Tanner Russell
Planner



🎤 Michael Zuege
GIS Manager



🎤 Adam Pfefferle
GIS Planning Specialist II



🎤 Rachel Roth
GIS/Planning Assistant

✕ Chat

We wish a happy retirement to Walt Raith and Pam Scheibe-Johnson!

Enter your message





EAST CENTRAL
WISCONSIN REGIONAL
PLANNING COMMISSION



400 AHNAIP STREET, SUITE 100
MENASHA, WISCONSIN 54952-3100
PHONE (920) 751-4770
www.ecwrpc.org

The East Central Wisconsin Regional Planning Commission's planning program is supported by federal assistance. Specific funding for this report was provided by the Federal Highway Administration, Federal Transit Administration, the Wisconsin Department of Transportation, the Economic Development Administration, Wisconsin Department of Administration and the Wisconsin Department of Natural Resources. The contents of this document do not necessarily reflect the views and policies of the U.S. Department of Transportation, Federal Highway Administration, or Federal Transit Administration.