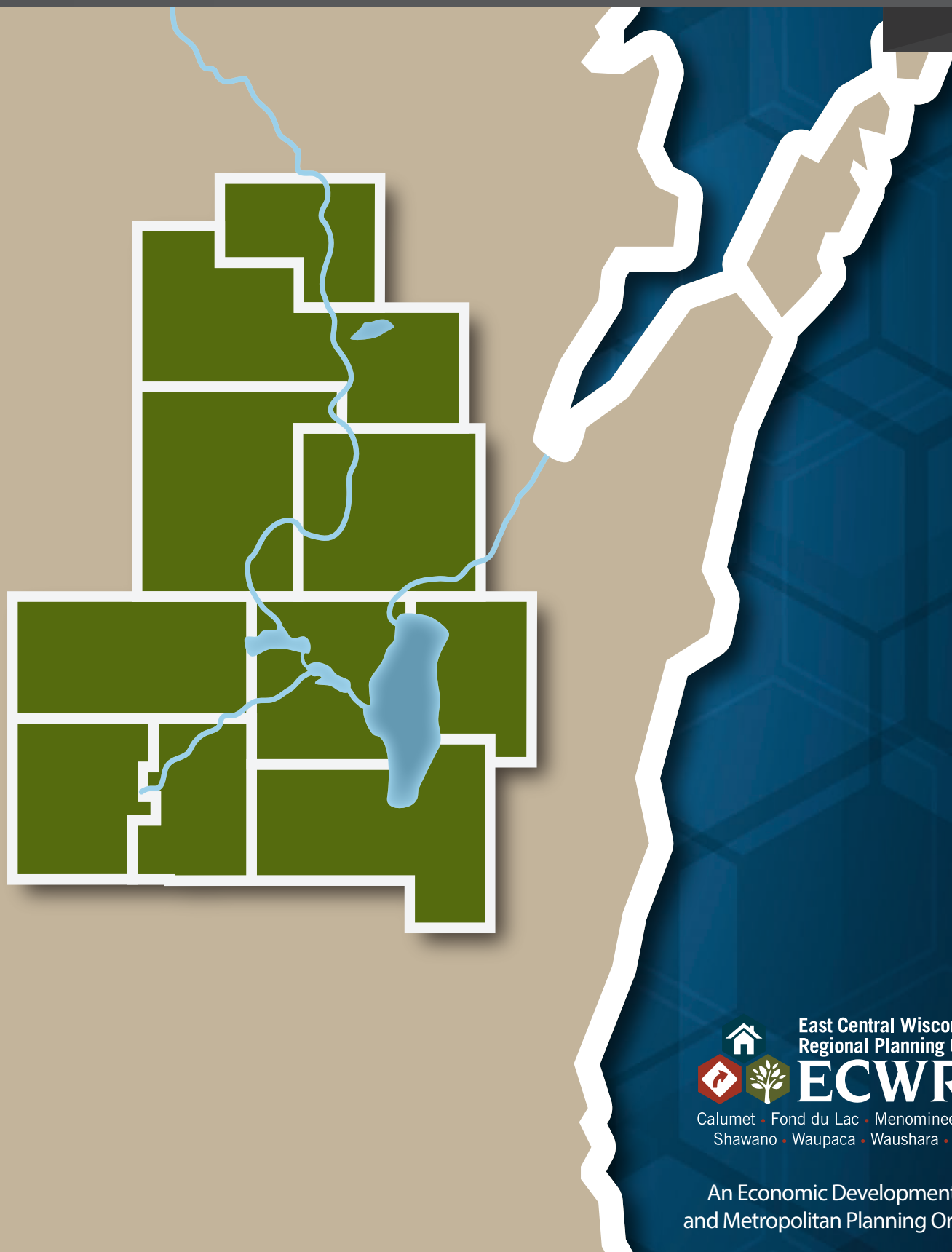




East Central Wisconsin Regional Planning Commission

Annual Report 2019 - 2020



2019 Roster of East Central Counties and Commissioners

Menominee County

Laure Pecore, County Board Chair
(Perm. Alt. – **Jeremy Johnson**)
James Lowey, County Board Supervisor
Ruth Winter, Gubernatorial Appointee

EX-OFFICIO MEMBERS

Jill Michaelson, WisDOT Northeast
Region, State Representative
Ron McDonald, General Manager Valley
Transit, Public Transportation Representative

Shawano County

Jerry Erdmann, County Board Chair
Tom Kautza, County Board Supervisor
Chuck Dallas, Gubernatorial Appointee

Waupaca County

Dick Koeppen, County Board Chair
Brian Smith, Mayor, City of Waupaca
James Nygaard, County Board Supervisor
DuWayne Federwitz, Gubernatorial Appointee

Outagamie County

Jeff Nooyen, County Board Chair
Thomas Nelson, County Executive
(Perm. Alt. – **Kara Homan**)
Timothy Hanna, Mayor, City of Appleton
Daniel Rettler, County Board Supervisor
Kevin Sturn, County Board Supervisor
Michael Thomas, Gubernatorial Appointee

Waushara County

Donna Kalata, County Board Chair
Larry Timm, County Board Supervisor
Neal Strehlow, Gubernatorial Appointee

Winnebago County

Shiloh Ramos, County Board Chair
(Perm. Alt. - **David Albrecht**)
Mark Harris, County Executive
Lori Palmeri, Mayor, City of Oshkosh
Ken Robl, County Board Supervisor
Ernie Bellin, Gubernatorial Appointee
Robert Schmeichel, Town of Neenah
Chairman

Calumet County

Alice Connors, County Board
Chair
Hope Karth, County Board
Supervisor
Rick Jaeckels, Mayor, City of
Chilton
Merlin Gentz, Gubernatorial
Appointee

Marquette County

Withdrew from participation
January 1, 2002. No
individual community
members participate and no
representation is provided on
the Commission.

Green Lake County

Withdrew from
participation January 1,
1975. No
individual community
members participate
and no representation
is provided on the
Commission.

Fond du Lac County

Allen J. Buechel, County Executive
Martin Farrell, County Board Chair
Brenda Schneider, County Treasurer
Brian Kolstad, C. Fond du Lac Council Pres.
Charles Hornung, Gubernatorial Appointee

Message from the Chairman

To the Community Members and Elected Leaders of the East Central Region:

In 2019, the East Central Wisconsin Regional Planning Commission (ECWRPC) continued to support counties and local communities through technical assistance projects, comprehensive plan development and the development of their local comprehensive open space recreation plans. The Commission assisted the City of New Holstein in successfully applying for \$22,500 in Economic Development Association (EDA) funds to conduct a Market Feasibility Study for the former Tecumseh site.

Regional partnerships are essential to the success of the Commission. Last year, Calumet, Fond du Lac, and Winnebago Counties were selected to receive the Lake Michigan Stakeholders Policy Maker Champions award for their continued leadership regarding the Winnebago Waterways program.

The regional transportation network continues to grow through regionally significant projects like the I-41 expansion and the continued work of the intergovernmental committee working on improvements for State Highway 29 in Shawano County. Last year, the Appleton (Fox Cities) Transportation Management Area, Oshkosh Metropolitan Planning Organization (MPO) and the Fond du Lac MPO awarded over \$20 million in surface transportation block grant funding to local communities.

In addition, over the last two years, public private partnerships have emerged in the region through the Regional Safe Routes to School and The Bicycle and Pedestrian Wayfinding Signage Program. The Bicycle and Pedestrian Wayfinding Signage Program, in partnership with Ascension Health Care, ECWRPC, counties and local communities within the region have placed over 128 bicycle and pedestrian wayfinding signs on regional trails.

Regional partnerships, public private partnerships and increased collaboration will be essential in creating and building a stronger and more resilient region. I look forward to working with our Commission Board members and staff to continue to advance the mission and vision for our region in 2020.

Sincerely,

A handwritten signature in black ink, appearing to read "Martin Farrell", with a stylized, cursive script.

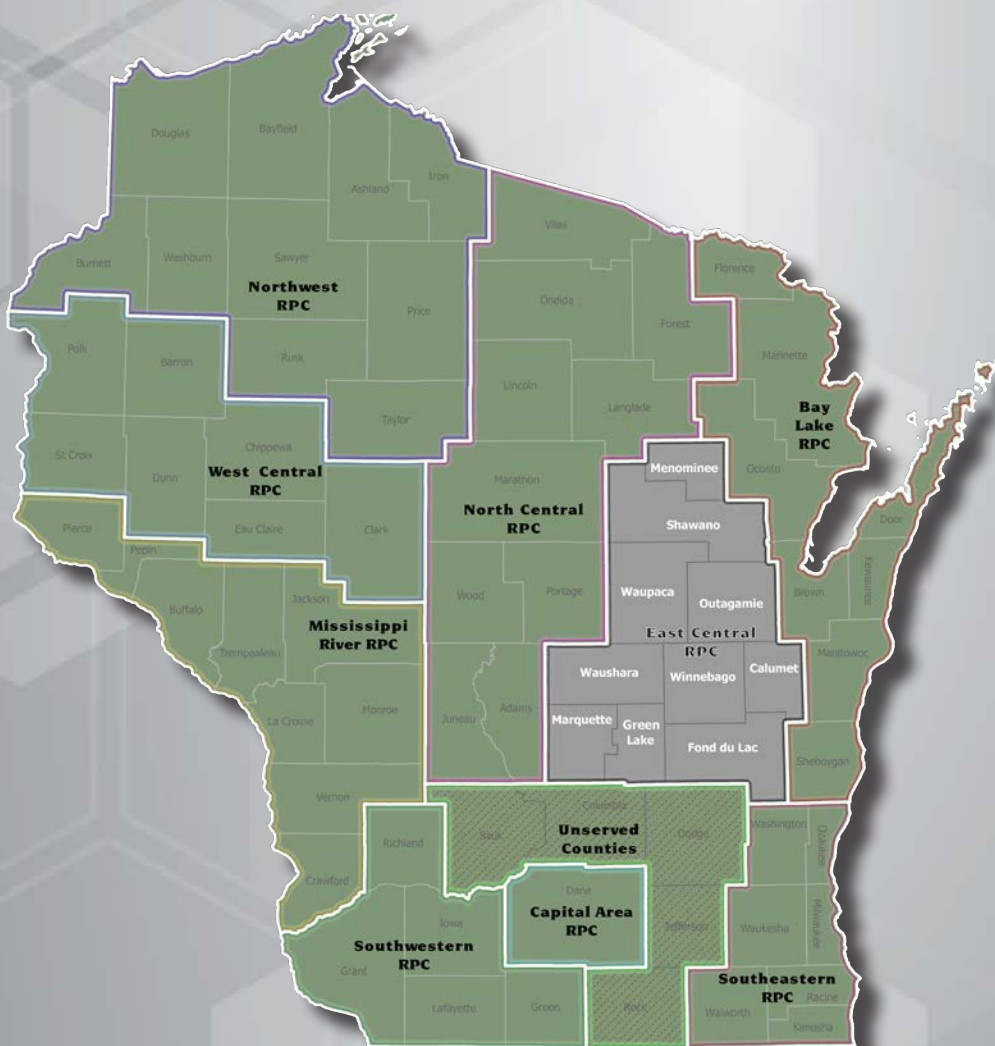
Martin Farrell, Chair
Fond du Lac County Board Chair

Commission Overview

Agency History

The East Central Wisconsin Regional Planning Commission (ECWRPC) was created under Executive Order No. 41, issued by Governor Patrick J. Lucey, dated June 29, 1972. This action was taken after the submittal of petitions by the ten counties within the East Central Region pursuant to SS. 66.945 (now SS. 66.0309), the existing regional planning enabling statute. The ECWRPC was preceded by two areawide planning agencies: the Fox Valley Council of Governments (FVCOG) formed in 1956 and was composed of 15 governmental units in the Appleton-Neenah and Oshkosh Urbanized Areas; the Northeastern Wisconsin Regional Planning

Commission (NEWRPC) formed in 1962 and was composed of nine counties encompassing the Wolf River Basin. With the issuance of the U.S. Department of Housing and Urban Development's (HUD) Areawide Planning Organization (APO) and Areawide Principal Jurisdiction (APJ) certification requirements in July 1970, these two agencies were dissolved and replaced by ECWRPC which was roughly aligned with uniform state administrative districts. The three northernmost counties of NEWRPC were removed from the region and Calumet, Fond du Lac, Green Lake, and Marquette counties were added to the south.



10
Counties

238
MCDs

5,689
Square
Miles

677,835
Total
Population

\$59,393
Median
Household
Income

Source: 2019 ESRI Business Analyst

Agency Functions

The Commission is established as an advisory planning agency with eight of its ten counties as dues paying members. Much of its work is focused within the three designated urbanized areas that lie along the Interstate 41 Corridor; however, many rural communities are assisted on a regular basis as well. A major role for the Commission is to ensure that the region's urbanized areas are in compliance with federally mandated transportation planning requirements. The Commission serves the function of being the Policy Board for the Appleton and Oshkosh Metropolitan Planning Organizations (MPOs) which were authorized by the governor in December 1973. It also staffs the Fond du Lac MPO which was designated in May 2002 when the urbanized area population

exceeded 50,000. Due to population growth exceeding 200,000 in the Appleton MSA, this MPO received Transportation Management Agency (TMA) status in 2012 (with Federal Highway Administration (FHWA) certification in 2016). These transportation planning efforts also include the implementation of a regional Safe Routes to School program. Additionally, the Commission is also a designated Economic Development District by the U.S. Department of Commerce-Economic Development Administration (EDA) and provides a water quality planning function under arrangements with the Wisconsin Department of Natural Resources. The remainder of its programs are primarily funded through the local levy charges to member counties.

Audited Statement of Net Position as of 12/31/19

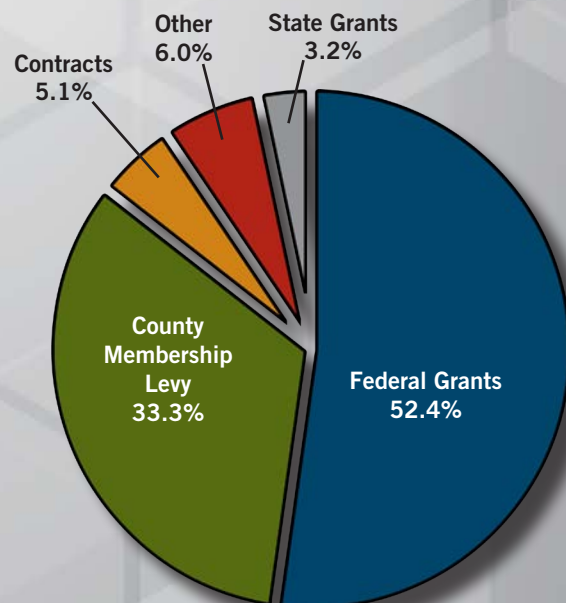
| | |
|---|-----------|
| Total Assets | \$656,803 |
| Deferred Outflows (Pension and OPEB) | \$791,063 |
| Total Liabilities | \$632,748 |
| Deferred Inflows (Pension and OPEB) | \$432,362 |
| Total Net Position..... | \$382,756 |

Audited Statement of Revenues, Expenses, and Changes in Net Position, 12/31/19

| | |
|-----------------------------------|-------------|
| Total Operating Revenues | \$2,319,532 |
| Total Operating Expenses | \$2,347,838 |
| Operating Loss | (\$28,306) |
| Total Non-Operating Revenue | \$2,389 |
| Net Position - Jan. 1, 2019 | \$408,673 |
| Net Position - Dec. 31, 2019..... | \$382,756 |
| Change in Net Position..... | (\$25,917) |

2019 Operating Revenue Sources

| | |
|------------------------------|-------------|
| Federal Grants..... | \$1,214,401 |
| County Membership Levy | \$771,753 |
| Contracts | \$119,355 |
| Other..... | \$139,382 |
| State Grants | \$74,641 |



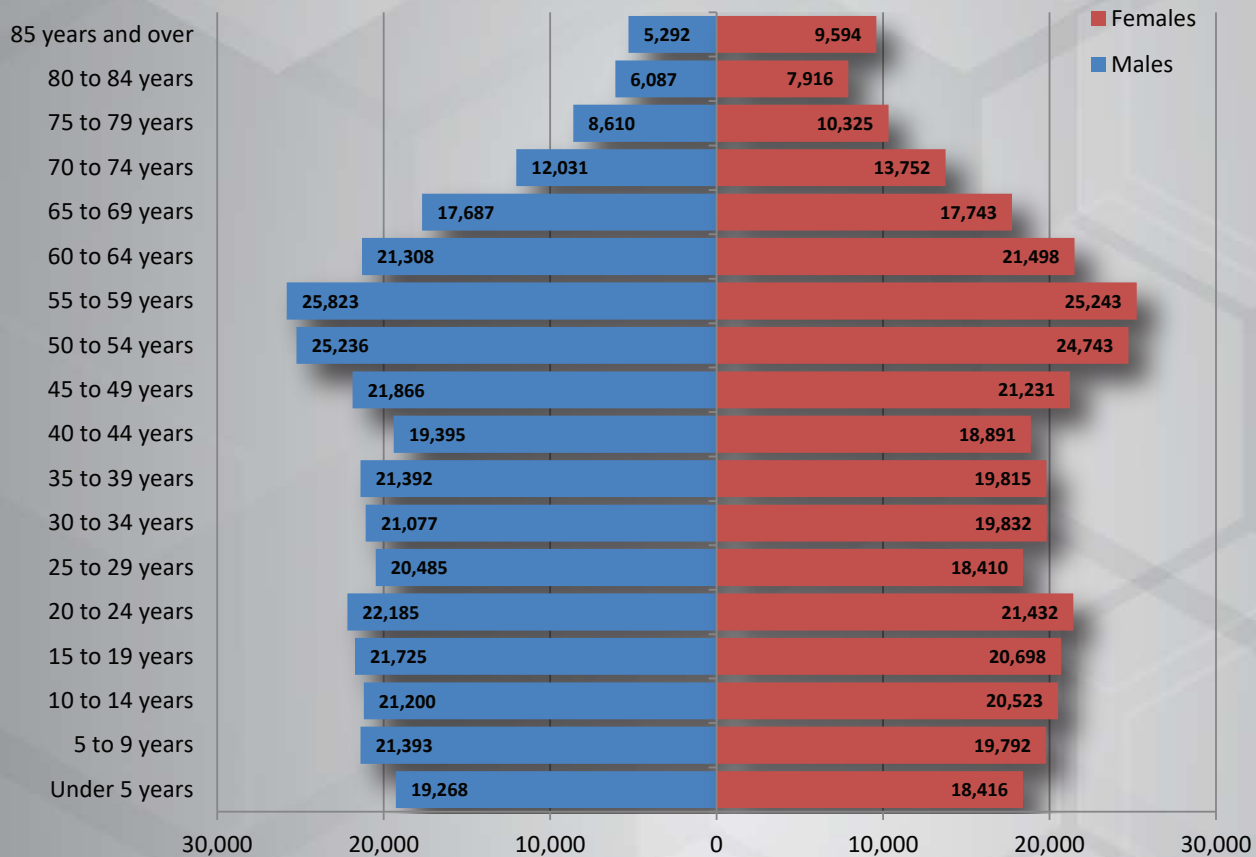
State of The Region

Key Facts & Figures



Source: 2019 ESRI Business Analyst

Population by Age Cohort Estimates



Racial Characteristics Estimates

| | Estimate | % |
|--|----------|--------|
| TOTAL POPULATION | 661,914 | 100.0% |
| One race | 650,559 | 98.3% |
| White | 606,587 | 91.6% |
| Black or African American | 9,369 | 1.4% |
| American Indian and Alaska Native | 12,186 | 1.8% |
| Asian | 14,119 | 2.1% |
| Native Hawaiian and Other Pacific Islander | 93 | 0.0% |
| Some Other Race | 8,205 | 1.2% |
| Two or More Races | 11,355 | 1.7% |
| HISPANIC OR LATINO | | |
| Hispanic or Latino (of any race) | 27,638 | 4.2% |
| Mexican | 21,937 | 3.3% |
| Puerto Rican | 2,213 | 0.3% |
| Cuban | 163 | 0.0% |
| Other Hispanic or Latino | 3,325 | 0.5% |
| Not Hispanic or Latino | 634,276 | 95.8% |

Occupancy & Vacancy Estimates

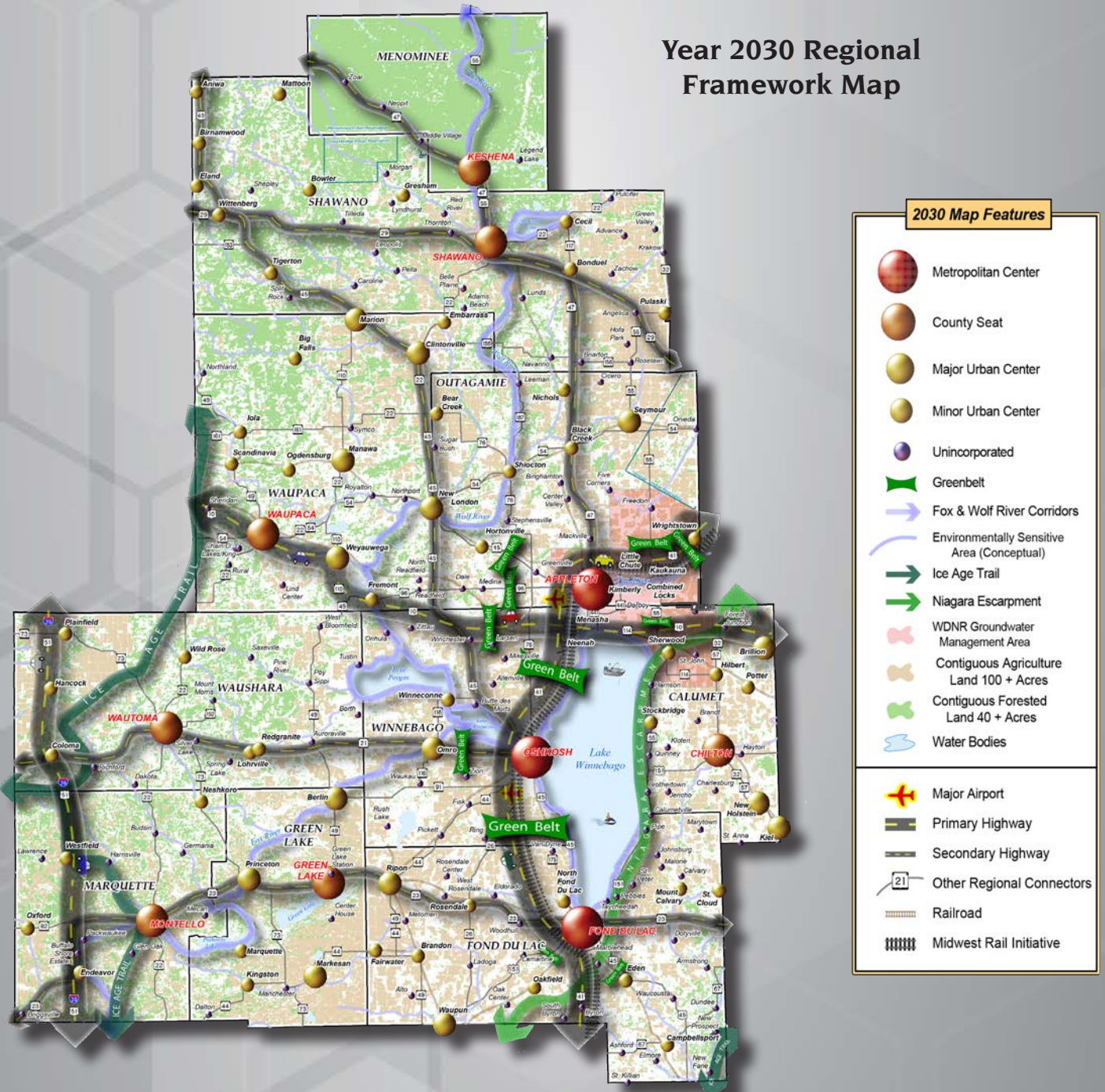
| | Estimate | % |
|-------------------------------|----------|--------|
| Total Housing Units | 301,856 | 100.0% |
| Occupied Housing Units | 268,839 | 89.1% |
| Owner Occupied | 192,018 | 63.6% |
| Renter Occupied | 76,821 | 25.4% |
| Vacant Housing Units | 33,017 | 10.9% |
| For Rent | 4,043 | 1.3% |
| Rented Not Occupied | 687 | 0.2% |
| For Sale Only | 2,991 | 1.0% |
| Sold Not Occupied | 616 | 0.2% |
| Seasonal Use | 17,743 | 5.9% |
| Migrant Workers | 75 | 0.0% |
| Other Vacant | 6,862 | 2.3% |
| Homeowner Vacancy Rate | 1.5% | - |
| Rental Vacancy Rate | 5.0% | - |

Source: 2014-2018 American Communities Survey (ACS)

Comprehensive Planning

In the fall of 1999, new statewide comprehensive planning requirements were signed into law as part of the governor's budget bill. SS 66.1001 requires that, starting in 2010, land use decisions must be based on an adopted comprehensive plan as defined in the law. This applies to any and all levels of government within the State of Wisconsin that wish to exercise any land use regulatory powers. The legislation also requires the development of a regional comprehensive plan, which was accomplished by the Commission in 2008 and is shown below. In 2019 and 2020, the Commission helped eleven (11) local jurisdictions with the process of updating their comprehensive plans under contractual arrangements as shown on the next page.

Year 2030 Regional Framework Map



ECWRPC Contract Status for Comprehensive Plans 2019-2020

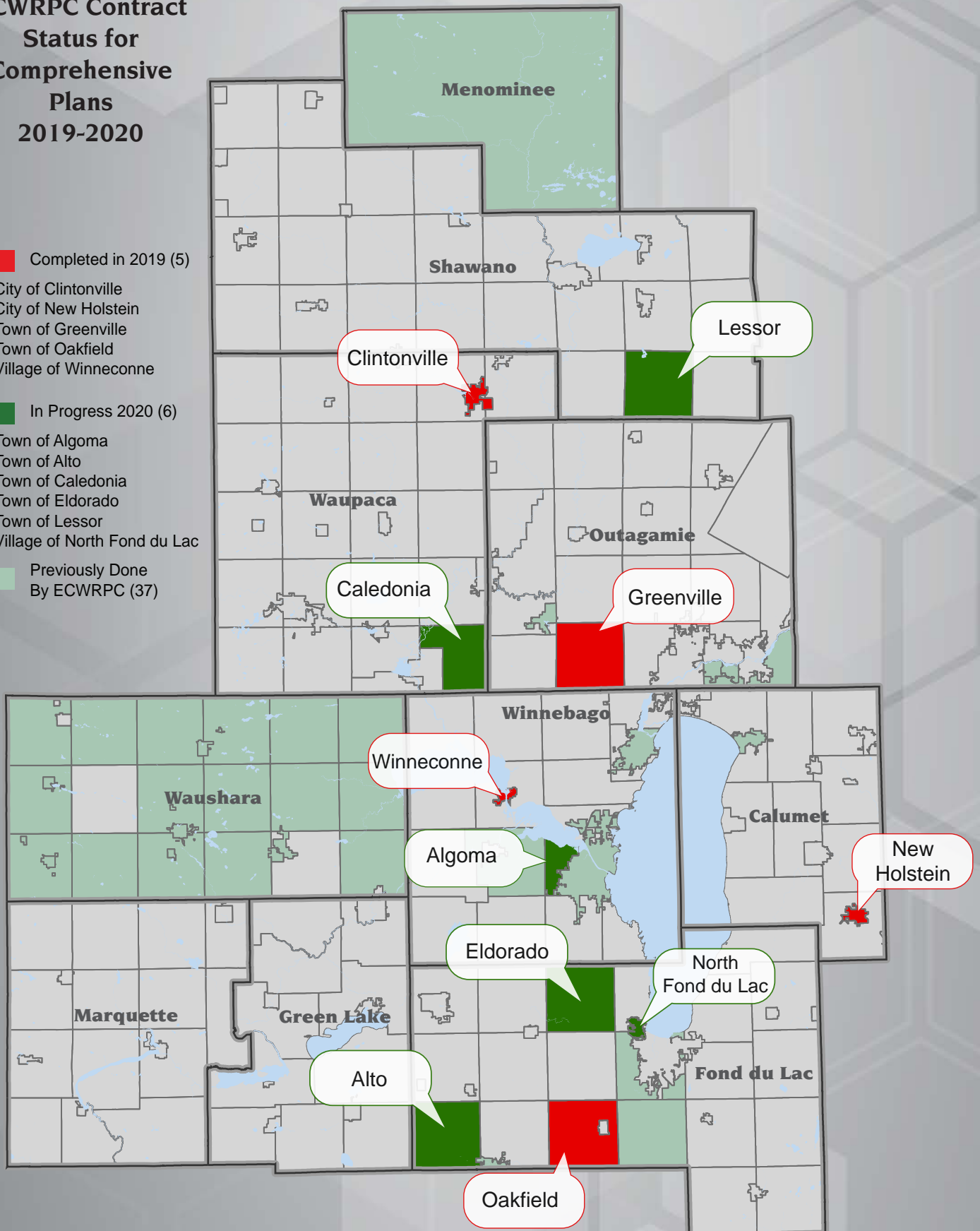
Completed in 2019 (5)

City of Clintonville
City of New Holstein
Town of Greenville
Town of Oakfield
Village of Winneconne

In Progress 2020 (6)

Town of Algoma
Town of Alto
Town of Caledonia
Town of Eldorado
Town of Lessor
Village of North Fond du Lac

Previously Done By ECWRPC (37)



Community Facilities

The viability of the region, in terms of economics and quality of life, is dependent on a highly developed infrastructure of basic community and public facilities. Existing and new developments require municipal services that are often administered at a regional scale, including the efficient removal and permanent storage of waste and recyclables; a dependable supply and efficient transmission of natural gas and electric; a fast reliable telecommunications network that employs the latest technology; a reliable system that quickly responds to fire, police and other emergency situations; and an accessible and affordable healthcare system. The Commission serves a number of roles within the management of local and regional level community facilities as shown below and on the next page.

Menasha Sustainable Committee

The Commission participates in monthly meetings of the Menasha Sustainability Committee which provides guidance in the implementation of sustainability and energy efficiencies throughout the City. Besides providing input to municipal staff on efforts to reduce energy efficiencies and other sustainable efforts; the Sustainability Committee partners with Menasha Utilities to provide two annual electronic recycling events. A current project that the committee is working on is raising awareness and providing education to residents on stormwater mitigation techniques at different locations around the City. This effort includes the reconstruction of three rain gardens, one of which is located outside of the Commission's office.



Sustainable Communities Network

The Commission assists in coordinating the quarterly meetings of the Sustainable Communities Network. The purpose of the network is to provide educational opportunities for items of joint interest, collaboration on ordinances and other items of mutual concern; and information sharing regarding projects, events and discussions that are going on in the individual member communities and other organizations. The Sustainable Communities Network is comprised of local municipal boards/committees including the Sustainability Committee of Menasha, Village of Fox Crossing Sustainability Committee, Sustainable Neenah, Sustainable Advisory Board of Oshkosh, Outagamie County Sustainability Committee and Sustain Greenville. Others that have been part of the network include a representative from the Oneida Nation, the Village of Hortonville and Evergreen Credit Union. Recent topics of discussion have included local invasive species, conversations on farmers markets, solar energy/strategic energy planning, home weatherization, green stormwater projects and dark skies.

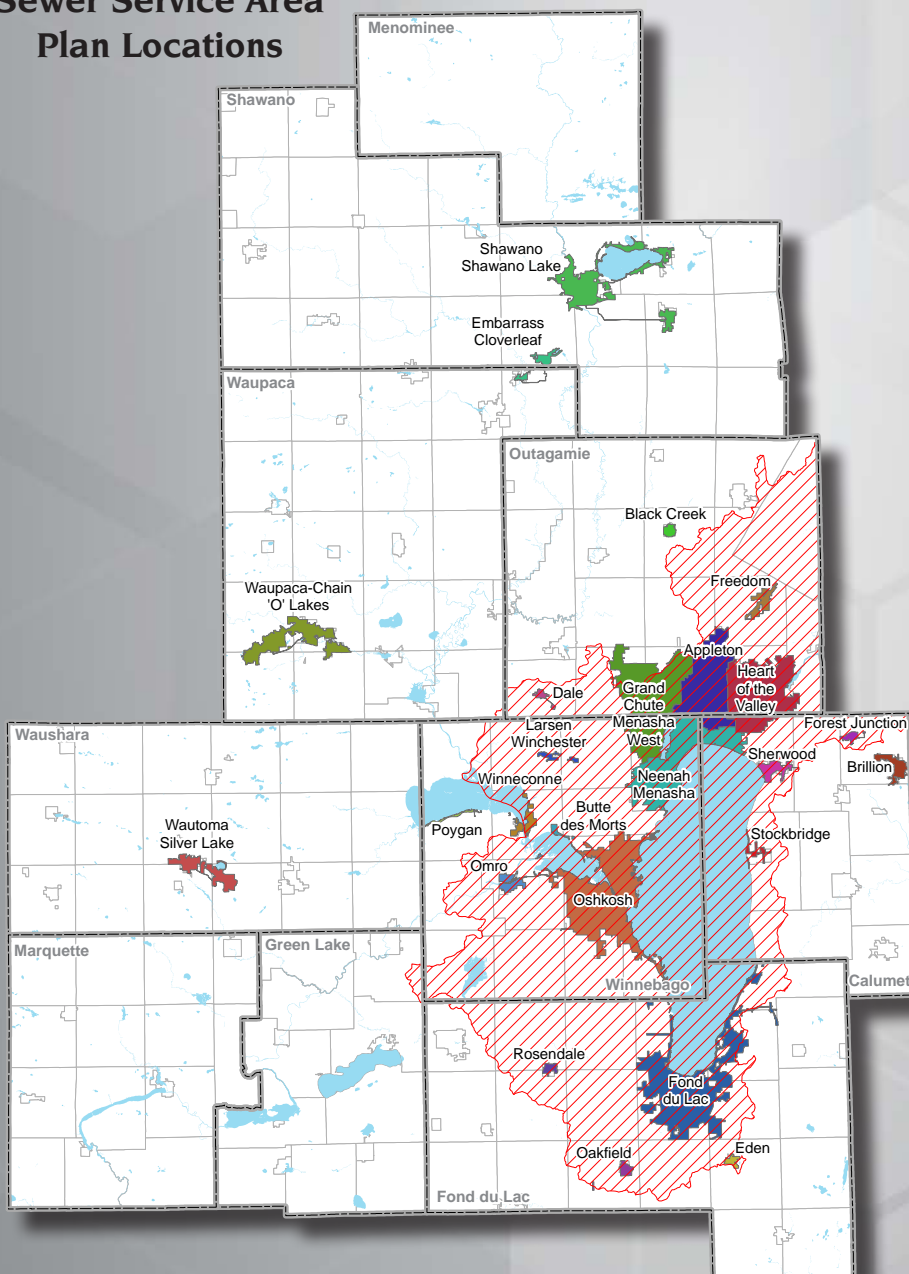
Northeast Wisconsin Sustainable Leaders Group


The Commission participates in the NE Wisconsin Sustainable Leaders Group which is comprised of a group of sustainability leaders from major companies in the greater Fox Cities and Oshkosh, universities and others. The group meets monthly to discuss efforts they are doing to affect environmental responsibility, employees and student health and supporting their local communities.

Sewer Service Area (SSA) Management

The Commission administers the State of Wisconsin's NR-121 Sewer Service Area (SSA) Planning Program under a memorandum of agreement and contract with the Wisconsin Department of Natural Resources (WDNR). The Commission staff and Community Facilities Committee serve as review entities for, and advisors to, the WDNR for the development of twenty-five separate SSA plans and subsequently requested SSA boundary amendments. The Commission also conducts plan conformance reviews on certain activities related to wastewater treatment and sewer infrastructure planning and construction.

Sewer Service Area Plan Locations



 Water Quality Management Area

69
Total
Projects
in 2019

22
Sanitary
Lateral
Reviews

44
Public Sanitary
Sewer
Extensions

3
Subdivision
Plats

5
2030 SSA
Amendment
Reviews

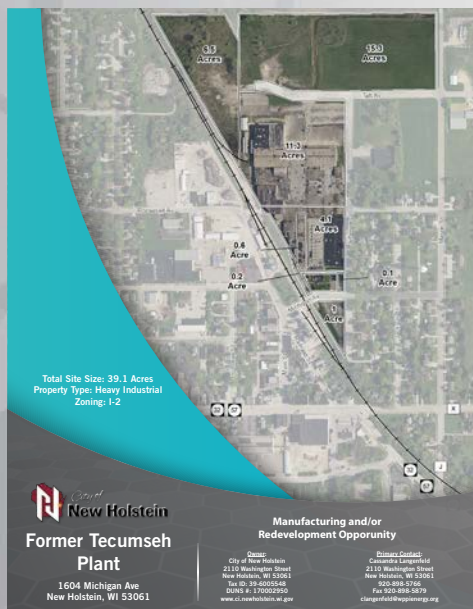
Economic Development

The Commission's Economic Development Program is partially funded through the Federal Department of Commerce, Economic Development Administration (EDA). As such, a Comprehensive Economic Development Strategy (CEDS) is prepared annually for the region. The Commission also seeks to assist communities and sub-regions in obtaining EDA grant funding for economic development related projects that meet funding criteria. East Central staff continued to support efforts of the Fox Cities Economic Development Professionals (FCEDP), the Northeast Wisconsin Regional Economic Development Partnership (NEWREP), New North Business Intelligence Committee (BIC) and other local partner organizations. East Central staff continued to work with partner organizations to determine next steps within Initiative 41 efforts. A variety of activities and assistance is provided every year through this program. Highlights for 2019 include:

EDA Projects

East Central staff assisted the City of New Holstein in successfully applying for \$22,500 in EDA funds to conduct a Market Feasibility Study for the former Tecumseh site. This project seeks to determine future uses for the 40 acre site and will create additional funding opportunities for cleanup work on the site.

East Central staff supported the City of Oshkosh in successfully applying for \$1.5 million in EDA funds to construct a road at the Southwest Industrial Park. This facility has transload equipment which provides the ability to load and unload non-containerized products. It is the first transload facility in the East Central Region and provides a competitive advantage for businesses in the area.



East Central staff continued to have ongoing discussions regarding potential projects with the City of Brillion, Menominee Tribal Enterprises, and the Wolf River Development Company.

Emsi:

- Summary of Use – 2019 was a normal year in terms of reports run for use within the agency and from data requests from members of our East Central Region. Eighty-eight reports were requested or run and that falls directly in-line with the average of 88.4 reports run for the last five years. A majority of the reports were run in the second half of the year which shows an increase of economic movement throughout our region.

Esri:

- Summary of Use – Twenty-nine reports were generated in 2019 as part of the Business Analyst extension from the Esri software package. Demographic/Income Profile and Market Profile reports were the most commonly requested throughout the year. The Business Analyst extension was used more in the respect to mapping and analysis in 2019, including using drive time zones, business point information including employee information, and using block group data with attached demographics (including ACS data sets) for many different projects. The Esri Business Analyst desktop and online versions have been a huge benefit to members of the East Central Wisconsin Region in regards to economic development projects.

| Industry Description | Number of Employees in Industry | | | | Current Wages, Salaries, & Proprietor Earnings | |
|--|---------------------------------|---------------|------------------|---------------|--|-----------------|
| | ECWRPC | | Wisconsin | | ECWRPC | Wisconsin |
| Manufacturing | 70,966 | 20.6% | 486,889 | 15.4% | \$60,228 | \$58,411 |
| Government | 42,641 | 12.4% | 410,378 | 13.0% | \$41,883 | \$46,535 |
| Health Care and Social Assistance | 38,422 | 11.1% | 416,356 | 13.2% | \$47,111 | \$49,680 |
| Retail Trade | 35,022 | 10.2% | 312,543 | 9.9% | \$27,189 | \$28,287 |
| Accommodation and Food Services | 26,060 | 7.6% | 244,917 | 7.7% | \$14,642 | \$16,353 |
| Construction | 22,259 | 6.5% | 156,122 | 4.9% | \$62,629 | \$58,828 |
| Other Services (except Public Administration) | 16,251 | 4.7% | 144,353 | 4.6% | \$24,696 | \$27,369 |
| Administrative and Support and Waste Management and Remediation Services | 15,325 | 4.4% | 158,043 | 5.0% | \$34,027 | \$32,587 |
| Finance and Insurance | 13,021 | 3.8% | 133,804 | 4.2% | \$67,502 | \$78,516 |
| Wholesale Trade | 11,838 | 3.4% | 127,242 | 4.0% | \$59,959 | \$69,331 |
| Transportation and Warehousing | 10,890 | 3.2% | 112,914 | 3.6% | \$49,518 | \$46,358 |
| Professional, Scientific, and Technical Services | 10,665 | 3.1% | 131,143 | 4.1% | \$67,289 | \$72,875 |
| Agriculture, Forestry, Fishing and Hunting | 8,394 | 2.4% | 56,078 | 1.8% | \$40,276 | \$40,027 |
| Management of Companies and Enterprises | 5,936 | 1.7% | 66,758 | 2.1% | \$124,773 | \$102,421 |
| Educational Services | 4,926 | 1.4% | 62,931 | 2.0% | \$24,997 | \$38,192 |
| Information | 4,340 | 1.3% | 48,538 | 1.5% | \$50,506 | \$76,991 |
| Arts, Entertainment, and Recreation | 3,766 | 1.1% | 48,461 | 1.5% | \$17,052 | \$31,101 |
| Real Estate and Rental and Leasing | 2,955 | 0.9% | 33,072 | 1.0% | \$43,226 | \$46,995 |
| Mining, Quarrying, and Oil and Gas Extraction | 619 | 0.2% | 3,875 | 0.1% | \$51,870 | \$66,002 |
| Utilities | 521 | 0.2% | 9,047 | 0.3% | \$91,881 | \$105,623 |
| Unclassified Industry | 0 | 0.0% | 2,117 | 0.1% | \$0 | \$57,124 |
| Total | 344,817 | 100.0% | 3,165,584 | 100.0% | \$46,574 | \$48,360 |

Source: Emsi Q1 2020 Data Set

Environmental Planning

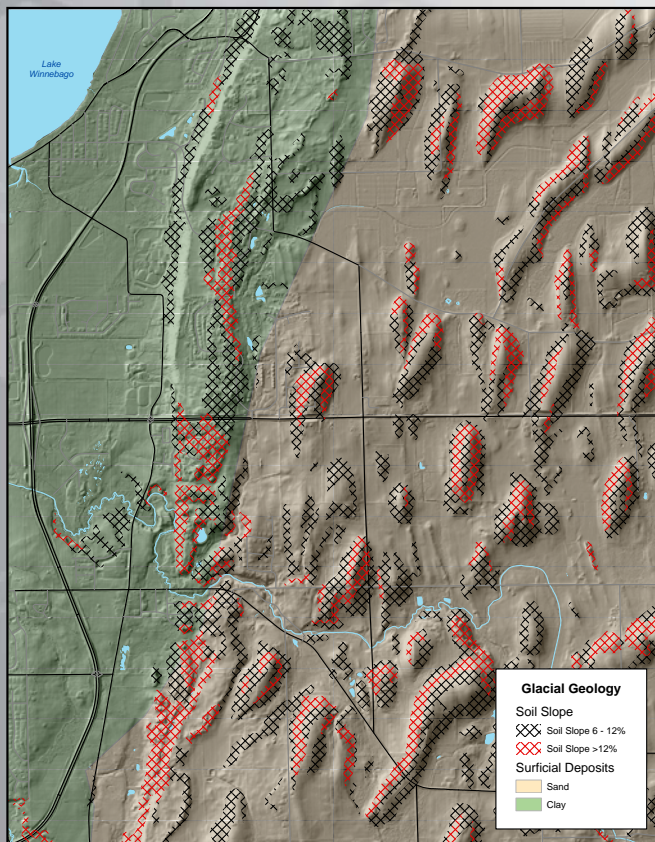
Calumet Co., Winnebago Co., and Fond du Lac Co. were chosen for the Lake Michigan Stakeholders Policy Maker Champions award for their leadership and follow-through helping to organize the Winnebago Waterways program.

In 2017, Calumet, Winnebago, and Fond du Lac counties formalized their shared commitment, through an intergovernmental cooperation agreement, to work together to support and promote restoration and beautification of the lakes and tributaries that are commonly referred to as the Winnebago Waterways (Lake Winnebago, Lake Butte des Morts, Lake Winneconne and Lake Poygan).



Under this agreement, the Winnebago Waterways Committee was formed. The county executive or administrator, chair of the county board, and chair of the county board's Land and Water Conservation Committee from each county serve on the committee. The first action of the committee was to advance Lake Management Planning for the Winnebago Waterways. The lake plan will be complete at the end of 2019.

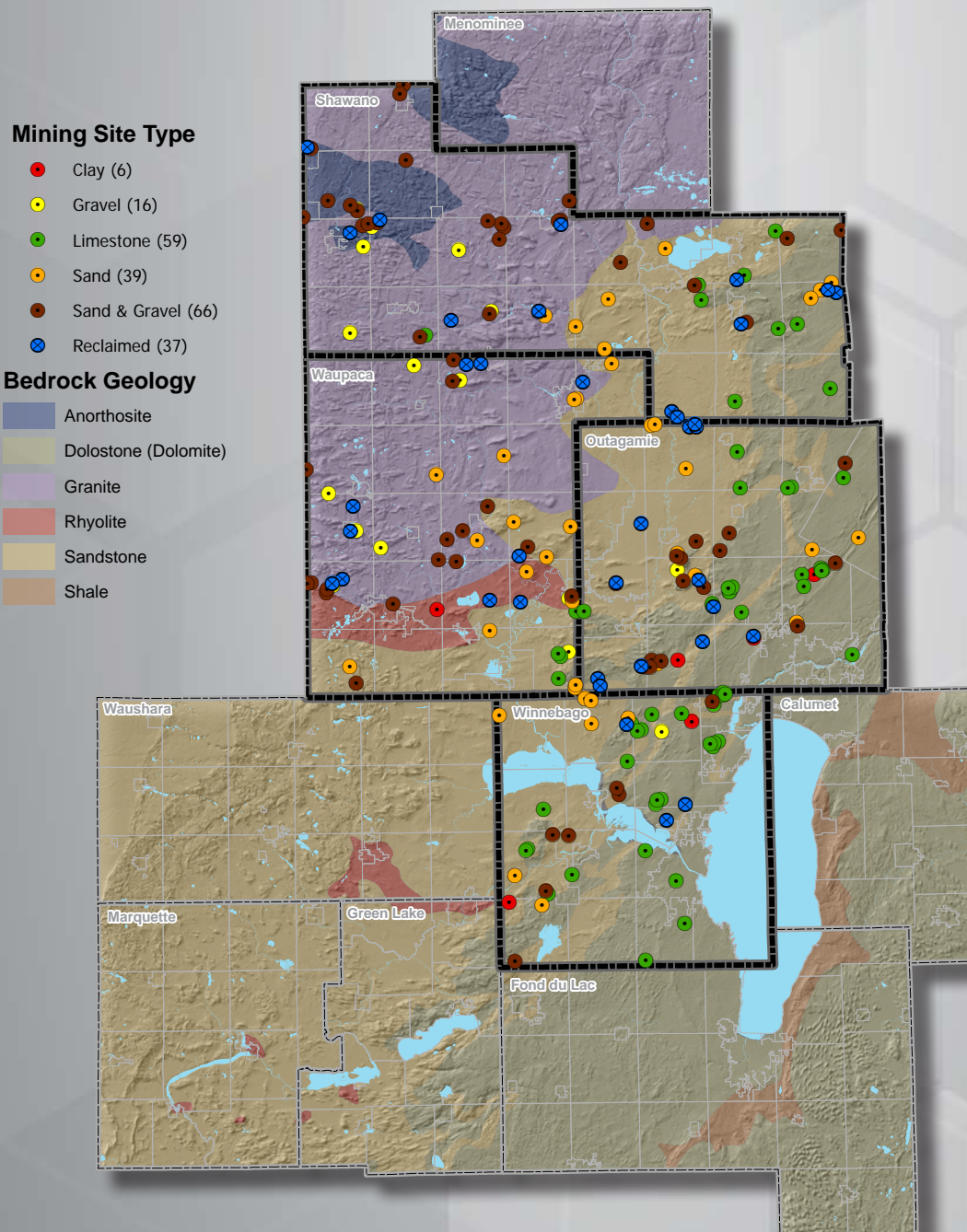
By formalizing their commitment, contributing financially, and being directly involved in lake improvement efforts, the counties have emerged as leaders in the region for protecting and restoring the health of the Winnebago Waterways surface waters as well as the watershed's tributaries within the five-county area including Calumet, Fond du Lac, Outagamie, Waushara and Winnebago Counties.



Glacial Geology is a map showing the deposits of sand, clay, peat, and gravel within the Niagara Escarpment corridor within Fond du Lac County. Fond du Lac County contracted with East Central to run an analysis of vacant lands near and around the escarpment for potential preservation. Many different factors went into determining which parcels should be considered – bedrock geology, glacial geology, ground and surface water sources, agriculture, historical and cultural significance, ecology, and public lands.

NR - 135 Non-Metallic Mining Reclamation Program

This multi-county administration program is the direct result of a state mandated rule (Chapter NR-135 Wis. Adm. Code) passed in December 2000. The overall goal of NR-135 is to provide a framework for statewide regulation of non-metallic mining reclamation. This was done by establishing uniform reclamation standards and requiring counties to adopt a reclamation plan ordinance capable of ensuring compliance with these standards. East Central, through a cooperative agreement signed in July 2001, administers these ordinances for four counties: Outagamie, Shawano, Waupaca, and Winnebago.



4
Counties

187
Permitted
Sites

3,630
Active
Acres

38
Reclaimed
Acres

Housing

East Central has served as a resource for addressing housing-related issues within the region. This is typically done by providing housing-related data to various organizations and identifying and discussing housing needs and potential solutions with communities and non-profits. Staff assists local housing authorities with strategic plans; facilitates the development of local comprehensive plans; and provides assistance and guidance to local governments, developers, and other entities as they address the region's housing issues. Examples of this type of assistance and leadership in 2019-2020 include:

Neighborhood Partners Network

Continued engagement with the Neighborhood Partners Network (NPN) initiative led by Goodwill Inc. Greater Oshkosh Healthy Neighborhoods Incorporated is also an active partner in this effort. Neighborhood Partners works with neighborhood leaders to achieve effective, sustainable neighborhoods through grassroots, bottom up methods. By offering training, tools, coaching and support to neighborhood leaders, relationships are being forged in neighborhoods that can have transformational effects.

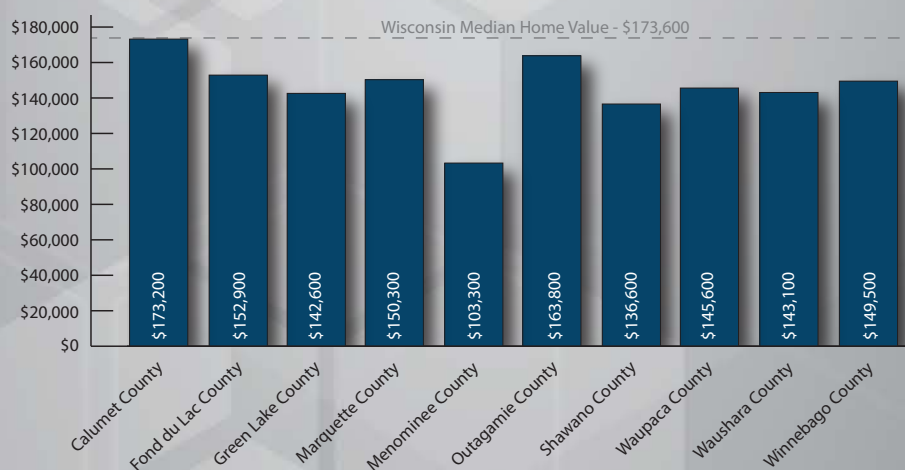
The Gappers Network

The Gappers Network parallels the neighborhood work being done by the NPN and is working to create a network of government, non-profit and institutional staff and leaders who can better support citizens as co-producers of change in their neighborhoods. Quarterly well-attended Lunch n' Learn events held in 2019 provided educational and networking opportunities for people working in the "gap" between neighborhoods and institutions. Quarterly Lunch n' Learn events included: Social Connectedness (May, 2019) and Asset Based Community Development (ABCD) (July and October, 2019).

Housing Affordability and New Housing Fee Reports

In 2018, the Wisconsin State Legislature approved new legislation which required villages and cities of 10,000 population or more to provide two separate annual reports related to affordable housing and housing fees in an effort to shed light and foster change on affordable housing issues across the state. Working with eight of our incorporated communities, and four of our towns, the Commission assisted our member communities to meet this requirement. Two regional reports summarizing the community reports were also developed. Two housing meetings were held in February to help foster dialog and communication between our communities and the land development/realty/home building stakeholders to improve the region's ability to accommodate the current and future needs for affordable housing.

2014-2018 ACS Median Home Values



Health in Planning

Safe Routes to Parks (SRTP)

Staff participated on the re:Th!nk Winnebago County Active Communities Team developing a Safe Routes to Parks (SRTP) initiative to ensure people can walk, bike or roll/wheel to a park, trail, green space, or other recreational area (e.g. swimming pool) in a way that is:

- Convenient
- Comfortable
- Appealing
- Safe from traffic and personal danger

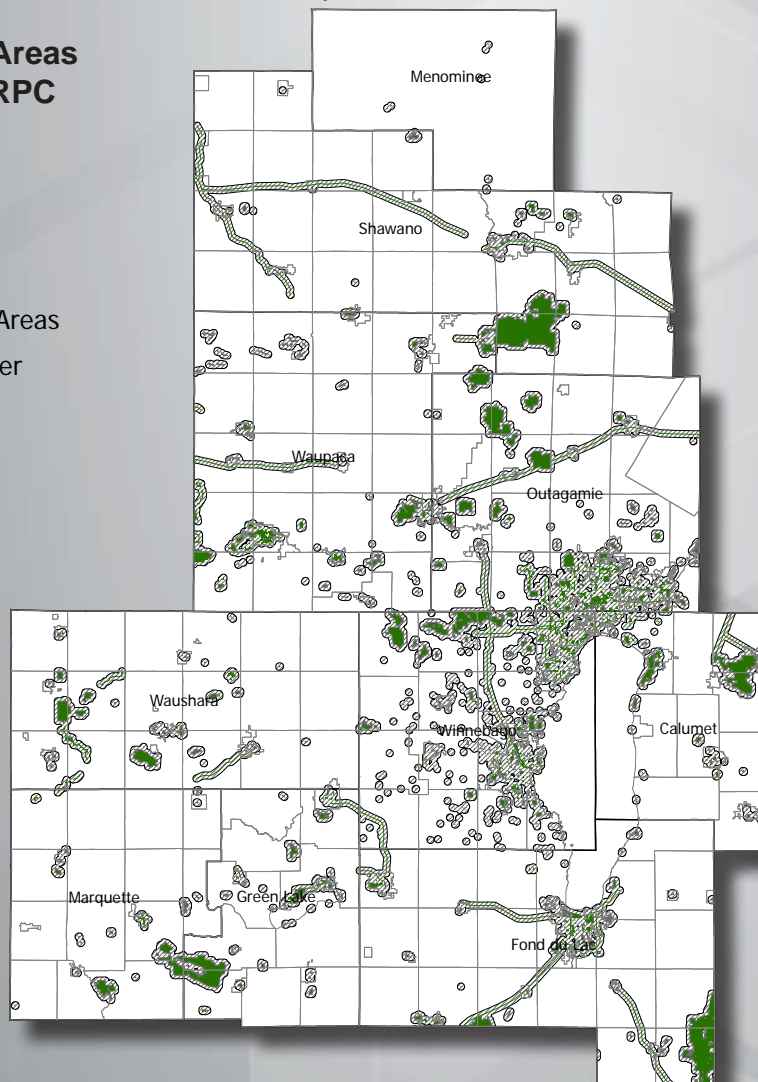
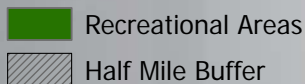
Adults living within a half mile of a park visit parks (and exercise) more often.

People are more likely to walk, bike, roll/wheel to parks if their communities are better connected to parks by active transportation routes.

The outcome of this initiative is to increase access to parks by working with residents to identify obstacles and potential improvements.

The Safe Routes to Parks initiative is supported by the National Recreation and Parks Association and Safe Routes to School National Partnership.

Recreational Areas within ECWRPC



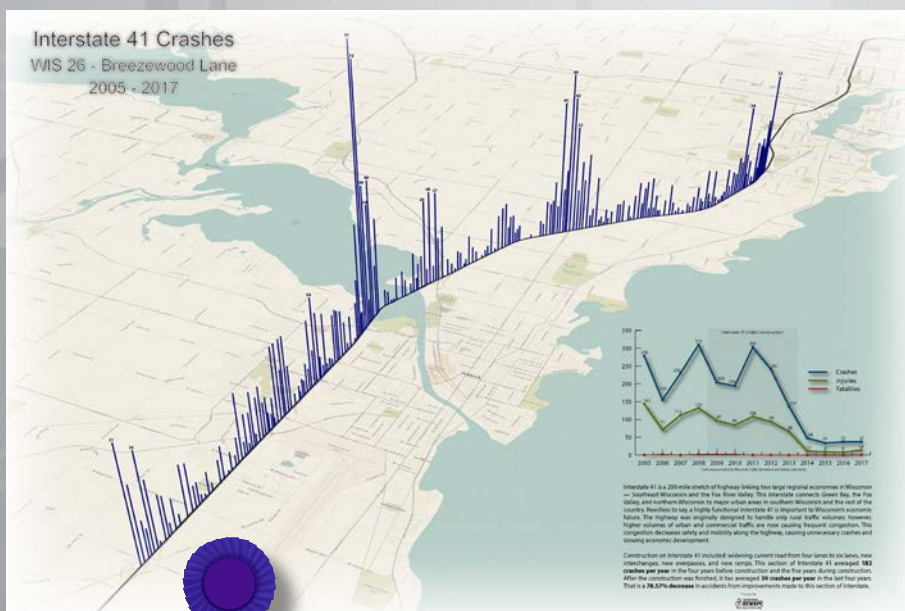
470,470 people live within a half mile of a recreational area, which totals 70% of the population for the ECWRPC Region

Geographic Information Systems

Geographic Information Systems (GIS) is defined as an advanced computer system capable of collecting, storing, viewing, and analyzing geographically referenced or spatial information. 'Geographically referenced' or 'spatial' simply means that the information can be viewed on a map and analyzed based on location and proximity. Examples of mapped places can include an address, a property or parcel, a named place such as a park or neighborhood, a census block, a zip code, or a city. By taking information stored in spreadsheets and tabular databases and displaying and analyzing it on a map, GIS becomes a powerful tool that directly supports the specialized needs of practitioners engaged in, among many others, the following fields:

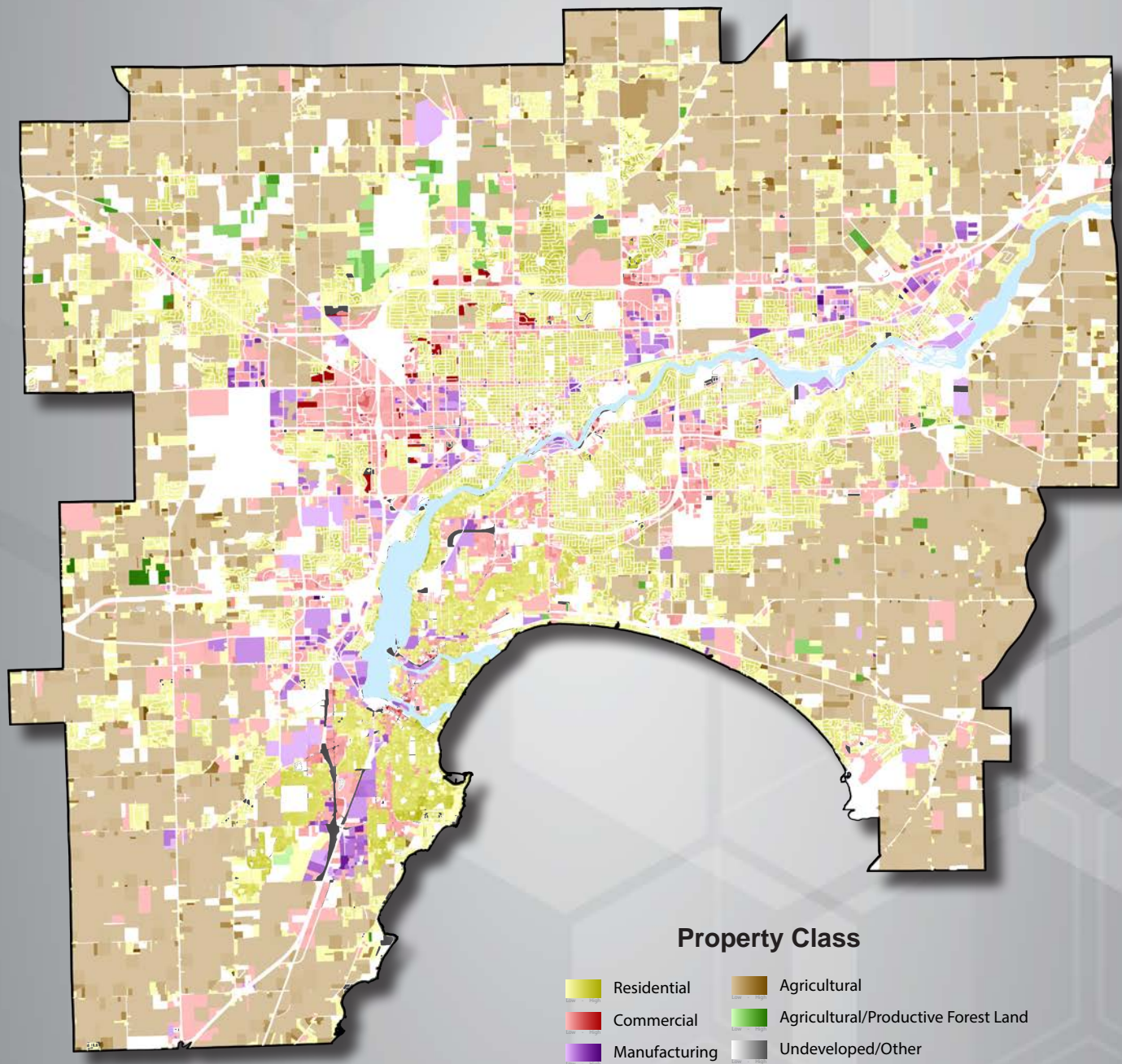
- Regional Comprehensive Planning
- Community Facilities Planning
- Transportation
- Open Space and Recreation
- Economic Development
- Environmental Management
- Education
- Emergency Management

The GIS Department has taken advantage of new online mapping technology by hosting interactive web maps and web applications that can be viewed in a browser, desktop, or mobile devices. The maps can be shared on blogs, via email, or embedded into a website. Examples of interactive web maps and web applications are below. The ECWRPC ArcGIS Online website address is <https://ecwrpc.maps.arcgis.com>.



The Wisconsin Land Information Association (WLIA) Map Contest at the Annual Conference is a great opportunity to share our best work with others who appreciate quality cartography and innovation. At the 2019 Annual Conference Michael Zuege won a special award, the President's Choice Award for his Interstate 41 Crashes - WIS 26 to Breezewood Lane 2005-2017 Map. The President of WLIA selects his overall favorite map for this award. This is the second time Michael has won this award.

Total Assessed Value / Acre by Property Class for the Appleton TMA - 2019



Source: Wisconsin Land Information Program (WLIP). Version 5 Statewide Parcel Database (2019). Madison, WI: Wisconsin Department of Administration (DOA); Wisconsin State Cartographer's Office (SCO).

Recreation

Planning for parks and open space is intended to improve the quality of life and provide a sense of place for all residents and visitors. Numerous researchers have attempted and succeeded in a number of cases in presenting scientific evidence that parks and open space have a number of benefits including community, individual, economic, and environmental benefits. Community benefits can be considered those that bring a positive result to a group of people; individual benefits are the exact opposite, providing a direct result to a single person. ECWRPC promotes all of these benefits within its planning efforts.

The Comprehensive Outdoor Recreation Plans or (CORPs) include: geography and demographics, goals and visioning, recreation resources unique to that community, needs assessments: land and facility based, health assessments and comparisons, recommendations, and action plans. These are completed every five years to be eligible for grant funding through the Wisconsin DNR and other entities.

The Commission has been involved in planning park strategies at county, local, and regional levels for over the past 45 years. Highlights of work in 2019-20 include:

Completed Comprehensive Outdoor Recreation Plans (CORP):

- City of Menasha (Winnebago County) 20 parks and green spaces, 246.8 acres
- City of Kiel (Calumet and Manitowoc Counties) 17 parks, 84.53 acres
- City of Shawano (Shawano County) 26 parks, 104 acres
- Shawano County 7 parks and facilities, 511 acres, county rec land 1,162 acres
- Winnebago County 16 Facilities, 788 acres

CORPs in Progress:

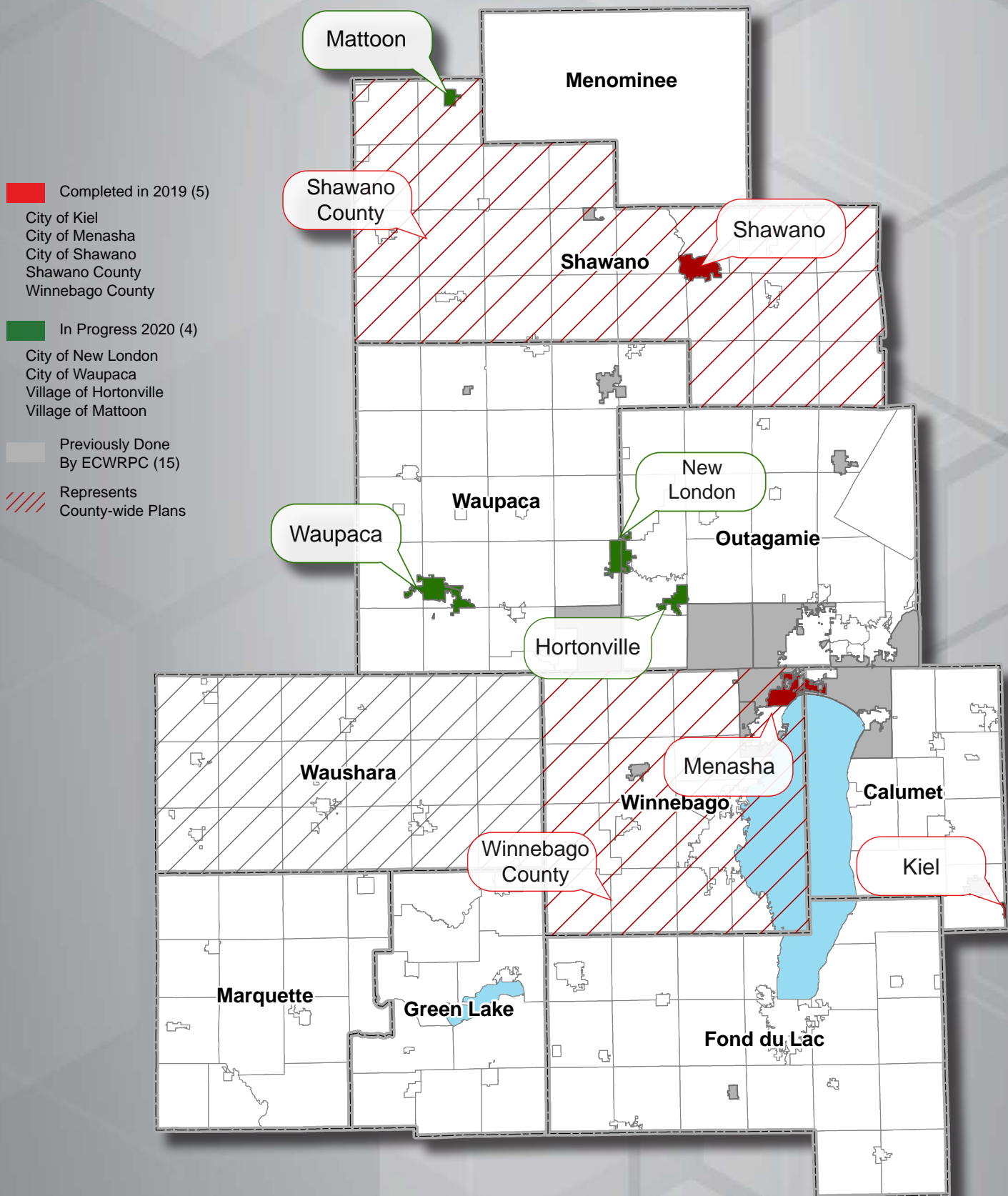
- City of New London (Outagamie and Waupaca Counties) 16 parks, 281.6 acres
- City of Waupaca (Waupaca County) 15 parks, 264.70 acres
- Village of Hortonville (Outagamie County) 10 parks, 46.05 acres
- Village of Mattoon (Shawano County) 3 parks, 15.7 acres, 80 acres of undeveloped woods

Economic Park Impact Studies:

- Phase III - March 1 to March 1 2018-2019 for Winnebago County's Sunnyview Exposition Center included a survey of 748 visitors to the area and a sampling of over 200,000 people who attended events at the expo. This sample revealed approximately \$270,477.00 went into the local economy over the 12 - month period as a result of events at the Expo.



Comprehensive Outdoor Recreation Plan (CORP) Status



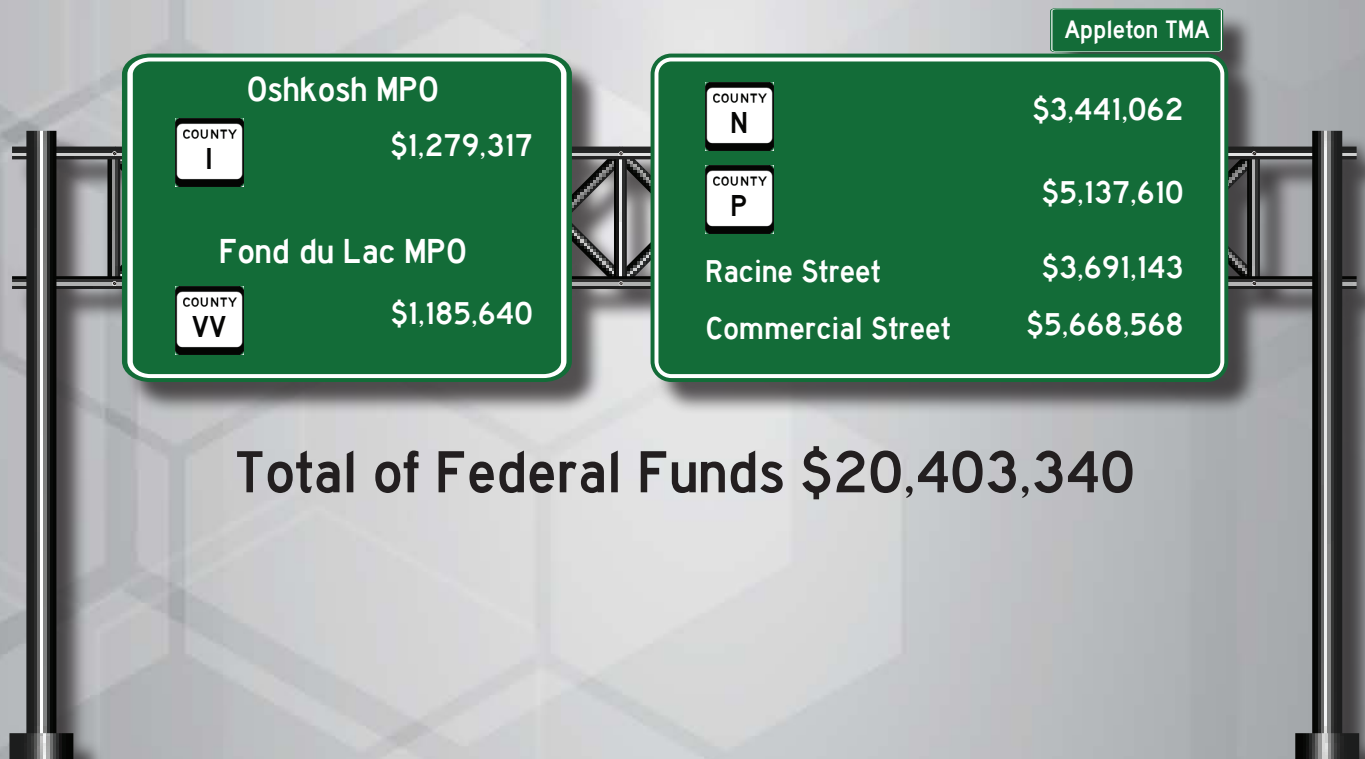
Transportation

Urban Transportation Planning

The Commission acts as the Metropolitan Planning Organization (MPO) for the Appleton (Fox Cities) Transportation Management Area (TMA) and the Oshkosh Urbanized Area and serves as staff of the Fond du Lac MPO Urbanized Area. A myriad of activities were conducted in 2019-20 associated with this program, including:

- Preparation of updates to the Long Range Transportation/Land Use Plans for these Urbanized Areas through collaborative processes. Additionally, staff led outreach efforts for public input with focus groups and “pop-up” style events. These 5-year plan updates will be completed October 2020.

Development of the 2020 Transportation Improvement Programs (TIP) for the Appleton (Fox Cities), Oshkosh and Fond du Lac Urbanized Areas. This program allocates federal and state funding to road and street improvement projects within the MPOs, such as selecting STP-Urban projects.



Commuter Modes



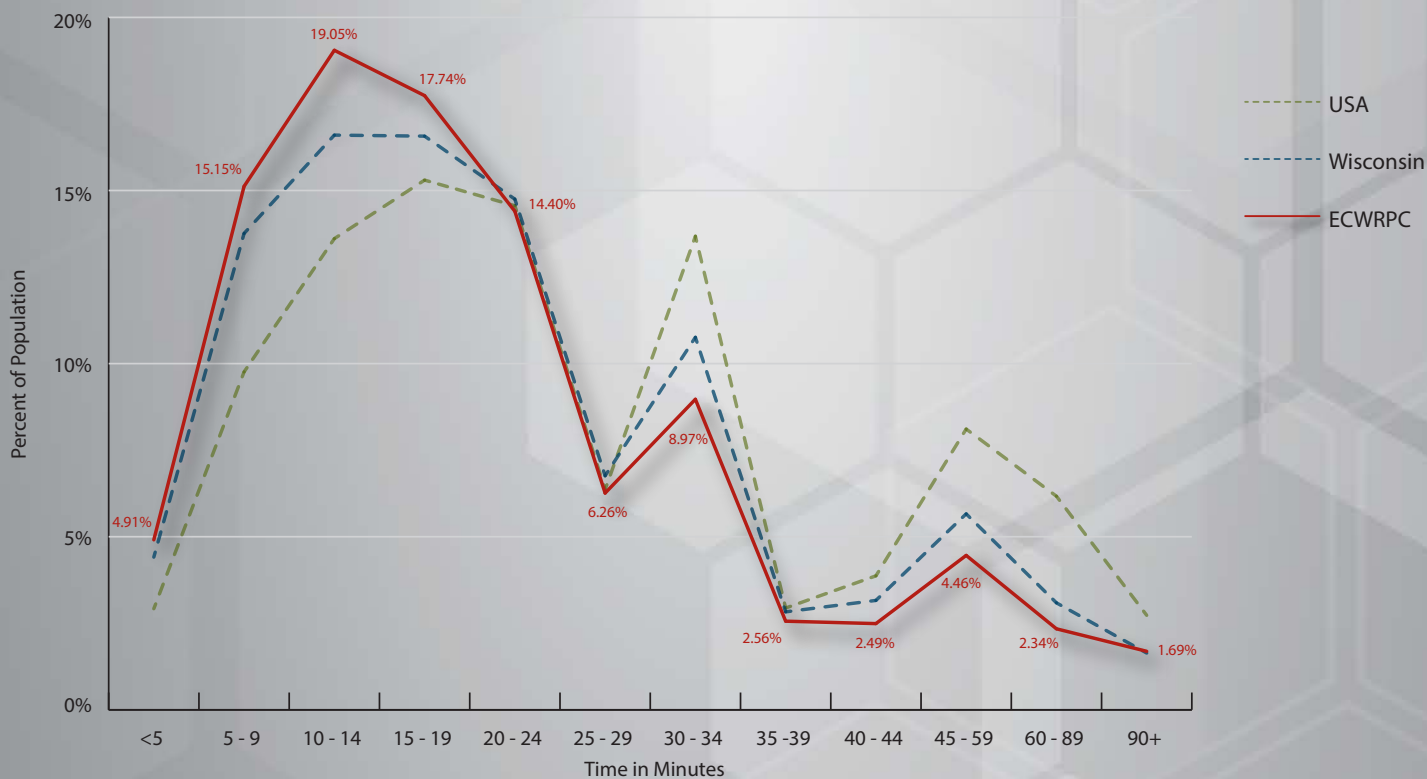
Source: 2019 ESRI Business Analyst

Rural Transportation Planning

The Commission assists numerous local governments within the rural portions of the region with both short-term and long-term transportation planning projects and infrastructure management tools. Highlights of this work in 2019-20 include:

- Actively participated in the Shawano County WIS 29 Intergovernmental Work Group which has been exploring the corridor's assets and developing a framework for future intergovernmental growth agreements between the City of Shawano and neighboring towns. Much of this effort has been focused on the CTH B corridor and lands surrounding the 29/47/55 interchange in the Town of Waukechon.
- Completed traffic studies and provided data used to apply for grants for the Town of Calumet, Fond du Lac County.
- Completed traffic studies and provided data used to apply for grants for the Town of Waupaca, Waupaca County.

Travel Time to Work



* Average travel time to work for the ECWRPC Region is 20.5 minutes.

Source: 2019 ESRI Business Analyst

Alternative Transportation

Urban & Rural Transit Planning

The Commission's Urban and Rural Transit Planning Program is funded through state and federal programs and concentrates on providing service to cost-effectively meet the needs of communities. Valley Transit, the Oshkosh GO Transit System, and Fond du Lac Area Transit all surpassed the Americans with Disabilities Act (ADA) requirements by providing complementary paratransit services for more hours and at a higher service level than required for those individuals who are unable to use the fixed route systems. Specialized transportation services are also available at the county level throughout the region. Some examples of projects ECWRPC worked on in 2019 and 2020 include:

- Staff completed Valley Transit's Transit Development Plan (TDP) in 2019 and was approved by the Fox Cities Transit Commission in February 2020.
- Staff coordinated a regional Interstate 41 Commuter Feasibility Study in 2019 which looked at employment transportation options on the I-41 Corridor within portions of Fond du Lac/Dodge, Winnebago, Outagamie, Calumet and Brown counties. Three regional transit route scenarios were recommended for the region. Future implementation efforts will continue into 2020.
- Coordination of a Wisconsin Department of Transportation (DOT) grants application and management on behalf of Oshkosh (GO Transit). This grant will start the planning process to redevelop GO Transit's downtown transit center.

Improving Mobility for All

In Winnebago County there are disadvantaged people who experience transportation barriers that affect the way they live their lives from job opportunities to where they can buy groceries. In response to these barriers, Winnebago Catch-A-Ride (WCAR) was developed. WCAR relies on volunteer drivers to help fill existing gaps within the transportation system. Volunteer drivers receive \$0.58 per mile (federal reimbursement rate) and have a choice to keep the mileage reimbursement or donate their reimbursement to the WCAR program or to another local non-profit of choice. WCAR does not duplicate existing transportation services, but rather leverages the strengths of its partners to meet the needs of people who are not being served by existing services. East Central staff in coordination with Lutheran Social Services – Make the Ride Happen, Greater Oshkosh Economic Development Corporation, Forward Services and Winnebago County Health Department continue the program with the help of Feonix Mobility Rising.

Winnebago 
CATCH-A-RIDE

Winnebago CATCH-A-RIDE 2019 Accomplishments

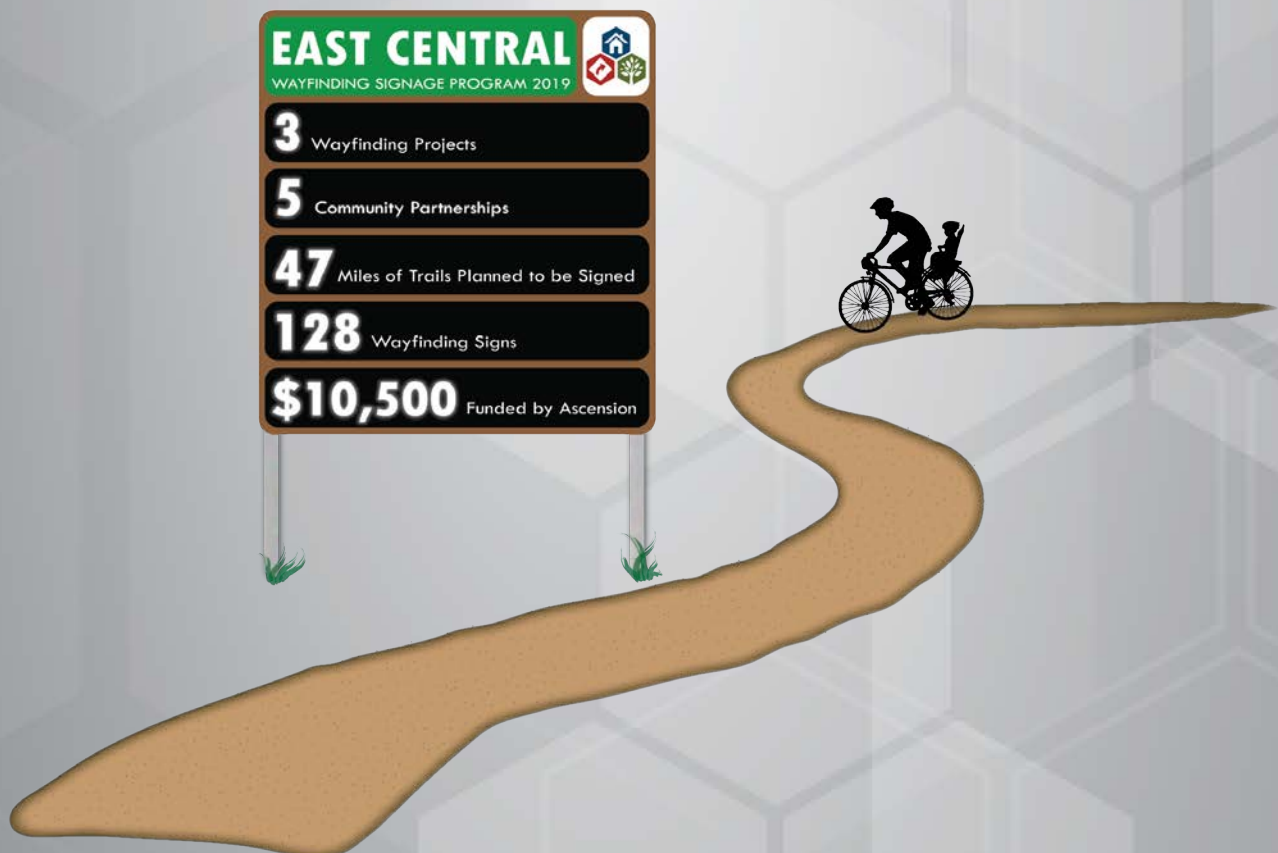


Wayfinding Implementation

East Central's Wayfinding Signage Guidebook proved itself in 2019 as three wayfinding signage projects were implemented. The WIOUWASH State Trail wayfinding signage project, which started in the fall of 2018, wrapped up with installation of the signs throughout the trail in the summer and fall of 2019. Following this project, East Central began work with the Outagamie County Parks Department and City of New London in planning for wayfinding signage on the Newton Blackmour State Trail. Additionally, the City of New Holstein and the City of Kiel came forward with a request to sign the Solomon Trail with Ascension Hospital of Calumet County aiding the project with a grant to pay for the signage.



The Fox Cities Convention & Visitors Bureau (CVB) developed the Regional Bicycle and Pedestrian Wayfinding Signage Grant Program as it recognizes the role our trails play in tourism and quality of life. The program allows municipalities within the CVB's service area that are interested in implementing wayfinding signage to apply for funding of up to 50% of signage costs, with \$50,000 available per year for a five-year period.



Safe Routes To School

In October 2009, ECWRPC launched a streamlined Regional Safe Routes to School (SRTS) Program to assist local SRTS coalitions to plan, develop and implement projects and activities. Safe Routes to School engages and empowers schools and communities to improve the health and well-being of children and families by advocating safe walking and bicycling.

EAST CENTRAL WISCONSIN

SAFE ROUTES TO SCHOOL



Events
in
2019-2020

207



Bike Safety: 75 schools
Winter Walk: 44 schools
Walk to School Day: 88 schools



Walking
School
Bus

Number of
programs
implemented
in schools

9

Average number
of kids walking
between fall / spring

203

Sponsorship
Funds

Over

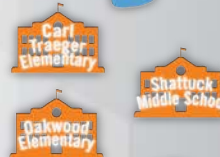
\$15,000



Project
Radar
Programs



Youth
Engagement
Programs



Frequent
Walker
Program

6

Participating schools

14,738

Miles walked



Educational
Campaign

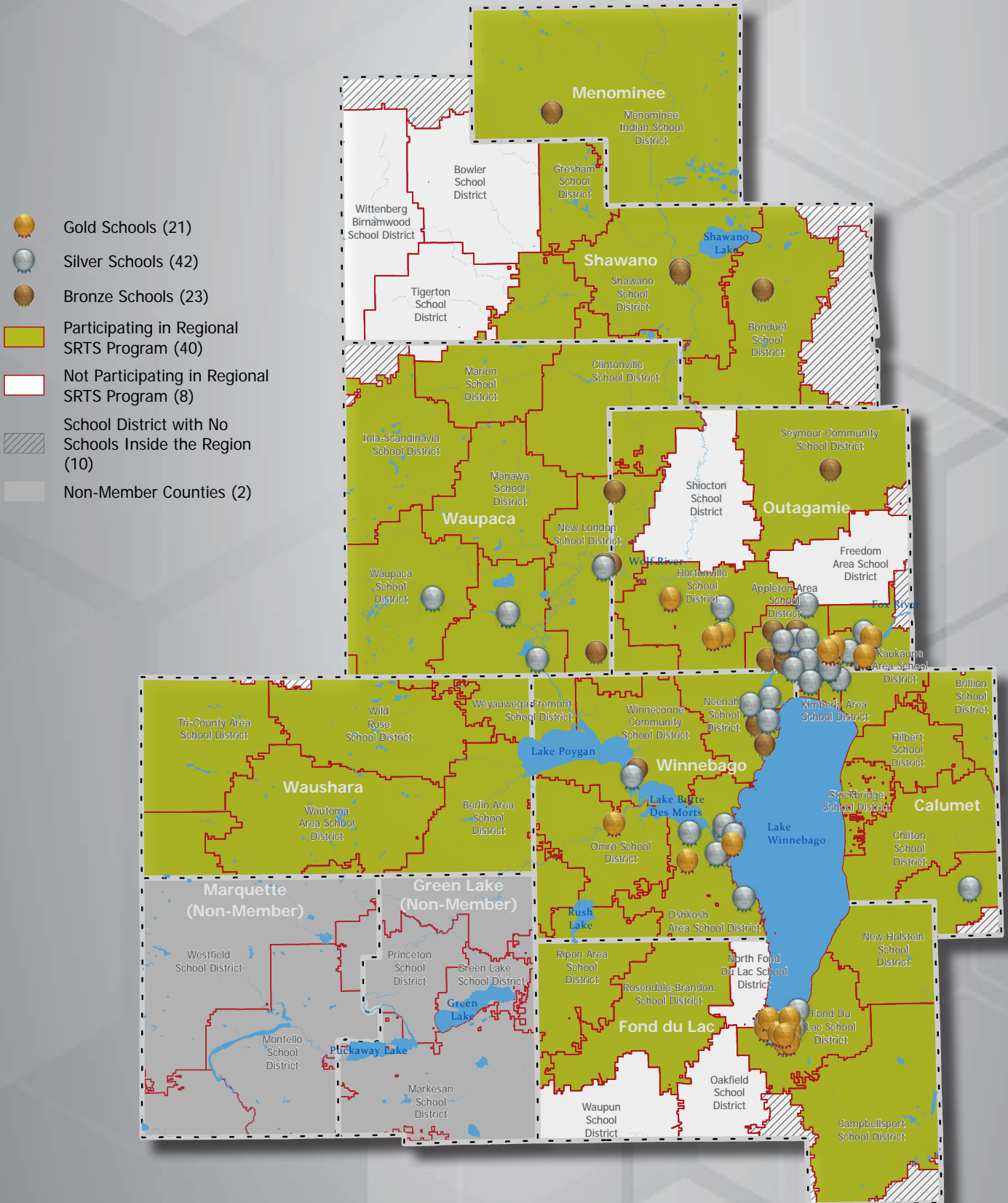


50 Banners distributed

1,500 Yard signs and posters distributed



East Central Regional Safe Routes to School Program 2019 SRTS School Recognition Program Awards



Executive Staff

Melissa Kraemer Badtke - Interim Executive Director
Walt Raith - Assistant Director & MPO Director

Technical Staff

Tim Badtke - IT Manager
Mike Zuege - GIS Manager
Adam Pfefferle - GIS Specialist II
Tanner Russell - GIS Assistant
Anna Hogan - GIS Assistant

Administrative Staff

Pam Scheibe-Johnson - Controller
Erin Bonnin - Administrative Coordinator

Planning Staff

Kathy Thunes, P.E. - Principal Planner
Trish Nau - Principal Planner
Tom Baron, AICP - Principal Planner
Nick Musson - Principal Planner
Todd Verboomen - Principal Planner
Dave Moesch - Associate Planner
Kim Biedermann - Associate Planner / Bicycle & Pedestrian Coordinator
Scott Konkle - Planning Specialist II / NR-135 Mine Reclamation
Kolin Erickson - Planner
Ashley Tracy, CHES - SRTS Planner
Hannah Keckeisen - SRTS Planner



2019 Commission Officers

Martin Farrell, Fond du Lac
Chair

Jeff Nooyen, Outagamie
Vice-Chair