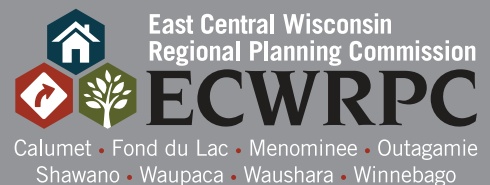
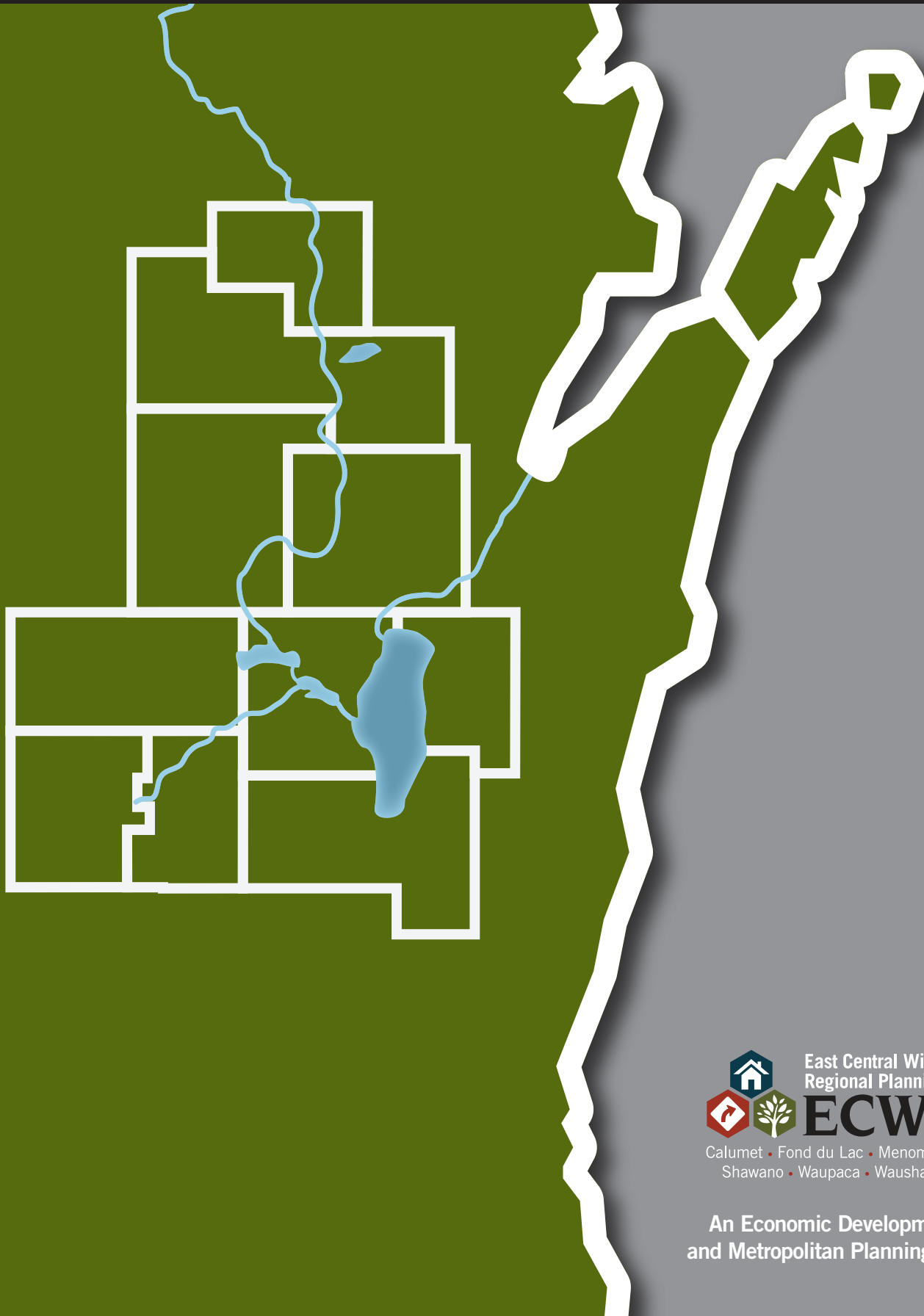




# East Central Wisconsin Regional Planning Commission

Annual Report 2017 - 2018



An Economic Development District  
and Metropolitan Planning Organization

# 2017 Roster of East Central Counties and Commissioners

## Menominee

**Elizabeth Moses**, County Board Chair  
(Perm. Alt. – **Jeremy Johnson**)  
**James Lowey**, County Board Supervisor  
**Ruth Winter**, Gubernatorial Appointee

## Shawano

**Jerry Erdmann**, County Board Chair  
**Tom Kautza**, County Board Supervisor  
**Chuck Dallas**, Gubernatorial Appointee

## Waupaca

**Dick Koeppen**, County Board Chair  
**Brian Smith**, Mayor, City of Waupaca  
**Gary Barrington**, County Board Supervisor  
**DuWayne Federwitz**, Gubernatorial Appointee

## Outagamie

**Jeff Nooyen**, County Board Chair  
**Thomas Nelson**, County Executive  
**Timothy Hanna**, Mayor, City of Appleton  
**Daniel Rettler**, County Board Supervisor  
**Kevin Sturn**, County Board Supervisor  
**Michael Thomas**, Gubernatorial Appointee

## Waushara

**Donna Kalata**, County Board Chair  
**Larry Timm**, County Board Supervisor  
**Neal Strehlow**, Gubernatorial Appointee

## Winnebago

**David Albrecht**, County Board Chair  
**Mark Harris**, County Executive  
**Steve Cummings**, Mayor, City of Oshkosh  
**Ken Robl**, County Board Supervisor  
**Ernie Bellin**, Gubernatorial Appointee  
**Robert Schmeichel**, Town of Neenah Chairman

## Calumet

**Alice Connors**, County Board Chair  
**Ed Kleckner**, County Board Supervisor  
**Merlin Gentz**, Gubernatorial Appointee

## Marquette

Withdrew from participation January 1, 2002. No individual community members participate and no representation is provided on the Commission.

## Green Lake

Withdrew from participation January 1, 1975. No individual community members participate and no representation is provided on the Commission.

## Fond du Lac

**Allen J. Buechel**, County Executive  
**Martin Farrell**, County Board Chair  
**Brenda Schneider**, County Board Supervisor  
**Lee Ann Lorrigan**, C. Fond du Lac Council Pres.  
(Perm. Alt. – **Joseph Moore**)  
**Charles Hornung**, Gubernatorial Appointee

## EX-OFFICIO MEMBERS

**Jill Michaelson**, WisDOT Northeast Region, State Representative  
**Ronald McDonald**, General Manager Valley Transit, Public Transportation Representative

## Message From The Chairman

As Chair of the Commission it gives me great pleasure to share with you a summary of the accomplishments of our agency over the past year. 2017 was a year of many accomplishments, as well as a few setbacks in terms of staff transitions and health issues. However, the agency is in good shape overall and continues to be relied on for its important work in a number of regional and local planning efforts.

One of our proudest moments was being selected as one of only six applicants nationwide by the Smart Growth America organization for the provision of technical assistance to better develop and apply the concept of "Complete Streets" throughout our region. A well-qualified team of experts from Washington D.C. and other parts of the country visited our region to help assess our practices and policies as it relates to improving our multi-modal infrastructure. A one-day workshop was held for key staff and policy makers on how having Complete Streets policies can benefit communities and the region as a whole. An ever increasing desire and need for transportation options exists within both our urban and rural communities. The benefits associated with adding more dedicated bike-lanes and on/off street pedestrian accommodations are many: reduced congestion, improved air quality and most importantly, the improved health of our residents are just some of the outcomes we expect from the adoption of such policies in the near future. In fact, the Commission is on the verge of adopting its own Regional Complete Streets Policy and stands ready to assist our member counties and communities in the development and application of their own Complete Streets policy.

While this report represents just a small slice of the activities that were conducted in 2017 and early 2018, know that the Commission's staff are busy on a multitude of efforts that will bring our communities together for the benefit of the region. I've been honored to serve as Chair for the past two years and I know that our future leadership will continue to move our agency forward in a progressive manner that shows the value of regional collaboration to all who come in contact with us.

Sincerely,

A handwritten signature in black ink that reads "Gerald Erdmann". The signature is written in a cursive, flowing style.

Gerald Erdmann, Chair  
Shawano County Board Chair



# Commission Overview

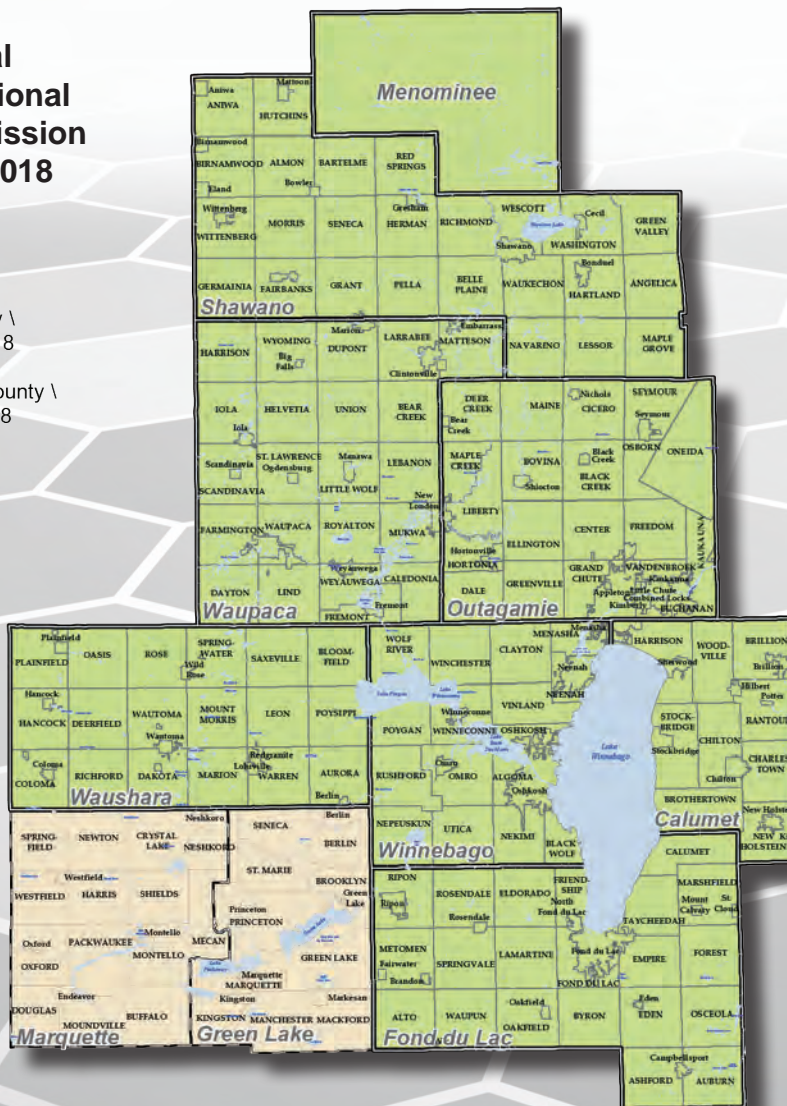
## Agency History

The East Central Wisconsin Regional Planning Commission (ECWRPC) was created under Executive Order No. 41, issued by Governor Patrick J. Lucey, dated June 29, 1972. This action was taken after the submittal of petitions by the ten counties within the East Central Region pursuant to SS. 66.945 (now SS. 66.0309), the existing regional planning enabling statute. The ECWRPC was preceded by two areawide planning agencies: the Fox Valley Council of Governments (FVCOG) formed in 1956 and was composed of 15 governmental units in the Appleton-Neenah and Oshkosh Urbanized Areas; the Northeastern Wisconsin Regional Planning

Commission (NEWRPC) formed in 1962 and was composed of nine counties encompassing the Wolf River Basin. With the issuance of the U.S. Department of Housing and Urban Development's (HUD) Areawide Planning Organization (APO) and Areawide Principal Jurisdiction (APJ) certification requirements in July, 1970, these two agencies were dissolved and replaced by ECWRPC which was roughly aligned with uniform state administrative districts. The three northernmost counties of NEWRPC were removed from the region and Calumet, Fond du Lac, Green Lake, and Marquette Counties were added to the south.

### East Central Wisconsin Regional Planning Commission Membership 2018

-  Member County \ Municipality 2018
-  Non-Member County \ Municipality 2018



## Agency Functions

The Commission is established as an advisory planning agency with eight of its ten counties as dues paying members. Much of its work is focused within the three designated urbanized areas that lie along the Interstate 41 corridor; however, many rural communities are assisted on a regular basis as well. A major role for the Commission is to ensure that the region's urbanized areas are in compliance with federally mandated transportation planning requirements. The Commission staffs, and serves the function of being the Policy Board, for the Appleton and Oshkosh Metropolitan Planning Organizations (MPOs) which were authorized by the governor in December, 1973. It also staffs the Fond du Lac MPO which was designated in May 2002 when the urbanized area

population exceeded 50,000. Due to population growth exceeding 200,000 in the Appleton MSA, this MPO received Transportation Management Agency (TMA) status in 2012 (with Federal Highway Administration (FHWA) certification in 2016). These transportation planning efforts also include the implementation of a regional Safe Routes to School program. Additionally, the Commission is also a designated Economic Development District by the U.S. Department of Commerce-Economic Development Administration (EDA) and provides a water quality planning function under arrangements with the State's Wisconsin Department of Natural Resources. The remainder of its programs are primarily funded through the local levy charges to member counties.

### Audited Statement of Net Position as of 12/31/17

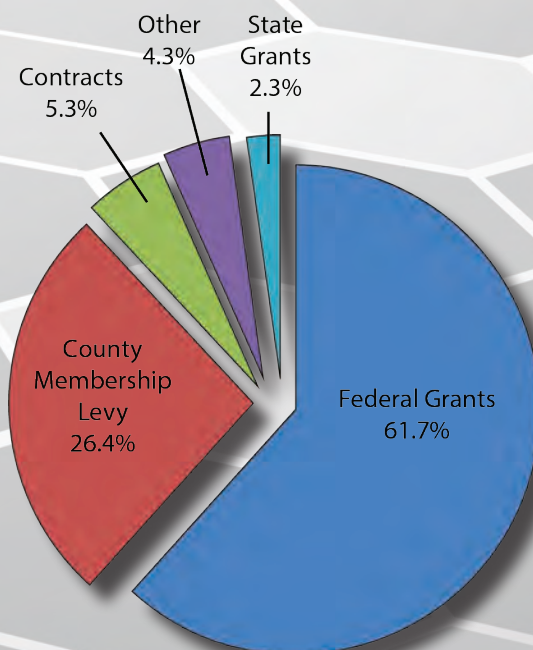
Total Assets	\$872,686
Deferred Outflows (Pension)	\$516,971
Total Liabilities	\$557,667
Deferred Inflows (Pension)	\$222,718
Total Net Position	\$609,272

### Audited Statement of Revenues, Expenses, and Changes in Net Position, 12/31/17

Total Operating Revenues	\$2,919,293
Total Operating Expenses	\$2,964,728
Operating Loss	(\$45,435)
Total Non-Operating Expenses	(\$2,010)
Net Position - Jan. 1, 2017	\$656,717
Net Position - Dec. 31, 2017	\$609,272
Change in Net Position	(\$47,445)

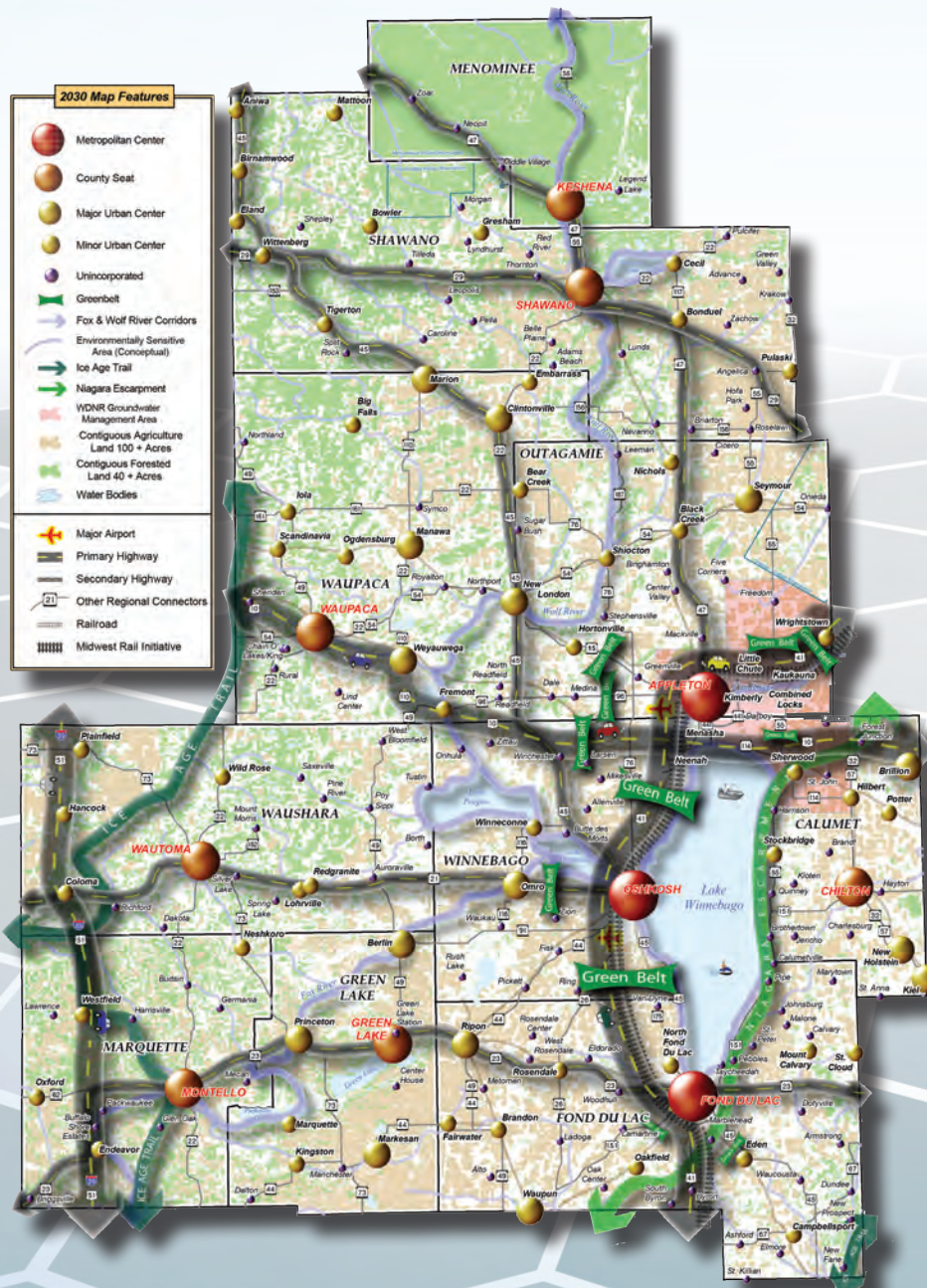
### 2017 Operating Revenue Sources

Federal Grants	\$1,800,864
County Membership Levy	\$771,698
Contracts	\$155,872
Other	\$125,226
State Grants	\$65,633




# Comprehensive Planning


In the fall of 1999, new statewide comprehensive planning requirements were signed into law as part of the governor's budget bill. SS 66.1001 requires that, starting in 2010, land use decisions must be based on an adopted comprehensive plan as defined in the law. This applies to any and all levels of government within the State of Wisconsin that wish to exercise any land use regulatory powers. The legislation also requires the development of a regional comprehensive plan, which was accomplished by the Commission in 2008 and is shown below. This comprehensive plan is now in the process of being updated and is expected to be completed in 2019. The Commission also assists many communities on an annual basis to meet these requirements. In 2017 and 2018, the Commission helped twelve (12) local jurisdictions with the process of updating their comprehensive plans under contractual arrangements as shown on the next page.



# Comprehensive Plan Status 2017 - 2018

 Completed 2017

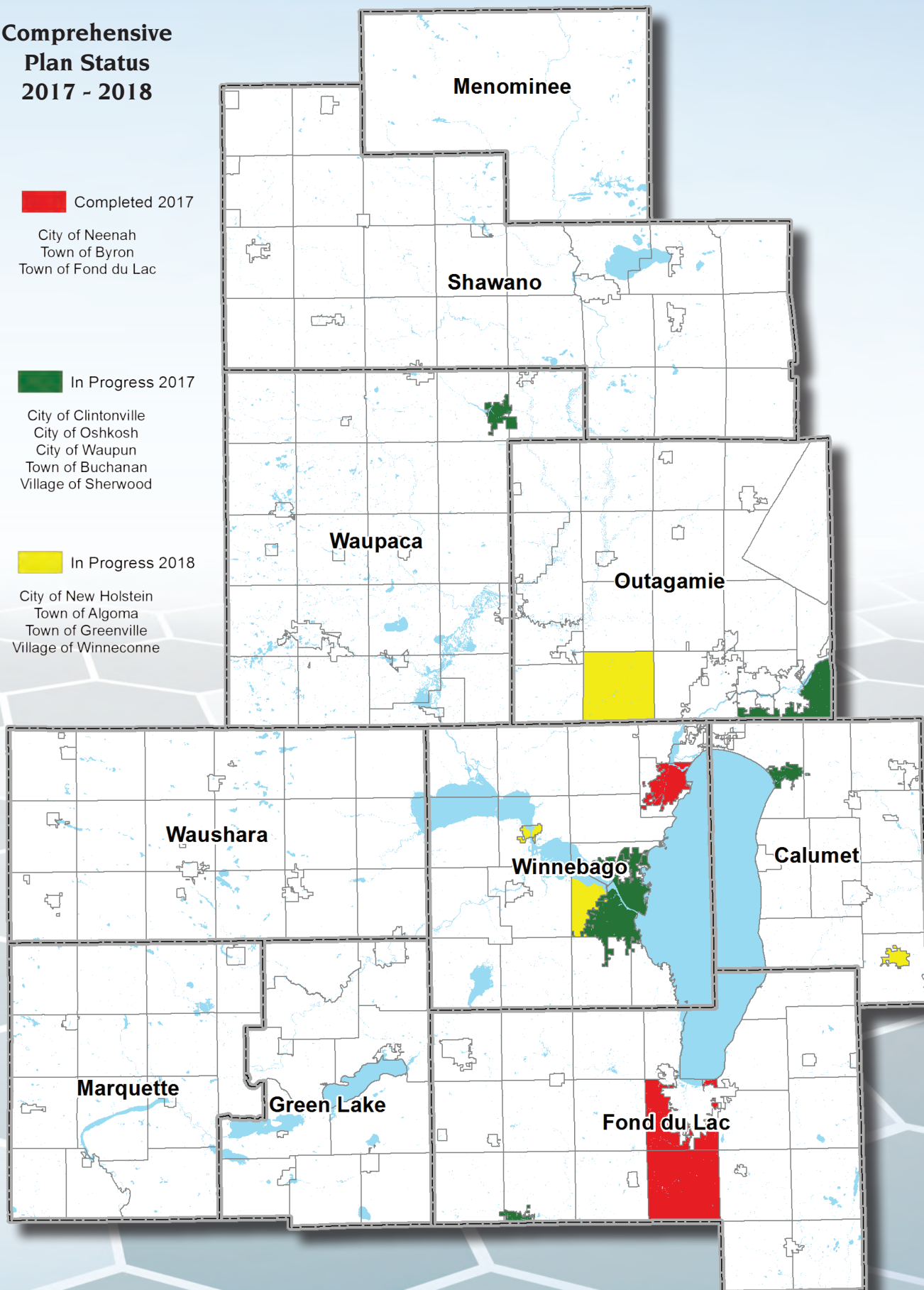
City of Neenah  
Town of Byron  
Town of Fond du Lac

 In Progress 2017

City of Clintonville  
City of Oshkosh  
City of Waupun  
Town of Buchanan  
Village of Sherwood

 In Progress 2018

City of New Holstein  
Town of Algoma  
Town of Greenville  
Village of Winneconne

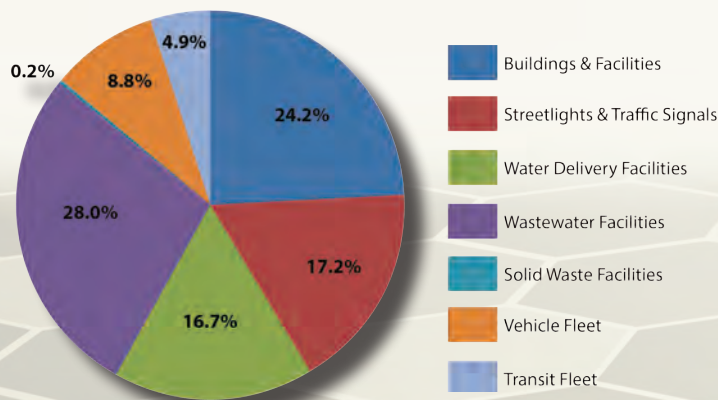


# Community Facilities

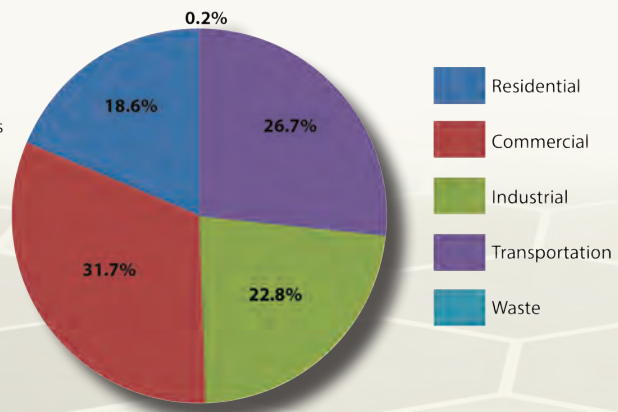
The viability of the region, in terms of economics and quality of life, is dependent on a highly developed infrastructure of basic community and public facilities. Existing and new development require municipal services that are often administered at a regional scale, including the efficient removal and permanent storage of waste and recyclables; a dependable supply and efficient transmission of natural gas and electric; a fast reliable telecommunications network that employs the latest technology; a reliable system that quickly responds to fire, police and other emergency situations; and an accessible and affordable healthcare system. The Commission serves a number of roles within the management of local-level community facilities as shown below and on the next page.

The Commission worked with the City of Oshkosh to complete the *ICLEI Milestone 2: Set a Reduction Target for the City of Oshkosh* report under its technical assistance program. This report summarized the baseline inventory of greenhouse gas emissions due to municipal operations and the City as a whole. The report's purpose is to be used as a guide for setting short, mid and long-term greenhouse gas reduction targets for/by the City and to develop potential strategies that can be used to achieve these targets.

Oshkosh Municipal Operations Percent Greenhouse Gas Emissions by Sector, 2007

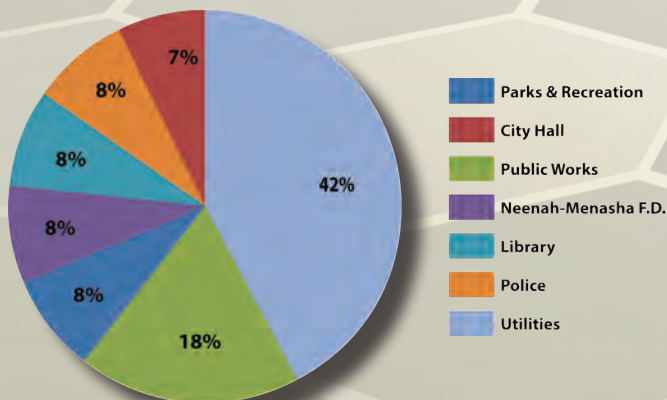


Oshkosh Community-Wide Percent Greenhouse Gas Emissions by Sector, 2007



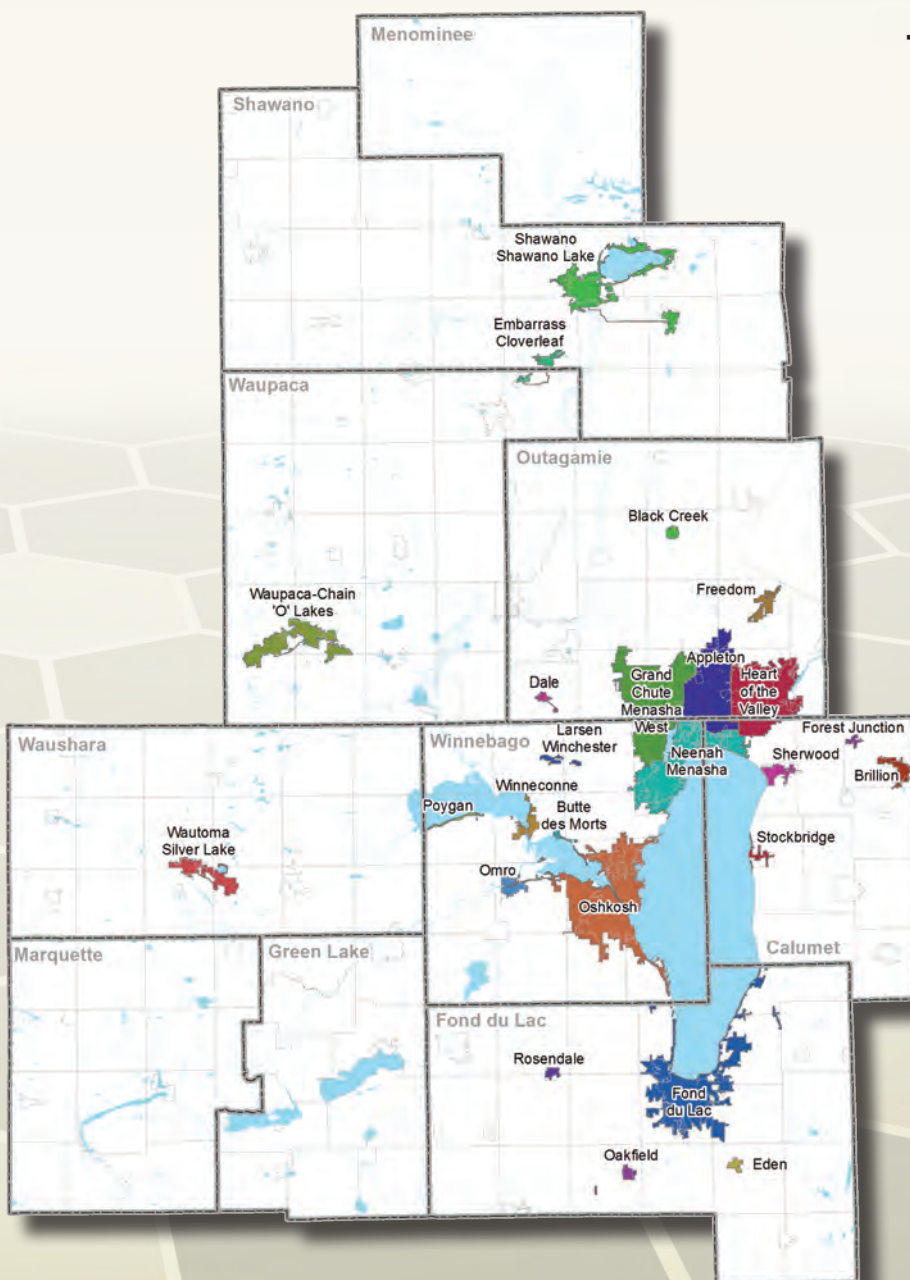
The Commission completed the *City of Neenah Greenhouse Gas Emissions Analysis, 2014* report and looked at energy usage (natural gas and electricity) for the City's municipal operations in 2014. Greenhouse gas emissions by department and source were then calculated as part of this effort. The information will be used to set targets for future reductions.

Neenah Percent Greenhouse Gas Emissions by Department for Municipal Operations, 2014



## Sewer Service Area (SSA) Management

The Commission administers the State of Wisconsin's NR-121 Sewer Service Area (SSA) Planning Program under a memorandum of agreement and contract with the Wisconsin Department of Natural Resources (WDNR). The Commission staff and Community Facilities Committee serve as review entities for, and advisors to, the WDNR for the development of twenty-five separate SSA plans and subsequently requested SSA boundary amendments. The Commission also conducts plan conformance reviews on certain activities related to wastewater treatment and sewer infrastructure planning and construction.



### 74 Total Projects in 2017

- 23 Sanitary Lateral Reviews
- 40 Public Sanitary Sewer Extensions
- 10 Subdivision Plats
- 1 Wastewater Treatment Facilities Plan

# Economic Development

The Commission's Economic Development Program is partially funded through the Federal Department of Commerce, Economic Development Administration (EDA). As such a Comprehensive Economic Development Strategy (CEDS) is prepared annually for the region. The Commission also seeks to assist communities and sub-regions in obtaining EDA grant funding for economic development related projects that meet funding criteria. A variety of activities and assistance is provided every year through this program. Highlights for 2017-2018 include:

- Development and approval of a new 3-year, \$210,000 EDA Planning Grant which supports the Commission's staff and activities in this arena.
- Completion of the 2017 Comprehensive Economic Development Strategy (CEDS) report which documents the economic conditions and needs within the region.
- Became a newly engaged partner with New North's Gold Shovel Site Certification Program, whereby the Commission provides third party verification of site information requirements.
- In partnership with the Wisconsin Economic Development Corporation (WEDC), provided economic analysis services using EMSI and ESRI Business Analyst. 126 separate reports were generated based on internal projects and requests from the region's communities.
- With the assistance of the Greater Oshkosh EDC, completed the final report for the Village of Winneconne's 2016 technical assistance project which contains findings of a community perceptions event held in late 2016.
- Several visioning workshops were held, and reports produced, for the region's communities that will serve as a foundation for their respective downtown revitalization activities. These include:
  - *The City of Waupun Downtown Visioning Workshop Report;*
  - Village of Little Chute focused on the downtown environment; and
  - "On the Banks of the Wolf" Visioning Workshop in New London.
- Began the "Initiative 41" project (see next page) with partner entities, City of Oshkosh, UW Oshkosh, and Envision Greater Fond du Lac in order to build a more resilient and diverse economic base for the region. This project is part of a \$2M implementation grant received from the Department of Defense – Office of Economic Adjustment.



# DRIVING THE FUTURE

## A STRATEGY FOR FOSTERING COLLABORATIVE ECONOMIC DEVELOPMENT ALONG THE I-41 CORRIDOR

In 2017, the East Central Wisconsin Regional Planning Commission engaged TIP Strategies, an Austin-based economic development consulting firm, to prepare a regional economic development strategy designed to build a more resilient and diversified manufacturing base in the five-county I-41 Corridor.

### GOALS

- 1** Implement a cohesive regional talent strategy.
- 2** Enhance the corridor's infrastructure and economic competitiveness.
- 3** Foster a stronger collaboration ecosystem.

### KEY STRATEGIES

- Establish an I-41 Corridor talent council to implement the talent strategy.
- Design and launch a regional talent campaign to support the recruitment of talent to the I-41 Corridor.
- Strengthen collective efforts to improve and expand the region's transportation and mobility infrastructure.
- Develop the I-41 Corridor as a "smart corridor."
- Advocate forcefully and collaboratively around key infrastructure issues.
- Launch an internal marketing campaign designed to reinforce the collective approach for the region and create a sense of regional identity within the corridor.

### TARGET CLUSTERS

- Aerospace Vehicles & Defense
- Automotive
- Food Processing & Manufacturing
- Metalworking Technology
- Paper & Packaging
- Production Technology & Heavy Machinery
- Hospitality & Tourism
- Information Technology & Analytical Instruments
- Insurance Services
- Financial Services
- Printing Services
- Business Services
- Transportation & Logistics

### I-41 BY THE NUMBERS

**45,000 RESIDENTS**  
added to the population  
from 2006 to 2016<sup>1</sup>

**869,000 PEOPLE**  
are projected live in I-41  
by 2030<sup>2</sup>

**3.7 PERCENT**  
unemployment rate in the  
region for 2016<sup>3</sup>

**26,000 COMMUTERS**  
arrive from outside the  
region daily (net figure)<sup>4</sup>

**69,000 JOB OPENINGS**  
expected over the next  
five years<sup>5</sup>

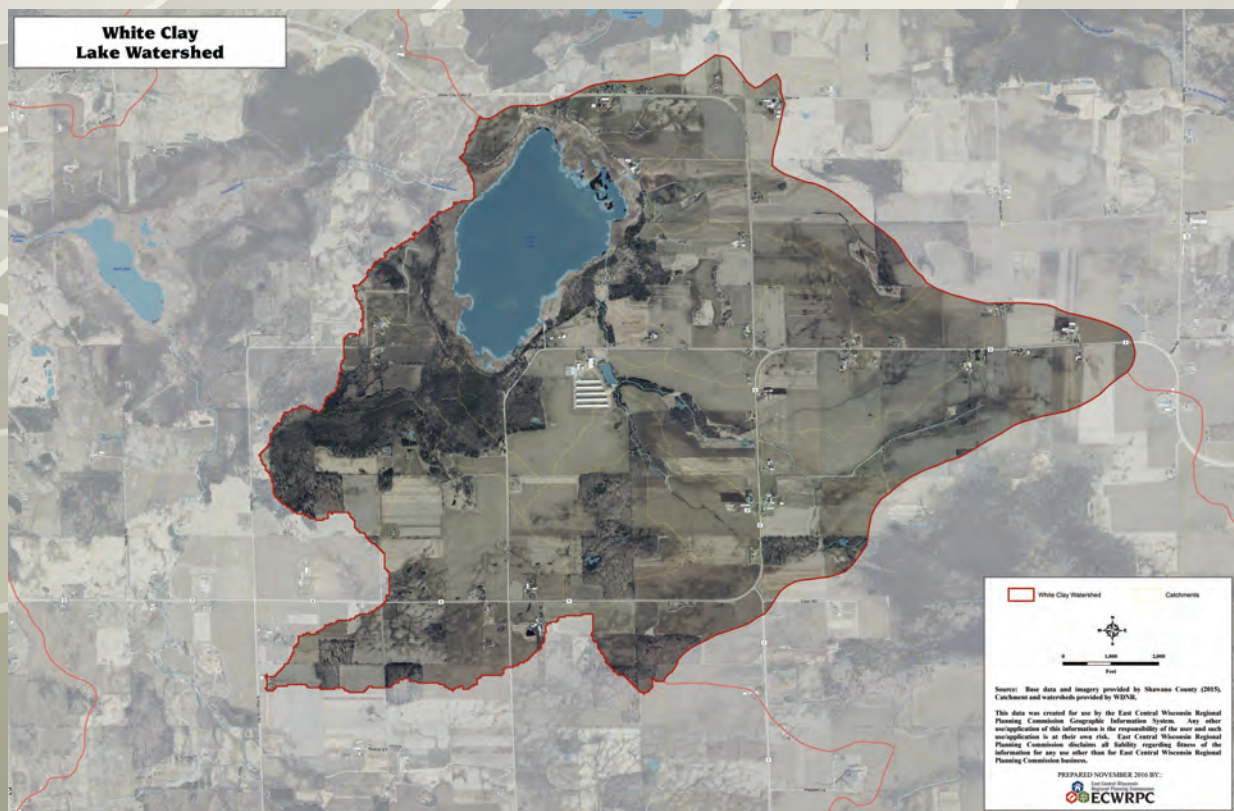
**80 PERCENT**  
of all job openings will be  
replacement jobs (many due  
to retirements)<sup>6</sup>

Sources: 1) US Census Bureau 2) State of Wisconsin's Demographic Services Center 3) US Bureau of Labor Statistics 4) US Census Bureau 5) and 6) EMSI 2017.1 – QCEW Employees, Non-QCEW Employees, and Self-Employed.

# Environmental Planning

The Environmental Management Program focuses mainly on surface and groundwater protection, but also delves into areas such as habitat protection, aquatic invasive species control, stormwater management, and educational outreach. Assistance in the form of information, guidance, and perspective is provided through a number of regional initiatives and local projects. Highlights for 2017-18 include:

- Assistance to the Shawano County Land Conservation Department to review and discuss recommendations on a complete re-write of its Livestock Siting/Waste Management Ordinance which will better address State legal requirements and improve administration of the program.
- Continued leadership of the Niagara Escarpment Resource Network (NERN) organization, which is part of the Lakeshore Natural Resource Partnership (LNRP) 501c(3) organization. NERN provided support and promotion for a new documentary film entitled “The Great Ledge” by Dan Larson, a De Pere native. The April 2017 film premiered to a “sold out” crowd of over 170 persons, with hundreds more viewing at other showings throughout the Escarpment corridor.
- Continued leadership, support and local assistance was provided for the following projects:
  - Winnebago Waterways’ efforts to update the *Winnebago Pool Lakes Management Plan* scheduled for completion in 2018;
  - Lake Michigan Stakeholders, a multi-jurisdictional, collaborative effort to improve this Great Lake through local stewardship and water quality improvement activities; and
  - Continued contractual assistance on the development of the *White Clay Lake – Lake Management Plan Update*, located in Shawano County.

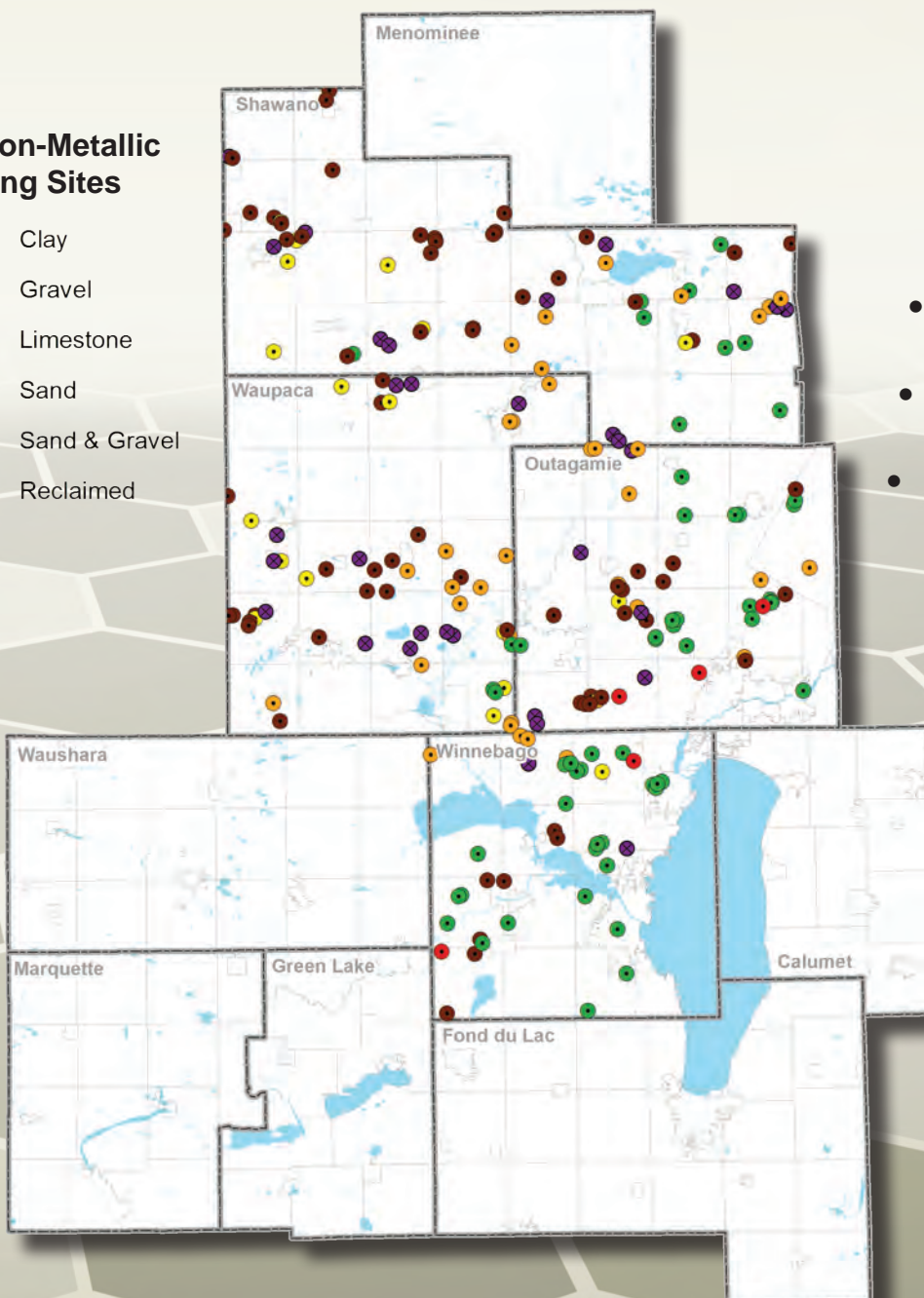


## NR - 135 Non-Metallic Mining

This multi-county administration program is the direct result of a state mandated rule (Chapter NR-135 Wis. Adm. Code) passed in December 2000. The overall goal of NR-135 is to provide a framework for statewide regulation of non-metallic mining reclamation. This was done by establishing uniform reclamation standards and requiring counties to adopt a reclamation plan ordinance capable of ensuring compliance with these standards. East Central, through a cooperative agreement signed in July 2001, administers these ordinances for four counties: Outagamie, Shawano, Waupaca, and Winnebago.

### 2017 Non-Metallic Mining Sites

- Clay
- Gravel
- Limestone
- Sand
- Sand & Gravel
- Reclaimed



### 2017 Summary

- 187 Total Permits
- 3,561 Active Acres
- 78 Reclaimed Acres

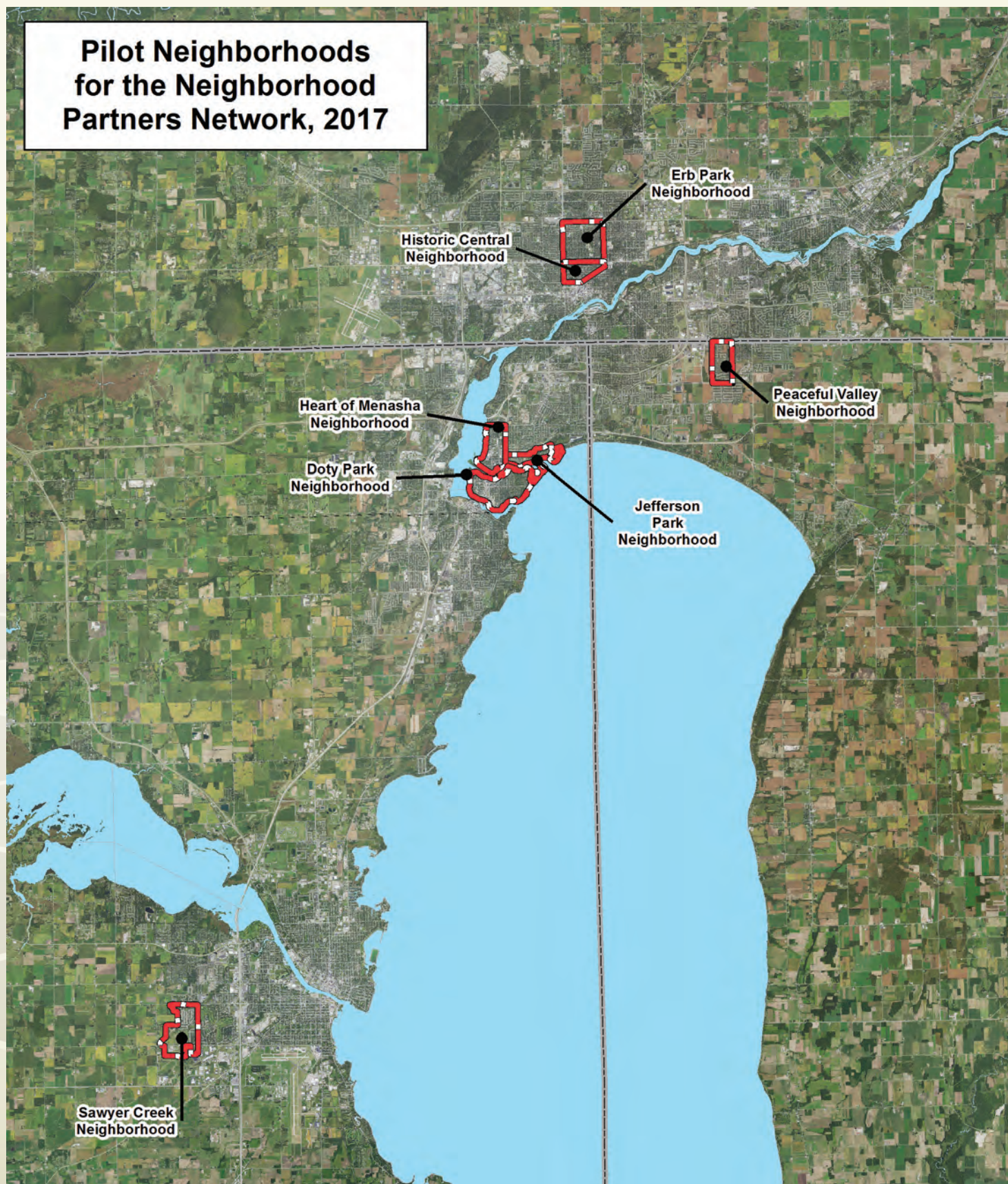
# Housing

East Central has served as a resource for addressing housing-related issues within the region. This is typically done by providing housing-related data to various organizations and identifying and discussing housing needs and potential solutions with communities and non-profits. Staff will assist local housing authorities with strategic plans; facilitate the development of local comprehensive plans; and provide assistance and guidance to local governments, developers, and other entities as they address the region's housing issues. Examples of this type of assistance and leadership in 2017-2018 include:

- Preparation of the Village of Sherwood Senior Housing Market Study for their Community Development Authority.
- Continued engagement with of the Neighborhood Partners Network (NPN) initiative led by Goodwill Inc. Neighborhood Partners works with neighborhood leaders to achieve effective, sustainable neighborhoods through grassroots, bottom up methods. By offering training, tools, coaching and support to neighborhood leaders, relationships are being forged in neighborhoods that can have transformational effects. In 2017, neighborhood leaders from 10 different neighborhoods located in Appleton, Menasha, Neenah, Harrison and Oshkosh have sought training and assistance through this program.
- The Gappers Network parallels the neighborhood work being done by the NPN and is working to create a network of government, non-profit and institutional staff and leaders who can better support citizens as co-producers of change in their neighborhoods. A well-attended Lunch n' Learn event was held in early 2018 to provide an educational and networking opportunity for people working in the "gap" between neighborhoods and institutions. To guide this effort, Commission published a framework document entitled *Rules & Tools for Good Gap Work* in 2017.



## Pilot Neighborhoods for the Neighborhood Partners Network, 2017

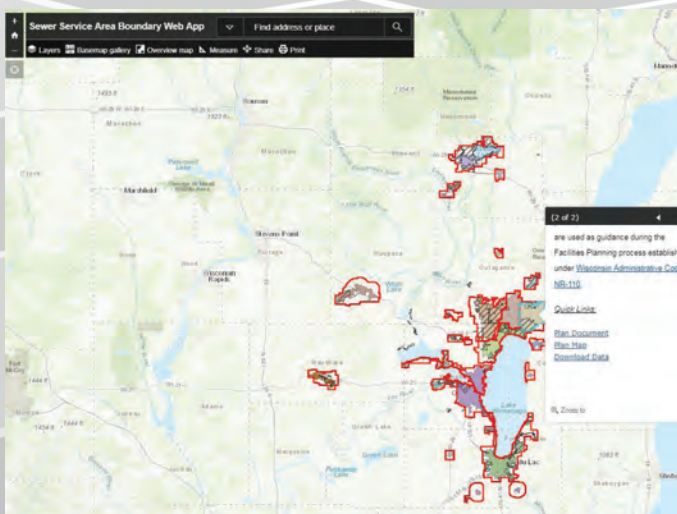


# Geographic Information Systems

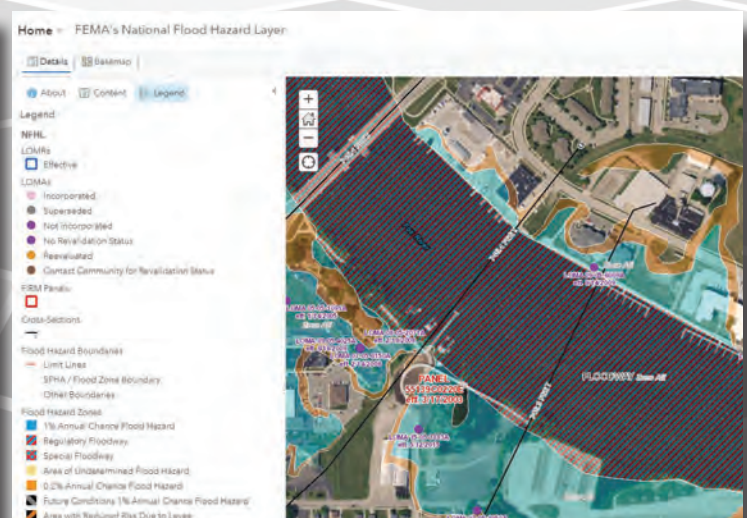
Geographic Information Systems (GIS) is defined as an advanced computer system capable of collecting, storing, viewing, and analyzing geographically referenced or spatial information. 'Geographically referenced' or 'spatial' simply means that the information can be viewed on a map and analyzed based on location and proximity. Examples of mapped places can include an address, a property or parcel, a named place such as a park or neighborhood, a census block, a zip code, or a city. By taking information stored in spreadsheets and tabular databases and displaying and analyzing it on a map, GIS becomes a powerful tool that directly supports the specialized needs of practitioners engaged in, among many others, the following fields:

- Regional Comprehensive Planning
- Community Facilities Planning
- Transportation
- Open Space and Recreation
- Economic Development
- Environmental Management
- Education
- Emergency Management.

The GIS Department has taken advantage of new online mapping technology by hosting interactive web maps and web applications that can be viewed in a browser, desktop, or mobile devices. The maps can be shared on blogs, via email, or embed it in a website. Examples of interactive web maps and web applications are below. The ECWRPC ArcGIS Online website address is <https://ecwrpc.maps.arcgis.com>.



*Sewer Service Area Boundary Web App* - view SSA boundaries and download plans, maps and boundary data.

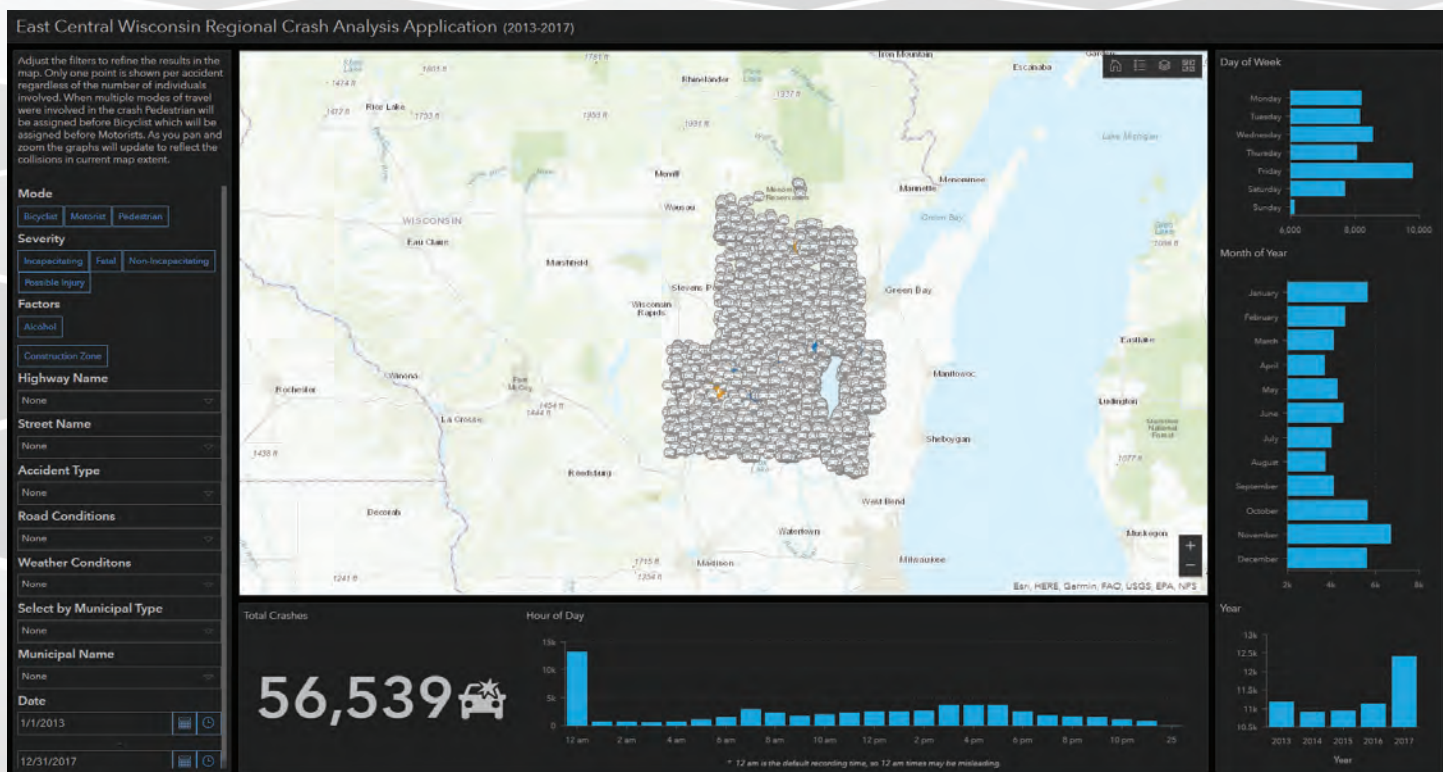


*FEMA's National Flood Hazard Map* - view floodplain boundaries and download data.

In the past, the Village of Hortonville would rely on a private commercial vendor to supply updated maps via CD in ArcReader format. The Village of Hortonville understands the basic principles and benefits of having a Geographic Information System (GIS), but cannot afford to staff a GIS position. In late 2016, the Village contacted ECWRPC to discuss how they could implement a new Geographic Information System (GIS) and take advantage of new technology (e.g., internet mapping). After discussing the needs of the Village, it was determined that ArcGIS Online would be the best solution. ArcGIS Online is a web-based mapping platform that will allow the Village staff to edit data in real-time with maps that are only editable/viewable by staff. ArcGIS Online also has the flexibility to make maps viewable to the public and, in certain situations, rely on the public for engagement. The Village agreed to a small contract with ECWRPC to set up/customize ArcGIS Online plus ECWRPC would provide technical assistance for training the users and any additional setup. (<https://hortonvillewi.maps.arcgis.com>).



An example of a web application is the East Central Wisconsin Regional Crash Analysis Application (2013-2017). Users can view crash locations that have happened in the last five years and apply various filters for quick analysis. Web applications are a great tool to allow further examination of the data. ECWRPC will be continuously updating the crash data as time allows. The Crash Analysis Application can be found at <https://bit.ly/2rzmqp6>.




# Recreation

In 1977, the Commission adopted its first regional open space and recreation plan. This plan has served the region well as a guide to the protection of many areas within the region for the purpose of providing public open space and recreational opportunities. The implementation of this plan has been occurring since its adoption over 30 years ago and is now supplanted by the *Year 2030 Regional Comprehensive Plan*. The *Year 2030 Regional Comprehensive Plan* (soon to be updated in 2019) recommendations, combined with the local actions taken by counties and municipalities, have kept the Commission involved in implementing its strategies at local and regional levels.

Highlights of work in 2017-18 include:

- The completion of three Comprehensive Outdoor Recreation Plans (CORP) and initiation of four additional CORPs for a variety of communities as shown on the map below.
- Surveying residents in the City of Clintonville (Waupaca County) on the best suited uses of the Seven Maples Park/Nature Area. Over 150 completed surveys indicated desires for new trails, a pavilion with restrooms, and picnic spots as the top three amenities. Three concept maps were also developed for the park/nature area.

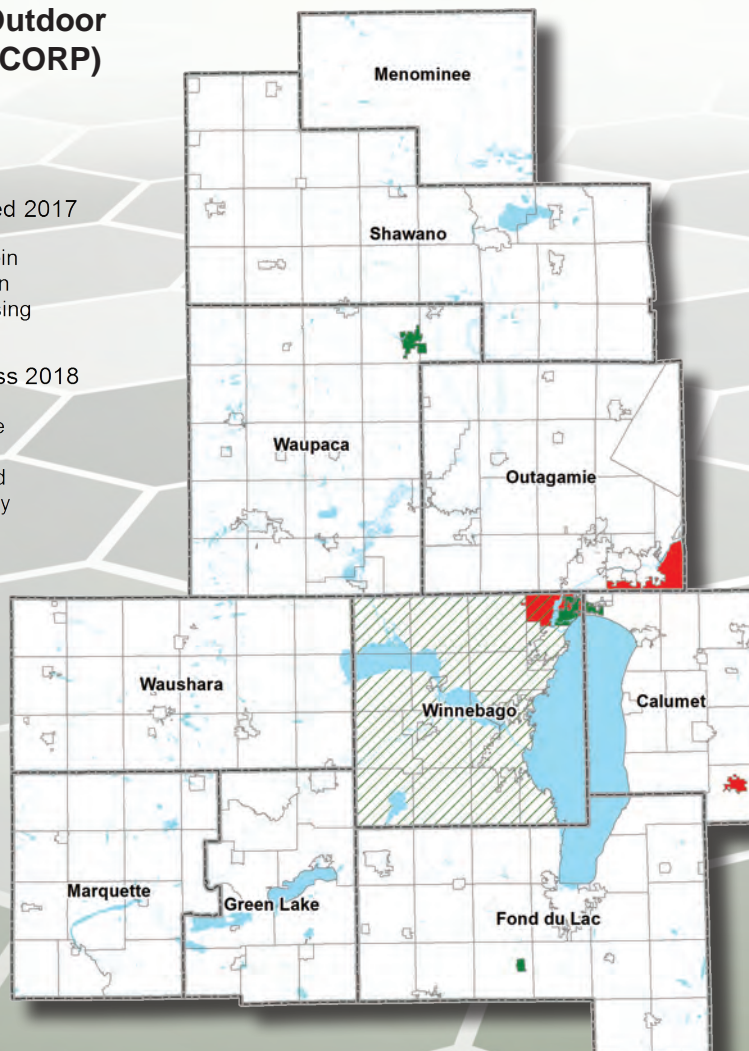
## Comprehensive Outdoor Recreation Plan (CORP) Status

 Completed 2017

City of New Holstein  
Town of Buchanan  
Village of Fox Crossing

 In Progress 2018

City of Clintonville  
City of Menasha  
Village of Oakfield  
Winnebago County





Homes near parks can sell for up to \$2,262 more than homes without parks nearby. *Winnebago County Economic Park Impact Study*

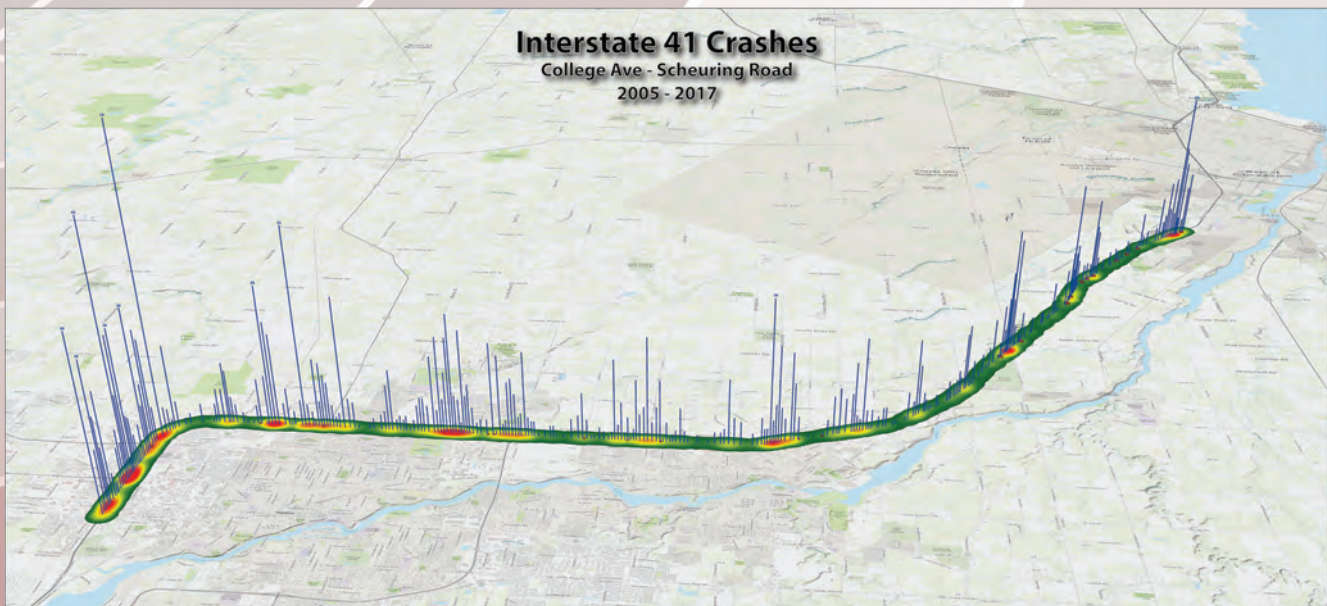
\$4,600,000 in state recreation grants awarded to 20 communities that ECWRPC has provided CORP's services for since 2007.

# Transportation

## Urban Transportation Planning

The Commission acts as the Metropolitan Planning Organization (MPO) for the Appleton (Fox Cities TMA) and Oshkosh Urbanized Areas and serves as staff of the Fond du Lac MPO Urbanized Area. A myriad of activities were conducted in 2017-18 associated with this program, including:

- Preparation of updates to the *Long Range Transportation/Land Use Plans* for each MPO through collaborative processes.
- Implementation of a Congestion Management Plan (Appleton TMA only).
- Development of the *2017 Transportation Improvement Programs (TIP)* for the Appleton (Fox Cities), Oshkosh and Fond du Lac Urbanized Areas. This program allocates federal and state funding to road and street improvement projects within the MPOs such as:
  - Town of Buchanan (Appleton MPO) – Emons Road from Pinecrest Blvd. to CTH N – Federal funding amount of \$1,617,634.
  - Town of Algoma (Oshkosh MPO) – Omro Road from Leonard Point Rd. to Brooks Lane – Federal funding amount of \$3,138,000.
  - Fond du Lac MPO – Military Road from Hickory Street to Western Avenue – Federal funding amount of \$2,524,000.
- Completion of the *WIS 15 Corridor Access Management Study* in the Towns of Greenville and Grand Chute (Outagamie County) between WIS 76 to Interstate 41. Working with HNTB a menu of options was created to improve operations at existing intersections by restricting access along with estimated costs.

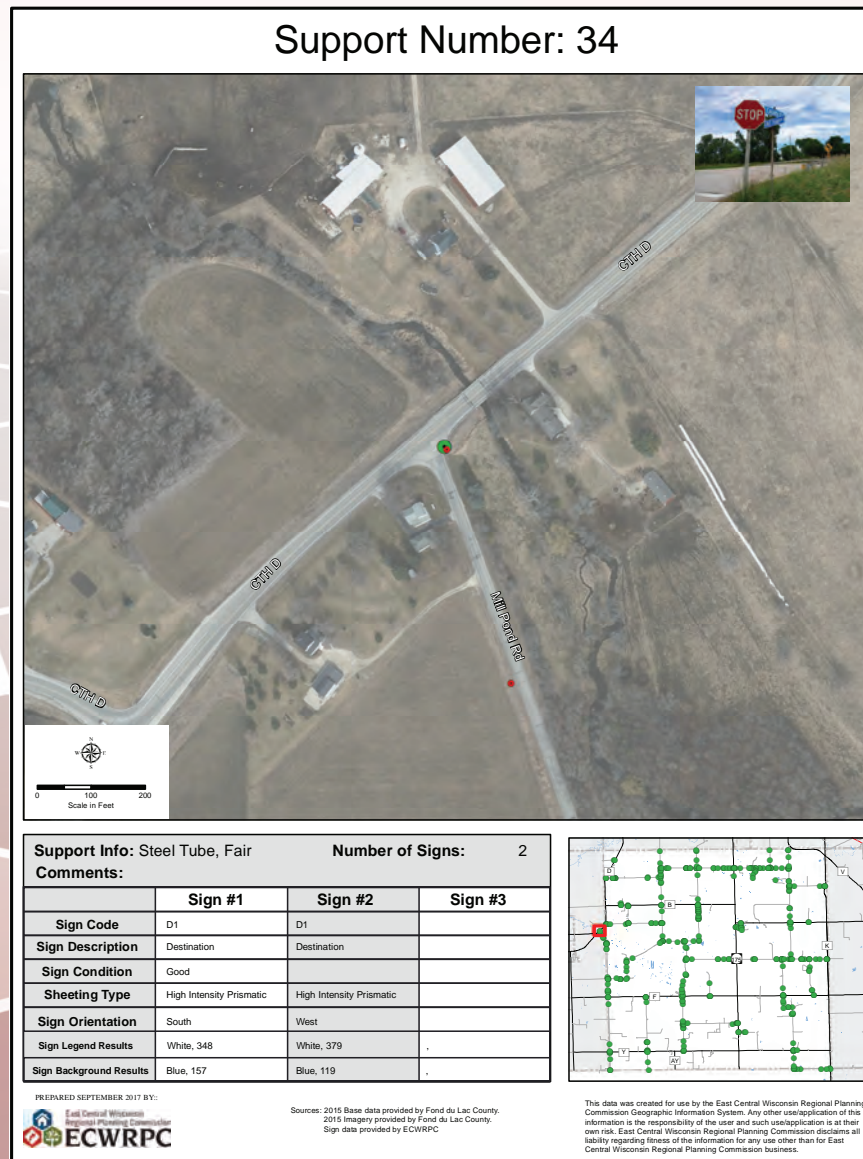


Currently working to show the safety concerns on I-41 between the 6-lane and 4-lane section between Appleton and Green Bay.

## Rural Transportation Planning

The Commission assists numerous local governments within the rural portions of the region with both short and long-term transportation planning projects and infrastructure management tools. Highlights of this work in 2017-18 include:

- Actively participated in the Shawano County WIS 29 Intergovernmental Work Group which has been exploring the corridor's assets and developing a framework for future intergovernmental growth agreements between the City of Shawano and neighboring Towns. Much of this effort has been focused on the CTH B corridor and lands surrounding the 29/47/55 interchange in the Town of Waukechon.
- Completed a road sign inventory for the Town of Byron in Fond du Lac County.
- Started a multi-year driveway access inventory for Fond du Lac County.



# Alternative Transportation

## Urban & Rural Transit Planning

The Commission's Urban and Rural Transit Planning Program is funded through state and federal programs and concentrates on providing service to cost-effectively meet the needs of communities. Valley Transit, the Oshkosh GO Transit System, and Fond du Lac Area Transit all surpassed the Americans with Disabilities Act (ADA) requirements by providing complementary paratransit services for more hours and at a higher service level than required for those individuals who are unable to use the fixed route systems. Specialized transportation services are also available at the county level throughout the region.

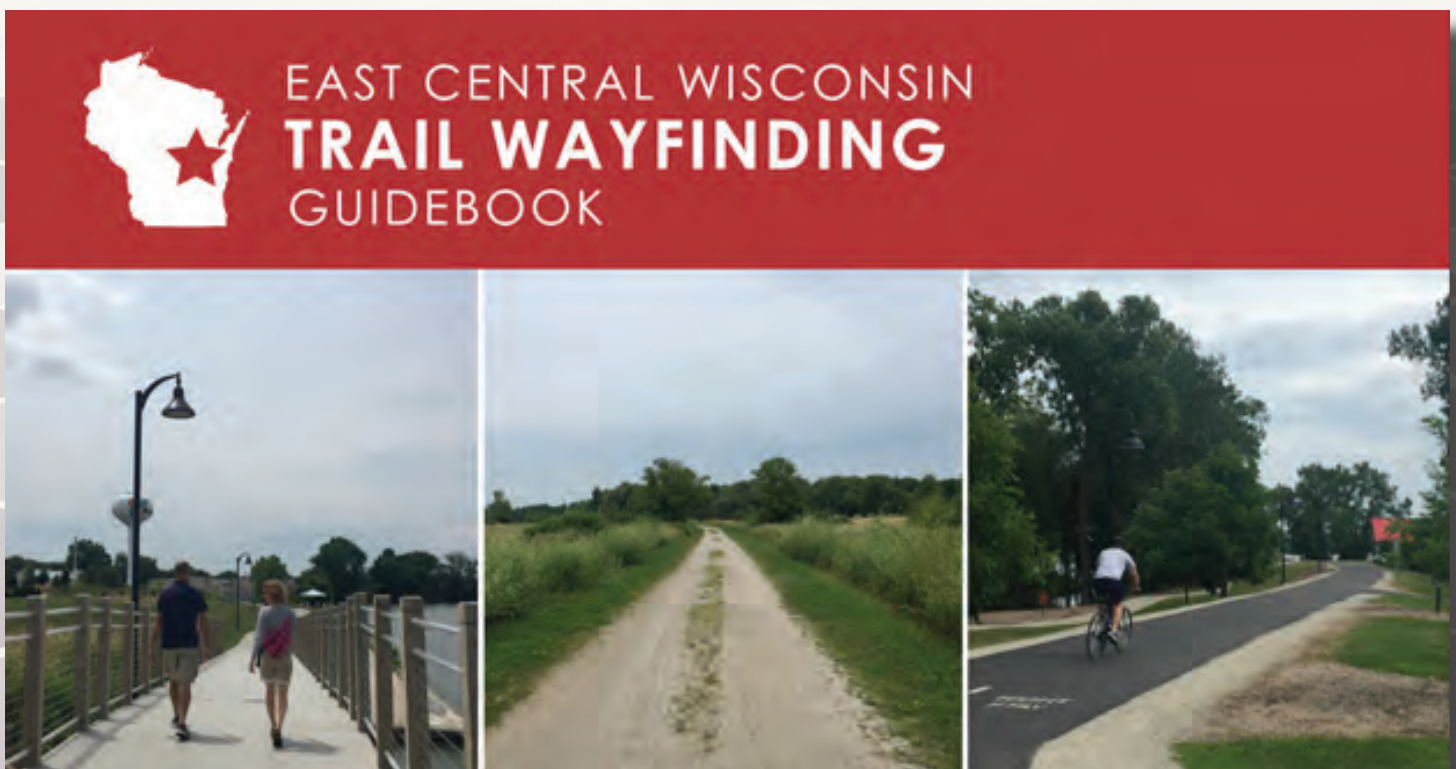
- GO Transit TDP – The City of Oshkosh's Transit Development (TDP) Plan began March of 2017 and will be completed this fall. SRF Consulting Group, Inc. has been contracted with to evaluate the underperforming Route 9 (serving the outlet mall, Walmart, YMCA and the southwest industrial park) and develop recommendations to better serve the area.
- Valley Transit – The City of Appleton's Transit Development Plan kicked off on March 1st of 2018 and will be completed by the end of 2019. SRF Consulting Group, Inc. in coordination with East Central and the City of Appleton are going to evaluate the entire system and recommend alternatives to the traditional hub and spoke system to better meet the needs of the public.
- East Central is in the process of updating the region's County Human Service Public Transportation Coordinated Plan, a five year plan dedicated to sharing resources both intra- and inter-county to assist the transportation disadvantaged public in getting rides based on their individual mobility needs.
- Planning is under way to improve access to transportation for people in Winnebago County. Winnebago County was among 10 communities from across the country selected to receive the Accessible Transportation Community Initiative grant offered by Easterseals Project Action Consulting (ESPAC) for a total of \$100,000, of which \$25,000 will be used for a two-day workshop, and \$75,000 will be used for implementation of the action plan developed at the workshop. Any unused portions of the \$25,000 for the workshop will be rolled over to the implementation. The two-day workshop took place September 19 and 20, 2017 where an action plan was developed around rural transportation coordination and education. Throughout 2018, the planning committee will be implementing a number of projects to address rural transportation related issues.



## Active & Healthy Transportation Program

East Central works with WisDOT, local governments, health partners, and bicycle/pedestrian advocacy groups to develop and coordinate multimodal road systems and activities. Local bicycle and pedestrian networks are critical to ensuring the transportation needs of all community members are met.

- Assisted as a subcontractor with Toole Design Group to facilitate the completion of the *Connecting People and Communities: Winnebago County Bicycle and Pedestrian Plan*. Winnebago County was awarded Technical Assistance project to assist with implementation.
- To help community members and tourists better navigate the bicycle and pedestrian network in the region, East Central Wisconsin Regional Planning Commission contracted with Alta Planning + Design to create a regional wayfinding standards document. Through input from community partners, sign designs and guidelines were created that can be used by any community through the network to help users find their destination, discover key features, and feel confident navigating the bicycle and pedestrian amenities in the region. The final plan was released in December 2017.

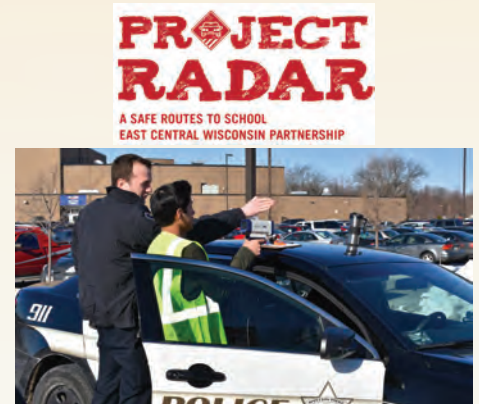


# Safe Routes To School

In October 2009, ECWRPC launched a streamlined Regional Safe Routes to School (SRTS) Program to assist local SRTS coalitions to plan, develop and implement projects and activities. Safe Routes to School engages and empowers schools and communities to improve the health and well-being of children and families by advocating safe walking and bicycling.

## Project RADAR (Reminding All Drivers About Responsibility)

The Regional Safe Routes to School program partnered with Leadership Fox Cities to create Project RADAR. The goal of this program is to create awareness of safe driving habits around school zones by developing curriculum using radar velocity speed guns. Curriculum materials were developed in math, physics, and career preparedness. Schools can check out a toolkit including radar velocity speed guns, curriculum materials, safety vests, yard signs, and banners.



**Project RADAR was successfully piloted at Appleton East High School and Little Chute High School in spring of 2017. Little Chute High School piloted the physics curriculum and Appleton East High School piloted the career preparedness curriculum.**

## Frequent Walker Program/Mileage Club

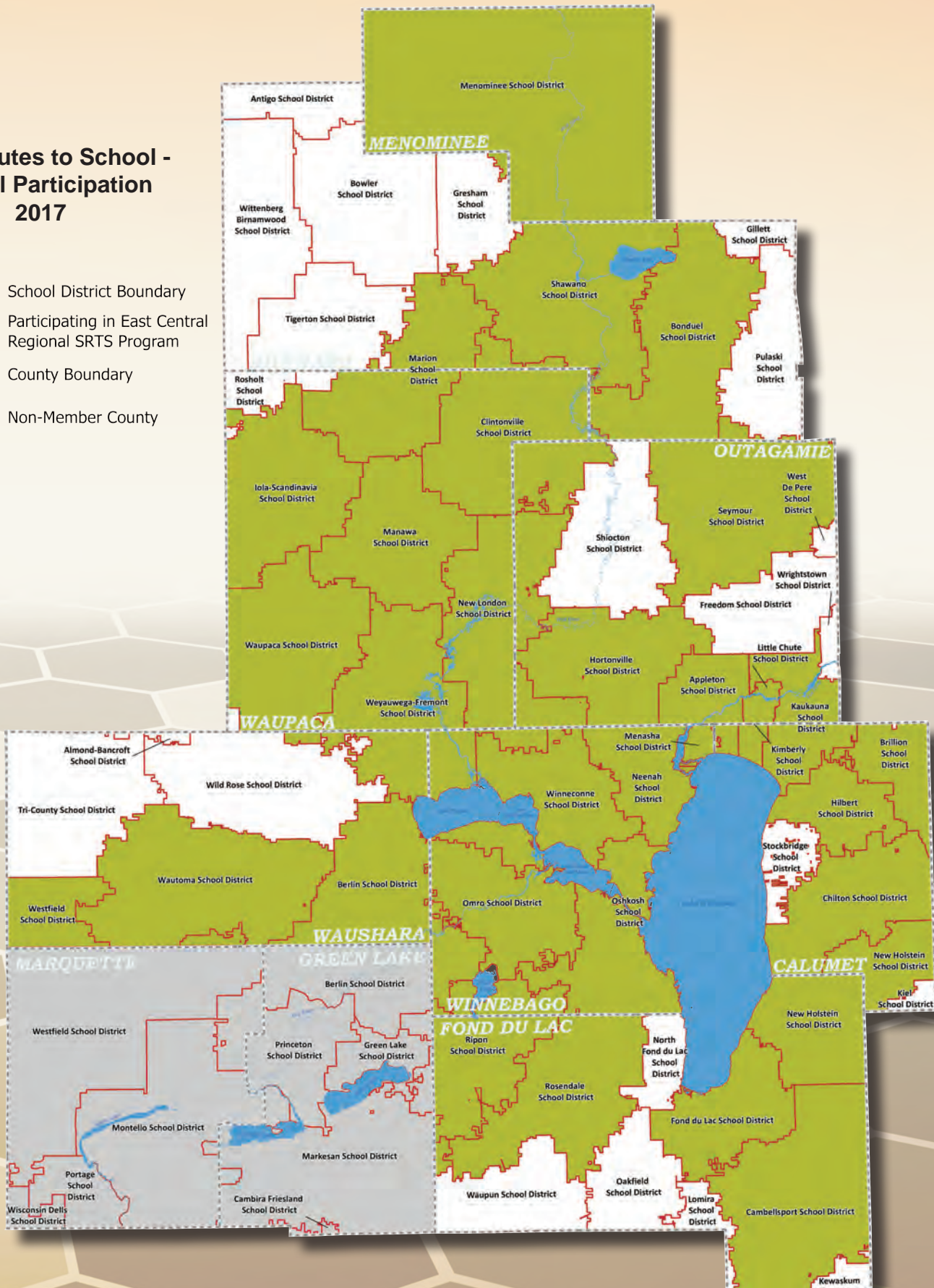
Frequent Walker Programs encourage students to walk before, during, and after school by making it fun and rewarding. This program provides students who cannot walk to school the opportunity to be active during the day. Students walk along a designated walking route to track their physical activity. To reduce the amount of time spent on tracking mileage, the Safe Routes to School program partnered with Fitness Finders to provide schools the opportunity to track their mileage electronically or by using paper punch cards.



**Hortonville Elementary School currently has 429 students participating in their Frequent Walker program and have totaled over 7,371 miles walked since their program started.**

Safe Routes to School -  
School Participation  
2017

- School District Boundary
- Participating in East Central  
Regional SRTS Program
- County Boundary
- Non-Member County



# Outreach & Education

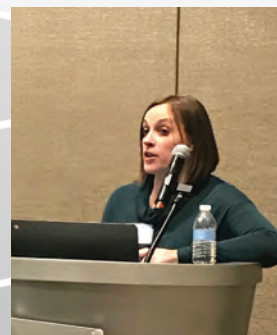
The Commission and its staff is viewed as a leader in regional planning by its peers. As such, numerous requests are made each year to share its work and experiences. Outreach and education to the region's communities and its peers is of great importance so that we can help elevate the stature and value of planning. In 2017, Commission staff participated in the following national, state, and local events to help share our experiences and knowledge:

## National

- Melissa Kraemer Badtke presented at the Annual Transportation Research Board (TRB) Conference in Washington D.C. on the national recognition of the Commission's efforts to incorporate health in all aspects of our planning programs.
- Sarah Van Buren presented at the Annual Department of Defense-Office of Economic Adjustment (DoD-OEA) Defense Industry Adjustment convening of all grantees in Arlington, VA. Sarah presented on the successful outreach and awareness efforts done through the Initiative 41 program.
- Tom Baron and Melissa Kraemer Badtke presented on topics related to a previous "Plan 4 Health" grant project at the National American Planning Association Conference in New York City.
- Melissa Kraemer Badtke presented on the *Transportation and Health Tool Workshop* as part of an American Public Health Association (APHA) webinar.
- Tyler DeBruin, Melissa Kraemer Badtke, and staff from Alta Planning and Design lead a mobile workshop at the 2017 National Walking Summit titled "Identifying Safe Routes to School Infrastructure Gaps Using Walk Assessments and Mobile Technologies."
- Melissa Kraemer Badtke along with Fox Valley THRIVES core team members presented at the 2017 National Walking Summit with a presentation titled "Picture This! Engaging Those Who Use Active Transportation in Photomapping."

## State

- Melissa Kraemer Badtke, Kim Biedermann, and Tom Baron presented at the American Planning Association-Wisconsin Chapter annual conference in Milwaukee. The presentation summarized a previously funded "Planners 4 Health" project.
- Eric Fowle, in concert with two other RPC Directors, presented a session on "What Regional Planning Commissions Can Do For You" at the statewide Annual Wisconsin Town's Association Conference in Steven's Point.
- Winnebago County, East Central WI Regional Planning Commission, and Toole Design Group received a WI-APA Award for their work on the *Connecting People and Communities: Winnebago County Bicycle and Pedestrian Plan*.



Sarah Van Buren  
presenting at DoD-  
OEA



Melissa Kraemer Badtke  
presenting at the TRB  
Conference

## Regional/Local

- Melissa Kraemer Badtke was the Keynote Speaker at the Weight of the Fox Valley Conference held in Neenah on May 2017.
- Melissa Kraemer Badtke, Kim Biedermann, and Ashley Tracy presented to the UW Oshkosh Nursing Students class describing how the built environment can affect community and an individual's health.
- Kim Biedermann served as panelists in the Equity, the Environment, and the Future of Transportation Panel at Fox Valley Technical College to discuss issues and opportunities for making transportation more equitable, accessible, and greener in the Fox Valley.
- On June 20th East Central staff facilitated an event to learn about partnership, process and policy skills needed to increase health and planning. The event, held in Madison, is part of a Planners4Health grant that East Central is managing for the American Planning Association – Wisconsin Chapter. Over 50 planners, public health and other professionals throughout Wisconsin attended the event. Eric Weiss and Jill Chamberlain from Minnesota presented on their collaboration efforts with public.
- ECWRPC Miniconference “Zoning: A New Playbook for Addressing Controversial Land Uses” was held at the Shawano County Park Pavilion from 9:00 a.m. - Noon, 70 people attended the event.
- In June 2017, ECWRPC hosted a workshop about Complete Streets policies. Emiko Atherton and Christopher Zimmerman from Smart Growth America presented to over 60 community representatives throughout the region. In December 2017, an interactive workshop was held with over 20 community representatives to discuss the components of a Complete Streets policy for the region, and what their visions are for a regional Complete Streets policy. A draft regional Complete Streets policy was released in March 2018.



- On September 19 and 20, 2017, a two-day workshop took place at the Town of Algoma Hall as part of an Easterseals grant Winnebago County received to address rural transportation needs. The workshop was facilitated by Easterseal's Project Action Consulting firm who helped Winnebago County participants put together an action plan on how the grant funds should be spent. The action plan focused on healthcare partnerships, education and marketing of current services and a coordination effort to fill transportation gaps. Stay tuned for more project specifics to come in 2018!



400 AHNAIP STREET, SUITE 100  
MENASHA, WISCONSIN 54952-3100  
PHONE (920)751-4770  
www.ecwrpc.org

PRESRT STD  
U.S. POSTAGE PAID  
Menasha, WI 54952  
Permit No. 94

### Executive Staff

**Eric Fowle, AICP** - Executive Director  
**Walt Raith** - Assistant Director & MPO Director

### Technical Staff

**Tim Badtke** - IT Coordinator  
**Mike Zuege** - GIS Coordinator  
**Adam Pfefferle** - GIS Specialist II  
**Kyle McNair** - GIS Assistant  
**Tanner Russell** - GIS Assistant

### Administrative Staff

**Pam Scheibe-Johnson** - Controller  
**Erin Bonnin** - Administrative Coordinator

### Planning Staff

**Kathy Thunes, P.E.** - Principal Planner  
**Trish Nau** - Principal Planner  
**Melissa Kraemer Badtke** - Principal Planner / Active Transportation  
**Tom Baron, AICP** - Principal Planner  
**Dave Moesch** - Associate Planner  
**Todd Verboomen** - Associate Planner  
**Nick Musson** - Associate Planner / Transit  
**Sarah Van Buren, AICP** - Associate Planner  
**Kim Biedermann** - Associate Planner / Bicycle & Pedestrian Coordinator  
**Scott Konkle** - Planning Specialist II / NR-135 Mine Reclamation  
**Joe Huffman** - Planner  
**Kolin Erickson** - Planner  
**Ashley Tracy, CHES** - SRTS Planner  
**Tyler DeBruin** - SRTS Planner

### 2017 Commission Officers

**Jerry Erdmann, Shawano**  
Chair

**David Albrecht, Winnebago**  
Vice-Chair

\*\*\*

**Eric W. Fowle, AICP**  
Executive Director

**Walt Raith**  
**Erin Bonnin**  
Editors

**Michael Zuege**  
Cover Design  
and Layout



The East Central Wisconsin Regional Planning Commission's planning program is supported by federal assistance. Specific funding for this report was provided by the Federal Highway Administration, Federal Transit Administration, the Wisconsin Department of Transportation, the Economic Development Administration, Wisconsin Department of Administration and the Wisconsin Department of Natural Resources. The contents of this document do not necessarily reflect the official views and policies of the U.S. Department of Transportation, Federal Highway or Transit Administrations.