



# TRI-COUNTY EXPANSION

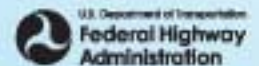


U.S. Department of Transportation  
Federal Highway  
Administration

# WIS 441 Tri-County Project

**MPO/RPC/DOT Conference**

**August 25, 2016**



# Project Schedule

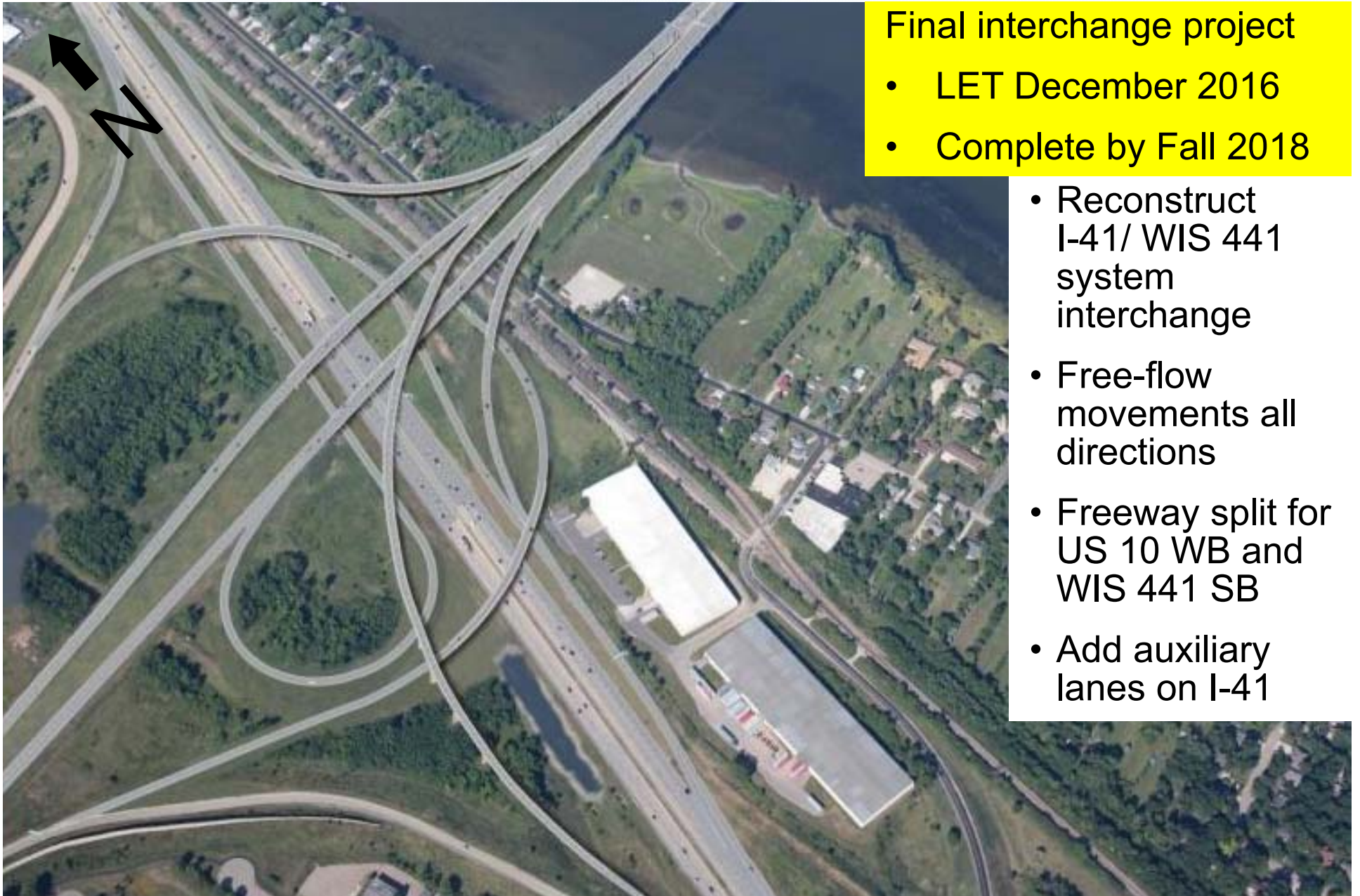
Function	2012	2013	2014	2015	2016	2017	2018	2019	2020	2021
Design										
Real Estate										
Utilities										
Construction										

# Project Overview





# I-41/US10 Interchange



## Final interchange project

- LET December 2016
- Complete by Fall 2018
- Reconstruct I-41/ WIS 441 system interchange
- Free-flow movements all directions
- Freeway split for US 10 WB and WIS 441 SB
- Add auxiliary lanes on I-41

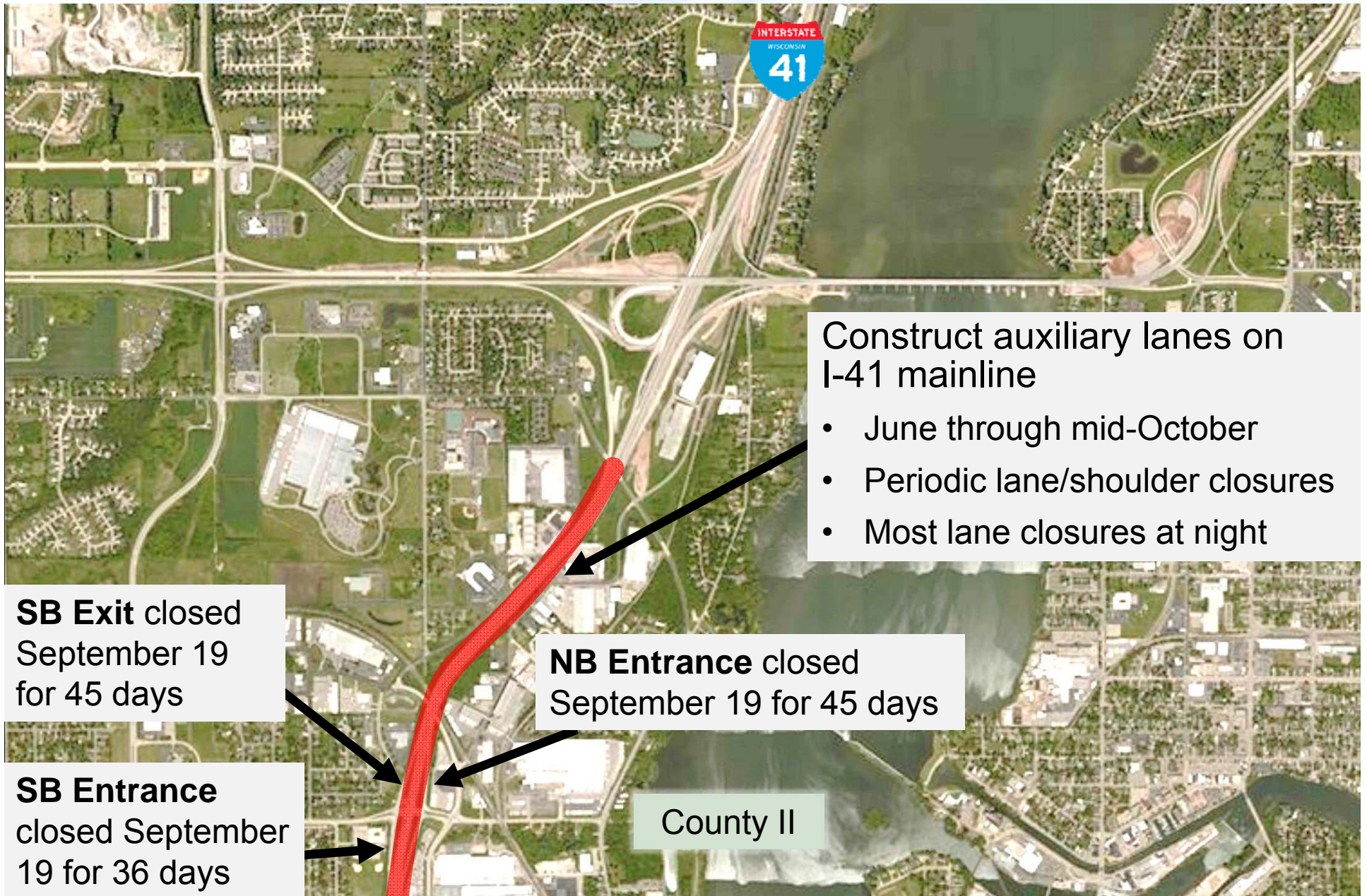


# Rock Blasting for Pond Construction





# I-41 Auxiliary / Widening





# I-41 and American Drive





# American Drive

- 30 day closure complete
- Opened to traffic August 9<sup>th</sup>



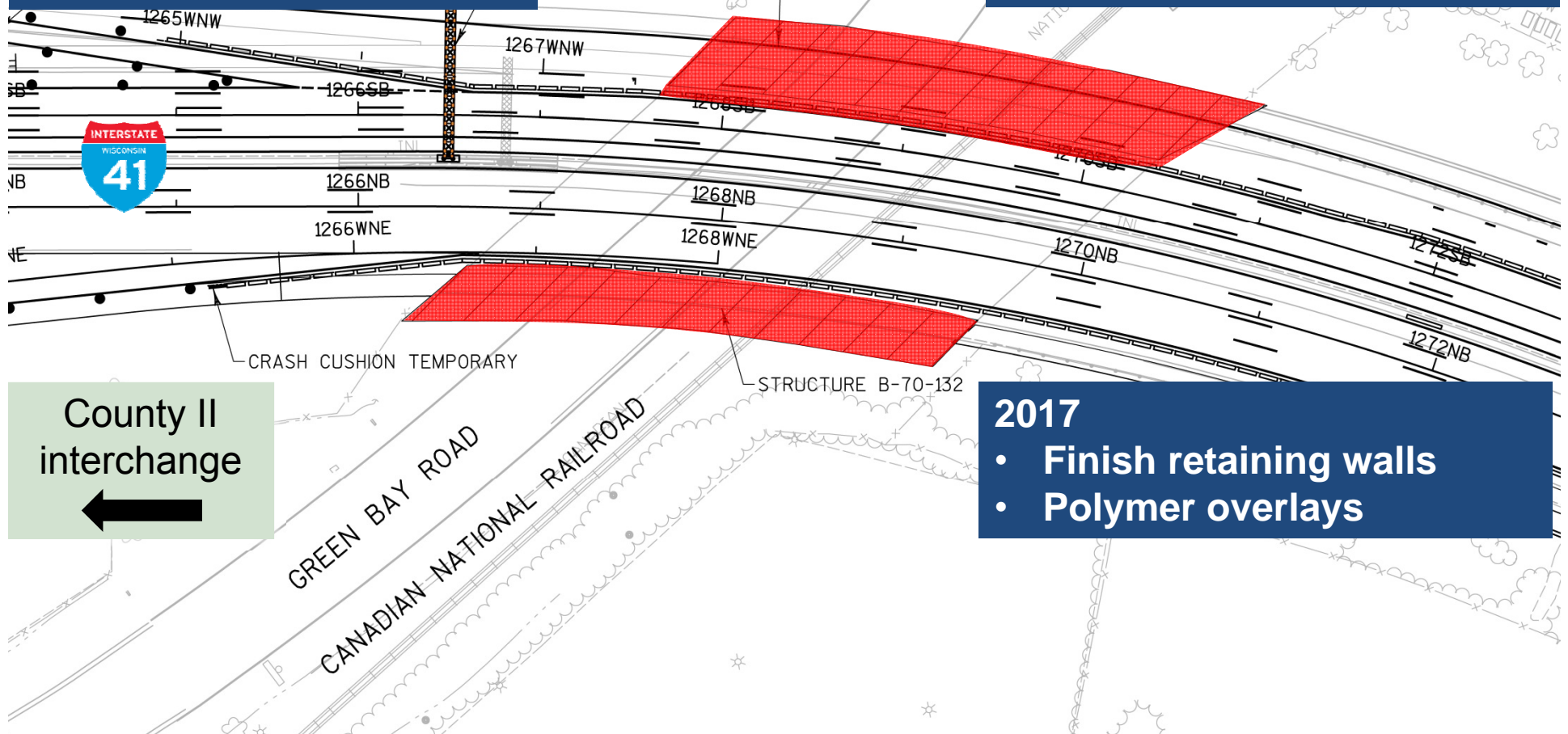
# I-41 over Green Bay Road

## Construction

- Intermittent nighttime closures of Green Bay Road
- Nighttime construction noise and lighting

## 2016

- Remove outside parapets
- Widen pier and abutment
- Place girders
- Pour deck
- Install new parapets



## 2017

- Finish retaining walls
- Polymer overlays

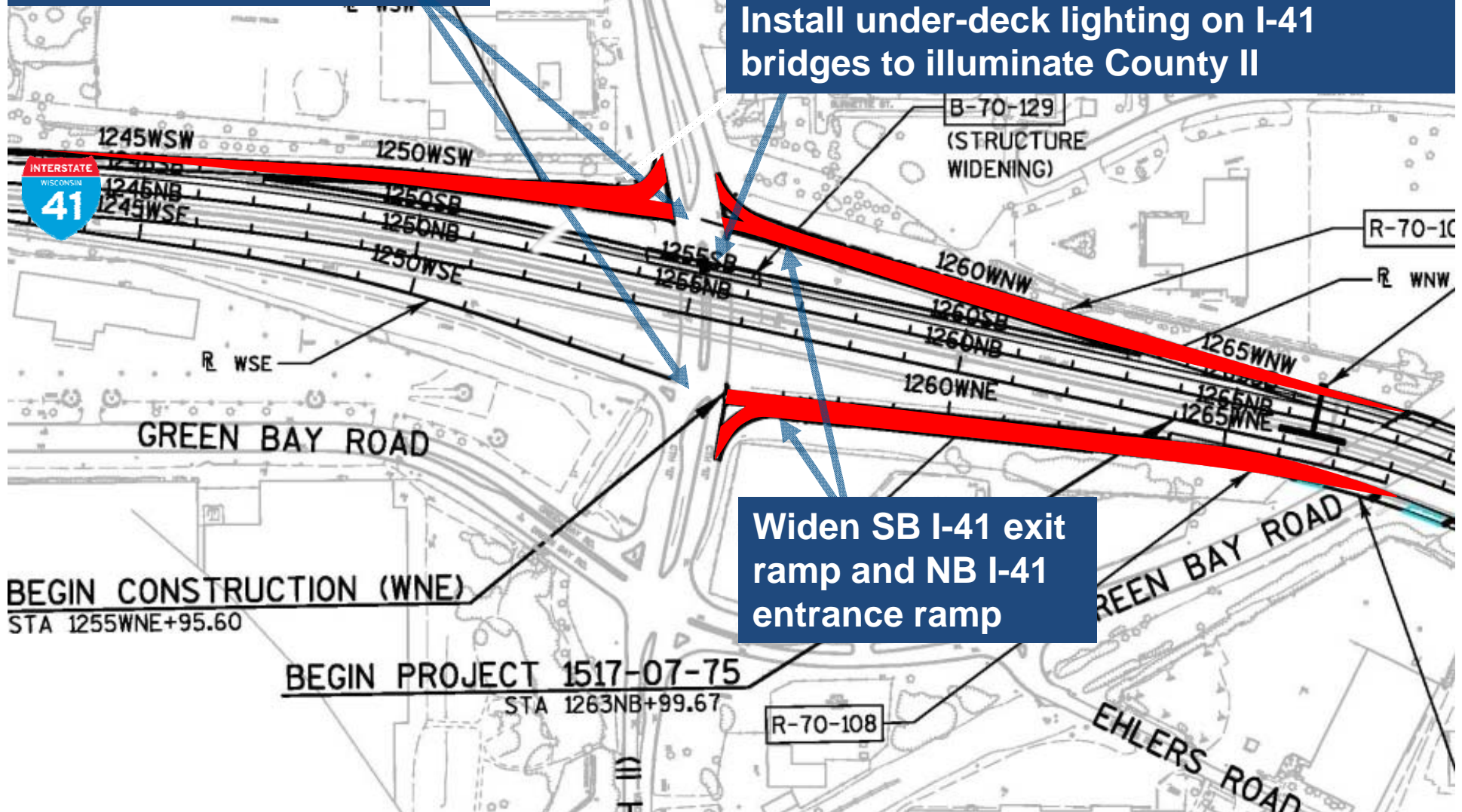


# I-41 and County II interchange

New signals at ramp intersections with County II (Winchester Rd)

Widen southbound I-41 bridge over County II

Install under-deck lighting on I-41 bridges to illuminate County II



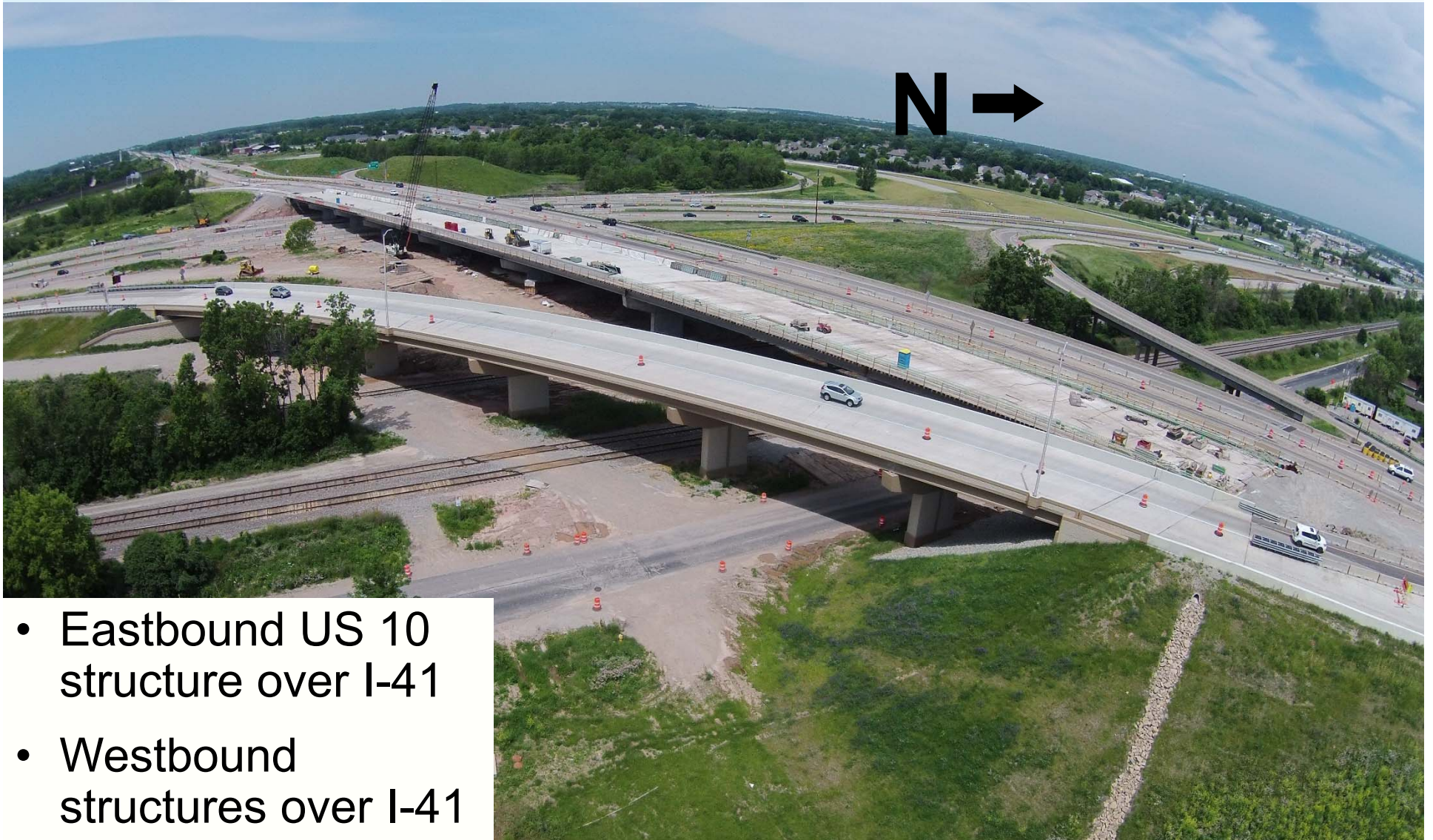
# Little Lake Butte des Morts Structures



- Construct 2<sup>nd</sup> parallel bridge over LLBDM
- New concrete structure closely matches existing
- Spans will vary from existing, more cost effective
- Stain existing and new structures to match
- Structures will have overhead bridge deck lighting



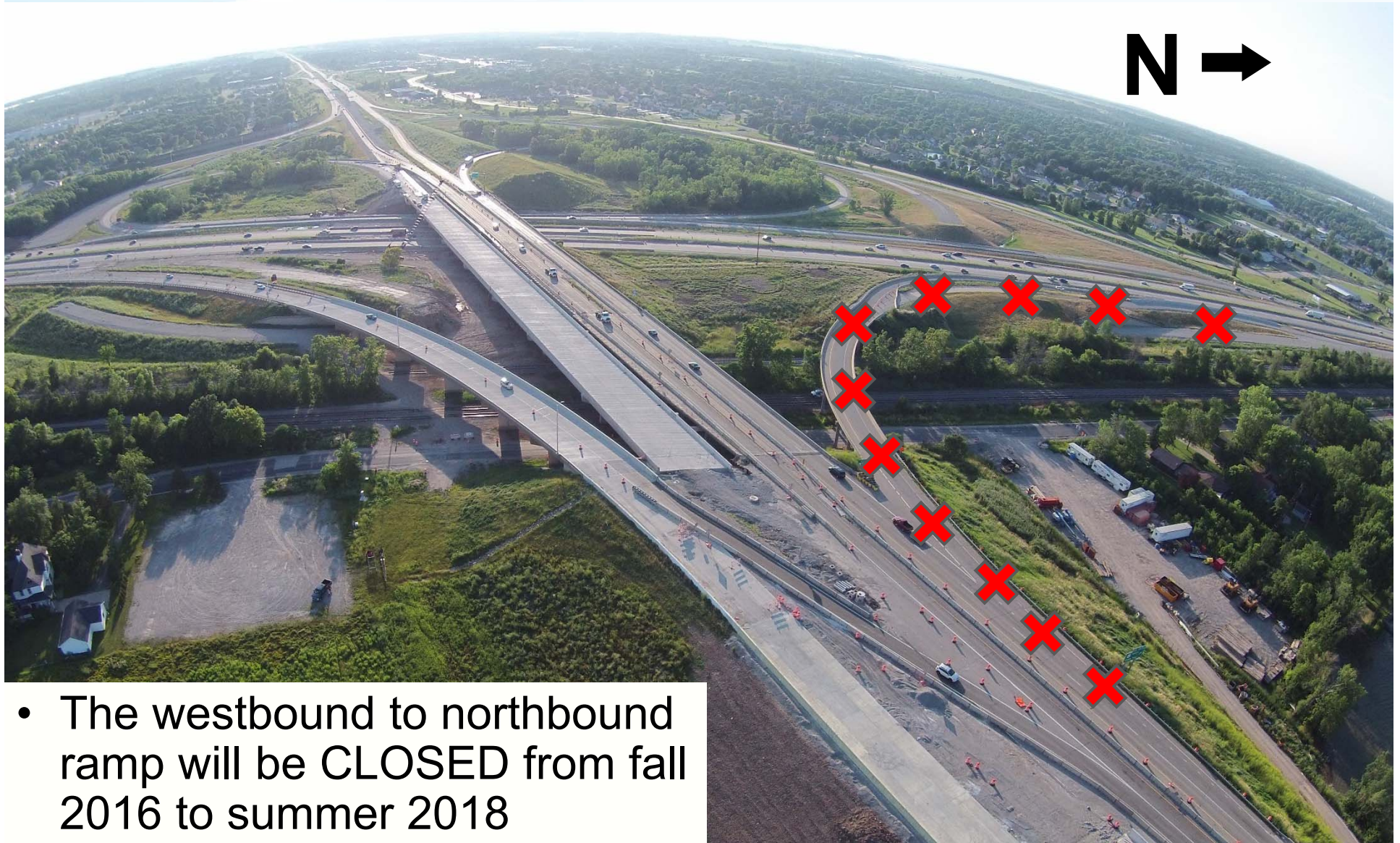
# I-41 System Interchange



- Eastbound US 10 structure over I-41
- Westbound structures over I-41



# I-41 System Interchange



- The westbound to northbound ramp will be CLOSED from fall 2016 to summer 2018



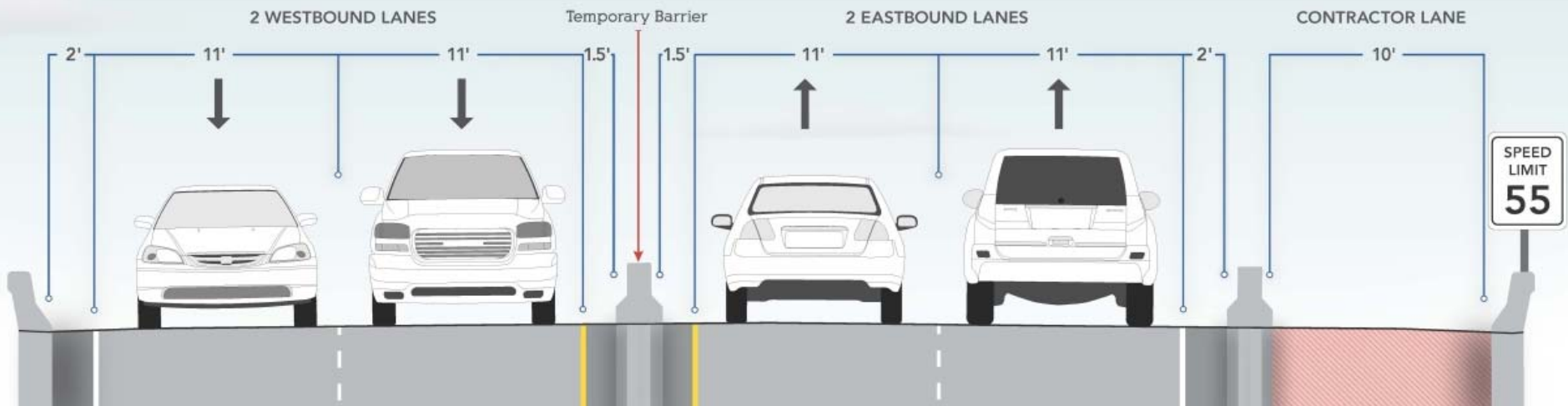
# LLBDM Crossing



- Fall 2016:
  - Traffic shift to the new LLBDM bridge
  - Reconditioning work begins on the existing bridge

# Existing LLBDM Traffic

Current Stage  
through Fall of 2016



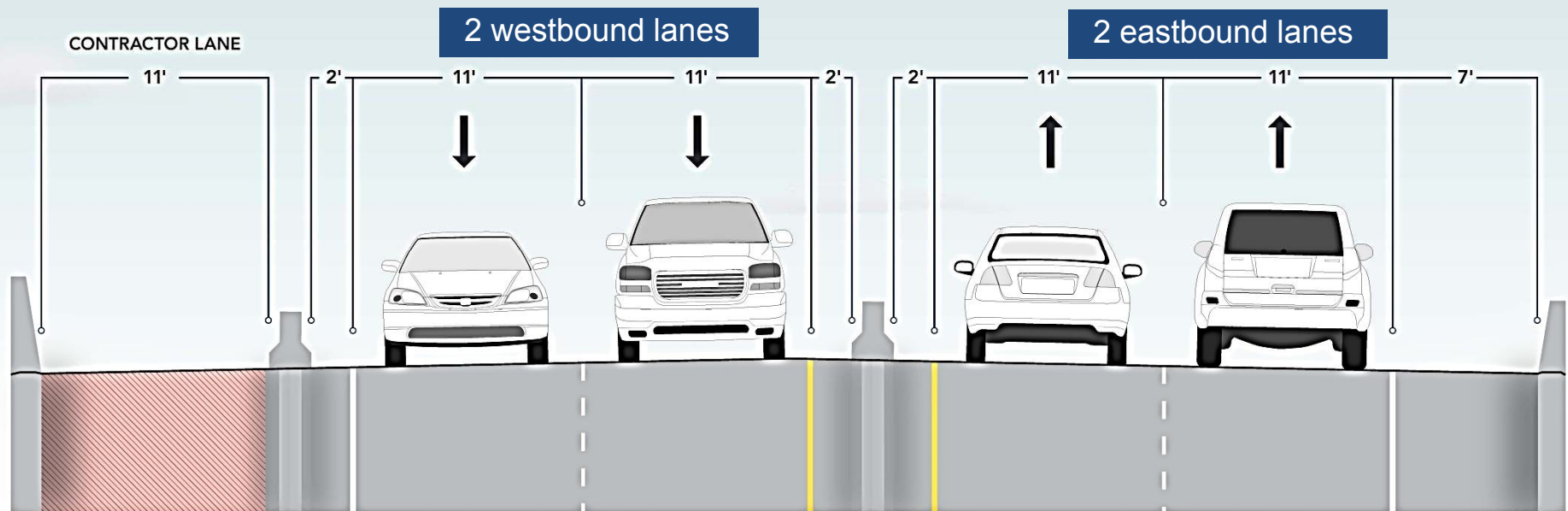
## Contractor lane

- Facilitates the rehabilitation of the existing bridge



# Upcoming LLBDM Crossing

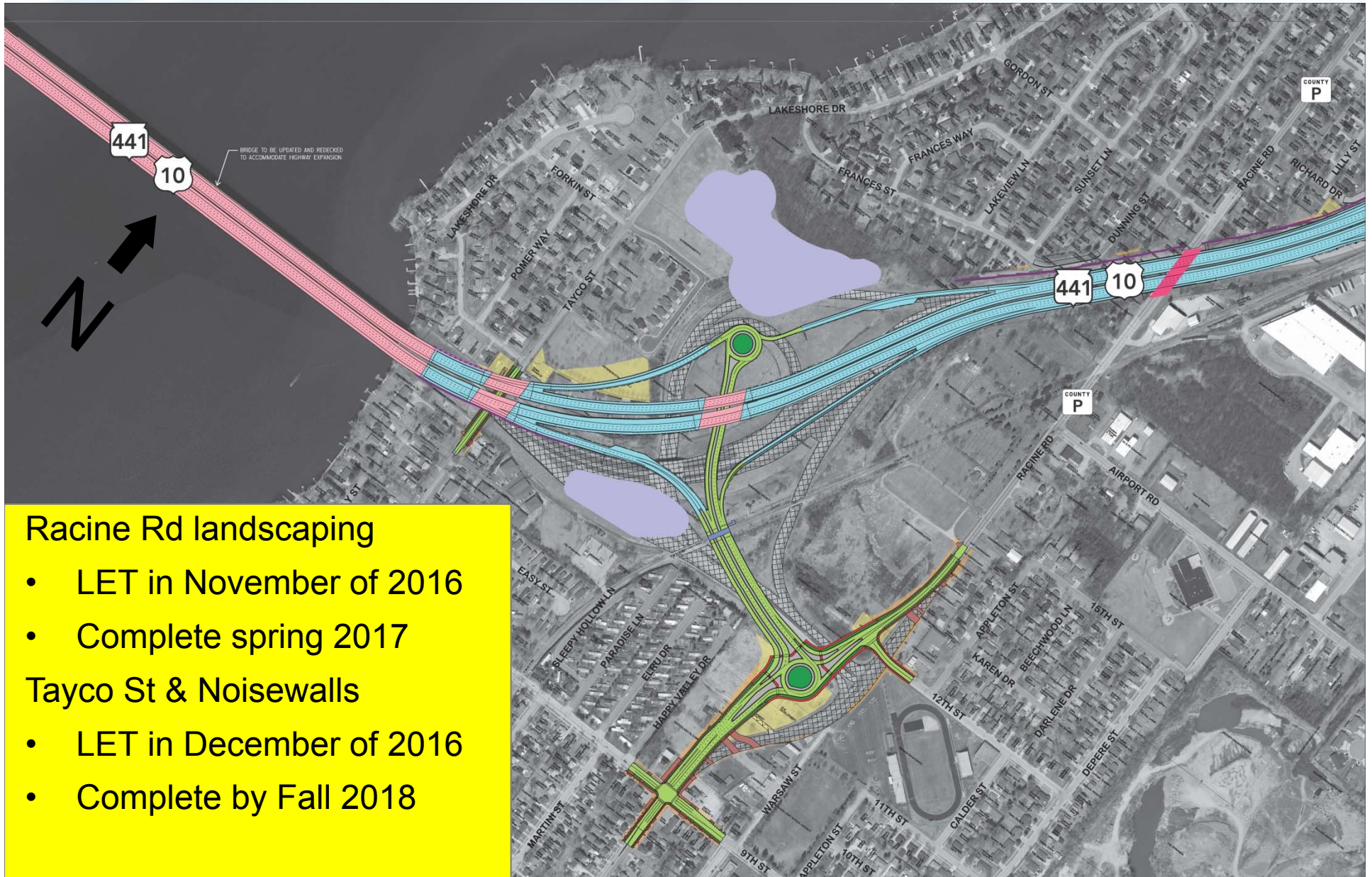
Fall of 2016 through  
Summer of 2018



## Contractor lane

- Planned on the newly constructed bridge between fall 2016 and summer 2018
- Facilitates the rehabilitation of the existing bridge

# County P/Racine Rd Interchange



## Racine Rd landscaping

- LET in November of 2016
- Complete spring 2017

## Tayco St & Noisewalls

- LET in December of 2016
- Complete by Fall 2018



# Racine Road Interchange



- Interchange to open November 2016
- WB on-ramp will remain closed until summer 2018



# Racine Road Reconstruction



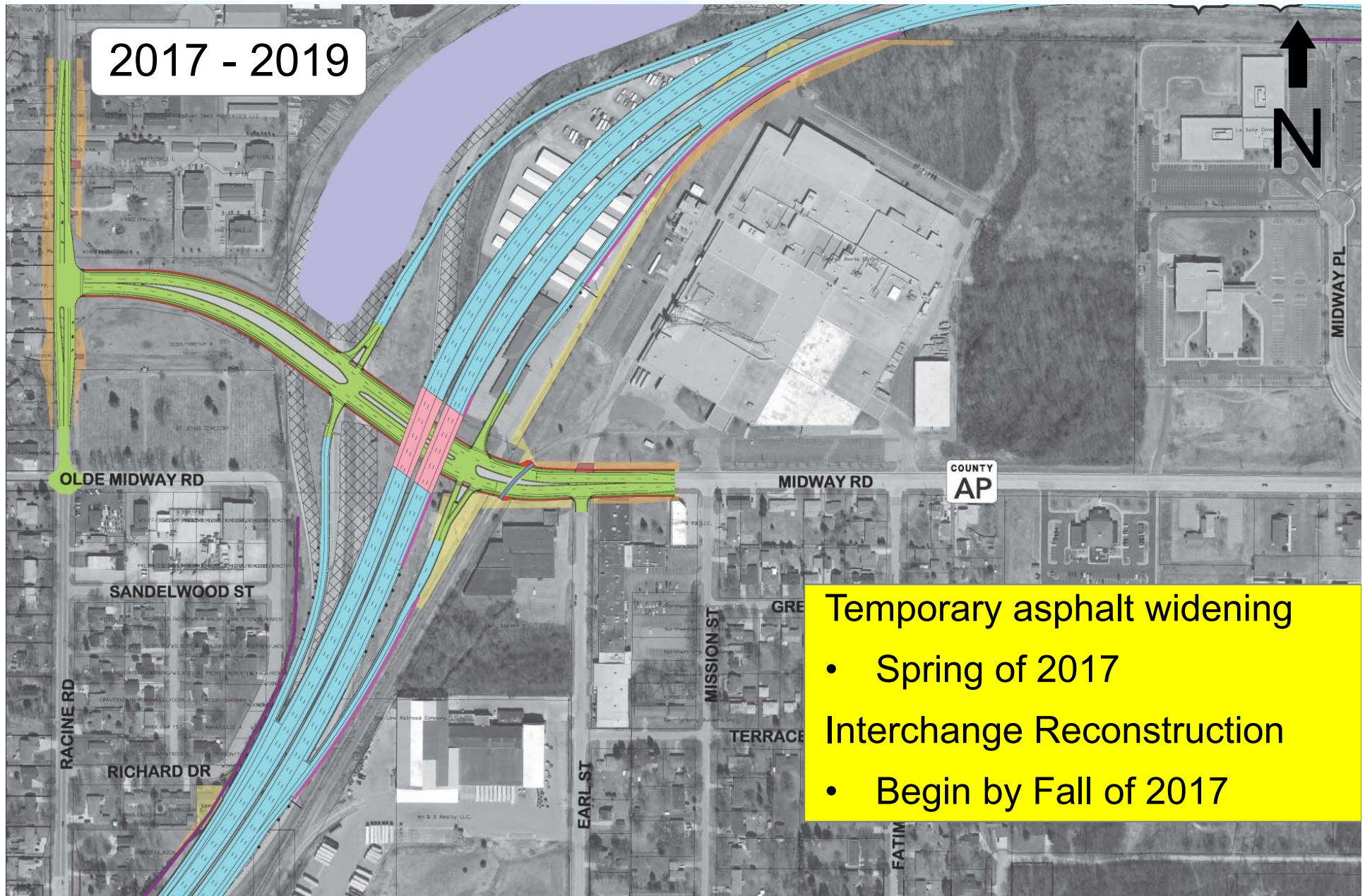
9<sup>th</sup> Street

- Long term road closure:
  - 9<sup>th</sup> St and 12<sup>th</sup> St intersections opened on Monday
  - **Oct 4:** Racine Road to open





# County AP/Midway Rd Interchange



## Temporary asphalt widening

- Spring of 2017

## Interchange Reconstruction

- Begin by Fall of 2017



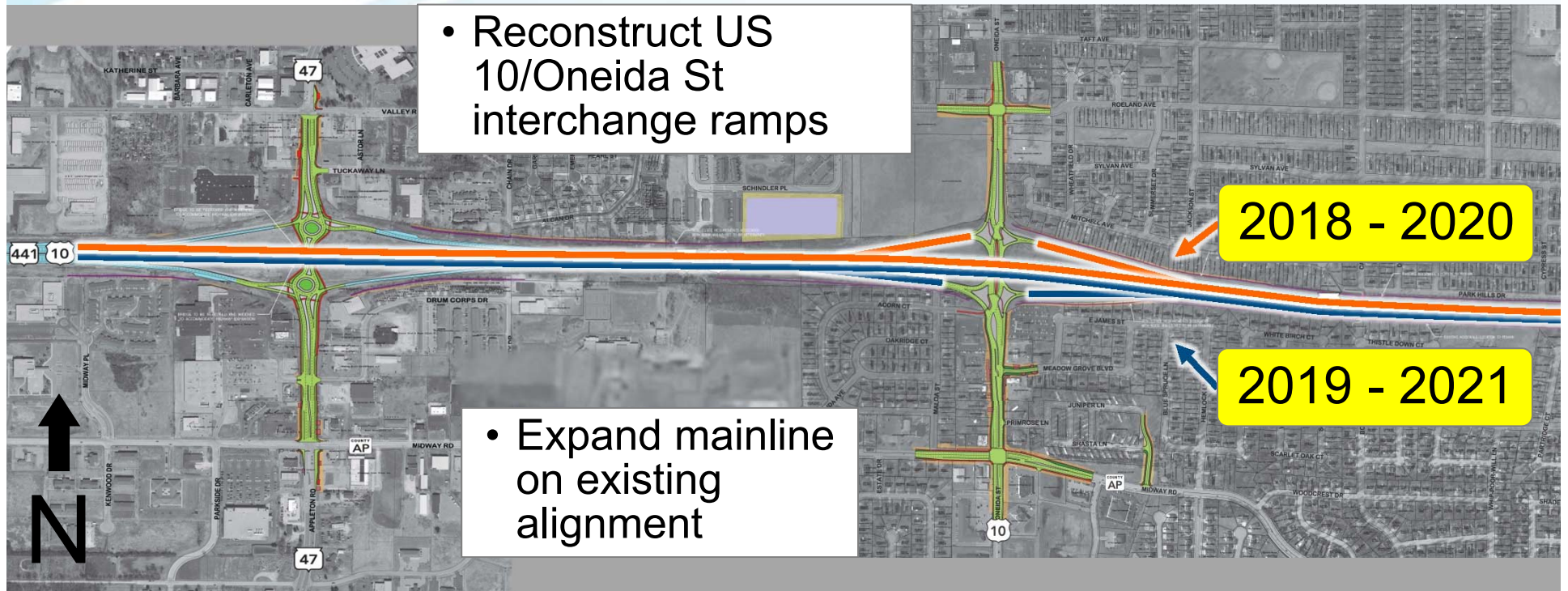
# WIS 47/Appleton Rd Interchange

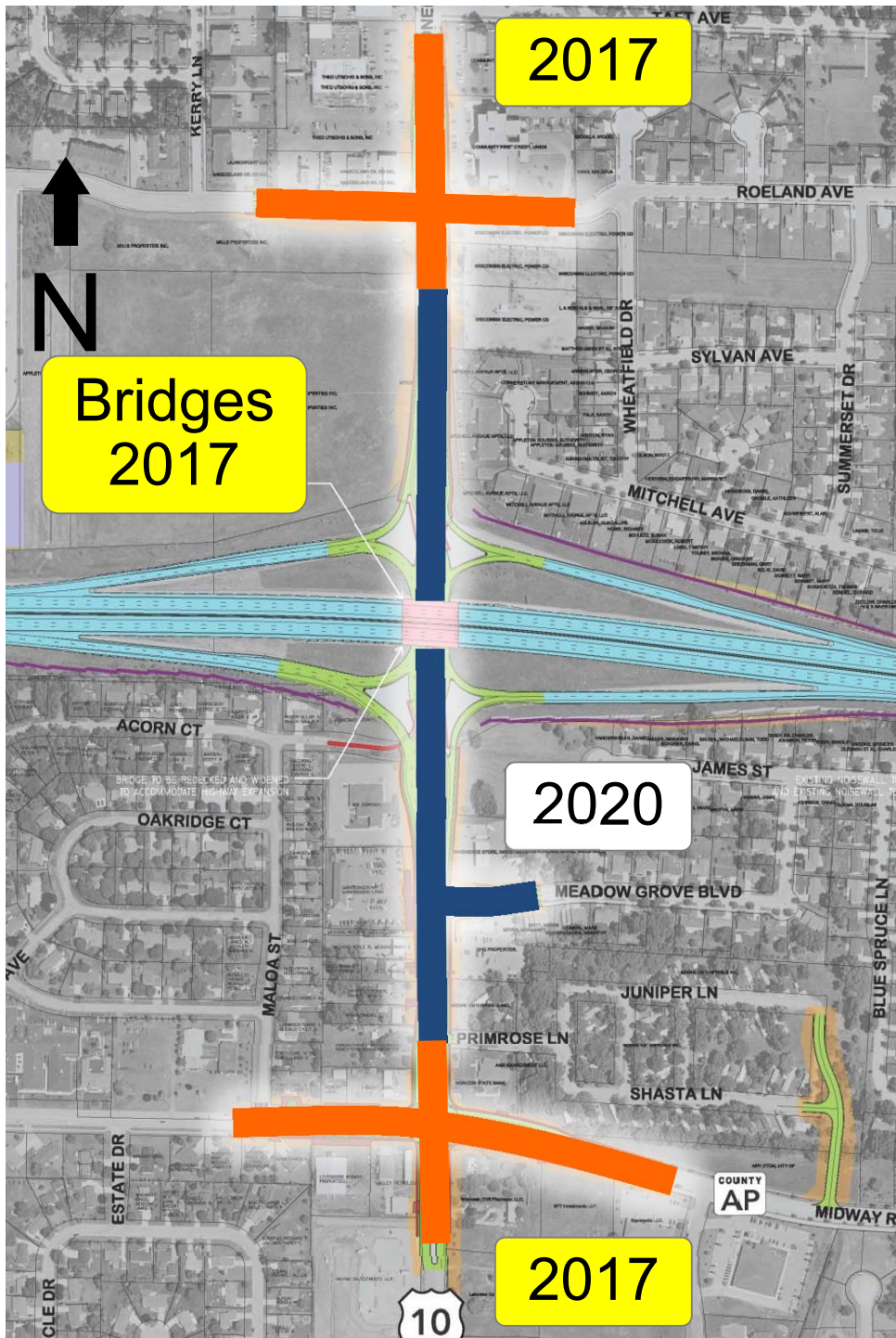


Appleton Road – Completed in 2015



# US 10/Oneida St Interchange Ramps and WIS 441 Mainline





# US 10/Oneida St Interchange

## WIS 441 Bridge Widening

- LET December 2016
- Complete Fall 2017

## Midway and Valley Rd Intersections

- LET May 2017
- Complete Fall 2017

## Utility Relocations

- Spring/Summer 2017





# Diverging Diamond Interchange

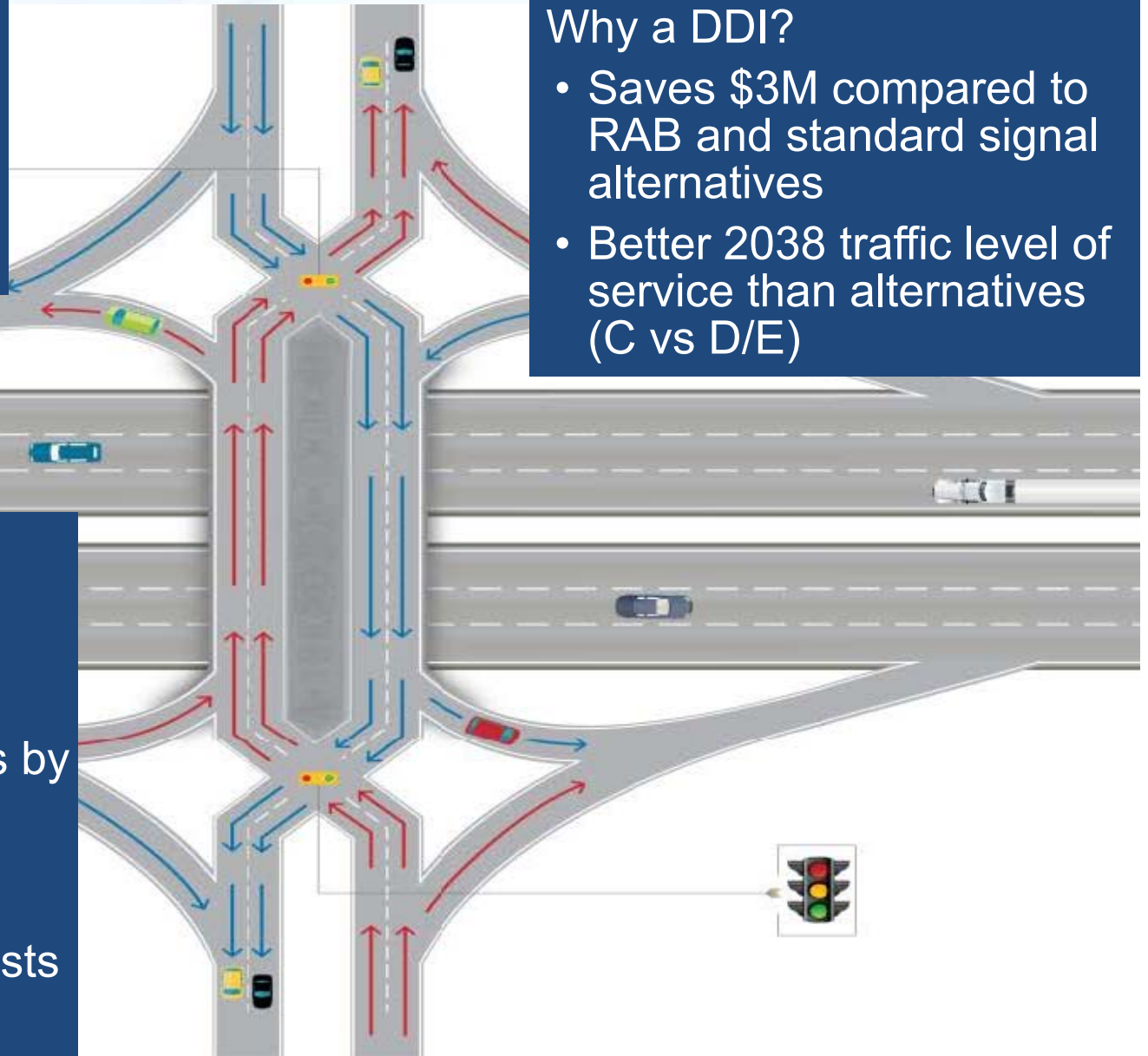
- Easy navigation, guides drivers with:
- Overhead signs
- Pavement markings
- Traffic signals

## Why a DDI?

- Saves \$3M compared to RAB and standard signal alternatives
- Better 2038 traffic level of service than alternatives (C vs D/E)

## Improved safety and capacity

- Free-flow right and left turns onto freeway
- Reduces conflict points by nearly half (14 vs 26)
- Meets all user needs including large trucks, pedestrians and bicyclists



# Work Zone Safety

- Recognizing work zones
  - Flashing lights
  - Orange signs
  - Barrels and flags
- Driving
  - Slow down
  - Follow the law
  - Plan ahead
  - Put your cell phone away
  - Expect the unexpected
- Consequences

- Freeway Service Team
- Intelligent Transportation Systems (ITS)
- Emergency responder meetings





# Construction Communication

- Traffic impacts
  - Nighttime lane closures
  - Ramp closures
- Changeable message boards
- News / media alerts
- Website



# Project Website

## WIS 441 Tri-County Project

Tri-County Expansion

[www.projects.511wi.gov/wis441/](http://www.projects.511wi.gov/wis441/)

- OVERVIEW
- SCHEDULE
- MAP
- CLOSURES
- NEWS RELEASES
- PHOTOS
- RESOURCES ▸
- CONTACT

### Overview

Welcome to the WIS 441 Tri-County Project construction website! The WIS 441 Project will reconstruct and expand approximately 6 miles of US 10 / WIS 441 from 4 lanes to 6 lanes between Cold Spring Road (County B) and Oneida Street (US 10) in Winnebago County and reconstruct five interchanges and the Roland Kampo Bridge.

Need daily road closures for the WIS 441 Project?

Follow us on social media!

[facebook](#)

[twitter](#)

FULL OVERVIEW



- Keeping public informed
  - Project web presence
  - Media outreach
  - Newsletters
  - Public meetings
  - Social media
- Feedback



# Project Office



- Field office
  - Permanent presence
  - Public / business involvement



A landscape photograph showing a multi-span concrete bridge crossing a wide river. The sky is filled with dramatic, dark clouds, with a bright sunset or sunrise glow on the right side. The foreground is a grassy field. The word "Questions?" is overlaid in large white text in the lower center.

**Questions?**