

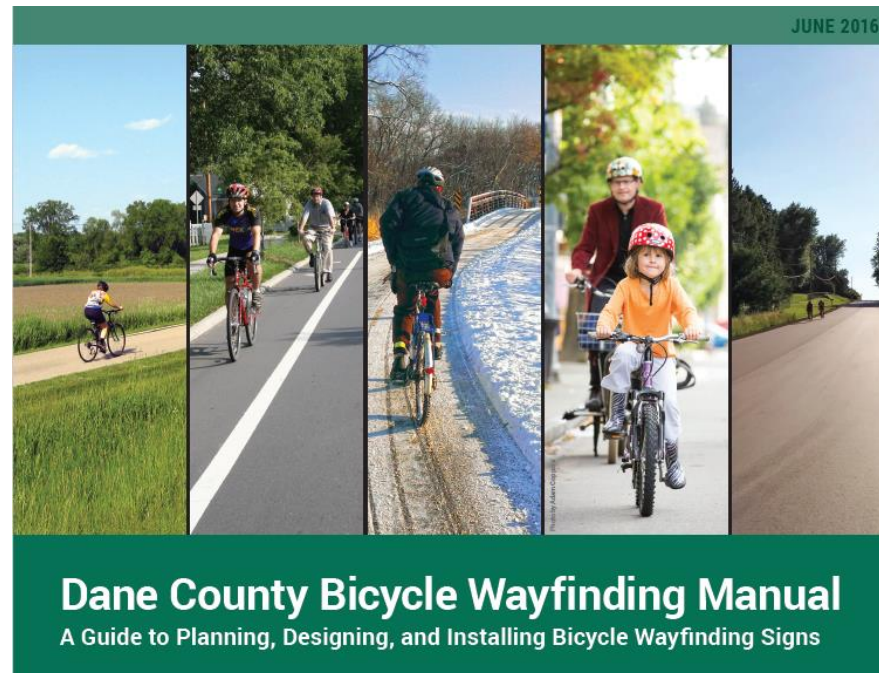
Dane County Bicycle Wayfinding

August 25, 2016




Project Scope

- Bicycle Wayfinding Manual
- Sample Wayfinding Plans



Why Wayfinding?

- For Riders
 - Higher level of comfort for riders, especially new riders
 - Guidance on less intuitive routes
 - Provide navigational assistance and helps in finding destinations
 - For Municipalities
 - Consistency across jurisdictional boundaries
 - Simplify implementation
 - Support bicycle encouragement
- 

For Whom are We Signing?

- Residents

- new to bicycling
- new to the neighborhood or city
- confidence in a complicated route
- trying a new facility

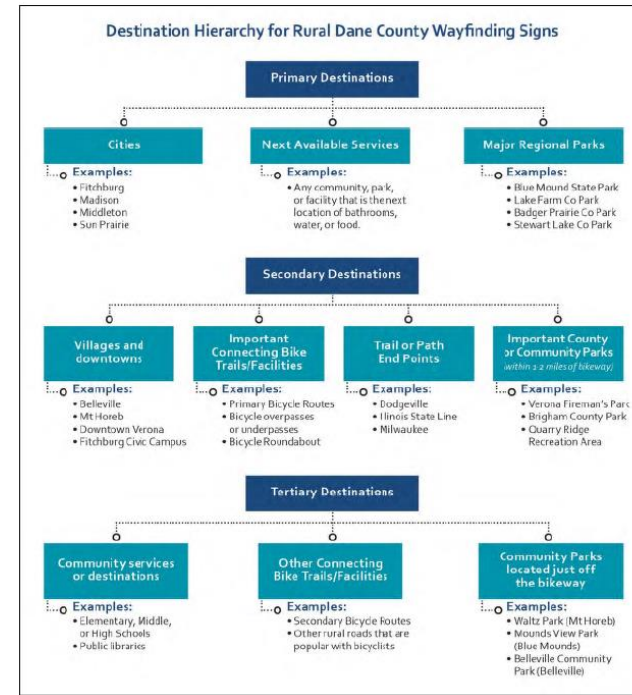
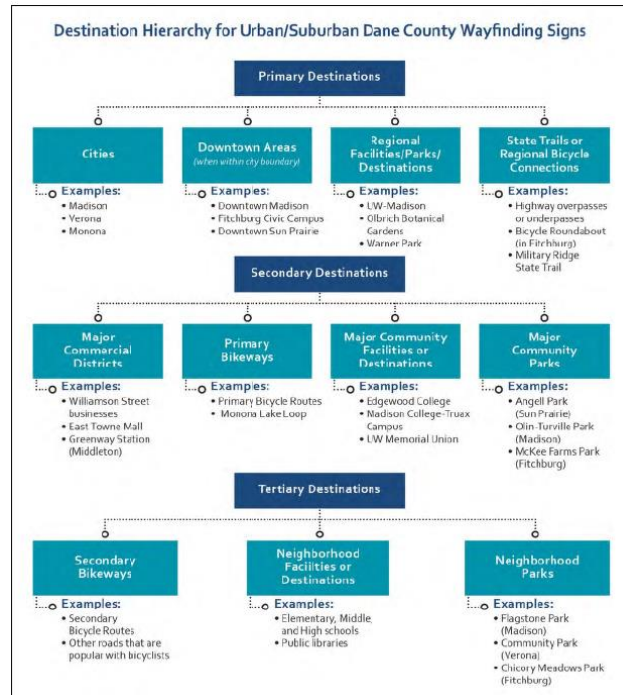
- Tourists

- Skill level

- Interested but concerned
- Experienced but in unfamiliar area

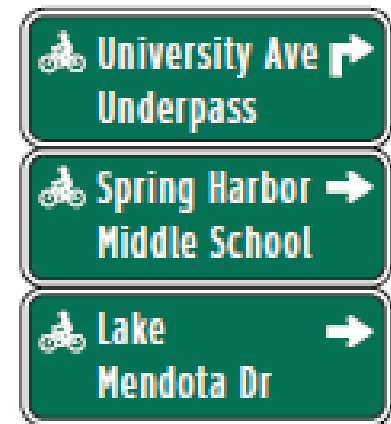


Developing Destination Signage



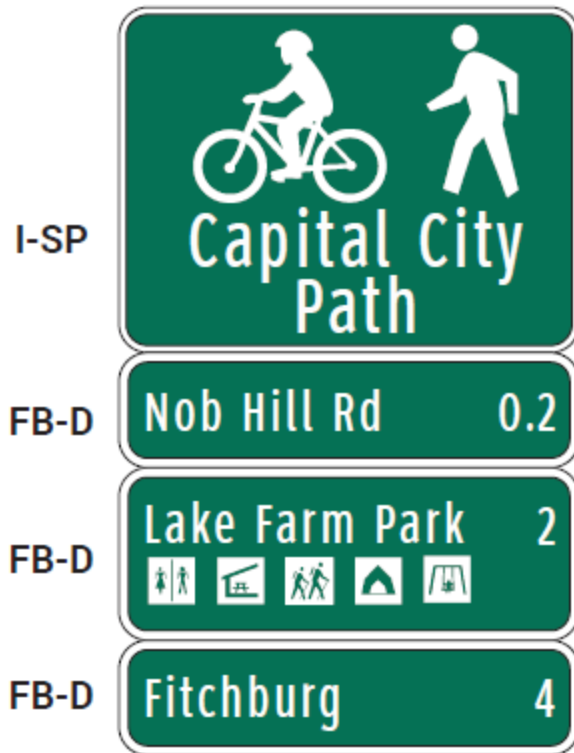
Context	Primary Destinations	Secondary Destinations	Tertiary Destinations
Urban/Suburban Bikeway	Up to 5 miles	Up to 2 miles	Up to 1 mile
Rural Bikeway	No distance limit	Up to 5 miles, with the exception of trail or path end points, which have no distance limit	Up to 1 mile

Decision Assemblies

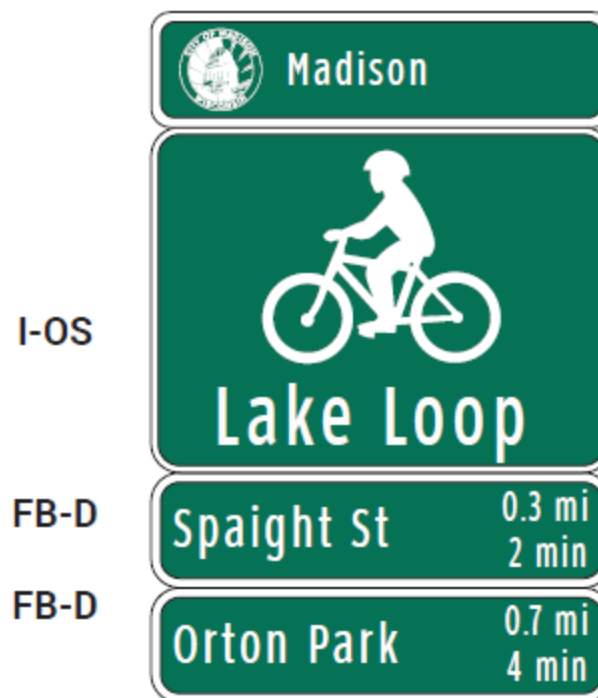


Confirmation Assemblies

Typical confirmation assembly for a shared use path



Confirmation assembly showing both distance and time.



Street Name Assemblies

Typical double-sided street
name assembly with Stop Sign



Double-sided street
name assembly with multiple path names



Path Access and Exit Assemblies



Signage Plan



Signage Plan



Location

On Cannonball Path
At South of spur to Arboretum

Installation Details


Assembly Type Decision
Jurisdiction City of Madison
Post New 12 Foot Post
Other Assemblies Back to Back with #306,
Perpendicular to #308
Sign Facing West
Post Distance off Pavement 4 ft south of path
Distance from Intersection 0 ft

Placement Notes

Place on south side of intersection with trail spur

Kiosks and Maps

Ice Age Junction and Military Ridge State Trail



Trail Rules & Etiquette

- Slowest traffic has the right-of-way
- Give audible warning before passing
- Keep right except when passing
- Move off the trail before stopping
- Pets must be leashed and under control at all times
- Keep the trail clean-- properly dispose of trash or take it with you

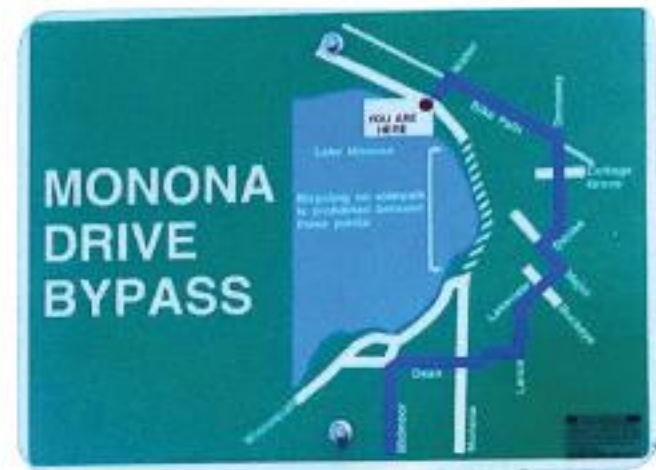
Fees

State Trail Pass:

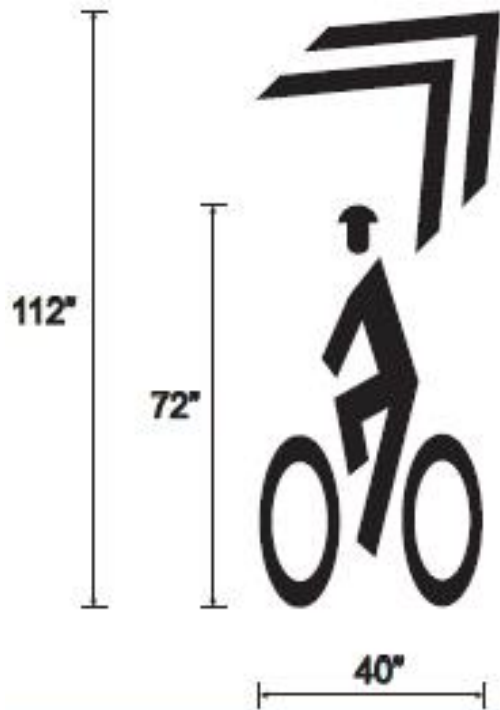
- Daily - \$5
- Annual - \$25

Insert payment in the self-pay envelope and deposit in the slot on the side of kiosk.

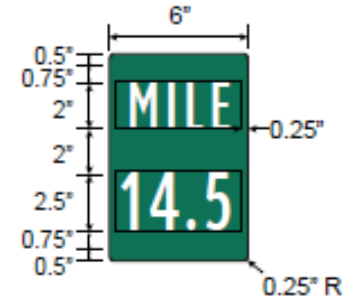
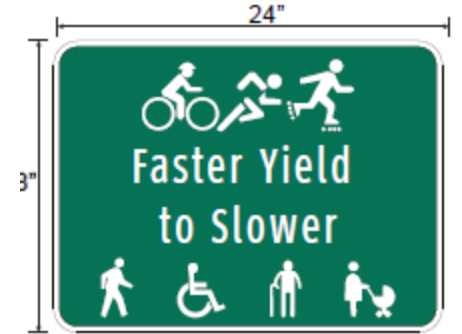
For Emergency: Call 911 **For Maintenance: Call (XXX) XXX-XXXX**



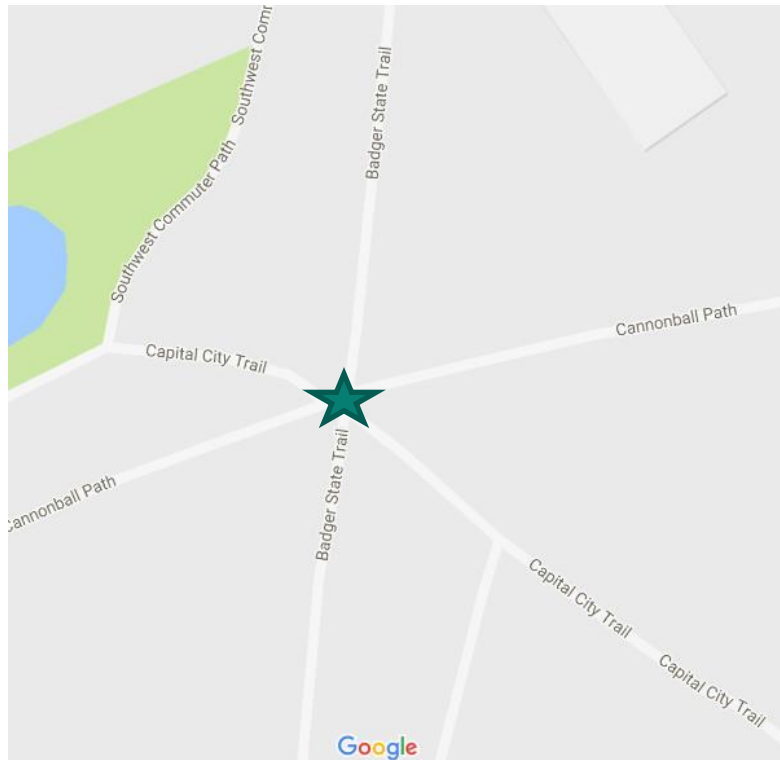
Pavement Markings



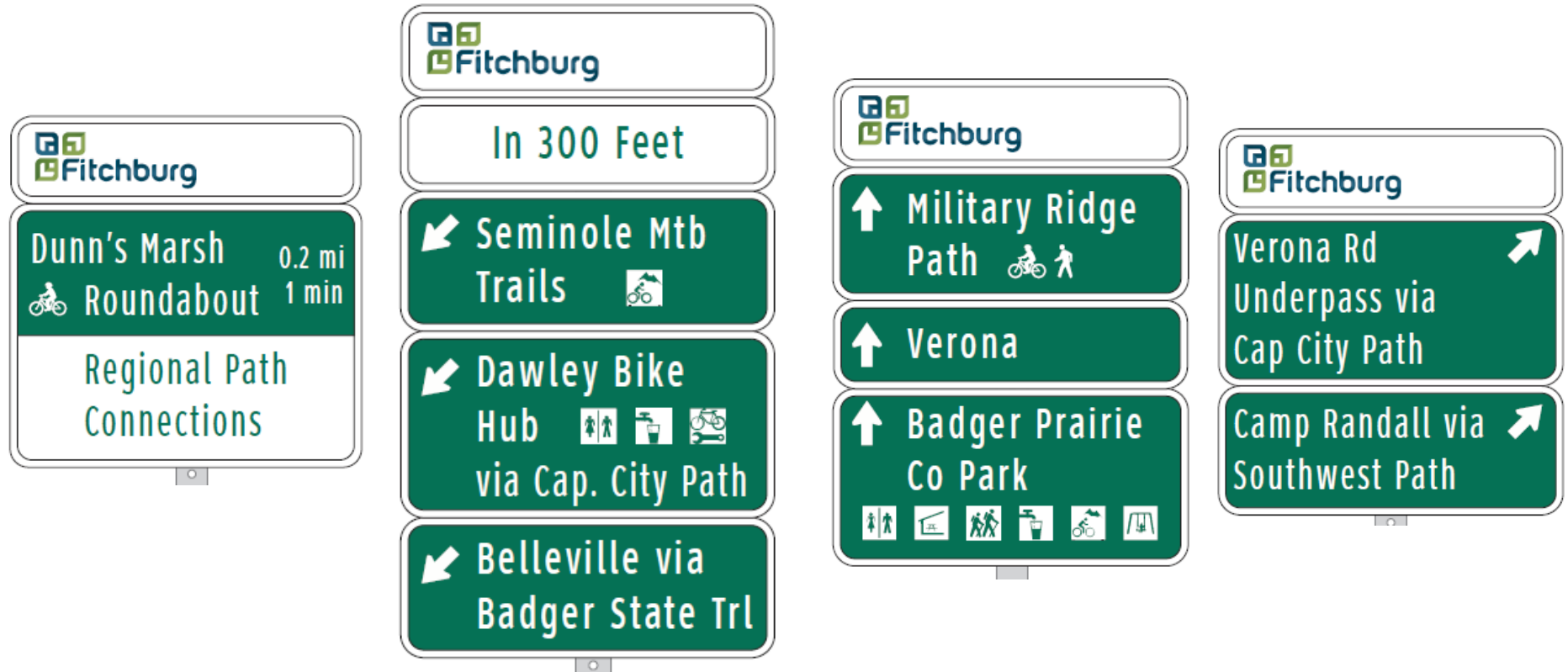
Other Signs




Bicycle Roundabout



Bicycle Roundabout



Wayfinding Manual

- Sign Layout
 - Capitalization, Abbreviations
 - Consistent Naming of Paths and Bikeways
 - Sign Mounting and Post Standards
 - Sign Fabrication Standards
 - Creating a Sign Installation Plan
 - Detour Signage
- 

Wayfinding

Contact:

Renee Callaway

recallaway@cityofmadison.com