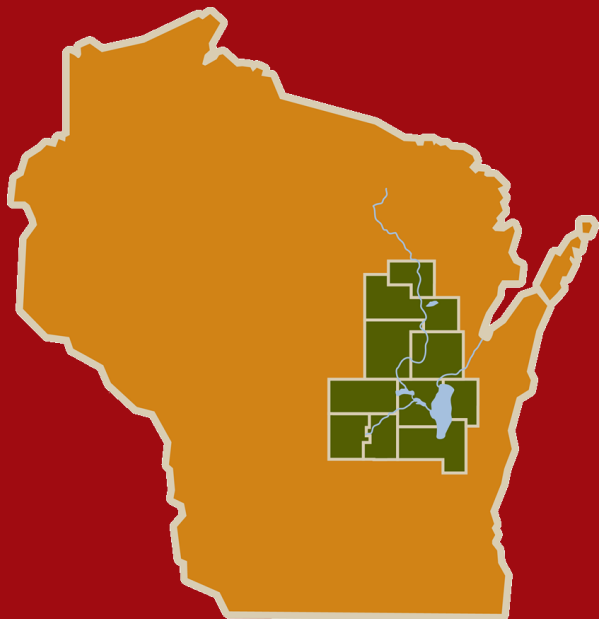


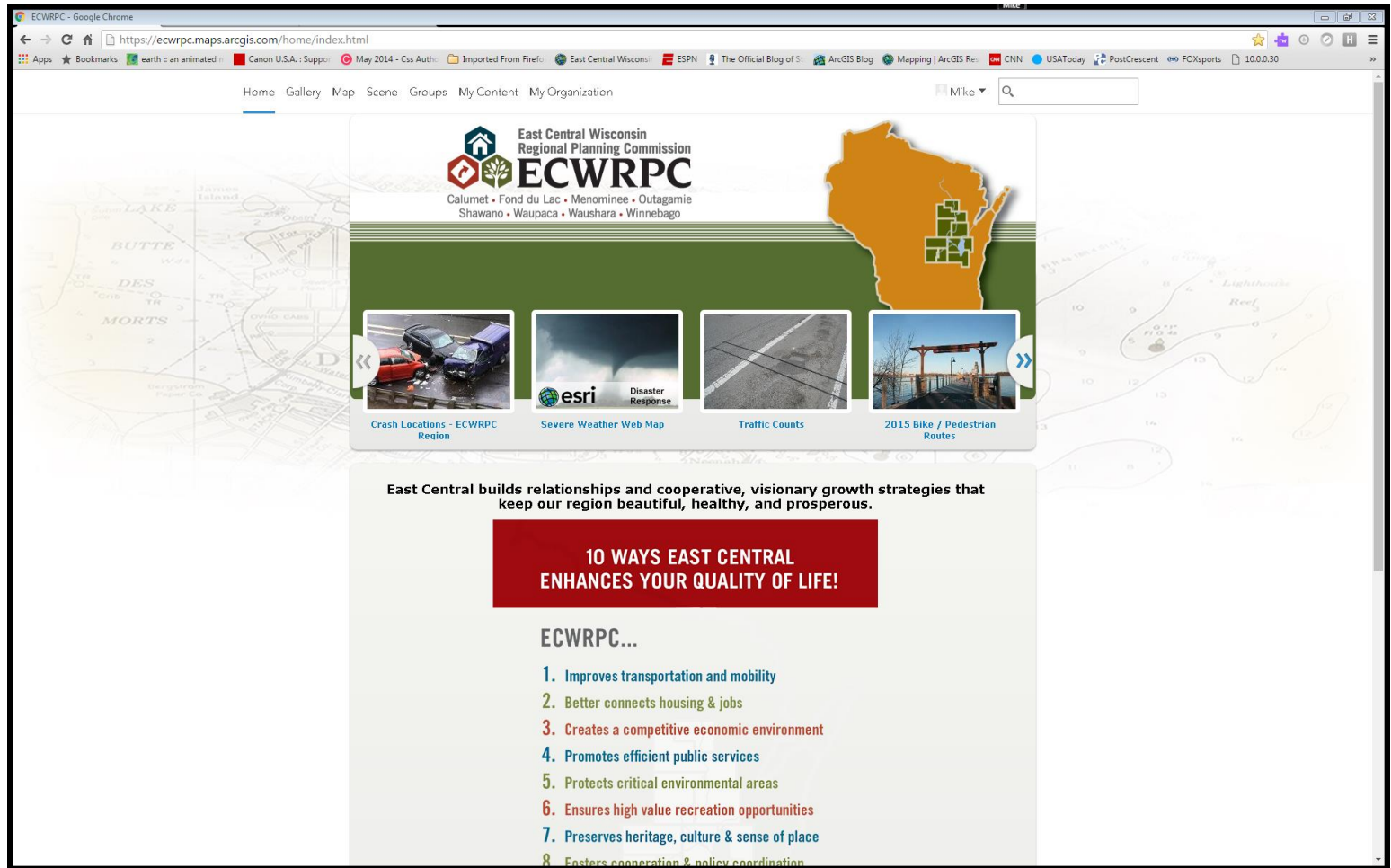
Crash Location Web App



- The Traffic Operations and Safety (TOPS) Laboratory at the University of Wisconsin-Madison provides crash summary reports as a service to the Wisconsin Department of transportation (WisDOT) Bureau of Traffic Operations (BTO). The crash database, provided by WisDOT, Division of Motor Vehicles, Citations and Withdrawals Section, contains information on all police reported crashes in Wisconsin from 1994 to the current year. Information on the location of the crash, vehicles involved, and general crash attributes are available. Personal data have been removed.
- A reportable crash is defined as a crash resulting in injury or death of any person, any damage to government-owned non-vehicle property to an apparent extent of \$200 or more or total damage to property owned by any one person to an apparent extent of \$1000 or more. (This definition went into effect 1/1/96). It is important to note, however, that not all reportable crashes are reported. In order for a crash to be in the database, an MV4000 crash report must have been completed by a police officer.

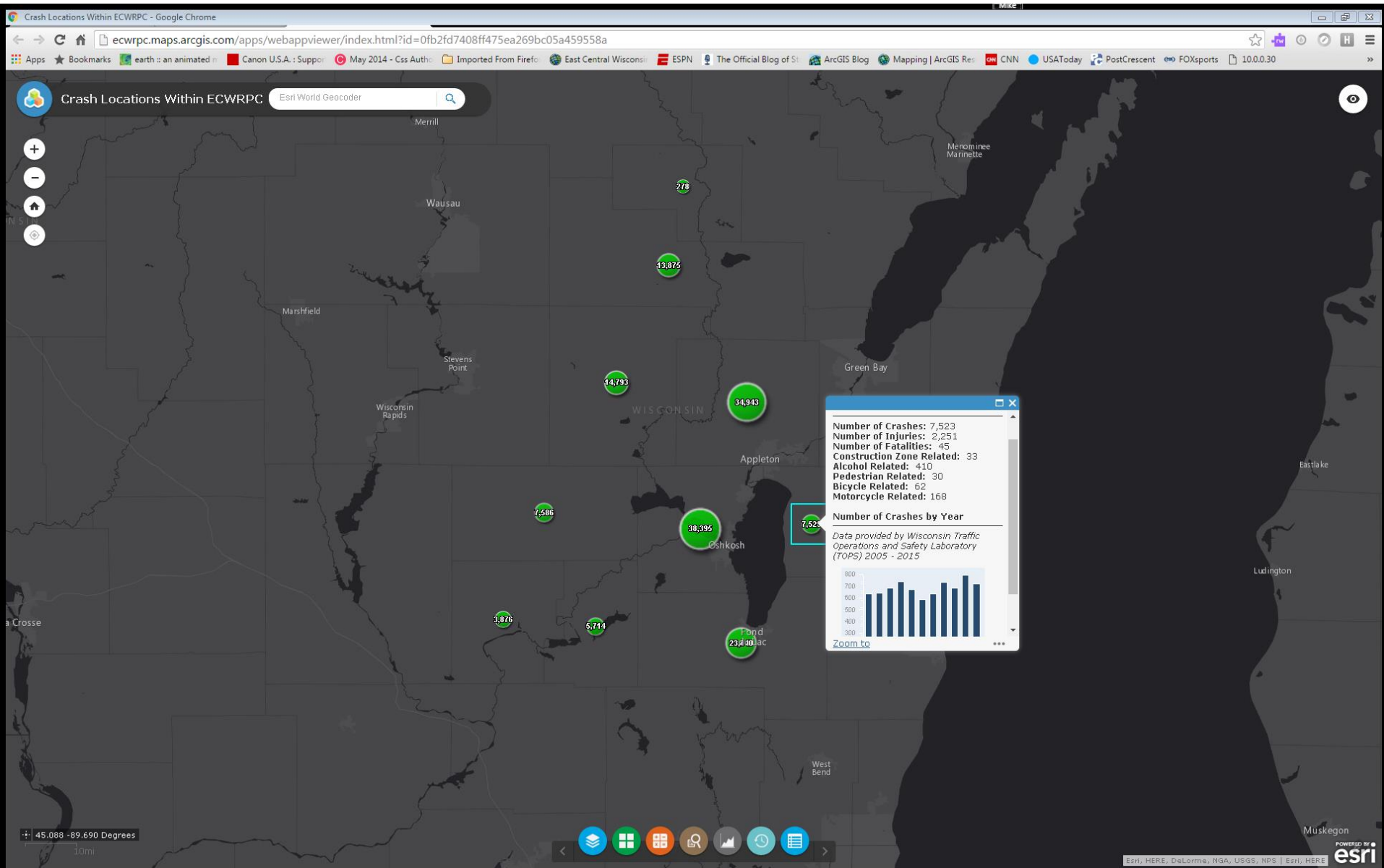


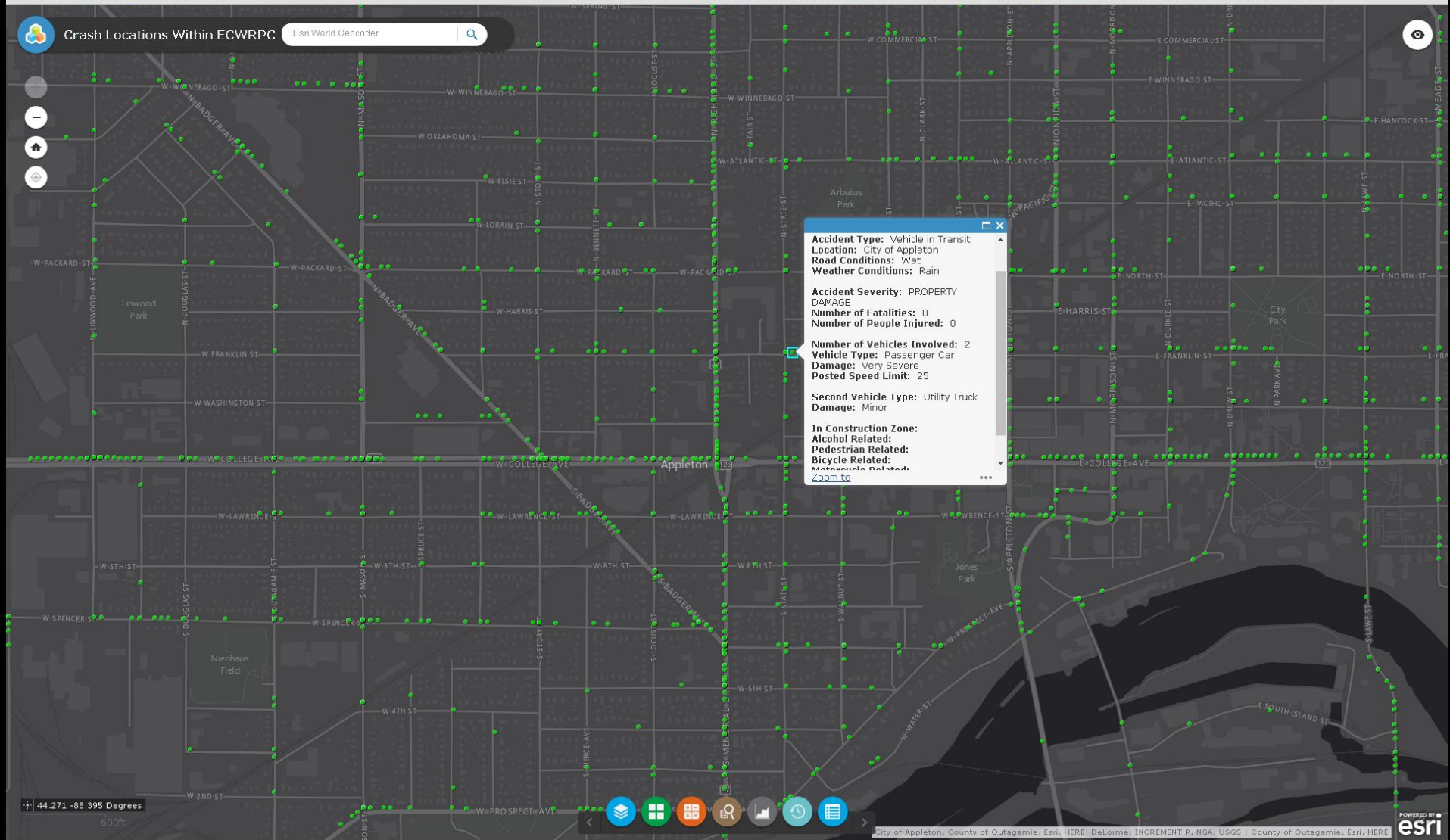
Crash Location Web App



ecwrpc.maps.arcgis.com







Esri World Geocoder



Accidents

2,733

Injuries

1,123

Fatalities

4

Construction

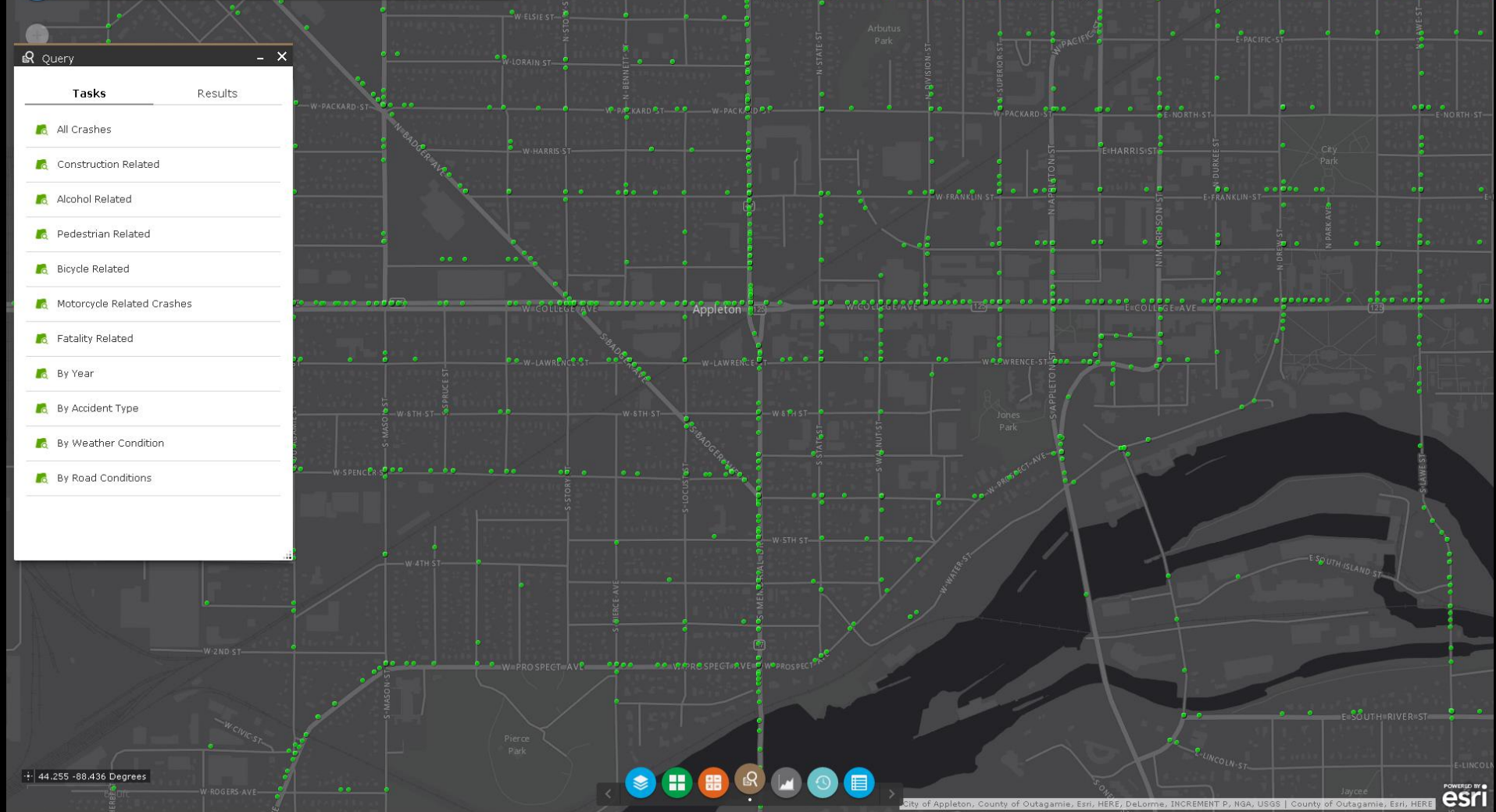
38

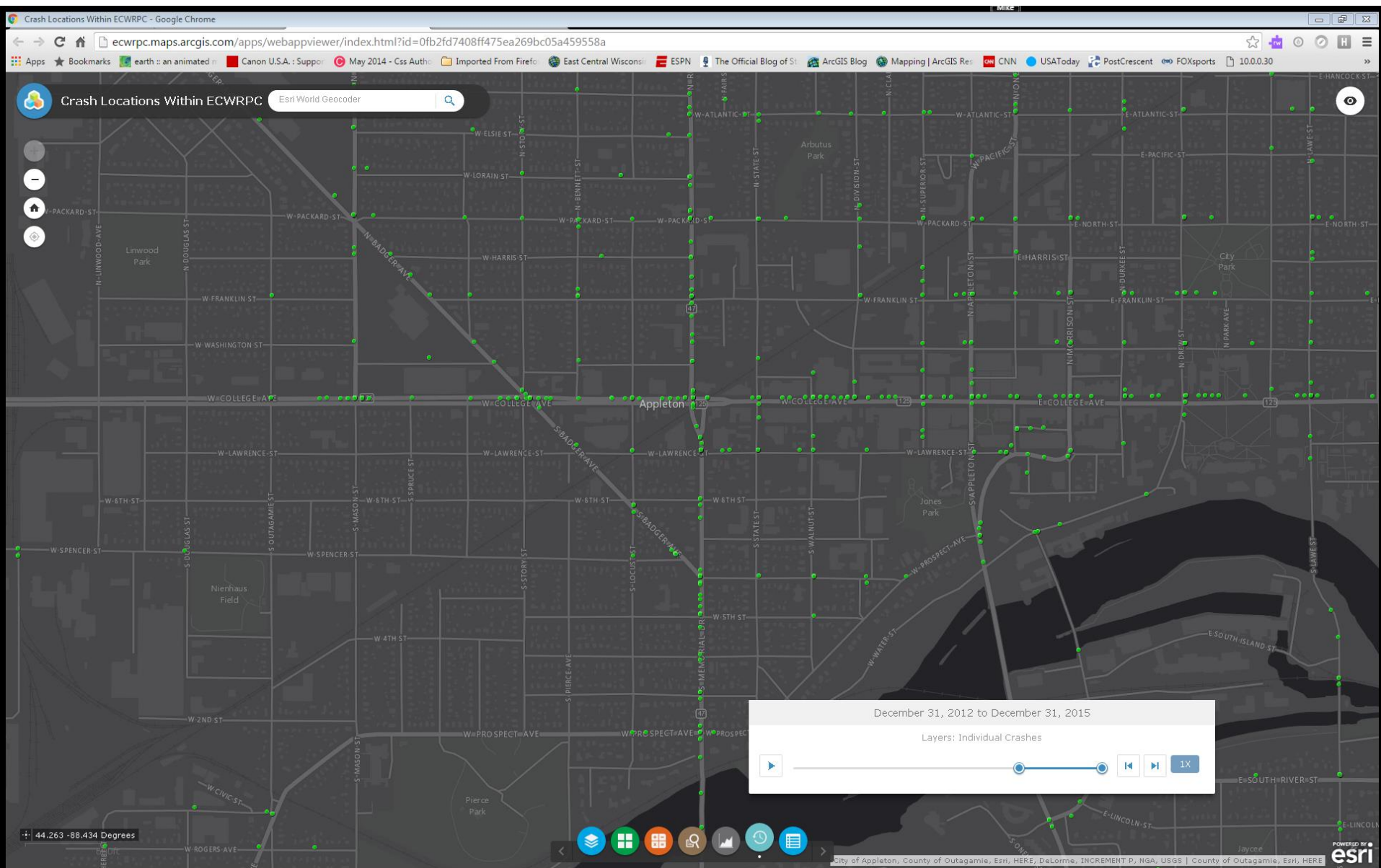
Summary

44.264 -88.435 Degrees



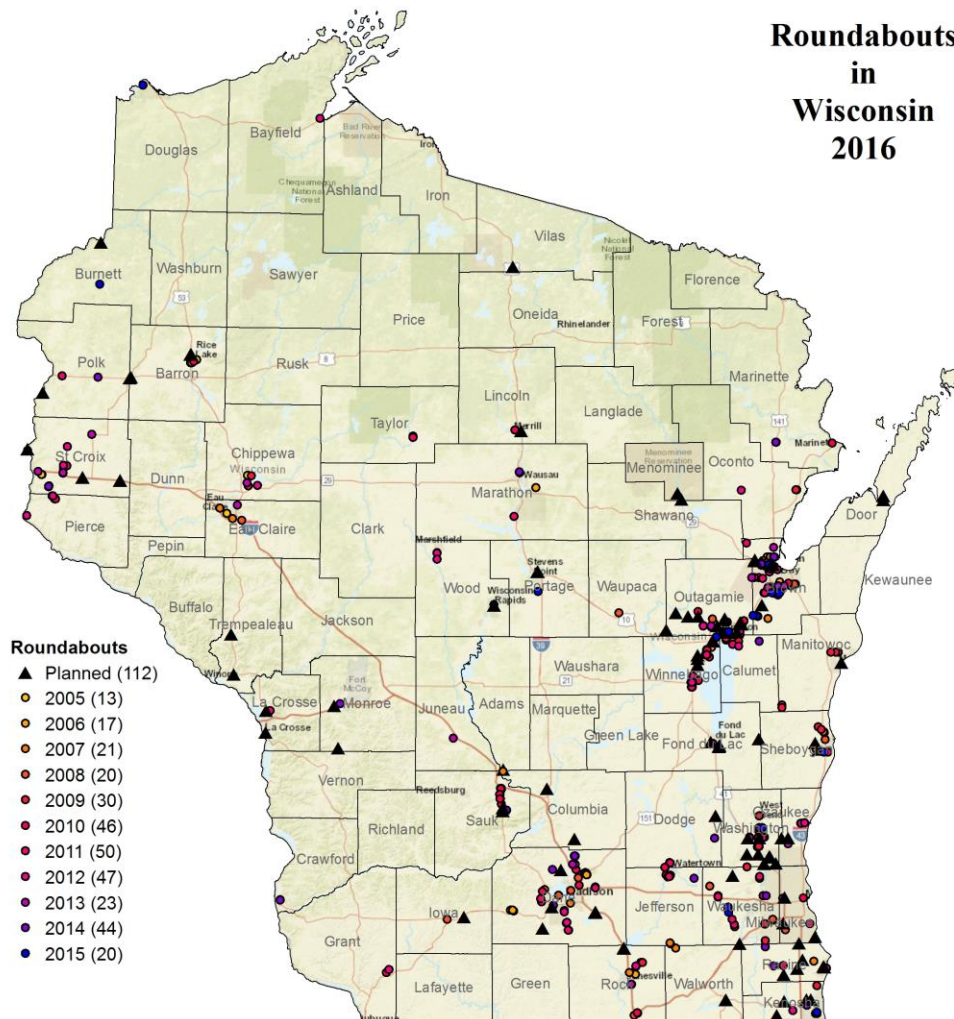
The screenshot displays a web-based GIS application interface. The main map area shows a street grid in Applegate, Oregon, with a blue shaded region representing a watershed. Green dots are scattered across the map, indicating sampling locations. A legend in the top right corner identifies the blue area as 'Watershed' and the green dots as 'Sampling Locations'. The bottom of the screen features a toolbar with various GIS tools (e.g., pan, zoom, measure) and a status bar showing coordinates (44.266 -88.428 Degrees) and a scale bar (600ft). The map is powered by Esri, as indicated by the logo in the bottom right corner.







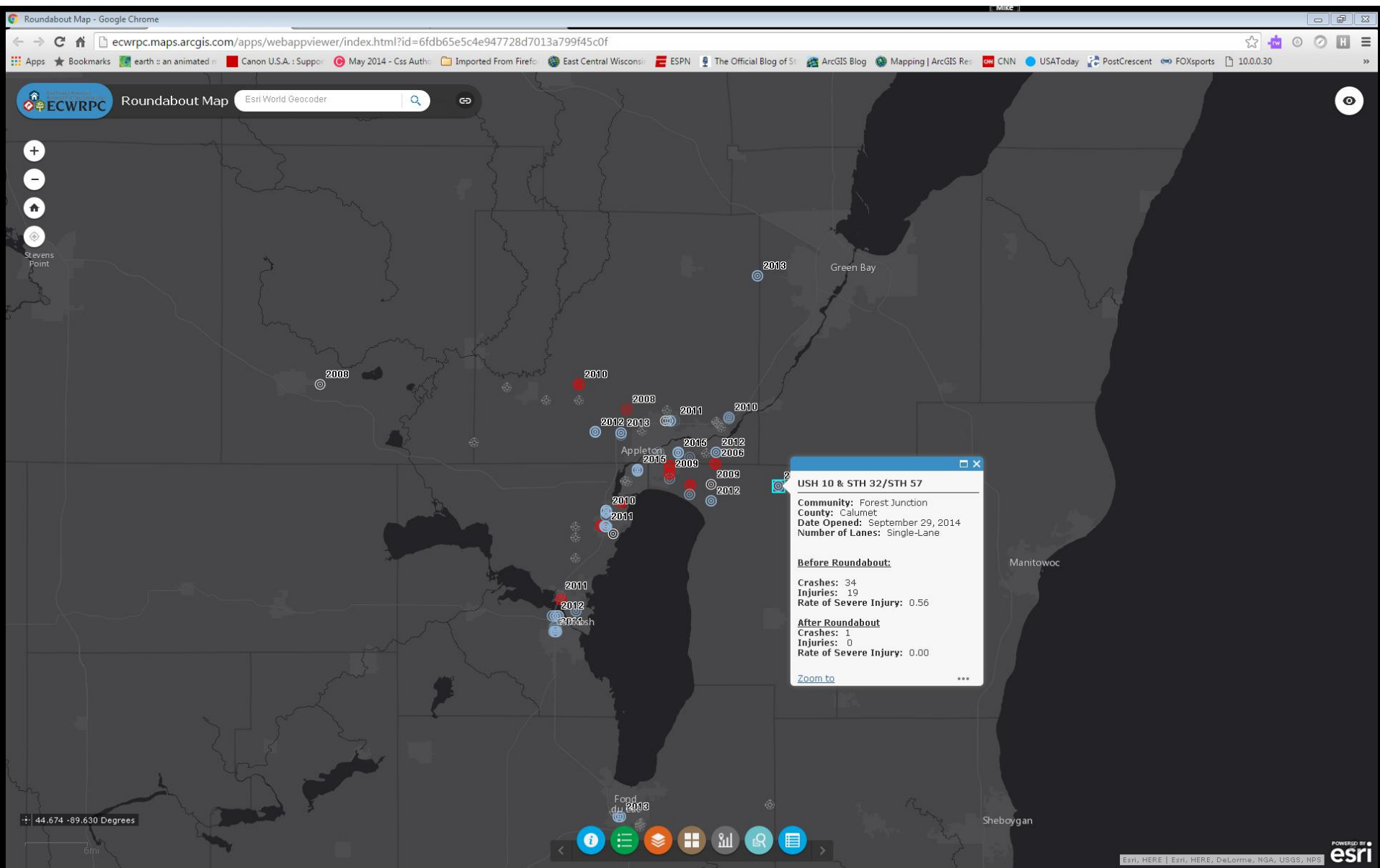
Roundabouts in Wisconsin 2016

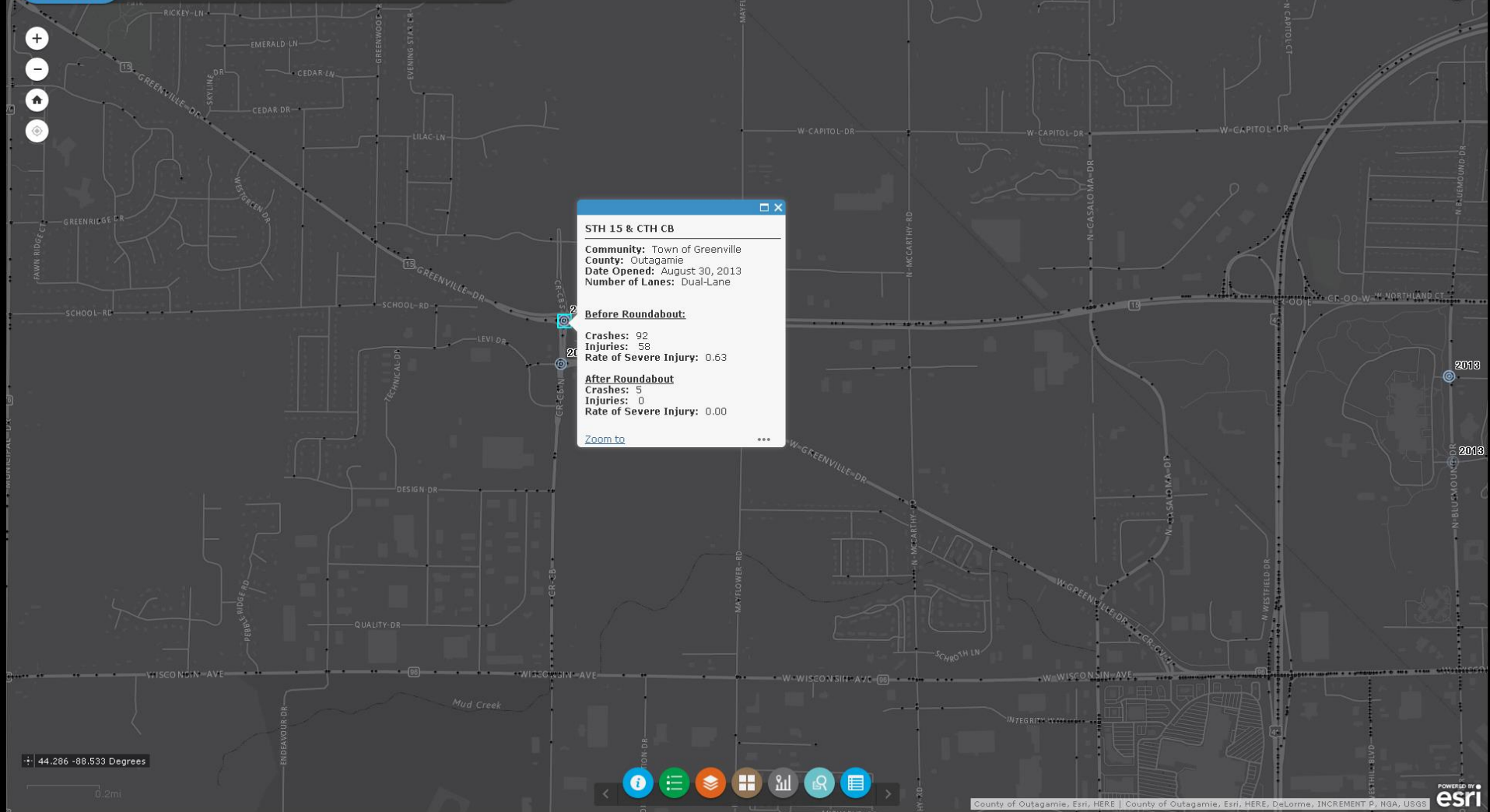


- Roundabouts**
- ▲ Planned (112)
 - 2005 (13)
 - 2006 (17)
 - 2007 (21)
 - 2008 (20)
 - 2009 (30)
 - 2010 (46)
 - 2011 (50)
 - 2012 (47)
 - 2013 (23)
 - 2014 (44)
 - 2015 (20)

Roundabouts by County

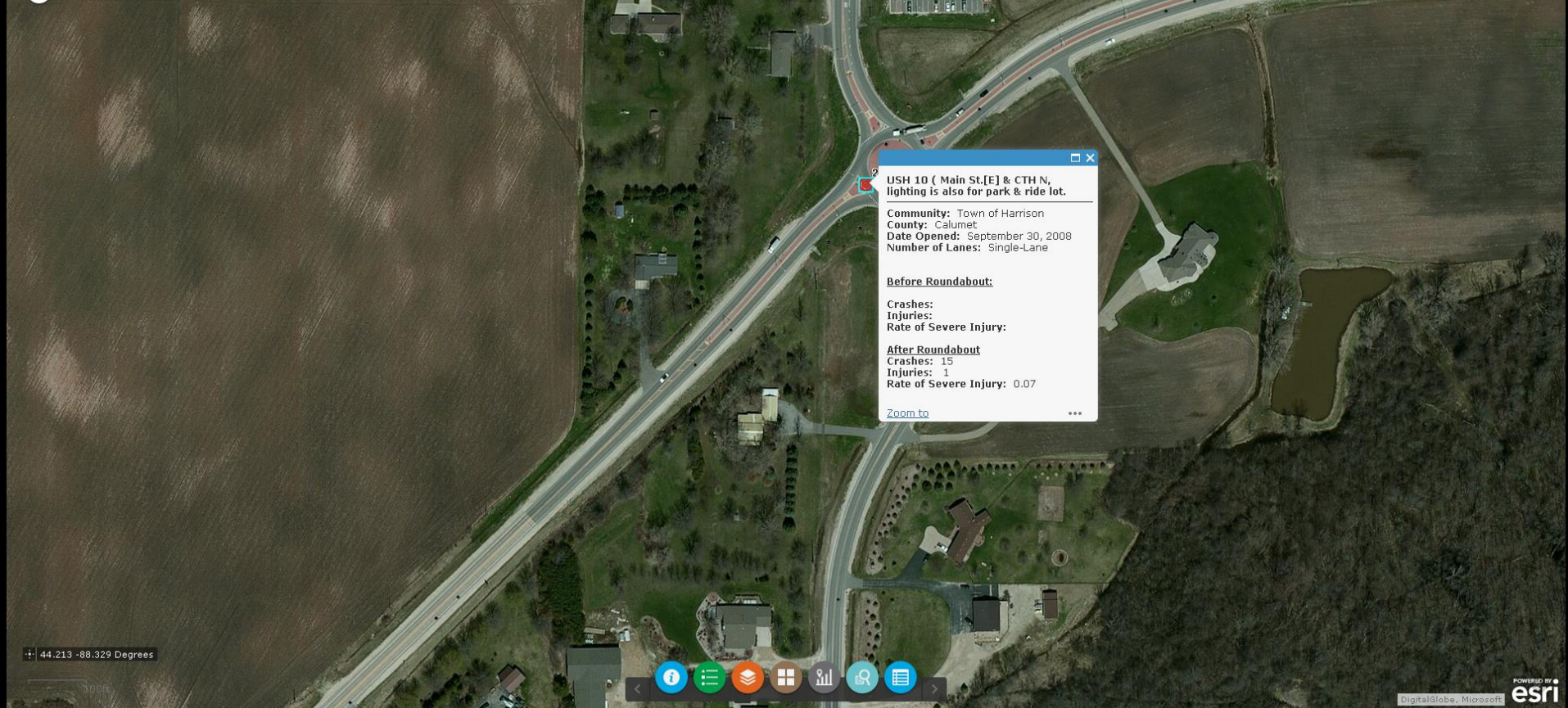
Brown	77	Barron	10	Door	4	Grant	2	Shawano	1
Dane	46	Kenosha	10	La Crosse	4	Iowa	2	Vilas	1
Winnebago	32	Milwaukee	10	Marathon	4	Lincoln	2		
Outagamie	30	Calumet	9	Portage	4	Taylor	2		
Washington	25	Fond du Lac	8	Columbia	3	Trempealeau	2		
Waukesha	24	Ozaukee	7	Crawford	3	Washburn	2		
Saint Croix	20	Wood	7	Marinette	3	Waupaca	2		
Rock	16	Manitowoc	6	Monroe	3	Adams	1		
Sauk	15	Chippewa	5	Oconto	3	Bayfield	1		
Jefferson	11	Eau Claire	5	Polk	3	Douglas	1		
Racine	11	Pierce	5	Walworth	3	Juneau	1		
Sheboygan	11	Dodge	4	Burnett	2	Menominee	1		





+ 44.286 -88.533 Degrees

0.2mi



USH 10 (Main St[E] & CTH N,
lighting is also for park & ride lot.

Community: Town of Harrison
County: Calumet
Date Opened: September 30, 2008
Number of Lanes: Single-Lane

Before Roundabout:

Crashes:
Injuries:
Rate of Severe Injury:

After Roundabout

Crashes: 15
Injuries: 1
Rate of Severe Injury: 0.07

[Zoom to](#) ...

Filter Crashes

Tasks Results

Filter by Date Before Roundabout

9/30/2008

ACCDDATE < '2008-09-30 00:00:00'

Spatial filter

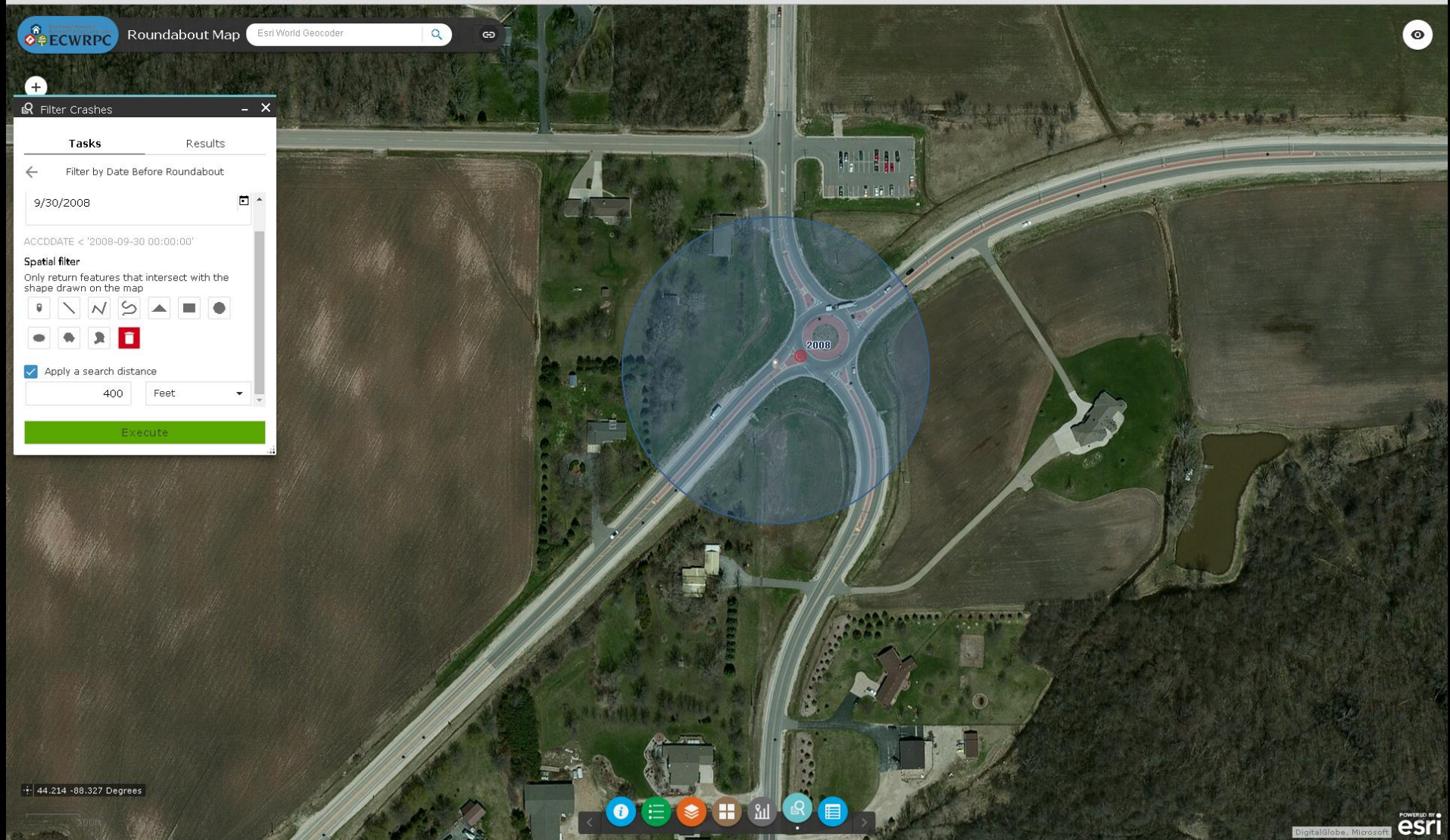
Only return features that intersect with the shape drawn on the map

☐ ☐ ☐ ☐ ☐ ☐ ☐ ☐ ☐ ☐ ☐ ☒

☒ Apply a search distance

400 Feet

Execute



Filter Crashes

Tasks

Results

Filter by Date Before Roundabout _Qui

Number of features found: 4

February 3, 2005

Accident Type Vehicle in Transit

Road Condition Unknown

Weather Condition Clear

Accident Type FATAL ACCIDENT

Total Fatalities 1

Total Injuries 4

Location Village of Harrison

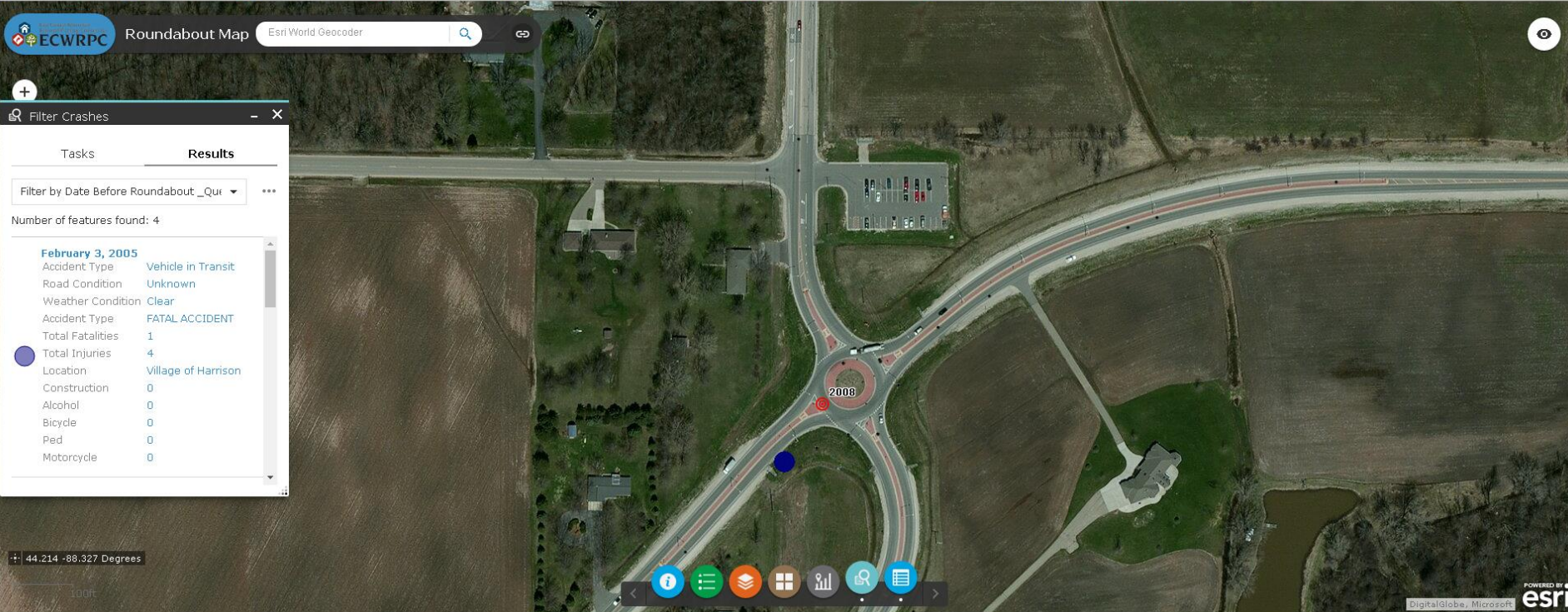
Construction 0

Alcohol 0

Bicycle 0

Ped 0

Motorcycle 0



OBJECTID	ACCDATE	ACCDTYPE	ROADCOND	WTHRCOND	ACCDSVR	TOTFATL	TOTINI	Mod_Name	Construct	Alcohol	Bicycle	Ped	Motorcycle
1385	February 3, 2005	Vehicle in Transit	Unknown	Clear	FATAL ACCIDENT	1	4	Village of Harrison	0	0	0	0	0
3977	April 17, 2005	Vehicle in Transit	Unknown	Clear	FATAL ACCIDENT	1	1	Village of Harrison	0	0	0	0	0
7801	August 12, 2005	Vehicle in Transit	Unknown	Cloudy	INJURY OCCURRED	0	2	Village of Harrison	0	0	0	0	0
15855	February 17, 2006	Vehicle in Transit	Snow	Cloudy	INJURY OCCURRED	0	1	Village of Harrison	0	0	0	0	0

Related Table Charts

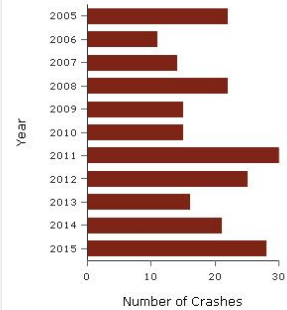
Esri World Geocoder

Search an address or locate on map

Esri World Geocoder

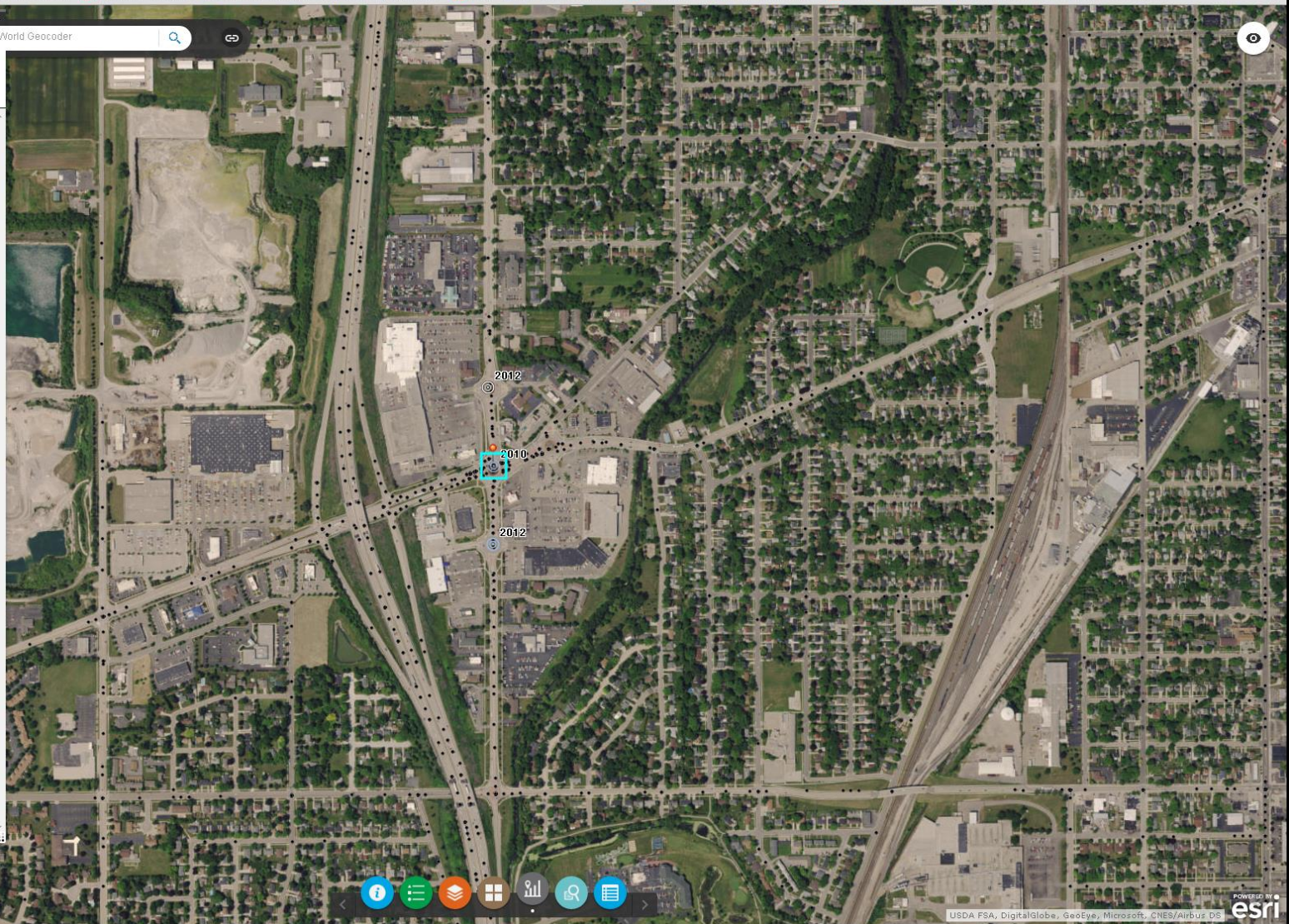
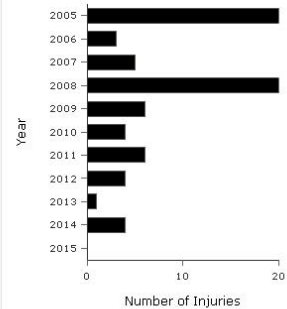
Crashes by Year

Crashes by Year



Injuries by Year

Injuries by Year



44.129 -88.498 Degrees





Michael Zuege – GIS Coordinator ECWRPC
mzuege@ecwrpc.org

