

Fox cities urbanized area

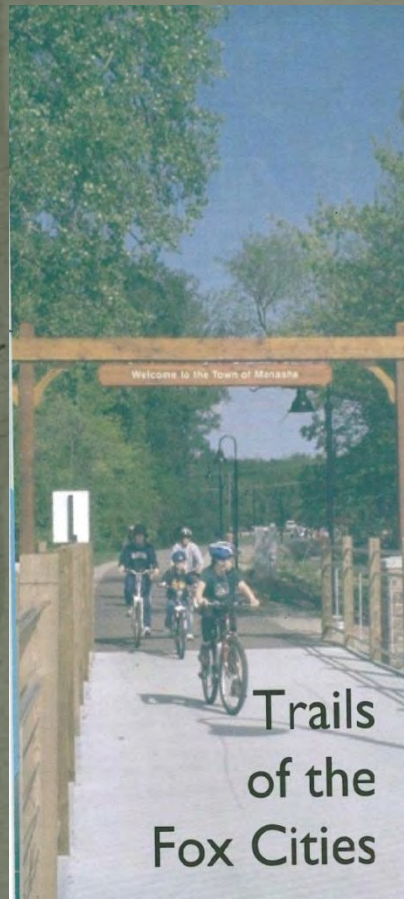
FOX CITIES

Past Efforts of Data Gathering

- 2005 - GIS data was received from the local municipalities, trails groups, and non-profits such as the Fox Cities Greenways.



- 2006 - EC Staff was part of a taskforce planning team of park and rec professionals to produce a Fox Cities Trails Brochure –A comprehensive look at existing facilities / current trails – A snap shot in time.



- 2007 – Data became available as new trails were being built and developed. 2007 geared an update of the brochure only 1-year later.



Visitor and tourism area designations

- * The last brochure update was completed in 2010 and utilizes the Fox Cities Chamber of Commerce Visitor area designations. East Central used these designations to map the current and planned trails for the MPO area:

APPLETON*



Appleton

FOX-WEST



Grand Chute,
Greenville

HEART OF THE VALLEY*



Little Chute,
Combined Locks,
Kimberly, Darboy,
Kaukauna

WATERFRONT



Neenah-Menasha

**The Town of Harrison is split between Appleton and HOV*

2012 Current Data gathering for the Plan –

- * Contacted all municipalities in the Urbanized area and asked them for trails and sidewalk data where available.
- * Data from Park & Rec Plans were also taken into account as well as completed Bike and Ped Plans and the Safe Routes to School program.
- * The data took awhile to receive and we are still waiting on a few requests. Process begun in early 2012.
- * Issue discovered - each municipality in the UAB/MPO has it's own coding scheme. (Not surprising)
- * Legend - many trail categories existed which provided a challenge in mapping. (off-road, on-street)

A Data Checklist was developed – Still in Progress

Fox Cities Metropolitan Planning Area (MPA)	Existing bike/ped plan?	Comp plan address bike/ped?	Off-street bike/ped facilities data?	On-street bike/ped facilities data?	Sidewalk data?
City of Appleton	Yes		Yes	Yes	Yes
City of Kaukauna	No	Yes	Yes	Yes	Contacted
City of Menasha	No		Yes	Yes	Yes
City of Neenah	Yes, 1997		Yes	Yes	Yes
Village of Combined Locks	No	Yes	Yes	Yes	None
Village of Kimberly	No	Yes	Yes	Yes	Contacted
Village of Little Chute	Yes	Yes	Yes	Yes	Some
Village of Wrightstown	No		No	No	
Town of Buchanan	No	Yes	Incomplete	Incomplete	Only on KK
Town of Center	No	Yes	No	Incomplete	None
Town of Clayton	No		No	Yes	None
Town of Ellington	No	Yes	Incomplete	Incomplete	None
Town of Freedom	No	Yes	Incomplete	Incomplete	None
Town of Grand Chute	In Progress	Yes	Yes	Yes	Yes
Town of Greenville	No		Yes	Yes	None
Town of Harrison	No		Yes	Yes	Contacted
Town of Kaukauna	No		Yes	Yes	None
Town of Menasha	In progress		Yes	Yes	None
Town of Neenah	No		Yes	Yes	None
Town of Vandenbroek	No		Yes	Yes	None
Town of Vinland	No		Yes	Incomplete	None
Town of Woodville	No		Incomplete	No	None
Oshkosh Metropolitan Planning Area (MPA)	Existing bike/ped plan?	Comp plan address bike/ped?	Off-street bike/ped facilities data?	On-street bike/ped facilities data?	Sidewalk data?
City of Oshkosh	Yes		Yes	Yes	Yes
Town of Algoma	No		Yes	Inc in City Bike / Ped Plan	None
Town of Black Wolf	No		Yes	Inc in City Bike / Ped Plan	None
Town of Nekimi	No		Yes	Inc in City Bike / Ped Plan	None
Town of Omro	No		No	No	None
Town of Oshkosh	NO		Yes	Inc in City Bike / Ped Plan	None

Key discrepancies from the data gathered:

- * All Municipalities had their own trail categories.
- * Existing regional data gathered from the WDNR and other state sources didn't match.
- * Proposed vs. Planned trails added to the Existing trails caused confusion.
- * Overlapping of trails, i.e. Paper Trail.
- * Type and Names of trails not always present in data.

EXAMPLES OF DIFFERENT DATA FIELDS

Town of Harrison

Type, Status, Name, Surface and Length

Id	Type	Status	Name	Surface	Length
0	Trail	Existing	Highline	Off-Street Unpaved	3765
0	Pond Access Trail	Existing		Off-Street Unpaved	1799
0	Trail	Existing	Highline	Off-Street Unpaved	84
0	Trail	Existing	Noe	Off-Street Paved	2258
0	Trail	Existing	Noe	Off-Street Paved	2742
0	Sidewalk	Existing		Off-Street Paved	340
0	Bike Lane	Existing		On-Street	330
0	Bike Lane	Existing		On-Street	330
0	Trail	Proposed			0

Type, Status, Name, Surface and Length

[illegible]

The screenshot shows the ArcCatalog application window. The top menu bar includes File, Edit, View, Go, Geoprocessing, Customize, Windows, and Help. Below the menu is a toolbar with icons for file operations and viewing. The Location bar at the top indicates the current path: O:\NewData\Cneenah\trail_existing.shp.

The Catalog Tree on the left displays a hierarchical view of the data. The 'O:\NewData' folder is expanded, showing subfolders like 'ATC' and 'Cneenah'. The 'Cneenah' folder is further expanded, revealing a list of files and subfolders, including 'polycone', 'sidewalk_existing', 'trail_existing', 'GridWaterData', 'MenomineeTribe', 'OutagamieCity', 'ShawanoCity', 'Tharrison', 'WaupacaCity', 'WGNH_S_Data', 'WinnebagoCity', 'WMMParkCorps', 'O\Trish', 'PA', 'P\1413_RegionalPark_2012', 'P\1418_C Clintonville_OpenSpacePlan2012', 'P\1421_Winnebagocity_OpenSpacePlan2012', 'P\1422_T_Buchanan_OpenSpacePlan2012', 'P\HealthTables_Data', 'RS', 'SA', and 'GAMMA\RedirectedFolders\Trish\My Documents'.

The Contents pane on the right shows a table with two columns: 'FID' and 'Shape'. The table lists various polygon features, each with a unique FID and a 'Polyline' shape. A green circle highlights the 'FID' and 'Shape' columns. The table data is as follows:

FID	Shape
0	Polyline
1	Polyline
2	Polyline
3	Polyline
4	Polyline
5	Polyline
6	Polyline
7	Polyline
8	Polyline
9	Polyline
10	Polyline
11	Polyline
12	Polyline
13	Polyline
14	Polyline
15	Polyline
16	Polyline
17	Polyline
18	Polyline
19	Polyline
20	Polyline
21	Polyline
22	Polyline
23	Polyline
24	Polyline
25	Polyline
26	Polyline
27	Polyline
28	Polyline
29	Polyline
30	Polyline
31	Polyline

At the bottom of the window, the 'Toolsbox' is visible, containing 'Results', 'ArcToolbox', and 'Catalog Tree'. The 'Preview' and 'Table' tabs are also present at the bottom right.

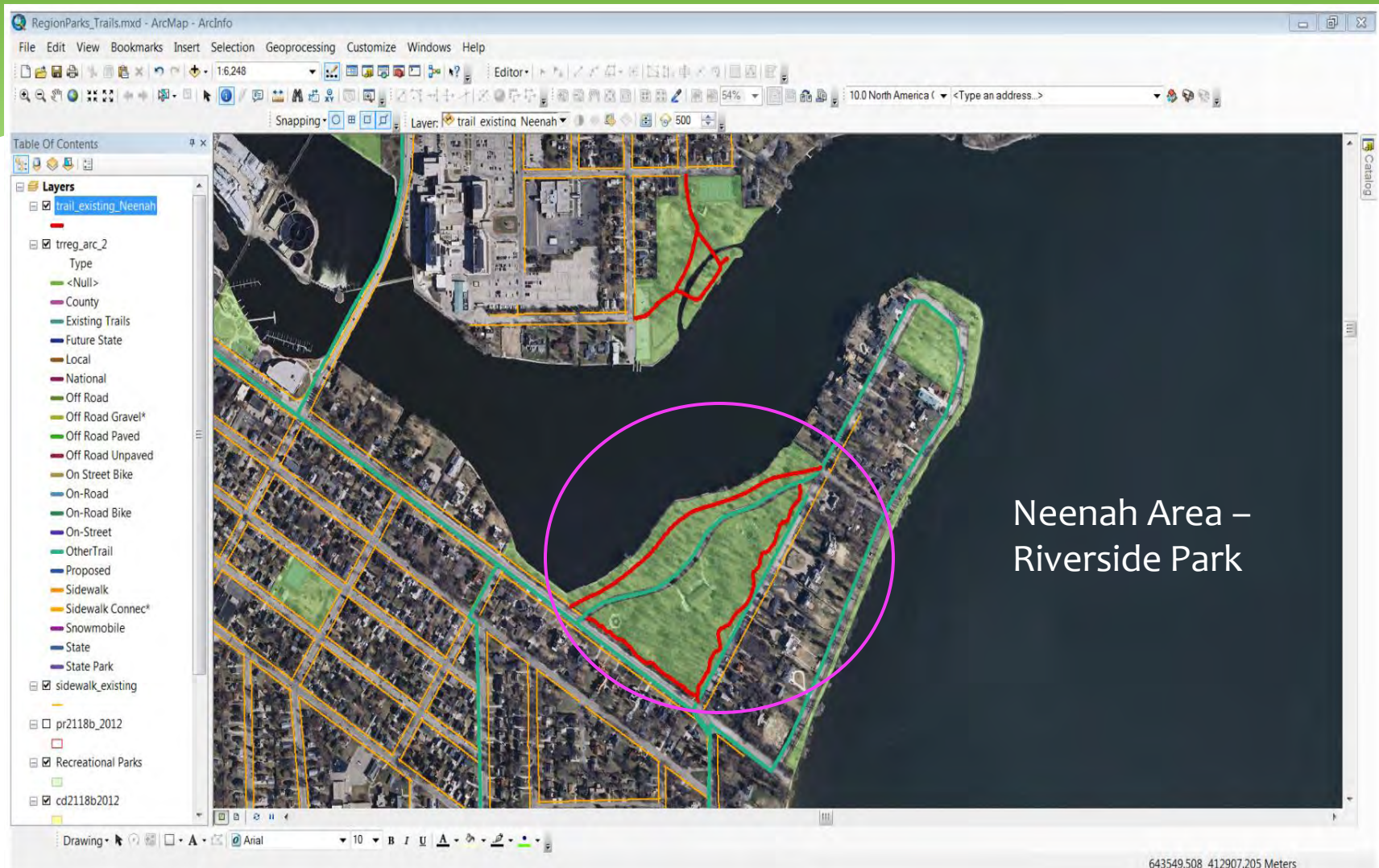
CITY OF NEENAH

Shape and Tag field only

The screenshot shows the ArcCatalog application window. The title bar reads "ArcCatalog - ArchInfo - O:\1328FCoshBP\FCOshkBikePedPlan". The menu bar includes File, Edit, View, Go, Geoprocessing, Customize, and Window. Below the menu bar is a toolbar with icons for opening files, saving, printing, and other standard functions. A status bar at the bottom indicates the current location: "Location: O:\1328FCoshBP\FCOshkBikePedPlan\Data\FoxCities\TC...". The main area is titled "Catalog Tree" and displays a hierarchical folder structure. The tree starts with "Folder Connections", followed by drives C:, E:, F:, N:, and O:. Under drive O:, there is a folder named "O:\1328FCoshBP". This folder contains two items: "BrownCountyWL_Street_GeoDatabase_20100217.g..." and "FCChamberLogos". The "FCChamberLogos" folder is expanded, showing its contents: "FCOshkBikePedPlan" and "Data". The "Data" folder is further expanded, revealing a sub-folder "FoxCities". Inside "FoxCities", there are several folders: "fcbrochure", "Potty", "TGCute_Trails-Future_line", "Trails-Existing_line", "Trails-Future_line", "Trails-Sidewalks-Existing_line", "Trails-Sidewalks-Future_line", and "Trails-Sidewalks-Future_line". At the bottom of the window, there is a taskbar with three active windows: "Results", "ArcToolbox", and "Catalog Tree".


TOWN OF GRAND CHUTE Shape and Layer field only

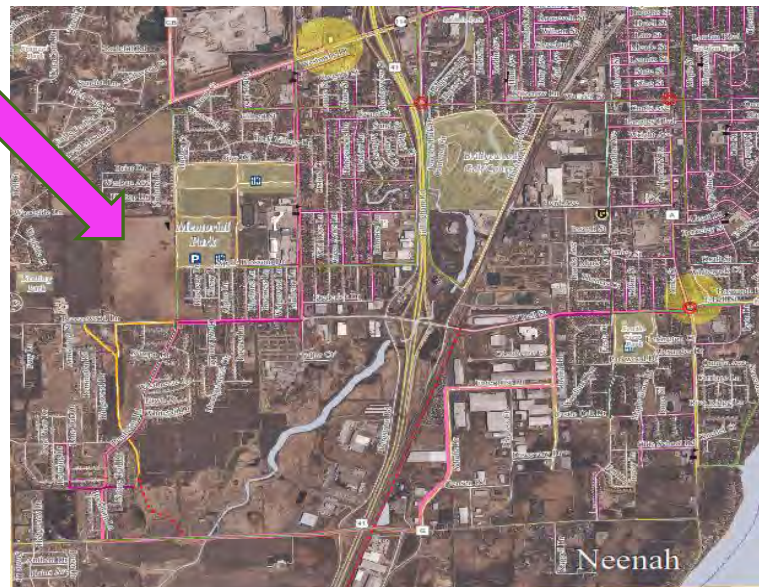
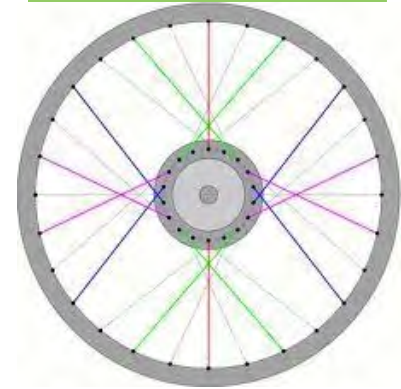
Data discrepancies



Blue line is existing regional data, Red is from City.

Mapping of the Fox Cities Paper Trail

- * Utilizes already existing trails and proposed trail-ways as it overlaps these features on the map(s).
- * Like the Green Circle trail in Portage County, this trail's vision is to be a circle around the Fox Cities with interurban trail-way connections inside the Fox Cities region.
- * Like the spokes of a wheel. Look familiar? 
- * Each colored spoke represents a trail interconnection into the urban center of the Fox Cities from the surrounding circle – the Paper Trail.



Oshkosh urbanized area



Oshkosh–Data Gathering:

- * Fortunate in Oshkosh -
- * The City recently completed their Bicycle and Pedestrian plan September, 2011.
- * Fresh and new data with proposed and existing routes.
- * EASY RIGHT?



City of Oshkosh, Wisconsin
Pedestrian and Bicycle Circulation Plan

September 2011

No - Data is Still a challenge in Oshkosh

- * The City also used different trail categories.
- * Oshkosh's attributes for use in their city's bike and ped plan =
- * Dashed Sign & Shareway, Dashed Signed, Sign & Strip Sign & Shareway & Offroad, for its Bike Routes.



For Bike Routes many Categories also Existed:



- * Similar but still different than all data received.
- * Lots of categories but close in description.
- * Even longer when you add in Oshkosh with the Fox Cities.

Legend

- Launch
- Portage
- Libraries
- Hospitals
- Schools
- Destination Area*
- Retail Stop Area**

Trails

- Off Road
- Off Road Gravel
- Off Road Paved
- Off Road Unpaved
- On Street Bike
- On-Road Bike
- On-Street
- Proposed
- Sidewalk Connection
- Paper Trail
- Dashed Sign & Shareway
- Dashed Signed
- Sign & Stripe
- Sign & Shareway

RiverTrail

- Metropolitan Planning Area
- Unincorporated Areas
- Navigable Water
- Water Areas
- Fox Cities Parks
- Oshkosh Parks

Fox Cities Visitor Areas

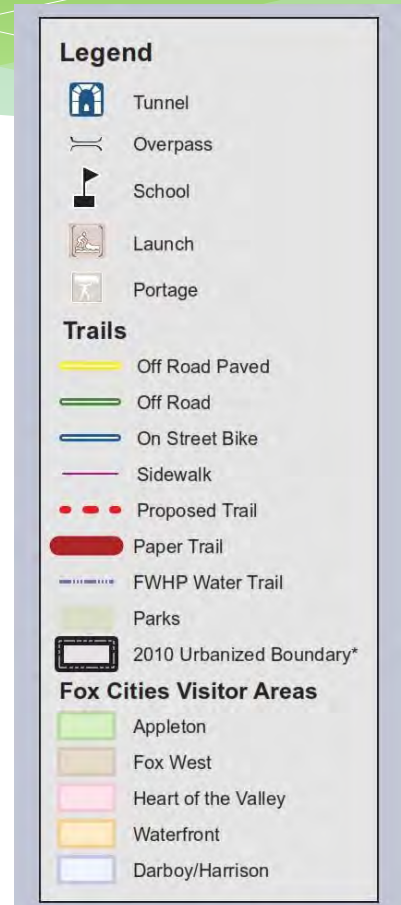
- Appleton
- Fox West
- Heart of the Valley
- Waterfront
- Darboy/Harrison
- City of Oshkosh

So how do we join and merge the data to be more regionally uniform?



POSSIBLE SOLUTIONS:

1. Group the type of trail - Off Road Paved, Off Road, On-Street Bike, Sidewalk, Proposed.
2. Develop Sub-categories depending on level of detail needed - off and on road facilities could be grouped to generalize per municipalities based on data received. i.e. Surface Type, Name of Trail etc. Field work may be needed.
3. Attributes could be changed to accommodate what is needed in the plan document - project specific standards for the Fox Cities and Oshkosh MPO areas.



Areas and Data we are still missing

City and Town of Kaukauna – Sidewalks and Trails

Village of Combined Locks – Sidewalks and Trails

Village of Little Chute – Additional Sidewalks

Village of Kimberly – Sidewalks

Village of Wrightstown – Sidewalks and Trails

Town of Algoma - Additional Trails(if available, Cty data used)

Town of Black Wolf - Additional Trails(if available, Cty data used)

Town of Center – Additional Trails (if available, Cty data used)

Town of Clayton – Additional Trails (if available, Cty data used)

Town of Ellington – Additional Trails(if available, Cty data used)

Town of Freedom- Additional Trails(if available, Cty data used)

Town of Grand Chute – New data once plan is finished (planned)

Town of Menasha – New data once plan is finished (planned)

Town of Nekimi - Additional Trails(if available, Cty data used)

Town of Omro - Additional Trails(if available, Cty data used)

Town of Vandebroek - Additional Trails(if available, Cty data used)

Town of Vinland - Additional Trails(if available, Cty data used)

Town of Woodville - Additional Trails(if available, Cty data used)

SUMMARY – AND KEY POINTS



- ✘ GIS trails data were pretty much non-existent until recently. Data is just now starting to be created 2005-2010, to present.
- ✘ Utilizing a GPS unit will provide ground-level accuracy. - The Town of Greenville has already taken this approach in mapping of their trails. ECWRPC hopes to do the same as we move through the data creation process and merging but may be a separate project based on the grant budget available.
- ✘ PRELIMINARY MAPPING COMPLETED - ECWRPC staff was able to heads up digitize current trails on the ground using ARCGIS software and current orthophotography with Bing Maps Birds Eye View where voids existed.
- ✘ Obtaining Sidewalks data is still a challenge – we are missing many areas in the Heart of the Valley from the list mentioned.

WE NEED YOUR HELP !



- * There are many gaps yet to filled and much to review on the accuracy of the data itself - both for the Proposed and Existing trails data.
- * Missing sidewalks for Combined Locks, Kimberly, Kaukauna, parts of Little Chute, etc.
- * Please take a look at the maps we have presented. Is our data correct, accurate? Does the mapping need editing? **(More than likely yes!)**
- * **You** are the resource we need to get this plan done correctly and have it be a viable product for the future planning of our trailways.

Thank you for your time!

- * Contact information:

- * **Trish Nau**

- * GIS Coordinator / Recreation Planner

- * East Central Wisconsin Regional Planning Commission

- * 400 Ahnaip Street, Suite 100

- * Menasha, WI 54952

- * Phone: 920-751-4770 x6814

- * Fax: 920-751-4771

- * www.eastcentralrpc.org

- * Email: tnau@eastcentralrpc.org

