

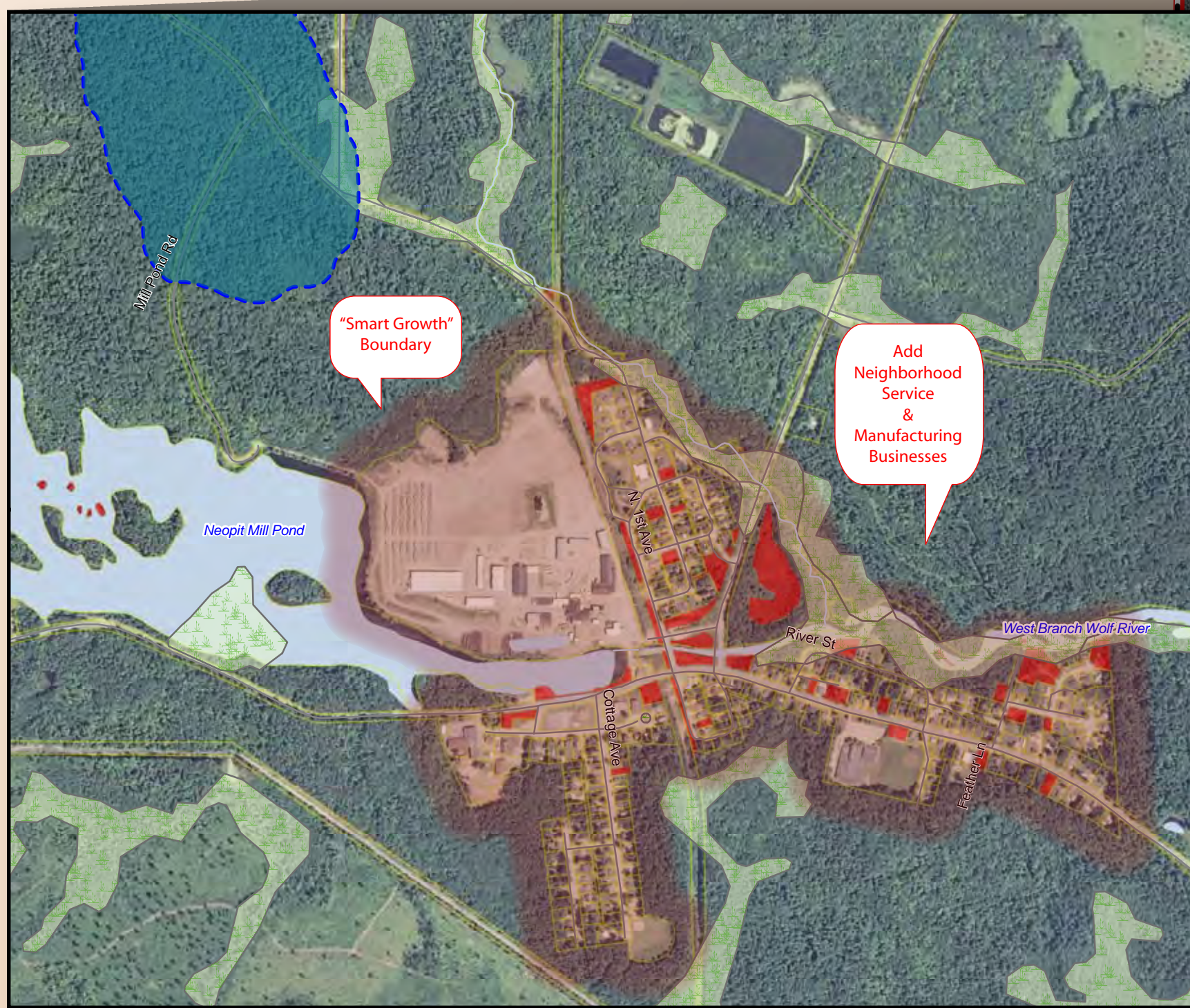
Menominee County / Town Comprehensive Plan



How to Use This Map

The broad land use designations created for this plan offer guidance as to the types and intensity of future land uses and activities for various parts of Menominee Town/County. The State's "smart growth" standards state that all local level land use decisions (i.e., zoning, subdivision actions, etc.) need to be consistent with the community's adopted comprehensive plan. Therefore, all future changes in land use should be weighed against this map and the plan's general goals, strategies and recommendations in terms of consistency.

While the map indicates certain general target areas for new development and/or land use activities, an overall caveat of "land suitability" should also apply to any new land use proposal that occurs within Menominee Town/County's jurisdiction. Site level conditions (such as soil capabilities, slopes, hydrology, and aesthetics) as well as regional impacts (transportation, surface and groundwater, service provision, etc.) need to be taken into consideration whenever plans and projects are reviewed and approved.



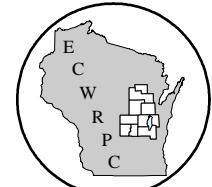
We abuse land because we regard it as a commodity belonging to us. When we see land as a community to which we belong, we may begin to use it with love and respect.

-Aldo Leopold (1886-1948)

Exhibit 10 - 1 Menominee County / Town Comprehensive Plan Future 2030 Framework Map



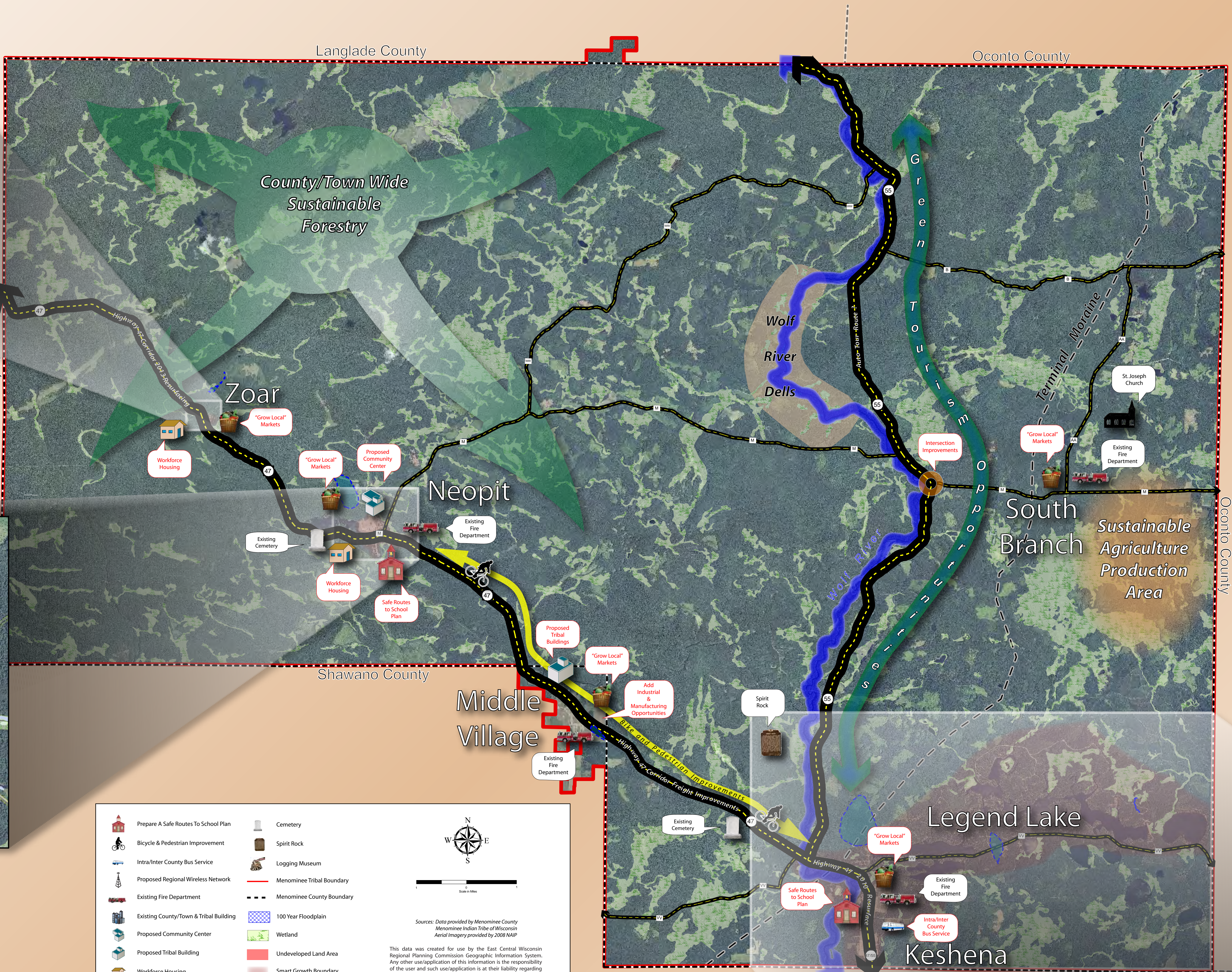
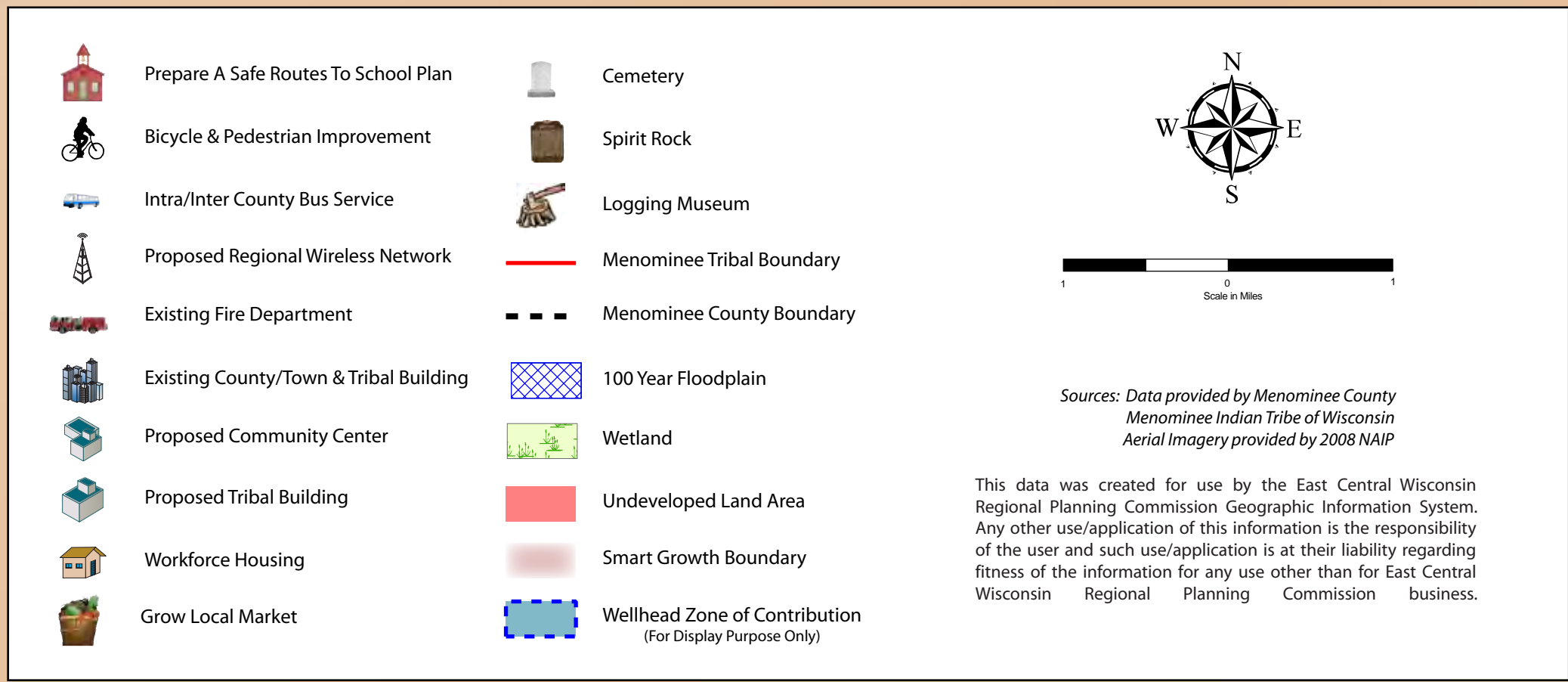
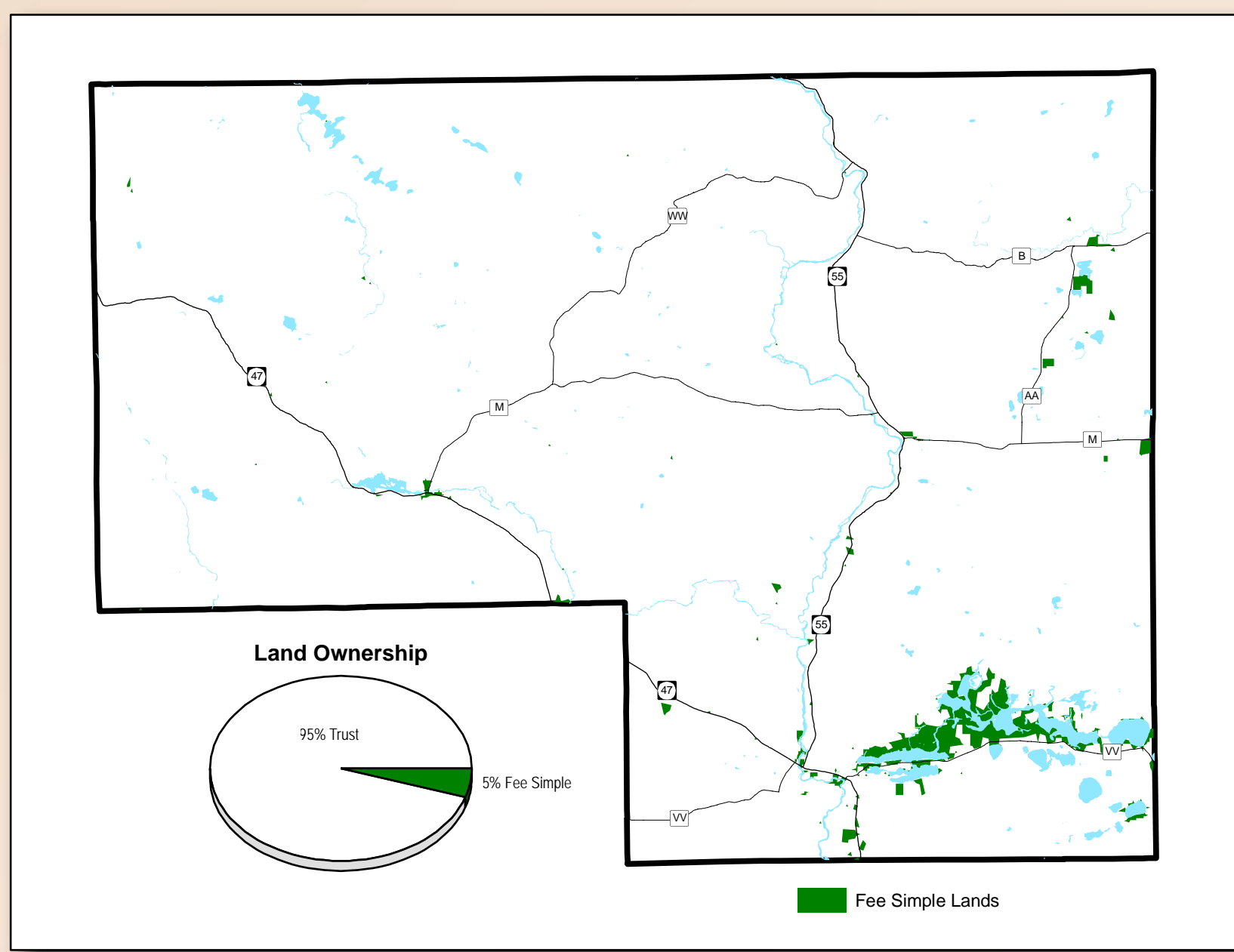
Adopted December 17, 2009
East Central Wisconsin
Regional Planning Commission
400 Alnapp Street
Menasha, WI 54952
www.eastcentralrpc.org



Intergovernmental Cooperation is the Key

The Comprehensive Plan recognizes the need to coordinate and cooperate on future land use needs and decisions with the Menominee Nation and its co-terminus governmental jurisdictions. Given that the County/Town lays wholly within the Menominee Nation reservation boundaries, county/town control over land use does not exist on a majority of the lands. As the accompanying figure indicates, only about 5.0% of the land area is considered "fee-simple" and under County/Town control, while the remainder exists in tribal "trust" status. The pattern of "fee-simple" land ownership is fragmented and further complicates the delivery of services throughout the County/Town. The plan recognizes that the Menominee Nation is in control of a majority of the land areas within the County/Town, and that more lands may be put into trust status over time. The County/Town plan also seeks to minimize the impact of a shrinking land base, while mutually planning for new development, infrastructure, and services so as to fairly and adequately provide for its residents and businesses.

Smart Growth areas have been defined throughout the County/Town and are illustrated on the Comprehensive Plan map. These areas are designated conceptually to identify lands that are most likely to accommodate development over the plan's life. Two basic criteria were used to map out these areas: 1) The existence of vacant lands which could accommodate development, and; 2) The proximity of these lands to existing development and services (generally within 300 feet of a road and/or having access to public sewer or water infrastructure). In general, a majority, if not all, future development should be targeted to these general areas over the next twenty years.



A Vision for the Future

Visioning is a process in which the community discusses what type of future it wants to achieve. The vision statements presented in this plan describe a year 2030 view of the County/Town in terms of our community, our environment, and our economy. The thematic vision statements presented in this plan are based on the input received at numerous public participation events including focus groups, public information meetings, and Plan Commission meetings.

Land Use: The County and Town of Menominee have accommodated new growth in ways that preserve the natural resources (forests, wetlands and water features). Eco-friendly design principals have been incorporated to lessen the impact on the environment and restored lands that have previously been impacted. The majority of new development has occurred in the established communities of Keshena, Neopit, Zoar and the developed lake area in the southern portion of the county.

Economic Development & Housing: The County/Town of Menominee should work cooperatively and collaboratively with the Menominee Tribe and other agencies to improve the local and regional economic and housing conditions. By 2030, the County/Town envisions that it will be:

- A mix of forestry, manufacturing and service employment;
- A retirement/recreation community (i.e. tourism emphasis);
- A "bedroom" community for out-of-county employees; and
- A leader in the development of a sustainable "new economy".

Transportation: In 2030, Town/County residents have access to a network of well-maintained local roads, and county and state highways that address the needs for mobility for automobiles and the movement of freight. A comprehensive public transportation system is available and has filled the needs of county residents. To encourage residents to exercise more, a network of walking and biking trails have been established in the county.

Utilities and Community Facilities: The County/Town of Menominee, through cooperative planning and enhancement of existing partnerships with the Menominee Tribe and other agencies provides residents with a level of municipal services and facilities that are adequate to maintain public health, welfare and sustain a vital economy.

Agricultural, Natural and Cultural Resources: The County/Town of Menominee, through cooperative planning and enhancement of existing partnerships with the Menominee Tribe and other agencies, has been successful in preserving the abundance of natural resources, including forestland and water quality, within the county. These partnerships have also extended access to locally grown foods through expansion of the community gardens and local foods programs. Finally, the preservation of the cultural heritage and language of the Menominee Nation remains strong.

Intergovernmental Cooperation: In 2030, strong and supportive intergovernmental relationships exist between the County, Tribe and their neighbors, as well as the State of Wisconsin and the Federal Government. These external relationships allow for the consistent and timely sharing of information, data and responsibilities for social programs, economic development, healthcare and other programs. While some duties internal to the County have been kept separated, the combining of resources has allowed for increased coverage and level of services.

A Snapshot of the Future

An understanding of the current and future make up of the County/Town of Menominee's population is important to determining land use needs and solutions. Menominee County's population is expected to increase from 4,853 people in 2010 to 5,290 people in 2025 before becoming more stable and declining slightly to 5,243 people in 2030.

Jurisdiction	2000	2010	2015	2020	2025	2030
Menominee County/Town	4,862	4,853	5,090	5,247	5,290	5,243
Shawano County	40,664	43,631	44,738	45,733	46,687	47,320
East Central Region	609,558	667,636	691,308	714,939	737,521	756,877
Wisconsin	5,363,715	5,751,470	5,931,386	6,110,878	6,274,867	6,415,923

Sources: 2000-2030 Population Projections for Communities in East Central Wisconsin, Oct. 2004. ECWRPC

More information and interesting facts about the County/Town of Menominee are written around the perimeter of this map.

Incorporating Principles of Smart Growth

Smart growth is a concept which calls for maximizing the public benefit while minimizing the public costs associated with planning for new development and accommodating for future land use needs. Smart growth is a broad concept which has no single "correct" outcome, but rather, its principles are applied to a community in a manner which suits its particular needs. The community's (the County/Town in this case) geography, economy, culture, resources, and other factors come into play when seeking smart growth solutions to existing and future land use and development issues. Most importantly, smart growth principles are developed based on significant public input which is provided during the plan development process.

The County/Town of Menominee Year 2030 Comprehensive Plan incorporates many principles of smart growth. During the plan's development, Vision, Goal and Strategy statements were developed to guide the County/Town of Menominee in implementing land use and development decisions.

The proposed Comprehensive Plan specifically incorporates smart growth principles and concepts which can generally be described under one of the following categories:

- Protection and Utilization of Resources
- Protection of Cultural & Historical Identity
- Improvement of the Local Economy
- Cost-Effective Infrastructure Usage
- Transportation Maintenance and Improvement
- Promotion of Sustainable Practices
- Intergovernmental Cooperation

Vision without action is a dream.
Action without vision is simply pass-
ing the time. Action with Vision is
making a positive difference.
- Joel Barker

