

US 41 Corridor
State Line to Green Bay

October 30, 2015
ECWRPC



US 41 Conversion

www.41conversion.wi.gov



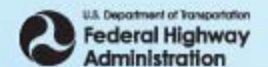
U.S. Department of Transportation
**Federal Highway
Administration**

Study Area

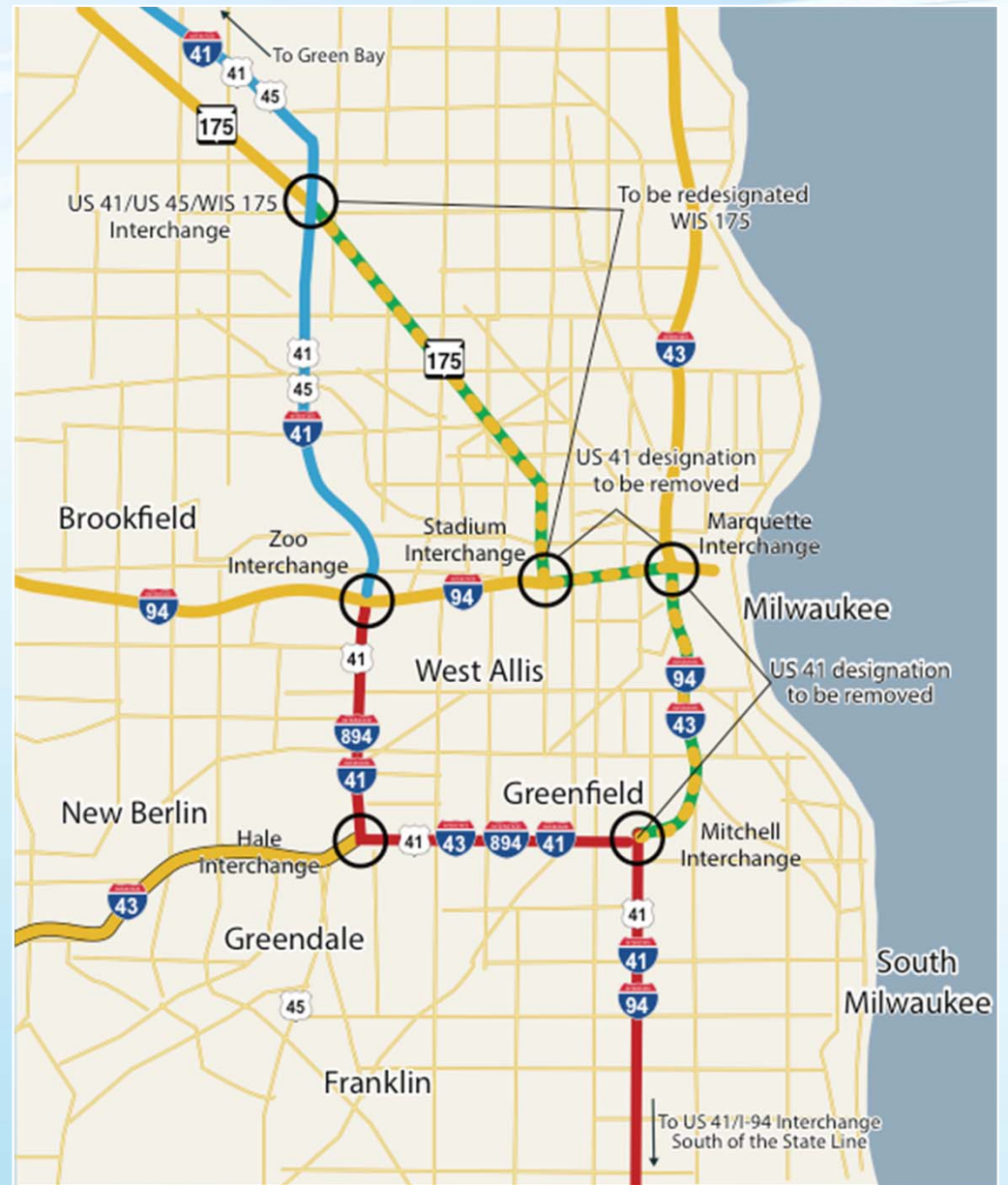
- North
- LEGEND
- Proposed Interstate conversion and newly designated I-41 route
 - Proposed I-41 signing added to existing Interstate (Designated I-41)
 - US 41 Not included in the designated interstate route



US 41 Conversion



Milwaukee Area



US 41 Conversion



U.S. Department of Transportation
Federal Highway Administration

Purpose and Need

Purpose

- To enhance and accelerate economic development by converting and signing the US 41 corridor to an Interstate highway

Need

- Legislation
- Economics



US 41 Conversion



Economics

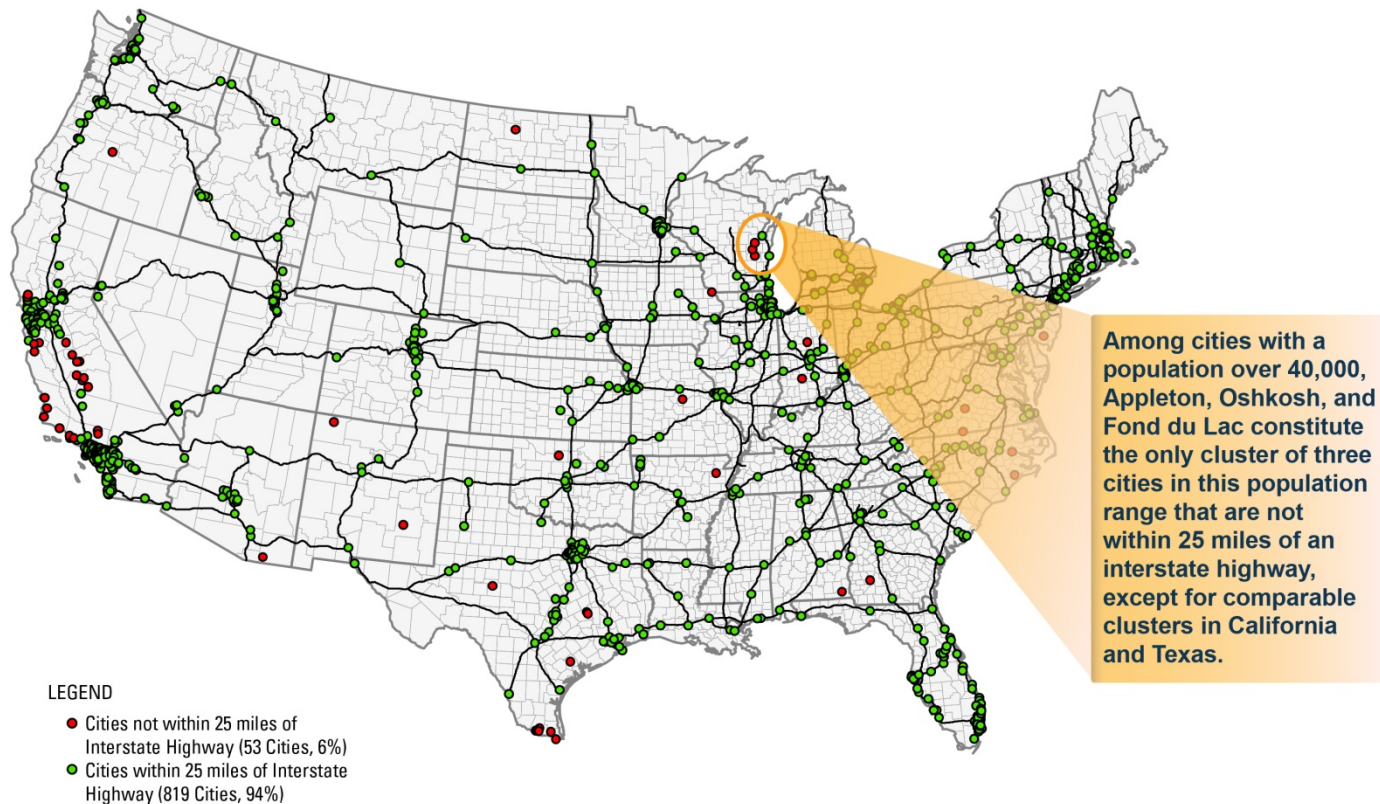
Interstate conversion helps:

- Business recruitment
- Job creation
- Business retention and expansion
- Tourism
- Property values



Area Underserved

Cities in the Fox Valley stand out among peer communities nationally as being underserved by the interstate system



US 41 Conversion

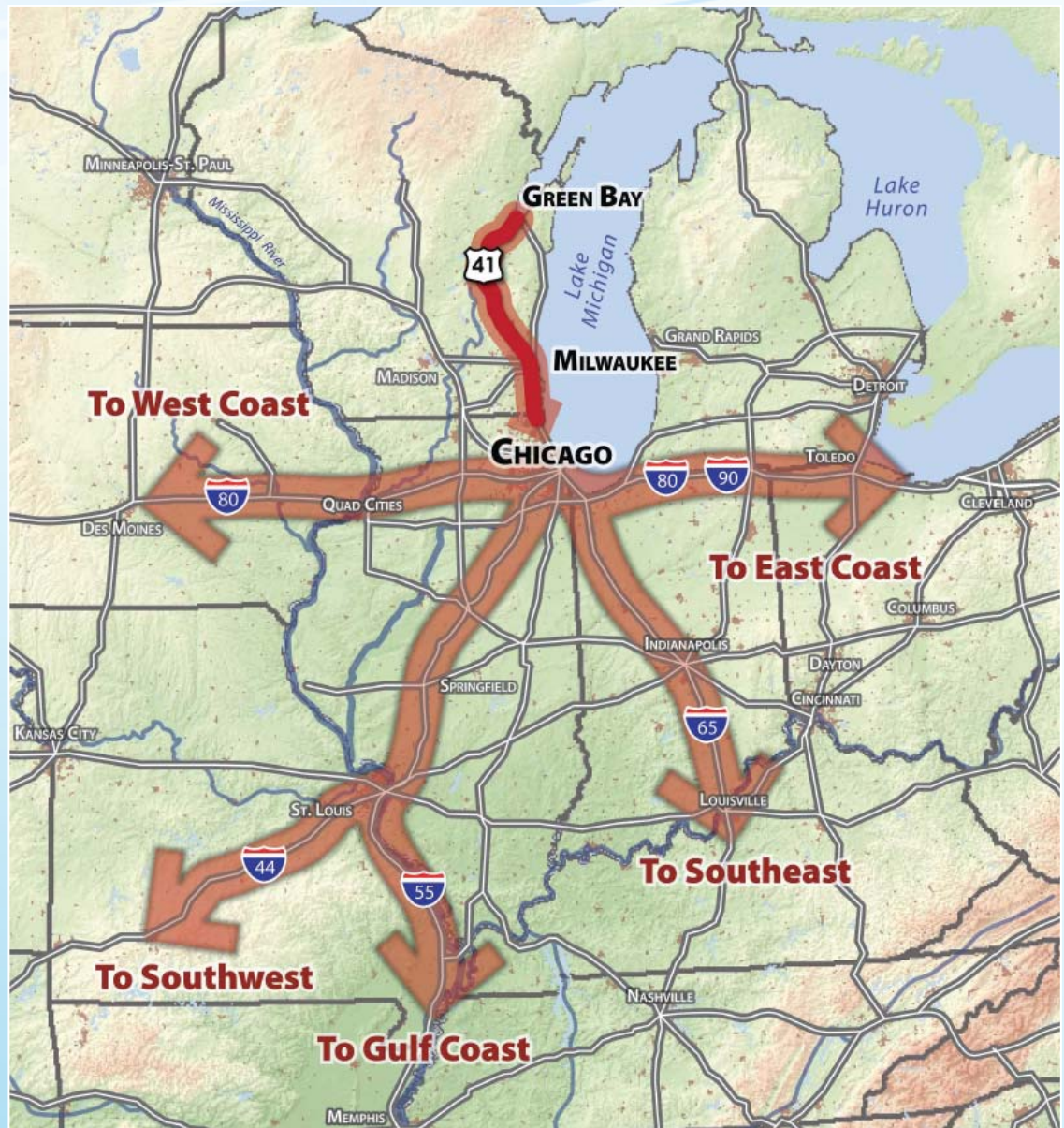


U.S. Department of Transportation
Federal Highway Administration

Primary Connection to the Nation



US 41 Conversion

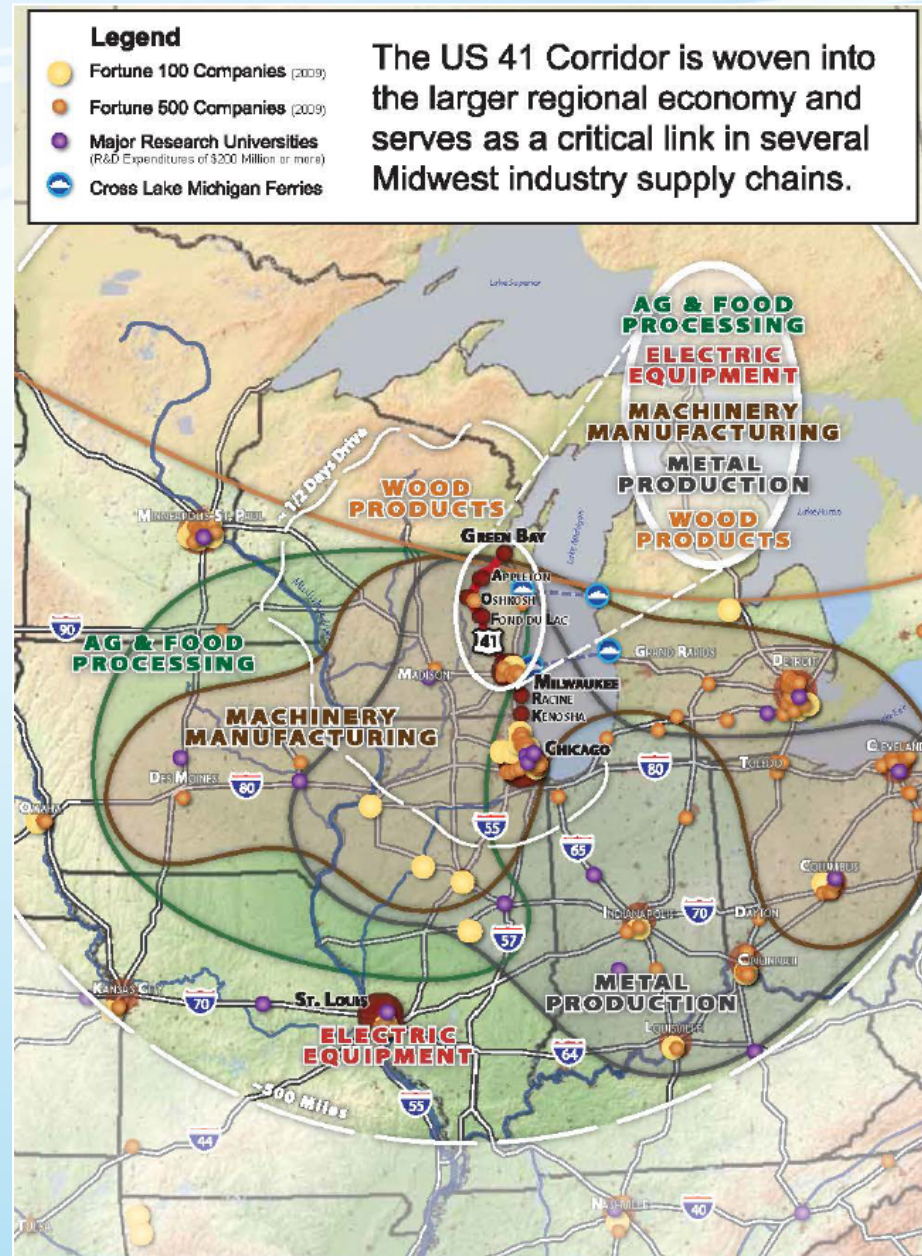


U.S. Department of Transportation
**Federal Highway
Administration**

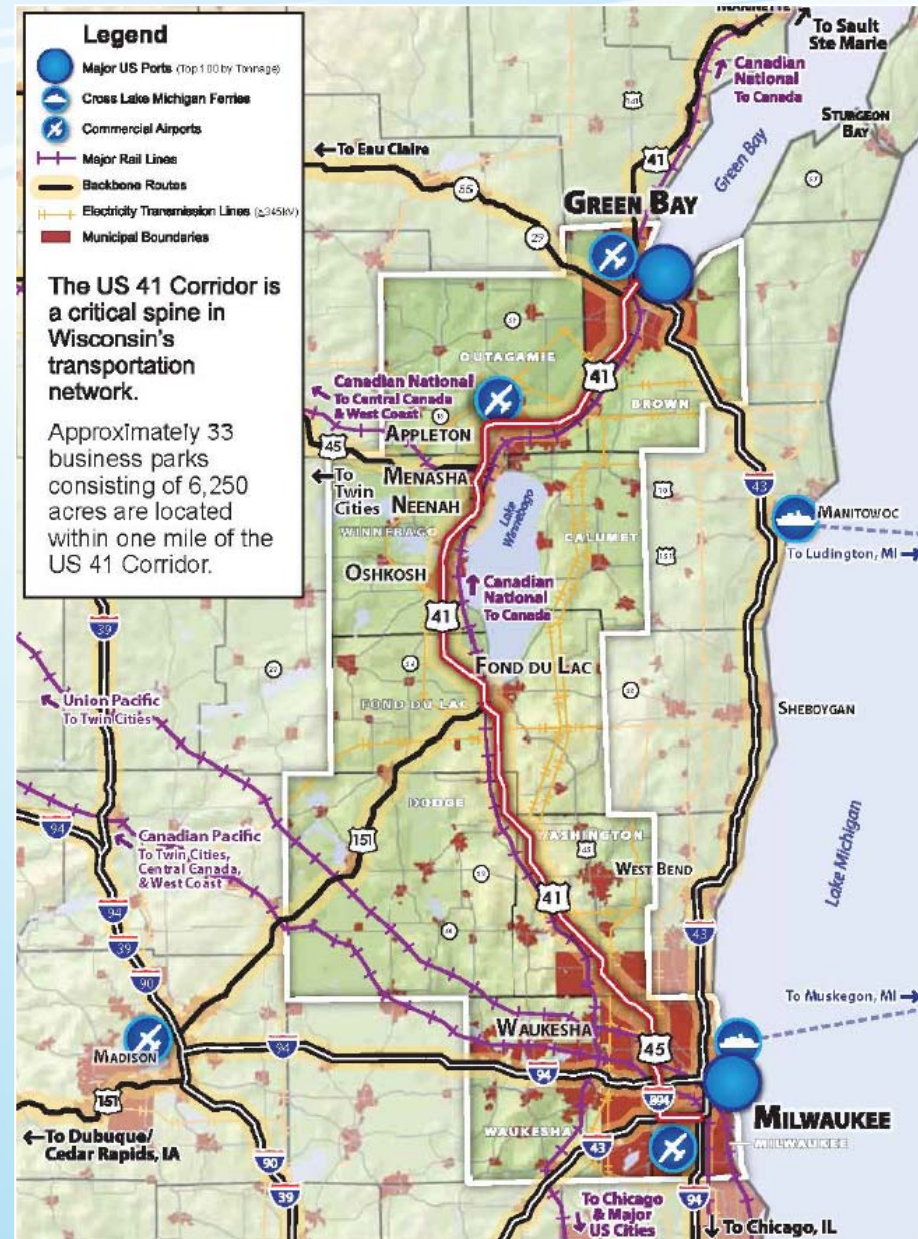
Strong Midwest Economic Relations



US 41 Conversion



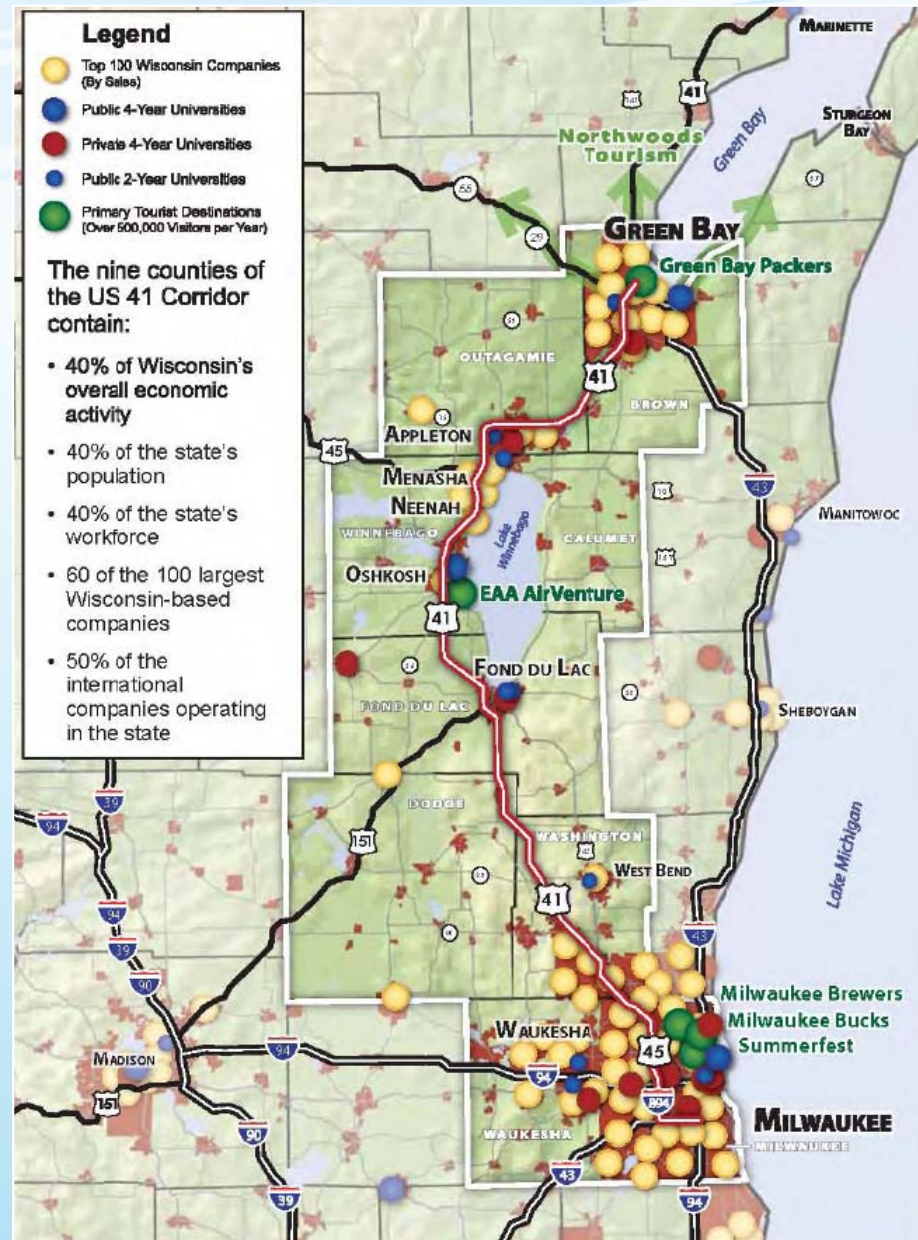
Transportation and Infrastructure Assets



US 41 Conversion



Economic and Workforce Assets



US 41 Conversion



Outdoor Advertising

Interstate Highway regulations

- Existing conforming signs are now nonconforming
- New off-property signs can only be installed in limited areas
- Allows for highest and best use of land along corridor



US 41 Conversion



Grandfathering Legislation

HR2353

- Allows current hauling practices to continue on I-41
- WisDOT would not convert without legislation



US 41 Conversion



U.S. Department of Transportation
**Federal Highway
Administration**

Future Projects

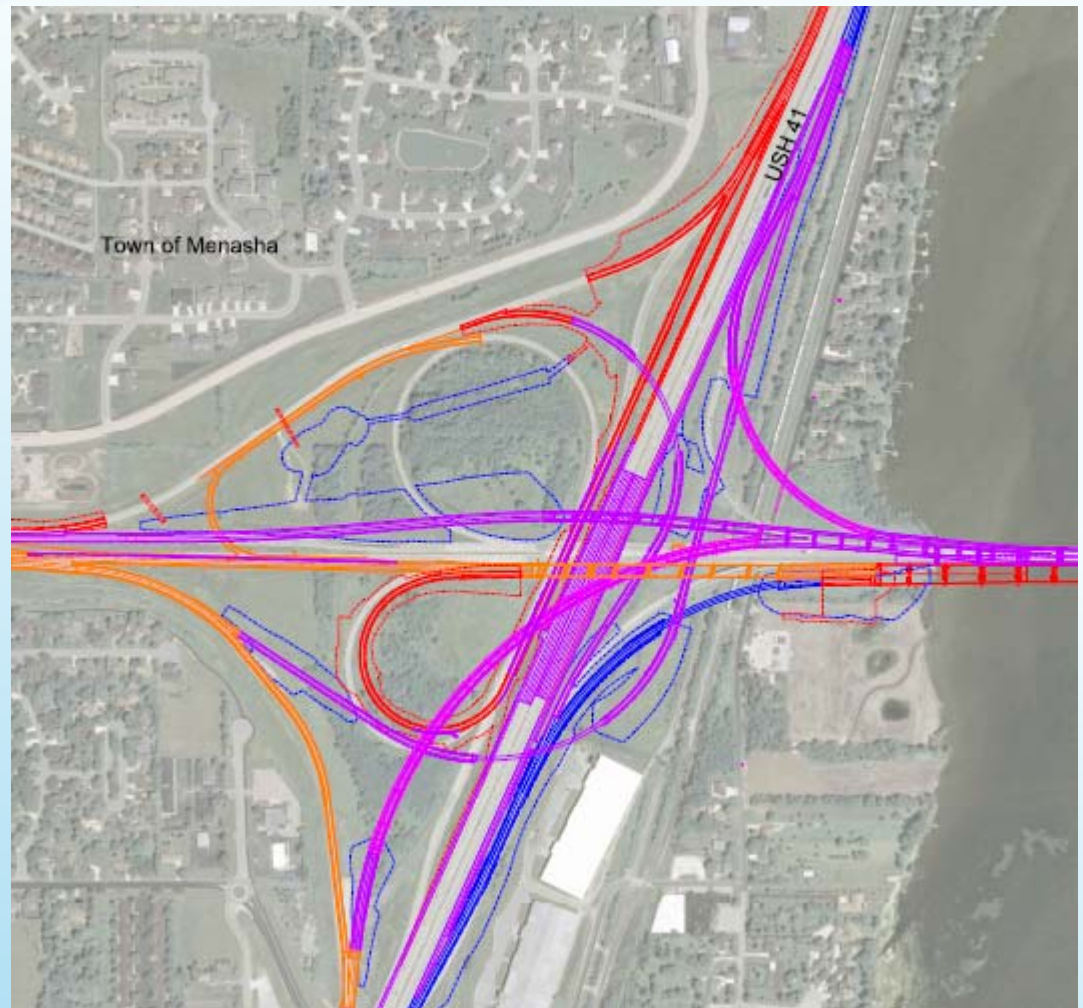
Programmed resurfacing projects



Current major/mega projects



Improved Interchanges



US 41 Conversion



U.S. Department of Transportation
**Federal Highway
Administration**

Going Forward

- FHWA officially added the I-41 corridor to the Interstate system, April 7, 2015
- Interstate shields will be completed by fall 2015



US 41 Conversion



U.S. Department of Transportation
**Federal Highway
Administration**

A landscape photograph showing a multi-span concrete bridge crossing a wide river. The sky is filled with dramatic, dark clouds, with a bright sunset or sunrise glow on the right side. The foreground is a grassy field. The word "Questions?" is overlaid in large white text in the lower center.

Questions?