

East Central Wisconsin Regional Planning Commission

Annual Report 2012-2013



East Central Wisconsin
Regional Planning Commission

ECWRPC

Calumet • Menominee • Outagamie • Shawano • Waupaca • Waushara • Winnebago

An Economic Development District and Metropolitan Planning Organization

YEAR 2030 REGIONAL COMPREHENSIVE PLAN

Goals, Strategies, and A Plan For Action

Exhibit LU-1: Year 2030 Regional Framework Map



Milestone #3: Goals, Strategies, and a Plan for Action: This report was completed in early 2008 and contains detailed strategies and recommendations based off the original work of the TACs. A Regional Framework Map, shown here, a Transportation Recommendations Map, and dozens of supporting Regionally Significant Features Maps were also produced to effectively portray the plan's visions and recommendations. Lastly, the report addresses overall plan implementation and monitoring.

April 26, 2013

To the Citizens of the East Central Region:

After completing my first year as Chair of this unique and effective organization, I realize that the issues facing 'my community' are not dissimilar from those in other communities that lie within our region. Menominee County is a drastically different environment from that of our urban counties in the Fox Valley and we have our share of unique concerns. Even with these differences, strong geographic, economic, and social networks bind us together and reinforce the need to achieve common goals that better our residents' lives.

To that end, I am pleased that the Commission took the time during its 40th Anniversary to re-examine itself as an organization. The production of our first *Strategic Plan* in 2012 will serve the Commission well in the coming years. If nothing else, the process enlightened many of our own Commissioners as to the importance of our organization's work. This is evidenced by our newly adopted Mission Statement which reads:

***East Central builds relationships and cooperative, visionary growth strategies
that keep our region beautiful, healthy, and prosperous.***

These are important words to communicate as we collectively rise to meet short-term challenges facing our counties and communities such as job creation, economic development, and the repair and maintenance of the infrastructure. We must also acknowledge the long-term social, economic and environmental trends which will negatively affect the physical and social fabric of the region if we are not collectively and individually prepared through proper planning.

An aging population will demand different transportation and land use solutions as mobility is a key element in any society. The ability to create jobs and attract and retain young, energetic, and entrepreneurial persons relies on our ability to create a climate that is favorable to a 'post-carbon economy'. We will need to rely equally as much on the various elements that contribute to the quality of life within our region – recreation, greenspace, environmental quality and culture – so that our communities are truly livable and healthy. The overall need to balance our energy consumption and make our communities more resilient to the impact of climate change will require significant planning resources to chart the path of change. Many of these issues have regional components and we as a collaborative group of counties must continue to find ways to engage each other, our communities, and the general public in these conversations at every scale.

As illustrated in this year's *Annual Report*, many planning efforts were initiated or completed by the Commission through its *Annual Work Program* and by using its formal *Regional Comprehensive Plan* as a guide. The Commission has more work to do in the future and we will need to continue to adapt and change as an organization in order to meet the needs of the region. We must find new ways to communicate, educate, receive public input, and achieve regional consensus and action on the implementation of the important "plans" that already exist, not to mention the work required to update and develop new plans.

Let us not forget about the importance of planning in our daily lives as we move forward into 2013 and beyond. I, for one, look forward to addressing these challenges and I hope that you do as well.

Sincerely,



Robert Hermes, Chair

Menominee County

Table of Contents

Chairman’s Letter to the Region	i
Introduction	1
Commission Overview	3
Description of the Region	15
Regional Comprehensive Planning Program	19
Community Facilities Planning Program	23
Transportation Planning Program	29
Open Space and Recreation Planning Program	45
Economic Development & Housing Program	51
Environmental Management Planning Program	59
Local Assistance Planning Program	69
Geographic Information System Program	71
Information Technology Program	75
Commission Administration	77
Appendix A - Technical Advisory Committees	79
Appendix B - New Publications	83
Exhibit 1 - East Central Region, Membership Status, 2013	4
Exhibit 2 - Roster of East Central Counties and Commissioners, May 1, 2012	9
Exhibit 3 - Commissioner Photographs	10
Exhibit 4 - East Central RPC Table of Organization, 2012-13	12
Exhibit 5 - East Central RPC Staffing, 2012	12
Exhibit 6 - East Central RPC Revenue Sources, 2012	13
Exhibit 7 - East Central Budget/Levy History	13
Exhibit 8 - East Central RPC 2012 Levy Distribution	13
Exhibit 9 - Historic and Projected Population of the East Central Region	17
Exhibit 10 – East Central Region – Total Population-2010	18
Exhibit 11 – East Central Region - Community Facilities Sewer Service Areas	27
Exhibit 12 – Fox Cities Bike & Pedestrian Crashes, Jan. 2005 – Nov. 2012	40
Exhibit 13 – East Central Region – Existing Public Parks & Trails	48
Exhibit 14 –Global Trade Outagamie County Export Shipments (PIERS)	54
Exhibit 15 – Wisconsin Ledge American Viticultural Area	64
Exhibit 16 –NR-135 Permit Summary, 2012	65
Exhibit LU-1 – Year 2030 Regional Framework Map	Inside front cover
Exhibit T-1 – Priority Transportation Projects/Plans/Studies	Inside back cover

10 WAYS EAST CENTRAL ENHANCES YOUR QUALITY OF LIFE!

ECWRPC...

1. Improves transportation and mobility
2. Better connects housing & jobs
3. Creates a competitive economic environment
4. Promotes efficient public services
5. Protects critical environmental areas
6. Ensures high value recreation opportunities
7. Preserves heritage, culture & sense of place
8. Fosters cooperation & policy coordination
9. Provides outreach, advocacy & education
10. Supports your counties & communities

Introduction

The *2012-13 Annual Report* illustrates the accomplishments and activities of the Commission during the past calendar year. It serves to document the Commission's progress toward the achievement of regional goals related to land use, development and preservation. It also provides a regional context for local or county-level land use planning efforts and issues, and identifies products (Appendix B) resulting from the work activities of the Commission that may be of use to local units of government.

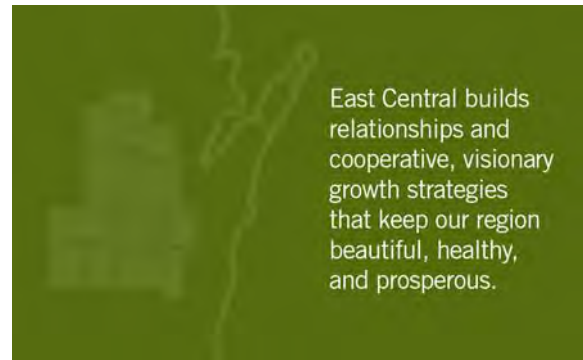
The report contains two major sections. The first section is an overview of the Commission; the second section is a compilation of the tasks and activities undertaken by the Commission staff during 2012.

The first section provides an overview of the Commission in regard to structure, roles, responsibilities, and planning functions. This section describes the organizational arrangements, roles and responsibilities of the various agencies involved in the planning and decision making process used to prepare, implement and periodically re-evaluate the policy and action recommendations of the Commission. This section also describes the approach used in developing planning work programs and the management of the planning process, while addressing the specific requirements of the various federal and state grant programs and outlines how they will be achieved through the scheduled work activities.

The second part of this report contains specific information regarding the regional and local tasks and activities that were worked on or accomplished by Commission staff during 2012 and are organized in a manner which reflects the structure of the Commission's *Annual Work Program & Budget* that is prepared and adopted in July of each year.

The *Annual Work Program & Budget* is structured in a manner that will, over time, mirror the framework of the Commission's adopted *Year 2030 Regional Comprehensive Plan*. The regional comprehensive plan will serve as the 'umbrella' with a number of distinct, yet interrelated, planning programs falling

www.ecwrpc.org



underneath it. These planning programs include community facilities, transportation, economic development, open space and recreation, and environmental management. All of these programs are focused on comprehensive planning in that they emphasize land use interrelationships and take into



East Central Wisconsin Regional Planning Commission Offices.

account the environment, the economy and the community. Each program element receives direction from the regional comprehensive plan (regional goals and strategies) and provides feedback to it (policies and recommendations).

In addition to the comprehensive program elements, other planning programs address current (local) planning and assistance such as the geographic information systems (GIS) planning and information technology (IT) systems programs.

Commission Overview

Commission History

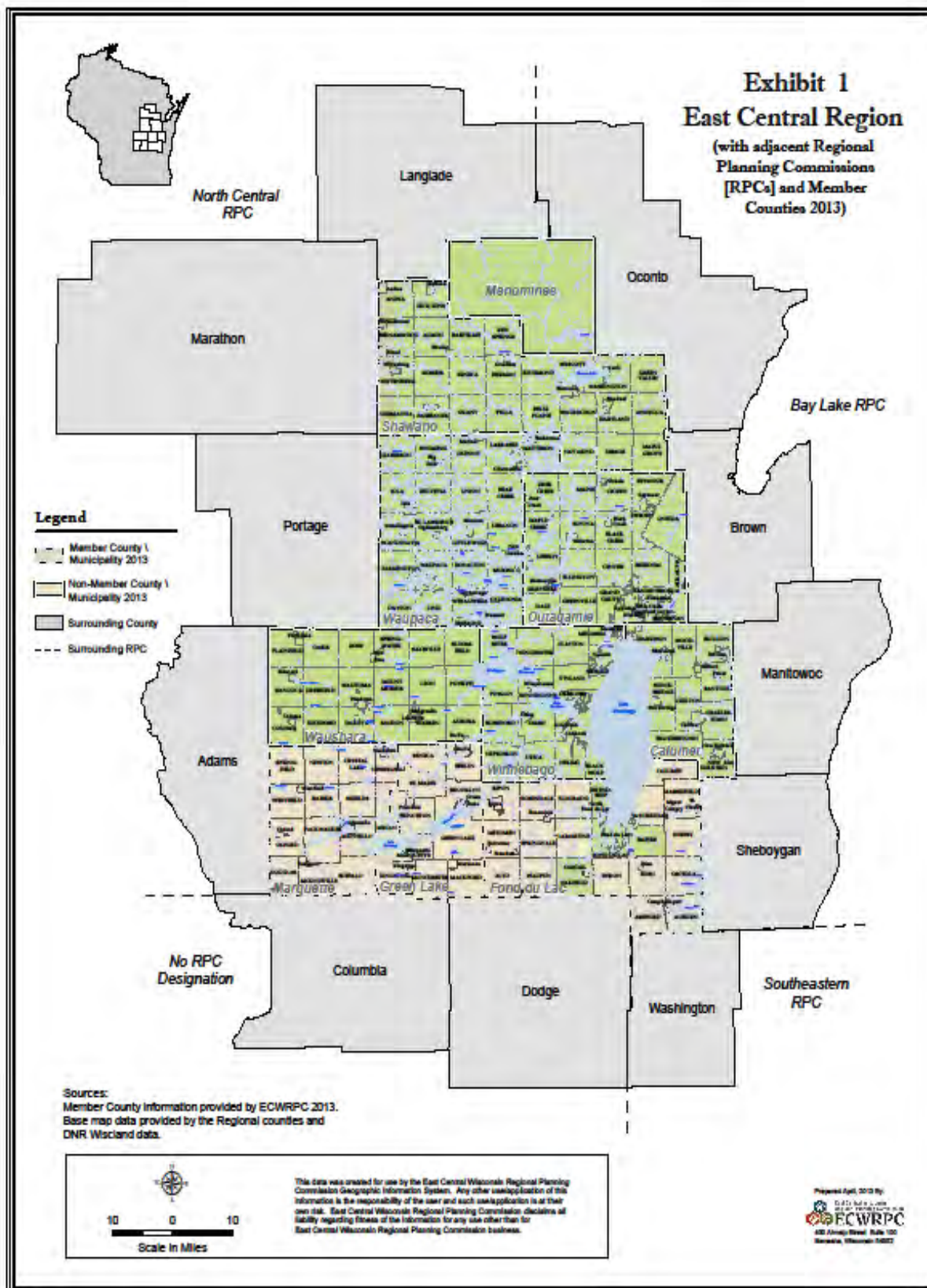
The East Central Wisconsin Regional Planning Commission (Exhibit 1) was created as a regional planning commission by Executive Order No. 41, issued by Governor Patrick J. Lucey and dated June 29, 1972. This action was taken following the submittal of petitions by the ten counties within the East Central region pursuant to SS. 66.945 (now SS. 66.0309), the existing regional planning enabling statute. The East Central RPC was preceded by two areawide planning agencies: the Fox Valley Council of Governments (FVCOG) which was formed in 1956 and was composed of fifteen governmental units in the Appleton-Neenah and Oshkosh urbanized areas, and the Northeastern Wisconsin Regional Planning Commission (NEWRPC) formed in 1962 and composed of nine counties encompassing the Wolf River Basin. With the issuance of the U.S. Department of Housing and Urban Development's (HUD) Areawide Planning Organization (APO) and Areawide Principal Jurisdiction (APJ) certification requirements in July 1970, these two agencies were dissolved and replaced by East Central which was roughly aligned with proposed uniform state administrative districts. The three northernmost counties of NEWRPC were dropped from the region and Calumet, Fond du Lac, Green Lake and Marquette counties were added on the south. Calumet and Fond du Lac counties had ongoing county planning programs prior to their affiliation with East Central.

The existence of different state agency configurations at the time various regional planning agencies were formed, coupled with the fact that the Governor did not adhere to the districting configuration when forming East Central, resulted in the significant overlapping of jurisdictions. In the past, the East Central region coordinated its planning program through memoranda of agreement with up to three criminal justice planning regions (now a statewide function), two health planning districts (now defunct), three manplanning districts (now four), two

area agencies on aging (now one), two rural conservation and development districts, two community action power programs (now three), one water quality management planning area (now defunct), the Wisconsin Rural Housing Cooperative and the State Clearinghouse. Additionally East Central coordinated with two regional transportation offices and one district natural resource office.

The basic rationale for the East Central Region as a geographic planning region is twofold. First, the Appleton MSA (Metropolitan Statistical Area) and Oshkosh-Neenah MSA are geographic units that can only be modified by the Federal Office of Management and Budget. These two areas have overlapping mandatory planning requirements for various federal funding programs above and beyond those for other areas. The initial Appleton and Oshkosh Metropolitan Planning Organizations (MPOs) were authorized by the Governor in December, 1973 while the City of Fond du Lac was designated an urbanized area effective May 2002 when the population exceeded 50,000 with the 2000 Census. The MPO designation was made by the Governor of Wisconsin in December 2002. Due to population growth in the Appleton MSA, this MPO received Transportation Management Agency (TMA) status in 2012 as a result of the 2010 Census results. The Fox Cities, Oshkosh and Fond du Lac urban areas thus serve as the focus for regional planning in this four county area along with the urban water quality focus of the Winnebago pool lakes and the lower Fox River.

To the west and the north, Green Lake, Marquette, Waushara, Waupaca, Shawano and Menominee counties share a common rural character while having a general orientation to the urban counties as trade and employment centers. When going to the extremes of the rural counties these ties fade and are shifted outside the region. The basic orientation for planning in the East Central region recognizes the diversity and commonality, and tailors program activities accordingly. This overall planning framework is consistent throughout the region.



Within the statutory provisions of SS. 66.0309 (previously SS. 66.945), East Central's main stated purpose is the "function and duty of making (preparing) and adopting a master (comprehensive) plan for the physical development of the region". This basic enabling statute is complemented by the comprehensive planning law (Smart Growth) SS. 66.1001 that specifies the content of the regional comprehensive plan.

Structure & Policy Making Process

The basic representation on the Commission's policy body consists of three commissioners from each county as follows:

1. The chairman of the county board serves on the Commission because of his or her elective office.
2. A second member is appointed by the county board. This individual must hold executive or legislative elective office within town, village, city or county governmental bodies within the appointing county. This member is automatically the county executive, if the county has one.
3. A third member is appointed by the Governor from a list of six persons nominated by the county board. At least four of these nominees must be private citizens.
4. Additional representatives are provided to counties with a population of 50,000 or greater, one for each attained increment of 50,000. The first additional representative is the mayor or council president of the largest city in the county, while subsequent additional members are appointed in a manner similar to the second member appointment procedures noted above.

Exhibit 2 contains a listing of East Central Commissioners for each county in 2012 and notes the manner of appointment as identified above. Exhibit 3 contains recent photographs of the Commissioners. The Commission has internally organized itself to facilitate broad involvement in its decision making process. Exhibit 4 contains a table of organization of

East Central's commission and standing committees, while Exhibit 5 provides a listing of staff. Appointments to standing committees are made by the Chairman annually and are confirmed by the Commission as follows:

- ◇ Steering Committee - The Steering Committee is comprised of seven members, one representative of each of the member counties. The function of the Steering Committee includes ensuring proper coordination and cooperation amongst the planning committees of the Commission and their respective citizens' or technical advisory committees. The Committee also has the power to act in emergency situations with the full power and authority of the Commission, keep the Commission advised of pending legislation affecting the Commission as well as its policies and programs, prepare annual work programs and budgets, approve local assistance contracts, conduct audit reviews, oversee the payment of bills and determine compensation rates, along with employment and salary determinations.
- ◇ Regional Comprehensive Plan Committee - This committee's primary role is to oversee the implementation and monitoring of the regional comprehensive plan. Other roles include intergovernmental cooperation and coordination matters, review functions to consider compliance with the regional plan, and other matters associated with land use.
- ◇ Transportation Committee - This committee directs and monitors the transportation program element and serves as a liaison with the Transportation Policy Advisory Committees and the Transportation Technical Advisory Committee. This committee is responsible for overseeing the transportation element of the regional plan.
- ◇ Community Facilities Committee - This committee reviews and recommends approval or denial of sewer service area plans and amendments, and oversees the community facilities element of the regional plan.
- ◇ Economic Development Committee - This committee directs and monitors the economic

development program element and serves as a liaison with the broader Economic Development Strategy Committee (see below). This standing committee has oversight of the economic and housing related elements of the regional plan.

- ◇ Open Space and Environmental Management Committee - This committee directs and monitors the open space, agriculture and environmental management program. It also has oversight of the related elements of the regional plan.

Rather than maintain Technical Advisory Committees (TACs) for each functional area, the Commission has TACs for the two principal areas of work activity: transportation and economic development. As studies are carried out in other areas, special project-based TACs are formed for the duration of the study. The Transportation Policy Advisory Committees for the Fox Cities (Appleton) Urbanized Area and the Oshkosh Urbanized Area exist to provide the monitoring and review necessary in the Transportation Improvement Program (TIP) and long range planning activities in the respective urbanized areas. A membership roster of all current advisory committees is provided in Appendix A. After adoption of a plan or policy recommendation by the Commission, ratification is sought from appropriate local units of government. To the maximum extent possible, Commission adoption and local ratification are coordinated.

The second TAC, known as the Economic Development Strategy Committee, is comprised of diverse representatives from both the public and private sectors of the region. Its main purpose is to advise and guide the EDA funded Comprehensive Economic Development Strategy, or CEDS, planning process. A listing of the TAC's membership for 2012-13 is contained in Appendix A. By seeking input and perspective from these diverse entities, the CEDS becomes a current and meaningful document for guiding the economic development activities for the betterment of the region as a whole.

Interagency Coordination

The Commission views its coordinating role as central to its reason for existence. Intergovernmental coordination is facilitated through the development of the *Annual Work Program & Budget*, specific requests for assistance by using formal memoranda of agreement relative to programs and review procedures, and active and meaningful participation on advisory committees. Several major examples of the Commission's work in the area of interagency coordination include:

To carry out federal water quality management planning requirements (Section 208 of P.L. 92500), it was necessary to form a new agency in the mid-seventies to meet the Environmental Protection Agency's (EPA's) urban industrial complex requirements for jurisdictional area and for one policy body. East Central and Brown County had jointly formed the Fox Valley Water Quality Planning Agency under SS. 66.30 in 1972 for such purpose. That agency was formally disbanded in December, 1989 principally because of inadequate funding resources and separate designation was sought by East Central. The Department of Natural Resources (WDNR) never acted on the request and reassumed the water quality planning responsibility at the state level. However, within the state Administrative Code for Water Quality Management, provisions are made whereby East Central is deemed the responsible agency for sewer service area delineation and administration under a memorandum of understanding with the WDNR. As a result, the Commission continues to play a strong role in the development and implementation of 25 separate Sewer Service Area (SSA) Plans throughout the region. Policies and procedures exist to update and amend these Sewer Service Area Plans on a routine basis.

The coordination of East Central's transportation planning activities with state and federal transportation planning and management efforts is accomplished in numerous ways. First, the Federal Highway Administration (FHWA), Federal Transit Administration (FTA), and Wisconsin Department of Transportation (WisDOT) have representatives on the Fox Cities and Oshkosh Area Transportation

Policy Advisory Committees. Second, WisDOT Bureau of Planning, as well as the WisDOT's regional offices have representatives on East Central's Transportation Technical Advisory Committee. Third, East Central staff participates in numerous committees and regional transportation planning sessions.

The coordination of East Central's transportation planning activities with local planning and management efforts is also accomplished in numerous ways. First, county highway commissioners, directors of public works, city traffic engineers, city and county planners, airport managers, among others, are members of the Transportation Technical Advisory Committee. Second, East Central staff members participate with local organizations such as the Appleton Parking and Transit Commission and county transportation coordinating committees. Each year, during preparation of East Central's Work Program, East Central staff solicits input from local planning staff on transportation-related planning activities that will be undertaken the following year.

Public Participation and Outreach

East Central is considered to be a governmental entity and falls under the same rules as counties or municipalities in terms of providing adequate public notice on all of its full quarterly Commission meetings and related Standing Committee meetings (Steering, Transportation, Open Space, Economic Development, Community Facilities, and Regional Comprehensive Plan). In addition to the required meeting postings and mailings to affected parties and media outlets, other efforts are made to notify and obtain public input on regional scale planning efforts from counties, communities and members of the citizen and business community. On a regular basis, the Commission develops and distributes information through the following methods:

- ◇ The Commission's website:
www.eastcentralrpc.org.
- ◇ The publication of the *Annual Report*.

- ◇ The publication of three newsletters (*The Rapport*) in January, July, and October of each year.
- ◇ Since 2011, the publication of regular e-newsletters for all of the Commission's work program areas was initiated. Sign-up forms for the e-newsletters can be accessed via the website by visiting: www.eastcentralrpc.org.
- ◇ Preparation of an *Annual Work Program and Budget* document.
- ◇ The development of periodic single or partial-day conferences (mini-conferences) and training sessions for local officials on current land use topics.

- 1 • Bay-Lake
- 2 • Capital Area
- 3 • East Central Wisconsin
- 4 • Mississippi River
- 5 • North Central Wisconsin
- 6 • Northwest
- 7 • Southeastern Wisconsin
- 8 • Southwestern Wisconsin
- 9 • West Central Wisconsin



Location of the nine Regional Planning Commissions within the State of Wisconsin.

Exhibit 2 – Roster of East Central Counties and Commissioners - May 1, 2012

Calumet County

1. Bill Barribeau, County Board Chair
2. Patrick Laughlin, County Board Supervisor
3. Merlin Gentz, Gubernatorial Appointee

Fond du Lac County

Withdrew from participation January 1, 1982. Individual community members exist, but no representation is provided on the Commission.

Green Lake County

Withdrew from participation January 1, 1975. No individual community members exist, and no representation is provided on the Commission.

Marquette County

Withdrew from participation January 1, 2002. No individual community members exist, and no representation is provided on the Commission.

Menominee County

1. Elizabeth Moses, County Board Chair (Perm. Alt.– Jeremy Johnson)
2. Robert Hermes, County Board Appointee
3. Ruth Winter, Gubernatorial Appointee

Outagamie County

1. Judy Schuette, County Board Chair (Perm. Alt. Peter Stueck, Vice Chair)
2. Thomas Nelson, County Executive
3. Timothy Hanna, Mayor, City of Appleton
4. Carl Anthony, County Board Supervisor
5. Kevin Sturn, County Board Supervisor
6. Paul Hirte, Gubernatorial Appointee

Shawano County

1. Jerry Erdmann, County Board Chair
2. Ken Capelle, County Board Supervisor
3. M. Eugene Zueske, Gubernatorial Appointee
4. Marshal Giese, Gubernatorial Appointee

Waupaca County

1. Dick Koeppen, County Board Chair
2. Brian Smith, Mayor, City of Waupaca
3. Garry Barrington, County Board Supervisor
4. DuWayne Federwitz, Gubernatorial Appointee

Waushara County

1. Donna Kalata, County Board Chair
2. Larry Timm, County Board Supervisor
3. Neal Strehlow, Gubernatorial Appointee

Winnebago County

1. David Albrecht, County Board Chairman
2. Mark Harris, County Executive
3. Burk Tower, Mayor, City of Oshkosh (Perm. Alt.—Mark Rohloff, City Mgr.)
4. Jim Erdmann, County Board Appointee
5. Ken Robl, County Board Supervisor
6. Ernie Bellin, Gubernatorial Appointee

<i>Total Number of Commissioners</i>	<i>28</i>
<i>Number Holding Elected Office</i>	<i>20</i>
<i>Number of County/Municipal Staff</i>	<i>1</i>
<i>Number of Citizen Representatives</i>	<i>7</i>

Exhibit 3 East Central RPC Commissioners, 2012-13



Bill Barribeau
Calumet County



Alice Connors*
Calumet County



Patrick Laughlin*
Calumet County



Merlin Gentz
Calumet County



Robert Hermes
Menominee County



Jeremy Johnson
Menominee County



Ruth Winter
Menominee County



Tom Nelson
Outagamie County



Judy Schuette*
Outagamie County



Peter Stueck, Aft.*
Outagamie County



Helen Nagler*
Outagamie County



Timothy Hanna
Outagamie County



Paul Hirtle
Outagamie County



Bob Weyneberg*
Outagamie County



Kevin Sturn*
Outagamie County



Ken Capelle
Shawano County



Jerry Erdmann
Shawano County



M. Eugene Zeuske*
Shawano County



Marshal Giese*
Shawano County

Commissioners Continued



Dick Koeppen
Waupaca County



Brian Smith
Waupaca County



Duane Brown*
Waupaca County



Gary Barrington*
Waupaca County



DuWayne Federwitz
Waupaca County



Donna Kalata*
Waushara County



Norm Weiss*
Waushara County



Neal Strehlow
Waushara County



Larry Timm
Waushara County



Mark Harris
Winnebago County



David Albrecht
Winnebago County



Ernie Bellin
Winnebago County



Jim Erdman
Winnebago County



Ken Robl
Winnebago County



Mark Rohloff, AIT
Winnebago County

NOT PICTURED:

Elizabeth Moses
Menominee County

Carl Anthony
Outagamie County

Burk Tower
Winnebago County

* Served portion of 2011

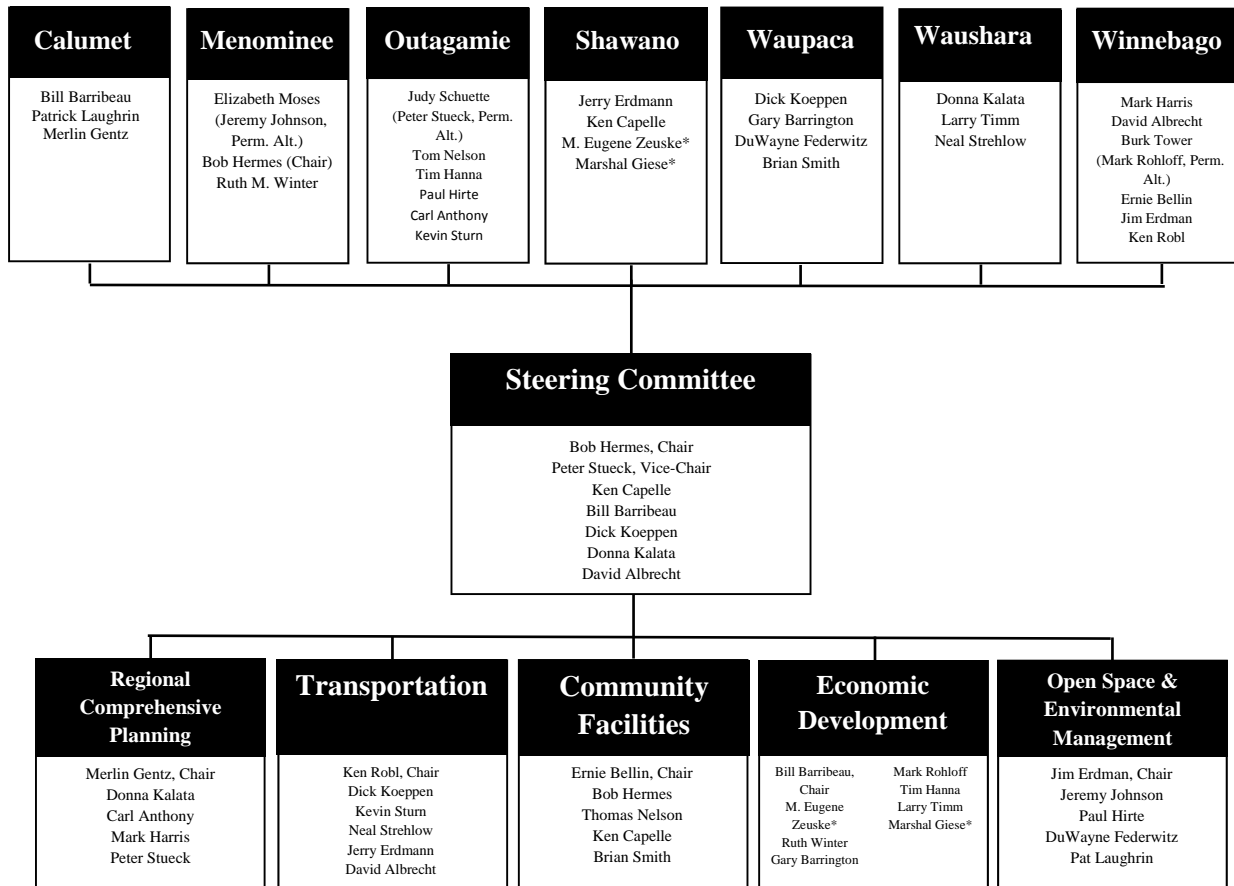


Eric Fowle
Executive Director/
Secretary/Treasurer



Walt Raith
Assistant Director/
MPO Director

Exhibit 4—Table of Organization, 2012-13 East Central Commissioners



* Portion of 2012

Exhibit 5 – East Central RPC Staffing, 2012

Administrative Staff

Eric W. Fowle, AICP, Executive Director
Walt Raith, Assistant Director / MPO Director
Vicky Johnson, Administrative Coordinator
Edalia Haney, Administrative Assistant
Pamela Scheibe-Johnson, Controller

Planning Staff

Jason Kakatsch, Principal Transportation Planner
Kathy Thunes, P.E., Principal Community Development Planner
David Moesch, Associate Transportation Planner
Scott Konkle, Mine Reclamation Specialist
Melissa Kraemer Badtke, Associate Planner SRTS
Todd Verboomen, Sewer Service Area Planner
Joe Huffman, Sewer Service Area Planner

Tom Baron, Community Development Planner
Nick Musson, Transportation Planner
Katherine Ahlquist, Economic Development Planner
Mike Patza, SRTS Planner
David Kress, SRTS Planner

Geographic Information Systems Staff

Trish Nau, GIS Coordinator
Mike Zuege, GIS Specialist II
Adam Pfefferle, GIS Specialist I

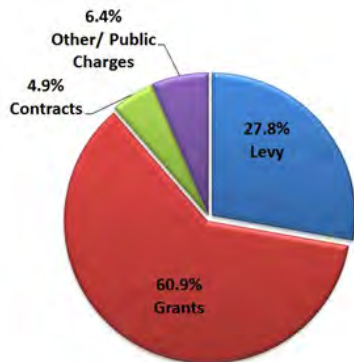
Information Technology Staff

Tim Badtke, IT Coordinator

Summary of Budget and Cost-Sharing

Based on the audit for 2012, the East Central Wisconsin Regional Planning Commission had total operating revenues of \$2,123,818. Of this amount, \$697,910 (32.9%) was derived from a direct tax levy to its seven member counties. The levy is based on the assessed equalized valuation of each county. An additional \$1,185,625 (55.8%) was received from various state and federal entities as cost-shared grants for specific program work. The remaining revenues were derived throughout the calendar year in the form of local contracts, small local grants, or miscellaneous revenues. Exhibit 6 illustrates the proportion of revenues from the 2012 budget year, while Exhibit 7 provides a recent history of the comparison between the total annual budget and the counties' proportionate levies. Exhibit 8 contains detailed information on each county's respective portion of the 2012 levy.

Exhibit 6 – East Central RPC Revenue Sources, 2012



State and federal funded programs include the transportation planning from FHWA, FTA and WisDOT, the economic development program from EDA, and the sewer service area program from the WDNR. Portions of the local levy are committed as matching funds and are allocated among each work element on the basis of: 1) the relative benefits to be derived by each funding agency's program; 2) the grant program's eligibility requirements; and 3) federal and state cost sharing formulas.

Levy revenues are determined by the Commission on an annual basis and for 2012, in response to continued county-level budget constraints, the levy was decreased by 5.53% from 2011 levels. Over the

long term, when compared to staffing and budget needs of the Commission, an ever-widening gap continues to form within its budget (Exhibit 7). This gap is typically filled with local contract work.

Exhibit 7 – East Central Budget/Levy History

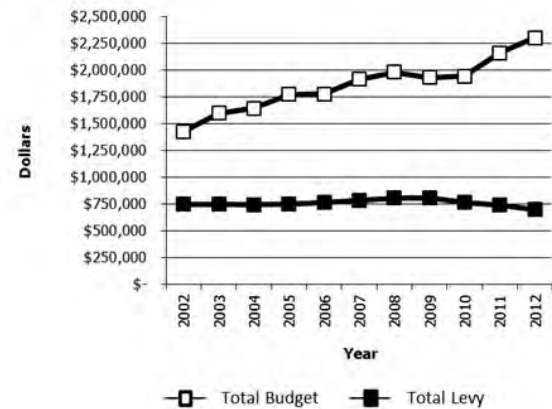


Exhibit 8 – East Central RPC 2012 Levy Distribution

Participating County / Municipality	2012 Tax Levy (Rate = 0.000016977)
CALUMET CO.	\$54,253
FOND DU LAC CO.	County not a member
C. of Fond du Lac	\$45,367
V. of Eden	\$789
V. of North FdL	\$3,087
T. of Empire	\$4,905
T. of Fond du Lac	\$4,784
T. of Friendship	\$2,797
T. of Oakfield	\$943
GREEN LAKE CO.	County not a member
MARQUETTE CO.	County not a member
MENOMINEE CO.	\$5,392
OUTAGAMIE CO.	\$224,905
SHAWANO CO.	\$49,766
WAUPACA CO.	\$64,109
WAUSHARA CO.	\$42,600
WINNEBAGO CO.	\$194,212
TOTAL LEVY	\$697,910

Notes

- The 2012 Tax Levy was calculated on 2009 Equalized Valuation.

- The maximum levy is established by Wis. State Statutes at .003 percent.

Description of the Region

Physical Characteristics

The East Central region consists of 10 counties: Calumet, Fond du Lac, Green Lake, Marquette, Menominee, Outagamie, Shawano, Waupaca, Waushara and Winnebago, and three reservations: Menominee, Stockbridge-Munsee and a portion of the Oneida reservation (refer to Exhibit 1). The region encompasses 5,900 square miles and is rich in natural, cultural and agricultural resources. These resources have contributed significantly to the development of the region and are necessary components of the region's economic base and its quality of life.

Approximately 30% of the region is covered in woodland or forest and 50% is in agricultural use. The remaining 20% is either developed or in some other type of use. Abundant water resources such as the Fox and Wolf Rivers, Lake Winnebago, the Horicon Marsh and numerous other streams, rivers, lakes and wetlands exist within the region. Physiographic features such as the Niagara Escarpment and a variety of glacial features such as drumlins, moraines, outwash plains and kettle lakes contribute to a varied landscape. The region contains 91,000 acres of state wildlife and fishery lands, two state parks, over 1,000 miles of trout streams, conservancy areas such as Rush Lake, and many county and local parks and recreation trails. A variety of local museums, historical sites, theaters, restaurants, sporting venues and other amenities also contribute to the region's quality of life.

Historical Development

The waterways in the region formed the first major transportation routes as French fur traders and missionaries began interacting with Native Americans living along the Fox River as early as 1634. As trade increased, more European immigrants moved into the area settling on or near the Fox River.

By 1845, eight communities in the East Central region were incorporated as cities or villages. Five of those communities: Fond du Lac, Neenah, Oshkosh, Stockbridge and Waupun are in existence today. The other three communities: Ceresco, Grand Chute and Taycheedah were incorporated into other communities. Although barge traffic on the Fox River served past transportation needs, these water-ways are now primarily used for recreation and tourism. Most of today's traffic and freight moves along an extensive road network that ranges in size from well-maintained local roads to major transportation corridors such as USH 41, USH 10, STH 29 and STH 21. Significant freight rail infrastructure also exists throughout the region, including the mainline CN rail corridor. While the region currently has no passenger rail service, it does contain two regional airports: Outagamie County Regional Airport and Wittman Regional Airport, along with a number of smaller airports.

Population Characteristics

In 2010, the region's 651,835 residents comprised 11.5 percent of Wisconsin's population. Three-quarters of the region's population is concentrated in the four urban counties (Calumet, Fond du Lac, Outagamie and Winnebago). Exhibit 9 contains historic and projected populations for the region and its counties. Calumet and Outagamie comprise the Appleton MSA, Winnebago County comprises the Oshkosh-Neenah MSA, and Fond du Lac is an independent urban center located along Lake Winnebago south of Oshkosh. This area, known as the Fox Valley, is a major manufacturing center for Wisconsin and the Midwest, focusing on paper products and machine manufacturing. The local healthcare industry is growing in size and importance.

The outlying portions of the four urban counties surrounding Lake Winnebago are more rural in character and contain some of the region's best

farmland. The six rural counties to the north and west: Menominee, Shawano, Waupaca, Waushara, Marquette and Green Lake, contain many lakes and forested areas providing recreational and tourism activities. Waupaca and Winnebago counties have a number of heavy truck vehicle body and part manufacturing firms such as Pierce and Oshkosh Truck. Agriculture, mining, and the lumber and forest products sectors also contribute to the economic base of the region. In 2010, the two largest cities outside of the urban area include the City of Waupun (pop. 11,340), located in southern Fond du Lac County and the City of Shawano (pop. 9,305) in Shawano County.

Although the population is growing increasingly diverse, Caucasians continue to comprise the overwhelming majority of the population for all counties, with the exception of Menominee County. The Menominee Reservation boundary encompasses the entire Menominee County/Town jurisdiction, and Caucasians accounted for less than 11% of the population in 2010. Over 87% of Menominee's population identified as Native American. Region-wide, Caucasians comprised 92.4% of the population in 2010. The Hispanic demographic, the fastest growing ethnic population in the United States, comprised 3.5% of the region's population in 2010. This tends to be a relatively young population. As a result, over time, Hispanics are expected to constitute a larger share of the labor force.

The region's population is also aging consistent with national trends. For example, the median age for Menominee County, which has traditionally had a younger population than the remainder of the region, was 28 years in 2008. The median age per county for the other nine counties in the region ranged from 37.1 years in Calumet County to 43.9 years in Marquette County. As a whole, the median age for the East Central Wisconsin Region was 38.7. Six percent of the region's population was under five years of age in 2008. Nineteen percent of the region's population was of school age. Sixty percent of the population was working age, while the remaining 14% was age 65 or older. This age distribution currently provides the region with a significant workforce.

Source: Population, Race and Ethnicity: 2010 Census Redistricting File. Age: 2008 Census Population Estimate Program

Workforce & Unemployment

Between 2000 and 2010, the civilian labor force increased from 345,573 persons to 356,831 persons. The number of employed persons decreased from 334,948 to 328,037 during this same time period. Economic restructuring and the "Great Recession" has meant that the number of unemployed persons and the unemployment rate has risen as well. In 2000, the region's unemployment rate (not seasonally adjusted) was 3.1%. Due to the overall economic turndown throughout the U.S., the region's unemployment rate rose to 8.1% in 2010 (a decrease from 8.5% in 2009). While this rate was less than that of the national unemployment rate average of 9.9%, it was slightly less than the state rate of 8.3%.

Source: Wisconsin Department of Workforce Development, LAUS

Wages & Income

Wages and income within the region have stagnated, as the average weekly wage for all industries in the region increased from \$494 in 2000 to \$714 in 2008, and has since declined to \$644 in 2011. Average per capita income for the region rose from \$27,074 in 2000 to \$35,160 in 2011 (most recent data available). However, wages vary substantially across different sectors. 2011 North American Industry Classification System (NAICS) wage information indicated that average weekly wages ranged from \$849 in the manufacturing super sector to \$236 in the leisure and hospitality super sector.

Sources: Wisconsin Department of Workforce Development ES202; Bureau of Workforce Training - Labor Market Information.

Exhibit 9 - Historic and Projected Population of the East Central Region

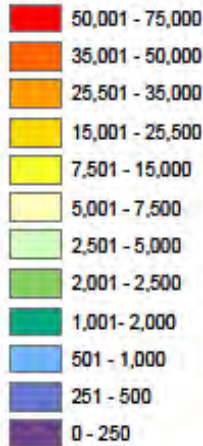
Geographic Area	Source	Census 2000	DOA 2005	Census 2010	2015	2020	2025	2030
Wisconsin*	DOA	5,363,715	5,580,757	5,686,986	5,931,386	6,110,878	6,274,867	6,415,923
Region*	ECWRPC	609,558	638,699	651,835	691,308	714,939	737,521	756,877
Urban Counties	ECWRPC	455,781	479,272	494,293	522,191	542,867	562,993	581,444
Rural Counties	ECWRPC	153,777	159,427	157,542	169,117	172,072	174,528	175,433
Calumet	ECWRPC	40,631	45,168	48,971	52,239	55,445	58,414	61,141
Fond du Lac	ECWRPC	97,296	100,180	101,633	106,140	108,867	111,128	112,925
Green Lake	ECWRPC	19,105	19,375	19,051	20,032	20,184	20,152	19,996
Marquette*	ECWRPC	14,555	15,138	15,404	16,239	16,501	16,794	16,928
Menominee	ECWRPC	4,562	4,616	4,232	5,090	5,247	5,290	5,243
Outagamie*	ECWRPC	161,091	170,680	176,695	190,570	200,012	208,688	216,874
Shawano	ECWRPC	40,664	42,029	41,949	44,738	45,733	46,687	47,320
Waupaca*	ECWRPC	51,825	53,351	52,410	55,993	56,888	57,678	57,894
Waushara*	ECWRPC	23,066	24,918	24,496	27,024	27,518	27,925	28,051
Winnebago	ECWRPC	156,763	163,244	166,994	173,241	178,543	184,763	190,504

* 2000 population adjusted through the Census CQR program.

Source: U. S. Census, 2000 and 2010; DOA, 2005; ECWRPC 2004.

Map Features

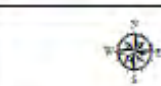
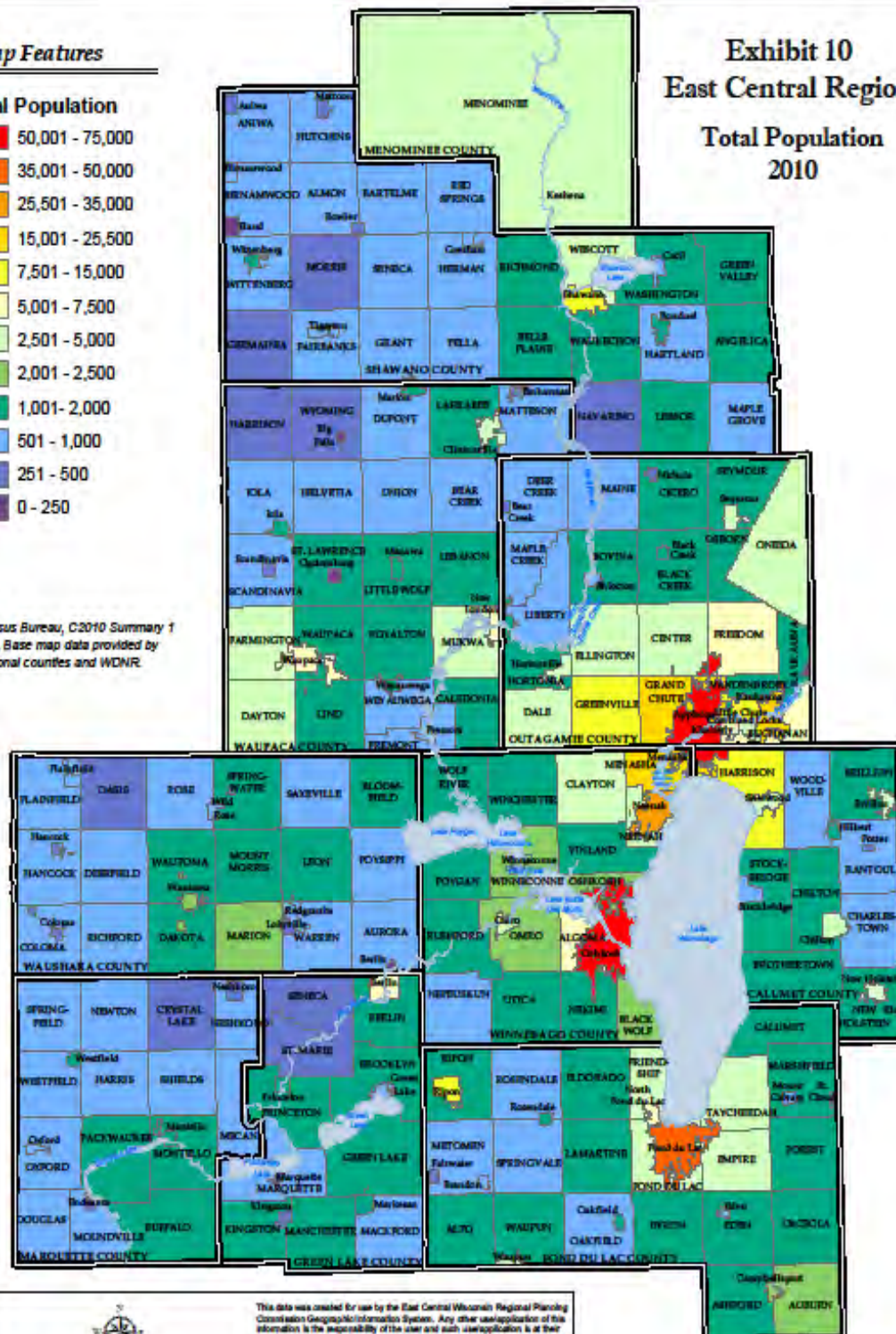
Total Population



Sources:

U.S. Census Bureau, C2010 Summary 1 Data File, Base map data provided by the Regional counties and WDNR.

Exhibit 10 East Central Region Total Population 2010



This data was created for use by the East Central Wisconsin Regional Planning Commission Geographic Information System. Any other use/application of this information is the responsibility of the user and such use/application is at their own risk. East Central Wisconsin Regional Planning Commission disclaims liability regarding fitness of the information for any use other than for East Central Wisconsin Regional Planning Commission business.

Features on map are approximate locations and are to be used for reference purposes only.

Prepared April, 2013 by
ECWRPC
 420 Alameda Street, Suite 100
 Marinette, Wisconsin 54857

Regional Comprehensive Planning Program

Regional Comprehensive Plan

In the fall of 1999, new statewide comprehensive planning requirements were signed into law as a part of the Governor's budget bill. SS 66.1001 requires that, starting in 2010, land use decisions must be based on an adopted comprehensive plan as defined in the law. This applies to any and all levels of government within the State of Wisconsin that wish to exercise any land use regulatory powers. The legislation also requires the development of a regional plan by regional planning commissions throughout the state. The 'smart growth' legislation, as it has come to be known, requires the development of a nine element comprehensive plan. Those nine elements are:

1. Issues and Opportunities
2. Housing
3. Transportation
4. Utilities and Community Facilities
5. Agricultural, Natural, and Cultural Resources
6. Economic Development
7. Land Use
8. Intergovernmental Cooperation
9. Plan Implementation

While the Commission had previously adopted a regional planning approach (developed in the 1970s), recent smart growth legislation establishes new comprehensive planning standards which required staff to undertake a major plan update to address the full ten county region. The primary objective of the regional comprehensive plan is the production of a well-integrated goal and action-oriented policy framework that will help to promote good local land use related decisions and thereby cumulatively address the regional issues which exist now or in the future.

Working together with citizens, local governments, and interest groups, the Commission began this process in 2001 with the award of a Wisconsin Department of Administration (WDOA) 'Smart

Growth' Planning Grant for \$175,000. As part of this process, seventeen separate Technical Advisory Committees (TACs) were formed to represent the numerous elements and sub-elements found in the comprehensive planning legislation. The TACs were consulted throughout the second part of the process and helped to effectively bridge the gap between the established visions and the specific strategies which are needed to ultimately achieve them.

The Commission approved its *Year 2030 Regional Comprehensive Plan* on April 25th, 2008 after consulting the public through widespread notices and promotional efforts, including the hosting of four separate public informational meetings throughout the region. The resulting products were developed and produced through the planning process and are available for public review by contacting the Commission or viewing its website (www.eastcentralrpc.org):

- ◇ *Milestone Report #1: The State of the Region:* The first technical report, adopted in April 2003, provides background information for the nine comprehensive planning elements. Descriptive text, tables, charts and numerous maps.
- ◇ *Milestone Report #2: Issues/Opportunities and Visioning:* Adopted by the Commission in July 2004, this report contains thematic vision statements for each of the planning elements, a clarification of issues and opportunities present in the region, and the identification of differences between the envisioned future and the current state of the region as reported in Milestone Report #1. This second report also includes preliminary goals for each element which were developed as a result of consulting the aforementioned 17 Technical Advisory Committees.
- ◇ *Milestone #3: Goals, Strategies, and a Plan for Action:* In 2004, work slowly began on the third report and was delayed significantly by numerous, unexpected staffing changes. This report was completed in early 2008 and contains

detailed strategies and recommendations based on the original work of the TACs. A Regional Framework Map (inside front cover), Transportation Recommendations Map (inside back cover), and dozens of supporting Regionally Significant Features Maps were also produced to effectively portray the plan's visions and recommendations. Lastly, the report addresses overall plan implementation and monitoring.

By conducting and completing the regional planning process, East Central now has a firm handle on the issues and concerns that must be addressed through regional-level solutions. The plan lends itself as a framework of goals for which to achieve through the implementation of the plan's several hundred specific recommendations. The Commission's short term implementation goals revolve around improving awareness of the plan amongst its regional constituents, as well as the development of a monitoring and reporting program. Other individual projects were initiated during the next several years in an effort to implement specific areas of the overall plan.

Regional Projects & Activities:

After the adoption of its Comprehensive Plan in 2008, the Commission spent time in 2012 to promote comprehensive planning and build awareness about the regional plan in the following ways:

- ◇ Staff submitted a letter to the Legislature opposing Assembly Bill 303 (Comprehensive Planning) as directed by the Commission.
- ◇ Staff attended meetings and conducted presentations or shared information with the following groups to further the implementation of the plan as well as to gather additional input:
 - ◆ The Hispanic Interagency Council;
 - ◆ The Hmong American Partnership.
- ◇ Commission staff also participated in other activities related to smart growth planning including keeping its staff informed about current issues and networking with colleagues to learn new ideas. These included attendance at various conferences and seminars during 2012:
 - ◆ NE Wisconsin Wilderness Alliance conference focused on climate change;
 - ◆ Capital Area RPC Regional Sustainable Communities;
 - ◆ Wisconsin Chapter of the American Planning Association Conference; and
 - ◆ National American Planning Association Conference.
- ◇ Commission staff also continued to monitor progress on the implementation of the Regional Plan's strategies and recommendations. A framework for reporting progress continued to be developed during 2012.
- ◇ Staff participated in updates from the Department of Housing and Urban Development - Office of Sustainable Housing and Communities to keep informed about opportunities for regional collaboration and planning. The regional planning grant qualified the East Central counties of *Calumet*, *Outagamie* and *Winnebago*, for the Preferred Sustainability Status in both HUD FY2012 and FY2013. This status allowed the Commission to support local organizations by providing two bonus points on grant application to three organizations during 2012 and the first quarter of 2013.
- ◇ Staff continued to work on preparing a Public Participation Plan that will be required as part of the Regional Plan Amendment Process.
- ◇ Staff continued to work with stakeholders to discuss and develop opportunities to create a program area regarding community 'livability'.
- ◇ Staff hosted and participated in quarterly meetings of the Sustainable Communities Network. The partnership includes *Outagamie County*, cities of Oshkosh, Neenah and Menasha and the towns of Greenville and Menasha.
- ◇ Staff participated in webinars and other educational opportunities to promote sustainability in the region:

- ◆ “Getting to Yes: Negotiating Agreement without Giving In”, a book discussion;
 - ◆ Partnership for Sustainable Communities Teleconference;
 - ◆ American Community Survey Workshop;
 - ◆ *Greenfire, the Aldo Leopold Story*, a movie;
 - ◆ “Everyone Remain Calm: Effective Strategies for Engaging Your Community on Sustainability”, a webinar on communication strategies; and
 - ◆ “Sustainability Methods and Trends”, a webinar.
- ◇ Staff updated zoning and comprehensive planning information for East Central counties, cities, villages and towns as requested by the Wisconsin Department of Administration.
 - ◇ Staff attended a meeting of the *Outagamie County* Sustainability Committee to learn more about Lean.
 - ◇ Staff developed and hosted a mini-conference on Diversity in Planning.

Local Assistance Projects & Activities:

By 2010, each community and county within the region was required to have a ‘smart growth’ comprehensive plan adopted per Wis. Stats. 66.1001. Over the years, the region’s local units of government have, for the most part, complied with this State mandate for planning. The Commission has and continues to have a role in this important program and conducted activities as follows during 2012:

- ◇ Staff continued to meet with the Town of Clayton (*Winnebago County*) to discuss future municipal service and land use planning issues in a regional context.
- ◇ The Commission assisted the Village of Kimberly (*Outagamie County*) with a Comprehensive Plan amendment for the

western portion of the New Page/Kimberly Mill site.

- ◇ The Commission provided ordinance review services to the Town of Hartland (*Shawano County*) regarding a draft temporary development/zoning moratorium.
- ◇ The Commission assisted the Town of Caledonia (*Waupaca County*) on an ordinance codification project.

Village of Kimberly, Wisconsin

**Former NewPage Mill Property Redevelopment Strategy:
Public Workshop Summaries, Results, and Recommendations**
August/September, 2012
Report Date: November 12, 2012



Prepared by the East Central Wisconsin Regional Planning Commission

*“Former NewPage Mill Property Redevelopment Strategy”
prepared by ECWRPC, November 2012.*

Community Facilities Planning Program

Sewer Service Area (SSA) Management

Regional Significance: The Commission administers the State's NR-121 Sewer Service Area Planning program under a memorandum of agreement and contract with the Wisconsin Department of Natural Resources (WDNR). The Commission staff and Community Facilities Committee serve as review entities for, and advisors to, the WDNR for the development of twenty-six separate SSA Plans and subsequently requested SSA boundary amendments. The Commission also conducts plan conformance reviews on certain activities related to wastewater treatment and sewer infrastructure planning and construction.

Regional Projects and Activities:

- ◇ Staff submitted the following Sewer Service Area Plan updates to the Wisconsin Department of Natural Resources for certification:
 - ◆ Poygan SSA Plan Update (**Winnebago and Waushara Counties**). Certification pending.
 - ◆ Embarrass/Cloverleaf SSA Plan (**Shawano and Waupaca Counties**). Certified March 15, 2013.
 - ◆ 2030 Freedom Sewer Service Area Plan (**Outagamie County**). Certified January 25, 2012.
- ◇ Staff completed the review of, and prepared comments on, the draft *Village of Sherwood (Calumet County) Firelane 12/13 Sewer Service Study*.
- ◇ Staff prepared materials and SSA current conditions data for the 2030 *Brillion Sewer Service Area Plan*. Kick-off meetings were scheduled for the City of Brillion, Town of Rantoul and the Town of Brillion, (**Calumet County**).



Algoma Sanitary District No. 1 Administration Building.

- ◇ Staff prepared mapping and current conditions data for a kick-off meeting for the 2030 *Fond du Lac Sewer Service Area Plan* update (**Fond du Lac County**).
- ◇ Staff updated the sanitary district boundary data for the Waverly Sanitary District, Darboy Sanitary District and the Forest Junction Sanitary District (**Calumet County**).
- ◇ Staff met with the Sherwood Village Council to initiate the 2030 *Sherwood Sewer Service Area Plan* update in a question and answer forum (**Calumet County**).

Local Assistance Projects and Activities:

- ◇ Staff continued to meet with officials from the Town of Clayton (**Winnebago County**) to discuss ongoing sewer service and utility issues within the Town.
- ◇ Staff worked with the following communities and sanitary districts during the course of 2012

on potential, or processed, Sewer Service Area Plan amendments, documents and GIS related activities:

- ◆ Assisted the Town of Greenville and Hortonville School District (*Outagamie County*) on potential issues and needs to seek an SSA amendment to the Grand Chute Menasha West SSA Plan for the construction of a future school facility.
- ◆ Staff filled a GIS data request for the Omro and Silver Lake Sanitary Districts (*Winnebago and Waushara Counties*) for use in a redistricting project.
- ◆ Staff reviewed a copy of the draft boundary agreement between the City of Kaukauna (*Outagamie County*) and Town of Harrison (*Calumet County*).
- ◆ Staff communicated with the City of Omro regarding a potential sanitary district consolidation effort being brought by the Town of Algoma and



James Road Area Detention Basin, Oshkosh.

Town of Omro Sanitary Districts (*Winnebago County*).

- ◆ Staff met with the Town of Algoma Sanitary District to discuss the eventual consolidation with the Omro Sanitary District. Support documentation was also reviewed (*Winnebago County*).
- ◆ Staff filled a data request for the *Calumet County* Resource Management Department supplying sanitary district contact information (*Calumet County*).
- ◆ Staff provided sanitary district location and contact information for use in a Lake Management Directory project (*Region-wide*).
- ◆ Staff initiated Phase II of the Groundwater Recharge Project collecting existing land use, soil conditions, current hydrography and updated street patterns (*Shawano, Waushara, Waupaca and Menominee Counties*).
- ◆ Staff completed the 2012 Water Quality Management Application submittal to the Wisconsin Department of Natural Resources contracting for three sewer service area plan updates (*Fond du Lac and Calumet Counties*).
- ◇ Staff conducted advisory reviews of sanitary sewer extensions, laterals and sewer related planning including comprehensive plan amendments for the following entities:
 - ◆ 12 SSA related projects (*Outagamie County*)
 - ◆ 5 SSA related projects (*Calumet County*)
 - ◆ 5 SSA related projects (*Winnebago County*)
 - ◆ 2 SSA related projects (*Waupaca County*)
 - ◆ 2 SSA related projects (*Fond du Lac County*)

- ◆ 1 SSA related projects (*Shawano County*)

Community and Public Facilities

Regional Significance: The viability of the region, in terms of economics and quality of life, is dependent on a highly developed infrastructure of basic community and public facilities. Existing and new development requires municipal services that are often administered at a regional scale, including: the efficient removal and permanent storage of waste and recyclables, a dependable supply and efficient transmission of natural gas and electric, a fast reliable telecommunications network that employs the latest technology, a reliable system that quickly responds to fire, police and other emergency situations and an accessible and affordable healthcare system.

Regional Projects and Activities:

- ◇ Staff attended meetings of the Fox River Valley Branch of the American Society of Civil Engineers (ASCE) and the Section Board as well as the Spring Technical Conference. Staff chaired the History and Heritage Committee for the Wisconsin Section. As part of this responsibility, staff assisted the Section in preparing an application to nominate the Fox River Navigational System for a National Engineering Landmark. Staff participated in the planning committee for the 2013 Spring Technical Conference that was developed to highlight the 90th Anniversary of the presence of the ASCE in the State of Wisconsin.
- ◇ The Commission monitored solid waste and recycling legislation through membership with the Associated Recyclers of Wisconsin (AROW). As part of this membership, staff participated in the quarterly meetings of the Organics Subcommittee.
- ◇ Staff participated in monthly meetings of ECOS-FV, a group of local citizens, businesses and government that meets in the City of Menasha Public Library and promotes sustainability throughout the greater Fox Cities

area (*Calumet, Outagamie and Winnebago Counties*). As part of this membership:

- ◆ Staff organized an Earth Week Community Partnership to jointly coordinate and promote Earth Week Activities.
- ◆ Staff assisted in developing a website that could be used by local sustainability organizations and the Sustainable Communities Network.
- ◆ Staff assisted in developing a sustainability video series that ECOS-FV is developing through partnership with the Town of Menasha Sustainability Committee and through the support of SCA Tissue (*Winnebago County*). As part of this effort, staff worked with the Solid & Hazardous Waste Education Center to coordinate the development of a composting video.
- ◇ Staff participated in the Tri-County Clean Sweep event (*Calumet, Outagamie and Winnebago Counties*).
- ◇ Staff chaired the Energy/Compost and Job Production Committee through Food Waste



City of Menasha E-Recycling Event, April 2012.

Taskforce. The taskforce was formed to determine if interest in the Fox Cities and Waupaca area existed to divert food (pre and post) from area landfills. The taskforce meets quarterly to discuss food waste issues in the area (*Calumet, Outagamie, Waupaca and Winnebago Counties*).

- ◇ Staff participated in quarterly meetings of the Sustainable Communities Partnership. A group that includes membership by the governmental sustainability boards and committees including: the City of Menasha Sustainability Board, the City of Neenah Sustainability Committee, the Town of Menasha Sustainability Committee, the Oshkosh Sustainability Advisory Board, Sustainability Taskforce for *Outagamie County* and Sustainable Greenville (*Outagamie and Winnebago Counties*).
- ◇ Staff attended the American Transmission Company's (ATC) Open House in Green Bay to evaluate potential corridors for electric transmission lines in *Outagamie* and *Shawano Counties*.
- ◇ Staff prepared bi-monthly e-newsletters for the Community Facilities element.
- ◇ Staff attended the following as part of involvement in energy and sustainability planning:
 - ◆ Webinar from the EPA's Office of Sustainable Communities on free technical assistance that will be available to communities through the EPA Building Blocks for Sustainable Communities Program.

Local Assistance Projects/Activities:

- ◇ Staff participated in a City of Menasha (*Winnebago County*) E-Recycling event at the City of Menasha Utilities facility.
- ◇ Staff compiled an e-blast announcing an upcoming energy tour in Fond du Lac County (*Fond du Lac County*).

- ◇ Staff attended the 100th Anniversary Celebration for Kaukauna Utilities (*Outagamie County*).



Kaukauna Utilities 100th Anniversary, 2012.

Exhibit 11 Sanitary Districts & Water Quality Management Planning East Central Region

Map Features

SEWER SERVICE PLANNING*

- Sanitary Districts with 2018 SSA Plans
- Sanitary Districts without 2018 SSA Plans

County Boundary

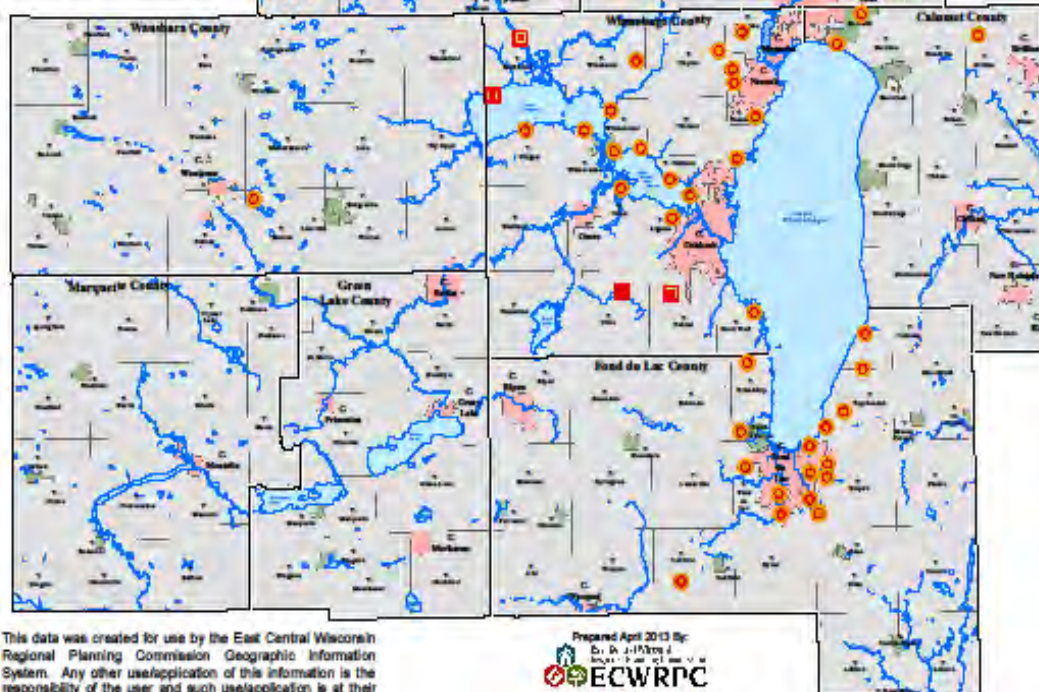
MINOR CIVIL DIVISIONS

- City Corporate Limits
- Village Corporate Limits
- Townships

* Green Lake and Marquette Counties excluded



Sources:
Data provided by ECWRPC and
regional counties.



This data was created for use by the East Central Wisconsin Regional Planning Commission Geographic Information System. Any other use/application of this information is the responsibility of the user and such use/application is at their own risk. East Central Wisconsin Regional Planning Commission disclaims all liability regarding these of the

Prepared April 2013 By:
Donna J. Johnson
ECWRPC
400 Adams Street, Suite 100
Menasha, WI 54952

Transportation Planning Program

Regional Highway Corridor Planning

Regional Significance: East Central's primary role in highway corridor studies is to provide a multi-jurisdictional forum for stakeholders and promote coordination and cooperation between state and federal agencies, local units of government and the public. This includes public involvement and informational meeting activities and the creation of local advisory committees. The goal is to ensure that everyone that may be impacted by, or is interested in, the project is notified and that the opportunity to become involved and provide input and comment is available.

Regional Projects & Activities:

- ◇ Staff continues to work with the WisDOT and their consultant to maintain and update the Northeast Regional Travel Demand Model. The NE Region Model includes the entire USH 41 corridor from Green Bay through Fond du Lac and includes most of the WisDOT Northeast Region counties. The model enhances the ability to forecast travel demand and evaluate impacts of land use on major highway facilities within **Calumet, Fond du Lac, Outagamie, Shawano, Waupaca, and Winnebago Counties**.
- ◇ Staff worked with the WisDOT Central Office and UW-Madison TOPS lab to evaluate their crash data mapping web application and provide feedback.
- ◇ Staff put together a tutorial for downloading crash data from UW-Madison Traffic Operations and Safety Laboratory (UW-Madison TOPS) lab crash data mapping web application.
- ◇ East Central serves on the USH 151 Advisory Committee and work continues to identify safety improvements and access locations for the long term conversion of USH 151 through Fond du Lac to Waupun. (*Fond du Lac County*). The preferred alternative for the highway has now been selected and work will continue with local governments to plan for safe local road connections and access points.
- ◇ Staff attended a US 10 Corridor Study Local Officials Meeting to review possible alternatives for sections of the roadway along Oneida Street and WIS 114 in **Winnebago and Calumet Counties**.
- ◇ Staff continued work with the WisDOT and local governments to initiate the expansion of USH 10/STH 441 Tri-County Freeway to 6-lanes from Oneida Street in **Calumet County**, to County Highway CB in **Winnebago County**.
- ◇ Staff participated in a web conference that focused on performance measures that can be used to evaluate the transportation system over time.
- ◇ The Commission, the **Winnebago County** Board and local jurisdictions have passed formal resolutions supporting the WisDOT's recommendations from the USH 41/USH 10/STH 441 study and have identified the completion of the project as a priority for **Winnebago County** and the Fox Valley.
- ◇ Staff continues work with **Winnebago County**, WisDOT and various local governments to develop a long range plan for the STH 21 corridor from the City of Oshkosh through the City of Omro. An important component of the STH 21 study is the location and connection with a proposed major north-south arterial being considered on the west side of Oshkosh.
- ◇ East Central continues work with the WisDOT and their consultants to prepare traffic forecasts for interchange and operational analysis of US 41 to improve the facility to interstate

standards over a number of years. USH 41 from Green Bay through Fond du Lac includes three major expansion projects scheduled over the next several years. (*Outagamie, Winnebago, and Fond du Lac Counties*).

- ◇ Staff continues work with the WisDOT to prepare the WIS 441/CTH KK transportation study for the southeast portion of the Fox Cities (*Outagamie, Winnebago and Calumet Counties*).
- ◇ Staff met with the *Winnebago County* Highway Commissioner to discuss MPO planning issues.
- ◇ Staff created a series of transportation e-newsletters and short news blasts to inform local staff, officials and stakeholders of important issues and project updates.
- ◇ Staff worked with *Outagamie County*, the City of Appleton and the Town of Grand Chute to develop a CTH JJ Corridor Study on bicycle and



“Complete Street” corridor plans that provide access to all modes.

pedestrian facility options from CTH A to STH 55 in *Outagamie County*.

Long-Range Transportation Planning

Regional Significance: As the Metropolitan Planning Organization (MPO) for the Fox Cities (Appleton) and Oshkosh urbanized areas and staff for the Fond du Lac urbanized area, Commission staff works with local governments and the public to comply with federal and state planning requirements for urbanized areas greater than 50,000 in population.

Regional Projects/Activities:

- ◇ East Central works with the WisDOT to develop and maintain land use and socioeconomic data required for the computer based travel demand models for transportation planning and analysis. Travel Demand Models are very useful in the alternative analysis portion of the planning process in-house. The Northeast Region Model includes all the counties adjacent to the USH 41 corridor from Green Bay through Fond du Lac and the lakeshore counties from Door to Sheboygan. The development and maintenance of the Northeast Region Travel Demand Model is a collaborative effort with the WisDOT, East Central RPC, Bay-Lake RPC and the Brown County Planning Commission (Green Bay MPO).
- ◇ Staff continues outreach activities to ensure that requirements for environmental justice are incorporated into MPO planning activities and that all populations have access to the planning process.
- ◇ Staff attended quarterly meetings of the USH 41 Disadvantaged Business Enterprise (DBE) Advisory Committee (*Winnebago County*).
- ◇ Staff attended monthly meetings of the Hispanic Interagency, Hmong American Partnership, WinnebagoLand Housing Coalition, Fox Cities Housing Coalition and others to promote regional transportation planning activities to agencies and others representing and working with underrepresented populations within the region.

- ◇ Staff assisted in developing a statewide Hmong Conference that was held in the Fox Cities.
- ◇ Staff participated in Diversity Circles to gain an understanding of other cultures.
- ◇ Staff developed a Diversity in Planning Conference to raise awareness and provide insight into including underrepresented populations into local and regional planning.
- ◇ Staff continued to monitor and comment on the federal transportation authorization bill, Moving Ahead for Progress in the 21st Century (MAP-21), enacted in July of 2012.
- ◇ Staff worked with the WisDOT to review criteria and guidance from the U.S. Census to compile 2010 census tract, block and block group data when it becomes available. The 2010 census data will be used to update the current socioeconomic data used in the travel demand models and other long range planning efforts.
- ◇ Staff compiled U.S. Census information and participated in a web conference relative to access and use of the Census Bureau software to organize and map the census tract and block data by county.
- ◇ Staff participated in a Federal Highway Administration webinar outlining the congestion management process that will be required now that the 2010 population of the Fox Cities Urbanized Area exceeds 200,000 as expected.
- ◇ East Central worked with WisDOT staff regarding the 2010 census data and the methodology that will be used to define new transportation analysis zones and districts that will be delineated and submitted to the U.S. Census as part of the Urbanized Area update process.
- ◇ Staff developed a Public Participation Plan and a Long-Range Transportation Plan for the Menominee Indian Tribe of Wisconsin (*Menominee County*).
- ◇ Staff met with the Town of Empire in *Fond du Lac County* to discuss options for local road improvements.
- ◇ Staff worked with Rahn Excavating to put together an estimate to reconstruct the Town of Empire's Grandview Road (*Fond du Lac County*).
- ◇ Staff put together bicycle lane configuration options for the Town of Neenah's Radcliff Road (*Winnebago County*).
- ◇ Staff put together an American Community Survey margin of error calculations worksheet.
- ◇ Staff built a new Appleton/Oshkosh and Fond du Lac Metropolitan Planning Organization website.
- ◇ Staff researched and began to develop the Congestion Management Process for the Appleton Transportation Management Area.
- ◇ Staff attended a number of webinars and workshops relating to Long Range Transportation Planning including:
 - ◆ National Highway Institute Low Cost Highway Safety Improvements Training Webinar
 - ◆ Annual WisDOT Freight Rail Conference
 - ◆ Wisconsin Land Information Association (WLIA) Census Data Workshop
 - ◆ HNTB Transit Model Coding Training
 - ◆ Regional Planning for Transit and Transit Oriented Development (TOD) Webinar
 - ◆ Forecasting Land Use Activity Workshop
 - ◆ Planning for Operations Workshop
 - ◆ Tribal Transportation Conference in Lac du Flambeau
 - ◆ MAP-21 webinar - How Metropolitan Planning Organizations Plan for and Fund Bicycling and Walking Investments

Local Assistance Projects & Activities:

- ◇ Staff completed the CTH JJ Corridor Study in **Outagamie County** (Study focused on bicycle and pedestrian recommendations for CTH JJ from CTH A to STH 55).
- ◇ Staff completed a sign inventory and analysis for the towns of Black Wolf, Winneconne and Vinland in **Winnebago County**.
- ◇ Staff developed a Microsoft Access Database interface for agencies to manage their traffic signs.
- ◇ Staff finalized work on a technical assistance project to produce a *Highway History and Potential Alternatives* report for **Calumet County**.
- ◇ Staff met with **Calumet County**, City of Appleton, City of Menasha, and Town of Harrison staff to discuss future improvements to CTH LP.
- ◇ Staff worked with the WisDOT Central Office and Northeast Region on functional class mapping for urbanized areas (**Calumet, Fond du Lac, Outagamie and Winnebago Counties**).
- ◇ Staff worked with WisDOT and their consultants to finalize year 2038 traffic forecast for the *Fox Cities Freeway Analysis* study. A portion of the study will be used to develop design volumes for the USH 10/WIS 441 expansion projects (**Calumet, Outagamie and Winnebago Counties**).
- ◇ At the request of the City of Appleton, staff prepared a traffic forecast and turn volumes for a number of intersections associated with Eisenhower Drive (**Outagamie and Calumet Counties**).
- ◇ East Central worked with the City of Appleton to develop a traffic forecast for Oneida Street from USH 10 to the Fox River (**Calumet and Outagamie Counties**).
- ◇ Staff continued work and participated in WIS 114 Study Stakeholders meetings considering a

long term vision for the highway between the Village of Sherwood and USH 10 in the Town of Harrison. Staff assisted with public information meetings regarding proposed long term improvements to WIS 114 between USH 10 and Sherwood (**Calumet County**).

Public Transit & Specialized Transportation Planning

Regional Significance: Transit planning concentrated on providing service to cost-effectively meet the needs of communities. Valley Transit, Oshkosh Transit System, and Fond du Lac Area Transit all continue to be in compliance with the American with Disabilities Act (ADA). Each of the systems surpasses the ADA requirements by providing complementary paratransit services for more hours and at a higher service level than required for those individuals who are unable to use the fixed route systems. Specialized transportation services are also available at the county level throughout the region.

Regional Projects & Activities:

Staff provided consistent updates/presentations to groups such as the Making the Ride Happen Board, Northeast Wisconsin Regional Access to Transportation (NEWRAT) Committee, ESTHER Transit Task Force, Fond du Lac Housing Coalition, Fond du Lac Hispanic/Latino Advisory Committee, Fox Valley Advocacy Coalition, **Winnebago County** Specialized Transportation Council, **Outagamie County** Specialized Transportation Planning and Policy Committee, **Waupaca County** Transportation Coordination Committee, **Calumet County** Aging and Disability Resource Center/Long Term Support Committee, and the **Shawano County**/City Transportation Advisory Committee with regard to East Central projects related to public and specialized transportation. These updates focused on federal planning requirements, medical assistance transportation/brokerage updates, Regional Transit Authority (RTA) enabling legislation discussions and proposals, and various capital and operational grant opportunities.

- ◇ East Central continued to work with **Calumet, Fond du Lac, Green Lake, Marquette, Menominee, Outagamie, Shawano, Waupaca, Waushara and Winnebago Counties** throughout the region to update, implement, and amend their respective *Locally Developed Public Transit/ Human Service Transportation Coordination Plans*.
- ◇ East Central was contracted by the Menominee Tribal Transit System (**Menominee County**) to develop and implement a transit rider's survey, as well as draft and produce a transit rider's brochure. Work began in late 2012 and is scheduled to be completed in the spring of 2013.
- ◇ Staff prepared a cost estimate and scope of services for the Menominee Tribal Transit System (**Menominee County**) to potentially update their *Transit Development Plan* (TDP) beginning in 2013.
- ◇ The Commission (MPO) maintained its cooperative planning agreement with the Fox Cities Transit Commission, Valley Transit, WisDOT and the City of Appleton to insure an open public transportation planning process per FHWA requirements.
- ◇ The Commission (MPO) passed a resolution designating Valley Transit as the recipient of Section 5307 Urbanized Area formula program funds for the Fox Cities Urbanized Area, a new requirement as the Fox Cities Urbanized Area has been designated as a Transportation Management Area (TMA) with a population of over 200,000 people.
- ◇ The Commission (MPO) maintained its cooperative planning agreement with Oshkosh Transit, WisDOT and the City of Oshkosh (**Winnebago County**) to insure an open public transportation planning process per FHWA requirements.
- ◇ Staff reviewed the recently released final updated Title VI Circular, "Title VI Requirements and Guidelines for Federal Transit Administration Recipients".



Working with transit providers to improved fixed route operation.

- ◇ With assistance from HNTB consultants, East Central staff conducted additional transit model analysis for the Oshkosh Transit System (now GO Transit) (**Winnebago County**). This analysis focused on several modifications to route alternatives identified in their *Transit Development Plan* (TDP), which was completed by East Central in 2011.
- ◇ In conjunction with the Bay-Lake Regional Planning Commission, East Central staff continues to facilitate the Northeastern (WI) Regional Access to Transportation Committee, which meets regularly to discuss regional specialized transportation coordination efforts over an eighteen county area. Staff also continues to maintain a website for that group.
- ◇ Staff gave a presentation on "Using Technology in Transit Planning" at the Wisconsin Chapter American Planning Association Conference in Oshkosh.
- ◇ Staff continued to participate in discussions regarding Regional Transit Authority (RTA) enabling legislation at the state-level.

- ◇ Staff continued to draft letters to state and federal legislators with regard to legislative impacts and funding allocations for public transportation/specialized transportation services, such as Regional Transit Authority (RTA) enabling legislation.
- ◇ Staff continued to testify at several Wisconsin Legislative Committee hearings with regards to Regional Transit Authority (RTA) enabling legislation.
- ◇ Staff continued to assist with data and mapping for the various public and specialized transportation services throughout the region.
- ◇ Staff continues to maintain a website for Making the Ride Happen (*Calumet, Outagamie and Winnebago Counties*).
- ◇ Staff monitored the impacts on public/specialized transportation caused by the continued implementation of Family Care initiatives throughout the region.
- ◇ Staff also monitored the continued implementation of the Medicaid transportation brokerage system in the State.
- ◇ Staff worked with the Fond du Lac Hispanic Interagency group to translate the *Fond du Lac Area Transit System's Rider's Guide* into Spanish.
- ◇ Staff continued to participate in a number of webinars, teleconferences, workshops and conferences regarding public transportation/specialized transportation services.
- ◇ Staff continued to work with the WisDOT and HNTB Consultants to maintain and utilize the transit mode of the Fox Valley and Northeast Wisconsin Region Travel Demand Model.
- ◇ Staff continued to serve on numerous request for proposal (RFP) evaluation committees for the provision of contracted transportation services.
- ◇ Staff participated in numerous interviews with local and regional media to discuss various transportation projects.
- ◇ East Central staff continues to participate in and/or serve on a number of other regional transit-related boards and committees including:
 - ◆ Northeastern Wisconsin Regional Access to Transportation Committee (Co-Founder);
 - ◆ Northeastern Wisconsin Regional Access to Transportation Committee – Task Force (staff served as Chair);
 - ◆ Fox Valley Advocacy Coalition (staff served as Chair for a portion of 2012);
 - ◆ Making the Ride Happen Board; and
 - ◆ Wisconsin Urban and Rural Transit Association (WURTA).



Coordination with various groups to provide access to transportation.

Local Assistance Projects & Activities:

- ◇ East Central completed and submitted the 85.21 County Elderly and Disabled Transportation Assistance Program grant for *Outagamie County*.
- ◇ Staff continues to review various public/specialized transportation grants at the request of the Wisconsin Department of Transportation to ensure inclusion in the *Locally Developed Public*

Transit/Human Service Transportation Coordination Plans and Transportation Improvement Programs (TIPs).

- ◇ Staff attended a Specialized Transportation/85.21 Round Table meeting in Green Bay hosted by the Greater Wisconsin Agency on Aging Resources (GWAAR).
- ◇ Staff continues to prepare an annual accomplishment letter on behalf of the **Winnebago County** Specialized Transportation Council (in which staff serves as chair) which is submitted to the **Winnebago County** Board and Human Services Committee.
- ◇ Staff met with **Winnebago County**, Oshkosh Transit, and other stakeholders to discuss transportation barriers in rural **Winnebago County**. Identification of such barriers resulted in **Winnebago County** receiving a transportation planning grant to do further study on the matter. East Central will be the lead contractor for the study beginning in early 2013.
- ◇ East Central staff continues to participate in and/or serve on a number of other local transit-related boards and committees. These groups include:
 - ◆ **Calumet County** Aging and Disability Resource Center (ADRC)/Long Term Support Committee;
 - ◆ **Outagamie County** Specialized Transportation Planning and Policy Committee;
 - ◆ **Shawano City/County** Transportation Coordination Committee;
 - ◆ **Waupaca County** Transportation Coordination Committee; and
 - ◆ **Winnebago County** Specialized Transportation Council (staff served as Chair).

Transportation Improvement Program

Regional Significance: Prepared annually, the Transportation Improvement Program (TIP) for the Fox Cities and Oshkosh Urbanized Areas includes all

anticipated federal and state aids for highway, transit, and other transportation projects in the urbanized area as a prerequisite for funding approval. The TIP process in 2011 again used the prioritization procedures for Surface Transportation Program (STP)-Urban projects submitted by the local municipalities. This process allows for full consideration of non-highway transportation projects and rewards highway projects for including accommodations for alternative transportation modes. Projects considered for STP-Urban funding must be included in the community's capital improvement program.

Regional Projects & Activities:

- ◇ Staff updated and completed the 2013 Fox Cities and Oshkosh Urbanized Area Transportation Improvement Program (TIP) (**Calumet, Outagamie, and Winnebago Counties**).
- ◇ In 2012 staff also updated and completed the Fond du Lac Urbanized Area Transportation Improvement Program (TIP) (Fond du Lac MPO).
- ◇ Staff met with Town of Harrison staff to discuss the proposed Eisenhower Drive and project selection process for the STP-Urban Transportation Improvement Program (TIP).
- ◇ Staff worked with the Village of Kimberly, Town of Buchanan, **Fond du Lac County**, and **Winnebago County** to plan for STP-Urban funding for their projects.
- ◇ Staff worked with the MPO transit agencies to get project listings for the *Annual Listing of Obligated Projects* that is required to be posted publicly.
- ◇ Staff worked with the MPO transit agencies to get them a letter of support from the MPO to be included in the State of Good Repair grant application.
- ◇ Staff attended WisDOT Local Program Meetings to discuss the STP and Local Bridge Improvement Programs.

Freight Planning

Regional Significance: The efficient movement of freight in and out of the region is a critical component of economic viability. Work continues with local governments, state, federal agencies, and freight stakeholders to identify needs and develop strategies to sustain and improve the freight transportation system.

Regional Projects & Activities:

- ◇ Under the 2012 transportation law, Moving Ahead for Progress in the 21st Century (MAP 21), the Federal Highway Administration and associated agencies are required to prepare a *National Freight Plan*. Staff continues work with the ten state Mid-America Freight Coalition to incorporate important local, regional and state freight corridors into the *National Freight Plan*.
- ◇ Staff participates in a monthly Federal Highway Administration sponsored web conference relative to freight planning, initiatives and best practices.
- ◇ Staff continues to incorporate freight into the planning process and is working with WisDOT and their consultants to improve the truck component of the NE Region Model. Freight rail is also important and staff continues outreach and support of public/private rail initiatives.
- ◇ Staff attended the annual WisDOT Annual Freight Rail Conference to discuss projects, funding, trends and issues regarding freight rail service in the region and state.
- ◇ Staff served on a Planning Committee for the 2012 Mid-America Freight Coalition Conference that highlighted MAP 21 freight legislation requiring a national plan and additions to the existing Freight Analysis Framework (FAF).
- ◇ Commission staff serves on a Mid-America Freight Coalition Advisory Committee documenting state freight planning activities and researching the role and formation of public/private freight advisory groups.

- ◇ Staff participated in the 2012 Port of Green Bay Symposium which focused on increasing the amount and types of freight that might use water transport as an alternative to rail and truck. Changing trends like truck and rail congestion (Chicago) and the worldwide containerization of freight may provide opportunities, alternatives and cost savings for businesses importing and exporting from northeast Wisconsin.
- ◇ East Central attended the second annual Governor's Freight Industry Summit that focused on collaboration and cooperation with industry stakeholders to improve the supply chain transportation system for freight transport.
- ◇ Staff attended a meeting of the Oshkosh Chamber Transportation Committee to discuss critical freight corridors that include WIS 26 between Oshkosh and Waupun.
- ◇ Staff serves on various freight sub-committees working to review, evaluate and comment on midwest freight research projects and grant applications submitted to the Center for Freight Infrastructure Research and Education (CFIRE).

Bicycle & Pedestrian Planning

Regional Significance: East Central works with the WisDOT, local governments and bicycle/pedestrian advocacy groups to develop and coordinate multi-modal trail systems and activities. Local trail segments are critical to providing linkages required for a regional system that serves the alternative transportation needs of the region's communities and urbanized areas.

Regional Projects & Activities:

- ◇ Staff began work in the summer of 2012 on a *Bicycle and Pedestrian Plan* for the Fox Cities and Oshkosh MPOs which is anticipated to be finished in early 2014 (*Calumet, Outagamie, and Winnebago Counties*). The project has received substantial positive media attention in which several radio and TV stations attended public information meetings in late 2012 on the

project. Staff also did a number of interviews with these media stations since the project began.

- ◇ Staff gave a presentation on the Fox Cities/Oshkosh Urbanized Areas Bicycle/Pedestrian Plan process at an **Outagamie County** Greenways Committee meeting, a **Winnebago County** Bike Safety Initiative group meeting, and at the MPO/RPC/WisDOT Annual Conference in Sheboygan.
- ◇ Staff drafted a newsletter article about the *Fox Cities/Oshkosh Urbanized Areas Bicycle/Pedestrian Plan* for the Fox Cities Greenways quarterly newsletter.

Local Assistance Projects & Activities:

- ◇ Staff worked with WisDOT to discuss putting Little Wolf River Trail signs up in the City of Manawa (**Waupaca County**).
- ◇ Staff worked with the City of Manawa, the Manawa Elementary School and the Little Wolf River Trail Committee to develop a bicycle and pedestrian audit that evaluated the existing bicycle and pedestrian facilities and provide recommendations for hazardous situations or inadequate facilities (**Waupaca County**).
- ◇ Staff met with the City of Waupaca, **Waupaca County** and representatives from the local UW system to discuss bicycle and pedestrian accommodations around the community (**Waupaca County**).
- ◇ Staff reviewed a copy of the adopted *City of Oshkosh Pedestrian and Bicycle Circulation Plan* (**Winnebago County**).
- ◇ Staff works closely with the Fox Cities Greenways including regular planning and stakeholder meetings (**Calumet, Outagamie, and Winnebago Counties**).



Students at Waupaca Learning Center participating in International Walk to School Day.

- ◇ Staff provided an overview of the *Fox Cities and Oshkosh Bicycle and Pedestrian Plan* project at the Fox Cities Greenways Annual Meeting (**Calumet, Outagamie, and Winnebago Counties**).
- ◇ Staff continues to work with NorthSTARS representatives and other stakeholders to address bicycle and pedestrian concerns and options for the CTH JJ corridor (**Outagamie County**).
- ◇ Staff worked with the City of Manawa and the Little Wolf River Trail Committee in **Waupaca County** to submit trail signage request to the WisDOT.
- ◇ Staff met with the Town of Empire, **Fond du Lac County**, to discuss options for local road improvements.
- ◇ Staff attended a number of webinars and workshops relating to bicycle and pedestrian planning including:
 - ◆ Introduction to General Planning Principles for Pedestrian Safety Webinar;

- ◆ Designing for Pedestrian Safety Training Course; and
- ◆ Pedestrian Safety Education Webinar.

Regional Safe Routes to School Planning

Regional Significance: East Central worked with the WisDOT to continue to develop a Regional Safe Routes to School (SRTS) Program. The mission of the program is to engage and empower schools and communities to improve the health and well-being of children and families by advocating safe walking and bicycling.

Regional Projects & Activities:

- ◇ Staff worked with WisDOT to establish a Regional Safe Routes to School Program (*All East Central Counties*). Regional SRTS activities included:
 - ◆ conducting Regional SRTS Advisory Committee Meetings;
 - ◆ coordination of a Stakeholders Meeting;
 - ◆ development of an International Walk to School Day Guidebook/Kit;
 - ◆ staff assistance to communities and school districts within the region to start up or continue SRTS activities; and



- ◆ coordination of student and parent surveys with schools participating in the Regional SRTS Program and compilation of survey data.

- ◇ Staff attended the following conferences, workshops and webinars:
 - ◆ James L. Oberstar National Safe Routes to School Award Ceremony, Omro Middle School
 - ◆ Safe Routes to School National Partnership Annual Meeting
 - ◆ Pro Walk, Pro Bike Conference
 - ◆ Shawano Pathways Organization for Kids, Environment & Safety (SPOKES) Annual Meeting
 - ◆ League of American Bicyclists Certification Training
 - ◆ Green Complete Streets Policy Implementation Workshop
 - ◆ Enforcement for Safe Routes to School Training
 - ◆ Wisconsin Safe Routes to School Coordinators Meeting
 - ◆ Fox Cities Greenways Trail Planning Workshop
 - ◆ Wisconsin State Prevention Conference
 - ◆ Wisconsin Annual Bike Summit
 - ◆ Ped and Pedal Network
 - ◆ Wisconsin Active Community Action Institute
 - ◆ Economic Benefits of SRTS Webinar
 - ◆ How MPOs Plan for and Fund Bicycling and Walking
 - ◆ Green Infrastructure and Transportation Planning
 - ◆ Using Health Impact Assessments to Connect Bicycle and Pedestrian Safety and Health
- ◇ Staff served on the Safe Routes to School National Partnership Steering Committee:
 - ◆ Staff served on the Executive Committee.
 - ◆ Staff served on the Governance Committee.

- ◇ Staff prepared materials for the following events:
 - ◆ International Walk to School Day
 - ◆ Bike to School Day/Bike Safety Day
 - ◆ Walking School Bus Program
 - ◆ Back to School Nights
 - ◆ The Parent Pledge Program
- ◇ The Regional SRTS Program received the Outstanding Coalition Award from the Wisconsin Clearinghouse for Prevention.
- ◇ Staff and the Regional Safe Routes to School Advisory Committee developed a *2012 Annual Report* for the Regional SRTS Strategic Plan.
- ◇ Staff served on the planning committee for the Education for Healthy Kids Summer Institute.
- ◇ Staff developed a performance evaluation tool and school recognition program for the Regional SRTS Program.
- ◇ Staff met with the Wisconsin Department of Health and Human Services to discuss partnerships between the health community and the Regional Safe Routes to School Program.
- ◇ Staff facilitated a meeting for the Fire Up Your Feet Program – WI with the WisDOT, Safe Routes to School National Partnership, the Bicycle Federation of WI, and La Crosse County Health Department.
- ◇ Staff partnered with the Building for Kids and Fox Cities Greenways to incorporate SRTS programming into their Eat Well, Play Well exhibit.
- ◇ Staff worked with a private consultant to develop a report on unusually hazardous busing.
- ◇ Staff continued to update the SRTS database for tracking Local SRTS program activities.
- ◇ Staff worked with the WisDOT to administer and draft a request for proposals for the Youth Engagement Program.
- ◇ Staff met with staff from North Central RPC and Bay Lake RPC to discuss the Regional SRTS Program.
- ◇ Staff discussed the Regional SRTS Program with the Greater Washington D.C. Regional Policy Manager for the SRTS National Partnership.
- ◇ Staff worked with representatives from the Wisconsin Department of Transportation, the Bicycle Federation of WI, Kimberly Clark Corporation, and SRTS National Partnership to discuss the school/student component of the Get Up and Ride Program.
- ◇ Staff developed walking/wheeling safety tip sheets to be used at bike rodeos and other related events.
- ◇ Staff developed a performance analysis tool for the Regional SRTS Program.

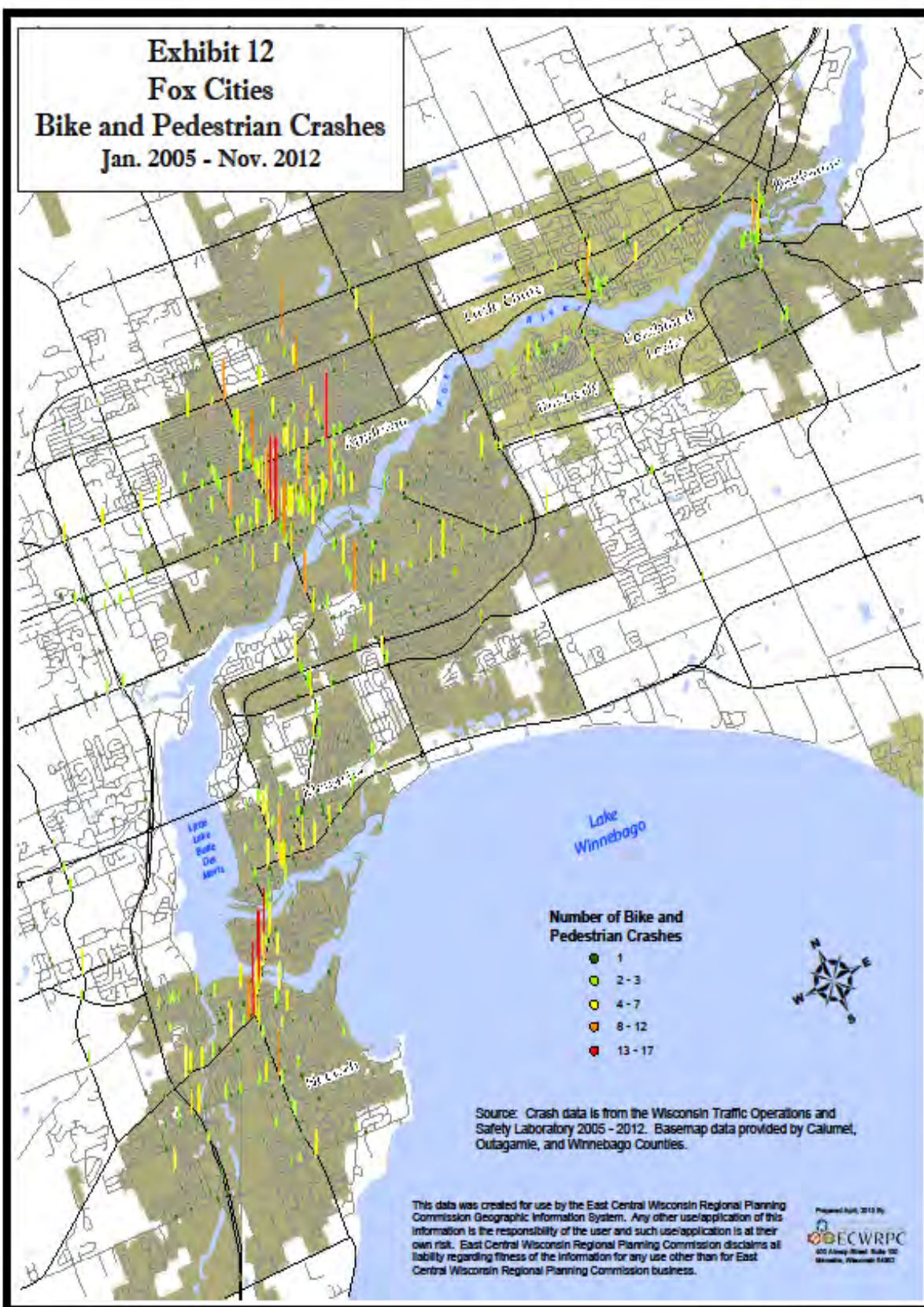
Marketing Projects & Activities:

- ◇ Staff worked on a marketing campaign for the Regional Safe Routes to School Program.



Students using the regional Safe Routes to School Bike Fleet for bicycle safety classes.

Exhibit 12
Fox Cities
Bike and Pedestrian Crashes
Jan. 2005 - Nov. 2012



- ◇ Staff re-designed the Regional SRTS website.
- ◇ Staff worked with a private consultant to set up YouTube and Flickr sites for pictures and videos.
- ◇ Staff also worked with the private consultant to provide:
 - ◆ Regional SRTS Marketing Workshop;
 - ◆ Social Media Training for SRTS Stakeholders.
- ◇ Staff worked with the private consultant to pitch stories to local newspapers and television stations.
- ◇ Staff worked with *Momentum Magazine* (national bicycling commuter magazine) to discuss the Omro SRTS Program.
- ◇ Staff conducted:
 - ◆ an interview with WHBY – Fox Cities Viewpoint;
 - ◆ a question and answer session with WHBY;
 - ◆ a number of interviews with local newspapers; and



Student travelling to school by bicycle.

- ◆ an interview with WBAY – Channel 2 Noon Show about the Regional SRTS program.

Local Assistance Projects & Activities:

- ◇ Staff coordinated the Safe Routes to School plans and plan updates for the following communities/school districts:
 - ◆ Clintonville School District (*Waupaca County*)
 - ◆ Coloma Elementary School (*Waushara County*)
 - ◆ Green Lake School District (*Green Lake County*)
 - ◆ Fond du Lac School District (*Fond du Lac County*)
 - ◆ Manawa School District (*Waupaca County*)
 - ◆ Menasha School District (*Winnebago County*)
 - ◆ Menominee Indian School District (*Menominee County*)
 - ◆ Menominee Tribal School (*Menominee County*)
 - ◆ Neenah School District (*Winnebago County*)
 - ◆ New London School District (*Outagamie and Waupaca Counties*)
 - ◆ Oshkosh School District (*Winnebago County*)
 - ◆ Ripon School District (*Fond du Lac County*)
 - ◆ Waupaca School District (*Waupaca County*)
 - ◆ Weyauwega Fremont School District (*Waupaca County*)
 - ◆ Shawano School District (*Shawano County*)
- ◇ Staff assisted and coordinated Safe Routes to School implementation activities for the following communities/school districts:
 - ◆ Appleton School District (*Outagamie County*)
 - ◆ Berlin School District (*Green Lake County*)

- ◆ Brillion School District (*Calumet County*)
 - ◆ Fond du Lac School District (*Fond du Lac County*)
 - ◆ Green Lake School District (*Green Lake County*)
 - ◆ Hortonville School District (*Outagamie County*)
 - ◆ Kimberly School District (*Calumet and Outagamie Counties*)
 - ◆ Manawa School District (*Waupaca County*)
 - ◆ Markesan School District (*Green Lake County*)
 - ◆ Menasha School District (*Calumet and Winnebago Counties*)
 - ◆ Neenah School District (*Winnebago County*)
 - ◆ New London School District (*Outagamie and Waupaca Counties*)
 - ◆ Ripon School District (*Fond du Lac and Winnebago Counties*)
 - ◆ Omro School District (*Winnebago County*)
 - ◆ Oshkosh School District (*Winnebago County*)
 - ◆ Shawano School District (*Shawano County*)
 - ◆ Waupaca School District (*Waupaca County*)
- ◇ Staff assisted with SRTS grant applications for the following local communities and school districts:
- ◆ City of Brillion (*Calumet County*)
 - ◆ Village of Coloma (*Waushara County*)
 - ◆ City of Neenah (*Winnebago County*)
 - ◆ City of New London (*Waupaca County*)
 - ◆ City of Shawano (*Shawano County*)
 - ◆ City of Omro (*Winnebago County*)
 - ◆ Town of Greenville, Village of Hortonville, and Hortonville Area School District (*Outagamie County*)
- ◇ Staff assisted with prepared materials and helped to coordinate events for International Walk to School Day:
- ◆ 85 schools within the East Central region participated in International Walk to School Day (*Calumet, Fond du Lac, Green Lake, Outagamie, Shawano and Waupaca Counties*).
- ◇ Staff prepared materials and helped to coordinate events for Bike Safety Day. Bike Safety Day activities ranged from bike rodeos to wear your helmet to lunch contest and biking to school.
- ◆ 80+ schools within the East Central region participated in Bike Safety Day (*Calumet, Fond du Lac, Green Lake, Outagamie, Shawano and Waupaca Counties*).
- ◇ Staff helped to coordinate three walking school bus programs at:
- ◆ Riverside Elementary School – Fond du Lac School District (*Fond du Lac County*);
 - ◆ Green Lake Elementary School (*Green Lake County*);
 - ◆ Worked with the UW-Oshkosh nursing program to develop a partnership with UW-Oshkosh nursing students to implement a walking school bus program at Oshkosh Area Schools for their capstone project.
- ◇ Staff participated in the following events or presentations:
- ◆ re:Th!nk Presentation on the Regional Safe Routes to School Program (*Winnebago County*);
 - ◆ Helmet Safety Presentation at the Building for Kids (*Outagamie County*);
 - ◆ Safe Routes to School Booth with Fox Cities Greenways at the Appleton Farmers Market;
 - ◆ PBS Kids “Get Up and Go!” Day at the Building for Kids (*Outagamie County*); and

- ◆ a bike rodeo for the Summer School Program at the Salvation Army Children's Learning Center in Menasha.
- ◇ Staff prepared materials for, and participated in, the bike rodeo at Jefferson Elementary School in Oshkosh (*Winnebago County*).
- ◇ Staff served on the *Winnebago County* Community Health Improvement Planning Committee – Physical Activity Work Group.
- ◇ Staff led a bike rodeo at the Building for Kids Children's Museum.
- ◇ Staff assisted and coordinated the following activities for the Transform WI Grant for *Shawano County*:
 - ◆ prepared a schedule and other materials related to the start up period for the Transform WI Grant;
 - ◆ reviewed Joint Use Agreement best practices for the project;
 - ◆ attended the Zion Lutheran Health Fair;
 - ◆ prepared survey materials for the Transform WI Project;
 - ◆ presented to the Healthy *Shawano County* Steering Committee;
 - ◆ attended a CHANGE Assessment Training;
 - ◆ participated in numerous conference calls for the project;
 - ◆ prepared and developed outreach materials for the Transform WI project; and
 - ◆ attended the Transform WI Action Institute.

Regional Projects & Activities:

- ◇ Staff works with the WisDOT annually to update the WisDOT 6-Year Program maps for both WisDOT Regions (*All East Central Counties*).
- ◇ Staff continues work to provide technical assistance to member jurisdictions using the Wisconsin Information System for Local Roads (WISLR) to complete the biennial road ratings and submit the data to the WisDOT.
- ◇ Staff offers training and technical assistance to member jurisdictions in using the Pavement Surface Evaluation Rating (PASER) method to evaluate and rate their local roads and incorporate the data into WISLR.
- ◇ East Central continues to consider regional air quality issues and attends meetings related to the WDNR's air quality monitoring network and program.

Local Assistance Projects & Activities:

- ◇ Commission staff continues to work with member counties and communities to provide traffic information and forecast for various plans and projects.
- ◇ Staff regularly attends County Highway Committee or informational meetings to discuss transportation plans and programs.

Regional and Technical Assistance

Regional Significance: The Commission provides assistance to counties and local units of government as part of the WisDOT's Regional Transportation Program. In the context of the overall transportation system, some local roadway and land use decisions have regional impacts on economic development and the transportation system.

Open Space & Recreation Planning Program

Regional Open Space Planning

Regional Significance: In 1977, the Commission adopted its first Regional Open Space & Recreation Plan. This plan has served the region well as a guide to the protection of many areas within the region for the purpose of providing public open space and recreational opportunities. The implementation of this plan has been occurring since its adoption over 30 years ago and is now supplanted by the *Year 2030 Regional Comprehensive Plan*. The plan recommendations, coupled with the local actions taken by counties and communities, have kept the Commission involved with the plan's implementation.

Regional Projects & Activities:

- ◇ East Central remained actively involved with efforts by Fox Cities Greenways, re:Th!nk Winnebago, and other local groups to preserve open space and coordinate trail development throughout the urbanizing areas of the Fox Cities (Calumet, Outagamie and Winnebago Counties).
- ◇ Staff attended various workshops and events to obtain and share knowledge on parks and recreation issues:
 - ◆ 2012 Wisconsin Park and Recreation Association (WPRA) annual conference in Wisconsin Dells;
 - ◆ webinars on trail designs and recreational facility development; and
 - ◆ completed the online survey of the National Park Service Association Park and Recreation Operating Ratio and Geographic Information System (PRORAGIS) inventory and presented information to the Wisconsin Land Information Association.
- ◇ At the request of the WDNR, staff participated in conference calls as part of the Advisory Committee on the *Statewide Comprehensive Outdoor Recreation Plan 2012-2016* (SCORP).
- ◇ Staff completed articles for the environmental e-newsletter and added e-mail contacts to the Constant Contact website.

Local Assistance Projects & Activities:

- ◇ Staff attended monthly Northeast Wisconsin Parks and Recreation Organization (NEWPRO) user group meetings.
- ◇ Staff was an active member of the **Waushara County** Food Connections Steering Committee. As part of this involvement, staff assisted the county in the preparation of a background report and brochure that will be used to disseminate information that had been obtained during the planning process. Staff promoted this effort



Winnebago County Parks System – Community Park.

through a presentation at the American Planning Association – Wisconsin Section Spring 2012 conference.

- ◇ At the request of **Calumet County**, staff facilitated meetings of a regional park group to look at the further available properties for the creation of a park in the Town of Harrison (**Calumet County**).
- ◇ Staff worked closely with the City of New Holstein (**Calumet County**) to implement a 2012 WDNR Urban Forestry Grant which involved the hiring of a consultant to prepare a *Tree Management Plan* for Civic Park, as well as to conduct educational activities and develop materials.
- ◇ The Commission continued to work with the Town of Greenville (**Outagamie County**) staff on the implementation of their Land Stewardship Strategy which was prepared and adopted in 2012.
- ◇ Staff prepared two site master plans for the City of Fond du Lac's (**Fond du Lac County**) Hunter's Grove Park and Meadowlands Park.
- ◇ Local Outdoor Recreation Plan Updates - Assisting counties and local communities to keep their open space and recreation plans up to date has long been a staple of East Central's technical assistance program. These plans are prepared by East Central staff at no direct cost for those counties and municipalities who request this service and are selected through the Commission's evaluation process. A current plan serves as a guide for orderly park acquisition and development and is also a requirement for participation in matching state and federal funding programs. The following updates or related activities were worked on by Commission staff during 2012:
 - ◆ City of Brillion (**Calumet County**)
 - ◆ **Waushara County**
 - ◆ **Winnebago County**
 - ◆ Town of Buchanan (**Outagamie County**)

- ◇ Staff assisted the Village of Hortonville (**Outagamie County**) with initial mapping and design concepts for a trail planning/connections project.
- ◇ Staff worked on a mapping graphic for the Neenah-Menasha Park Corps website: nmparkcorps.org (**Winnebago County**).

Fox-Wisconsin Heritage Parkway (FWHP)

East Central has been working on efforts to preserve the Fox River locks system since the U.S. Army Corps of Engineers first petitioned for its abandonment in the early 1980s. Over the years this support has grown to encompass the Fox-Wisconsin Heritage Parkway (FWHP). The FWHP seeks a focus on the scenic, recreational, and historic aspects of the river by improving access to and providing appropriate development of state and other publicly owned lands as well as promotion of public and private historical sites and attractions adjacent to the locks and elsewhere along the river. In August 2011, the Commission completed a draft update of the *Fox*



River Heritage State Parkway Concept Plan in 1997. The *FWHP Action Plan* reviews and updates existing goals as well as creating new goals for the FWHP. 2012 activities focused on implementation of the updated plan and FWHP Board involvement.

Regional Projects & Activities:

In 2012, the *Fox-Wisconsin Heritage Parkway Action Plan* was implemented. This project and the following activities have positively impacted the development and local economies of ***Outagamie, Winnebago, Calumet, Waushara, Green Lake and Marquette Counties***. To grow the Fox-Wisconsin Heritage Parkway, the following activities were completed by East Central staff:

Planning:

- ◆ Continued to research National Heritage Area best practices
- ◆ Developed committee structure for *FWHP Action Plan* implementation
- ◆ Participated in the development of the *FWHP Economic Impact Plan*
- ◆ Participated in the development of the *FWHP Interpretive Master Plan* (Open Space)
- ◆ Prepared two letters of support for a proposed Fox-Wisconsin Heritage Parkway grant application

Outreach:

- ◆ Staff participated in an Army Corps of Engineers conference call regarding the Lake Winnebago winter drawdown strategy
- ◆ Presented to communities and organizations within the FWHP
- ◆ Responded to property rights inquiries
- ◆ Prepared and submitted letters of support for FWHP related activities
- ◆ Served as an active Board Member for the Friends of the Fox
- ◆ Coordinated activities and developed materials for the annual Canoeopia kayak/canoe event in Madison

Coordination:

- ◆ Met with FWHP staff on a regular basis to plan and coordinate FWHP work
- ◆ Prepared for and attended FWHP Board meetings as the Board Secretary
- ◆ Prepared for and hosted FWHP Upper Fox River Committee meetings on a monthly basis
- ◆ Participated in FWHP Lower Fox River Committee meetings
- ◆ Coordinated volunteer activities
- ◆ Organized and updated FWHP documents
- ◆ Prepared and submitted non-profit annual reports as required by the state

- ◇ Staff developed maps and graphics for the Fox-Wisconsin Heritage Parkway.

Local Assistance Projects & Activities:

- ◇ Staff attended Lower Fox River Committee meetings on a monthly basis (***Outagamie, Calumet and Winnebago Counties***).



Fox-Wisconsin Heritage Paddlers in the Menasha Lock.

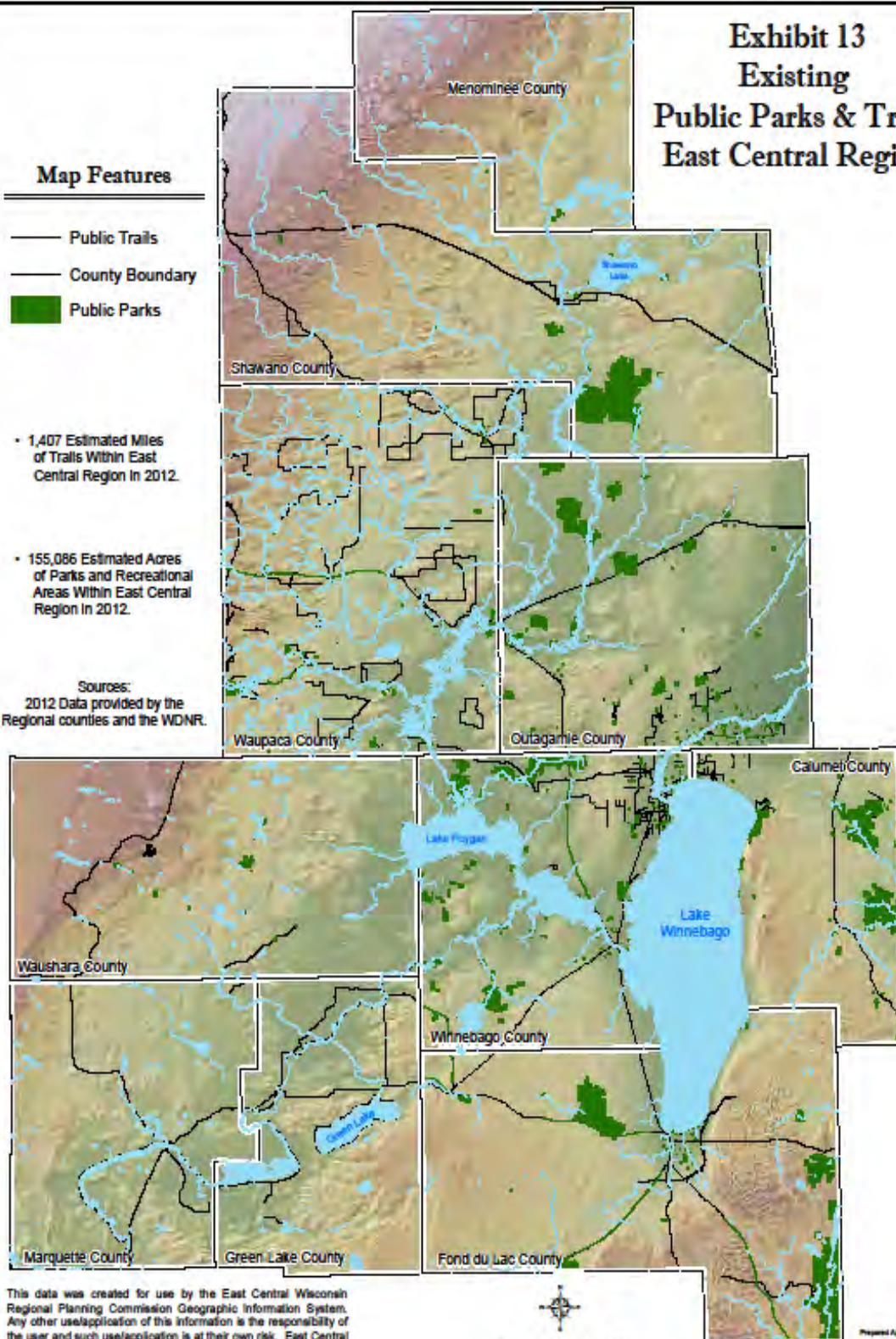
Exhibit 13 Existing Public Parks & Trails East Central Region

Map Features

- Public Trails
- County Boundary
- Public Parks

- 1,407 Estimated Miles of Trails Within East Central Region In 2012.
- 155,086 Estimated Acres of Parks and Recreational Areas Within East Central Region In 2012.

Sources:
2012 Data provided by the
Regional counties and the WDNR.



This data was created for use by the East Central Wisconsin Regional Planning Commission Geographic Information System. Any other use/application of this information is the responsibility of the user and such use/application is at their own risk. East Central Wisconsin Regional Planning Commission disclaims all liability regarding fitness of the information for any use other than for East Central Wisconsin Regional Planning Commission business.



Prepared April, 2013 By
ECWRPC
420 Alameda Street, Suite 100
Winnebago, Wisconsin 54987

- ◇ Staff attended Upper Fox River Committee meetings (*Winnebago County*).
- ◇ Staff met with officials from the following communities to discuss the FWHP and review potential projects: City of Oshkosh (*Winnebago County*), City of Neenah (*Winnebago County*), City of Omro (*Winnebago County*), City of Menasha (*Winnebago County*), Town of Menasha (*Winnebago County*), City of Appleton (*Outagamie County*), Town of Grand Chute (*Outagamie County*), City of Kaukauna (*Outagamie County*), Village of Little Chute (*Outagamie County*), Town of Harrison (*Calumet County*), *Winnebago County*, *Calumet County*, and *Outagamie County*.
- ◇ Staff reviewed plans for Lock Tender House renovations for the Lower Fox River (*Outagamie County*).

Economic Development & Housing Program

Regional Economic Development

Regional Significance: As a designated Economic Development District (EDD) for the Economic Development Administration (EDA) of the U.S.

Department of Commerce, East Central receives funding to carry out various planning activities and to assist local units of government with economic development activities. These efforts are funded in part by a 3-year Planning Partnership Award (2012-2014) from EDA and are briefly summarized here.

Regional Projects and Activities:

- ◇ The *2012 Comprehensive Economic Development Strategies (CEDS) Annual Report and Supplement* was prepared to provide updated socioeconomic data and economic development initiatives that built upon the 2008 5-year CEDS update. The CEDS is designed to evaluate the regional economy by taking an inventory of the key issues and opportunities affecting the region. The plan provides key goals and objectives for regional economic development, and provides specific steps the Commission, in collaboration with regional partners, can take to implement the plan. The plan was prepared under the guidance of a committee, termed the CEDS Strategy Committee, which was composed of economic development professionals, private sector representatives, and government officials from throughout the region. Current local and regional economic development and infrastructure projects are listed and prioritized in the 5-year plan and its subsequent annual reports, as is a listing of available economic development programs and resources. Eligibility of the region's counties and communities for EDA grants is ensured by the production and annual maintenance of the CEDS.
- ◇ Project Development – Staff utilizes projects from its Annual CEDS process and coordination with regional economic development

organizations to identify potential local and regional scale economic development-related studies and projects that may be eligible for federal, state, and/or other funding. In 2012, the following regional projects were furthered or considered with Commission assistance:

- ◆ As part of an EDA Community Trade Adjustment Assistance funding opportunity, staff developed an export strategy for the East Central region. This project conducted an inventory, analysis, and development of recommendations for increasing exports. From this work, staff prepared the *Northeast Wisconsin Global Trade Strategy* reports.
- ◆ Staff co-chaired the Global New North Taskforce. This taskforce is charged with implementing the goals and recommendations found within the *Northeast Wisconsin Global Trade Strategy* reports.
- ◆ The Oshkosh Chamber of Commerce and Oshkosh Area Economic Development Corporation (**Winnebago County**) were awarded \$40,000 through an EDA Local Technical Assistance Grant to complete an *Oshkosh Area Targeted Business and Industry Cluster Analysis*. Staff shared regional information and provided EMSI Analyst data to assist in their cluster study. The final report is set to be complete in early spring, 2013.
- ◆ Staff participated in several meetings with the **Shawano County** Economic Progress, Inc. and other **Menominee County**, Menominee Tribe, Stockbridge/Munsee Tribe, and City of Shawano staff to explore project ideas for possible EDA funding consideration.

- ◆ Staff attended a meeting of the Northeast Wisconsin Educational Resource Alliance (NEWERA) Board to introduce the Commission and EDA funding programs.
 - ◆ The Commission worked with the Wisconsin Economic Development Corporation (WEDC) to develop an MOU which provides the Commission with EMSI Analyst software and funding to conduct economic impact assessments upon request.
- ◇ Regional Coordination – East Central serves to share and disseminate information regarding economic development opportunities and assist in continued regional economic development activities. East Central staff continues to serve as an active member of the following regional economic development organizations and efforts:
- ◆ Northeast Wisconsin Regional Economic Partnership (NEWREP), which ECWRPC staff is currently assuming financial administrative responsibilities, was initially designed to implement the state’s Technology Zone Tax Credit Program, which has since been dissolved. NEWREP’s role has broadened from its original purpose, and has grown to focus on



economic development strategies that strive to improve the economy of the 18 member counties. Activities include the Northeast Wisconsin Business Plan Competitions (Commission staff served on the 2012 contest committee), and collection and dissemination of business attitudes through the Executive Pulse Software.

- ◆ New North, Inc. – Staff has worked collaboratively with New North, Inc. to advance their mission “to promote cooperation and economic development in the 18-county region of Northeast Wisconsin,” with business recruitment and retention efforts by filling data requests and providing resources as needed. Staff worked with New North to coordinate a Northeast Wisconsin Global Trade Strategy Stakeholder Committee, designed to discuss the potential strategy and process for developing a Global New North Task-Force and an export assistance clearinghouse site.
 - ◆ Fox Cities Economic Development Partnership (FCEDP) – The Partnership is charged with managing the economic development and marketing of the greater Fox Cities Area (*Calumet, Outagamie and Winnebago Counties*).
 - ◆ The Commission actively participated in meetings of the Fox Cities (*Calumet, Outagamie and Winnebago Counties*) Chamber of Commerce Local Issues Committee meetings, the Heart of the Valley (*Outagamie County*) Chamber of Commerce Legislator meetings, and the Oshkosh (*Winnebago County*) Chamber’s Governmental Affairs Committee.
- ◇ Commission staff attended, actively participated in, and in some cases helped plan and coordinate a number of workshops and conferences in order to keep informed on economic development

issues and opportunities as well as to collaborate on broader project initiatives:

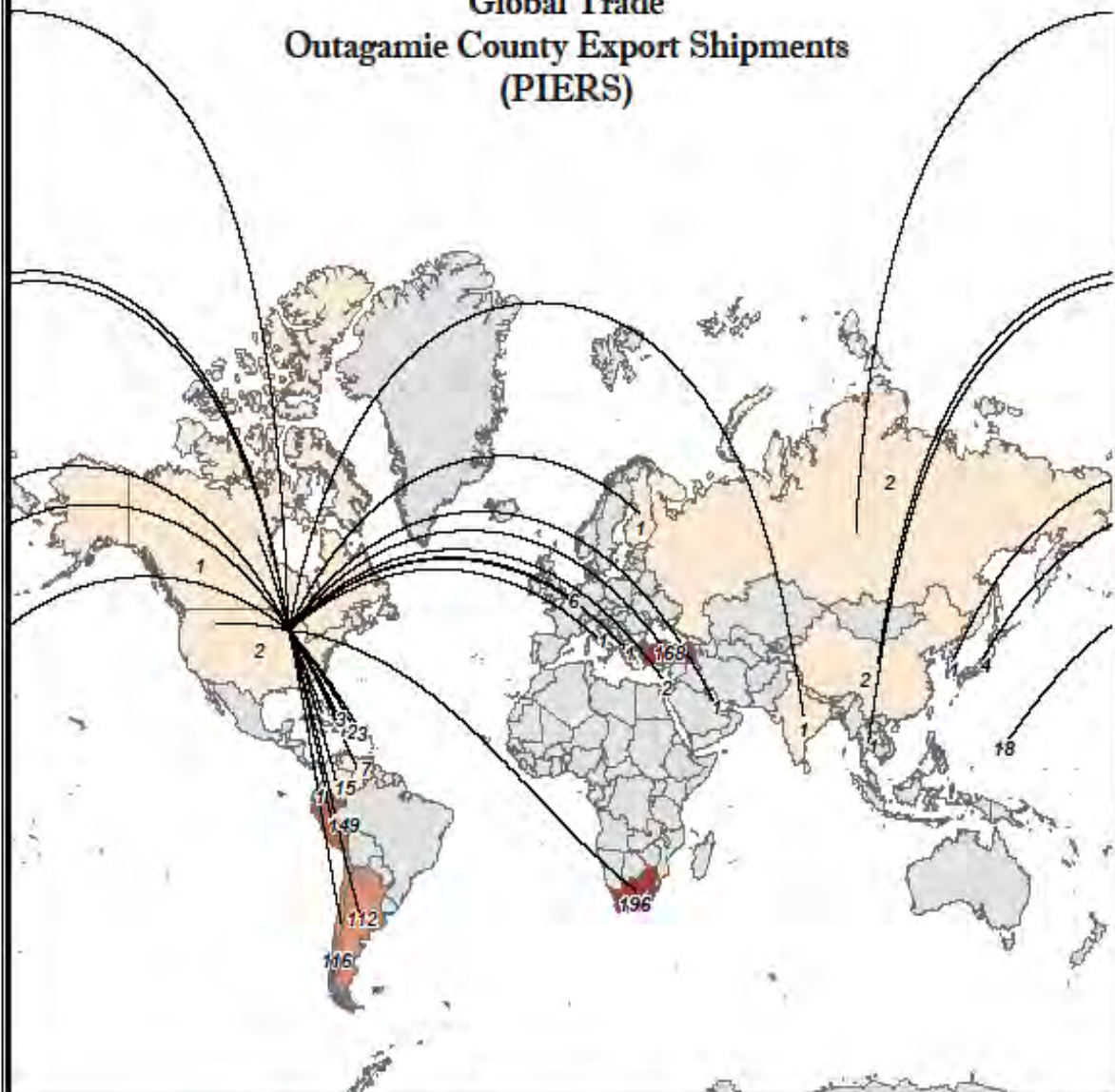
- ◆ Staff attended the 9th Annual 2012 New North Summit on Economic Development.
- ◆ Staff attended the 2012 Annual Tri-County Regional Economic Development Corporation's Economic Development Summit (*Waushara, Green Lake, and Marquette Counties*).
- ◆ Staff attended the 2012 Governor's Conference on Economic Development sponsored by the Wisconsin Economic Development Association (WEDA).
- ◆ Staff attended the 2012 Annual InDevelopment Conference held in Appleton (*Outagamie County*).
- ◆ Staff attended the Ignite Fox Cities Forum hosted by the Fox Cities Chamber of Commerce (*Calumet, Outagamie, and Winnebago Counties*). The Commission also provided a support letter to *Outagamie County* for this initiative.
- ◆ Staff attended a workshop on the American Community Survey at the 2012 Annual Wisconsin Land Information Association (WLIA) Conference in Stevens Point.
- ◆ Staff attended the Fox Cities Tourism Breakfast in Neenah (*Winnebago County*) regarding current tourism practices for the State of Wisconsin.
- ◆ Staff attended the WI American Planning Association (WAPA) Conference in Oshkosh (*Winnebago County*). At the conference, staff delivered a presentation about the *Northeast Wisconsin Global Trade Strategy* project.
- ◆ Staff attended WEDC regional RLF meetings to discuss the future of a

regional Revolving Loan Fund (RLF) in the East Central Region.

- ◆ Staff attended the EDA Know Your Region Webinar and EDA quarterly meetings to learn about upcoming grant cycles and updates on new EDA regulations and CEDS requirements.
- ◆ Staff attended the EDA Chicago Regional Office University Center Showcase to learn about EDA projects throughout the EDA Chicago Region.
- ◆ Staff attended the "Teachable Fit" group seminar held by Fox Valley Workforce Development featuring Molly Newman's strategy to address the talent shortage in Wisconsin.
- ◆ Staff attended the WEDC "Road Trip" meeting at the Appleton Public Library to become better informed on WEDC programs and initiatives.
- ◆ Staff attended a "Talking Freight" webinar on freight transportation and its role in economic development.
- ◆ Staff attended the Fox Cities Chamber of Commerce Economic Development breakfast to learn about outcomes and recommendations from the *Ignite Fox Cities* report (*Calumet, Outagamie, and Winnebago Counties*).



Exhibit 14 Global Trade Outagamie County Export Shipments (PIERS)



From Outagamie County

COUNTRY	SHIPMENTS
Argentina	112
Bahamas	8
Belgium	8
Canada	1
Chile	118
China	2
Colombia	16
Dominican Republic	1
Ecuador	1
Finland	1
Greece	1
Guam	18
India	1
Israel	2

COUNTRY	SHIPMENTS
Italy	1
Japan	4
Peru	148
Puerto Rico	22
Qatar	1
Republic of Korea	1
Russia	2
Thailand	1
Turkey	196
Turkmenistan	3
U.S.	2
Venezuela	7
Virgin Islands	3

0 2,000 4,000
Scale in Miles



Source: 2011 PIERS Export Data

This data was created for use by the East Central Wisconsin Regional Planning Commission Geographic Information System. Any other use/application of this information is the responsibility of the user and such use/application is at their own risk. East Central Wisconsin Regional Planning Commission disclaims all liability regarding fitness of the information for any use other than for East Central Wisconsin Regional Planning Commission business.

Prepared April, 2013 by
East Central Wisconsin Regional Planning Commission
ECWRPC
420 County Road, Suite 100
Menomonie, Wisconsin 54751

- ◆ Staff attended the Northeast Wisconsin “Locate in Wisconsin” training session. This web tool is designed to assist state and local economic developers with attracting new businesses.
- ◆ Staff attended the Lakeshore Industry Cluster Initiative (LICI) kickoff meeting pertaining to the lakeshore (includes **Calumet County**) sub-regional clusters of Manufacturing, Energy, Agriculture and Tourism.
- ◆ Staff attended meetings at the Fox Cities Economic Development Partnership (FCEDP) and discussed priorities from the Fox Cities Chamber study *Ignite Fox Cities (Calumet, Outagamie, and Winnebago Counties)*.
- ◆ Staff attended the Wisconsin Economic Development Association (WEDA) Fall Regional Conference.
- ◆ Staff met with economic development professionals to discuss the potential for EDA assistance to fund an incubator/accelerator study for the Fox Cities.

Local Assistance Projects & Activities:

- ◇ Also referred to as the Economic Development Technical Assistance Program (partially funded through EDA), East Central responds to numerous requests for information, referrals, and assistance regarding economic information and funding sources to counties, communities, businesses, development organizations, as well as individuals throughout and outside the region, such as:
 - ◆ Staff facilitated and participated in conference calls with the City of Berlin (**Green Lake County**) and EDA regarding potential EDA Public Works Grants. A decision was made not to apply.
 - ◆ Staff met with economic development staff in Oshkosh (**Winnebago County**) to discuss possible EDA funding

options for the UW Oshkosh business accelerator program feasibility study. After meeting with the City of Oshkosh and **Winnebago County** representatives regarding EDA funding opportunities, the decision was made to apply for an EDA Public Works Grant for an Oshkosh Aviation Business Park associated with the proposed airport expansion project.

- ◆ Staff facilitated conference calls with EDA and the City of Waupaca (**Waupaca County**) to discuss potential grant opportunities for the City after the Kraft Cheese Plant closure notice.
- ◆ Staff attended/participated in a workshop hosted by Northeast Wisconsin Educational Resource Alliance (NEWERA) to brainstorm sustainable economic development project ideas for future EDA grant funding. Staff facilitated and attended further meetings to discuss EDA funding programs.
- ◆ Staff worked with the following local entities to communicate, assist, and coordinate as necessary, local and regional economic development projects and activities:
 - **Calumet County** Economic Development group;
 - Greater **Outagamie County** Economic Development Corporation;
 - **Waupaca County** Economic Development Corporation Revolving Loan Fund Committee to assist in the review of loan applications;
 - Tri-County (**Waushara, Green Lake and Marquette Counties**) Economic Development Corporation; and
 - **Shawano County** Economic Progress, Inc. (SCEPI).

State Data Center Affiliate

Regional Significance: East Central receives census materials and Demographic Service Center publications from WDOA, plus additional information and reports from other state agencies. In return, East Central holds this information in its library and provides data, information, technical assistance and education to local governments, agencies, businesses and the public upon request. East Central also uses this information for planning purposes and publishes it within East Central reports. An annual report of these activities and requests is provided to the State.

Regional Projects and Activities:

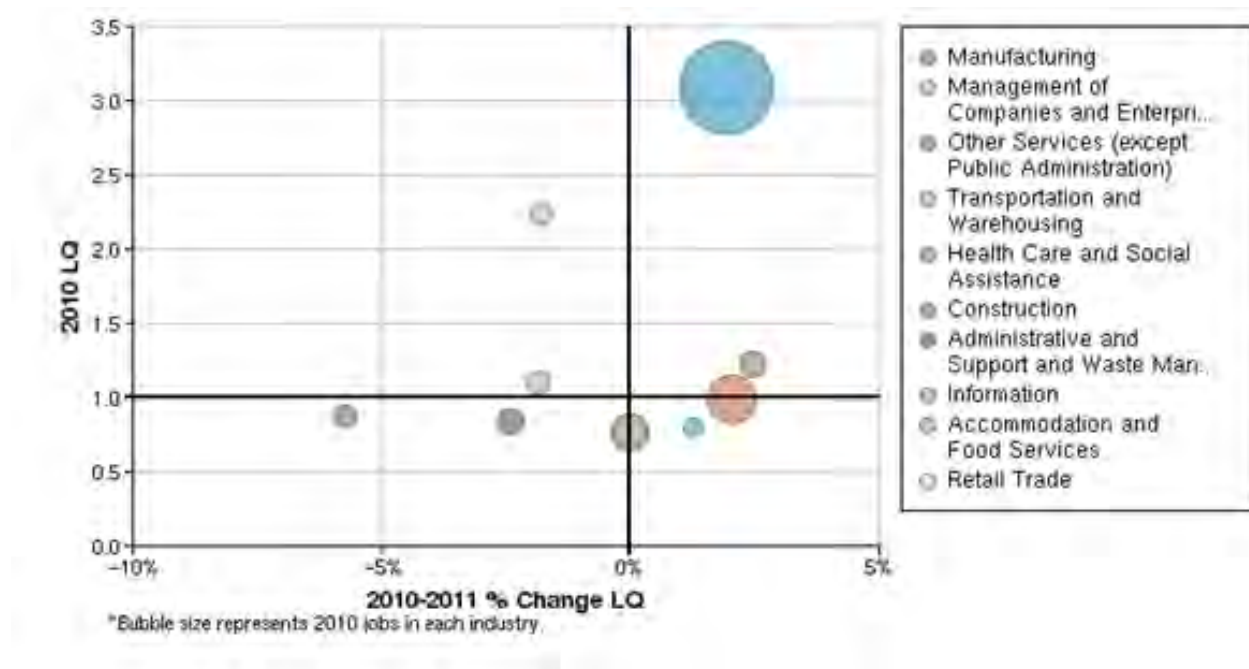
- ◇ Staff used EMSI Analyst to fulfill demographic and economic data requests from requesting economic development entities or municipalities within the East Central Wisconsin Region as a service of WEDC.
- ◇ Staff finalized 2011 calendar year data requests for the *State Data Center 2012 Annual Report* to the Wisconsin Department of Administration, a

yearly requirement to maintain State Data Center Affiliate status.

- ◇ Staff provided information to the Oshkosh Chamber of Commerce and Oshkosh Area Economic Development Corporation (*Winnebago County*) regarding how the ECWRPC CEDS goals and industry clusters support the Oshkosh Area Targeted Business and Industry Cluster Analysis EDA Local Technical Assistance grant application.
- ◇ Staff prepared an assessment of the *Northwoods NiiJii, Demographic Outcomes Data Report 1989-2010* for the Menominee Indian Tribe of Wisconsin.
- ◇ Staff provided Fox Valley Transit with population estimates for disabled veterans in the City of Appleton obtained from the American Community Survey (ACS).

Local Assistance Projects & Activities:

- ◇ Staff responds to requests on a regular basis from public and private sector entities for information and technical assistance regarding



Winnebago County Location Quotient Breakdown – Change in Jobs by Industry; Source: EMSI Complete Employment - 2012.1

census, housing and economic data and information. These requests included:

- ◆ Staff gathered 2010 population and housing census data to update the *Waupaca County Inventory and Trends Report* for the *Waupaca County* comprehensive plan update.
- ◆ Staff followed up on a request for grant/funding information for a business owner in Plainfield (*Waushara County*).
- ◆ Staff met with the Village of Black Creek (*Outagamie County*), Black Creek Business Association and UW Extension to discuss the technical assistance request for a marketing/economic profile and to discuss plans for a future marketing study.
- ◆ Staff assembled census data and composed the demographic and economic development sections for the *Menominee Indian Tribe of Wisconsin's Land Use Plan (Menominee County)*.
- ◆ Staff assisted the Town of Menasha (*Winnebago and Calumet Counties*) with the update of their comprehensive plan by providing 2010 Census and 2006-2010 American Community Survey data as a part of the Commission's technical assistance program.
- ◆ Staff worked with the Town of Buchanan (*Outagamie County*) to prepare an *Economic Development Strategy* for the Town as part of the Commission's technical assistance program. Commission staff facilitated an economic development SWOT analysis exercise and presented the Economic Development Strategy to the Town of Buchanan with input from Town staff and the Town Plan Commission. The final strategy was

adopted by the Town of Buchanan Board.

- ◆ Staff assisted the City of Oshkosh (*Winnebago County*) with an update of their comprehensive plan by providing 2010 Census and 2006-2010 American Community Survey data as a part of the Commission's technical assistance program.
- ◆ Staff assisted the City of Kaukauna (*Outagamie County*) with an update of their comprehensive plan by reviewing and providing preliminary comments to the City.
- ◆ Staff provided institutionalized and non-institutionalized group quarter information to the City of Oshkosh (*Winnebago County*) using the American Community Survey.
- ◆ Staff completed a request from United Way for county population estimates using the 1980-2010 Census and 2011 DOA population estimates.

Housing Coordination & Education

Regional Significance: Since 1998, East Central staff has served as a resource for addressing housing issues within the region by providing housing related data, identifying and discussing housing needs and potential solutions to those needs with communities. Staff also meet with supporting organizations, assist organizations with grant applications, and serve on housing related boards and committees. Staff also produce reports and fact sheets to help address or meet housing needs within the region. The intent of this program is to assist local housing authorities with strategic plans, facilitate the development of local comprehensive plans, and provide assistance and guidance to local governments, developers and other entities as they address housing issues.

Regional Projects and Activities:

- ◇ Participation in the Fox Cities Housing Coalition (FCHC) (*Calumet, Outagamie and Winnebago Counties*). The mission statement of the FCHC is “to ensure that all people in the Fox Cities have decent affordable housing”. As part of this participation staff:
 - ◆ attended monthly meetings of the FCHC;
 - ◆ attended monthly meetings of the Marketing/Communications Committee.
- ◇ Staff actively participated in the Fox Cities Workforce Housing Task Force, a task force organized under ESTHER (*Outagamie County*). During 2012, the taskforce focused on the following project:
 - ◆ Developed and held a Foreclosure Prevention Clinic in October 2012 (*Outagamie, Calumet, Winnebago, Waushara and Waupaca Counties*).
- ◇ The Commission staff attended and actively participated in a number of workshops and



Townhouse development, City of Oshkosh.

conferences in order to keep informed on housing issues and opportunities, as well as to collaborate on broader project initiatives:

- ◆ Staff attended the WI American Planning Association – Spring 2012 conference.
 - ◆ Staff attended “The Value of New Housing in Local Communities” event hosted by Valley Home Builders.
- ◇ Staff attended monthly meetings of the Winnebago Land Housing Coalition (WHC). The WHC was formed to maximize resources to identify and address affordable housing needs in the Oshkosh Urban Area (*Winnebago County*).
 - ◇ Staff attended the Grand Opening for Riverwalk Place, a new Appleton housing development that is operated and managed by the Appleton Housing Authority.
 - ◇ Staff attended a Fair Housing Focus Group to discuss the impediments to fair housing in the City of Oshkosh.

Local Assistance Projects & Activities:

- ◇ Staff reviewed and commented on the housing chapter for the City of Kaukauna comprehensive plan (*Outagamie County*).

Environmental Management Planning Program

Environmental Coordination, Education, and Technical Assistance

Regional Significance: East Central's communities and counties are impacted by many environmental policy decisions that are made by broader units of government. These policies, projects and programs are determined or influenced by the region's various stakeholder groups. East Central's involvement and participation in various agency and private-sector sponsored meetings, events, and initiatives is deemed a critical activity for several reasons: 1) It allows staff to keep informed on issues and projects, and relay information to various communities; 2) It gives communities in the region an objective voice on issues and projects that it may not have sufficient time and/or resources to participate in; and 3) It helps to achieve coordination among entities for projects that are multi-jurisdictional in nature.

Regional Projects and Activities:

- ◇ Staff actively participated on the State Geologic Mapping Advisory Committee to support future mapping projects for East Central's region.
- ◇ Staff attended and participated in regular meetings of the Lakeshore Natural Resource Partnership Board of Directors.
- ◇ Staff participated in the Lake Michigan Watershed Academy's (LMWA) fall meeting and the Lake Michigan Forum Executive Committee.
- ◇ Staff facilitated the delivery of *Fond du Lac County* groundwater flow/divide information to WisDOT consultants for use in the STH 23 expansion project analysis.
- ◇ Staff met with WDNR and paper industry representatives to explore needs and roles for the implementation of the Upper and Lower Fox River TMDL (Total Maximum Daily Load) which addresses phosphorus contributions to the

system from portions of *Calumet* and *Outagamie Counties*.

- ◇ Commission staff attended and participated in a number of training and development events which assisted in providing up-to-date knowledge and expertise on a variety of subjects pertaining to the management of environmental resources:
 - ◆ Lake Michigan Academy Fall meeting;
 - ◆ Nature Conservation Club's Biodiversity Conservation Strategy Survey;
 - ◆ US Geologic Survey SPARROW Model for the regional interpretation of water-quality webinar;
 - ◆ "Great Lakes Restoration Initiative Request for Applications" webinar;
 - ◆ "Value of the Great Lakes Water" webinar;
 - ◆ Lake Leaders Institute's Crew 9 Training Seminars;
 - ◆ U.S. Army Corps of Engineers teleconference on the Lake Michigan-Huron and Lake Superior low lake levels;
 - ◆ National Highway Institute's "How to Integrate Natural Environmental Plans" webinar;
 - ◆ Lake Michigan Stakeholders meetings;
 - ◆ Fox-Wolf Watershed Alliance Storm Water Conference;
 - ◆ Lake Michigan Watershed Academy meeting; and
 - ◆ Lake Michigan Watershed Academy's monthly webinar and meetings.

Local Assistance Projects & Activities:

- ◇ Staff provided proposed ordinance updates to the *City of Waupaca's Storm Water Ordinance*.
- ◇ Staff worked with the Town of Greenville's (*Outagamie County*) Land Stewardship

Committee to complete the development of a formal Land Stewardship Strategy which encompasses many aspects of agricultural and natural resource protection.

- ◇ Staff provided a listing of historical reports on surface water to City of Appleton storm water staff.
- ◇ Staff attended regular meetings of the **Waushara County** Cooperating Agencies to share information about environmental planning activities.

West Winnebago Pool Lakes Aquatic Invasive Species (AIS) Coordination Program

- ◇ In 2011, the Commission was awarded a three-year Aquatic Invasive Species (AIS) Coordination Grant for the West Winnebago Pool Lakes (**Outagamie, Winnebago, Waushara, and Waupaca Counties**). This effective regional program has many facets and has resulted in significant ‘on the ground’ outreach to our elected officials, citizens and students. The following major activities were conducted in 2012 for the AIS program:
 - ◆ Staff worked with the Village of Little Chute (**Outagamie County**) to remove and treat a large stand of Japanese knotweed within a Village right-of-way.



- ◆ Staff attended the Heart of the Valley Chamber of Commerce meeting to discuss the Fox River Navigational System Authority’s progress and future plans.
- ◆ Staff designed a Purple Loosestrife (PL) exhibit and beetle rearing station at the **Winnebago County** Parks’ Coughlin Nature Area.
- ◆ Staff presented with the WDNR at the Fox-Wolf Watershed Alliance Conference on AIS control within highway right-of-ways to the region’s municipal elected officials and public works personnel.
- ◆ Staff discussed the challenges and opportunities of the draft *Lower Wisconsin River AIS Strategic Plan* with the River Alliance.

- ◇ Staff coordinated a system-wide network of AIS Partners to accomplish the following:
 - ◆ Staff participated in an AIS patrol ride along with the **Winnebago County** Waterguard.
 - ◆ Staff met with the **Outagamie County** Restorative Justice program staff to coordinate supervised volunteer opportunities for participants.
 - ◆ Staff participated in the Lake Winnebago AIS Group Check.
 - ◆ Staff met with several area bait retailers to re-stock AIS outreach materials as part of the State’s Bait Store Outreach Initiative follow up.
 - ◆ Staff participated in the Winnebago Lakes Council Annual Meeting.
 - ◆ Staff presented AIS educational outreach to the Butte des Morts Conservation Club and discussed Clean Boats, Clean Waters (CBCW) and early detection monitoring volunteer opportunities and trainings.
 - ◆ Staff presented AIS educational outreach to the Winnebago Conservation Club and discussed

- CBCW and early detection monitoring volunteer opportunities and trainings.
- ◆ Staff discussed the possibility of adding an AIS element to the “Big Fish 365” Television Series.
 - ◆ Staff met with the Oshkosh West Woods and Water Club to discuss AIS volunteer opportunities and potential projects.
 - ◆ Staff presented AIS materials to the UW-Oshkosh Environmental Studies students.
 - ◆ Staff presented to the Winneconne High School’s Aquascience and Future Farmers of America students to discuss AIS threats and potential aquatic vegetation composting opportunities.
 - ◆ Staff provided prohibited and restricted plant outreach materials to the *Outagamie County* Master Gardener Association for the Garden Expectations Conference.
 - ◆ Staff presented AIS threats and control steps at the Tri-County Power Boat Alliance spring meeting.
- ◇ Staff assisted the UW-Oshkosh Clean Boats, Clean Waters program by:
- ◆ assisting Shannon Davis-Foust with various preparations for the 2012 CBCW program;
 - ◆ assisting in the UW-Oshkosh Clean Boats, Clean Waters Training session;
 - ◆ participating in several UW-Oshkosh CBCW weekly planning meetings;
 - ◆ assisting the UW-Oshkosh CBCW inspectors throughout the 2012 boating season;
 - ◆ preparing Winnebago Pool Lake boat landing maps for the 2012 UW-Oshkosh CBCW Interns;
 - ◆ participating in and submitting data to the 2012 CBCW Observational Study;
 - ◆ Meeting with three potential volunteers to complete CBCW’s inspections on Lake Poygan and the Wolf River;
 - ◆ presenting AIS educational outreach and providing a kayak decontamination
- demonstration at the Fox-Wisconsin Heritage Parkway’s Eco-Heritage paddle event. Paddlers were able to decontaminate their equipment after the Wisconsin River paddle on Saturday before continuing onto the Upper Fox River on Sunday;
- ◆ providing AIS outreach materials to the UW-Oshkosh CBCW interns for the Mills Fleet Farm Kids event and the Menominee Park (City of Oshkosh) Kids Event;
 - ◆ participating in the State’s trial CBCW Observational Study at several Lake Winnebago boat landings;
 - ◆ participating in several UW-Oshkosh CBCW weekly planning meetings;
 - ◆ assisting the UW-Oshkosh CBCW interns throughout the 2012 boating season; and
 - ◆ participating in the UW-Oshkosh CBCW 2012 review and 2013 planning meeting.
- ◇ Staff actively participated in the Citizen Lake Monitoring Program to:
- ◆ work with the *Fond du Lac County* AISC and a rush Lake property owner to tour Rush Lake and release purple loosestrife bio-control beetles;
 - ◆ discuss possible Citizen Lake Monitoring trainings with the Butte des Morts Conservation Club, Winnebago Conservation Club and the Tri-County Powerboat Alliance; and
 - ◆ train two AIS monitoring volunteers to monitor for AIS in the Pages Slough area at the mouth of the Wolf River and Lake Poygan.
- ◇ Staff provided AIS grant mentorship and coordination. A number of concerned property owners were consulted in 2012, however AIS grant applications or removal projects did not materialize.
- ◆ Staff assisted the *Outagamie County* PL bio-control cooperators in collecting

- PL plants, potting plants and assisted in the first bio-control site beetle release.
 - ◆ Staff continued to meet with Lake Winnebago property owners to discuss management options for Eurasian Water Milfoil within the property's navigational channel.
 - Staff worked cooperatively with the City of Menasha and **Winnebago County** to develop a shoreline restoration plan.
- ◇ Staff participated in the following AIS educational outreach events:
 - ◆ Wolf River Walleye Club's Ice Breakers Sports Show
 - ◆ Mills Fleet Farm Spring Fishing Expo Shows
 - ◆ Project Einstein Science Expo
 - ◆ Fox-Wisconsin Heritage Parkway's Eco-Heritage Paddle
 - ◆ Milwaukee Journal Sentinel 2012 Sports Show
 - ◆ Fort Fremont Marine Walleye Classic Tournament
 - ◆ Farm Technology Days
 - ◆ UW-Oshkosh Fall Career and Internship Fair
- ◇ Staff provided AIS educational outreach in the following ways:
 - ◆ participated as a guest speaker on The Score's (AM 1570) "Living the Outdoors" radio show discussing AIS status and threats to the Winnebago Pool Lakes;
 - ◆ met with and provided materials to the EAA Seaplane Base as part of the EAA's annual sea plane fly in event;
 - ◆ presented to approximately 2,000 students in 16 schools within the Winnebago Pool Lakes watershed as part of the AIS school-age program;
 - ◆ met with Fort Fremont Marine to discuss AIS best management practices when servicing boats;
 - ◆ met with Sea Grant, Kingdom Animalia Exotic Animal Rescue and an Oshkosh area pet store to discuss the Habitattitude program, the Pet Expo and a pet amnesty day; and
 - ◆ presented AIS materials in partnership with the National Professional Angler Association's Youth Anglers Seminars.
- ◇ Staff monitored the Upper Pool Lakes and the Lower Fox River public boat landings and public lands for AIS and completed the following activities:
 - ◆ continued to monitor the Upper Pool Lakes and Lake Winnebago's public boat landings and public lands for AIS;
 - ◆ coordinated with the WDNR to conduct water flea tows on Lake Poygan, Lake Winneconne, and Lake Butte des Morts;
 - ◆ continued to map large purple loosestrife, phragmites, and Japanese knotweed infestations throughout the region; and
 - ◆ AIS early detection monitoring along the shoreline and within the shallow water areas within the Arrow Head Creek, Clarks Point, Willow Creek, and the Poygan Marsh State Wildlife Area.
- ◇ Staff participated in various AIS research and policy initiatives including:
 - ◆ an Asian Carp Management and Control webinar; and
 - ◆ collecting faucet snails from Lake Winneconne for research projects at the UW-Trout Lake Station.

Niagara Escarpment Management



Regional Significance: Since 1998, East Central staff has been involved in building awareness and capacity for landscape level conservation planning along a unique cliff-like geologic feature that is international in scale: the Niagara Escarpment. The Niagara Escarpment traverses approximately 55 miles through both *Fond du Lac* and *Calumet Counties* within East

Central's region. The Escarpment corridor contains a wide variety of landscapes, habitats, and species many of which are unique only to this environment.

Concerns regarding the future use and protection of The Ledge (as it's known locally) are regional in scope, and similarly scaled planning efforts are critically needed. Housing development, wind turbine projects, non-metallic mining, recreational development, and groundwater quality are some of the major land use issues that need to be further evaluated and balanced with the conservation needs of the communities and region. Commission staff lead the following efforts with respect to this program in 2012:

- ◇ Staff supported and staffed two meetings of the Niagara Escarpment Resource Network's (NERN) Steering Committee. NERN became part of the broader non-profit entity, the Lakeshore Natural Resource Partnership (LNRP), in 2011. Commission staff also serve on LNRP's Board of Director's. NERN's focus is to work with local, county and state agencies, conservation organizations and citizens to develop and implement projects that build awareness of the escarpment, improve the level of planning along its corridor, and grow its economic base through enhanced geo-tourism activities. Staff currently serve as the Founding Co-Chair of the Network which conducts activities and projects that affect **Calumet** and **Fond du Lac Counties**, as well as other portions of the corridor.
- ◇ Staff continued the development and maintenance of a website (www.escarpmentnetwork.org) and an e-mail list associated with the Niagara Escarpment Resource Network (**Calumet and Fond du Lac Counties**).
- ◇ Staff prepared and sent regular (monthly) *Niagara Escarpment News & Notes* e-newsletters sharing information and news about the Niagara Escarpment and NERN activities.
- ◇ Staff prepared materials for and assisted with hosting one *Niagara Escarpment Greenway Plan*

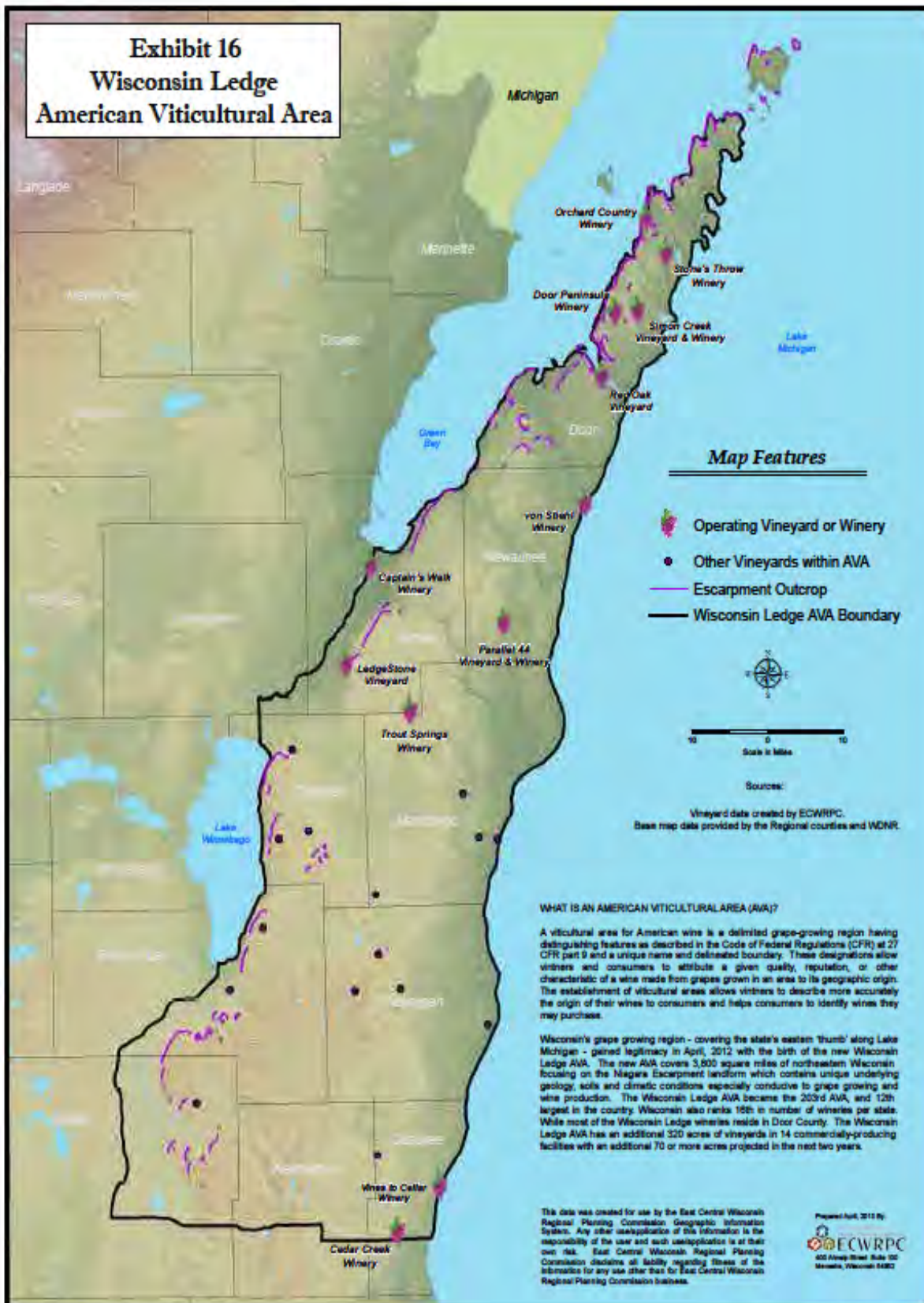


Lime kiln ruins along the Niagara Escarpment - High Cliff State Park, Calumet County.

Workshop in Door County. This project was started in 2010 with the hosting of several workshops. Additional mapping and text was written for the *Greenway Plan* which served as the first step to having a more formalized vision which blends conservation, green infrastructure, recreation and heritage tourism into a framework for local decision-making and economic development along its entire corridor. The project is supported by and is being provided assistance from other NERN partners and the National Park Service's Rivers and Trails Planning Program. This project will directly benefit **Calumet County** and **Fond du Lac County**.

- ◇ Staff participated in announcing the approval of the new Wisconsin Ledge American Viticultural Area (AVA) designation which was received in April 2012 (see map). Commission staff also met with NERN partners regarding the planning and coordination of the August 19th Wisconsin Ledge AVA Celebration in **Calumet County**.

Exhibit 16 Wisconsin Ledge American Viticultural Area



- ◇ Staff facilitated a group along the Niagara Escarpment corridor that is interested in developing a National Niagara Escarpment Interpretive Center facility, likely to be located in Door County.
- ◇ Provided support on the successful legislative change to include the Niagara Escarpment as a stewardship funding priority.
- ◇ Staff coordinated four Ledge Tour events during 2012 as part of NERN's educational focus. Over 75 persons attended these events at the following locations:
 - ◆ Valders Stone Quarry, **Manitowoc County**
 - ◆ Fonferek's Glen County Park, **Brown County**
- ◇ Staff attended one workforce development related meeting of NWTC's Viticulture (grape growing) & Oenology (wine-making) Program Advisory Committee which established the two new programs in 2012 as an outgrowth of the increasing expansion of local wineries and grape production.

NR-135 Non-Metallic Mining Reclamation

Regional Significance: This multi-county administration program is the direct result of a state-mandated rule (Chapter NR-135 Wis. Adm. Code) passed in December 2000. The overall goal of NR-135 is to provide a framework for statewide regulation of non-metallic mining reclamation. This was done by establishing uniform reclamation standards and requiring counties to adopt a reclamation plan ordinance capable of ensuring compliance with these standards. East Central, through a cooperative agreement signed in July 2001, administers these ordinances for five counties: **Calumet, Outagamie, Shawano, Waupaca and Winnebago**. As of December 31, 2012, a total of 208 sites had active permits. The program is self-funded by operators and is an excellent example of regional cooperation and staff's knowledge in reclamation

Exhibit 16 - NR-135 Permit Summary, 2012

County	Total Sites Permitted	Total Acres Active	Total Acres Reclaimed in 2012	Total Acres Reclaimed Since 2001
Calumet	20	423	0	26
Outagamie	49	1306	27	114
Shawano	54	640	3	70
Waupaca	45	585	17	134
Winnebago	40	807	8	58
Totals	208	3,761	55	402

Source: ECWRPC, 2012

planning, policy, and regulation has resulted in a consistent, efficient, cost-effective and service oriented program.

Regional Projects and Activities:

- ◇ Staff processed two "new mine" site reclamation permit applications (**Waupaca and Shawano Counties**).
- ◇ Staff conducted permit compliance inspections on 80% of all permitted mine sites.
- ◇ Staff certified the reclamation of 55 acres of land, of which six of these sites received a certificate of completion for final reclamation activities.
- ◇ Staff prepared and conducted the annual operator and WDNR reporting process and updated the county planning and zoning committees on the program status.
- ◇ Staff continued the development and maintenance of the reclamation permit database and associated GIS mapping of mine sites.

- ◇ Staff prepared and hosted a Reclamation Authority roundtable meeting on issues and questions that come up in the process of administering the NR-135 reclamation program.

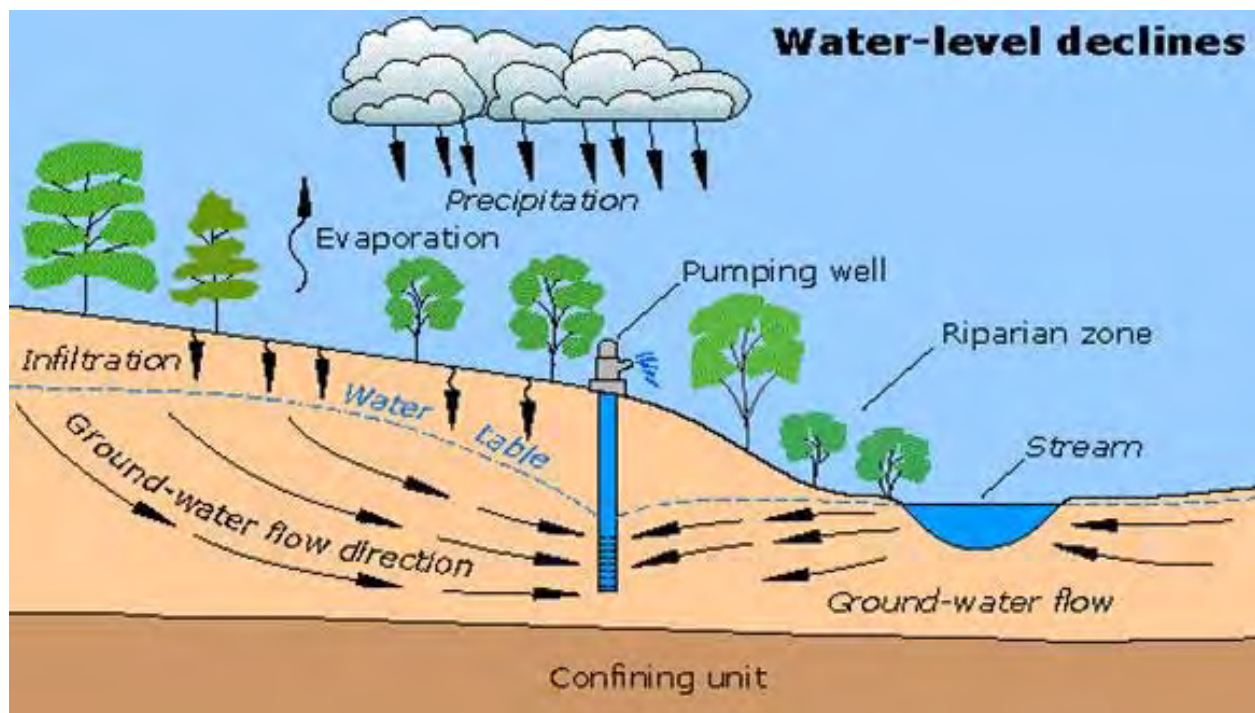
Groundwater Management Issues

Regional Significance: East Central has been involved in planning activities for groundwater quality and quantity issues in the Fox Cities area since 1996, when it assisted in coordinating several aquifer research reports prepared by the U.S. Geological Survey. These studies concluded that the level of the St. Peter sandstone aquifer (the major aquifer used for high capacity wells) is declining at a rate of over two feet per year due to the effects of regional growth, development patterns, and water consumption. This draw-down has caused concerns with respect to the contamination of wells from naturally occurring arsenic. In 2012, the Commission continued to address the Fox Cities' long-term needs for potable water supplies:

- ◇ Staff received and distributed reports and information pertaining to the Phase I

Groundwater Recharge Mapping project done by the Wisconsin Geologic & National History Survey (WGNHS) for **Calumet, Winnebago** and **Outagamie Counties**. Additionally, staff prepared and printed an educational poster/brochure regarding groundwater resources and the importance of using Low Impact Development (LID) techniques.

- ◇ The Commission worked with WGNHS staff to initiate phase II of the groundwater recharge modeling which will encompass **Waushara, Waupaca, Shawano** and **Menominee Counties** with completion expected in mid-2013.
- ◇ Staff finalized the Lake Michigan Watershed Academy funded *Protecting Groundwater Recharge and Aquifer Quality Municipal Guide*. East Central developed this municipal guide to ignite the interest among the region's elected officials to start seeing storm water as a vital part of our groundwater system versus our common view of a volume control nuisance.
- ◇ **Groundwater Workshop:** East Central hosted a Groundwater Workshop in July that educated the region's decision makers on a variety of topics



Typical ground water system and interactions.

regarding the region's groundwater resources.

Workshop participants discussed:

- ◆ results of the Groundwater Recharge Model for *Calumet, Outagamie*, and *Winnebago Counties* by the Wisconsin Geologic & Natural History Survey;
- ◆ contaminant issues related to karst formations in heavy agricultural land spreading areas;
- ◆ how to make land use decisions and implement best management practices that protect or enhance groundwater recharge;
- ◆ what the State is doing to protect and manage the region's groundwater resources; and
- ◆ how to utilize East Central's *Protecting Groundwater Recharge and Aquifer Quality Municipal Guide*.

Local Assistance Planning Program

Regional & Local Plan Coordination

Regional Significance: The Commission provides a number of services and activities related to current planning issues within the region. This is done mainly to assist local units of government in developing local plans and planning policies, improve decision making capabilities and foster more effective capabilities to address community growth and development concerns. This in turn facilitates the Commission's main mechanism to implement the *2008 Regional Comprehensive Plan* by providing assistance and advice in how communities can use the plan's goals, objectives, policies, and recommendations. These activities further improve the visibility of the Commission within the region.

Local Assistance Program

Requests for local assistance to member entities fall into two general categories, technical assistance and contract services. Requests that qualify under the technical assistance work element are those that are estimated to require three to five person-days of staff resources to complete. Member entities are not charged for these types of requests and projects are submitted to the Commission for consideration and are subsequently ranked and selected based on budget and staffing availability. When planning-related services require a greater commitment of staff resources and time than can be provided under the work element, East Central will typically enter into a contract with the governmental entity. This must be approved by the Commission at one of its quarterly meetings.

Technical Assistance - East Central staff respond to numerous requests for day-to-day planning advice and assistance that qualify for assistance under the work element.

These projects cover a wide range of planning-related activities including requests for data and other materials related to demographics, economic development, traffic, land use and other aspects of planning, advice on specific planning and zoning issues, special surveys and studies, and planning assistance for parks and other recreational facilities, residential developments, downtown areas, industrial parks, and certain transportation improvements. Only those local assistance projects which do not fit any of the other planning program categories are listed here. Please refer to the other sections of this document to see descriptions of other projects.

Local Assistance Projects and Activities:

- ◇ Staff continued to work with **Waupaca County** to address the development of livestock siting regulations.
- ◇ Staff assisted the Village of Kimberly (**Outagamie County**) in leading a three-part neighborhood workshop series which provided community members with an opportunity to discuss topics related to the former NewPage Mill property and share their vision for the future of this site and its surrounding neighborhood. After compiling, organizing, and interpreting the public input received, staff prepared the *Former NewPage Mill Redevelopment Strategy*. This report summarizes the workshops, highlights key results, and provides recommendations for moving forward.
- ◇ In 2010 and 2011, the Commission qualified for "preferred sustainability status" through the score it received on the HUD Sustainable Communities Regional Planning Grant Program. Through the Commission's commitment to advance sustainability in the region, it is able to grant two bonus points to organizations submitting specific grants. In 2012, and the first quarter of 2013, the Commission was able to provide two bonus points to three organizations (**Winnebago, Outagamie and Calumet Counties**).

- ◇ Staff assisted the Village of Winneconne (**Winnebago County**) in obtaining information for a grant to develop ADA Compliant Fishing Piers in the Village.

Contract Services - Contracts with counties and member communities for more extensive planning services are an important component of East Central's overall planning activities. East Central has made a strong commitment to contract with local entities for comprehensive planning and other services. Contract service projects are listed in some of the other sections of this document and those that do not fit with any of the previous program areas are contained below:

- ◇ Staff continued to administer a Community Development Block Grant – Emergency Assistance Project (CDGB-EAP) grant for the City of Oshkosh (**Winnebago County**) - for the development of a regional storm water detention basin that will protect a low-to-moderate income neighborhood that was seriously flooded in 2008 and previous years.
- ◇ Staff completed the City of Omro's (**Winnebago County**) EDA Industrial Park Expansion Grant which was received in 2010 with East Central's assistance.
- ◇ Staff provided interim planning services for the City of Waupaca (**Waupaca County**). This work involved:
 - ◆ preparing for and staffing the city's Plan Commission on a monthly basis;
 - ◆ finalizing staff reports and other Plan Commission documents;
 - ◆ researching planning issues including zoning ordinances and design standards;
 - ◆ working with staff to develop the Interchange Zone District for the U.S. Highway 10/State Highway 22/54 Interchange;
 - ◆ responding to elected official's inquiries; and
 - ◆ working with elected officials, staff, state agencies, developers and residents to complete planning projects.

- ◇ Staff developed a *Long-Range Transportation Plan* and *Land Use Plan* for the Menominee Indian Tribe of Wisconsin (**Menominee and Shawano Counties**). The *Long-Range Transportation Plan* was adopted by Menominee Tribal Legislature in March of 2013.



Village of Kimberly "Neighborhood Visioning Workshop" for the former NewPage Mill site, August 2012.

Geographic Information System Program

Regional Significance: Beginning in 1990, East Central began completing all mapping projects in digital format using Geographic Information System (GIS) software. The benefits of this technology allow East Central to analyze and compile many forms of spatial data to aid in mapping activities and planning decisions.

To facilitate the Commission's mapping efforts, a Regional Land Information System (RLIS) was developed and administered. The RLIS consists of a set of standards that applies to each data element such as map projection coordinates, data accuracy, source documentation, digital data filing and storage system, along with others. A major benefit of the RLIS is that data is collected and standardized across all units of government. An example of this is the Commission's year 2000 existing land use inventory project. The land use data was collected by the Commission in a focused and cost-effective manner and has since been utilized by many local and county entities for their planning activities. This project, conducted at this scale, directly reduced costs, duplication of efforts, and increased efficiencies with shared and uniform datasets. In terms of updating, GIS interns were hired to complete the land use mapping utilizing 2010 aerial photography.

The Commission also provides for the coordination of data acquisition, distribution, and accuracy due to its ability to work across multiple units of government. With the introduction of improved GIS software, East Central began conversion of existing data into a new format in 2006 called the Geodatabase. This data conversion has continued through 2012. The new data format lets the GIS team utilize the existing GIS software to its full capacity. In addition to the numerous digital mapping projects noted earlier in this report, the following GIS mapping-only activities were also worked on in 2012:

Regional Projects & Activities:

- ◇ Staff attended the 2012 Wisconsin Land Information Association (WLIA) Annual Conference and the 2012 Fall Regional event to obtain current information on GIS technology, applications, and available resources. Staff developed GIS mapping displays for the WLIA's poster/map contest and received awards in different mapping categories for their efforts.
- ◇ Staff attended regional and county GIS user group meetings to coordinate and support local and regional mapping activities including:
 - ◆ the **Winnebago County** GIS User Group (WINGS) Committee;
 - ◆ the Fox Cities GIS Users Group;
 - ◆ the GIS Day event for UW Fox Valley;
 - ◆ the ESRI Wisconsin User Group (EWUG); and
 - ◆ various ESRI training seminars and webinars.
- ◇ Staff served on the State of Wisconsin Geographic Information Coordination Council (WIGICC) as the Vice-Chair to the Executive Committee and as the Regional Planning Commission Representative.
- ◇ Staff served on the Wisconsin Land Information Association Board (WLIA) as the Co-Chair to the Communications Committee.
- ◇ GIS staff maintained a database tracking system for all digital data acquisition and distribution activities. The archived GIS data is utilized internally by planning and technical staff for mapping in ECWRPC's programs.
- ◇ GIS staff partnered with the Glacierland Resource Conservation & Development, Inc. (Glacierland RC&D) to create mapping graphics for use in their *2012 Eastern Wisconsin Farm Fresh Atlas*. This project includes the counties of **Calumet**, **Fond du Lac**, **Menominee**,

Outagamie, Shawano, Waupaca, Waushara, and Winnebago.

- ◇ Staff updated transit maps for the City of Oshkosh (GO Transit) (***Winnebago County***).
- ◇ At the request of the City of Menasha, (***Winnebago County***) staff updated the trestle trail kiosk maps for the city side of the Friendship Trail.
- ◇ In conjunction with the NR-135 program, GIS staff provided database training to create mapping layouts for mining sites for the five counties in the program (***Calumet, Winnebago, Outagamie, Shawano, and Waupaca Counties***).
- ◇ Staff developed mapping layouts for the *Fox-Wisconsin Heritage Parkway Action Plan* to aid in the national parkway designation process and assisted in the development of portage trail signage.

- ◇ At the request of the Fox River Navigational Systems Authority (FRNSA), staff provided marketing material for the Fox Locks sites (***Outagamie and Winnebago Counties***).
- ◇ Staff worked on updating functional classification for Fond du Lac, Fox Cities, and Oshkosh Urbanized Areas.
- ◇ Staff worked on updating mapping for the 2013 Fond du Lac TIP, Fox Cities TIP and the Oshkosh TIP (***Calumet, Fond du Lac, Outagamie and Winnebago Counties***).
- ◇ Staff continues to gather data for the NE Wisconsin Travel Demand Model.
- ◇ Staff worked on mapping a target area for the regional park location.
- ◇ Staff created posters for the check awards recipients of the NEWREP Business Plan Contest.



Town of Winneconne Sign Inventory, 2012 - Support Number 92

- ◇ Staff worked on gathering and integrating American Communities Survey Data with ECWRPC datasets for easier access by way of ArcGIS, ArcExplorer Online, and by iOS.
- ◇ Staff worked on updating maps for the Wisconsin Ledge AVA.
- ◇ Staff created a groundwater recharge brochure for ***Calumet, Outagamie, and Winnebago Counties***.
- ◇ Staff created and printed 2010 Census Urbanized Areas and Urban Clusters maps within the region.
- ◇ Staff worked on template and graphics setup of the Commission's e-newsletters in Constant Contact to provide more information on planning activities and completed articles for the GIS e-newsletter as well as added e-mail contacts to the Constant Contact site.
- ◇ Staff created a geodatabase for aquatic invasive species mapping.

Local Assistance Projects & Activities

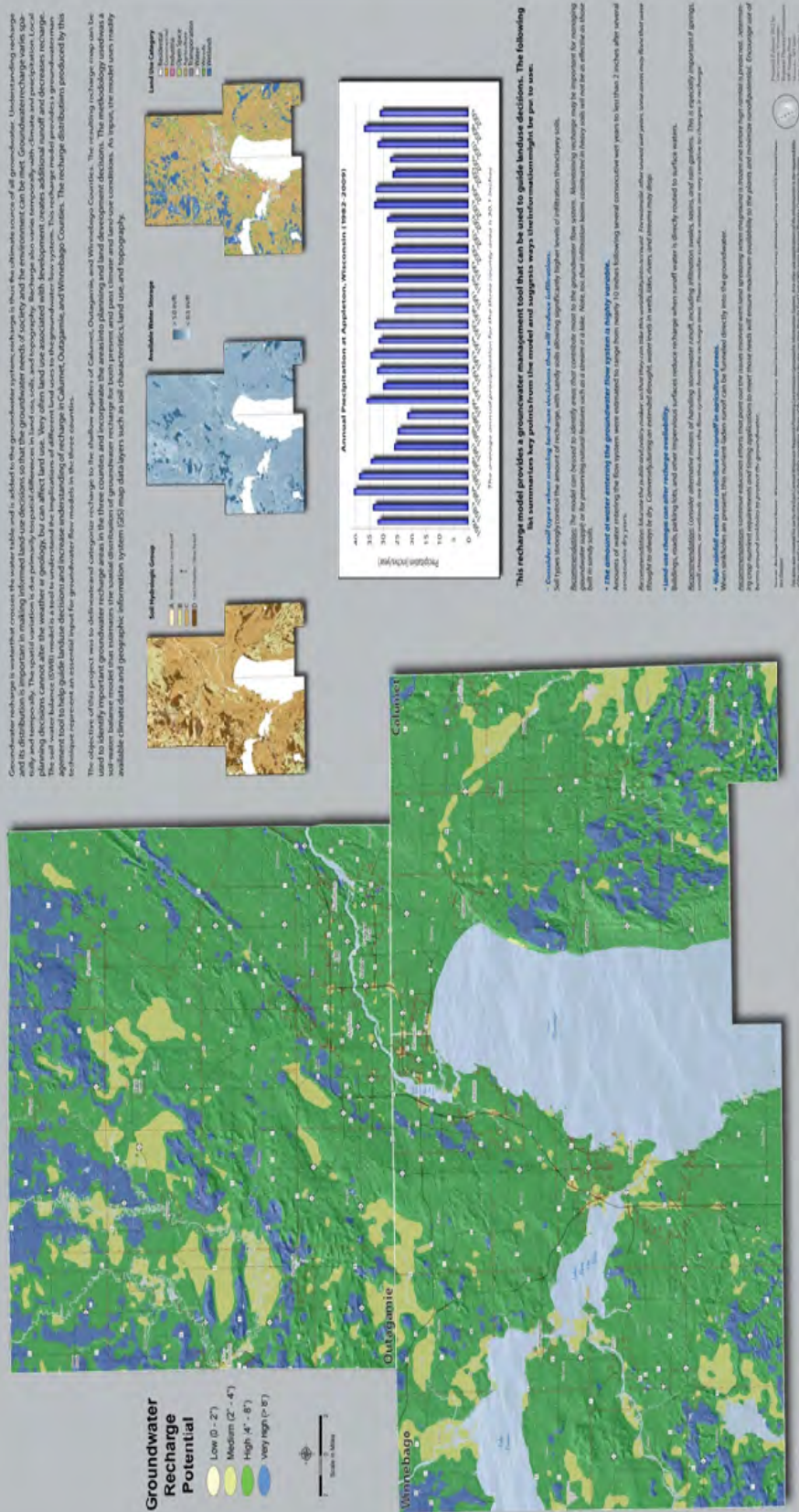
The GIS department staff provided project-based and technical support to entities on the following efforts:

- ◇ Staff worked on mapping and graphics as well as finalizing the printing materials for the County Highway JJ Corridor *Road Safety Audit (Outagamie County)*. Staff also completed a *CTH JJ Corridor Street Sign Inventory* map book.
- ◇ Staff prepared a pre-planning base map for **Calumet County's** highway history technical assistance project.
- ◇ Staff prepared maps for the City of Brillion's open space plan update (**Calumet County**).
- ◇ Staff created a map book utilizing python scripting to automatically place the correct images for the data driven pages and collected data via GPS for the Town of Friendship (*Fond du Lac County*), Towns of Black Wolf, Vinland, and Winneconne (**Winnebago County**) sign inventory projects.
- ◇ Staff worked on MPO Fox Cities/Oshkosh Bike and Pedestrian Mapping (**Calumet, Outagamie, and Winnebago Counties**).
- ◇ Staff worked on updating a demographic profile for the Town of Buchanan (**Outagamie County**).
- ◇ Staff worked on the mapping for **Waushara County's** Ice Age Trailway Protection Strategy through the NPS.
- ◇ Staff provided mapping using **Menominee County** and tribal data as part of the new *Long Range Transportation and Land Use Plan* contract with the Menominee Indian Tribe.
- ◇ Staff created industrial park mapping for the Village of Hortonville (**Outagamie County**).
- ◇ Staff assisted **Calumet County** with boat launch maps for a grant submitted to the WDNR.
- ◇ Staff conducted a land use inventory update for the Fond du Lac, Fox Cities, and Oshkosh MPO

Areas (**Calumet, Fond du Lac, Outagamie, and Winnebago Counties**).

- ◇ Staff created maps of Pavement Surface and Evaluation Ratings (PASER) for the City of Fond du Lac (*Fond du Lac County*).
- ◇ At the request of **Menominee County**, GIS staff assisted with a data export to the WDNR of gypsy moth spray areas in the county.
- ◇ GIS staff actively participated as a voting member on the **Calumet County** and the **Winnebago County** Land Information Councils and as an ad hoc member on the **Shawano County, Waupaca County, and Waushara County** Land Information Councils to provide technical advice and guidance.
- ◇ Staff provided grant assistance for the Regional Sustainability HUD Grant and the City of Oshkosh (**Winnebago County**) Community Development Block (CDBG) Grant .
- ◇ Staff worked on creating a new address locator from the 911 data obtained from Digital Data Technologies for the Menominee Indian Tribe of Wisconsin (MITW) for a more accurate geocoding of data.

Mean Annual Groundwater Recharge Potential for Calumet, Outagamie, and Winnebago Counties, Wisconsin (2011)



Estimated Annual Recharge Potential Groundwater.

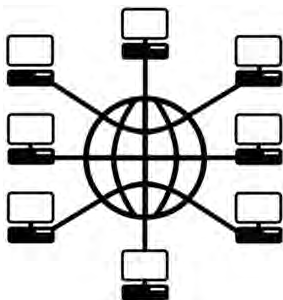
Information Technology Program

Information System Management

Regional Significance: Although many of the Commission's information technology (IT) functions are unseen, they are an important part of the support provided for the Commission's daily administrative, GIS, and planning functions. Day to day tasks associated with personal computer and network server use required maintenance and upgrades. Software and license purchases and support, as well as data storage and backup needs were also addressed to support the Commission's efforts.

Regional Projects & Activities:

- ◇ Staff continually works on updating the Commission's website: www.eastcentralrpc.org.
- ◇ Staff maintained a website for the Regional Safe Routes to School program: www.eastcentralsrts.org.
- ◇ Staff created two new MPO websites:
 - ◆ <http://fcompo.org/>
 - ◆ <http://fdlmpo.org/>
- ◇ Staff maintained the Making the Ride Happen website (www.eastcentralrpc.org/MakingTheRideHappen) and the Northeast Wisconsin Regional Access to Transportation website (www.newrat.org).
- ◇ Staff attended the Governmental Information Processing Association of Wisconsin (GIPAW) Annual Conference.



Regional Aerial Photography and Imaging

Regional Significance: The Commission has provided various services to member units of government for technical projects which cross multiple jurisdictions. These projects often involve additional coordination activities with state or federal agencies as well as staff attendance at various workshops and conferences so that information can be shared with local governmental units. These projects often reap benefits to the units of government in terms of cost savings, efficiencies, and data consistency.

Regional Projects & Activities:

- ◇ Staff participated in the Wisconsin Orthophotography Workshop in Neenah.
- ◇ Staff downloaded 2010 NAIP Multispectral Imagery for the region and processed the data into ECWRPC standards.
- ◇ Staff worked on (WROC) Wisconsin Regional Orthophotography Consortium vendor selection process.

Local Assistance Projects & Activities:

- ◇ Staff worked on extracting tree canopy data from LiDAR and multispectral imagery for the City of New Holstein (*Calumet County*).
- ◇ Staff rectified 1981 *Outagamie County* scanned imagery.
- ◇ Staff mosaicked and georeferenced historical scanned imagery (navigational charts) for the FRNSA (*Outagamie and Winnebago Counties*).

Commission Administration

The Commission performs a multitude of routine and periodic administrative functions in its daily operations. Two management and three administrative positions serve the Commission's 16 other staff as well as the needs of the 28 Commissioners and the general public. In general, these functions can be categorized as follows and all require significant investments in time:

- ◇ Financial management and recordkeeping, including the preparation for an annual audit per federal and state requirements as a grant recipient.
- ◇ The provision and administration of human resources functions for the Commission's 21 staff.
- ◇ Ensuring compliance with Title VI Non-Discrimination requirements as a recipient of federal funding, including the preparation of the annual *Affirmative Action Plan* document.
- ◇ Customer service and agency/entity referrals for members of the public as well as the communities which comprise the region.
- ◇ Responses to information about the general nature of the Commission including membership concerns and interests, basic programs and services.
- ◇ Attendance at key periodic events to better communicate with professionals and colleagues, such as :
 - ◆ the Annual Wisconsin Counties Association (WCA) Conference;
 - ◆ Wisconsin Chapter of APA (WAPA) Statewide Conference; and
 - ◆ National American Planning Association (APA) Conference.

Association of Wisconsin RPCs:

The Association of Wisconsin Regional Planning Commissions (AWRPC) was created to address items of mutual concern among the regional planning commissions. The group is formed under a formal set of by-laws with a rotating Chair. The group works closely with the Wisconsin Counties Association and other statewide associations and agencies to advocate for regional planning and to monitor and take positions on proposed state legislation and planning related programs in an effort to better assist its member counties and communities. East Central engaged with the Association in the following activities:

- ◇ East Central serves as the Secretary/Treasurer of the Association of Wisconsin Regional Planning Commissions (AWRPC) and as such, manages all financial aspects for the organization. Management staff also attended three of the four meetings held during 2012.
- ◇ The Commission's Controller coordinated and attended two workshops sponsored by the AWRPC to discuss best practices and policies for financial reporting and bookkeeping procedures amongst the various RPCs.
- ◇ AWRPC members hosted a Strategic Planning session in cooperation with the Commission Chairs to lay out a vision and long term goals for the organization.
- ◇ Attended a Great Lakes Inter-Tribal Council Meeting in Green Bay along with all other RPC Directors to discuss issues regarding RPC interactions and collaboration opportunities with Wisconsin tribal entities.
- ◇ East Central and South West RPCs specifically presented information about AWRPC and their respective regional program successes to the Wisconsin Counties Association (WCA) Board of Directors.

Other Activities:

- ◇ Sponsorship and coordination of the March 1, 2012 Wisconsin Chapter American Planning Association (WAPA) conference held in Oshkosh (*Winnebago County*).
- ◇ Staff worked with the Steering Committee and a hired consultant to complete a compensation study during 2012. The last such study was completed in 2000.
- ◇ Work was completed on the development of a strategic plan document for the Commission's consideration in 2012.
- ◇ Prepared an updated set of personnel policies as well as consolidating and updating all remaining Commission policies and procedures.
- ◇ Staff worked with A2Z Design and the Steering Committee to evaluate and develop new brand and logo concepts.



Commissioner Meeting.

APPENDIX A – ECWRPC TECHNICAL ADVISORY COMMITTEES

TRANSPORTATION TECHNICAL ADVISORY COMMITTEE POOL

- ◆ Sandra Beaupre, Director, WisDOT, Bureau of Planning, Madison
- ◆ Jerry Bougie, Planner, Winnebago County
- ◆ Darryn Burich, Community Development Dept., Oshkosh
- ◆ Grant Bystol, Highway Commissioner, Shawano County
- ◆ Tom Dahlke, Highway Commissioner, Waushara County
- ◆ Allen Davis, Director of Community Development, City of Oshkosh
- ◆ George Dearborn, Director of Community Development, Town of Menasha
- ◆ Kathy Drews, WisDOT – Northeast Region
- ◆ Travis Parrish, Administrator, T. Harrison
- ◆ Al Geurts, Highway Commissioner, Outagamie County
- ◆ Lynn Gilles, Fond du Lac Transit
- ◆ Angela Gorall, Administrator/Clerk, Town of Buchanan
- ◆ Chris Haese, Director of Community Development, City of Neenah
- ◆ Matt Halada, WisDOT, Northeast Region
- ◆ Michael Hardy, City of Appleton
- ◆ Karen Harkness, Planning Director, City of Appleton
- ◆ Mike Hendrick, Planning Director, Outagamie County
- ◆ Julie Schmelzer, Planning Director, Calumet County
- ◆ Sean Hutchison, Clerk Administrator, Village of Combined Locks
- ◆ Robert Jakel, Director of Community Development, Kaukauna
- ◆ David Johnson, Assistant Planning Director, Outagamie County
- ◆ Gerry Kaiser, Public Works, Neenah
- ◆ Greg Keil, Director of Community Development, City of Menasha
- ◆ Chuck Kell, Administrator, Village of Little Chute
- ◆ Bob Kesler, Town of Harrison
- ◆ Mark Lahay, City of Appleton
- ◆ Marty Lenss, Manager, Outagamie County Airport
- ◆ James March, Administrator, Town of Grand Chute
- ◆ Thomas Marquardt, P.E., Dept. of Public Works, Town of Grand Chute
- ◆ Jill Michaelson, WisDOT – Northeast Region
- ◆ Peter Moll, Manager, Wittman Field, Oshkosh
- ◆ Mark Mommaerts, Town Planner, Town of Harrison
- ◆ John Nordbo, Urban Planning, WisDOT, Madison

- ◆ Mary Robb, WisDOT – Urban Planning
- ◆ Mike Ottery, Highway Commissioner, Calumet County
- ◆ David Patek, Director of Public Works, Oshkosh
- ◆ Alexis Kuklenski, Federal Highway Administration (FHWA)
- ◆ Mark Radtke, Director of Public Works, Menasha
- ◆ Donna Reed, Director of Planning, Federal Highway Administration (FHWA)
- ◆ Mark Rohloff, City Manager, Oshkosh
- ◆ Wayne Rollin, Director of Community Development, City of Fond du Lac
- ◆ Marisol Simon, Federal Highway Administration (FHWA)
- ◆ Mike Simon, McMahon & Associates
- ◆ Jordan Skiff, Director of Public Works, City of Fond du Lac
- ◆ Rick Stautz, Director of Public Works, City of Shawano
- ◆ Dean Steingraber, Highway Commissioner, Waupaca County
- ◆ Chris Strong, Manager, Oshkosh Transit System
- ◆ John Sundelius, Director of Public Works, City of Kaukauna
- ◆ Paula Van De Hey, Director of Public Works, City of Appleton
- ◆ Roy Van Gheem, Public Works Director, Little Chute
- ◆ Dave Vander Velden, Public Works, Village of Kimberly
- ◆ David Vickman, City of Oshkosh
- ◆ Ben M. Warrington, Highway Commissioner, Menominee County
- ◆ Deborah Wetter, Manager, Valley Transit
- ◆ Larry Wattering, Director of Public Works, City of Neenah
- ◆ Ernest Winters, Highway Commissioner, Winnebago County

TRANSPORTATION POLICY ADVISORY COMMITTEE POOL

Fox Cities Urbanized Area

- ◆ Bill Barribeau, Chairman, Calumet County
- ◆ Adam Boardman, Director, Bureau of Transit/Local Roads/Rails/Harbors, WisDOT
- ◆ Will Dorsey, Region Director, WisDOT Northeast Region
- ◆ Timothy Hanna, Mayor, City of Appleton
- ◆ Mark Harris, Winnebago County Executive
- ◆ Alexis Kuklenski, Federal Highway Administration (FHWA)
- ◆ Chuck Kuen, President, Village of Kimberly
- ◆ Randy Leiker, Chairman, Town of Greenville
- ◆ Bruce Matzke, Division Admin., Federal Highway Administration (FHWA)
- ◆ Mark McAndrews, Chairman, Town of Buchanan
- ◆ Dwight McComb, Federal Highway Administration (FHWA)
- ◆ Don Merkes, Mayor, City of Menasha

- ◆ Jill Michaelson, WisDOT – Northeast Region
- ◆ Tom Nelson, Outagamie County Executive
- ◆ John Neumeier, President, Village of Combined Locks
- ◆ Brad Rettler, Chairman, Town of Vandenbroek
- ◆ Eugene Rosin, Mayor, City of Kaukauna
- ◆ Chuck Rundquist, Chairman, Fox Cities Transit Commission
- ◆ George Scherck, Mayor, City of Neenah
- ◆ Bob Schmeichel, Chairman, Town of Neenah
- ◆ David Schowalter, Chairman, Town of Grand Chute
- ◆ Jeffrey Sturgell, Administrator, Town of Menasha
- ◆ Mike Vanden Berg, President, Village of Little Chute
- ◆ Dale Youngquist, Chairman, Town of Menasha

Oshkosh Urbanized Area

- ◆ Glen Barthels, Chairman, Town of Nekimi
- ◆ Sandra Beaupre, Director, WisDOT, Bureau of Planning, Madison
- ◆ Tim Blake, Chairman, Town of Algoma
- ◆ Jim Erdman, Chairman Town of Oshkosh
- ◆ Burk Tower, Mayor, City of Oshkosh
- ◆ Frank Frassetto, Chairman, Town of Black Wolf
- ◆ Matt Halada, WisDOT, Northeast Region
- ◆ Mark Harris, Winnebago County Executive
- ◆ Dwight McComb, Federal Highway Administration (FHWA)
- ◆ John Nordbo, Urban Planning, WisDOT, Madison
- ◆ Donna Reed, Director of Planning, Federal Highway Administration (FHWA)
- ◆ Mark Rohloff, City Manager, Oshkosh

Fond du Lac Urbanized Area (Commission serves as staff only)

Policy Board (Voting Members):

- ◆ Allen Buechel, Fond du Lac County (Chair)
- ◆ Wayne Rollin, City of Fond du Lac (Vice Chair)
- ◆ Matt Halada, WisDOT, Northeast Region
- ◆ Chuck Hornung, Administrator, Village of North Fond du Lac
- ◆ Jim Sable, Council President
- ◆ Joseph Moore, City Manager, City of Fond du Lac
- ◆ Tom Janke, Alternate, Fond du Lac County
- ◆ Rob Vande Zande, City of Fond du Lac
- ◆ James Pierquet, Town of Empire (rep. all towns)
- ◆ Jordan Skiff, City of Fond du Lac

(Non-Voting members)

- ◆ Curt Holman, Canadian National Railroad
- ◆ Alexis Kuklenski, Federal Highway Administration (FHWA)
- ◆ Dwight McComb, FHWA
- ◆ Jill Michaelson, WisDOT – Northeast Region
- ◆ Mary Robb, WisDOT, Central Office
- ◆ Walt Raith, ECWRPC

Technical Advisory Committee

- ◆ Kathy Drews, WisDOT, Northeast Region
- ◆ Lynn Gilles, City of Fond du Lac, FDLAT
- ◆ Jerry Guelig, Town of Taycheedah
- ◆ Matt Halada, WisDOT, Northeast Region
- ◆ Curt Holman, Canadian National Railroad
- ◆ Chuck Hornung, Administrator, Village of North Fond du Lac
- ◆ Tom Janke, Fond du Lac County Highway
- ◆ Norbert C. Koll, Town of Empire
- ◆ Harold Manske, Town of Fond du Lac
- ◆ Dwight McComb, FHWA
- ◆ Charles McCourt, Town of Friendship
- ◆ Mary Robb, WisDOT, Central Office
- ◆ Lee F. Perrizo, Fond du Lac County Airport
- ◆ James Pierquet, Town of Empire
- ◆ Wayne Rollin, City of Fond du Lac
- ◆ Jordan Skiff, City of Fond du Lac, Dept. Public Works
- ◆ Sam Tobias, Fond du Lac County
- ◆ Walt Raith, ECWRPC

2012 COMPREHENSIVE ECONOMIC DEVELOPMENT STRATEGY COMMITTEE

- ◆ Linda Bartelt, NEWERA
- ◆ Kim Biedermann, UW Business Success Center
- ◆ Lew Boyd, Menominee Nation Office of Economic Development
- ◆ Larry Burkhardt, Fox Cities Chamber of Commerce & Industry
- ◆ Naletta Burr, WEDC
- ◆ John Casper, Oshkosh Chamber of Commerce
- ◆ Ron Corn, Menominee County
- ◆ Allen Davis, City of Oshkosh
- ◆ George Dearborn, Town of Menasha
- ◆ Will Dippiesse, First Business Bank Northeast
- ◆ Jeff Forbes, WPPI Energy
- ◆ Jean Gliniecki, Waupaca County
- ◆ Angela Gorall, Town of Buchanan
- ◆ Lori Gosz, City of Brillion
- ◆ Tim Hanna, City of Appleton
- ◆ Karen Harkness, City of Appleton Community Development
- ◆ Elizabeth Hartman, CHAMCO
- ◆ Mike Hendrick, Outagamie County Planning Department
- ◆ Melissa Hunt, WEDC
- ◆ Jeff Hunter, Theda Care
- ◆ Meredith Jaeger, AeroInnovate
- ◆ Robert Jakel, City of Kaukauna

- ◆ Steve Jenkins, Fond du Lac County Economic Development Corporation
- ◆ Carol Karls, Wisconsin Public Service
- ◆ Greg Keil, City of Menasha
- ◆ Rob Kleman, Oshkosh Chamber of Commerce
- ◆ April Mielke, City of Neenah
- ◆ Bobbi Miller, Fox Valley Workforce Development Board
- ◆ Dena Mooney, Calumet County
- ◆ Jay Moynihan, Shawano County UW-Extension
- ◆ Jerry Murphy, New North, Inc
- ◆ Thomas Onofrey, Marquette County
- ◆ Amy Pietsch, FVTC Venture Center
- ◆ Jim Resick, Outagamie County UW-Extension
- ◆ Jeff Sachse, Department of Workforce Development, OEA
- ◆ Christine Schaefer, Valley Homebuilders Associate (VHBA)
- ◆ Steve Sengstock, Shawano County Economic Progress Inc.
- ◆ Alan Shute, Green Lake County
- ◆ Dave Theil, Waupaca County Economic Development Corporation
- ◆ Henry Veleker, City of Waupaca
- ◆ Kevin Vonck, Town of Grand Chute
- ◆ Dale Walker, Fox Valley Technical College
- ◆ Bill Wheeler, Tri-County Regional Economic Development Corporation
- ◆ Lynne Wichmann, Waushara County Economic Development Corporation
- ◆ John Winkler, Wisconsin Small Business Development Center Network (SBDC)

APPENDIX B - NEW PUBLICATIONS

Many of these documents are available in Adobe Acrobat (.pdf) versions on our website

www.eastcentralrpc.org.

Administrative Documents

2012 AFFIRMATIVE ACTION PROGRAM, January 2012. Analyzes staff, personnel policies, and practices of East Central and outlines goals for achieving equal employment opportunity in the agency.

2012 ANNUAL WORK PROGRAM AND BUDGET, January 2012. Contains information on the Commission's projected annual budget and the work activities associated with funding that is received.

RAPPORT (Quarterly Newsletter) Quarterly updates of regional planning activities.

Sewer Service Area Plans

FREEDOM 2030 SEWER SERVICE AREA PLAN, January 2012 and the EMABARRASS/ CLOVERLEAF LAKES SEWER SERVICE AREA PLAN, March 2013. Population and land use information was used to delineate 20-year future growth areas. Preservation of environmentally sensitive areas and cost effective and efficient development patterns are also promoted.

Transportation Plans

TRANSPORTATION IMPROVEMENT PROGRAM FOR THE FOX CITIES TRANSPORTATION MANAGEMENT AREA, October 2012. A five-year list of all proposed federal and state aid transportation projects.

TRANSPORTATION IMPROVEMENT PROGRAM FOR THE OSHKOSH URBANIZED AREA, October 2012. A five-year list of all proposed federal and state aid transportation projects.

TRANSPORTATION IMPROVEMENT PROGRAM FOR THE FOND DU LAC URBANIZED AREA, October 2012. A five-year list of all proposed federal and state aid transportation projects.

2012 OUTAGAMIE COUNTY 85.21 COUNTY ELDERLY AND DISABLED TRANSPORTATION ASSISTANCE PROGRAM GRANT, December 2010. An annual state grant application required for the attainment of specialized transportation funding for all 72 counties in the State of Wisconsin. The Commission is contracted with Outagamie County to draft this document.

CTH JJ COORIDOR STUDY, January 2012. A complete streets plan developed to meet the needs of the area users.

Open Space Plans

TOWN OF BUCHANAN COMPREHENSIVE RECREATION PLAN 2013-2017, December 2012.*

CITY OF BRILLION OPEN SPACE AND RECREATION PLAN, March 2012.

WAUSHARA COUNTY COMPREHENSIVE OUTDOOR PARK AND RECREATION PLAN 2012-2016, March 2012.

** Describes existing conditions, projects future growth, and offers recommendations to guide the future growth and development of recreational facilities.*

Regional Plans

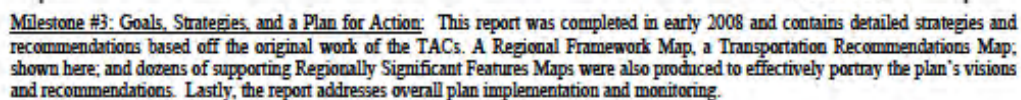
COMPREHENSIVE ECONOMIC DEVELOPMENT STRATEGY ANNUAL REPORT & SUPPLEMENT, October 2012. This report updates an economic development program for East Central Wisconsin. Specific public and private investment projects intended to promote economic development with the region area described.

Other Documents

TOWN OF BUCHANAN ECONOMIC DEVELOPMENT STRATEGY – 2013, Adopted December 18, 2012. This report is an economic development strategy for the Town of Buchanan identifying the Town’s economic development vision, goals, objectives, strategies and actions.

FORMER NEWPAGE MILL PROPERTY REDEVELOPMENT STRATEGY, November 2012. This report summarizes three neighborhood visioning workshops, highlights key input gathered, and provides recommendations for moving forward with the redevelopment of the former NewPage Mill site in the Village of Kimberly (*Outagamie County*). (Public Workshop Results)

Exhibit T-1: Priority Transportation Projects / Plans / Studies





East Central Wisconsin
Regional Planning Commission

ECWRPC

400 AHNAIP STREET, SUITE 100
MENASHA, WISCONSIN 54952-3100
PHONE (920)761-4770
FAX (920)761-4771
www.ecwrpc.org

PRESRT STD
U.S. POSTAGE PAID
Menasha, WI 54952
Permit No. 94



Commission Officers

Bob Hermas, Menominee County
Chair

Donna Kalata, Waushara County
Vice-Chair

Eric W. Fowle, AICP
Executive Director

Walt Rath
Vicky Johnson
Erin Bonnin
Editors

Michael Zuege
Cover Design
and Layout



The East Central Wisconsin Regional Planning Commission's CY 2012 planning program is supported by federal assistance. Specific funding for this report was provided by the Federal Highway Administration, Federal Transit Administration, the Wisconsin Department of Transportation, the Economic Development Administration, Wisconsin Department of Administration and the Wisconsin Department of Natural Resources. The contents of this document do not necessarily reflect the official views and policies of the U.S. Department of Transportation, Federal Highway Administration.