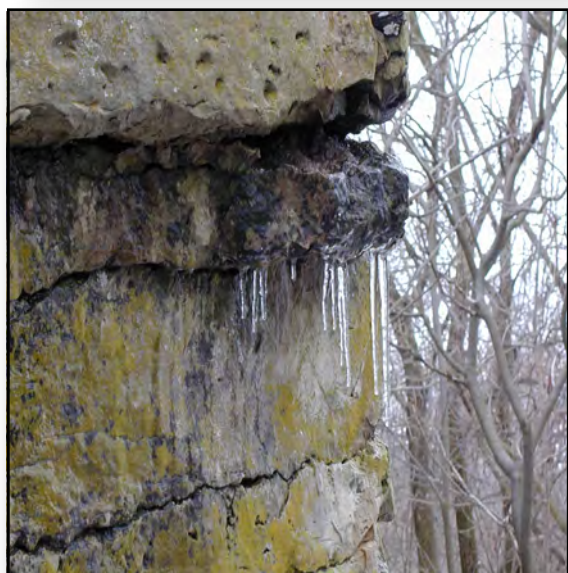


East Central Wisconsin Regional Planning Commission

Annual Report 2010-2011



*An Economic Development District and Metropolitan Planning Organization
Serving the East Central Wisconsin Region for over 35 years
A Recipient of the 2010 Fox Cities Greenways Inc. "Partnership Award"*

Member Counties:

Calumet

Menominee

Outagamie

Shawano

Waupaca

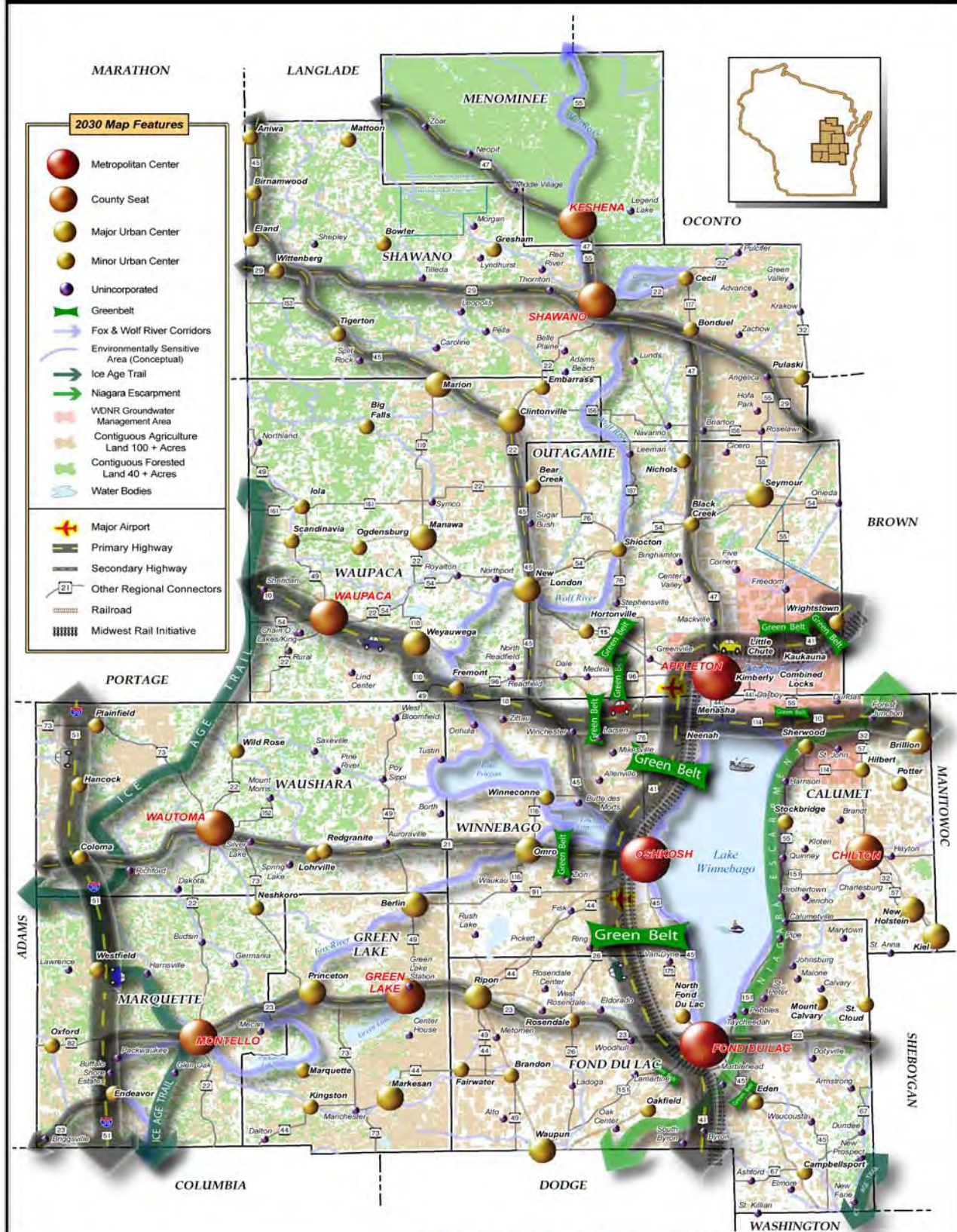
Waushara

Winnebago

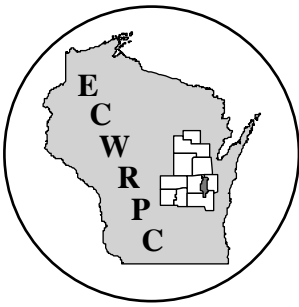
YEAR 2030 REGIONAL COMPREHENSIVE PLAN

Goals, Strategies, and A Plan For Action

Exhibit LU-1: Year 2030 Regional Framework Map



Milestone #3: Goals, Strategies, and a Plan for Action: This report was completed in early 2008 and contains detailed strategies and recommendations based off the original work of the TACs. A Regional Framework Map; shown here; a Transportation Recommendations Map, and dozens of supporting Regionally Significant Features Maps were also produced to effectively portray the plan's visions and recommendations. Lastly, the report addresses overall plan implementation and monitoring.



EAST CENTRAL WISCONSIN REGIONAL PLANNING COMMISSION

400 Ahnaip Street, Suite 100 Menasha Wisconsin 54952 (920) 751-4770 Fax (920) 751-4771
Website: www.eastcentralrpc.org Email: staff@eastcentralrpc.org

*An Economic Development District and Metropolitan Planning Organization
Serving the East Central Wisconsin Region for over 30 years
-A Recipient of the 2010 Fox Cities Greenways, Inc., "Partnership Award"-*

April 29, 2010

To the Citizens of the East Central Region:

My first term as Chair of the Commission provided me with an excellent opportunity to not only become more ingrained in the daily activities and management of the Commission, but also to assume a leadership role that is important in fostering the beneficial attitudes of regional collaboration. As I've worked with Commission staff over the past year, I continue to be impressed with the agency's long-standing history and its continued successes in the realm of 'regional planning'. As the Commission approaches its 40th anniversary it is appropriate to reflect on some of the notable contributions that East Central has made to region during the 2010 calendar year:

- The Commission secured just under one million dollars in federal transportation planning funds for a two-year regional "Safe Routes to School" (SRTS) program – the only such regional program in the State! These dollars support an efficient regional process for the preparation of local SRTS plans. The plans, in turn, will facilitate additional infrastructure improvements near our schools that will allow for more convenient - and safer - bike and pedestrian travel to and from these facilities.
- Once again, the Commission has shown its leadership in regional economic development by procuring a \$133,000 EDA Global Trade Adjustment Assistance (TAA) grant. This funding will help the 18 counties which comprise 'The New North' to better assess their market opportunities for exporting products beyond our nation's borders and will ultimately foster additional job creation within the region.
- The Commission was recognized formally by the Fox Cities Greenways in 2010 with its inaugural "Partnership Award". This award was given to recognize East Central's long standing support and advocacy for this group's efforts, as well as to recognize the importance of addressing bicycle and pedestrian infrastructure in our communities through both short and long-range planning.
- The Commission was also an integral part of the creation of two separate non-profit entities (Fox Wisconsin Heritage Parkway and Niagara Escarpment Resource Network). These efforts resulted directly from the Commission's long-term involvement and visionary work and serve as excellent examples of regional collaboration.

Unfortunately, the Commission was saddened late in the year to learn that our Calumet County Commissioner, Clarence Wolf passed away at the age of 96. Mr. Wolf was the longest standing, active Commissioner to serve on our board and was the only Commissioner who could claim their involvement in the initial formation of the Commission back in 1972. We will miss Mr. Wolf and his contributions.

As the State of Wisconsin is now preparing its biennial budget, and its potential impacts to Counties and local units of government are now becoming clearer, it should serve as a reminder to our members that their investment in regional planning is important. The Commission has often played a role in creating programs that can promote efficiencies and cost savings at the local level. As the year goes on, I would personally request that all of our member counties consider utilizing East Central to the extent possible when trying to balance the needs of their citizenry and their respective budgets.

I look forward to serving as Chair of the Commission during the upcoming year and representing the interests of our member counties through these challenging times.

Respectfully Yours,

Ken Capelle, Chair
Shawano County Representative

Table of Contents

Chairman's Letter to the Region	i
Introduction	1
Commission Overview	2
Description of the Region	11
Regional Comprehensive Planning Program	14
Community Facilities Planning Program	17
Transportation Planning Program	20
Open Space and Recreation Planning Program	29
Economic Development & Housing Program	33
Environmental Management Planning Program	39
Local Assistance Planning Program	43
Geographic Information System Program	45
Information Technology Program	48
Commission Administration	49
Appendix A - Technical Advisory Committees	50
Appendix B - New Publications	51
Exhibit 1 - East Central Region, Membership Status, 2010	3
Exhibit 2 - Roster of East Central Counties and Commissioners, May 1, 2010	6
Exhibit 3 - Commissioner Photographs	7
Exhibit 4 - East Central RPC Table of Organization, 2010	9
Exhibit 5 - East Central RPC Staffing, 2010	9
Exhibit 6 - East Central RPC Revenue Sources, 2010	10
Exhibit 7 - East Central Budget/Levy History	10
Exhibit 8 - East Central RPC 2010 Levy Distribution	10
Exhibit 9 - Historic and Projected Population of the East Central Region	12
Exhibit 10 - East Central Region - Population Change 2000-2010	13
Exhibit 11 - East Central Region - Smart Growth Planning Status, April 2011	16
Exhibit 12 - East Central Region - Annual County Recycling Rates per Capita	19
Exhibit 13 - East Central Region - Transportation Travelshed	24
Exhibit 14 - Fox-Wisconsin Parkway, Lower /Upper Fox River Projects	31
Exhibit 15 - East Central Region - Global Trade Export Amounts	35
Exhibit 16 - NR-135 Permit Summary 2010	41
Exhibit 17 - East Central Region - NR-135 Reclamation Mining Sites	42
Exhibit LU-1 - Year 2030 Regional Framework Map	Inside front cover
Exhibit T-1 - Priority Transportation Projects/Plans/Studies	Inside back cover

Introduction

The 2010 Annual Report illustrates the accomplishments and activities of the Commission during the past calendar year. It serves to document the Commission's progress toward the achievement of regional goals related to land use, development and preservation. It also provides a regional context for local or county-level land use planning efforts and issues, and identifies products (Appendix B) resulting from the work activities of the Commission that may be of use to local units of government.

The report contains two major sections: an overview of the Commission, its structure, roles, responsibilities, and the planning functions that it serves. This section describes the organizational arrangements, roles and responsibilities of the various agencies involved in the planning process and the decision making process used to prepare, implement and periodically reevaluate the policy and action recommendations of the Commission. It also describes the approach used in developing planning work programs and the management of the planning process, while addressing the specific requirements of the various federal and state grant programs and outlines how they will be achieved through the scheduled work activities.

The second part of this report contains specific information regarding the regional and local tasks and activities that were worked on or accomplished

by Commission staff during 2010 and are organized in a manner which reflects the structure of the Commission's Annual Work Program & Budget that is prepared and adopted in July of each year.

The Annual Work Program & Budget is structured in a manner that, over time, will mirror the framework of the Commission's adopted Year 2030 Regional Comprehensive Plan. The Regional Comprehensive Plan will serve as the 'umbrella' with a number of distinct, but interrelated, planning programs falling underneath it. These planning programs include community facilities, transportation, economic development, open space and recreation and environmental management. All of these programs are focused on comprehensive planning in that they emphasize land use interrelationships and take into account the environment, the economy and the community. Each of these program elements receives direction from the regional comprehensive plan (regional goals and strategies) and provides feedback to it (policies and recommendations).

In addition to the comprehensive program elements, other planning programs address current (local) planning and assistance such as the geographic information systems (GIS) planning and information technology (IT) systems programs.



Commission Overview

Commission History

The East Central Wisconsin Regional Planning Commission (Exhibit 1) was created as a regional planning commission by Executive Order No. 41, issued by Governor Patrick J. Lucey and dated June 29, 1972. This action was taken following the submittal of petitions by the ten counties within the East Central region pursuant to SS. 66.945 (now SS. 66.0309), the existing regional planning enabling statute. The East Central RPC was preceded by two areawide planning agencies: the Fox Valley Council of Governments (FVCOG) which was formed in 1956 and was composed of fifteen governmental units in the Appleton-Neenah and Oshkosh urbanized areas, and the Northeastern Wisconsin Regional Planning Commission (NEWRPC) formed in 1962 and composed of nine counties encompassing the Wolf River Basin. With the issuance of HUD's Areawide Planning Organization (APO) and Areawide Principal Jurisdiction (APJ) certification requirements in July, 1970, these two agencies were dissolved and replaced by East Central, which was roughly aligned with proposed uniform state administrative districts. The three northernmost counties of NEWRPC were dropped from the region and Calumet, Fond du Lac, Green Lake and Marquette counties were added on the south. Calumet and Fond du Lac counties had ongoing county planning programs prior to their affiliation with East Central.

The existence of different state agency configurations at the time various regional planning agencies were formed, coupled with the fact that the Governor did not adhere to the districting configuration when forming East Central, resulting in the significant overlapping of jurisdictions. In the past, the East Central region coordinated its planning program through memoranda of agreement with up to three criminal justice planning regions (now a statewide function), two health planning districts (now defunct), three manpower planning districts (now four), two area agencies on aging (now one), two rural conservation and development districts, two community action programs (now three), one water quality management planning area (now defunct), the Wisconsin Rural Housing Cooperative and the State Clearinghouse. Additionally East Central coordinated with two regional transportation offices and one district natural resource office.

The basic rationale for the East Central Region as a geographic planning region is twofold. First, the

Appleton MSA (metropolitan statistical area and Oshkosh-Neenah MSA are geographic units that can only be modified by the federal Office of Management and Budget. These two areas have overlapping mandatory planning requirements for various federal funding programs above and beyond those for other areas. The City of Fond du Lac was designated an urbanized area effective May, 2002 when the population exceeded 50,000 with the 2000 Census. The Metropolitan Planning Organization (MPO) designation was made by the Governor of Wisconsin in December, 2002. The Fox Cities, Oshkosh and Fond du Lac urban areas thus serve as the focus for regional planning in this four county area, along with the urban water quality focus of the Winnebago pool and the lower Fox River.

To the west and the north, Green Lake, Marquette, Waushara, Waupaca, Shawano and Menominee counties share a common rural character, while having a general orientation to the urban counties as trade and employment centers. However, when going to the extremes of the rural counties, these ties fade, and are shifted outside the region. The basic orientation for planning in the East Central region recognizes both the diversity and commonality, and tailors program activities accordingly. This overall planning framework is consistent throughout the region.

Within the statutory provisions of SS. 66.0309 (previously SS. 66.945), East Central's main stated purpose is the "function and duty of making (preparing) and adopting a master (comprehensive) plan for the physical development of the region." This basic enabling statute is complemented by the comprehensive planning law (Smart Growth) ss. 66.1001 that specifies the content of the regional comprehensive plan.

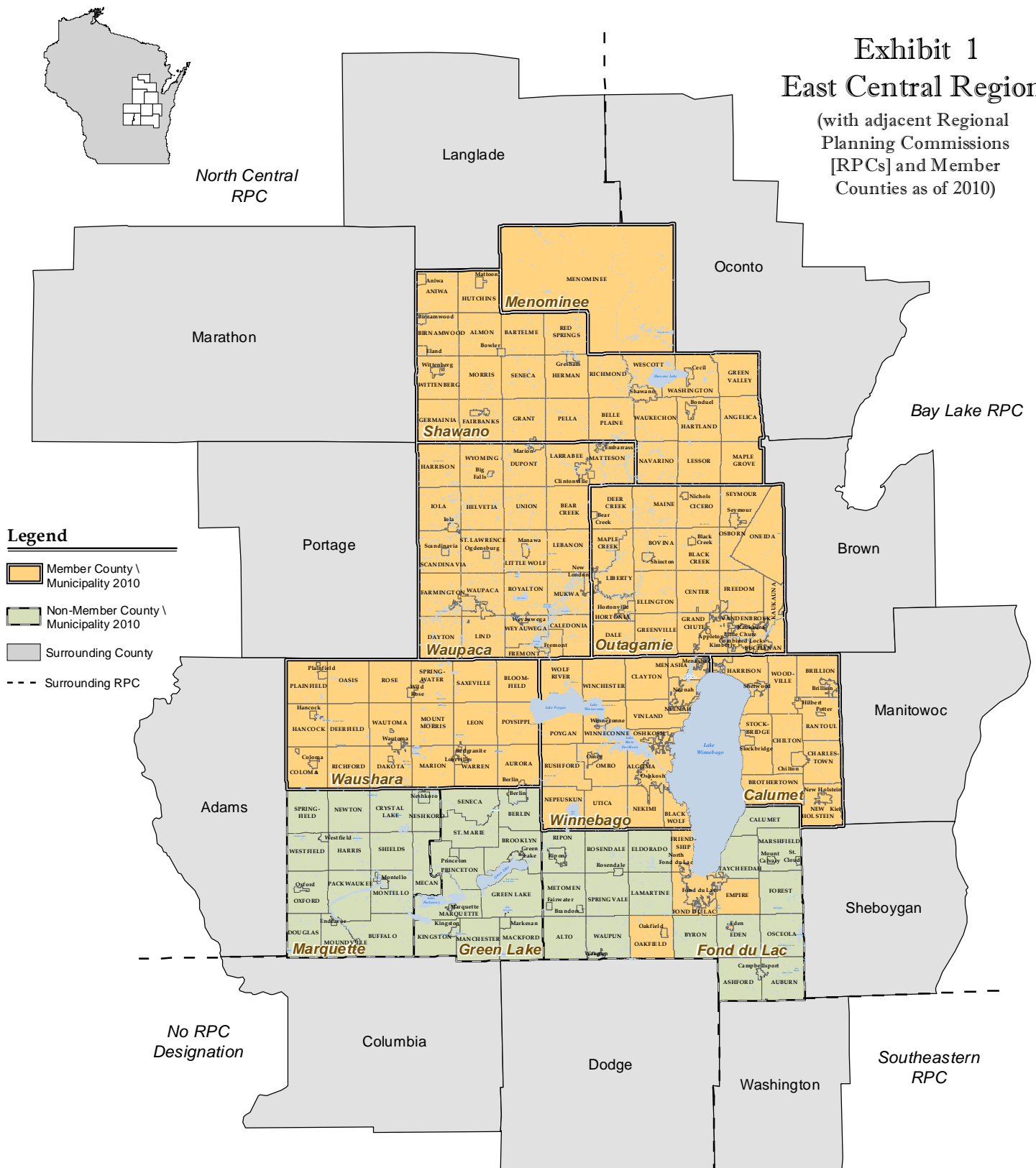
Structure & Policy Making Process

The basic representation on the Commission's policy body consists of three commissioners from each county as follows:

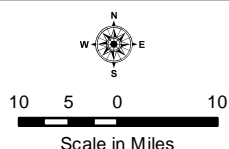
1. The chairman of the county board serves on the Commission because of his or her elective office.

Exhibit 1 East Central Region

(with adjacent Regional
Planning Commissions
[RPCs] and Member
Counties as of 2010)



Sources:
Member County information provided by ECWRPC 2010.
Base map data provided by the Regional counties and
DNR Wisland data.



This data was created for use by the East Central Wisconsin Regional Planning Commission Geographic Information System. Any other use/application of this information is the responsibility of the user and such use/application is at their own risk. East Central Wisconsin Regional Planning Commission disclaims all liability regarding fitness of the information for any use other than for East Central Wisconsin Regional Planning Commission business.



Prepared April, 2011 By:
East Central Wisconsin Regional
Planning Commission
400 Ahnapee Street Suite 100
Menasha, Wisconsin 54952

2. A second member is appointed by the county board. This individual must hold executive or legislative elective office within town, village, city or county governmental bodies within the appointing county. This member is automatically the county executive, if the county has one.
3. A third member is appointed by the Governor from a list of six persons nominated by the county board. At least four of these nominees must be private citizens.
4. Additional representatives are provided to counties with a population of 50,000 or greater; one for each attained increment of 50,000. The first additional representative is the mayor or council president of the largest city in the county, while subsequent additional members are appointed in a manner similar to the second member appointment procedures noted above.

Exhibit 2 contains a listing of East Central Commissioners for each county in 2010 and notes the manner of appointment as identified above. Exhibit 3 contains recent photographs of the Commissioners. The Commission has internally organized itself to facilitate broad involvement in its decision-making process. Exhibit 4 contains a table of organization of East Central's Commission and standing committees, while Exhibit 5 provides a listing of staff. Appointments to standing committees are made by the Chairman annually and are confirmed by the Commission as follows:

- ◇ Steering Committee - The Steering Committee is composed of seven members, one representative of each of the member counties. The function of the Steering Committee includes ensuring proper coordination and cooperation amongst the planning committees of the Commission and their respective citizens' or technical advisory committees. The Committee also has the power to act in emergency situations with the full power and authority of the Commission; keep the Commission advised of pending legislation affecting the Commission, its policies and its programs; prepare annual work programs and budgets; approve local assistance contracts; conduct audit reviews; oversee the payment of bills and determine compensation rates, along with employment and salary determinations.
- ◇ Regional Comprehensive Plan Committee - This committee's primary role is to oversee the implementation and monitoring of the regional comprehensive plan. Other roles include intergovernmental cooperation and coordination matters, review functions to consider compliance with the regional plan, and other matters associated with land use.
- ◇ Transportation Committee - This committee directs and monitors the transportation program element and serves as a liaison with the Transportation Policy Advisory Committees and the Transportation

Technical Advisory Committee. This committee is responsible for overseeing the transportation element of the regional plan.

- ◇ Community Facilities Committee - This committee reviews, and recommends approval or denial of sewer service area plans and amendments, and oversees the community facilities element of the regional plan.
- ◇ Economic Development Committee - This committee directs and monitors the economic development program element and serves as a liaison with the broader Economic Development Strategy Committee (see below). This standing committee has oversight of the economic and housing related elements of the regional plan.
- ◇ Open Space and Environmental Management Committee - This committee directs and monitors the open space, agriculture and environmental management program. It also has oversight of the related elements of regional plan.

Rather than maintain Technical Advisory Committees (TACs) for each functional area, the commission has TACs for the two principal areas of work activity, transportation and economic development. As studies are carried out in other areas, special project-based TACs are formed for the duration of the study. Likewise, special study advisory committees for various transportation projects would be formed as needed. The Transportation Policy Advisory Committees for the Fox Cities (Appleton) Urbanized Area and the Oshkosh Urbanized Area exist to provide the monitoring and review necessary in the Transportation Improvement Program (TIP) and long range planning activities in the respective urbanized areas. A membership roster of all current advisory committees is provided in Appendix A. After adoption of a plan or policy recommendation by the Commission, ratification is sought from appropriate local units of government. To the maximum extent possible, Commission adoption and local ratification are coordinated.

The second TAC, known as the Economic Development Strategy Committee, is comprised of diverse representatives from both the public and private sectors of the region. Its main purpose is to advise and guide the EDA funded Comprehensive Economic Development Strategy, or CEDS, planning process. A listing of the TAC's membership for 2008 is contained in Appendix A. By providing input and perspective from these diverse perspectives, the CEDS becomes a very current and meaningful document for guiding the region's

economic development activities for the betterment of the region as a whole.

Interagency Coordination

The Commission views its coordinating role as central to its reason for existence. Intergovernmental coordination is facilitated through the development of its Annual Work Program & Budget, specific requests for assistance, by using formal memoranda of agreement relative to programs and review procedures, and active and meaningful participation on advisory committees. Several major examples of the Commission's work in the area of interagency coordination include:

To carry out federal water quality management planning requirements (Section 208 of P.L. 92500), it was necessary to form a new agency in the mid-seventies to meet the EPA's urban-industrial complex requirements for jurisdictional area and for one policy body. East Central and Brown County had jointly formed the Fox Valley Water Quality Planning Agency under SS. 66.30 in 1972 for such purpose. That agency was formally disbanded in December, 1989 principally because of inadequate funding resources and separate designation was sought by East Central. The Department of Natural Resources never acted on the request and reassumed the water quality planning responsibility at the state level. However, within the state Administrative Code for Water Quality Management, provisions are made whereby East Central is deemed the responsible agency for sewer service area delineation and administration under a memorandum of understanding with the Wisconsin Department of Resources. As a result, the Commission continues to play a strong role in the development and implementation of 25 separate Sewer Service Area (SSA) Plans throughout the region. Policies and procedures exist to update and amend these Sewer Service Area Plans on a routine basis.

The coordination of East Central's transportation planning activities with state and federal transportation planning and management efforts is accomplished in numerous ways. First, FHWA, FTA, and WisDOT have representatives on the Fox Cities and Oshkosh Area Transportation Policy Advisory Committees. Second, WisDOT Bureau of Planning, as well as WisDOT's regional offices have representatives on East Central's Transportation Technical Advisory Committee. Third, East Central staff participates in numerous committees and regional transportation planners' sessions.

The coordination of East Central's transportation planning activities with local planning and management efforts is also accomplished in numerous ways. First, county highway commissioners, directors of public works, city traffic engineers, city and county planners, airport managers, among others, are members of the Transportation Technical Advisory Committee. Second, East Central staff members participate with local organizations such as the Appleton Parking and Transit Commission and county transportation coordinating committees. Each year, during preparation of East Central's Work Program, East Central staff solicits input from local planning staff on transportation-related planning activities that will be undertaken the following year.

Public Participation and Outreach

East Central is considered to be a governmental entity and falls under the same rules as counties or municipalities, in terms of providing adequate public notice on all of its full quarterly Commission meetings and related Standing Committee meetings (Steering, Transportation, Open Space, Economic Development, Community Facilities, and Regional Comprehensive Plan). In addition to the required meeting postings and mailings to affected parties and media outlets, other efforts are made to notify and obtain public input on regional scale planning efforts from counties, communities and members of the citizen and business community. On a regular basis, the Commission develops and distributes information through the following methods:

- ◇ The Commission's website www.eastcentralrpc.org.
- ◇ The publication of this Annual Report document.
- ◇ The publication of three newsletters (The Rapport) in January, July, and October of each year.
- ◇ The publication of an Annual Work Program and Budget document.
- ◇ The development of periodic single or partial-day conferences and training sessions for local officials on current land use topics.

Exhibit 2 – Roster of East Central Counties and Commissioners - May 1, 2010

CALUMET COUNTY

1. Bill Barribeau, County Board Chairman
2. Alice Connors, County Board Supervisor
3. Clarence Wolf, Gubernatorial Appointee

FOND DU LAC COUNTY

(Withdrew from participation January 1, 1982. Individual communities members exist, but are not represented on the Commission)

GREEN LAKE COUNTY

(Withdrew from participation January 1, 1975. No individual community members exist, and no representation is provided on the Commission)

MARQUETTE COUNTY

(Withdrew from participation January 1, 2002. No individual community members exist, and no representation is provided on the Commission)

MENOMINEE COUNTY

1. Elizabeth Moses, County Board Chair (Perm. Alt. – Jeremy Johnson)
2. Robert Hermes, County Board Appointee
3. Ruth Winter, Gubernatorial Appointee

OUTAGAMIE COUNTY

1. Helen Nagler, County Board Chairman
2. Robert “Toby” Paltzer, County Executive
3. Timothy Hanna, Mayor, City of Appleton
4. Robert Weyenberg, County Board Supervisor
5. Kathy Groat, County Board Supervisor
6. Paul Hirte, Gubernatorial Appointee

SHAWANO COUNTY

1. Jerry Erdmann, County Board Chairman
2. Ken Capelle, County Board Supervisor
3. M. Eugene Zeuske, Gubernatorial Appointee

WAUPACA COUNTY

1. Dick Koeppen, County Board Chairman
2. Brian Smith, Mayor, City of Waupaca
3. Duane Brown, County Board Supervisor
4. DuWayne Federwitz, Gubernatorial Appointee

WAUSHARA COUNTY

1. Norman Weiss, County Board Chairman
2. Larry Timm, County Board Supervisor
3. Neal Strehlow, Gubernatorial Appointee

WINNEBAGO COUNTY

1. David Albrecht, County Board Chairman
2. Mark Harris, County Executive
3. Paul Esslinger, Mayor, City of Oshkosh (Perm. Alt. – Mark Rohloff, City. Mgr.)
4. Jim Erdman, County Board Appointee
5. Ken Robl, County Board Supervisor
6. Ernie Bellin, Gubernatorial Appointee

<i>Total Number of Commissioners</i>	<i>28</i>
<i>Number Holding Elected Office</i>	<i>20</i>
<i>Number of County/Municipal Staff</i>	<i>1</i>
<i>Number of Citizen Representatives</i>	<i>7</i>

Exhibit 3 East Central RPC Commissioners



Bill Barribeau
Calumet County



Alice Connors*
Calumet County



Patrick Laughrin*
Calumet County



Clarence Wolf
Calumet County



Robert Hermes
Menominee County



Jeremy Johnson
Menominee County



Ruth Winter
Menominee County



Robert "Toby" Paltzer
Outagamie County



Clifford Sanderfoot*
Outagamie County



Helen Nagler
Outagamie County



Timothy Hanna
Outagamie County



Paul Hirte
Outagamie County



Jim Steineke*
Outagamie County



Kathleen Groat*
Outagamie County



Bob Weyenberg*
Outagamie County



Marshal Giese*
Shawano County



Jerry Erdmann*
Shawano County



M. Eugene Zeuske
Shawano County



Ken Capelle
Shawano County



Dick Koeppen
Waupaca County



Brian Smith
Waupaca County



Duane Brown
Waupaca County



DuWayne Federwitz
Waupaca County



Norm Weiss
Waushara County



Neal Strehlow
Waushara County



Larry Timm*
Waushara County



Bob Maloney*
Waushara County



Mark Harris
Winnebago County



David Albrecht
Winnebago County



Ernie Bellin
Winnebago County



Jim Erdman
Winnebago County



Ken Robl
Winnebago County



Mark Rohloff, Alt.
Winnebago County

NOT PICTURED:

Elizabeth Moses
Menominee County

Paul Esslinger
Winnebago County

* Served portion of 2010



Eric Fowle
Executive Director/
Secretary/Treasurer



Walt Raith
Assistant Director/
MPO Director

Exhibit 4 – Table of Organization, 2010 East Central Commissioners

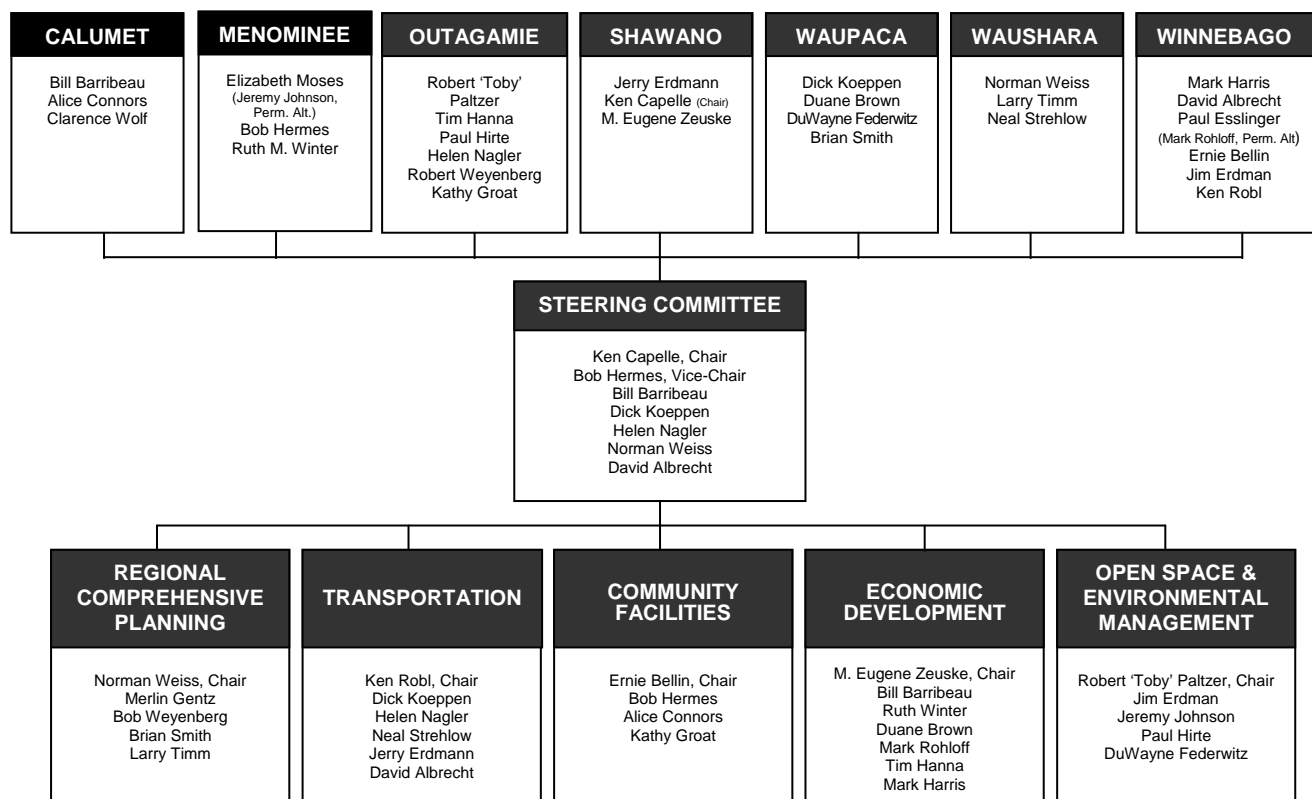


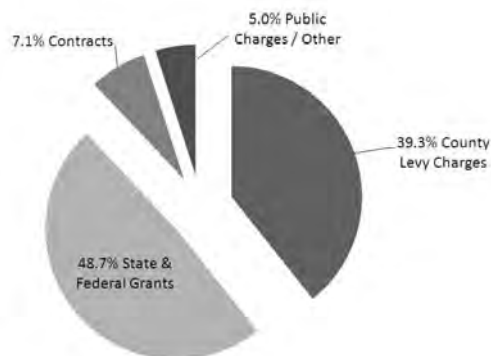
Exhibit 5 – East Central RPC Staffing, May 1, 2010

<u>Administrative Staff</u> Eric W. Fowle, AICP, Executive Director Walt Raith, Assistant Director / MPO Director Vicky Johnson, Administrative Coordinator Edalia Haney, Administrative Assistant Angela Cottrell, Controller	Joe Huffman, Sewer Service Area Planner Tom Baron, Community Development Planner Nick Musson, Transportation Planner ¹
<u>Planning Staff</u> Jason Kakatsch, Principal Transportation Planner Kathy Thunes, P.E., Principal Community Development Planner Kara Homan, AICP, Principal Economic Development Planner David Moesch, Associate Transportation Planner Scott Konkle, Mine Reclamation Specialist Melissa Kraemer Badtke, Planning Specialist SRTS Todd Verboomen, Sewer Service Area Planner	<u>Geographic Information Systems Staff</u> Trish Nau, GIS Coordinator Mike Zuege, GIS Specialist II Adam Pfefferle, GIS Specialist I Mike Patza, GIS/Planning Assistant
	<u>Information Technology Staff</u> Tim Badtke, IT Coordinator
	<u>Notes:</u> ¹ Employed for a portion of 2010

Summary of Budget and Cost-Sharing

Based on its 2010 audit, the East Central Wisconsin Regional Planning Commission had total operating revenues of \$1,947,413. Of this amount, \$765,511 (39.3%) was derived from a direct tax levy to its seven member counties. An additional \$947,490 (48.7%) was received from various state and federal entities as cost-shared grants for specific program work. The remaining revenues were derived throughout the calendar year in the form of local contracts, small local grants, or miscellaneous revenues. Exhibit 6 illustrates the proportion of revenues from the 2010 budget year, while Exhibit 7 provides a recent history of the comparison between the total annual budget and the counties' proportionate levies. Exhibit 8 contains detailed information on each county's respective portion of the 2010 levy.

Exhibit 6 – East Central RPC Revenue Sources, 2010



State and federal funded programs include the transportation planning from FHWA, FTA and WisDOT; the economic development program from EDA; and, the sewer service area program from WDNR. Portions of the local levy are committed as matching funds and are allocated among each work element on the basis of: 1) the relative benefits to be derived by each funding agency's program; 2) the grant program's eligibility requirements, and; 3) federal and state cost sharing formulas.

Levy revenues are determined by the Commission on an annual basis and for 2010, in response to county-level budget constraints, it was decreased by 4.81%, or -\$38,710, from 2009 levels. Over the long term, when compared to staffing and budget needs of the Commission, an ever-widening gap continues to form

within its budget (Exhibit 7). This gap is typically filled with local contract work which reduces the effectiveness of the Commission in proactively addressing regional concerns.

Exhibit 7 – East Central Budget/Levy History

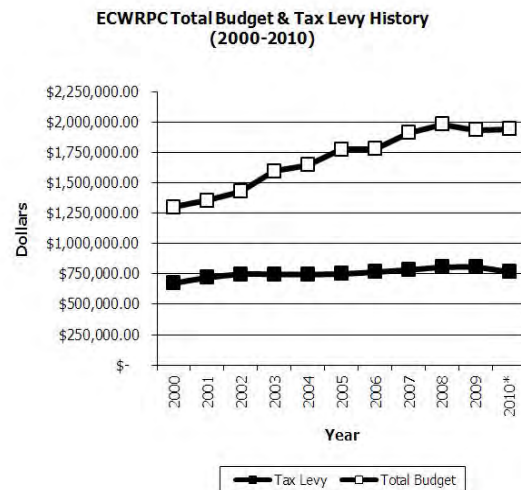


Exhibit 8 – East Central RPC 2010 Levy Distribution

Participating County / Municipality	2010 Tax Levy (Rate = 0.000019185)
CALUMET CO.	\$59,238
FOND DU LAC CO.	County not a member
C. of Fond du Lac	\$47,429
V. of Eden	\$875
V. of North FdL	\$3,532
V. of Oakfield	\$908
T. of Empire	\$5,159
T. of Fond du Lac	\$5,429
T. of Friendship	\$2,999
T. of Oakfield	\$980
GREEN LAKE CO.	County not a member
MARQUETTE CO.	County not a member
MENOMINEE CO.	\$5,889
OUTAGAMIE CO.	\$239,701
SHAWANO CO.	\$56,578
WAUPACA CO.	\$71,769
WAUSHARA CO.	\$50,244
WINNEBAGO CO.	\$214,783
TOTAL LEVY	\$765,511

Notes

- The 2010 Tax Levy was calculated on 2008 Equalized Valuation.

- The maximum levy is established by Wis. State Statutes at .003 percent.

Description of the Region

Physical Characteristics

The East Central region consists of 10 counties: Calumet, Fond du Lac, Green Lake, Marquette, Menominee, Outagamie, Shawano, Waupaca, Waushara and Winnebago, and three reservations: Menominee, Stockbridge-Munsee and a portion of the Oneida reservation (refer to Exhibit 1). The region encompasses 5,900 square miles and is rich in natural, cultural and agricultural resources. These resources have contributed significantly to the development of the region and are necessary components of the region's economic base and its quality of life.

Approximately 30% of the region is covered in woodland or forest and 50% is in agricultural use. The remaining 20% is either developed or in some other type of use. Abundant water resources such as the Fox and Wolf Rivers, Lake Winnebago, the Horicon Marsh and numerous other streams, rivers, lakes and wetlands exist within the region. Physiographic features such as the Niagara Escarpment and a variety of glacial features such as drumlins, moraines, outwash plains and kettle lakes contribute to a varied landscape. The region contains 91,000 acres of state wildlife and fishery lands, two state parks, over 1,000 miles of trout streams, conservancy areas such as Rush Lake, and many county and local parks and recreation trails. A variety of local museums, historical sites, theaters, restaurants, sporting venues and other amenities also contribute to the region's quality of life.

Historical Development

The waterways in the region formed the first major transportation routes as French fur traders and missionaries began interacting with Native Americans living along the Fox River as early as 1634. As trade increased, more European immigrants moved into the area, settling on or near the Fox River. By 1845, eight communities in the East Central region were incorporated as cities or villages. Five of those communities, Fond du Lac, Neenah, Oshkosh, Stockbridge and Waupun, are in existence today. The other three communities, Ceresco, Grand Chute and Taycheedah, were incorporated into other communities. Although barge traffic on the Fox River served past transportation needs, these waterways are now primarily used for recreation and tourism. Most of today's traffic and freight moves along an extensive road network that ranges in size

from well maintained local roads to major transportation corridors, such as USH 41, USH 10, STH 29 and STH 21. Significant freight rail infrastructure also exists throughout the region, including the mainline CN rail corridor. The region currently has no passenger rail service at this time, however; it does contain two regional airports: Outagamie County Regional Airport and Wittman Regional Airport, along with a number of smaller airports.

Population Characteristics

In 2010, the region's 651,835 residents comprised 11.5 percent of Wisconsin's population. Three-quarters of the region's population is concentrated in the four urban counties (Calumet, Fond du Lac, Outagamie and Winnebago). Exhibit 9 contains historic and projected populations for the region and its counties. Calumet and Outagamie comprise the Appleton Metropolitan Statistical Area (MSA), Winnebago County comprises the Oshkosh-Neenah MSA, and Fond du Lac is an independent urban center located along Lake Winnebago south of Oshkosh. This area, known as the Fox Valley, is a major manufacturing center for Wisconsin and the Midwest, focusing on paper products and machine manufacturing. The local healthcare industry is growing in size and importance.

The outlying portions of the four urban counties surrounding Lake Winnebago are more rural in character and contain some of the region's best farmland. The six rural counties to the north and west: Menominee, Shawano, Waupaca, Waushara, Marquette and Green Lake, contain many lakes and forested areas providing recreational and tourism activities. Waupaca and Winnebago counties have a number of heavy truck vehicle body and part manufacturing firms such as Pierce and Oshkosh Truck. Agriculture, mining, and the lumber and forest products sectors also contribute to the economic base of the region. In 2010, the two largest cities outside of the urban area include the City of Waupun (pop. 11,340), located in southern Fond du Lac County and the City of Shawano (pop. 9,305) in Shawano County.

Although the minority population is growing, Caucasians continue to comprise the overwhelming majority of the population for all counties, but Menominee County. The Menominee Reservation boundary encompasses the entire Menominee

County/Town jurisdiction, and Caucasians accounted for less than eleven percent of the population in 2010. Over eighty-seven percent of Menominee's population identified themselves as Native American. Region-wide, Caucasians comprised 92.4% of the population in 2010. Hispanics, which are the fastest growing ethnic population in the United States, comprised 3.5% of the region's population in 2010. They also tend to be a relatively young population. As a result, over time, they are expected to constitute a larger share of our labor force.

The region's population is also aging consistent with National trends. For example, the median age for Menominee County, which has traditionally had a younger population than the remainder of the region, was 28 years in 2008. The median age per county for the other nine counties in the region ranged from 37.1 years in Calumet County to 43.9 years in Marquette County; as a whole, the median age for the East Central Wisconsin Region was 38.7. Six percent of the region's population was under five years of age in 2008. Nineteen percent of the region's population was of school age. Sixty percent of the population was working age, while the remaining fourteen percent was age 65 or older. This age distribution currently provides the region with a significant workforce.

Source: Population, Race and Ethnicity: 2010 Census Redistricting File.

Age: 2008 Census Population Estimate Program

Workforce & Unemployment

Between 2000 and 2010, the civilian labor force increased from 345,573 persons to 356,831 persons. The number of employed persons decreased from 334,948 to 328,037 during this same time period. Economic restructuring and the "great recession" has meant that the number of unemployed persons and the unemployment rate has risen as well. In 2000, the region's unemployment rate (not seasonally adjusted) was 3.1%. Due to the overall economic downturn throughout the U.S., the region's unemployment rate rose to 8.1% in 2010 (a decrease from 8.5% in 2009). While this rate was less than that of the National unemployment rate average of 9.9%, it was slightly less than the State rate of 8.3%.

Source: Wisconsin Department of Workforce Development, LAUS

Wages & Income

Wages and income within the region have stagnated, as the average weekly wage for all industries in the region increased from \$494 in 2000 to \$714 in 2008, and has since declined to \$708 in 2009. Average per capita income for the region rose from \$27,074 in 2000 to \$36,359, in 2008 (most recent data available). However, wages vary substantially across different sectors. 2009 NAICS wage information indicated that average weekly wages ranged from \$1,163 in the professional and business services sector to \$189 in the leisure and hospitality sector.

Sources: Wisconsin Department of Workforce Development ES202; US Bureau of Economic Analysis REIS CA1-3.

Exhibit 9 - Historic and Projected Population of the East Central Region

Geographic Area	Source	Census 2000	DOA 2005	Census 2010	2015	2020	2025	2030
Wisconsin*	DOA	5,363,715	5,580,757	5,686,986	5,931,386	6,110,878	6,274,867	6,415,923
Region*	ECWRPC	609,558	638,699	651,835	691,308	714,939	737,521	756,877
Urban Counties	ECWRPC	455,781	479,272	494,293	522,191	542,867	562,993	581,444
Rural Counties	ECWRPC	153,777	159,427	157,542	169,117	172,072	174,528	175,433
Calumet	ECWRPC	40,631	45,168	48,971	52,239	55,445	58,414	61,141
Fond du Lac	ECWRPC	97,296	100,180	101,633	106,140	108,867	111,128	112,925
Green Lake	ECWRPC	19,105	19,375	19,051	20,032	20,184	20,152	19,996
Marquette*	ECWRPC	14,555	15,138	15,404	16,239	16,501	16,794	16,928
Menominee	ECWRPC	4,562	4,616	4,232	5,090	5,247	5,290	5,243
Outagamie*	ECWRPC	161,091	170,680	176,695	190,570	200,012	208,688	216,874
Shawano	ECWRPC	40,664	42,029	41,949	44,738	45,733	46,687	47,320
Waupaca*	ECWRPC	51,825	53,351	52,410	55,993	56,888	57,678	57,894
Waushara*	ECWRPC	23,066	24,918	24,496	27,024	27,518	27,925	28,051
Winnebago	ECWRPC	156,763	163,244	166,994	173,241	178,543	184,763	190,504

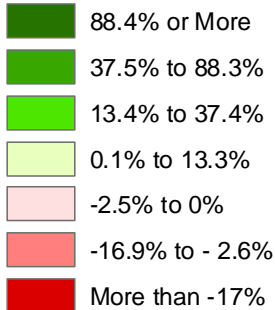
* 2000 population adjusted through the Census CQR program.

Source: U. S. Census, 2000 and 2010; DOA, 2005; ECWRPC 2004.

Exhibit 10 East Central Region Population % Change 2000-2010

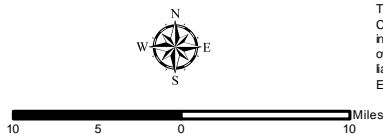
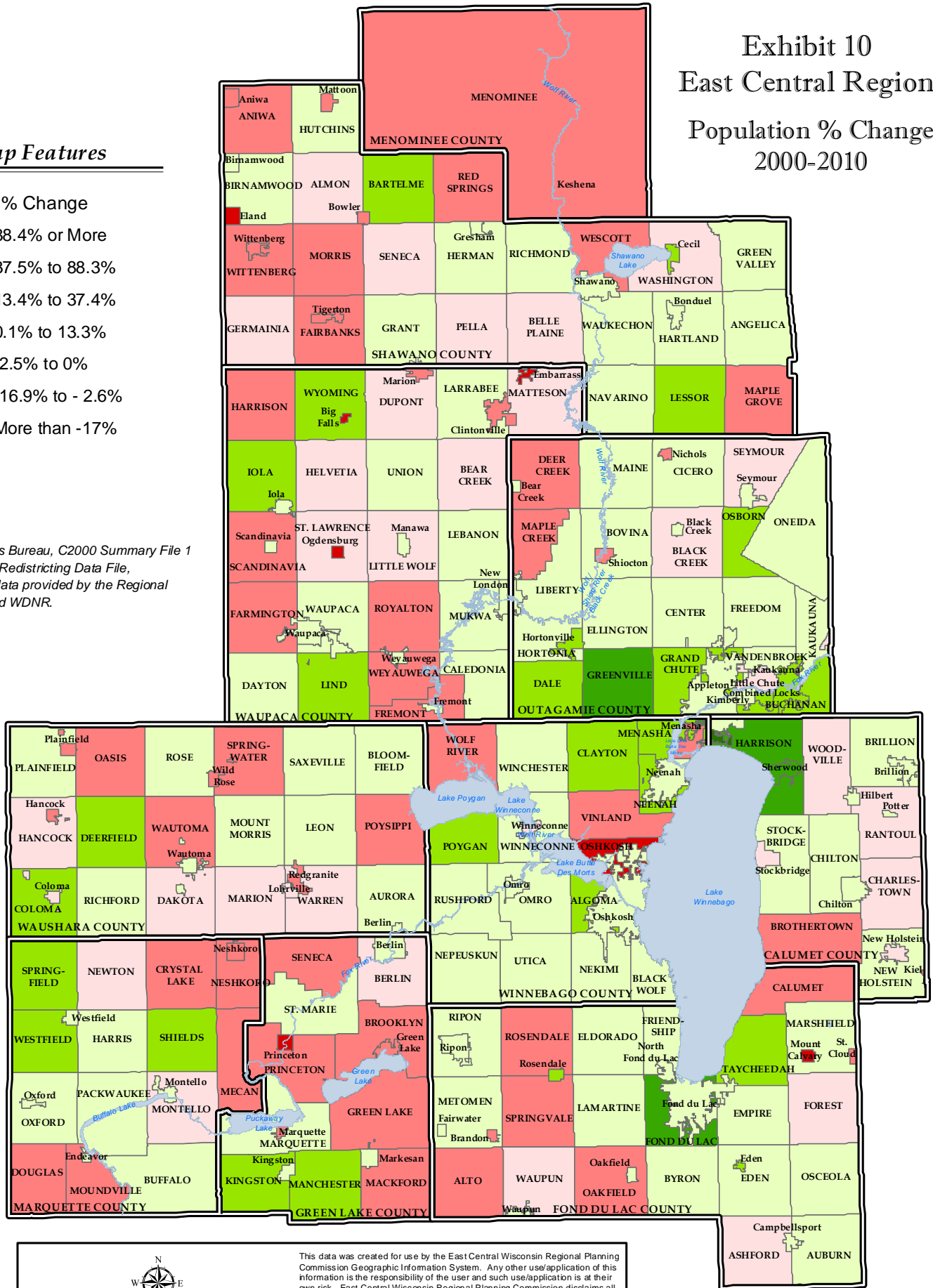
Map Features

% Change



Sources:

U.S. Census Bureau, C2000 Summary File 1 and C2010 Redistricting Data File, Base map data provided by the Regional counties and WDNR.



This data was created for use by the East Central Wisconsin Regional Planning Commission Geographic Information System. Any other use/application of this information is the responsibility of the user and such use/application is at their own risk. East Central Wisconsin Regional Planning Commission disclaims all liability regarding fitness of the information for any use other than for East Central Wisconsin Regional Planning Commission business.

Features on map are approximate locations and are to be used for reference purposes only.



Prepared April, 2011 By:

East Central Wisconsin Regional
Planning Commission
400 Ahnaip Street, Suite 100
Menasha, Wisconsin 54952

Regional Comprehensive Planning Program

Regional Comprehensive Plan

In the fall of 1999, new statewide comprehensive planning requirements were signed into law, as a part of the Governor's budget bill. SS 66.1001 requires that, starting in 2010, land use decisions must be based on an adopted comprehensive plan, as defined in the law. This applies to any and all levels of government within the State of Wisconsin that wish to exercise any land use regulatory powers. The legislation also requires the development of a regional plan by regional planning commissions throughout the state. The 'smart growth' legislation, as it has come to be known, requires the development of a nine element comprehensive plan. Those nine elements are:

1. Issues and Opportunities;
2. Housing;
3. Transportation;
4. Utilities and Community Facilities;
5. Agricultural, Natural, and Cultural Resources;
6. Economic Development;
7. Land Use;
8. Intergovernmental Cooperation, and;
9. Plan Implementation.

While the Commission had previously adopted a regional planning approach (developed in the 1970s), recent smart growth legislation establishes new comprehensive planning standards which required staff to undertake a major plan revision and update to address the full ten county region. The primary objective of the regional comprehensive plan is the production of a well integrated goal and action-oriented policy framework that will help to promote good local land use related decisions and thereby, cumulatively address the regional issues which exist now or in the future.

Working together with citizens, local governments, and interest groups, the Commission began the regional planning process in 2001 with the award of a Wisconsin Department of Administration 'Smart Growth' Planning Grant for \$175,000. As part of this process, seventeen separate Technical Advisory Committees (TACs) were formed to represent the numerous elements and sub-elements found in the comprehensive planning legislation. The TACs were consulted throughout the second part of the process and helped to effectively bridge the gap between the

established visions and the specific strategies which are needed to ultimately achieve them.

The Commission approved its Year 2030 Regional Comprehensive Plan on April 25th, 2008 after consulting the public through widespread notices and promotional efforts, including the hosting of four separate public informational meetings throughout the region. The resulting products were developed and produced through the planning process and are available for public review by contacting the Commission or viewing its website www.eastcentralrpc.org:

- ◇ *Milestone Report #1: The State of the Region:* The first technical report, adopted in April 2003, provides background information for the nine comprehensive planning elements. Descriptive text, tables, charts and numerous maps.
- ◇ *Milestone Report #2: Issues/Opportunities and Visioning:* Adopted by the Commission in July 2004, this report contains thematic vision statements for each of the planning elements, a clarification of issues and opportunities present in the region, and the identification of differences between the envisioned future and the current state of the region as reported in Milestone Report #1. This second report also includes preliminary goals for each element which were developed as a result of consulting the aforementioned 17 Technical Advisory Committees.
- ◇ *Milestone #3: Goals, Strategies, and a Plan for Action:* In 2004, work slowly began on the third report and was delayed significantly by numerous, unexpected staffing changes. This report was completed in early 2008 and contains detailed strategies and recommendations based off the original work of the TACs. A Regional Framework Map (inside front cover), Transportation Recommendations Map (inside back cover), and dozens of supporting Regionally Significant Features Maps were also produced to effectively portray the plan's visions and recommendations. Lastly, the report addresses overall plan implementation and monitoring.

By conducting and completing the regional planning process, East Central now has a firm handle on the issues and concerns that must be addressed through regional-level solutions. The plan lends itself as a framework of goals for which to achieve through the implementation of the plan's several hundred specific recommendations. The Commission's short term implementation goals revolve around improving

awareness of the plan amongst its regional constituents, as well as the development of a monitoring and reporting program. Other individual projects were initiated during 2010 and over the next several years in an effort to implement specific areas of the overall plan.

Regional Projects & Activities:

After the adoption of its Comprehensive Plan in 2008, the Commission spent time in 2010 to build awareness about the plan in the following ways:

- ◇ Staff attended meetings and conducted presentations or shared information with the following groups to further the implementation of the plan as well as to gather additional input:
 - The Hispanic Interagency Council;
 - Fox Cities Leadership Local Government Day.
- ◇ Staff coordinated, in conjunction with the Center for Land Use Education, a mini-conference regarding “Smart Growth” comprehensive plan implementation topics.
- ◇ The Commission prepared and submitted testimony regarding the Public Service Commission’s proposed Wind Energy System Siting Rules citing strategies and recommendations contained in the Regional Plan.
- ◇ Staff gathered data on the local comprehensive planning status within the region for the Wisconsin Department of Administration.
- ◇ Commission staff also participated in other activities related to smart growth planning including keeping its staff informed about current issues and networking with colleagues to learn new ideas. These included attendance at various conferences and seminars during 2010:
 - Wisconsin Chapter of American Planning Association (APA) Annual Conference;
 - 1000 Friends of Wisconsin, *Smart Growth at 10, Positioning Communities for the Future, Connecting Planning and Economic Growth*;
 - National APA Conference in New Orleans;
 - American Planning Association workshop on *Retrofitting Suburbia into Sustaining Places*.
- ◇ Commission staff also continued to monitor progress on the implementation of the Regional Plan’s strategies and recommendations. A framework for reporting progress continued to be developed during 2010.
- ◇ Commission staff participated in internal study circles of The Natural Step for Communities focusing on transportation issues.
- ◇ Staff spent significant time preparing and submitting a collaborative application for HUD/EPA/DOT

Livability grant funds for a project based on the USH 41 corridor (*Winnebago, Outagamie and Calumet Counties*). The grant was not funded in this round, but efforts will be made again in 2011 to re-apply to this program.

Local Assistance Projects & Activities:

Exhibit 11 illustrates the status of local level smart growth planning within the region. Over the years, the region’s local units of government have, for the most part, complied with this State mandate for planning. The Commission has and continues to have a role in this important program and conducted activities as follows:

- ◇ Staff continued to implement the Commission’s 1995 policy regarding the certification of locally adopted comprehensive plans. This policy applies to units of government within the three urbanized areas (Fox Cities, Oshkosh and Fond du Lac) and exists to ensure consistency with regional SSA and MPO derived Long-Range Transportation / Land Use Plans.

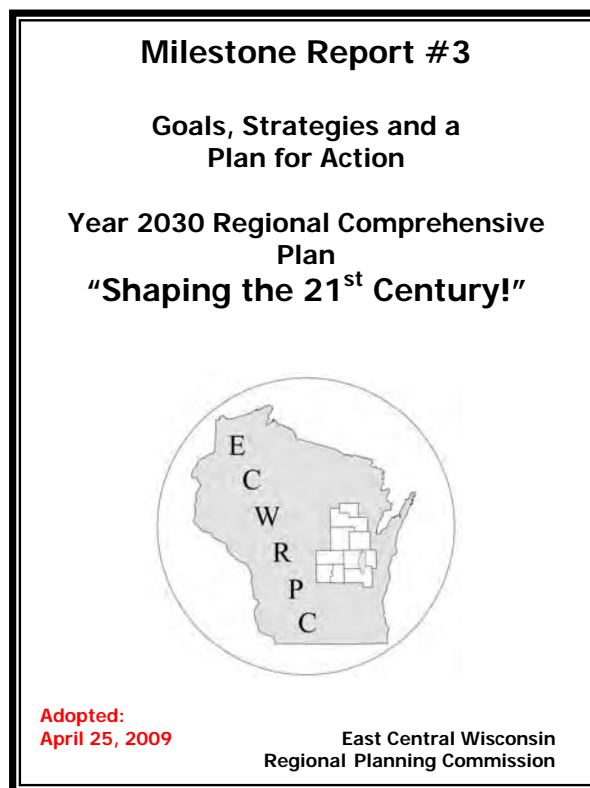


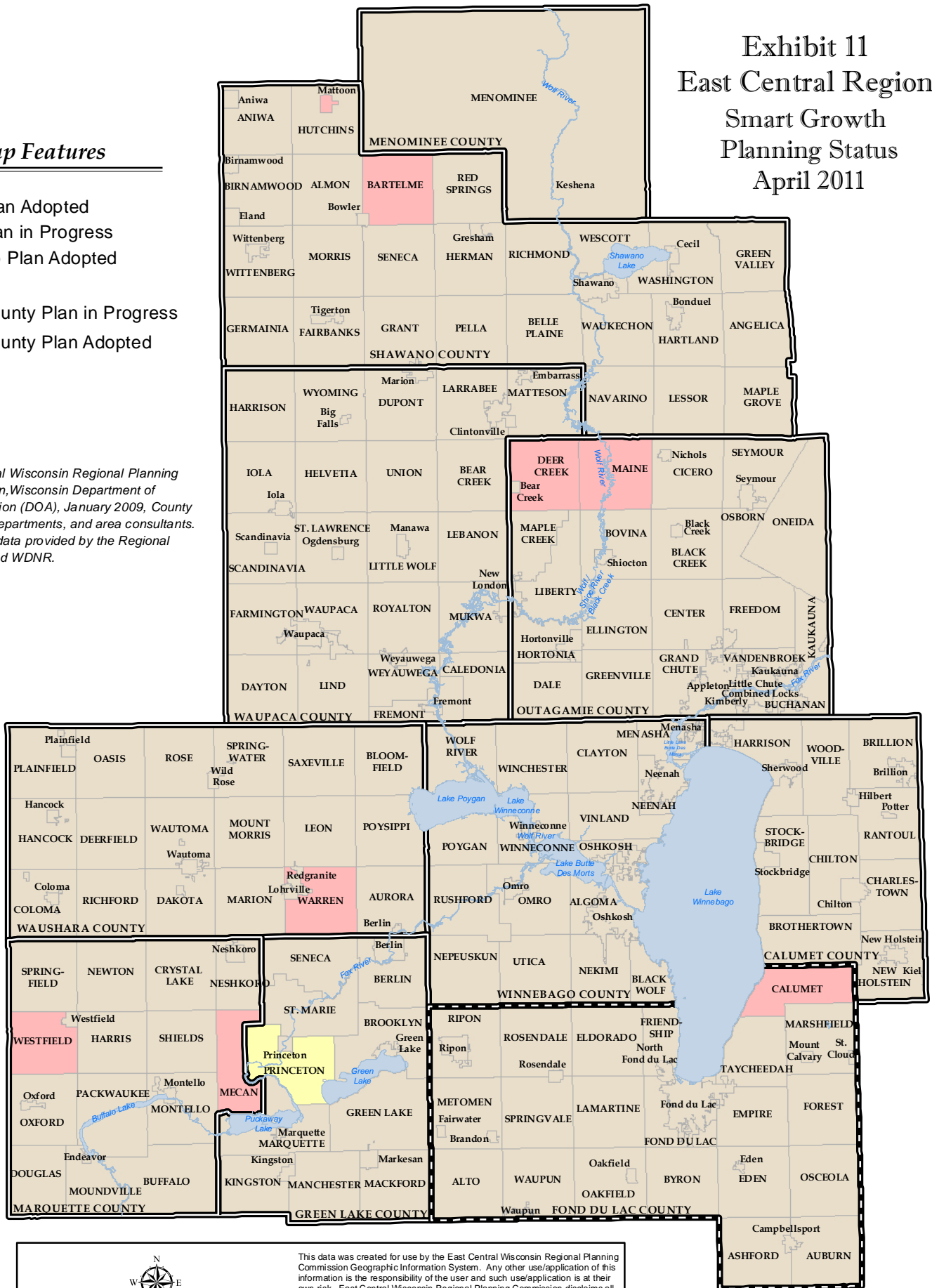
Exhibit 11 East Central Region Smart Growth Planning Status April 2011

Map Features

- Plan Adopted
- Plan in Progress
- No Plan Adopted
- County Plan in Progress
- County Plan Adopted

Sources:

East Central Wisconsin Regional Planning Commission, Wisconsin Department of Administration (DOA), January 2009, County Planning Departments, and area consultants. Base map data provided by the Regional counties and WDNR.



This data was created for use by the East Central Wisconsin Regional Planning Commission Geographic Information System. Any other use/application of this information is the responsibility of the user and such use/application is at their own risk. East Central Wisconsin Regional Planning Commission disclaims all liability regarding fitness of the information for any use other than for East Central Wisconsin Regional Planning Commission business.

Features on map are approximate locations and are to be used for reference purposes only.

Prepared April, 2011 By:



East Central Wisconsin Regional Planning Commission
400 Ahnaip Street, Suite 100
Menasha, Wisconsin 54952

Community Facilities Planning Program

Sewer Service Area (SSA) Management

Regional Significance: The Commission administers the State's NR-121 Sewer Service Area Planning program under a memorandum of agreement and contract with the Wisconsin Department of Natural Resources (WDNR). The Commission staff and Community Facilities Committee serve as both a review entity, for and advisors to, the WDNR for the development of twenty-six separate SSA Plans and subsequently requested SSA boundary amendments. The Commission also conducts plan conformance reviews on certain activities related to wastewater treatment and sewer infrastructure planning and construction.

Regional Projects and Activities:

- ◇ Staff finalized and submitted the Draft Shawano Lake 2030 SSA Plan (Shawano County) to the Wisconsin Department of Natural Resources for final approval and certification.
- ◇ Staff had several discussions with the Village of Sherwood's (**Calumet County**) engineering consultant and provided information needed to update the *2001 On-site System Condition Assessment for Fire Lane 12 and Fire Lane 13 Study Area*. The Commission formally supported the idea of resurrecting the study.
- ◇ East Central provided population projections for the Village of Hilbert related to a future wastewater treatment facilities study (**Calumet County**).
- ◇ Staff attended several meetings (including the Heart of the Valley Chamber of Commerce: Meet Your Legislators Forum) related to the State's proposed phosphorus limits and impacts they will have on the region's municipalities (**Outagamie County**).
- ◇ Staff performed sewer service area, planning area and sanitary district boundary updates within the region including GIS data conversion of older ArcInfo datasets thus bringing them into conformance with the latest ArcMap10 software.
- ◇ One SSA Plan amendment consisting of two actions was received and reviewed by the Commission for the following entity:
 - **Winnebago County** – City of Oshkosh, (an interceptor easement route and Planning Area Boundary adjustment).
- ◇ Staff worked with the following entities during the course of the year on potential or processed Sewer Service Area Plan amendments:
 - Staff worked with the Town of Clayton (**Winnebago County**) and other entities to review and discuss potential sewer service an existing subdivision west of the City of Neenah
 - Staff reviewed court briefs filed in the City of Kaukauna (**Outagamie County**) vs. WDNR case regarding the Darboy Sanitary District's (**Outagamie and Calumet Counties**) SSA amendment request and subsequent appeals. A judicial hearing was held on Oct. 15, 2010 and the judge's decision supported the District's proposal for service, essentially overruling the Commission's determination.
 - Staff reviewed materials for the Embarrass-Cloverleaf (**Shawano and Waupaca Counties**) and Poygan (**Winnebago and Waushara Counties**) Sewer service Area Plan updates which require re-submittal in order to have them certified by the WDNR.
 - Staff facilitated a joint meeting with the Town of Winchester and the Town of Clayton (**Winnebago County**) to discuss existing and future sewer growth areas.
 - Staff provided GIS information and data to the **Calumet County** Planning staff regarding SSA Plans, planning activities and issues. This comprehensive data-set was provided to the Wisconsin Department of Natural Resources.
 - Staff attended several meetings concerning the possible extension of public sewer to **Shawano County's** Maple Lane Health Care Facility.
- ◇ Staff reviewed NR-110 Wastewater Treatment Facility Plans or plan amendments for the following entities:
 - Staff reviewed population projections and recommended alternatives regarding the City of New London's Wastewater Treatment Facilities Plan (**Outagamie and Waupaca Counties**).
 - Staff reviewed the Maple Lane Health Center Sewer/Water Feasibility Study as part of the 2030 the Shawano SSA Update (**Shawano County**).
- ◇ Various staff conducted advisory reviews of seven preliminary/final plats for the following entities:
 - **Outagamie County**
 - 2 - Town of Grand Chute

- 1 – Town of Center
- 2 – Town of Dale
- 2 – Town of Vandenbroek

Local Assistance Projects/ Activities:

Staff reviewed ordinance and policy language developed by the Town of Greenville (*Outagamie County*) which incorporates SSA planning principles.

Community and Public Facilities

Regional Significance: The viability of the region, in terms of economics and quality of life, are dependent on a highly developed infrastructure of basic community and public facilities. Existing and new development requires municipal services that are often administered at a regional scale, including: the efficient removal and permanent storage of waste and recyclables; a dependable supply and efficient transmission of natural gas and electric; a fast reliable telecommunications network that employs the latest technology; a reliable system that quickly responds to fire, police and other emergency situations; and an accessible and affordable healthcare system.

Regional Projects and Activities:

- ◇ Staff attended meetings of the Fox River Valley Branch of the American Society of Civil Engineering. Staff also chaired the Wisconsin Section History and Heritage Committee. As part of this responsibility, staff assisted the Section in organizing their archives.
- ◇ The Commission monitored solid waste and recycling legislation through membership with the Associated Recyclers of Wisconsin (AROW). As part of this membership, staff participated in:
 - Organics Subcommittee;
 - Education Subcommittee;
 - Toured the Columbia County Compost Facility; and
 - Wrote a letter in support of the proposed composting standards.
- ◇ Staff participated in monthly meetings of ECOS-Fox Valley, a group of local citizens, businesses and government that meets in the City of Menasha Public Library and promotes sustainability throughout the Fox Cities (*Calumet, Outagamie and Winnebago Counties*). As part of this membership, staff participated in:
 - The Executive Committee of ECOS-FV; attended and helped organize and facilitate monthly meetings; and
 - Organized an Earth Week Fox Valley Partnership to jointly coordinate and advertise Earth Week activities for 2011.
- ◇ Staff worked with members of the Solid Waste and Recycling Technical Advisory Committee to examine the potential of developing a Waste Management Facility Inventory.
- ◇ Staff organized a regional partnership and submitted a Sustainable Communities Planning Grant (*Winnebago, Calumet, and Outagamie Counties*).
- ◇ Staff attended the following as part of involvement in energy and sustainability planning:
 - Local Food, Food Insecurity and Sustainable Communities;
 - Ribbon cutting ceremony for the unveiling of the 2010 Wisconsin Trends Home;
 - Local Energy Tour in the Fond du Lac area to learn about local examples of alternative energy projects and other things that can be done to conserve energy;
 - Webinar on Wind and Utility Corridors that was sponsored by the American Planning Association;
 - Workshop on Retrofitting Suburbia into Sustainable Places;
 - Fostering Sustainable Behavior: Community Based Social Marketing;
 - Fox Valley Advanced Community Sustainability Training Workshop;
 - Staff attended and helped facilitate a discussion group at the De Pere Sustainable Communities Roundtable. The purpose of the roundtable was to gather responses from throughout the state about local sustainability efforts; and
 - Sustainable Communities Public Policy Forum.

Local Assistance Projects/ Activities:

- ◇ Staff participated and assisted in preparing a survey that was sent out to businesses, schools, restaurants, and others to determine interest in energy/compost and job production through food Waste (*Outagamie, Winnebago, Calumet and Waupaca Counties*).
- ◇ Staff worked with a student intern from UW-Oshkosh to prepare a carbon footprint analysis for the City of Neenah (*Winnebago County*).
- ◇ Staff met with a student from Menasha High School (*Winnebago County*) to discuss sustainability efforts that communities within the region are doing.



Village of Kimberly, Fire Department

Exhibit 12

East Central Region

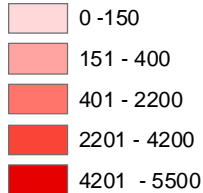
Community Facilities

Recycling Rates

(Annual Pounds per Person)

Map Features

Pounds Per Capita*

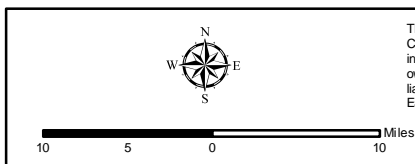
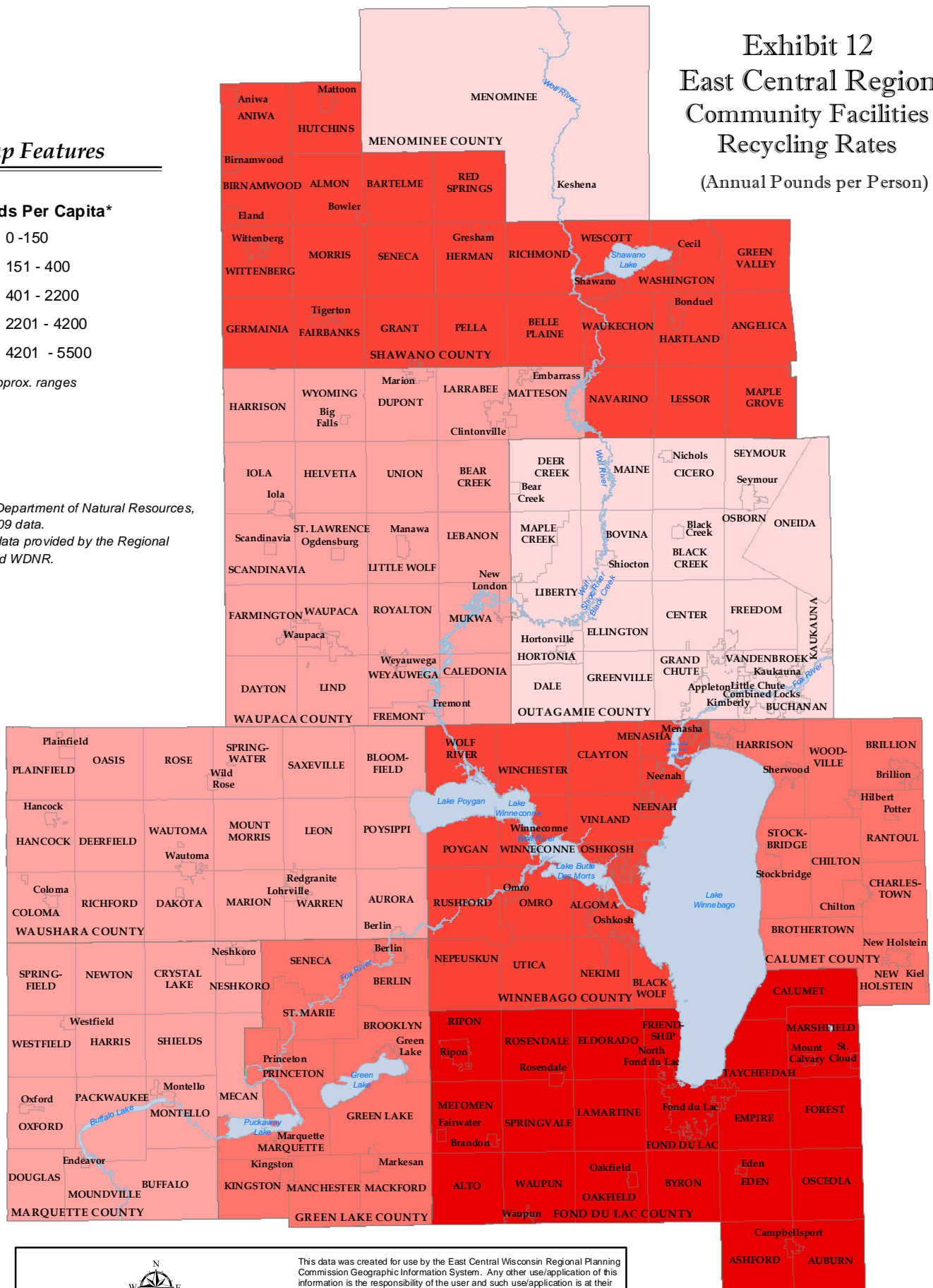


*Approx. ranges

Sources:

Wisconsin Department of Natural Resources, WIDNR, 2009 data.

Base map data provided by the Regional counties and WDNR.



This data was created for use by the East Central Wisconsin Regional Planning Commission Geographic Information System. Any other use/application of this information is the responsibility of the user and such use/application is at their own risk. East Central Wisconsin Regional Planning Commission disclaims all liability regarding fitness of the information for any use other than for East Central Wisconsin Regional Planning Commission business.

Features on map are approximate locations and are to be used for reference purposes only.



Prepared April, 2011 By:

East Central Wisconsin Regional
Planning Commission
400 Ahnaip Street, Suite 100
Menasha, Wisconsin 54952

Transportation Planning Program

Regional Highway Corridor Planning

Regional Significance: East Central's primary role in highway corridor studies is to provide a multi-jurisdictional forum for stakeholders and promote coordination and cooperation between state and federal agencies, local units of government and the public. This includes public involvement and informational meeting activities and the creation of local advisory committees. The goal is to ensure that everyone that may be impacted by, or is interested in, the project is notified so that the opportunity to provide input and comment on the plan(s) is available.

Regional Projects & Activities:

- ◇ In late 2010 staff worked with WisDOT and their consultant to complete the final phase of the Northeast Regional Travel Demand Model. The NE Region Model includes the entire USH 41 corridor from Green Bay through Fond du Lac and includes most of the WisDOT Northeast Region counties. This larger model will enhance the ability to forecast travel demand and evaluate impacts of land use on major highway facilities within *Calumet, Fond du Lac, Outagamie, Shawano, Waupaca, and Winnebago Counties*.
- ◇ East Central serves on the USH 151 Advisory Committee and work continues to identify safety improvements and access locations for the long term conversion of USH 151 through Fond du Lac to Waupun. (*Fond du Lac County*). The preferred alternative for the highway has now been selected and work will continue with local governments to plan for safe local road connections and access points.
- ◇ Staff attended WisDOT's USH 45 Preservation Plan meetings for the section of highway between Wittenberg in *Shawano County* to USH 10 in *Winnebago County*.
- ◇ Staff continued work with WisDOT and local governments to initiate the expansion of USH 10/STH 441 Tri-County Freeway to 6-lanes from Oneida Street in *Calumet County*, to County Highway CB in *Winnebago County*. In 2010 WisDOT updated the design and environmental documents to include reducing the curves through the CTH AP/Racine Street interchange area. The project includes the completion of the USH 41/USH 10 interchange and another bridge structure over Little Lake Butte des Morts. The Commission, the *Winnebago County* Board and local jurisdictions have passed formal resolutions supporting WisDOT's recommendations from the USH 41/USH 10/STH 441 study and have identified the completion of the project as a priority for *Winnebago County* and the Fox Valley.
- ◇ Staff continued to work with WisDOT planning for the STH 29 Corridor in *Shawano County*. The objective is to develop a long-term vision for the highway based on function and potential travel demand on the highway.
- ◇ Staff continues work with *Winnebago County*, WisDOT and various local governments to develop a long range plan for the STH 21 corridor from the City of Oshkosh through the City of Omro. An important component of the STH 21 study is the location and connection with a proposed major north-south arterial being considered on the west side of Oshkosh.
- ◇ East Central continues work with WisDOT and their consultants to prepare traffic forecasts for interchange and operational analysis of US 41 to improve the facility to interstate standards over a number of years. USH 41 from Green Bay through Fond du Lac includes three major expansion projects scheduled over the next several years. (*Outagamie, Winnebago, and Fond du Lac Counties*).
- ◇ In 2010 staff served on the State of Wisconsin's Local Roads and Streets Council (LRSC) and Executive Committee. The LRSC is advisory to the Secretary of the Department of Transportation to highlight the investment and importance of the over 100,000 mile local road system.
- ◇ Staff met with WisDOT to initiate the WIS 441/CTH KK transportation study for the southeast portion of the Fox Cities (*Outagamie, Winnebago, and Calumet Counties*).
- ◇ East Central worked with WisDOT to identify potential wetland mitigation sites throughout the region for inclusion in long-range transportation plans.
- ◇ Staff attended a public information meeting for the construction of a new WIS 22 bridge over the Wolf River in *Shawano County*.
- ◇ Staff attended meetings of the WIS 96 Fox River Bridge Study committee to review alternatives for a new bridge in the Village of Wrightstown (*Outagamie County*).
- ◇ Staff attended meetings of the WIS 116 Bridge Stakeholders Committee in the Village of Winneconne to discuss the planning process for the replacement of the bridge over the Wolf River (*Winnebago County*).
- ◇ Staff attended a Town of Empire Board meeting in *Fond du Lac County* to offer technical assistance in collecting and reporting Pavement Surface Evaluation Rating (PASER) data.

- ◇ Staff inputted PASER data into WISLR for the Town of Empire (*Fond du Lac County*)
- ◇ Staff worked on researching and developing a Transportation Asset Management Plan template.

Long-Range Transportation Planning

Regional Significance: As the Metropolitan Planning Organization (MPO) for the Fox Cities (Appleton) and Oshkosh urbanized areas and staff for the Fond du Lac urbanized area, Commission staff works with local governments and the public to comply with federal and state planning requirements for urbanized areas greater than 50,000 in population.

Regional Projects/Activities:

- ◇ East Central works with WisDOT to develop and maintain land use and socioeconomic data required for the computer based travel demand models for transportation planning and analysis. Travel demand models (TDM) are very useful in the alternative analysis portion of the planning process. In 2010 staff worked with WisDOT and their consultants to develop the Northeast Region Model that includes all the counties adjacent to the USH 41 corridor from Green Bay through Fond du Lac and the lakeshore counties from Door to Sheboygan. The development and maintenance of the Northeast Region Travel Demand Model is a collaborative effort with WisDOT, East Central RPC, Bay-Lake RPC and the Brown County Planning Commission (Green Bay MPO).
- ◇ Staff continues outreach activities to ensure that requirements for environmental justice are incorporated into MPO planning activities and that all populations have access to the planning process.
- ◇ Staff continues to monitor and comment on the next Transportation Authorization bill that will replace the federal transportation bill Safe, Accountable, Flexible, and Efficient Transportation Equity Act: A Legacy for Users (SAFETEA-LU), which expired in late 2009 and has been authorized by Continuing Resolutions through 2010.
- ◇ Staff developed Long Range Transportation Plan (LRTP) interim updates for the Fox Cities, Oshkosh, and Fond du Lac MPO.
- ◇ Staff developed a comprehensive Environmental Mitigation Chapter for the Fox Cities, Oshkosh, and Fond du Lac MPO LRTP that address system level analysis of the relationship between planned projects and various natural features and resources and provides system level mitigation measures.
- ◇ Staff developed newsletter series, postcards and websites for the LRTP interim update for the Fox Cities, Oshkosh, and Fond du Lac MPO.

- ◇ Staff prepared Pavement Surface Evaluation Rating (PASER) data for the Fond du Lac, Oshkosh, and Fox Cities MPO LRTP.
- ◇ Staff compiled sufficiency bridge data for the Fox Cities, Oshkosh and Fond du Lac MPO LRTP update.
- ◇ Staff attended a Federal Highway Administration (FHWA), Applying Analysis Tools in Planning for Operations Workshop.
- ◇ Staff attended a number of webinars and workshops relating to Long Range Transportation Planning including:
 - Urban Area Boundaries and Census Geography Webinar;
 - Economic benefit of access management webinar;
 - Census Transportation Planning Package (CTPP) webinar hosted by the Federal Highway Administration; and
 - Staff attended WisDOT sponsored Cube Travel Demand Model training workshop.

Local Assistance Projects & Activities:

- ◇ East Central continued work with the Town of Harrison (*Calumet County*) to develop the Midway/Schmidt Road Complete Streets Plan.
- ◇ Staff prepared mapping for the Town of Ellington (*Outagamie County*) as part of proposed access improvements to land near the Town Hall and Farmers Park. State highway 76 through the Town of Ellington was scheduled for improvements in the 2010 construction season.
- ◇ Staff continues work with officials from City of Menasha, Town of Menasha, City of Appleton, City of Neenah (*Winnebago County*) Fox Cities Greenways, and WisDOT to consider bike and pedestrian routes along WIS 47 from Valley Road to WIS 114 and connections to the City of Neenah.
- ◇ Staff worked with WisDOT Central Office and Northeast Region on functional class mapping for urbanized areas *Calumet, Fond du Lac, Outagamie and Winnebago Counties*.

Public Transit & Specialized Transportation Planning

Regional Significance: Transit planning concentrated on providing service to cost-effectively meet the needs of communities. Valley Transit, Oshkosh Transit System, and Fond du Lac Area Transit all continue to be in compliance with the American with Disabilities Act (ADA). Each of the systems surpasses the ADA requirements by providing complementary paratransit services for more hours and at higher service level than required for those individuals who are unable to use the fixed route systems. Specialized transportation services are also available at the county level throughout the region.

Regional Projects/Activities:

- ◇ Staff provided consistent updates/presentations to groups such as the Fox Cities Transit Commission, Fox Cities Chamber of Commerce, Fox Cities Paratransit Coordination Committee, Making the Ride Happen Board, Northeast Wisconsin Regional Access to Transportation (NEWRAT) Committee, Fox Valley Advocacy Coalition, Oshkosh City Council, Oshkosh Sustainability Board, Oshkosh Transit Advisory Board, **Winnebago County** Specialized Transportation Council, **Outagamie County** Specialized Transportation Planning and Policy Committee, **Waupaca County** Transportation Coordination Committee, **Calumet County** Aging and Disability Resource Center/Long Term Support Committee, and the **Shawano County/City** Transportation Advisory Committee, with regards to East Central projects related to public and specialized transportation. These updates focused on SAFETEA-LU requirements, Regional Transit Authority (RTA) enabling legislation discussions and proposals, and various capital and operational grant opportunities.
- ◇ East Central continued to work with (**Calumet, Fond du Lac, Green Lake, Marquette, Menominee, Outagamie, Shawano, Waupaca, Waushara and Winnebago Counties**) counties throughout the region to update, implement, and amend “Locally Developed Public Transit/Human Service Transportation Coordination Plans”.
- ◇ Staff assisted the Fox Valley Advocacy Coalition (**Calumet, Outagamie and Winnebago Counties**) in developing, implementing, and analyzing results of a survey sent out to various elderly and disabled populations throughout the region to determine what some of their primary transportation barriers are. Staff also assisted the Coalition with becoming a member of the National Alliance of Public Transportation Advocates (NAPTA).
- ◇ Staff attended and participated in a State Rail Plan workshop hosted by WisDOT.

- ◇ East Central began the planning process for the Oshkosh - Transit Development Plan (TDP) (**Winnebago County**), which is scheduled for completion in the spring of 2011.
- ◇ The Commission (MPO) maintained its cooperative planning agreement with the Fox Cities Transit Commission, Valley Transit, WisDOT and the City of Appleton to insure an open public transportation planning process per FHWA requirements.
- ◇ The Commission (MPO) maintained its cooperative planning agreement with Oshkosh Transit, WisDOT and the City of Oshkosh (**Winnebago County**) to insure an open public transportation planning process per FHWA requirements.



- ◇ Staff worked with Oshkosh Transit and UW-Oshkosh (**Winnebago County**) staff to develop and convert data needed to get Oshkosh Transit on Google Transit, which is a transit trip planning tool.
- ◇ Staff provided data to Valley Transit (**Calumet, Outagamie and Winnebago Counties**) and their consultant for inclusion in an Operations Analysis Plan.
- ◇ In conjunction with the Bay-Lake Regional Planning Commission, East Central staff continues to facilitate the Northeastern (WI) Regional Access to Transportation Committee, which meets regularly to discuss regional specialized transportation coordination efforts over an eighteen county area. Staff also created and continues to maintain a website for that group.
- ◇ Staff continued to participate in discussions regarding Regional Transit Authority (RTA) enabling legislation at the state-level. This included speaking at a public meeting in DePere hosted by the Sierra Club, WISPIRG, and Save Green Bay Transit, as well as providing information to the **Outagamie County**

Sustainability Committee, and attendance at a meeting hosted by the City of Appleton.

- ◇ Staff continued to draft letters to state and federal legislators with regards to legislative impacts and funding allocations for public transportation/specialized transportation services, such as regional transit authority (RTA) enabling legislation. Staff also testified to various Wisconsin legislative committees regarding these issues.
- ◇ Staff continued to assist with data and mapping for the various public and specialized transportation services throughout the region.
- ◇ Staff continues to maintain a website for Making the Ride Happen (*Calumet, Outagamie and Winnebago Counties*).



- ◇ Staff continued to monitor the impacts on public/specialized transportation caused by the implementation of Family Care initiatives throughout the region.
- ◇ Staff continued to participate in a number of webinars, teleconferences, workshops, and conferences regarding public transportation/specialized transportation services.
- ◇ Staff participated in several appeals to the Valley Transit ADA Certification Appeals Board.
- ◇ Staff continued to work with WisDOT and HNTB consultants to maintain and utilize the transit mode of the Fox Valley and Northeast Wisconsin Region travel demand model. This model played a major role in the TDP recommendations for both Valley Transit and Fond du Lac Area Transit completed in 2009. This model is being utilized for the Oshkosh TDP to be completed in 2011.
- ◇ Staff continued to serve on numerous request for proposal (RFP) evaluation committees for the provision of contracted transportation services.
- ◇ Staff participated in numerous interviews with local and regional media to discuss various transportation projects.

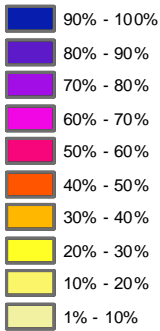
- ◇ East Central staff continues to participate in and/or serve on a number of other regional transit-related boards and committees, including:
 - Fox Cities Area Regional Transit Authority (RTA) Study Committee;
 - Fox Cities Area Regional Transit Authority (RTA) Study Committee – Working Committee;
 - Northeastern Wisconsin Regional Access to Transportation Committee (Co-Founder);
 - Northeastern Wisconsin Regional Access to Transportation Committee – Marketing and Research Subcommittee (staff served as Chair);
 - Northeastern Wisconsin Regional Access to Transportation Committee – Funding and Policy Subcommittee;
 - Fox Valley Advocacy Coalition (staff served as Chair);
 - Valley Transit Paratransit Coordination Committee;
 - Making the Ride Happen Board;
 - Wisconsin Urban and Rural Transit Association (WURTA); and
 - Valley Transit ADA Certification Appeals Board.

Local Assistance Projects/Activities

- ◇ East Central staff attended the grand opening/open house for the new Menominee Indian Tribe Transportation Center (*Menominee County*).
- ◇ East Central completed and submitted the 85.21 County Elderly and Disabled Transportation Assistance Program grant for *Outagamie County* and will be submitting it for 2011.
- ◇ East Central staff continues to participate in and/or serve on a number of other local transit-related boards and committees. These groups include:
 - Valley Transit Paratransit Coordination Committee (*Calumet, Outagamie and Winnebago Counties*);
 - *Calumet County* Aging and Disability Resource Center (ADRC)/Long Term Support Committee;
 - *Outagamie County* Specialized Transportation Planning and Policy Committee;
 - *Shawano City / County* Transportation Coordination Committee;
 - *Waupaca County* Transportation Coordination Committee; and
 - *Winnebago County* Specialized Transportation Council (staff served as Chair).

Map Features

Average Daily Origin

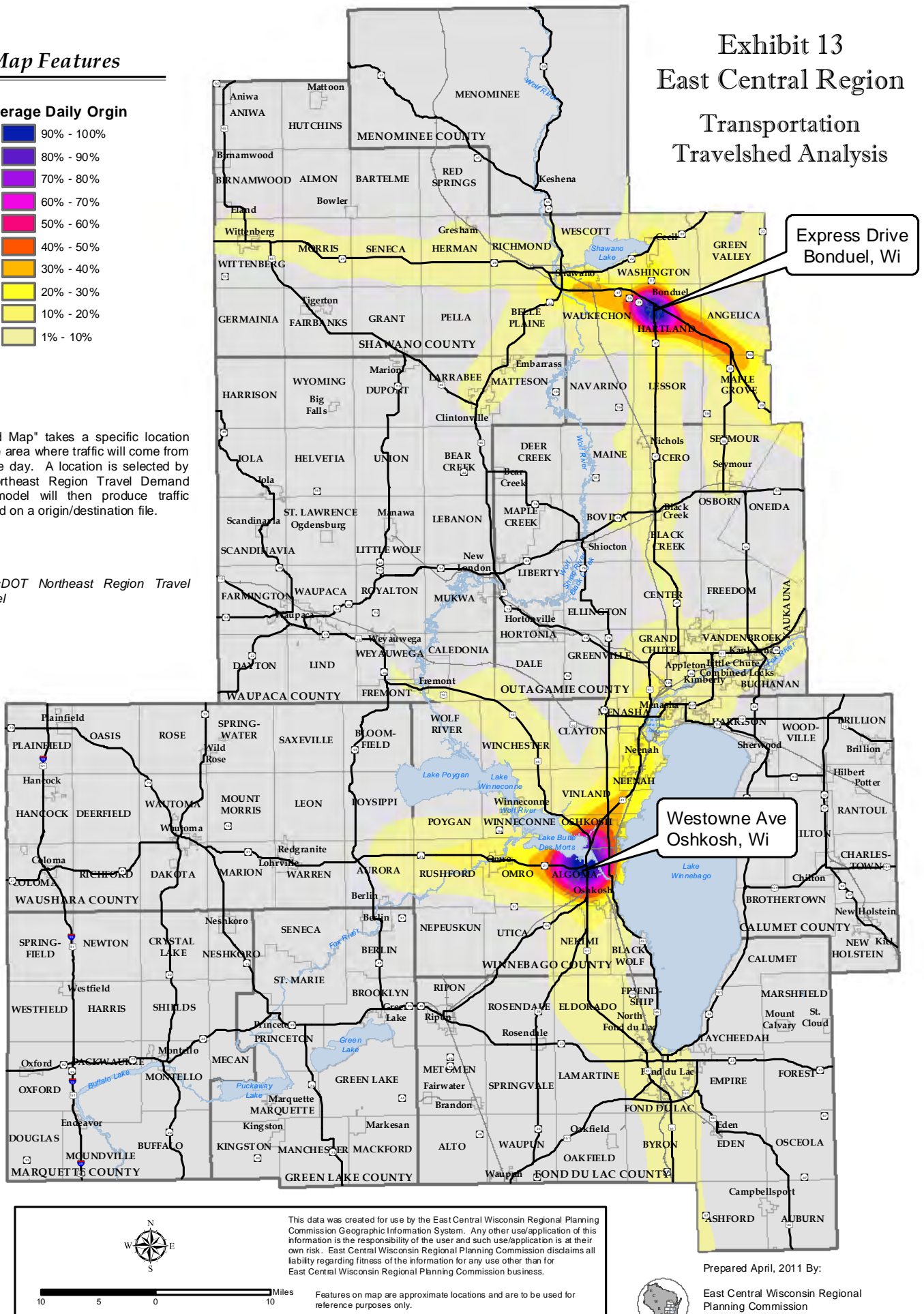


A "Travelshed Map" takes a specific location and shows the area where traffic will come from on an average day. A location is selected by using the Northeast Region Travel Demand Model, the model will then produce traffic numbers based on an origin/destination file.

Source:

ECWRPC/WisDOT Northeast Region Travel Demand Model

Exhibit 13 East Central Region Transportation Travelshed Analysis



Transportation Improvement Program

Regional Significance: Prepared annually, the Transportation Improvement Program (TIP) for the Fox Cities and Oshkosh Urbanized Areas includes all anticipated federal and state aids for highway, transit, and other transportation projects in the urbanized area, as a prerequisite for funding approval. The TIP process in 2010 again used the prioritization procedures for Surface Transportation Program (STP)-Urban projects submitted by the local municipalities. This process allows for full consideration of non-highway transportation projects, and rewards highway projects for including accommodations for alternative transportation modes. Projects considered for STP-Urban funding must be included in the community's capital improvement program.

Regional Projects & Activities:

- ◇ Staff updated and completed the 2011 Fox Cities and Oshkosh Urbanized Area Transportation Improvement Program (TIP) (*Calumet, Outagamie, and Winnebago Counties*).
- ◇ In 2010 staff also updated and completed the Fond du Lac Urbanized Area Transportation Improvement Program (TIP) (*Fond du Lac County*).
- ◇ Staff participated in a Financial Constraint web conference sponsored by FHWA that provided guidance and recommendations to show expenditures and revenues in Long Range Transportation Plans (LRTP) and Transportation Improvement Programs (TIP).

Bicycle & Pedestrian Planning

Regional Significance: East Central works with WisDOT, local governments and bicycle/pedestrian advocacy groups to develop and coordinate multi-modal trail systems and activities. Local trail segments are critical to providing linkages for a larger-scale, regional system that serves the alternative transportation needs of the region's communities and urbanized areas.

Regional Projects & Activities:

- ◇ Staff attended Bike and Pedestrian Law Workshop (Complete Streets Law).
- ◇ Staff met with officials from City of Menasha, Town of Menasha, City of Appleton, City of Neenah (*Winnebago County*), Fox Cities Greenways, and WisDOT to consider bike and pedestrian routes along WIS 47 from Valley Road to WIS 114 and connections to the City of Neenah.

- ◇ Staff attended a number of webinars relating to bicycle and pedestrian planning including:
 - GIS-based Bicycle Pedestrian Demand Forecasting and Traffic Count Program webinar.
- ◇ Staff applied for and tentatively received a 2012 Transportation Enhancement (TE) grant for a Bicycle and Pedestrian Plan for the Fox Cities and Oshkosh MPOs. (*Calumet, Outagamie, and Winnebago Counties*)

Local Assistance Projects & Activities:

- ◇ Staff attended the Fox Cities Greenways Trail Planners Meeting (*Calumet, Outagamie, and Winnebago Counties*).
- ◇ Staff presented on multi-modal transportation options at the Fox Cities Greenways Trails for Tomorrow Workshop (*Calumet, Outagamie, and Winnebago Counties*).
- ◇ Staff served on the City of Appleton On-Street Bicycle Plan Committee (*Calumet and Outagamie Counties*).
- ◇ Staff met with the North STARS committee to discuss bicycle and pedestrian concerns on CTH JJ Corridor (*Outagamie County*).
- ◇ Staff met with the Weyauwega Trails Committee to discuss potential Transportation Enhancement projects within the City. (*Waupaca County*).
- ◇ Staff attended the Town of Grand Chute Bicycle/Pedestrian Workshop (*Outagamie County*).
- ◇ Staff met with the Village of Gresham (*Shawano County*) to discuss bike/pedestrian issues and strategies to initiate a Safe Routes to School Program.

Regional Safe Routes to School Planning

Regional Significance: East Central worked with WisDOT to continue to develop a Regional Safe Routes to School (SRTS) Program. The purpose of the program is to coordinate between neighboring communities and school districts, reduce duplication of effort, and efficiently use SRTS funds.

Regional Projects & Activities:

- ◇ Staff worked with WisDOT to establish a Regional Safe Routes to School Program (*All East Central Counties*). Regional SRTS Activities included:
 - Conducted Regional SRTS Stakeholders Meetings;
 - Conducted Regional SRTS Advisory Committee Meetings;
 - Coordination of a Stakeholders Meetings;

- Published a “How to Develop a Local SRTS Program” booklet for local SRTS Programs.
- Development of a Bike to School Day Guidebook/Kit;
- Staff assistance to communities and school districts within the region to start up or continue SRTS activities;
- Staff developed data standards and collected SRTS related GPS data within a one-half mile of all schools participating in the Regional SRTS Program;
- Coordination of student and parent surveys with schools participating in the Regional SRTS Program and compilation of survey data.



Students biking to school at Edison Elementary School, Appleton. Photo provided by: Jennifer Krikava

- ◇ Staff attended Pro Walk, Pro Bike Conference.
- ◇ Staff served on the Safe Routes to School National Partnership Steering Committee.
- ◇ Staff served on the WisDOT Safe Routes to School Planning Selection Committee.
- ◇ Staff served on the Wisconsin SRTS State Network Project.
- ◇ Staff served on the Education Team for the WI SRTS State Network Project.
- ◇ Staff attended and presented at the 2nd Annual Bike Summit in Madison.
- ◇ Staff created an action plan template for Safe Routes to School local plans.
- ◇ Staff attended the WisDOT Grants Training for the Safe Routes to School and Transportation Enhancement/Bicycle Pedestrian Facilities Program.
- ◇ Staff prepared materials for the following events:
 - International Walk to School Day;
 - Bike to School Day and;
 - The Parent Pledge Program.
- ◇ Staff attended a number of webinars relating to Safe Routes to School issues including:
 - School Bicycle and Walking Policies Webinar;
- ◇ Staff continued to work on the Regional SRTS Baseline Report.
- ◇ Staff continued to work on the 5 E’s Workshop Series.
 - Education for Healthy Kids Summer Institute;
- ◇ Staff developed guidance for participation for the Regional SRTS Program.
- ◇ Staff conducted an interview with Fox 11 News, WLUK on the Bike to School Day events occurring in the region.
- ◇ Staff conducted an interview with NBC 26 regarding the Regional SRTS Program as part of their Growing Healthy Segments.
- ◇ Staff wrote a pedestrian safety article for the Town of Harrison Newsletter (*Calumet County*).
- ◇ Staff met with the Wisconsin Department of Health and Human Services to discuss partnerships between the health community and the Regional Safe Routes to School Program.
- ◇ Staff participated in a teleconference discussing the Health Impact Assessments (HIAs) and how they can be used as additional information to develop policies and projects.
- ◇ Staff worked on a marketing campaign for the Regional Safe Routes to School Program.
- ◇ Staff researched the UrbanThinkers Program to pilot with the Regional Safe Route to School Program.
- ◇ Staff attended the Teaching Safe Bicycling, Train the Trainer Workshop.

Local Assistance Projects & Activities:

- ◇ Staff coordinated the Safe Routes to School Plans and plan updates for the following communities/school districts:
 - Green Lake School District (*Green Lake County*);
 - Fond du Lac School District (*Fond du Lac County*);
 - Hortonville School District (*Outagamie County*);
 - Menasha School District (*Winnebago County*);
- ◇ Staff assisted and coordinated Safe Routes to School implementation activities for the following communities/school districts:
 - City of Appleton (*Outagamie County*);
 - City of Brillion (*Calumet County*);
 - Fond du Lac School District (*Fond du Lac County*);

- Hortonville School District (*Outagamie County*);
- City of Menasha (*Calumet and Winnebago Counties*);
- Ripon School District (*Fond du Lac and Winnebago Counties*);
- Omro School District (*Winnebago County*);
- Oshkosh School District (*Winnebago County*); and
- Winneconne School District (*Winnebago County*).

- ◇ Staff participated in a congressional visit with Congressman Tom Petri in Omro to highlight their walking school bus program, their bicycle maintenance shop, and their cyclocross course (*Winnebago County*).



A student at Omro Middle School working on a bike. Also pictured is Congressman Tom Petri, Bicycle Federation of Wisconsin Executive Director Kevin Hardman, and Owner and President of Wheel & Sprocket, Chris Kegel

- ◇ Staff participated in and prepared materials for the Bike Rodeo at Jefferson Elementary School in Oshkosh (*Winnebago County*).
- ◇ Staff served on the *Winnebago County* Community Health Improvement Planning Committee – Physical Activity Work Group.
- ◇ Staff served on the Walk to Win Steering Committee (*Calumet, Outagamie, and Winnebago Counties*).
- ◇ Staff served on the Educational Committee for Activate Fox Cities (*Calumet, Outagamie, and Winnebago Counties*).
- ◇ Staff attended the Education for Healthy Kids Summer Institute and coordinated Safe Routes to School activities with Healthy Kids Committees at Badger and Houdini Elementary Schools (*Outagamie County*).
- ◇ Staff met with the City of Neenah staff to discuss the next steps in developing a SRTS task force with the City of Neenah and Neenah School District (*Winnebago County*).
- ◇ Staff assisted with the SRTS grant application process with the following communities: City of Brillion, City of Fond du Lac, Village of Grand Chute, City of Green Lake, Village of Greenville, City of Omro, and City of

Oshkosh (*Calumet, Fond du Lac, Green Lake, Outagamie, and Winnebago Counties*).

- ◇ Staff presented the Regional Safe Routes to School Program at:
 - Oshkosh Sustainability Advisory Committee (*Winnebago County*);
 - Green Lake County
- ◇ Staff provided information about SRTS, the Regional SRTS Program, and the SRTS grant program to a representative from the Regional SRTS Advisory Committee from Menominee County to present to their district administration (*Menominee County*).
- ◇ Staff wrote an article for the Seiler Instruments Newsletter.
- ◇ Staff met with the City of Appleton and Outagamie County staff to discuss the potential use of Health Impact Assessments as a performance measure for the Safe Routes to School Program (*Outagamie County*).
- ◇ Staff conducted a meeting between the Town of Harrison (*Calumet County*), Kimberly School District, *Outagamie County* Sheriff's Department, and East Central to discuss safety concerns for students attending Sunrise Elementary School.

Regional and Technical Assistance

Regional Significance: The Commission provides assistance to counties and local units of government as part of WisDOT's Regional Transportation Program. In the context of the overall transportation system, some local roadway and land use decisions have regional impacts on economic development and the transportation system.

Regional Projects & Activities:

- ◇ Staff works with WisDOT annually to update the WisDOT 6-Year Program maps for both WisDOT Regions (*All East Central Counties*).
- ◇ Staff continues to work with WisDOT, the Local Roads and Streets Council (LRSC) and the UW-Madison Transportation Information Center to provide technical assistance to member jurisdictions using the Wisconsin Information System for Local Roads (WISLR) to complete the biennial road ratings and submit the data to WisDOT.
- ◇ Staff offers training and technical assistance to member jurisdictions in using the Pavement Surface Evaluation Rating (PASER) method to evaluate and rate their local roads and incorporate the data into WISLR.
- ◇ East Central serves on the Local Roads and Streets Council that is an Advisory Group to Wisconsin's

Secretary of Transportation, considering local road and funding issues.

- ◇ East Central continues to consider air quality issues and attends meetings related to the WDNR's air quality monitoring network and program.

Local Assistance Projects & Activities:

- ◇ Commission staff continues to work with member counties and communities to provide traffic information and forecast for various plans and projects.
- ◇ Staff regularly attends County Highway Committee or informational meetings to discuss transportation plans and programs.
- ◇ East Central continues to support the Friendship Trail connection to High Cliff State Park in the Town of Harrison, **Calumet County** and provided assistance to document plans and proposed funding in the Transportation Improvement Program (TIP) and ultimately the State Transportation Improvement Program (STIP).

Freight Planning

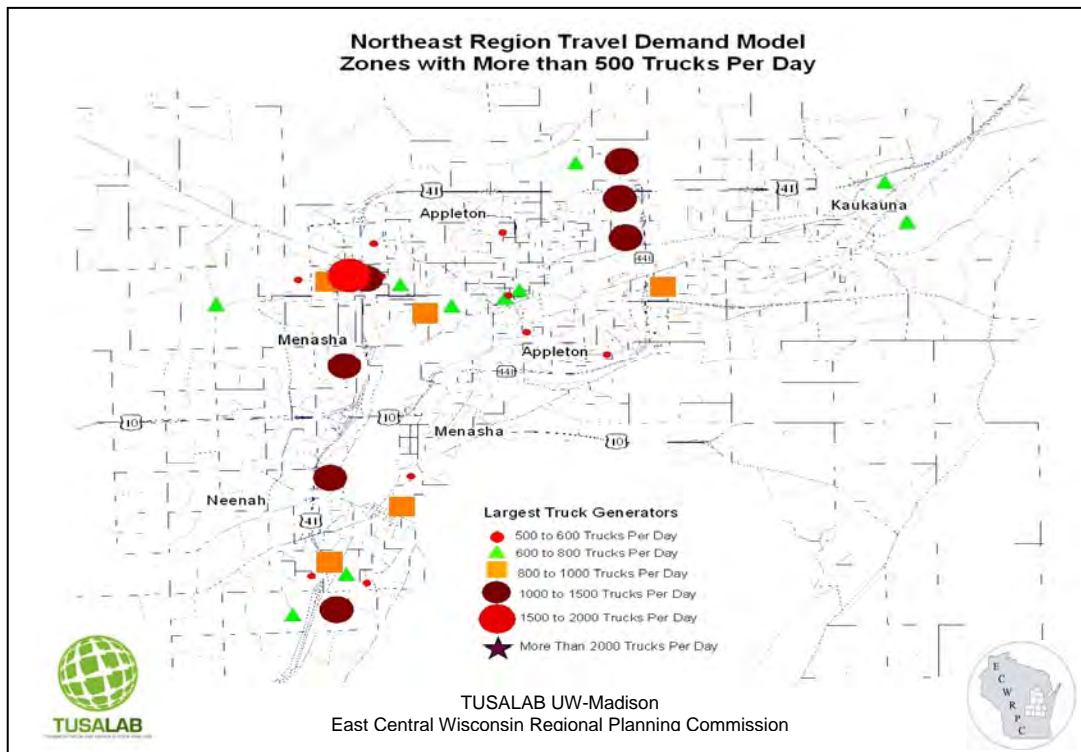
Regional Significance: The efficient movement of freight in and out of the region is a critical component of economic viability. Work continues with local

governments, state, federal agencies, and freight stakeholders to develop strategies to sustain and improve the freight transportation system.

Regional Projects & Activities:

- ◇ Through 2010 staff continued work with WisDOT and UW-Madison's Transportation and Urban Systems Analysis Laboratory (TUSA LAB) to study and model freight stakeholder behavior in northeast Wisconsin in an effort to identify deficiencies and improvements that might be made to the transportation systems.
- ◇ Staff serves on a Multi Modal Planning Committee and research project Selection Committee for the Midwest Center for Freight Infrastructure Research and Education (CFIRE) considering current and future freight demand and planning activities.
- ◇ Staff continues to incorporate freight into the planning process and is working with WisDOT to improve the truck component of the NE Region Model. Freight rail is also important and staff continues outreach and support of public/private rail initiatives.
- ◇ Staff attended the WisDOT Annual Freight Rail Conference to discuss trends and issues regarding freight rail service in the region.
- ◇ Staff continues a dialogue with WisDOT, Northeast Region and Central Office staff, and other stakeholders in support of the Midwest Rail Initiative and long range planning activities to restore passenger rail service to the Fox Valley and Green Bay.

Northeast Wisconsin Freight Study



Open Space & Recreation Planning Program

Regional Open Space Planning

Regional Significance: In 1977, the Commission adopted its first Regional Open Space & Recreation Plan. This plan has served the region well as a guide to the protection of many areas within the region for the purpose of providing public open space and recreational opportunities. The implementation of this plan has been occurring since its adoption over 30 years ago and is now supplanted by the Year 2030 Regional Comprehensive Plan. The plan recommendations, coupled with the local actions taken by counties and communities, have kept the Commission involved with the plan's implementation.

Regional Projects & Activities:

- ◇ East Central remained actively involved with efforts by Fox Cities Greenways and other local groups to preserve open space and coordinate trail development throughout the urbanizing areas of the Fox Cities and to connect to other statewide trails (*Calumet, Outagamie, and Winnebago Counties*).
- ◇ Staff participated in a regional Fox Cities trails mapping meeting in regards to updating the area trails including the Paper Trail planned and existing segments.
- ◇ Staff attended various workshops and events to obtain and share knowledge on parks and recreation issues:
 - 2010 Wisconsin Park and Recreation Association annual conference in La Crosse;
 - 'Working Lands' Workshop hosted by DATCP; and
 - Making New Places for Play: Joint Use Agreements between Schools and Parks webinar.
- ◇ At the request of the Wisconsin DNR, staff participated in conference calls as part of the Advisory Committee on the Statewide Comprehensive Outdoor Recreation Plan (SCORP).
- ◇ Staff attended and presented at the North East Wisconsin Wilderness Alliance (NEWWA) conference.

Local Assistance Projects & Activities:

- ◇ Staff attended a meeting on the Newton-Blackmour trail to discuss a one mile segment trail route into the City of New London. (*Outagamie & Waupaca Counties*)
- ◇ Staff attended monthly Northeast Wisconsin Parks and Recreation Organization (NEWPRO) user group meetings.

- ◇ Staff was part of a steering committee that formed to work with a consultant on the development of the **Waushara County** Food Connections study. As part of this effort, staff assisted the county in the preparation of a background report and brochure that will be used to disseminate information that had been obtained during the planning process.
- ◇ Staff provided a letter of support/commitment for a Hunger-Free Communities Planning Grant for **Waushara County** through USDA so that the food assessment planning that had been started under the Waushara County Food Connections grant could be continued. This multi-county collaboration will also be utilized to look at local projects that can be implemented in Waushara County.
- ◇ Staff attended meetings for the Oshkosh/**Winnebago County** Community Health Improvement Plan (CHIP) meetings. Additionally, staff assembled a Healthy Recreational Opportunity Inventory for the project.
- ◇ At the request of the Village of Shiocton, (*Outagamie County*) staff provided specifications on ball diamond construction for one of the village's neighborhood parks.
- ◇ At the request of the City of Menasha (*Calumet & Winnebago Counties*), staff met with the Parks and Recreation director to discuss and coordinate aspects of the Province Trail extension project.
- ◇ The Commission coordinated a planning charette as part of the City of Waupaca's (*Waupaca County*) South Park Masterplan development process.



- ◇ Local Outdoor Recreation Plan Updates - Assisting counties and local communities to keep their open space and recreation plans up to date has long been a staple of East Central's technical assistance program. These plans are prepared by East Central staff at no direct cost for those counties and municipalities who request this service and are selected through the

Commission's evaluation process. A current plan serves as a guide for orderly park acquisition and development and is also a requirement for participation in matching state and federal funding programs. The following updates or related activities were worked on by Commission staff during 2010:

- The City of New Holstein (*Calumet County*), the City of Seymour (*Outagamie County*) and the Town of Menasha (*Winnebago County*) were offered assistance with updating their Open Space Plans.



- ◇ Staff provided information on possible funding sources to the Town of Springwater (*Waushara County*) for park acquisition adjacent to the covered bridge.
- ◇ Commission staff reviewed and provided comments on the draft *Calumet County* Park and Open Space Plan.

Fox-Wisconsin Heritage Parkway (FWHP)



East Central has been intimately involved with efforts to preserve the Fox River locks system since the U.S. Army Corps of Engineers first petitioned for its abandonment in the early 1980s. Over the years this support has grown to encompass the Fox-Wisconsin Heritage Parkway.

Recent efforts have focused on seeking a National Heritage Area (NHA) designation for the FWHP from the National Park Service. As of 2010, there are 49 NHA's throughout the United States. **The FWHP would be the first NHA in the state of Wisconsin.** In concept, the parkway will focus on the scenic, recreational, and historic aspects of the river by improving access to and providing appropriate development of state and other publicly

owned lands as well as promotion of public and private historical sites and attractions adjacent to the locks and elsewhere along the river. The Commission has recently completed a draft update of *Fox River Heritage State Parkway Concept Plan*, 1997. The updated Action Plan reviews and updates existing goals as well as creating new goals for the FWHP.

Regional Projects & Activities:

This project and following activities will positively impact the development and local economies of *Outagamie, Winnebago, Calumet, Waushara, Green Lake and Marquette Counties* within our region.

- ◇ Staff was involved in the following long-range planning activities for the FWHP:
 - Staff prepared the draft FWHP Action Plan. This plan will guide development for the FWHP and make connections with communities within the FWHP;
 - Staff prepared a grant seeking program for the FWHP; and
 - Staff prepared Economic Development baseline indicators to track the progress of the FWHP.
- ◇ Staff continued to assist in project development efforts by:
 - Preparing and distributing regular electronic newsletters for the FWHP;
 - Soliciting letters of support for the FWHP;
 - Maintaining and updating inventories for the FWHP;
 - Preparing materials for the first annual FWHP Paddle events;
 - Preparing maps for the FWHP Water Trail portage system;
 - Participating in a process to select a website designer for the FWHP website; and
 - Working with an anthropology student from UW-Oshkosh on a FWHP project. The project, "Ecology, Culture & the Native Peoples of the Fox River Corridor", explored early native settlement in the Upper and Lower Fox River region and the importance of the river systems in their daily lives.
- ◇ Staff served on the FWHP Non-Profit Board and participated in the following activities:
 - Completed and submitted a non-profit application and supporting materials;
 - Involved in the preparation of background and support materials including by-laws, board member duties and best practices, vendor information, and guiding documents;
 - Staff filled secretary and treasurer duties for the FWHP non-profit board; and
 - Staff participated in a strategic visioning session for the FWHP non-profit board.

Fox Cities Inset

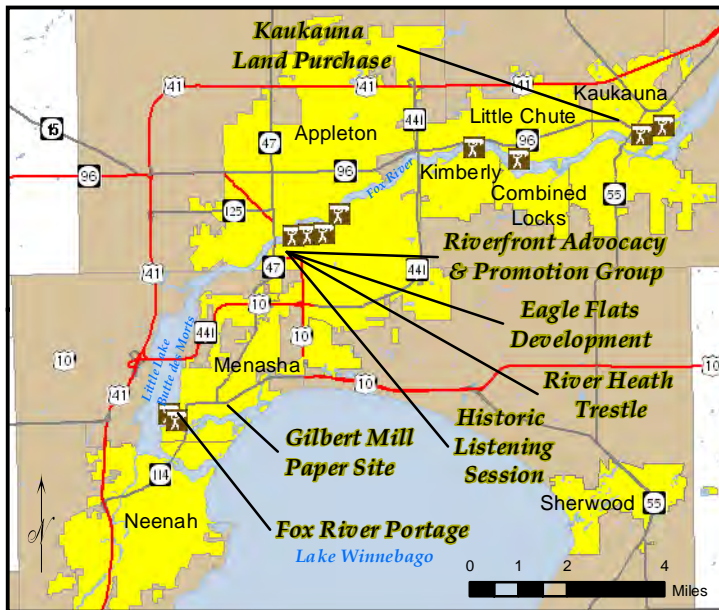
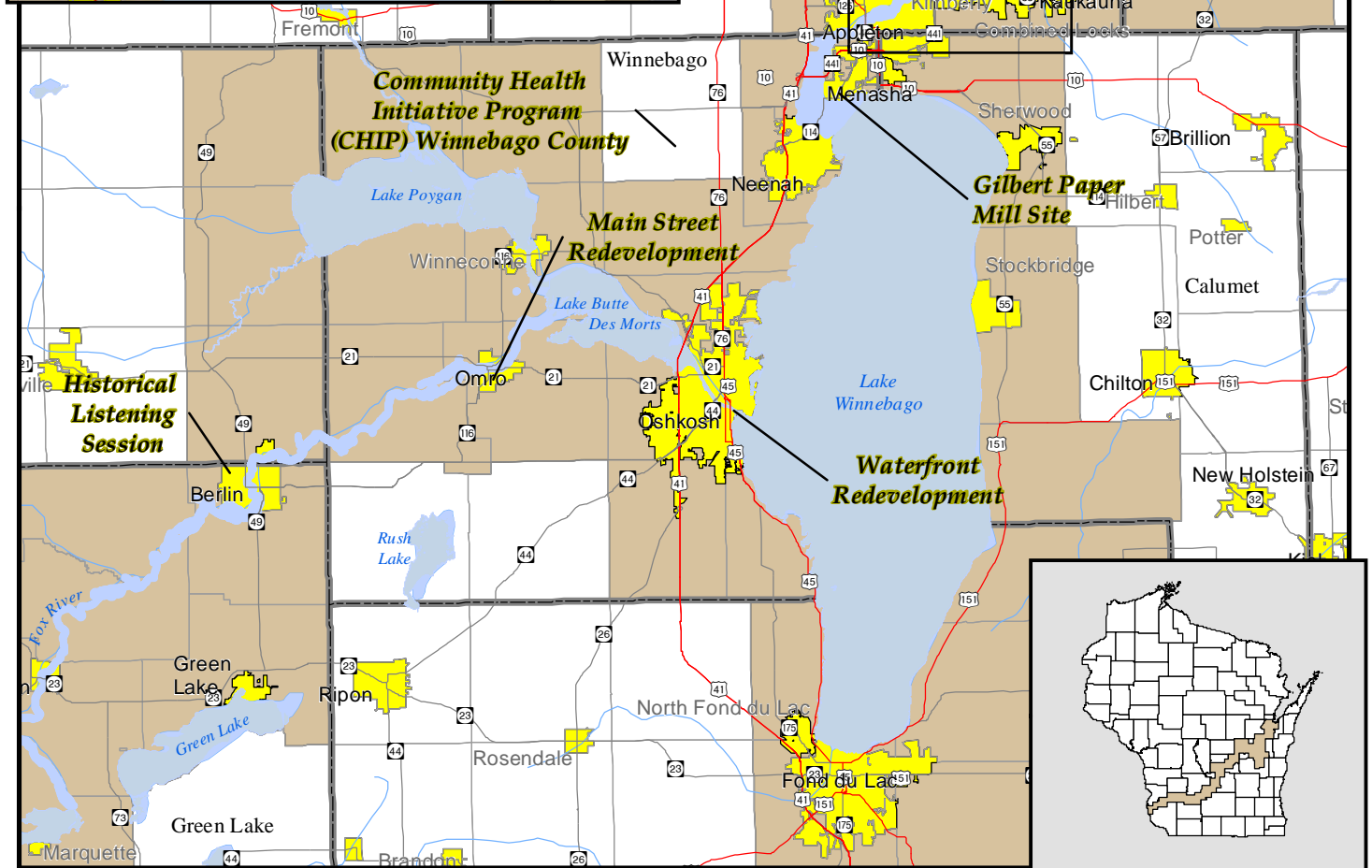


Exhibit 14 Fox-Wisconsin Heritage Parkway Lower / Upper Fox River Projects



Cities and Villages



Fox River Heritage Corridor Boundary



Interstate



US Highway



State Highway



County Boundaries

5 2.5 0 5 Miles

Sources: Parkway boundary provided by ECWRPC.
Basedata provided by the WIDNR and WIDOT.

This data was created for use by the East Central Wisconsin Regional Planning Commission Geographic Information System. Any other use/application of this information is the responsibility of the user and such use/application is at their own risk. East Central Wisconsin Regional Planning Commission disclaims all liability regarding fitness of the information for any use other than for East Central Wisconsin Regional Planning Commission business.

**Features on map are approximate locations and are to be used for reference purposes only.

Prepared April, 2011 By:

East Central Wisconsin Regional
Planning Commission
400 Ahnaip Street, Suite 100
Menasha, Wisconsin 54952



Ten presentations/public participation events regarding FWHP were conducted by staff in 2010, including audiences for the following events:

- Berlin Chamber of Commerce (*Waushara County*);
- City of Omro (*Winnebago County*);
- City of Menasha Waterfront Renewal Forum (*Winnebago County*);
- Bay Lake WI RPC;
- Wisconsin Department of Tourism;
- Appleton Kiwanis (*Outagamie County*);
- Green Bay Area Chamber of Commerce;
- Wisconsin Department of Natural Resources;
- Tall Ship Festival, Green Bay; and
- Appleton Historical Listening Session (*Outagamie County*)

◇ Staff also attended or hosted the following meetings in order to further the FWHP efforts:

- 14 FWHP Upper and Lower Fox River Committee meetings in 2010;
- Staff participated in U.S. Army Corps of Engineers interagency water level management conference calls for the Winnebago Pool Lakes;

◇ Staff attended a meeting with the FWHP Congressional delegation to celebrate the submission of the FWHP National Heritage Area (NHA) legislation.



Economic Development & Housing Program

Regional Economic Development

Regional Significance: As a designated Economic Development District (or EDD) for the Economic Development Administration (EDA) of the U.S. Department of Commerce, East Central Wisconsin Regional Planning Commission receives funding to carry out various planning activities and to assist local units of government with economic development activities. These efforts are funded in part by a Planning Partnership Award from EDA that is applied for annually, and are briefly summarized here.

Regional Projects and Activities:

- ◇ Comprehensive Economic Development Strategy (CEDS) 2010 Annual Report and Supplement – The 2010 CEDS Annual Report and Supplement was prepared to provide updated socioeconomic data and economic development initiatives that built upon the 2008 5-year CEDS update. The 5-year CEDS is designed to evaluate the regional economy by taking an inventory of the key issues and opportunities affecting the region. The plan provides key goals and objectives for regional economic development, and provides specific steps the Commission, in collaboration with regional partners, can take to implement the plan. The plan was prepared under the guidance of a committee, termed the CEDS Strategy Committee, which was composed of economic development professionals, private sector representatives, and government officials from throughout the region.

Current local and regional economic development and infrastructure projects are listed and prioritized in the 5-year plan and its subsequent annual reports, as is a listing of available economic development programs and resources. Eligibility of the region's counties and communities for EDA grants is ensured by the production and annual maintenance of the CEDS.

- ◇ The Commission completed the *Post-Disaster Economic Recovery Strategy for East Central Wisconsin*. The plan was developed with EDA funding, in response to the 2008 flooding and subsequent presidential disaster declarations for **Calumet, Green Lake, Fond du Lac, Marquette, Waushara, and Winnebago Counties**. Activities undertaken as part of the planning process include:

- Monthly coordination meetings with the Wisconsin Department of Commerce, Wisconsin Emergency Management, and other flood-affected regional planning commissions.
- Entering into a Memorandum of Understanding with the Wisconsin Department of Commerce to extend the Commission's efforts with the State of

Wisconsin beyond our EDA funding period.

- Presentation of the plan's recommendations and findings at: a joint press conference with the Wisconsin Department of Commerce held in Spring Green; the League of Municipalities 2010 Pre-Conference Workshop; and the Governor's Conference on Homeland Security and Emergency Management.
- Preparing for and hosting, in cooperation with the Wisconsin Department of Commerce, a pilot workshop in **Calumet County** designed to bring together Emergency Management and Economic development professionals to discuss the importance of economic resiliency in the wake of natural disasters.
- Coordinating a stakeholder meeting to explore the potential for a USDA-CSREES "Disaster Resilience for Rural Communities" in cooperation with other RPC partners and the Department of Commerce.
- Participating in an NWTC advisory committee meeting to create two new 2-year Associate Degree programs in viticulture (grape growing) and oenology (wine-making). This effort is a workforce development offshoot of previous Commission work developed through the Niagara Escarpment Management Program.
- Project Development – Staff utilizes projects from its Annual CEDS process and coordination with regional economic development organizations to identify potential local and regional scale economic development-related studies and projects that may be eligible for federal, state, and/or other funding. In 2010, the following regional projects were furthered or considered with Commission assistance:
- The Commission, in collaboration with the Bay Lake Regional Planning Commission, applied for and received \$135,000 in funding from the EDA to develop a Global Trade Strategy for our combined 18-county region. The two RPCs, working with a consultant selected via competitive bid, will develop the strategy using cutting edge economic analysis tools and broad based input from key industry leaders and economic development practitioners. The project will officially begin in Spring of 2011, and wrap up in early 2012.
- Commission staff coordinated with regional partners to explore opportunities for a regional approach to the new Department of Natural

Resources (DNR) Wisconsin Plant Recovery Initiative Assessment Monies for the Wisconsin Automated Machine (WAM) brownfield grant (*Calumet, Outagamie, Waupaca, Shawano and Winnebago Counties*).

◇ Regional Coordination – East Central serves to share and disseminate information regarding economic development opportunities, and assist in continued regional economic development activities. East Central staff continues to serve as an active member of the following regional economic development organizations and efforts:

- Northeast Wisconsin Regional Economic Partnership (NEWREP) – NEWREP, which ECWRPC staff is currently serving as president, was initially designed to implement the state's Technology Zone Tax Credit Program, which has since been dissolved. NEWREP's role has broadened from its original purpose, and has grown to focus on economic development strategies that strive to improve the economy of the 18 counties which are members. Activities include the Northeast Wisconsin Business Plan Competitions (2010 contest co-chaired by Commission staff), and collection and dissemination of business attitudes through the Executive Pulse Software.
- New North, Inc. – Staff has worked collaboratively with New North, Inc. to advance their mission “to promote cooperation and economic development in the 18-county region of Northeast Wisconsin,” with business recruitment and retention efforts by filling data requests and providing resources as needed. Quarterly meetings between the Directors of the Commission, Bay-Lake RPC and New North, Inc. were also held to discuss and communicate projects, activities, and opportunities for coordination.
- Staff coordinated a facilitated discussion between New North, NEWREP and other economic development organizations to discuss roles and responsibilities for economic development within the region. It was also designed to provide joint recommendations to the Wisconsin Department



of Commerce as they transition to the Wisconsin Economic Development Corporation.

- Fox Valley Workforce Development Board – The Board functions as a “catalyst between public and private partnerships” with a goal of having quality training and employment opportunities for today. Staff continues to serve in an advisory capacity for the Board's Economic Development Committee.
 - Fox Cities Economic Development Partnership (FCEDP) – The Partnership is charged with managing the economic development and marketing of the greater Fox Cities Area (*Calumet, Outagamie and Winnebago Counties*). Commission staff has recently worked with the group to update their industrial park mapping to help promote the Fox Cities to prospective businesses.
 - The Commission actively participated in meetings of the Fox Cities (*Calumet, Outagamie and Winnebago Counties*) Chamber of Commerce Local Issues Committee meetings, the Heart of the Valley (*Outagamie County*) Chamber of Commerce Legislator meetings, and the Oshkosh (*Winnebago County*) Chamber's Governmental Affairs Committee.
 - The Wisconsin Department of Transportation (WisDOT) USH 41 Corridor Project Disadvantaged Business Enterprise (DBE) committee. This effort aims to provide opportunities for women and minorities to capitalize on employment opportunities resulting from the highway construction project. (Brown and *Winnebago Counties*).
- ◇ The Commission staff attended, actively participated in, and in some cases helped plan and coordinate a number of workshops and conferences in order to keep informed on economic development issues and opportunities, as well as to collaborate on broader project initiatives:
- The Fourth Annual Tri-County Regional Economic Development Corporation's Economic Development Summit, focusing on entrepreneurialism (*Waushara, Green Lake, and Marquette Counties*).
 - The 2010 Governor's Conference on Economic Development sponsored by the Wisconsin Economic Development Association (WEDA). The conference focused on how to make communities more resilient in today's economy.
 - The 2010 Global Trade Conference – The conference was held to provide information and assistance to businesses exporting Wisconsin products, or importing materials or products to be used by Wisconsin businesses. Commission

Exhibit 15

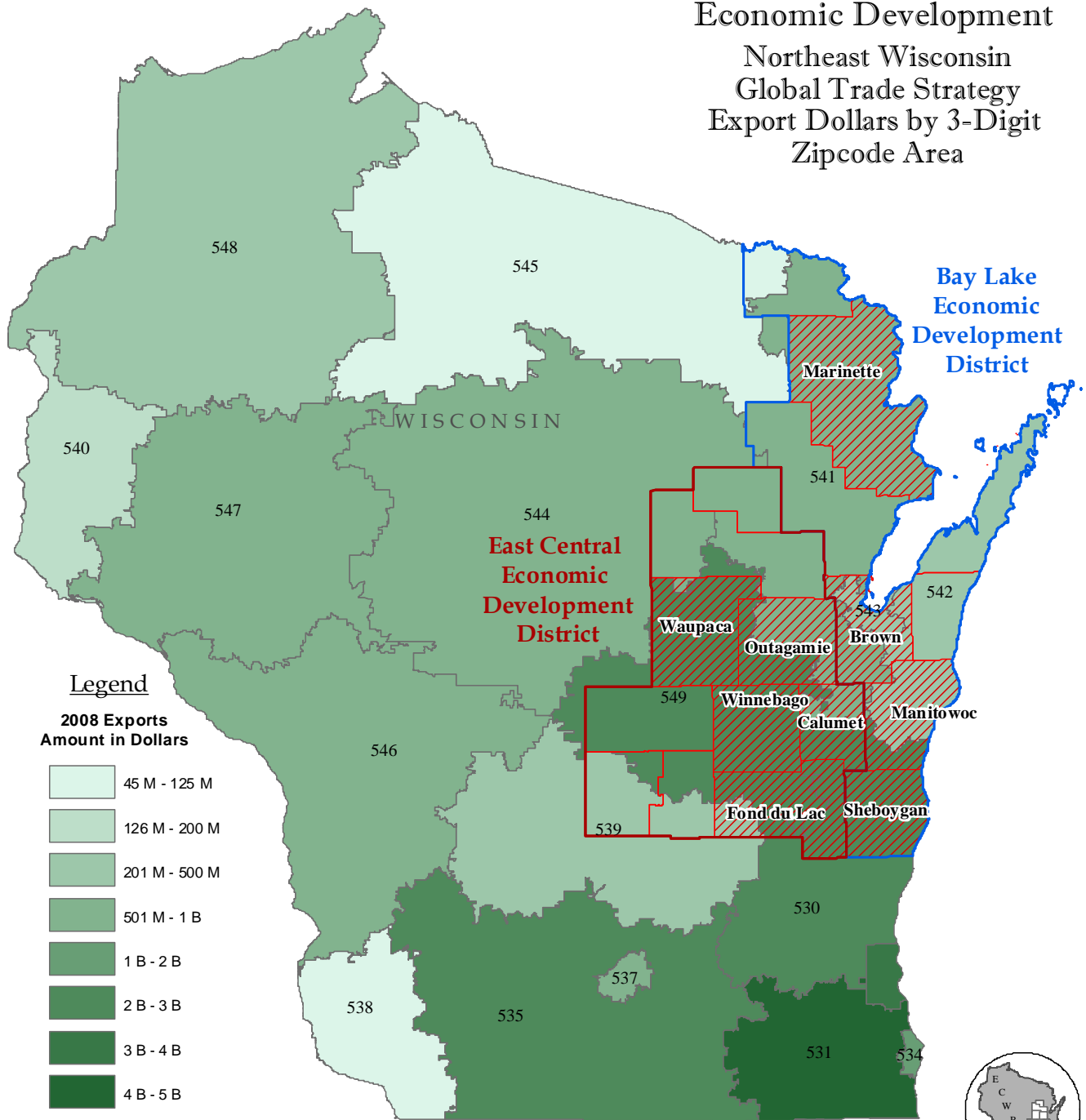
East Central Region

Economic Development

Northeast Wisconsin

Global Trade Strategy

Export Dollars by 3-Digit Zipcode Area

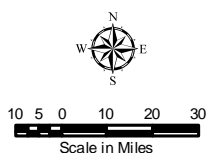


Study Region

East Central WI RPC EDD

Bay Lake RPC EDD

TAA Certified Counties - (Brown, Calumet, Fond du Lac, Manitowoc, Marinette, Outagamie, Sheboygan, Waupaca, & Winnebago)
Significantly impacted by global trade according to the Department of Labor



Sources: Base map data provided by the Regional counties and WisDOT, Export Dollars provided by US Department of Commerce, International Trade Administration, Trade Stats; 2008 for 3-digit Zipcode.

This data was created for use by the East Central Wisconsin Regional Planning Commission Geographic Information System. Any other use or application of this information is the responsibility of the user and such use/application is at their own risk. East Central Wisconsin Regional Planning Commission disclaims all liability regarding fitness of the information for any use other than for East Central Wisconsin Regional Planning Commission business.

Prepared April 2011 By:

East Central Wisconsin Regional Planning Commission
400 Ahnaip Street, Suite 100
Menasha, Wisconsin 54952-3100
Telephone # (920)-751-4770
Fax # (920)-751-4771



staff participated in the planning, development, and promotion of the 2010 Northeast Wisconsin Global Trade Conference. The Commission was a sponsor of the conference.

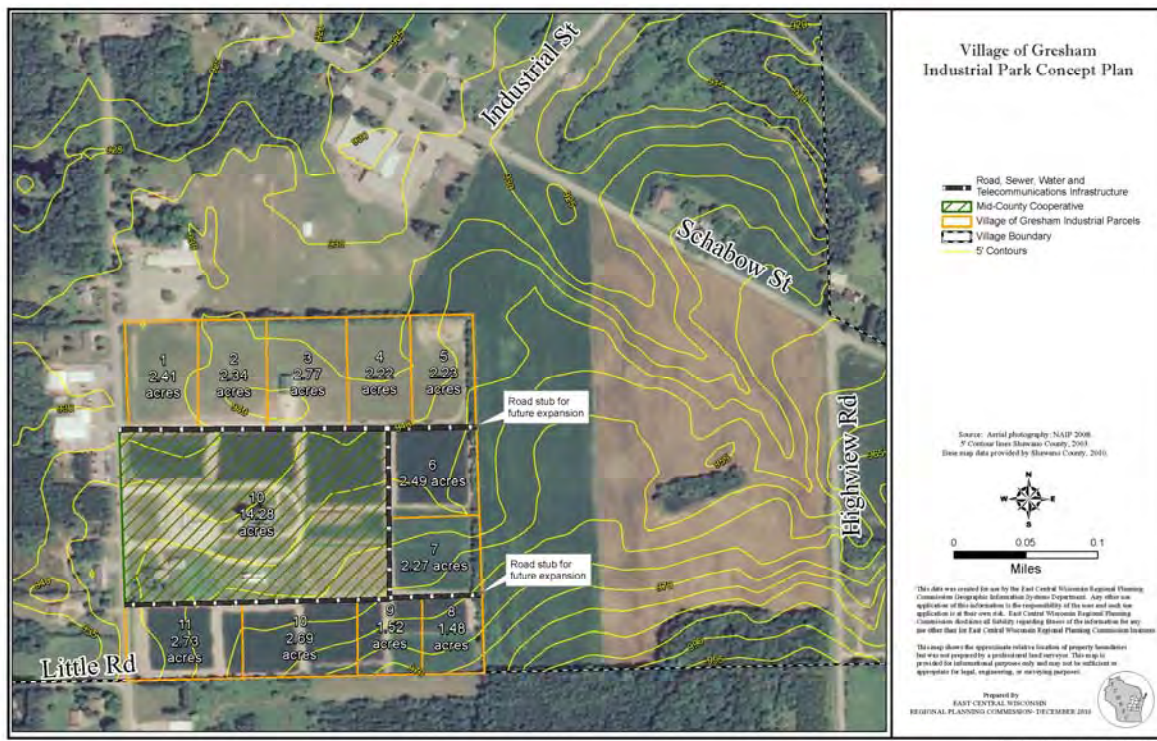
- The Seventh Annual New North Economic Development Summit 2010.
- Staff coordinated and attended the Northeast Wisconsin “Locate in Wisconsin” Training Session at Fox Valley Technical College. The workshop was designed to familiarize economic developers with the State of Wisconsin’s new tool to promote the availability of vacant buildings and sites.
- The Upper Midwest Basic Economic Development Course at the University of Minnesota – Duluth.
- The EDA Midwest Regional Conference in St. Louis. Commission staff presented on the process for developing a non-construction EDA grant application.
- “How Economic Developers Maximize Success with Social Media” webinar.
- The Global Economic Development Roundtable for Northeast Wisconsin, hosted by the University of Wisconsin System.
- The “Wisconsin Way” Economic Summit.
- A series of UW-Extension Webinars, including: Retaining and Attracting People as an Economic Development Strategy; Rebuilding Downtowns and Niche Markets; and Matching Customers and Businesses.
- The EDA sponsored “Pursuing Regional Innovation and Competitiveness,” webinar.
- The USDA sponsored “Regions Connecting for Rural Innovation” conference.
- A Waupaca County Board meeting to hear a “Be Bold Wisconsin” presentation.

Local Assistance Projects & Activities:

- ◊ Also referred to as the Economic Development Technical Assistance Program (partially funded through EDA), East Central responds to numerous requests for information, referrals, and assistance regarding economic information and funding sources to counties, communities, businesses, development organizations, and individuals throughout, and outside of, the region such as:
 - Commission staff assisted the City of Omro (**Winnebago County**) in their preparation of a Main Street Program Application. Staff provided

the city with socioeconomic data, business listings, and prepared a downtown business mix and trade area map for inclusion in the application.

- Staff prepared a program and cost-estimate proposal, at the request of **Outagamie County**, for the administration of the Outagamie County Revolving Loan Fund.
- Commission staff has served in an advisory capacity for the Oshkosh Area Marketing Initiative. The initiative is designed to develop recommendations for the City of Oshkosh, the Oshkosh Area Chamber of Commerce, **Winnebago County**, and other partners regarding joint efforts to market the area to businesses.
- In cooperation with the **Calumet County** Planning Department, Commission staffed worked with the Village of Potter to conduct a community needs survey, and provided recommendations based on the survey’s findings that will help advance the village’s economic development efforts.
- Commission staff worked with the Village of Gresham (**Shawano County**) to prepare an industrial park concept plan, which included an assessment of the site, and recommendations for moving forward with the project.
- Commission staff assisted **Calumet County** in preparing an EDA grant application related to a feasibility study for an Agricultural Technology Park.
- Staff provided the City of Appleton (**Calumet, Outagamie, and Winnebago Counties**) with data sources, and Regional Comprehensive Plan Policies that supported their Google Broadband Pilot Application.
- Staff reviewed the **Shawano County** Economic Progress, Inc. (SCEPI) CDBG-Planning grant application to support downtown revitalization efforts in Shawano, and offered advice and additional resources to tap into to further strengthen the grant.
- Staff provided the City of Shawano (**Shawano County**) with an analysis of EDA funding feasibility for a potential industrial park expansion.
- ◊ Staff worked with the following local entities to communicate, assist, and coordinate as necessary, local and regional economic development and projects and activities:
 - Greater **Outagamie County** Economic Development Corporation;



- **Calumet County** Economic Development group;
- **Fond du Lac County** Economic Development Corporation;
- **Waupaca County** Economic Development Corporation Revolving Loan Fund Committee to assist in the review of loan applications;
- Tri-County (**Waushara, Green Lake, and Marquette Counties**) Economic Development Corporation;
- **Shawano County** Economic Progress, Inc. (SCEPI); and
- The Community Gardens Partnership, which focuses on community development and currently maintains gardens in **Calumet, Outagamie, and Winnebago Counties**.

State Data Center Affiliate

Regional Significance: East Central receives census materials and Demographic Service Center publications from DOA, plus additional information and reports from other state agencies. In return, East Central holds this information in its library and provides data, information, technical assistance and education to local governments, agencies, businesses and the public upon request. East Central also uses this information for planning purposes and publishes

it within East Central reports. An annual report of these activities and requests is provided to the State.

Regional Projects and Activities:

- ◇ Commission staff attends and actively participates in a number of workshops and conferences in order to keep informed on data-related issues and opportunities, as well as to collaborate on broader project initiatives. Over the past year, this included:
 - An Open House event for the U.S. Census Bureau's Oshkosh Office.
- ◇ Staff prepared an annual report to the Wisconsin Department of Administration as a requirement of State Data Center Affiliation. The report contained information as to how the Commission utilizes and distributes U.S. Census and other demographic information.

Local Assistance Projects & Activities:

- ◇ Staff responds to requests on a regular basis from public and private sector entities for information and technical assistance regarding census, housing and economic data and information. These requests included:
 - Per Capita Income and Sales Tax Revenue by Minor Civil Division within the Fox Cities, as requested by the Town of Neenah (**Winnebago County**).

- Population within the Clintonville School District, as requested by the **Waupaca County** finance department.
- Tribal and non-tribal population counts for the Town of Red Springs (**Shawano County**).
- Unemployment and Per Capita Income for **Menominee County** at the request of the College of Menominee Nation.
- Foreclosure data and resources for **Waushara County**, as requested by their Health and Human Services Department.
- Non-English speaking population data, by block group, as requested by Valley Transit (**Calumet, Outagamie and Winnebago Counties**) for use in a grant application; as well as Department of Administration Housing Unit data for use in Valley Transit's Regional Transit Authority (RTA) designation efforts.

Housing Coordination & Education

Regional Significance: Since 1998, East Central staff has served as a resource for addressing housing issues within the region by providing housing related data, identifying and discussing housing needs and potential solutions to those needs with communities. Staff also meets with supporting organizations, assists organizations with grant applications, and serves on housing related boards and committees. Staff maintains information regarding housing providers and services within the region. Staff also produces reports and fact sheets to help address or meet housing needs within the region. The intent of this program is to assist local housing authorities with strategic plans, facilitate the development of local comprehensive plans, and provide assistance and guidance to local governments, developers and other entities as they address housing issues.

Regional Projects and Activities:

- ◇ Participation in the Fox Cities Housing Coalition (FCHC) (**Calumet, Outagamie and Winnebago Counties**). The FCHC's mission is to promote the most efficient and cooperative use of resources, both fiscal and human, by non-profits, businesses and local units of government, and to enhance housing satiability and opportunities for all persons in the Fox Cities community. As part of this participation, staff:
 - Attended monthly meetings of the FCHC; and
 - Attended monthly meetings of the Affordable Housing Taskforce.

- ◇ Staff attended monthly meetings of the Winnebago Land Housing Coalition (WHC). The WHC was formed to maximize resources to identify and address affordable housing needs in the Oshkosh Urban Area (**Winnebago County**).
- ◇ Staff actively participated in the Fox Cities Workforce Housing Task Force, a task force organized under ESTHER. During 2010, the taskforce focused on the following projects:
 - Assistance with a Neighborhood Revitalization Grant project. As part of this project, three foreclosed homes were purchased; two were rehabilitated during 2010, while the third is currently under construction;
 - Assistance in developing a Foreclosure Prevention Clinic that will be held sometime during the summer of 2011; and
 - Coordinated a Workforce Housing Forum. Staff developed background materials that were distributed at the forum.
- ◇ The Commission staff attended, actively participated in a number of workshops and conferences in order to keep informed on housing issues and opportunities, as well as to collaborate on broader project initiatives. Staff attended the annual meeting of the Housing Partnership of the Fox Cities (**Calumet, Winnebago and Outagamie**).
 - Staff attended a presentation on the economic impacts of housing construction in **Winnebago County**.
 - Staff attended the UW-Extension webinar titled: Housing and Other Critical Sectors: Assessing and Building our Economy.

Local Assistance Projects/ Activities:

- ◇ Staff provided housing data to the City of Kaukauna for inclusion in the City's update to its comprehensive plan (**Outagamie County**).
- ◇ Staff attended a neighborhood meeting that unveiled the Eagle Flats site plan for the riverfront property redevelopment of the former Riverside Paper Corporation in the City of Appleton (**Outagamie County**).
- ◇ Staff provided the **Outagamie County** Housing Authority with Brownfield grant information.

Environmental Management Planning Program

Environmental Coordination, Education, and Technical Assistance

Regional Significance: East Central's communities and counties are impacted by many environmental policy decisions that are made by broader units of government. These policies, projects and programs are determined or influenced by the region's various stakeholder groups. East Central's involvement and participation in various agency and private-sector sponsored meetings, events, and initiatives is deemed a critical activity for several reasons: 1) It allows staff to keep informed on issues and projects, and relay information to various communities; 2) It gives communities in the region an objective voice on issues and projects that it may not have sufficient time and/or resources to participate in, and; 3) It helps to achieve coordination among entities for projects that are multi-jurisdictional in nature.

Regional Projects and Activities:

- ◇ The Commission finalized the administration of a \$53,000 grant it received on behalf of the Northeast Wisconsin Stormwater Consortium (NEWSWC) obtained from WDNR Stormwater Planning Program for use in developing an education campaign which will reduce phosphorus from entering the Lower Fox River Basin (*Outagamie and Winnebago Counties*).
- ◇ Staff actively participated on the State Geologic Mapping Advisory Committee to support future mapping projects for East Central's region.
- ◇ Commission staff spent significant time developing and evaluating a proposal to initiate discussions on regional level solutions to issues associated with the management of the Lake Winnebago system (*Calumet Winnebago, Waushara and Fond du Lac Counties*). This project did not successfully meet the Open Space and Environmental Management Committee's approval and was not forwarded for formal consideration by the Commission at this time.
- ◇ Staff began to plan jointly with Renewegy LLC, *Winnebago and Outagamie Counties*, UW-Extension and the Bay-Lake Regional Planning Commission on the hosting of a mini-conference regarding small wind facility siting.
- ◇ Commission staff reviewed and provided formal comments to the Wisconsin Department of Natural Resources regarding the draft State Forest Plan.
- ◇ The Commission was awarded a three-year Aquatic Invasive Species Coordination Grant for the West

Winnebago Pool Lakes (*Outagamie, Winnebago, Waushara, and Waupaca Counties*)

- ◇ Commission staff attended a number of training and development events which will assist in providing up to date knowledge and expertise on a variety of subjects pertaining to the management of environmental resources:
 - The American Water Resources Association's annual conference;
 - Lake Michigan Watershed Academy project webinars and meetings;
 - Lake Michigan Stakeholders meetings;
 - Fox-Wolf Watershed Alliance Conference;
 - Lower Fox River Partners meetings;
 - Negotiations to Amend the Great Lakes Water Quality Agreement Ship-binational Public Webinar
 - WDNR, Aquatic Invasive Species Coordinators fall planning meeting;
 - North East Wisconsin Wilderness Alliance, a newly forming collaborative initiative to address the protection of the region's natural areas;
 - New North's Sustainability Committee;
 - Board meetings of the Wisconsin Family Forests, Inc.; and
 - Glacierland Resource, Conservation & Development Council's (RC&D) Annual Meeting;

Local Assistance Projects/ Activities:

- ◇ Staff actively participated in a tour of *Calumet County's* flood prone areas hosted by Emergency Management and UW-Extension staff in order to facilitate ideas on water management needs within the County as they relate to the update of its All-Hazard Mitigation Plan.
- ◇ Staff actively participated in the *Waushara County* Cooperating Agencies meetings.

Niagara Escarpment Management

Regional Significance: Since 1998, East Central staff has been involved in building awareness and capacity for landscape level conservation planning along a unique cliff-like geologic feature that is international in scale, the Niagara Escarpment. The Niagara Escarpment traverses approximately 55 miles through both Fond du Lac and Calumet Counties within East Central's region. The Escarpment corridor contains a



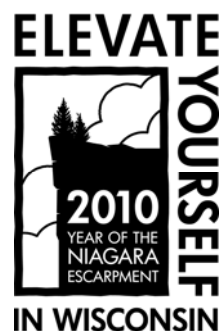
wide variety of landscapes, habitats, and species, many of which are unique only to this environment.



Concerns regarding the future use and protection of The Ledge (as it's known locally) are regional in scope, and similarly scaled planning efforts are critically needed. Housing development, wind turbine projects, non-metallic mining, recreational development, and groundwater quality are some of the major land use issues that need to be further evaluated and balanced with the conservation needs of the communities and region. Commission staff lead the following efforts with respect to this program in 2010:

- ◇ Supported and staffed six bi-monthly meetings of the Niagara Escarpment Resource Network (NERN), an informal partnership of local, county, and state agencies, conservation organizations and citizens. Six meetings were held to discuss ongoing projects, issues, and activities, as well as to educate and inform attendees of the various aspects and unique sites of the escarpment. Staff currently serves as the Founding Co-Chair of the Network which conducts activities and projects that affect **Calumet and Fond du Lac Counties**.
- ◇ Staff continued the development and maintenance of a website (www.escarpmentnetwork.org) and an e-mail list associated with the Niagara Escarpment Resource Network (**Calumet and Fond du Lac Counties**).
- ◇ The Commission supported the coordination of efforts to celebrate 2010 as "Year of the Niagara Escarpment" as designated by the Wisconsin State Legislature (AJR-1). Working with dozens of partners to develop a year-long program consisting of over 55 separate projects, events, tours, speaking engagements, and other activities surrounding the celebration of the Year of the Niagara Escarpment. These events impacted over 19,000 individuals directly in terms of attendance/audience size estimates. A few examples of these projects and events are listed below:

- Staff prepared materials for and hosted two *Niagara Escarpment Greenway Plan* workshops in the Village of Sherwood (**Calumet County**) and the Town of Ledgeview (Brown County). This project serves as the first step to having a formal plan which blends conservation, green infrastructure, recreation and heritage tourism into a framework for local decision-making and economic development along the corridor. The project is supported by and is being provided assistance from the National Park Service's Rivers & Trails Program.
- Staff prepared maps and graphic layouts for the Great Arc Bike Route project – a dedicated bike route map brochure for a new trail which extends from Mayville (Dodge County) to, and including Washington Island in Door County. The trail passes through *Fond du Lac* and **Calumet Counties** as it traverses the escarpment landscape.
- Staff continued to assist in the final review process of the proposed 'Wisconsin Ledge' American Viticultural Area (AVA) which includes **Calumet County** and portions of *Fond du Lac County*.
- Staff coordinated the January 14, 2010 *Niagara Escarpment: What is it, and Why Should I Care?* symposium at UW-Green Bay which was attended by over 200 interested people.
- Staff attended the Meuer Farm (**Calumet County**) media day event. The Meuer Farm incorporated the Year of the Niagara Escarpment logo into their corn maze this year to support NERN's and the Commission's efforts.
- Public and inter-agency presentations were made for groups such as the: Fond du Lac Friends of the Ledge Coalition; 30th Annual Milwaukee Audubon Natural Landscapes Conference; the River Alliance as part of a karst tour in **Calumet County**; the Kiel Public Library Speaker Series; the **Calumet County**/Ledgeview Fall Food and Energy Fest; the Neville Public Museum Geology Club, and; the Sheboygan County Historical Society.



NR-135 Non-Metallic Mining Reclamation Program Administration

Regional Significance: This multi-county administration program is the direct result of a state-mandated rule (Chapter NR-135 Wis. Adm. Code) passed in December 2000. The overall goal of NR 135 is to provide a framework for statewide regulation of non-metallic mining reclamation. This was done by establishing uniform reclamation standards and requiring counties to adopt a reclamation plan ordinance capable of ensuring compliance with these standards.

East Central, through a cooperative agreement signed in July 2001, administers these ordinances for five counties (*Calumet, Outagamie, Shawano, Waupaca and Winnebago*). As of December 31, 2010, a total of 221 sites had active permits. The program is self-funded through fees on active mining operations. This program is an excellent example of regional cooperation and staff's knowledge in reclamation planning, policy, and regulation has resulted in a consistent, efficient, cost-effective and service oriented program.

Regional Projects and Activities:

- ◇ Processed six "new" mine site reclamation permit applications (*Calumet, Outagamie, Shawano, and Waupaca Counties*).
- ◇ Conducted permit compliance inspections on 75% of all permitted mine sites.
- ◇ Certified the reclamation of 53 acres of land, of which, three of these sites received a certificate of completion for final reclamation activities.
- ◇ Prepared and conducted the annual operator and WDNR reporting process and updated the county planning and zoning committees on the program status.
- ◇ Continued the development and maintenance of the reclamation permit database and associated GIS mapping of mine sites.



Exhibit 16 - NR-135 Permit Summary, 2010

County	Total Sites Permitted	Total Acres Active	Total Acres Reclaimed in 2010	Total Acres Reclaimed Since 2001
Calumet	23	433	8	11
Outagamie	53	1276	4	70
Shawano	55	679	27	65
Waupaca	49	545	4	100
Winnebago	41	779	10	23
Totals	221	3,712	53	269

Source: ECWRPC, 2010

Groundwater Management Issues

Regional Significance: East Central has been involved in planning activities for groundwater quality and quantity issues in the Fox Cities area since 1996, when it assisted in coordinating several aquifer research reports prepared by the U.S. Geological Survey. These studies concluded that the level of the St. Peter Sandstone aquifer (the major aquifer used for high capacity wells) is declining at a rate of over two feet per year due to the effects of regional growth, development patterns, and water consumption. This draw-down has caused concerns with respect to the contamination of wells from naturally occurring arsenic. In 2010 the Commission continued to address the Fox Cities' long-term needs for potable water supplies:

- ◇ The Commission secured funding for and worked with Wisconsin Geologic and Natural History Survey (WGNHS) personnel to develop county-level aquifer recharge maps based on the Survey's new 'soil-water balance' GIS model. Phase I of this project, affecting *Calumet, Outagamie and Winnebago Counties*, was initiated in 2010 and will be completed in 2011. Phase II (*Waushara, Waupaca, Shawano and Menominee Counties*) will be initiated in late 2011 with completion in 2012.
- ◇ Staff monitored, reviewed, and commented on a draft of the Groundwater Coordinating Council's *2010 Report to the Legislature* to bring emphasis to the needs of karst environments and the karst management concerns of northeastern Wisconsin (*i.e., Calumet County*).

Exhibit 17 East Central Region NR-135 Program Non-Metallic Mine Reclamation Sites

Map Features

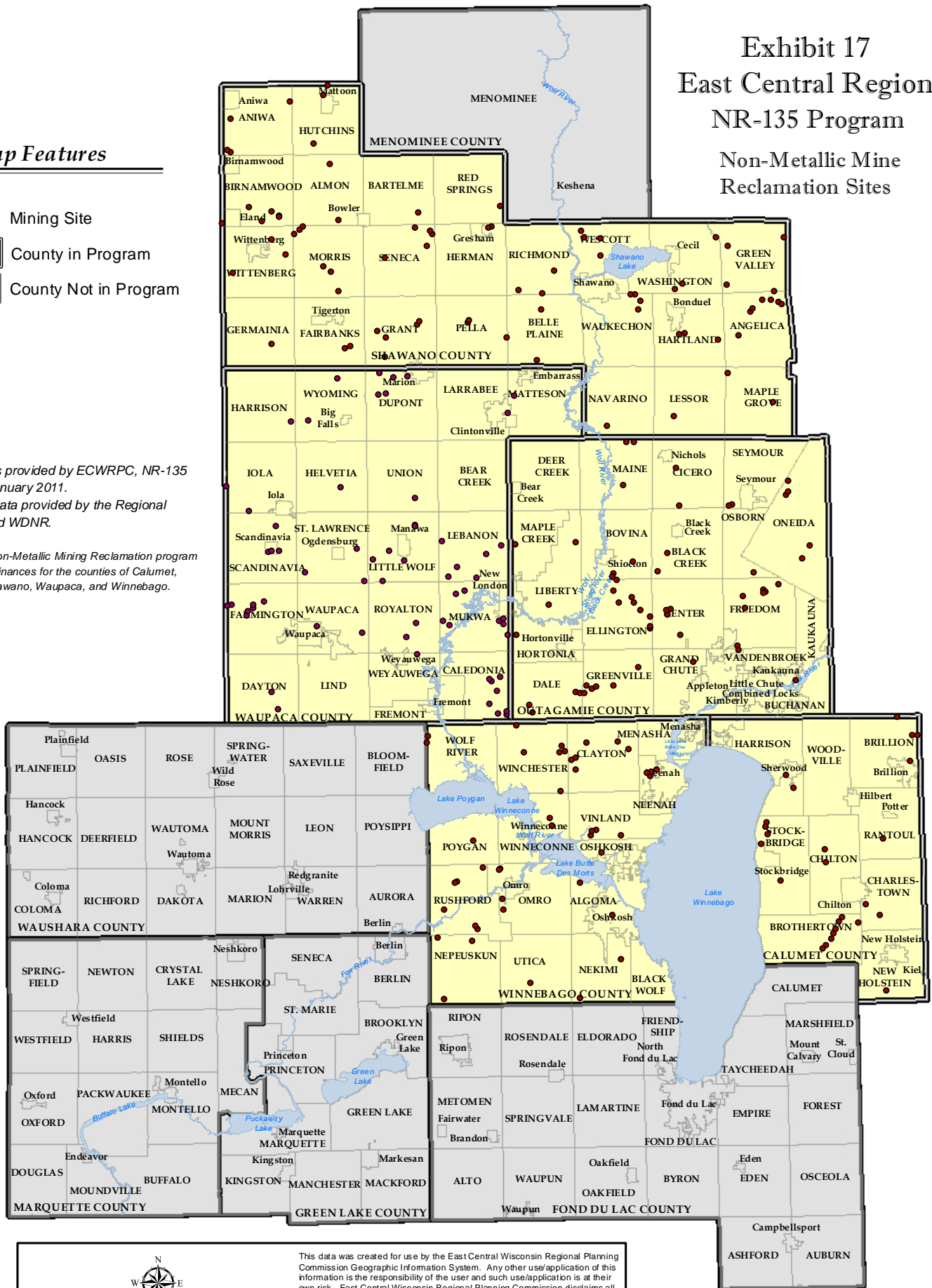
- Mining Site
- County in Program
- County Not in Program

Sources:

Mining Sites provided by ECWRPC, NR-135 program, January 2011.

Base map data provided by the Regional counties and WDNR.

The NR-135 Non-Metallic Mining Reclamation program administers ordinances for the counties of Calumet, Outagamie, Shawano, Waupaca, and Winnebago.



This data was created for use by the East Central Wisconsin Regional Planning Commission Geographic Information System. Any other use/application of this information is the responsibility of the user and such use/application is at their own risk. East Central Wisconsin Regional Planning Commission disclaims all liability regarding fitness of the information for any use other than for East Central Wisconsin Regional Planning Commission business.

Features on map are approximate locations and are to be used for reference purposes only.

Prepared April, 2011 By:

East Central Wisconsin Regional
Planning Commission
400 Ahnaip Street, Suite 100
Menasha, Wisconsin 54952



Local Assistance Planning Program

Regional & Local Plan Coordination

Regional Significance: The Commission provides a number of services and activities related to current planning issues within the region. This is done mainly to assist local units of government in developing local plans and planning policies, improve decision-making capabilities, and foster more effective capabilities to address community growth and development concerns. This in turn, facilitates the Commission's main mechanism to implement the Regional Plan - by providing assistance and advice in how communities can use the plan's goals, objectives, policies, and recommendations. These activities further improve the visibility of the Commission within the region.

Local Assistance Program

Requests for local assistance to member entities fall into two general categories, Technical Assistance and Contract Services. Requests that qualify under the Technical Assistance work element are those that are estimated to require three to five person-days of staff resources to complete. Member governments are not charged for these types of requests and projects are submitted to the Commission for consideration, and are subsequently ranked and selected based on budget and staffing availability. When planning-related services require a greater commitment of staff resources and time than can be provided under the Technical Assistance work element, East Central will typically enter into a contract with the governmental entity. This must be approved by the Commission at one of its quarterly meetings.

Technical Assistance - East Central staff responds to numerous requests for day-to-day planning advice and assistance that qualify for assistance under its Technical Assistance work element.

These projects cover a wide range of planning-related activities, including requests for data and other materials related to demographics, economic development, traffic, land use and other aspects of planning; advice on specific planning and zoning issues; special surveys and studies; and planning assistance for parks and other recreational facilities, residential developments, downtown areas, industrial parks, and certain transportation improvements. Only those local assistance projects which do not fit any of the other planning program categories are listed here. Please refer to the other sections of this document to see descriptions of other projects:

- ◇ Staff met with the Village of Redgranite (*Waushara County*) to discuss the development of a zoning map. This project is expected to be completed in the spring of 2011.
- ◇ Staff assisted the Menominee Town/County Plan Commission with securing a speaker to discuss the legalities of comprehensive planning in Wisconsin (*Menominee County*).
- ◇ Staff also provided guidance to the Menominee Town/County Plan Commission on implementing their comprehensive plan (*Menominee County*).
- ◇ Staff attended a meeting of the *Winnebago County* Public Private Partnership (WCPPP) to engage in various emergency management discussions which affect, or are affected, by the Commission's planning activities.
- ◇ Letters of support were requested by, and provided to the following entities for the projects noted:
 - The Town of Grand Chute's (*Outagamie County*) application for a WAPA Planning Award for their Comprehensive Plan.
 - The City of Waupaca's (*Waupaca County*) application to the WDNR for a Lake Management Planning Grant.
 - The Town of Maple Grove's (*Shawano County*) successful application for an Agricultural Enterprise Area (AEA) designation through DATCP's Working Lands Initiative program.
 - The City of Shawano's (*Shawano County*) application to the HUD/EPA Community Challenge Grant Program for funding to re-write its zoning ordinance which will implement the CTH B Corridor Study Plan recommendations – a plan prepared by the Commission under contract in 2008.
- ◇ Staff met and worked with Town of Greenville (*Outagamie County*) staff to review and discuss future comprehensive plan implementation activities and possible ordinance changes.
- ◇ Staff attended a Town of Greenville (*Outagamie County*) Board meeting to discuss ongoing sub-regional concept plans for the Neighborhood "A" area as identified in its Comprehensive Plan.
- ◇ Staff continued to attend meetings of the *Winnebago County* Zoning Update Committee to provide input on the draft zoning ordinance document.

- ◇ Staff began to research and provide materials to **Shawano County** on the proposed development of design guidelines for the WIS 29 highway corridor and gateway through the Shawano area.
- ◇ The Commission provided planning position descriptions to the **Waupaca County** Zoning Office.
- ◇ Staff met with **Waupaca County** UW-Extension staff to discuss comprehensive plan implementation issues and current discussions regarding the reorganization of the county planning/zoning functions, as well as other county needs related to these functions.

Contract Services - Contracts with counties and member communities for more extensive planning services are an important component of East Central's overall planning activities. East Central has made a strong commitment to contract with local entities for comprehensive planning and other services. Contract service projects are listed in some of the other sections of this document and those that do not fit with any of the previous program areas are contained below:

- ◇ Staff administered a Community Development Block Grant – Emergency Assistance Project (CDGB-EAP) grant for the City of Oshkosh (**Winnebago County**) for the development of a regional stormwater detention basin that will protect a low-to-moderate income neighborhood that was seriously flooded in 2008 and previous years.
- ◇ Staff administered an Economic Development Administration (EDA) grant for an industrial park expansion in the City of Omro (**Winnebago County**).



- ◇ Commission staff provided professional planning services to the City of Waupaca (**Waupaca County**).
- ◇ Commission staff finalized its work with **Waushara County** on the development and adoption of their All-Hazard Mitigation Plan as required by the Federal Emergency Management Agency (FEMA).
- ◇ The Commission continued to work with **Shawano County** under contract to develop an All-Hazard Mitigation Plan consistent with FEMA requirements.
- ◇ The Commission prepared, printed and distributed the final comprehensive plan documents for:
 - The Village of Combined Locks (**Outagamie County**);
 - Town of Richford (**Waushara County**);
 - Town of Saxeville (**Waushara County**);
 - Menominee Town/County (**Menominee County**);
 - Village of Coloma (**Waushara County**);
 - Village of Lohrville (**Waushara County**);
 - Town of Coloma (**Waushara County**)

Geographic Information System Program

Regional Significance: Beginning in 1990, East Central began completing all mapping projects in digital format using Geographic Information System (GIS) software. The benefits of this technology allow East Central to analyze and compile many forms of spatial data to aid in mapping activities and planning decisions.

To facilitate the Commission's mapping efforts; a Regional Land Information System (RLIS) was developed and administered. The RLIS consists of a set of standards that applies to each data element such as map projection coordinates, data accuracy, source documentation, digital data filing and storage system, along with others. A major benefit of the RLIS is that data is collected and standardized across all units of government. An example of this is the Commission's Year 2000 Existing Land Use inventory project. The land use data was collected by the Commission in a focused and cost-effective manner and has since been utilized by many local and county entities for their planning activities. This project, conducted at this scale, directly reduced costs, duplication of efforts, and increased efficiencies with shared and uniform datasets.

The Commission also provides for the coordination of data acquisition, distribution, and accuracy due to its ability to work across multiple units of government. With the introduction of improved GIS software, East Central began conversion of existing data into a new format in 2006 called the Geodatabase. This data conversion has continued through 2010. The new data format lets the GIS team utilize the existing GIS software to its full capacity. In addition to the numerous digital mapping projects noted earlier in this report, the following GIS/mapping-only activities were also worked on in 2010:

Regional Projects & Activities:

- ◇ Staff attended the 2010 Wisconsin Land Information Association (WLIA) Annual conference at the Radisson Paper Valley Hotel and Convention Center, in Appleton, Wisconsin to obtain current information on GIS technology, applications, and available resources. Staff also helped in teaching an ArcMap Tips and Tricks workshop.
- ◇ Staff also attended the 2010 Fall Wisconsin Land Information Association (WLIA) Regional meeting at the Holiday Inn in Stevens Point to gain knowledge on the Census 2010 and redistricting GIS issues.
- ◇ Staff developed GIS mapping displays for the Wisconsin Land Information Association's poster/map contest in conjunction with their annual conference, and received awards in different mapping categories for their efforts.
- ◇ Staff attended regional and county GIS user group meetings to coordinate and support local and regional mapping activities, including:
 - The **Winnebago County** GIS User Group (WINGS) Committee;
 - The Fox Cities GIS Users Group;
 - The GIS Day event for the Fox Valley;
 - The ESRI Wisconsin User Group (EWUG); and
 - Various ESRI training seminars and webinars.
- ◇ Staff served on the Wisconsin Geographic Information Coordination Council (WIGICC) as the Secretary to the Executive Committee and as the Regional Planning Commission Representative.
- ◇ GIS staff maintained a database tracking system for all digital data acquisition and distribution activities. They continued to update the standards for the conversion of data to the Geodatabase File format, wrote data models, and archived received data. The archived GIS data will be utilized internally by planning and technical staff for mapping in ECWRPC's programs.
- ◇ GIS staff partnered with the Glacierland RC&D to create mapping graphics for use in their 2010 Eastern Wisconsin Farm Fresh Atlas. This RC&D includes the member counties of **Calumet, Fond du Lac, Menominee, Outagamie, Shawano, Waupaca, Waushara, and Winnebago.**
- ◇ Staff submitted and finalized the grant paperwork to facilitate a 4-county participation effort in the National Geospatial-Intelligence Agency (NGA) through the U.S. Geological Survey (USGS). The \$57,570 grant covered the Urban Areas of the ortho-imagery which included the counties of **Calumet, Fond du Lac, Outagamie, and Winnebago.** As a benefit of being a member, grant submittal and administrative labor was provided and funds were submitted to the participating county based on percent of coverage area.
- ◇ As part of the Aquatic Invasive Species Coordination effort, staff produced mapping and a database for boat launches in the Lake Winnebago and Pool Lakes areas.
- ◇ Staff updated transit maps for the MPO's in the region. (Fox Cities, Fond du Lac and Oshkosh)

- ◇ Staff met with constituents of Oshkosh Transit to discuss the publishing of the routes on the Google Transit website. (*Winnebago County*)
- ◇ Staff participated in the taskforce for help in developing a Damage Assessment tool for emergency management that would aid counties enter information in a form that could be easily submitted to FEMA after a disaster.
- ◇ As part of an EDA TAA Grant application, staff created a map for the flood coverage and benefit areas. (*Calumet, Fond du Lac, Outagamie, Waupaca, Winnebago Counties*).
- ◇ Staff reviewed data for the PSAP program in accordance with the U.S. Census Bureau. Staff assisted in mapping activities for all *Region Counties* in the 2010 Census update.
- ◇ In conjunction with the NR-135 program, GIS staff provided database training to create mapping layouts for mining sites for the five counties in the program (*Calumet, Winnebago, Outagamie, Shawano, and Waupaca Counties*).
- ◇ Staff developed mapping layouts for the Fox-Wisconsin Heritage Parkway Action Plan to aid in the national parkway designation process and assisted in the development of portage trail signage.
- ◇ As part of the Commission's requirements for EDA, staff completed mapping and research for an update of the *Comprehensive Economic Development Strategy (CEDS)* report.
- ◇ As part of the technical services goals, staff completed mapping for an update to the Fox Cities Street Index map for 2010.
- ◇ At the request of the Fox River Navigational Systems Authority (FRNSA), staff provided a brochure for the Fox Locks sites (*Outagamie and Winnebago Counties*).
- ◇ Staff developed mapping layouts for the Fox Cities, Oshkosh and Fond du Lac, MPOs Long Range Transportation Plan Updates. (*Calumet, Winnebago, Outagamie, Fond du Lac Counties*).
- ◇ As a technical assistance request, staff ortho-rectified historic 1970 photos for *Outagamie County*.
- ◇ As a technical assistance request staff processed 1953 photo scans for *Calumet County*.
- ◇ GIS staff organized and distributed the data from the Town of Greenville, (*Outagamie County*) as part of their Comprehensive Planning contract requirements.
- ◇ Staff conducted a land use inventory update for the 2030 Fond du Lac Sewer Service Area Plan update. (*Fond du Lac County*).
- ◇ At the request of *Calumet County*, sewer service and planning area boundary area GIS data was provided.
- ◇ GIS staff developed a poster plan map for the Villages of Coloma and Lohrville, (*Waushara County*) as part of their Comprehensive Planning contract requirements.
- ◇ GIS staff actively participated as a voting member on the *Calumet County* and the *Winnebago County* Land Information Councils and as an ad hoc member on the *Shawano County, Waupaca County, and Waushara County* Land Information Councils to provide technical advice and guidance.
- ◇ Staff updated GIS shapefiles to be used by the Oshkosh Transit System, (*Winnebago County*) to develop their updated Riders Guide and Google Transit routes.
- ◇ As part of a technical assistance request by the Town of Stockbridge (*Calumet County*), staff developed an official basemap.
- ◇ As part of a bid contract, staff developed and completed mapping layouts for the *Waupaca County* Emergency Firezone Atlas.
- ◇ As part of a technical assistance request, staff worked on mapping for the Village of Gresham's industrial park project (*Shawano County*).
- ◇ At the request of the Sheriff's departments of *Calumet and Winnebago Counties*, staff worked on conversions of aerial imagery to latitude and longitude coordinates.
- ◇ Staff produced mapping for the UW-Madison Center for Freight, Infrastructure, Research and Education (CFIRE) freight project.

Local Assistance Projects & Activities

The GIS department's staff provided invaluable project-based and technical support to entities on the following efforts:

Mapping and Technical Assistance:

- ◇ At the request of *Menominee County*, GIS staff assisted with a data export to the WDNR of gypsy moth spray areas in the county.

Graphics and Design Assistance:

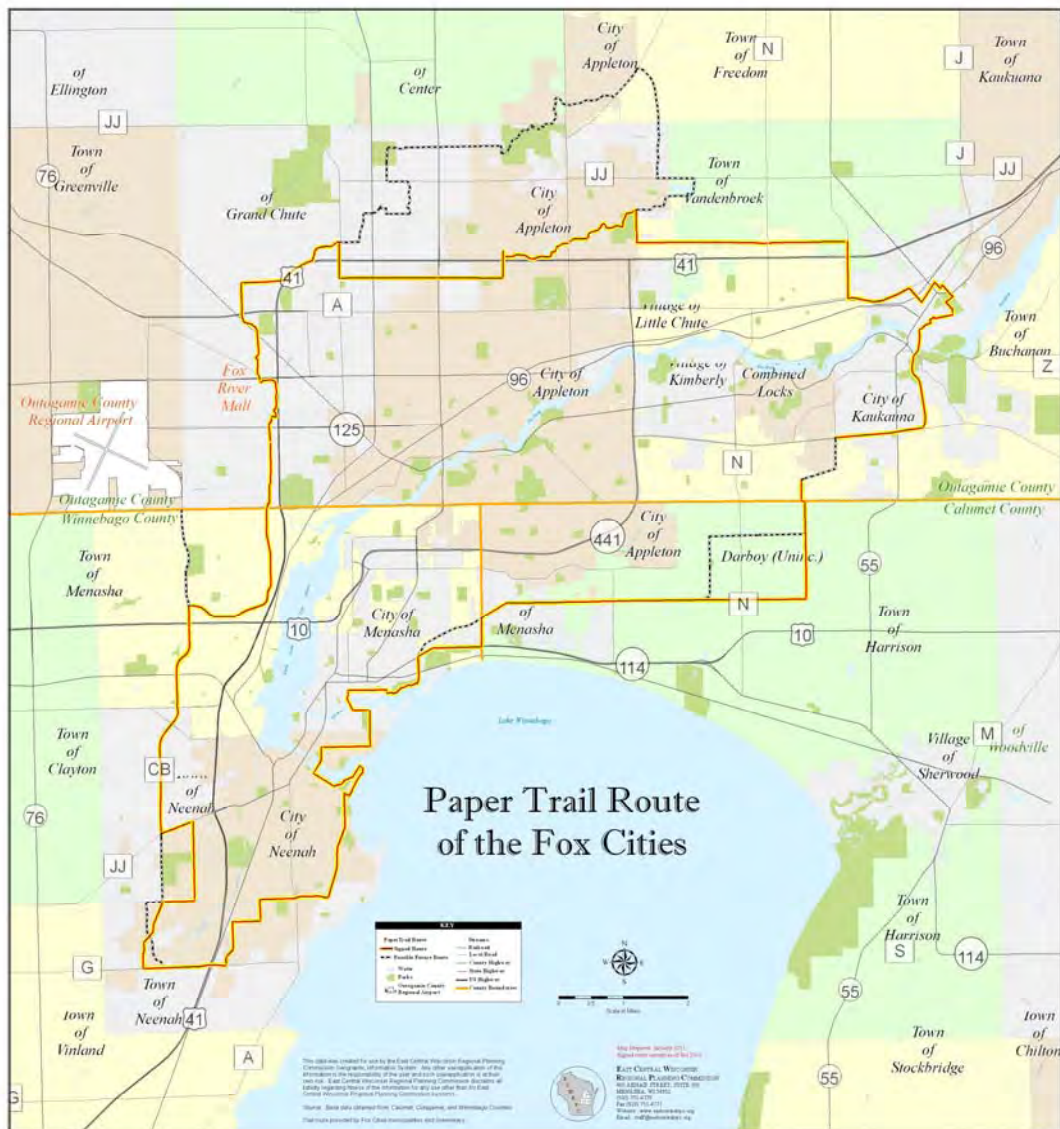
- ◇ As part of the Niagara Escarpment mapping initiative, staff attended seminars, and worked on a mapping atlas of the escarpment. The projects will improve knowledge and appreciation of this unique geologic resource (*Calumet County*).

the Niagara Cuesta Tourism project, including bike routes of the area producing a Great Arc Bike Map brochure (*Calumet County, Fond du Lac County*).

- ◇ At the request of Friends of the Fox, staff produced a caution card to be handed out to boaters along the locks and printed scans of USGS topography for the Fox River (*Outagamie and Winnebago Counties*).
- ◇ At the request of Fox Cities Greenways, staff worked on mapping of the Fox Cities Paper Trail and provided assistance to the Fox Cities Regional Trails brochure (*Calumet, Outagamie and Winnebago Counties*).

- ◇ Staff produced a marketing brochure for the mini-conference sponsored by CLUE (Center for Land Use Education) on the implementation of Smart Growth Planning.

- ◇ As part of a technical assistance project, staff created a concept map for the City of Waupaca's South Park. (*Waupaca County*).



Information Technology Program

Information System Management

Regional Significance: Although many of the Commission's information technology (IT) functions are unseen by many, they are an important part of the support provided for the Commission's daily administrative, GIS, and planning functions. Day to day tasks associated with personal computer, and network server, required maintenance and upgrades. Software and license purchases and support, as well as data storage and backup needs were also addressed to support the Commission's efforts.

Regional Projects & Activities:

- ◇ Staff continually works on updating the Commission's website www.eastcentralrpc.org.
- ◇ Staff developed and maintained a website for the Regional Safe Routes to School program: www.eastcentralsrts.org.
- ◇ Staff developed and maintained a website for the Fox-Wisconsin Heritage Parkway program: www.eastcentralrpc.org/HeritageParkway

Local Assistance Projects & Activities:

- ◇ Staff installed and configured a new server in order to maintain data storage and communications.
- ◇ Staff developed a website for *Menominee County*: www.co.menominee.wi.us.
- ◇ Staff maintained a website as part of the Safe Routes to School contract for the Kimberly Area School District (*Outagamie County*): www.eastcentralrpc.org/KimberlySRTS.
- ◇ Staff maintained a website as part of the Safe Routes to School contract for the Little Chute Area School District (*Outagamie County*): www.eastcentralrpc.org/LittleChuteSRTS.
- ◇ Staff maintained a website as part of the Safe Routes to School contract for the School District of Omro (*Winnebago County*): www.eastcentralrpc.org/OmroSRTS.
- ◇ Staff maintained a website as part of the Safe Routes to School contract for the Oshkosh Area School District (*Winnebago County*): www.eastcentralrpc.org/OshkoshSRTS.
- ◇ Staff maintained a website as part of the Safe Routes to School contract for the Winneconne Community School District (*Winnebago County*): www.eastcentralrpc.org/WinneconneSRTS.

- ◇ Staff maintained a website as part of its smart growth comprehensive plan contract for:

- Village of Lohrville (*Waushara County*): www.eastcentralrpc.org/PlanLohrville.
- Village of Coloma (*Waushara County*): www.eastcentralrpc.org/PlanVillageColoma.
- Town of Coloma (*Waushara County*): www.eastcentralrpc.org/PlanTownColoma.
- Town / County of Menominee (*Menominee County*): www.eastcentralrpc.org/PlanMenominee.
- Town of Greenville (*Outagamie County*): www.eastcentralrpc.org/PlanGreenville.

Regional Aerial Photography and Imaging

Regional Significance: The Commission has provided various services to member units of government for technical projects which cross multiple jurisdictions. These projects often involve additional coordination activities with state or federal agencies as well as staff attendance at various workshops and conferences so that information can be shared with local governmental units. These projects often reap benefits to the units of government in terms of cost savings, efficiencies, and data consistency.

Regional Projects & Activities:

- ◇ Staff fostered partnerships with neighboring Regional Planning Commissions and state agencies to join the 2010 Wisconsin Regional Orthoimagery Consortium (WROC). This effort was designed to mirror our successes in 2005. Currently 7 total RPC's are participating in the program with more counties and municipalities, as well as state-wide agencies, with flights completed in 2010. This program will provide an avenue for counties and municipalities to acquire digital aerial photography for use in their Geographic Information Systems and help with the creation of a state-wide ortho product.
- ◇ At the request of *Waushara County*, staff reviewed the county's 2010 orthophotography for errors and tonal issues.
- ◇ Staff completed various aerial photo printing orders for the public at the request of customers.

Commission Administration

The Commission performs a multitude of routine and periodic administrative functions in its daily operations. Two management positions and three administrative staff serve the Commission's 16 other staff, as well as the needs of the 28 Commissioners and the general public. In general, these functions can be categorized as follows, and all require significant investments in time:

- ◇ Financial management and recordkeeping, including the preparation for an annual audit per federal and state requirements as a grant recipient.
- ◇ The provision and administration of human resources functions for the Commission's 21 staff.
- ◇ Ensuring compliance with Title VI Non-Discrimination requirements as a recipient of federal funding, including the preparation of the annual Affirmative Action Plan document.
- ◇ Customer service and agency/entity referrals for members of the public as well as the communities which comprise the region.
- ◇ Responses to information about the general nature of the Commission, including membership concerns and interests, basic programs and services.
- ◇ Attendance at key periodic events to better communicate with stakeholders, such as the:
 - the annual Wisconsin Counties Association (WCA) conference;
 - Wisconsin Chapter of APA (WAPA) Statewide Conference; and
 - National American Planning Association (APA) Conference;

Association of Wisconsin RPCs

The Association of Wisconsin Regional Planning Commissions (AWRPC) was created to address items of mutual concern among the regional planning commissions.

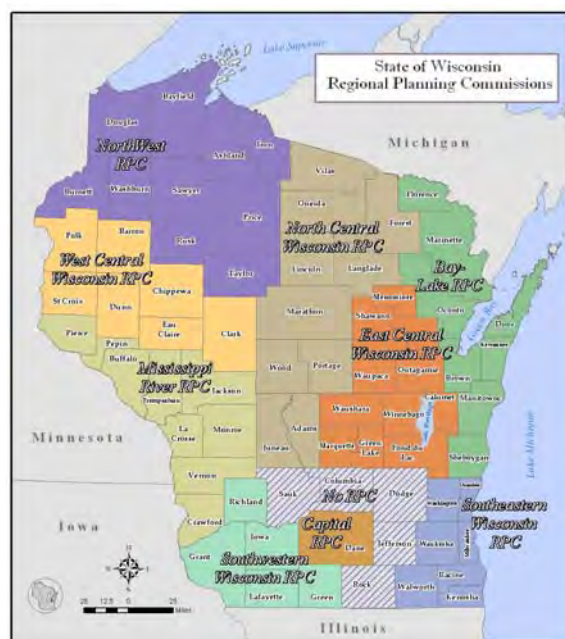
The group is formed under a formal set of by-laws with a rotating Chair. The group works closely with the Wisconsin Counties Association and other statewide associations and agencies to advocate for regional planning and to monitor and take positions on proposed state legislation and planning related programs in an effort to better assist its member counties and communities.

- ◇ East Central serves as the Secretary/Treasurer of the Association of Wisconsin Regional Planning Commissions (AWRPC) and as such, manages all financial aspects for the organization. Management staff also attended three of the four meetings held during 2010.

- ◇ The Commission's Controller developed and coordinated two workshops sponsored by the AWRPC to discuss best practices and policies for financial reporting and bookkeeping procedures amongst the various RPCs.
- ◇ East Central and two other RPCs were requested to participate in Rep. Tom Petri's annual 'Grants Workshop' to share information about the Commission and its services related to planning, infrastructure and grant/funding sources.
- ◇ Staff coordinated and participated in the "2010 Regional Planning Commission Day at the Capital" event to raise awareness of RPCs.

Other Activities

- ◇ Staff actively participated in the 2010 Fox Cities Leadership's Local Government Day program by presenting information about the complexities of governance in the Fox Cities.
- ◇ Staff also met and worked with the City of Menasha Sustainability Committee and other stakeholders to design and begin construction on a 'rain garden' in front of the office. This 'rain garden' provides for additional, natural stormwater management on the site and serves as an educational model within the neighborhood.
- ◇ Staff conducted a presentation regarding the Commission and its functions for a UW-Oshkosh student class.



For more info on RPC's see www.awrpc.org

APPENDIX A – ECWRPC TECHNICAL ADVISORY COMMITTEES

TRANSPORTATION TECHNICAL ADVISORY COMMITTEE POOL

Sandra Beaupre, Director, WisDOT, Bureau of Planning, Madison
Jerry Bougie, Planner, Winnebago County
Darryn Burich, Community Development Dept., Oshkosh
Grant Bystol, Highway Commissioner, Shawano County
Tom Dahlke, Highway Commissioner, Waushara County
Allen Davis, Director of Community Development, Town of Grand Chute
George Dearborn, Director of Community Development, Town of Menasha
Kathy Drews, WisDOT – Northeast Region
Travis Parrish, Administrator, T. Harrison
Al Geurts, Highway Commissioner, Outagamie County
Lynn Gilles, Fond du Lac Transit
Angela Gorall, Administrator/Clerk, Town of Buchanan
Chris Haese, Director of Community Development, City of Neenah
John Haese, Highway Commissioner, Winnebago County
Matt Halada, WisDOT, Northeast Region
Michael Hardy, City of Appleton
Karen Harkness, Planning Director, City of Appleton
Mike Hendrick, Planning Director, Outagamie County
Julie Heuvelman, Planning Director, Calumet County
Sean Hutchison, Clerk Administrator, Village of Combined Locks
Robert Jakel, Director of Community Development, Kaukauna
David Johnson, Assistant Planning Director, Outagamie County
Gerry Kaiser, Public Works, Neenah
Greg Keil, Director of Community Development, City of Menasha
Chuck Kell, Administrator, Village of Little Chute
Bob Kesler, Town of Harrison
Mark Lahay, City of Appleton
Marty Lenss, Manager, Outagamie County Airport
Mark O. Lentz, Director of Public Works, City of Fond du Lac
James March, Administrator, Town of Grand Chute
Thomas Marquardt, P.E., Dept. of Public Works, Town of Grand Chute
Jill Michaelson, WisDOT – Northeast Region
Peter Moll, Manager, Wittman Field, Oshkosh
Mark Mommaerts, Town Planner, Town of Harrison
John Nordbo, Urban Planning, WisDOT, Madison
Claudia Orvis, WisDOT – Urban Planning
Mike Ottery, Highway Commissioner, Calumet County
David Patek, Director of Public Works, Oshkosh
Dave Joliceur, Federal Highway Administration (FHWA)
Mark Radtke, Director of Public Works, Menasha
Donna Reed, Director of Planning, Federal Highway Administration (FHWA)
Mark Rohloff, City Manager, Oshkosh
Wayne Rollin, Director of Community Development, City of Fond du Lac
Marisol Simon, Federal Highway Administration (FHWA)
Mike Simon, McMahon & Associates
Rick Stautz, Director of Public Works, City of Shawano
Dean Steingraber, Highway Commissioner, Waupaca County
Chris Strong, Manager, Oshkosh Transit System
John Sundelius, Director of Public Works, City of Kaukauna
Paula Van De Hey, Director of Public Works, City of Appleton
Roy Van Gheem, Public Works Director, Little Chute
Dave Vander Velden, Public Works, Village of Kimberly
David Vickman, City of Oshkosh
Ben M. Warrington, Highway Commissioner, Menominee County
Deborah Wetter, Manager, Valley Transit
Larry Wetering, Director of Public Works, City of Neenah

TRANSPORTATION POLICY ADVISORY COMMITTEE POOL

Fox Cities Urbanized Area
Bill Barribeau, Chairman, Calumet County
Mike Berg, Region Director, WisDOT Northeast Region
Rod Clark, Director, Bureau of Transit, WisDOT
Charles Fischer, President, Village of Little Chute
Timothy Hanna, Mayor, City of Appleton
Mark Harris, Winnebago County Executive
Chuck Kuen, President, Village of Kimberly
Randy Leiker, Chairman, Town of Greenville
Michael Marsden, Chairman, Town of Grand Chute
Bruce Matzke, Division Admin., Federal Highway Administration (FHWA)
Mark McAndrews, Chairman, Town of Buchanan
Dwight McComb, Federal Highway Administration (FHWA)
Don Merkes, Mayor, City of Menasha
Jill Michaelson, WisDOT – Northeast Region
John Neumeier, President, Village of Combined Locks
Robert “Toby” Paltzer, Outagamie County Executive
Dave Joliceur, Federal Highway Administration (FHWA)
Eugene Rosin, Mayor, City of Kaukauna
Chuck Rundquist, Chairman, Fox Cities Transit Commission
George Scherck, Mayor, City of Neenah
Bob Schmeichel, Chairman, Town of Neenah
Jim Steineke, Chairman, Town of Vandenbrook
Jeffrey Sturgell, Administrator, Town of Menasha
Arden Tews, Chairman, Town of Menasha
Oshkosh Urbanized Area
Glen Barthels, Chairman, Town of Nekimi
Sandra Beaupre, Director, WisDOT, Bureau of Planning, Madison

Tim Blake, Chairman, Town of Algoma
Jim Erdman, Supervisor, Town of Oshkosh
Paul Esslinger, Mayor, City of Oshkosh
Frank Frassetto, Chairman, Town of Black Wolf
Gerald Frey, Chairman, Town of Oshkosh
Matt Halada, WisDOT, Northeast Region
Mark Harris, Winnebago County Executive
Dwight McComb, Federal Highway Administration (FHWA)
John Nordbo, Urban Planning, WisDOT, Madison
Donna Reed, Director of Planning, Federal Highway Administration (FHWA)
Mark Rohloff, City Manager, Oshkosh

Fond du Lac Urbanized Area (Commission serves as staff only)

Policy Board (Voting Members):

Allen Buechel, Fond du Lac County (Chair)
Wayne Rollin, City of Fond du Lac (Vice Chair)
Matt Halada, WisDOT, Northeast Region
Tom Herre, City Manager, City of Fond du Lac
Chuck Homung, Administrator, Village of North Fond du Lac
Tom Lakin, City of Fond du Lac
Mark O. Lentz, City of Fond du Lac
Tom Janke, Alternate, Fond du Lac County
Jim Nintzel, City of Fond du Lac
James Pierquet, Town of Empire (rep. all towns)

(Non-Voting members)

Colleen Harris, Alternate, WisDOT, Northeast Region
Curt Holman, Canadian National Railroad
Dwight McComb, FHWA
John Nordbo, WisDOT, Central Office
Dave Joliceur, Federal Highway Administration (FHWA)
Walt Raith, ECWRPC

Technical Advisory Committee

Kathy Drews, WisDOT, Northeast Region
Lynn Gilles, City of Fond du Lac, FDLAT
Jerry Guelig, Town of Taycheedah
Matt Halada, WisDOT, Northeast Region
Curt Holman, Canadian National Railroad
Chuck Homung, Administrator, Village of North Fond du Lac
Tom Janke, Fond du Lac County Highway
Norbert C. Kolllel, Town of Empire
Mark O. Lentz, City of Fond du Lac, Dept. Public Works
Harold Manske, Town of Fond du Lac
Dwight McComb, FHWA
Charles McCourt, Town of Friendship
John Nordbo, WisDOT, Central Office
Lee F. Perrizo, Fond du Lac County Airport
James Pierquet, Town of Empire
Wayne Rollin, City of Fond du Lac
Sam Tobias, Fond du Lac County
Walt Raith, ECWRPC

ECONOMIC DEVELOPMENT STRATEGY COMMITTEE*

Lew Boyd, Menominee Indian Tribe of Wisconsin
Jennifer Brown, Kewaunee County Economic Development Corporation
Don Clewley, Marinette County Association for Business and Industry
Patrick Drinan, Sheboygan County Economic Development Corporation
Frank Frassetto, Wisconsin Department of Commerce
Wendy Gehlhoff, Florence County Development Commission
Jami Harrington, City of Green Bay Economic Development Department
Elizabeth Hartman, Chamco Inc.
Mike Hendrick, Outagamie County Planning Department
Brenda Hicks-Sorensen, Fond du Lac County Economic Development Corporation
Cathy Huybers, Fox Valley Workforce Development Board, Inc.
Carol Karls, Wisconsin Public Service Corp.
Rob Kleman, Oshkosh Area Economic Development Corporation
Connie Loden, Manitowoc County Economic Development Corporation
Bruce Mommaerts, Oconto County Economic Development Corporation
Fred Monique, Advance
Jerry Murphy, New North Inc.
Kelly Nieforth, Calumet County
Sam Perlman, Door County Economic Development Corporation
Jim Schlies, Fox Cities Chamber of Commerce
Steve Sengstock, Shawano County Economic Progress, Inc.
David Thiel, Waupaca County Economic Development Corporation
Peter Thillman, Lakeshore Technical College
Bill Wheeler, Tri-County Regional Economic Development Corporation

**Utilizes the Northeast Wisconsin Regional Economic Partnership group as a joint strategy committee with Bay Lake Regional Planning Commission*

APPENDIX B - NEW PUBLICATIONS

Administrative Documents

2010 AFFIRMATIVE ACTION PROGRAM, January 2009. Analyzes staff, personnel policies, and practices of East Central and outlines goals for achieving equal employment opportunity in the agency.

2010 ANNUAL WORK PROGRAM AND BUDGET, January, 2009. Contains information on the Commission's projected annual budget and the work activities associated with funding that is received.

RAPPORT (Quarterly Newsletter) Quarterly updates of regional planning activities.

Sewer Service Area Plans

SHAWANO LAKE 2030 SEWER SERVICE AREA PLAN, March 2011. Population and land use information was used to delineate 20-year future growth areas. Preservation of environmentally sensitive areas and cost effective and efficient development patterns are also promoted.

Transportation Plans

TRANSPORTATION IMPROVEMENT PROGRAM FOR THE FOX CITIES AND OSHKOSH URBANIZED AREAS, October 2010. A five-year list of all proposed federal and state aid transportation projects.

TRANSPORTATION IMPROVEMENT PROGRAM FOR THE FOND DU LAC URBANIZED AREA, November, 2010. A five-year list of all proposed federal and state aid transportation projects.

2010 OUTAGAMIE COUNTY 85.21 COUNTY ELDERLY AND DISABLED TRANSPORTATION ASSISTANCE PROGRAM GRANT, December 2010. An annual state grant application required for the attainment of specialized transportation funding for all 72 counties in the State of Wisconsin. The Commission is contracted with Outagamie County to draft this document.

BIKE TO SCHOOL DAY GUIDEBOOK, May, 2010. An instructional guide for Bike to School Day activities.

FOX CITIES URBANIZED AREA METROPOLITAN PLANNING ORGANIZATION LONG RANGE TRANSPORTATION/LAND USE PLAN update, October, 2010.*

OSHKOSH URBANIZED AREA METROPOLITAN PLANNING ORGANIZATION LONG RANGE TRANSPORTATION/LAND USE PLAN update, October, 2010.*

FOND DU LAC URBANIZED AREA METROPOLITAN PLANNING ORGANIZATION LONG RANGE TRANSPORTATION/LAND USE PLAN update, October, 2010.*

** The purpose of the 2010 update to the Long Range Transportation/Land Use Plans (LRTP) is to expand on issues not covered adequately by the existing LRTP. The LRTP is an evolving document with minor updates every 5 years and major updates every 10 years in concert with the US Census. The update consists of the following seven sections:*

- *Transportation systems*
- *Forecast Analysis*
- *Recommendations*
- *Environmental Justice*
- *Environmental Mitigation*
- *State Long Range Plan Coordination*
- *Financial Analysis*

Comprehensive Plans

VILLAGE OF KIMBERLY 2030 COMPREHENSIVE PLAN, January, 2010.*

VILLAGE OF COMBINED LOCKS 2030 COMPREHENSIVE PLAN, February, 2010.*

** Describes existing conditions, projects future growth and offers recommendations to guide future development.*

Open Space Plans

CITY OF NEW HOLSTEIN OPEN SPACE AND RECREATION PLAN, September, 2010.*

CITY OF NEW LONDON OPEN SPACE AND RECREATION PLAN 2010-2014, April, 2010.*

CITY OF NEW LONDON OPEN SPACE AND RECREATION PLAN 2010-2014, April, 2010.*

CITY OF SEYMOUR OPEN SPACE AND RECREATION PLAN 2011-2015, November, 2010.*

TOWN OF NEENAH OPEN SPACE AND RECREATION PLAN, May, 2010.*

TOWN OF MENASHA FIVE-YEAR PARKS & OPEN SPACE PLAN 2011-2015, February, 2011.*

** Describes existing conditions, projects future growth, and offers recommendations to guide the future growth and development of recreational facilities.*

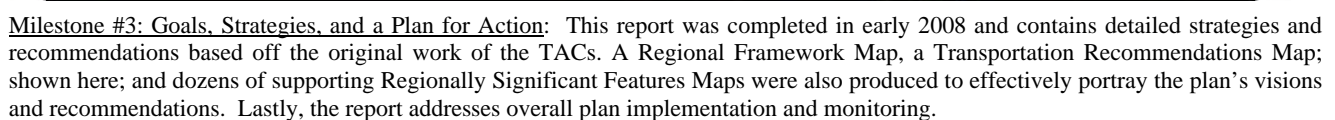
Regional Plans

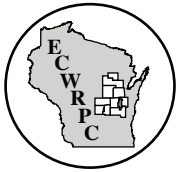
COMPREHENSIVE ECONOMIC DEVELOPMENT STRATEGY ANNUAL REPORT & SUPPLEMENT, October 2010. This report updates an economic development program for East Central Wisconsin. Specific public and private investment projects intended to promote economic development with the region area described.

POST DISASTER ECONOMIC RECOVERY STRATEGY FOR EAST CENTRAL WISCONSIN, A RESPONSE TO THE 2008 FLOODS, May, 2010. The primary purpose of this report is to provide specific recommendations for improving future economic resiliency to flood and other natural disasters within East Central Wisconsin.

Check our website for Adobe Acrobat (.pdf) versions of these documents! www.eastcentralrpc.org

Exhibit T-1: Priority Transportaton Projects / Plans / Studies





EAST CENTRAL WISCONSIN
REGIONAL PLANNING COMMISSION
400 AHNAIP STREET, SUITE 100
MENASHA, WISCONSIN 54952
PHONE (920) 751-4770
FAX (920) 751-4771
WEB www.eastcentralrpc.org

PRESRT STD
U.S. POSTAGE PAID
Menasha, WI 54952
Permit No. 94

Commission Officers

Ken Capelle, Shawano County
Chair

Bob Hermes, Menominee County
Vice-Chair

Eric W. Fowle, AICP
Executive Director

Walt Raith
Vicky Johnson
Editors

Trish Nau
Cover Design
and Layout

CURRENT OCCUPANT OR

The East Central Wisconsin Regional Planning Commission's CY 2010 planning program was supported by federal and state assistance. Specific funding for this report was provided by the Federal Highway Administration, Federal Transit Administration, the Wisconsin Department of Transportation, the Economic Development Administration, Wisconsin Department of Administration and the Wisconsin Department of Natural Resources.

